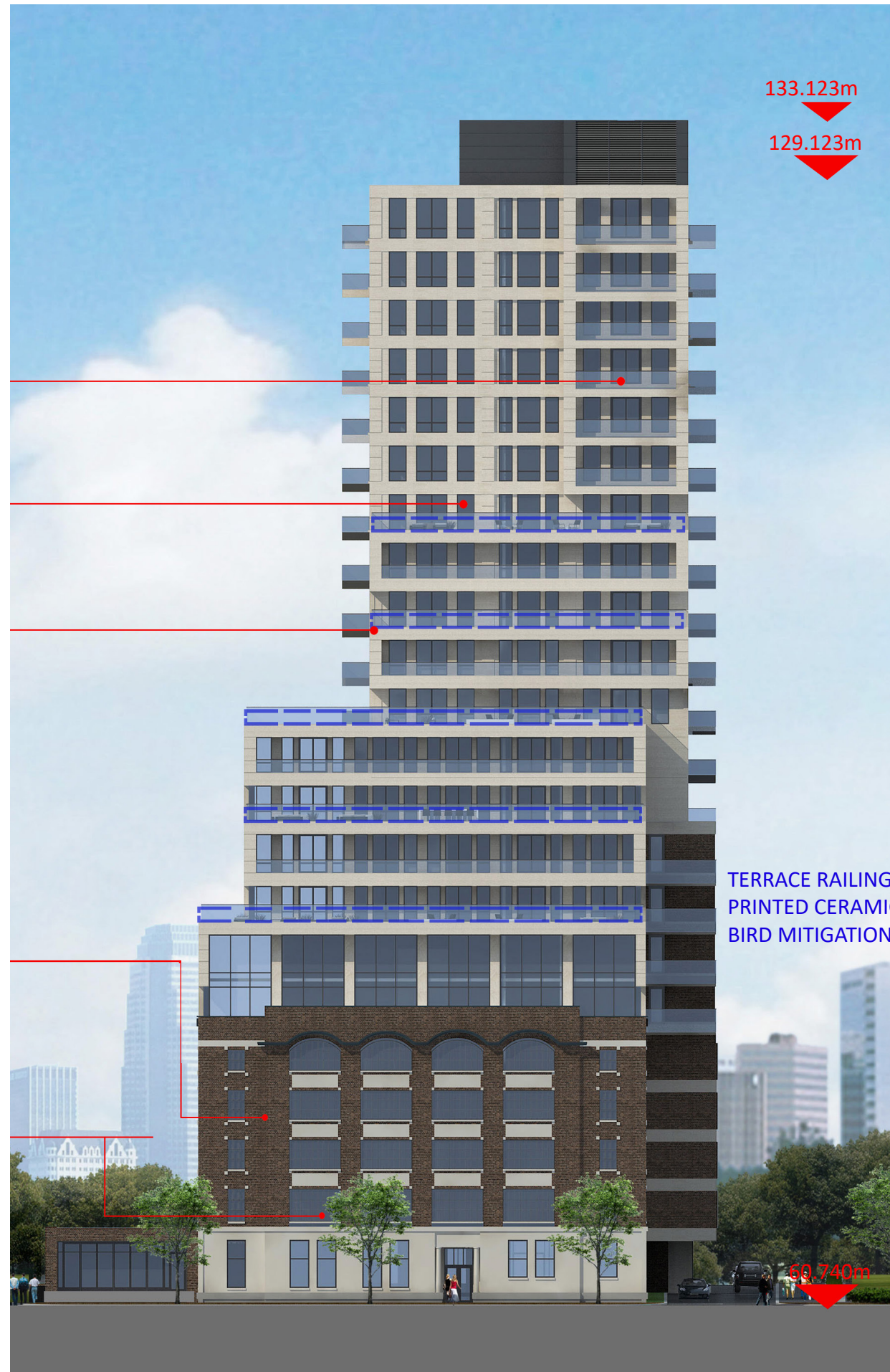
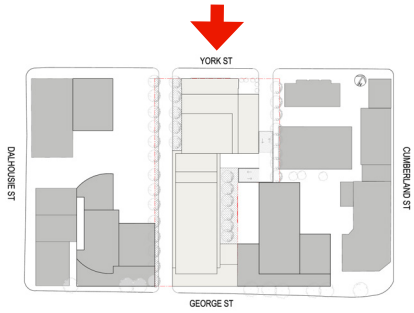


4.11 ELEVATION - YORK



PRECAST CONCRETE LIGHT GREY

THERMOPANE GLAZING WITH GREY ALUMINUM PANELS.
LOUVERS IN MATCHING ALUMINUM FOR APARTMENT WINDOWS.

EXPOSED CONCRETE BALCONY.
GLASS RAILINGS

EXISTING BRICK AND STONE TO BE REMAINED. JOINTS TO BE REPOINTED,
SURFACE TO BE CLEANED AND BROKEN ELEMENTS TO BE REPLACED WITH
SIMILAR FEATURES.

NEW THERMOPANE GLAZING IN FACTORY STYLE MULLIONS
TO MATCH EXISTING.

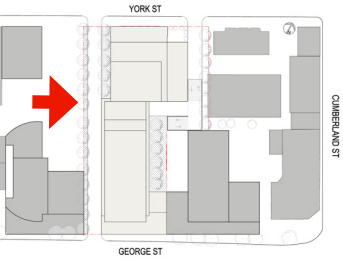
TERRACE RAILING TO HAVE
PRINTED CERAMIC DOTS FOR
BIRD MITIGATION

BUILDING HEIGHT: 68.68m

AVERAGE GRADE: 60.443m

4.12 ELEVATION - GEORGE





PRECAST CONCRETE LIGHT GREY

THERMOPANE GLAZING WITH GREY ALUMINUM PANELS.
LOUVERS IN MATCHING ALUMINUM FOR APARTMENT WINDOWS.

EXPOSED CONCRETE BALCONY.
GLASS RAILINGS

TERRACE RAILING TO HAVE
PRINTED CERAMIC DOTS FOR
BIRD MITIGATION

EXISTING BRICK AND STONE TO BE REMAINED. JOINTS TO
BE REPOINTED, SURFACE TO BE CLEANED AND BROKEN
ELEMENTS TO BE REPLACED WITH SIMILAR FEATURES.

NEW THERMOPANE GLAZING
IN FACTORY STYLE MULLIONS
TO MATCH EXISTING.

133.123m

129.123m

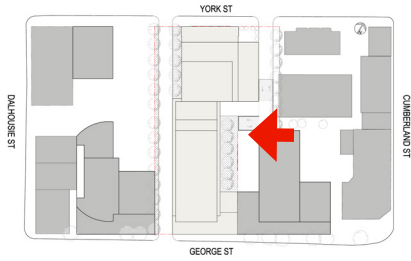
BUILDING HEIGHT: 68.68m

FACE BRICK ON
PRECAST PANELS.

BRICKS TO MATCH
EXISTING

60.746m

AVERAGE GRADE: 60.443m



133.123m

129.123m

PRECAST CONCRETE LIGHT GREY

CURTAINWALL THERMOPANE GLAZING WITH GREY ALUMINUM PANELS.
LOUVERS IN MATCHING ALUMINUM FOR APARTMENT WINDOWS.

EXPOSED CONCRETE BALCONY.
GLASS RAILINGS

TERRACE RAILING TO HAVE
PRINTED CERAMIC DOTS FOR
BIRD MITIGATION

EXISTING BRICK AND STONE TO BE REMAINED. JOINTS TO
BE REPOINTED, SURFACE TO BE CLEANED AND BROKEN
ELEMENTS TO BE REPLACED WITH SIMILAR FEATURES.

FACE BRICK TO MATCH EXISTING ON GFRC
CONCRETE PANELS.

NEW THERMOPANE GLAZING IN
FACTORY STYLE MULLIONS TO
MATCH EXISTING.

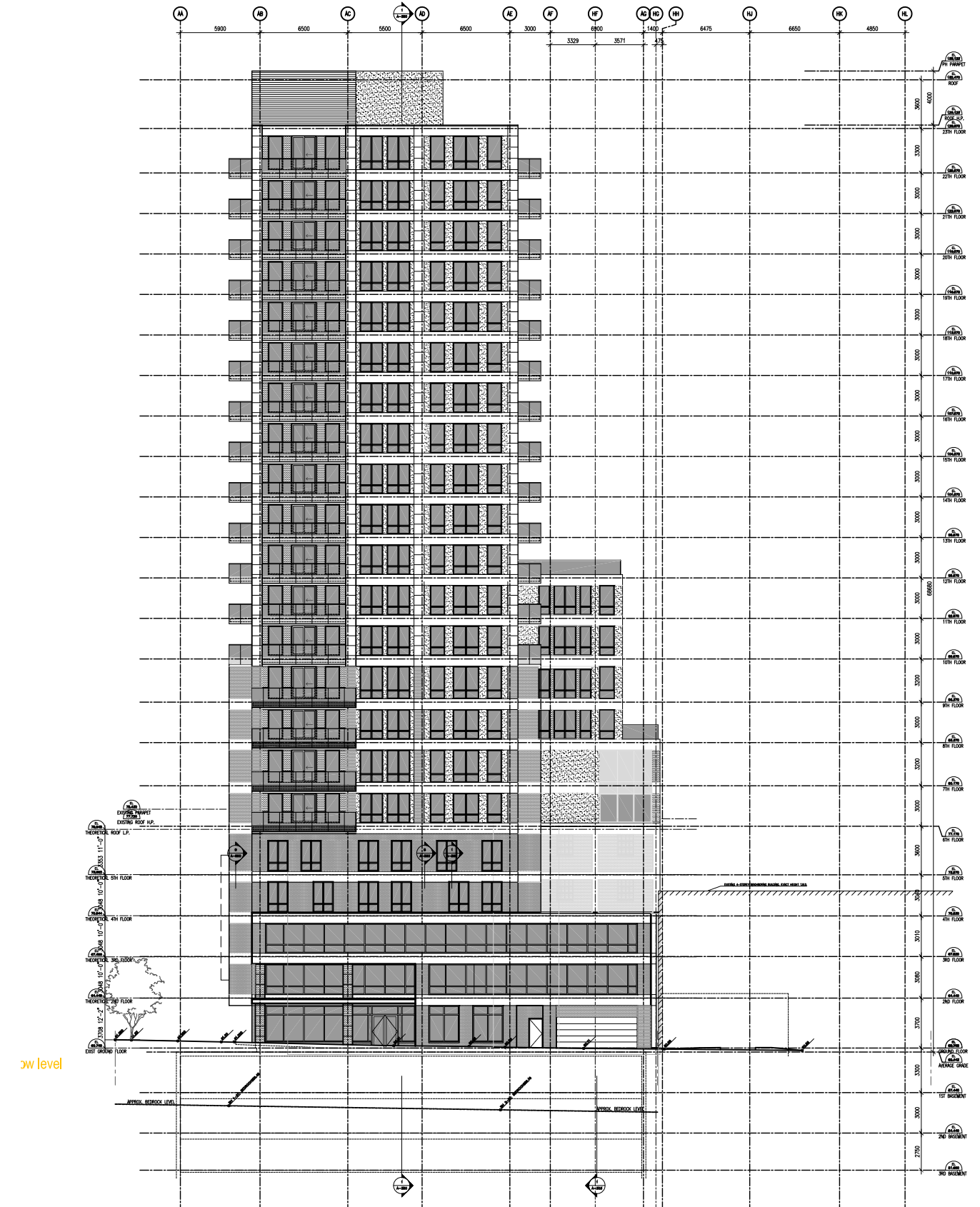
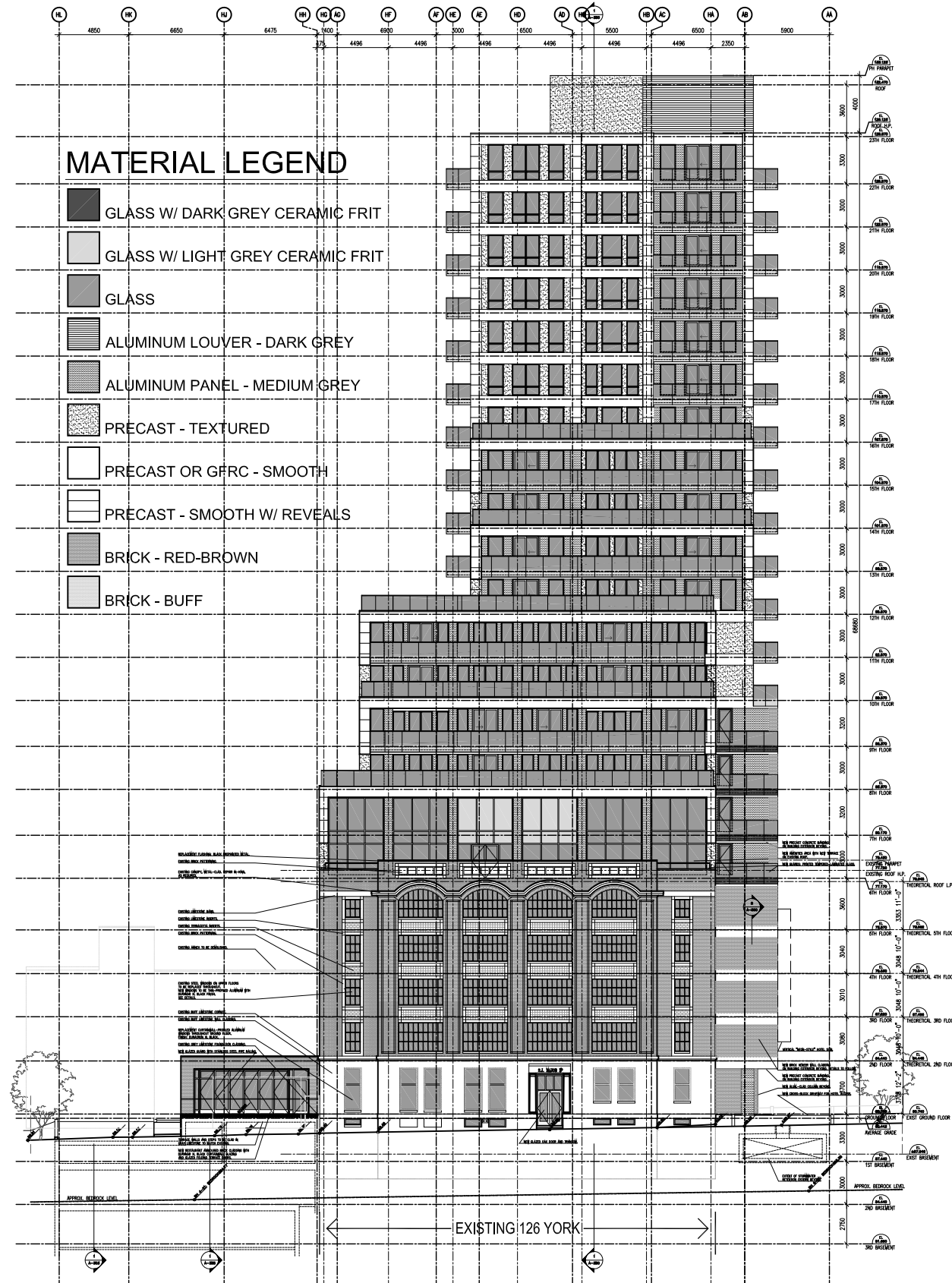
BUILDING HEIGHT: 68.68m

CONCRETE BLOCK
MITOYEN WALL








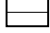


60.740m

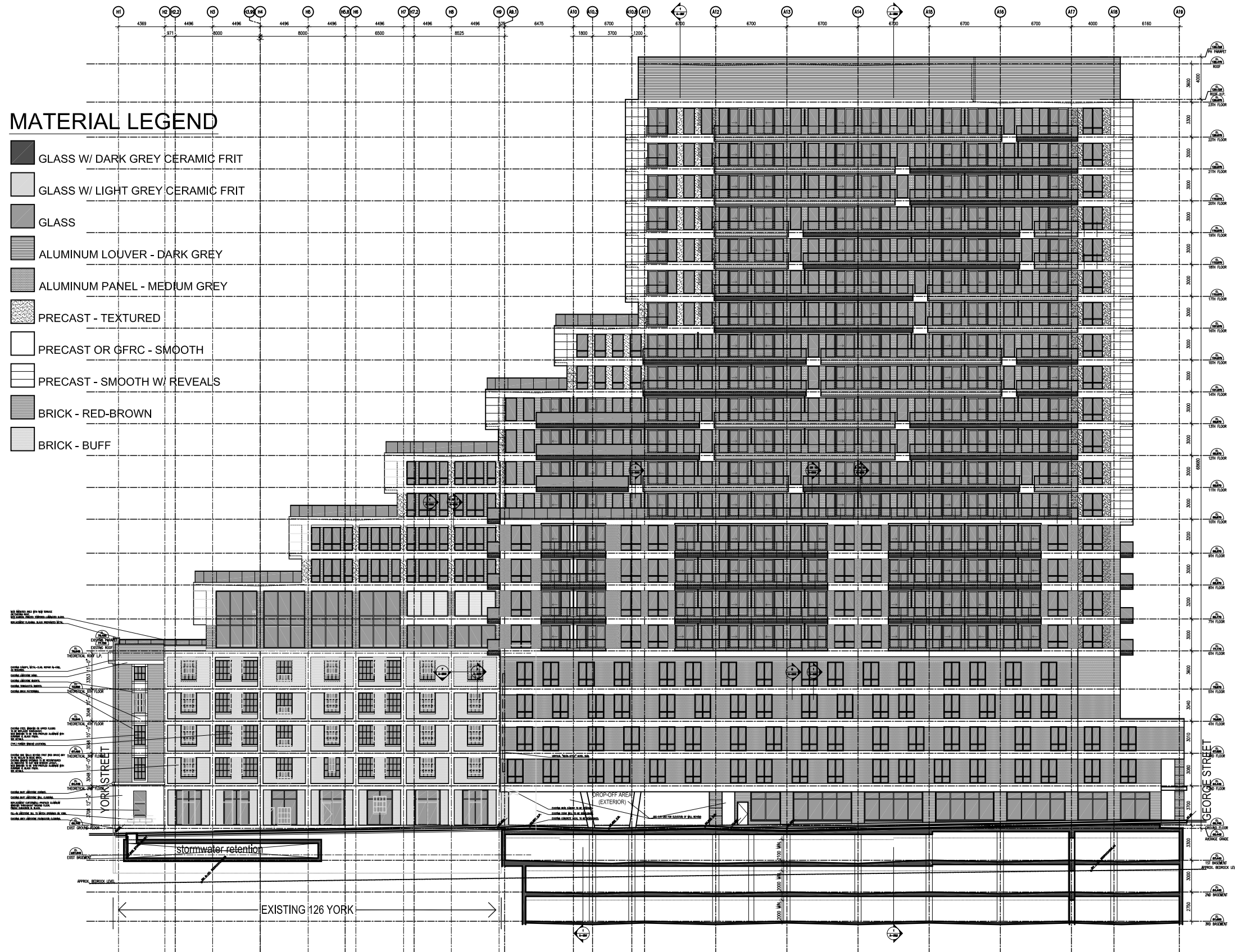
AVERAGE GRADE: 60.443m

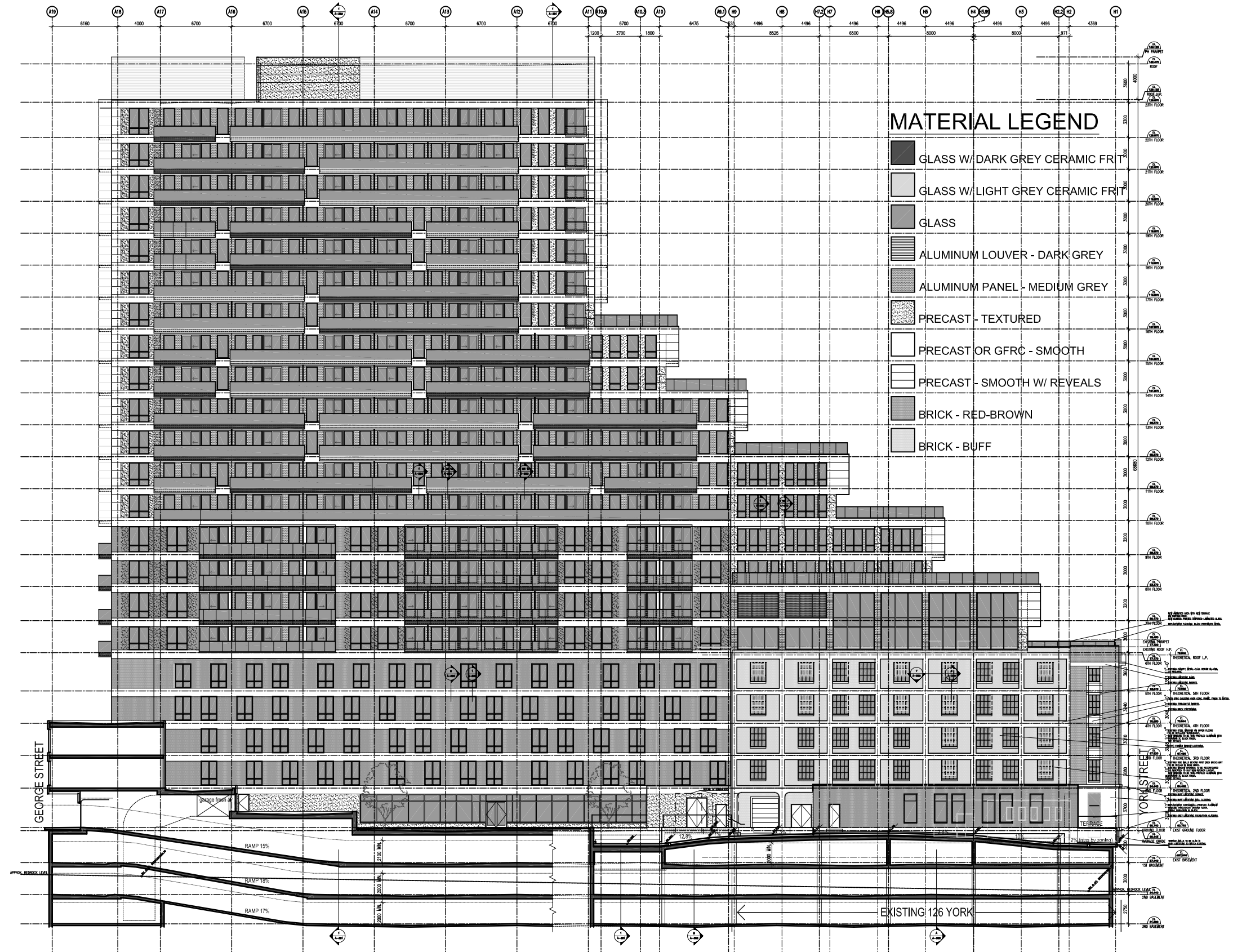
CURTAIN WALL GLASS TO HAVE PRINTED
CERAMIC DOTS FOR BIRD MITIGATION

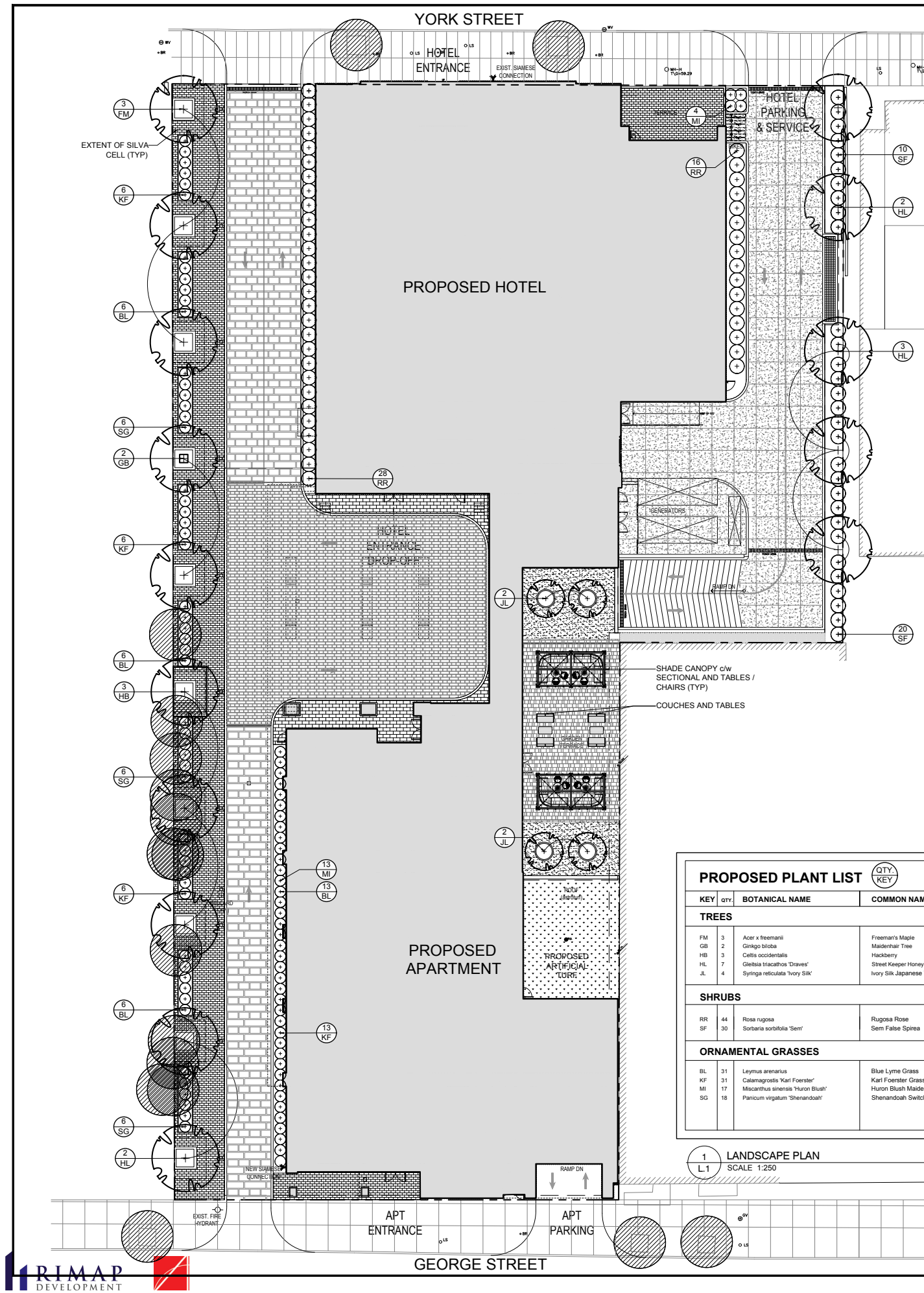


MATERIAL LEGEND

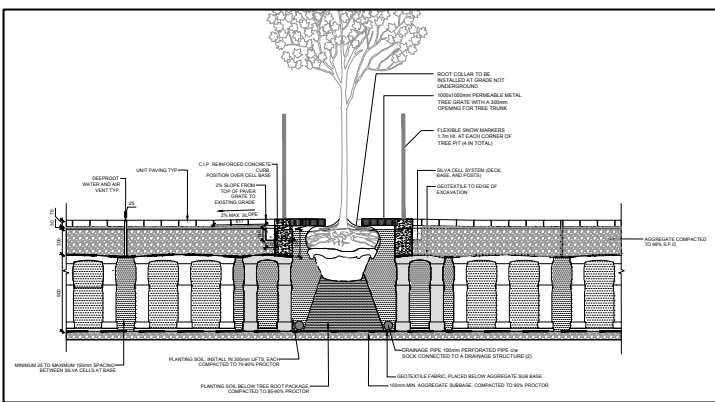
-  GLASS W/ DARK GREY CERAMIC FRIT
-  GLASS W/ LIGHT GREY CERAMIC FRIT
-  GLASS
-  ALUMINUM LOUVER - DARK GREY
-  ALUMINUM PANEL - MEDIUM GREY
-  PRECAST - TEXTURED
-  PRECAST OR GFRC - SMOOTH
-  PRECAST - SMOOTH W/ REVEALS
-  BRICK - RED-BROWN
-  BRICK - BUFF



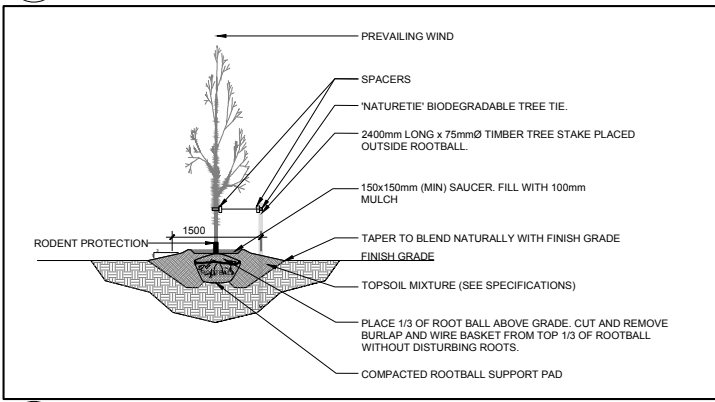




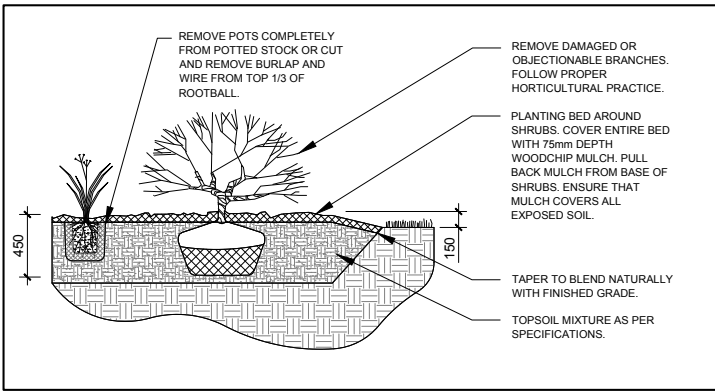
- GENERAL NOTES:**
- It is the responsibility of the appropriate contractor or official to report any errors, omissions or discrepancies on this plan with actual site conditions to the Landscape Architect before proceeding with construction.
 - The contractor is to notify all utility companies and authorities prior to any excavation and ascertain locations of underground services.
 - The contractor is to reinstate all areas and items damaged as a result of construction activity.
 - The contractor is to comply with all pertinent codes and by-laws.
 - The contractor is to maintain a positive surface run-off throughout the entire construction period.
 - The Landscape Architect is not responsible for subsurface conditions.
 - The contractor is to identify all existing trees to remain on site with the Landscape Architect prior to construction.
 - The contractor is to stake the proposed location of all plant material in conjunction with the Landscape Architect prior to excavation.
 - Minimum distances for selected deciduous trees are as follows:
 - Building Foundations 7.5m
 - Sidewalks 1.5m
 - Public Streets 2.5m
 - Underground Infrastructure 2.0m
 - All trees within 1m of underground utility trenches are to be excavated by hand.
 - Remove all protective wrapping from tree trunks after installation.
 - Staking of trees shall only be performed if necessary.
 - Ensure that mulch is pulled back a min. distance of 75mm from base of tree trunk.



2 TREE PLANTING WITH SOIL CELLS SET IN UNIT PAVING W/METAL GRATE
SCALE: NTS



3 DECIDUOUS TREE PLANTING
SCALE: NTS



4 SHRUB / ORNAMENTAL GRASS PLANTING
SCALE: NTS

PROPOSED PLANT LIST

| KEY | QTY | BOTANICAL NAME | COMMON NAME | SIZE | CONDITION | REMARKS |
|---------------------------|-----|-----------------------------------|--------------------------------|-----------|-----------|-------------------|
| TREES | | | | | | |
| FM | 3 | Acer x freemanii | Freeman's Maple | 60mm cal. | B&B | Male tree |
| GB | 2 | Ginkgo biloba | Maidenhair Tree | 60mm cal. | B&B | |
| HB | 3 | Celtis occidentalis | Hackberry | 60mm cal. | B&B | |
| HL | 7 | Gleditsia triacanthos 'Draves' | Street Keeper Honey Locust | 60mm cal. | B&B | |
| JL | 4 | Syringa reticulata 'Ivory Silk' | Ivory Silk Japanese Tree Lilac | 60mm cal. | B&B | Single Leader |
| SHRUBS | | | | | | |
| RR | 44 | Rosa rugosa | Rugosa Rose | 800mm ht. | Potted | Space 1000mm o.c. |
| SF | 30 | Sorbaria sorbifolia 'Sem' | Sem False Spirea | 600mm ht. | Potted | Space 1000mm o.c. |
| ORNAMENTAL GRASSES | | | | | | |
| BL | 31 | Leymus arvensis | Blue Lyme Grass | 250mm pot | Potted | Space 800mm o.c. |
| KF | 31 | Calamagrostis 'Karl Foerster' | Karl Foerster Grass | 250mm pot | Potted | Space 800mm o.c. |
| MI | 17 | Miscanthus sinensis 'Huron Blush' | Huron Blush Maiden Hair Grass | 250mm pot | Potted | Space 800mm o.c. |
| SG | 18 | Panicum virgatum 'Shenandoah' | Shenandoah Switch Grass | 250mm pot | Potted | Space 800mm o.c. |

1 LANDSCAPE PLAN
SCALE: 1:250

CLIENT: **RIMAP DEVELOPMENT**

CONSULTANTS: **BRIAN ELDSEN BURROWS ARCHITECTURE ARCHITEX GROUP**

CIVIL ENGINEERS: **IBI GROUP**

333 Preston Street Tower 1, Suite 400 Ottawa, Ontario Canada K1S 5N4 Tel: (613) 225-1311 FAX: (613) 225-9868

LEGEND

- EXISTING TREE TO REMAIN (REFER TO TREE CONSERVATION REPORT PREPARED BY IFS ASSOCIATES JAN. 18/2021)
- PROPOSED DECIDUOUS TREE IN RAISED CONCRETE PLANTER
- PROPOSED DECIDUOUS TREE
- PROPOSED SHRUBS / PERENNIALS
- PROPOSED PEASTONE
- PROPOSED RIVERSTONE
- PROPOSED ARTIFICIAL TURF
- PROPOSED TYPE 1 PRECAST CONCRETE PAVERS
- PROPOSED TYPE 2 PRECAST CONCRETE PAVERS
- PROPOSED TYPE 1 STAMPED CONCRETE
- PROPOSED TYPE 2 STAMPED CONCRETE
- PROPOSED CONCRETE DRIVEWAY

| | | | | |
|---|----------------------------------|------------|----|----|
| 6 | REVISED PER NEW SITE PLAN | 10/08/2021 | ML | JL |
| 5 | REVISED PER NEW SITE PLAN | 09/24/2021 | ML | JL |
| 4 | ISSUED FOR COORDINATION | 09/14/2021 | ML | JL |
| 3 | EXISTING TREES REVISED TO REMAIN | 08/24/2021 | ML | JL |
| 2 | REVISED PER NEW SITE PLAN | 08/17/2021 | ML | JL |
| 1 | ISSUED FOR SITE PLAN CONTROL | 04/05/2021 | ML | JL |

No. Issue Date (MM/DD/YY) DR CK

JAMES B. LENNOX & ASSOCIATES INC. LANDSCAPE ARCHITECTS
3333 CARLING AVE. OTTAWA, ONTARIO K1J 5A8
Tel: (613) 722-5168 Fax: (866) 343-3942

PROJECT: **NEW HOTEL AND APARTMENT BUILDINGS**
126 YORK STREET, OTTAWA ON

DRAWING: **LANDSCAPE PLAN**

SCALE: 1:250

START DATE: MARCH 2021

PROJECT NO.: 21MIS2121

DRAWING NO.: **L.1**

PLOT SIZE ARCH-D