

Distances shown on this plan are ground distances and can be converted to grid distances by multiplying by the combined scale factor of 0.999950.

Bearings are grid, derived from Can-Net 2016 Real Time Network GPS observations on reference points A and B, shown hereon, having a bearing of N58°33'30"E and are referenced to Specified Control Points 01919680005 and 01919680105, MTM Zone 9 (76°30' West Longitude) NAD-83 (original).

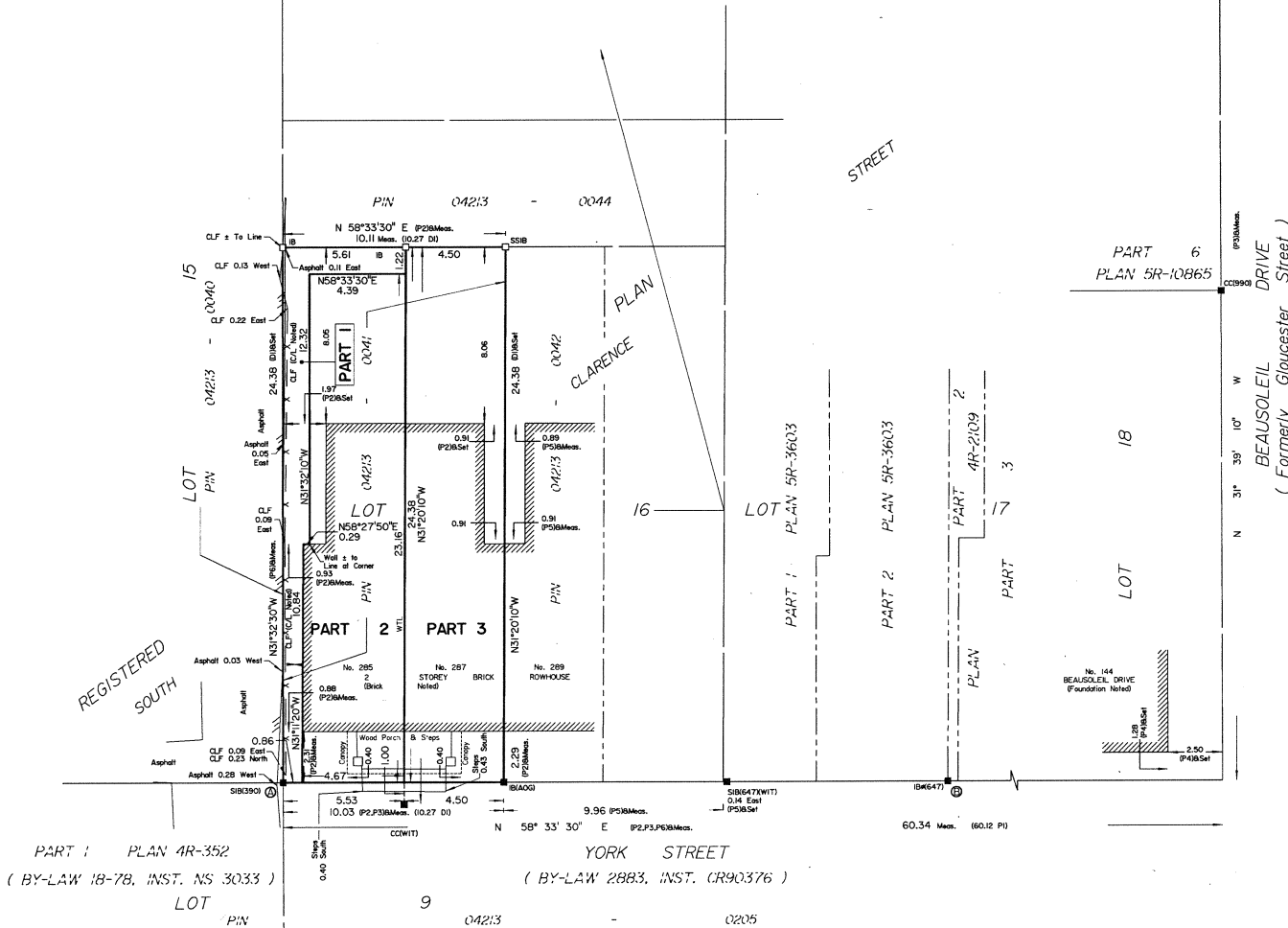
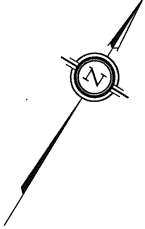
For bearing comparisons, a rotation of 0°01'00" clockwise was applied to bearings on P3.

Coordinates are derived from Can-Net 2016 Real Time Network GPS observations referenced to Specified Control Points 01919680005 and 01919680105, MTM Zone 9 (76°30' West Longitude) NAD-83 (original).

Coordinate values are to urban accuracy in accordance with O. Reg. 216/10.

.01919680005 Northing 5027191.26 Easting 361496.76
.01919680105 Northing 5024915.16 Easting 373971.65
.Point A Northing 5032749.59 Easting 368581.80
.Point B Northing 5032765.45 Easting 368607.57

Caution: Coordinates cannot, in themselves, be used to re-establish corners or boundaries shown on this plan.



Committee of Adjustment
AUG 02 2022
City of Ottawa

SCHEDULE				
Area sq.m	PART	LOT	PLAN	PIN
31.5	1	PART OF 16	43586	ALL OF 04213-0041
104.2	2			
109.7	3			

PLAN OF SURVEY OF
PART OF LOT 16
SOUTH CLARENCE STREET
REGISTERED PLAN 43586
CITY OF OTTAWA
Surveyed by Annis, O'Sullivan, Vollebakk Ltd.



The intended plot size of this plan is 457 mm in width by 610 mm in height when plotted at a scale of 1:150.

Metric
DISTANCES AND COORDINATES SHOWN ON THIS PLAN
ARE IN METRES AND CAN BE CONVERTED TO FEET BY
DIVIDING BY 0.3048.

Surveyor's Certificate
I CERTIFY THAT:
1. This survey and plan are correct and in accordance with the Surveys Act, the Surveyors Act and the Land Titles Act and the regulations made under them.
2. The survey was completed on the 5th day of May, 2022.

Date
T. Hartwick
Ontario Land Surveyor

This plan relates to AOLS Plan Submission form number: V-25523

- Notes & Legend
- Denotes Survey Monument Planted
 - Survey Monument Found
 - Standard Iron Bar
 - Short Standard Iron Bar
 - Iron Bar
 - Cut Cross
 - Witness
 - Annis, O'Sullivan, Vollebakk Ltd.
 - Measured
 - Chain Link Fence
 - Registered Plan 43586
 - (1319) Plan dated May 23, 1990
 - (990) Plan dated November 18, 1997
 - (1319) Plan dated August 27, 1985
 - (AOG) Plan dated October 10, 1986
 - (OTT) Plan dated October 7, 1970 (Inst. 59761)
 - Inst. N653894

ANNIS, O'SULLIVAN, VOLLEBEKK LTD.
14 Concourse Gate, Suite 500
Nepean, Ont. K2E 7S6
Phone: (613) 727-0850 / Fax: (613) 727-1079
Email: info@annis.com
Ontario Land Surveyors Reg. No. 21709-22, Vandersburg P.L.S. 169P43506 R. 03