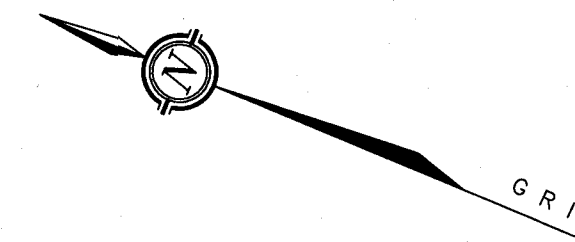
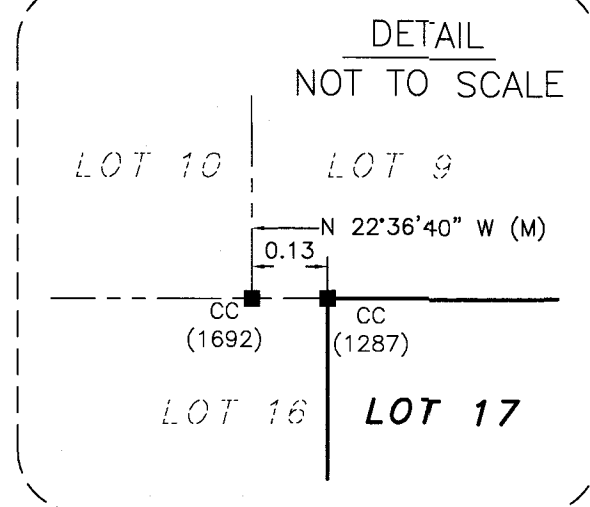


METRIC
DISTANCES AND ELEVATIONS SHOWN ON THIS PLAN ARE IN METRES
AND CAN BE CONVERTED TO FEET BY DIVIDING BY 0.3048



SURVEYOR'S REAL PROPERTY REPORT - PART 1
TOPOGRAPHIC PLAN OF SURVEY OF
PART OF LOT 17
REGISTERED PLAN 219
CITY OF OTTAWA

SCALE 1 : 150
0 1 2 5 10 15 metres

FAIRHALL, MOFFATT & WOODLAND LIMITED
ONTARIO LAND SURVEYORS

ELEVATION NOTES

- ELEVATIONS SHOWN HEREON ARE REFERRED TO GEODETTIC DATUM (CVGD28).
- ELEVATIONS FOR MANHOLE COVERS AND CATCH BASINS HAVE TO BE INDEPENDENTLY CONFIRMED BEFORE THEY CAN BE ACCEPTED FOR FINAL DESIGN OR CONSTRUCTION PURPOSES.
- IT IS THE RESPONSIBILITY OF THE USER OF THIS INFORMATION TO VERIFY THAT THE JOB BENCHMARKS HAVE NOT BEEN ALTERED OR DISTURBED AND THAT THEIR RELATIVE ELEVATION AND DESCRIPTION AGREE WITH THE INFORMATION SHOWN ON THIS DRAWING.

UTILITY NOTES

- THIS DRAWING CANNOT BE ACCEPTED AS ACKNOWLEDGING ALL OF THE UNDERGROUND UTILITIES AND IT WILL BE THE RESPONSIBILITY OF THE USER TO CONTACT THE RESPECTIVE UTILITY AUTHORITIES FOR CONFIRMATION OR LOCATION.
- UNDERGROUND UTILITIES, AS REPORTED ON THIS DRAWING, ARE NOT BASED ON AN ACTUAL 'FIELD LOCATE' BY THE RESPECTIVE UTILITY AGENCIES BUT HAVE BEEN COMPILED FROM DATA OBTAINED FROM THE FOLLOWING SOURCE:
a) CITY OF OTTAWA PUBLIC UTILITIES REGISTRY.
- BEFORE ANY WORK INVOLVING PROBING, EXCAVATING, ETC., A FIELD LOCATION OF UNDERGROUND PLANT BY THE PERTINENT UTILITY AUTHORITY IS MANDATORY.

NOTES

- BEARINGS ARE GRID, DERIVED FROM GPS REAL-TIME NETWORK (RTN) OBSERVATIONS AND ARE REFERRED TO THE CENTRAL MERIDIAN, 76°30'W LONGITUDE MTM ZONE 9, (NAD83 ORIGINAL).
- DISTANCES ARE GROUND AND CAN BE CONVERTED TO GRID BY MULTIPLYING BY THE COMBINED SCALE FACTOR 0.9999385.

LEGEND

- - SURVEY MONUMENT FOUND
- IB - IRON BAR
- SIB - STANDARD IRON BAR
- CP - CONCRETE PIN
- (P) - PLAN SR-10820
- (P1) - PLAN 4R-29365
- (M) - MEASURED
- (S) - SET
- DIA - DIAMETER
- PIN - PROPERTY IDENTIFIER NUMBER
- (1287) - FARLEY, SMITH & MURRAY SURVEYING LTD., O.L.S.
- (1692) - FARLEY, SMITH & DENIS SURVEYING LTD., O.L.S.
- (725) - R. W. ARNETT, O.L.S.
- (WJW) - WEBSTER & SIMMONS SURVEYING LTD., O.L.S. (REF. 7-219)
- CB - CATCHBASIN
- UP - UTILITY POLE
- FH - FIRE HYDRANT
- MH - MANHOLE
- DT - DECIDUOUS TREE
- SS - SANITARY SEWER
- ST - STORM SEWER
- W - WATERMAIN
- G - GAS LINE
- OW - OVERHEAD UTILITY WIRES
- C - CURB
- F - FENCE

SURVEYOR'S REAL PROPERTY REPORT - PART 2
REPORT SUMMARY

DESCRIPTION OF LAND

PART OF LOT 17, (EAST OF CARLETON AVENUE), REGISTERED PLAN 219, CITY OF OTTAWA AS IN ALL OF PIN 04031-0158.

REGISTERED EASEMENTS

TOGETHER WITH A RIGHT-OF-WAY OVER PART 2, SR-10820 PER INST. N443099

REMARKS

NOTE LOCATIONS OF FENCES AND BUILDINGS.

ZONING

COMPLIANCE WITH ZONING, LAND USE, ENVIRONMENTAL AND BUILDING REGULATIONS NOT CERTIFIED BY THIS REPORT.

THIS REPORT WAS PREPARED FOR CATHERINE KINGSTON. THE UNDERSIGNED ACCEPTS NO RESPONSIBILITY FOR USE BY OTHER PARTIES.

SURVEYOR'S CERTIFICATE

- I CERTIFY THAT:
1. THIS SURVEY AND PLAN ARE CORRECT AND IN ACCORDANCE WITH THE SURVEYS ACT, THE SURVEYORS ACT AND THE REGULATIONS MADE UNDER THEM.
2. THE SURVEY WAS COMPLETED ON AUGUST 05, 2021
DATE 2021/08/05
JOHN H. GUTRI
ONTARIO LAND SURVEYOR

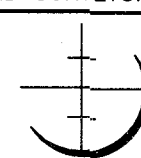
ASSOCIATION OF ONTARIO
LAND SURVEYORS
PLAN SUBMISSION FORM
2173732



THIS PLAN IS NOT VALID
UNLESS IT IS AN EMBOSSED
ORIGINAL COPY
ISSUED BY THE SURVEYOR
In accordance with
Regulation 1028, Section 29 (3).

**Fairhall
Moffatt &
Woodland**

LIMITED
ONTARIO LAND SURVEYORS
Surveying and Land Information Services
100-600 TERRY FOX DRIVE, KANATA, ONTARIO K2L 4B6
TEL: (613) 591-2860 FAX: (613) 591-1495
www.fmw.on.ca



JOB No.
A B 1 9 6 0 0

E 364008, N 5029529

REFERENCE No.
65-219NP

S:\005\AB19600\DWG 12AUGUST2021

SR_AB196_TP.DWG (ss)

© COPYRIGHT 2021. REPRODUCTION, ALTERATION OR DISTRIBUTION
OF THIS PLAN WITHOUT THE WRITTEN CONSENT OF
FAIRHALL, MOFFATT & WOODLAND LIMITED IS PROHIBITED.

REVISION: AUGUST 20, ADDED STORM SEWER DATA.

Committee of Adjustment
Received | Reçu le

2022-09-20

City of Ottawa | Ville d'Ottawa
Comité de dérogation