

**Committee of Adjustment**  
Received | Reçu le  
**2022-10-04**  
City of Ottawa | Ville d'Ottawa  
**Comité de dérogation**

PLAN 4R-34779

Received and deposited

July 21<sup>st</sup>, 2022

Mary Beth Ouellette

Representative for the  
Land Registrar for the  
Land Titles Division of  
Ottawa-carleton (No.4)

SCHEDULE			
PART	LOT	CONCESSION	PIN
1			
2	PART OF 26		
3			
4			
5			
6	PART OF 27		ALL OF 04264-0160
7			
8			
9			
10	PART OF 26 & 27	2 (OTTAWA FRONT)	
11			
12	PART OF 26		PART OF 04264-0006
13			
14			
15			ALL OF 04264-0152
16	PART OF 27		
17			
18			PART OF 04264-0162
19			
20			

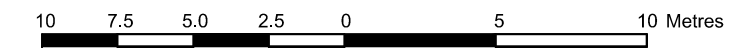
Parts 2 & 3 : Subject to Easement per Expropriation Plan NS1141  
Parts 11, 12 & 13 : Subject to Easement Inst. N440754, LT730132  
Part 13 : Subject to Easement Inst. NS3927.  
Parts 5 & 7 : Subject to Easement Inst. CT224863.  
Part 19 : Subject to Easement Inst. GL85383.

PLAN OF SURVEY OF

PART OF LOTS 26 and 27  
CONCESSION 2 (OTTAWA FRONT)  
Geographic Township of Gloucester  
CITY OF OTTAWA

Surveyed by Annis, O'Sullivan, Vollebekk Ltd.

Scale 1 : 250



The intended plot size of this plan is 1067 mm in width by 914 mm in height when plotted at a scale of 1:250.

Metric

DISTANCES AND COORDINATES SHOWN ON THIS PLAN ARE IN METRES AND CAN BE CONVERTED TO FEET BY DIVIDING BY 0.3048.
--

### Surveyor's Certificate

I CERTIFY THAT:

1. This survey and plan are correct and in accordance with the Surveyors Act, the Surveyors Act and the Land Titles Act and the regulations made under them.
2. The survey was completed on the 10th day of March, 2022.

June 6, 2022

Date \_\_\_\_\_ Ontario Land Surveyor \_\_\_\_\_

This plan relates to AOLS Plan Submission form number: V-2763

Notes &amp; Legend

- Denotes Survey Monument Planted
- ▲- Survey Monument Found
- SIB Standard Iron Bar
- SB Short Standard Iron Bar
- IB Iron Bar
- IBO Round Iron Bar
- Survey Monument 0.3 metres Long
- Meas. Measured
- (WT) Witness
- (AG) Agincourt, Vollebekk Ltd.
- (P1) Plan 4R-27684
- (P2) (AOG) Plan Ref. 4535-04, Dated March 30, 2004
- (P3) Plan SR-2005
- (P4) Registered Plan 445
- (P5) Plan SR-14414
- (P6) Plan 4R-11857
- (P7) Plan 4R-1415
- (P8) Plan 4R-7707
- (P9) Plan 4R-10038
- (P10) Registered Plan GL75995
- CLF Chain Link Fence
- CB Catch Basin

Bearings are grid, derived from Can-Net 2016 Real Time Network GPS observations on reference points A and B, shown hereon, having a bearing of N22°17'20"W and are referenced to Specified Control Points 01919680105 and 019198434761, MTM Zone 9 ( 76°30' West Longitude NAD-83 (original).

For comparison purposes, bearings shown on Plan P4 are astronomic

Coordinates are derived from Can-Net 2016 Real Time Network GPS observations referenced to Specified Control Points 01919580105 and 01918434761, MTM Zone 9 (76°30' West Longitude) NAD-83 (original).

Coordinate values are to urban accuracy in accordance with O. Reg. 216/10.

01919680105	Northing	5024915.16	Easting	373971.65
-------------	----------	------------	---------	-----------

019198434761	Northing	5036178.12	Easting	372436.11
Point A	Northing	5031990.18	Easting	372820.90

Point A	Northing	503215.64	Easting	372769.44
Point B	Northing	503215.64	Easting	372769.44

Caution: Coordinates cannot, in themselves, be used to re-establish corners or boundaries shown on this plan.

or trademarks shown on this page.

ANNIS, O'SULLIVAN, VOLLEBEKK L.

14 Concourse Gate, Suite 500  
Nepean, Ont. K2E 7S6

**Ontario**

Land Surveyors Job No. 21481-21 PILE 26 C 2 OF GL R F



Committee of Adjustment  
Received | Reçu le  
2022-10-04  
City of Ottawa | Ville d'Ottawa  
Comité de dérogation

PLAN 4R-34779  
Received and deposited  
July 21<sup>st</sup>, 2022  
Mary Beth Ouellette  
Representative for the  
Land Registrar for the  
Land Titles Division of  
Ottawa-carleton (No.4)

SCHEDULE			
PART	LOT	CONCESSION	PIN
1	PART OF 26	2	ALL OF 04264-0160
2			
3			
4			
5	PART OF 27	(OTTAWA FRONT)	PART OF 04264-0006
6			
7			
8			
9	PART OF 26 & 27	(OTTAWA FRONT)	ALL OF 04264-0152
10			
11			
12			
13	PART OF 26		PART OF 04264-0152
14			
15			
16			
17	PART OF 27		PART OF 04264-0162
18			
19			

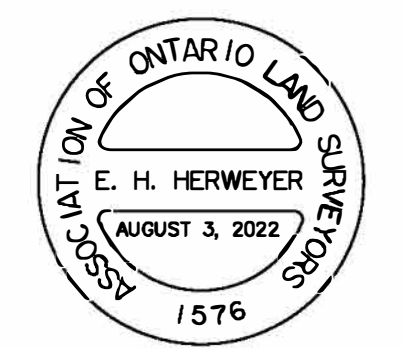
Parts 2 & 3: Subject to Easement per Expropriation Plan NS11419  
Parts 11, 12 & 13: Subject to Easement Inst. N440754, LT730132  
Part 13: Subject to Easement Inst. NS3927  
Parts 5 & 7: Subject to Easement Inst. CT224863  
Part 19: Subject to Easement Inst. GL85383

PLAN OF SURVEY OF  
PART OF LOTS 26 AND 27  
CONCESSION 2 (OTTAWA FRONT)  
Geographic Township of Gloucester  
CITY OF OTTAWA  
Surveyed by Annis, O'Sullivan, Vollebakk Ltd.  
Scale 1:250  
The intended plot size of this plan is 1067 mm in width by 914 mm in height when plotted at a scale of 1:250.

Metric  
DISTANCES AND COORDINATES SHOWN ON THIS PLAN  
ARE IN METRES AND CAN BE CONVERTED TO FEET BY  
DIVIDING BY 0.3048.

Surveyor's Certificate  
I CERTIFY THAT:  
1. This survey and plan are correct and in accordance with the Surveys Act, the Surveyors Act and the Land Titles Act and the regulations made under them.  
2. The survey was completed on the 10th day of March, 2022.

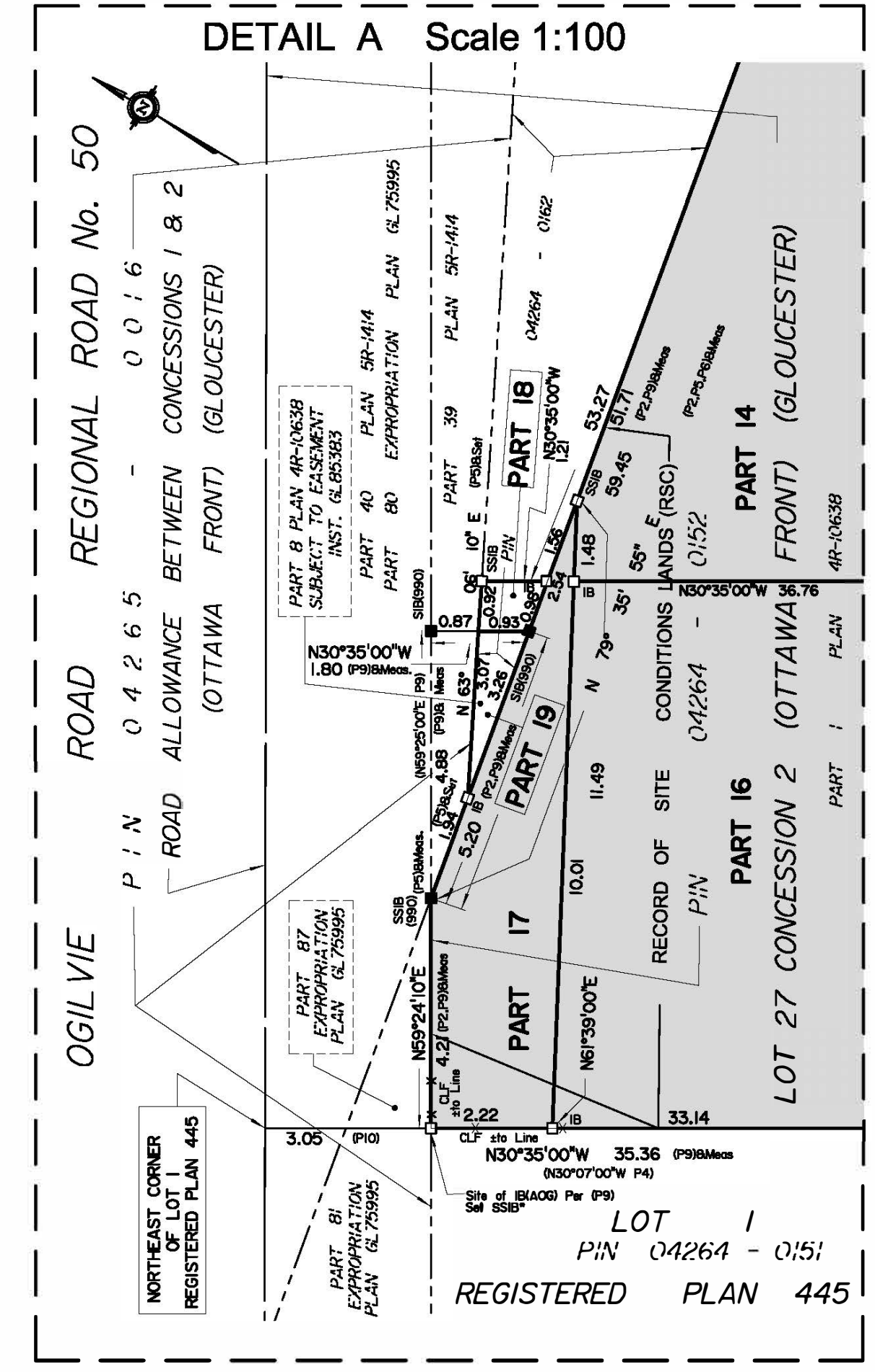
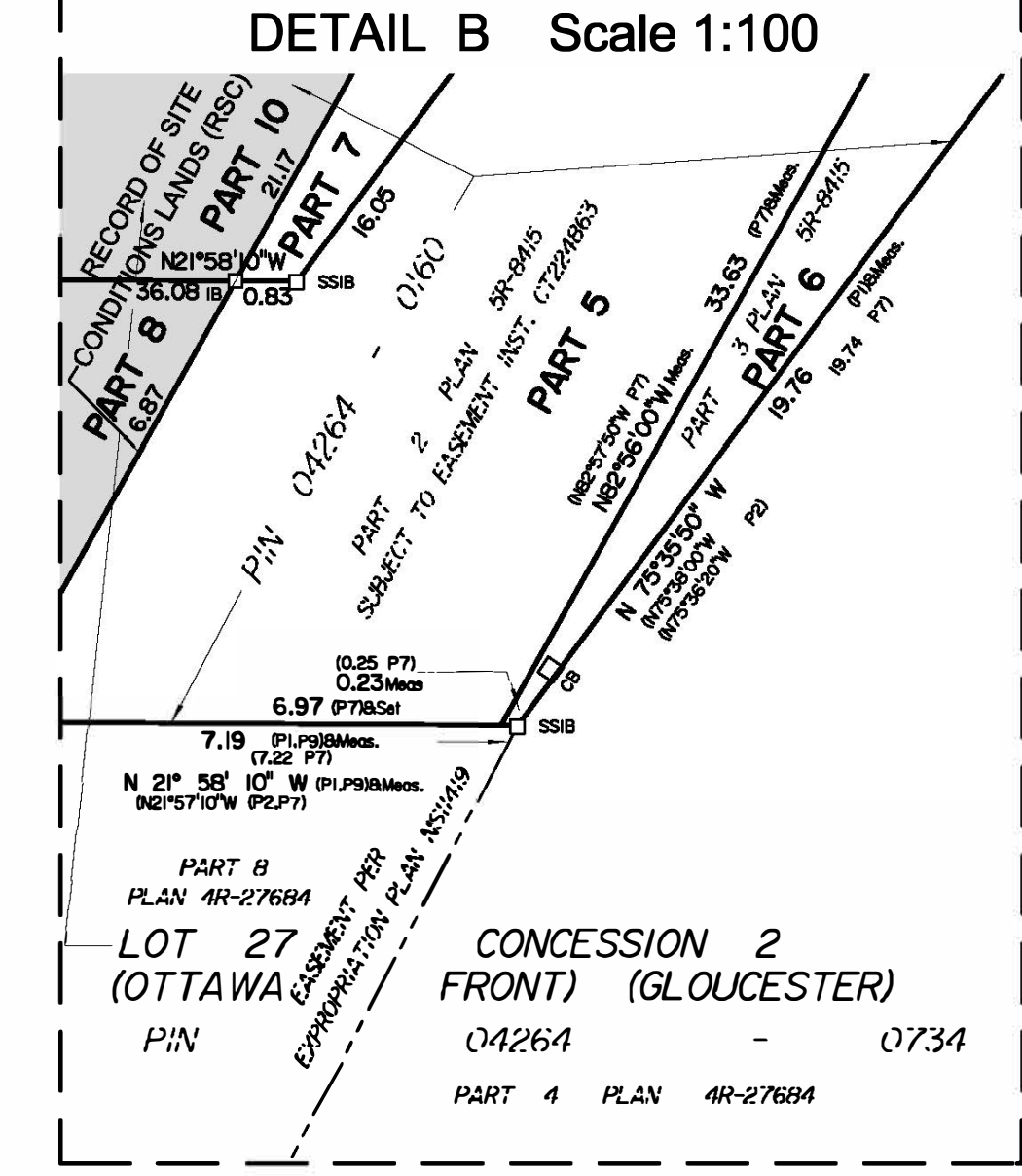
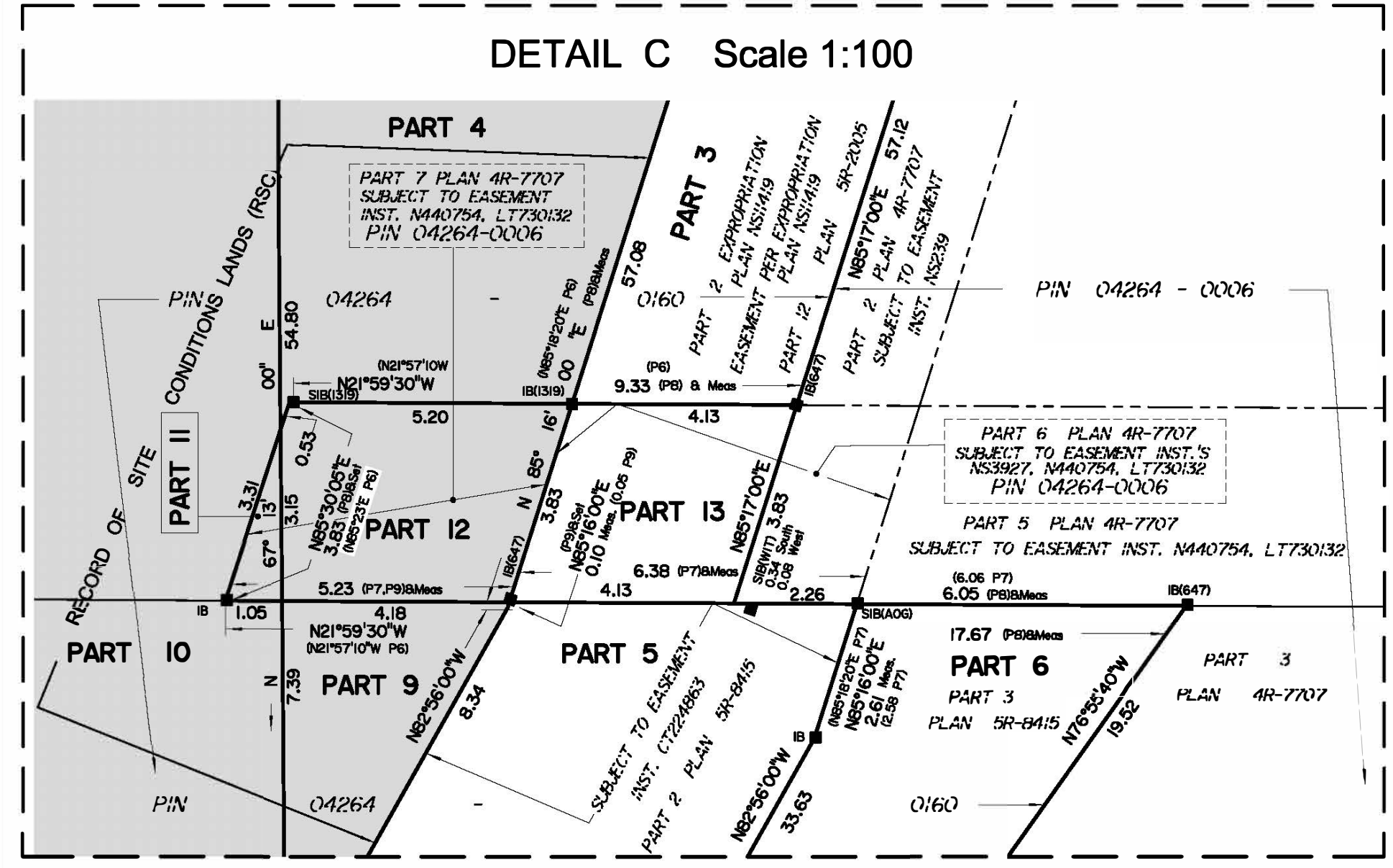
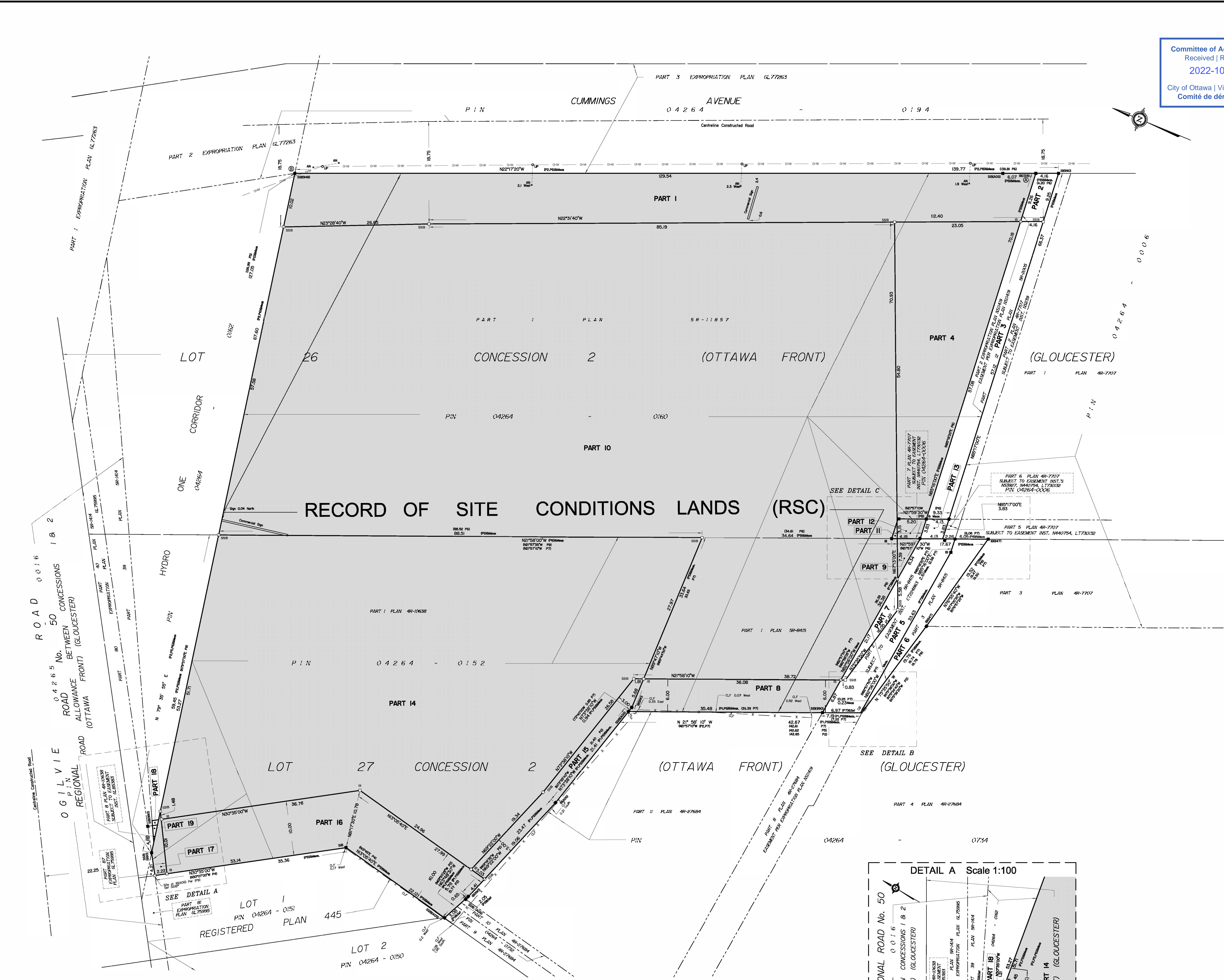
June 6, 2022  
Date  
Ontario Land Surveyor  
This plan relates to AOLS Plan Submission form number: V-27637



Notes & Legend  
- D - Denotes Survey Monument Planted  
- S - Survey Monument Found  
- SIB - Standard Iron Bar  
- SSB - Short Standard Iron Bar  
- IB - Iron Bar  
- BSB - Round Iron Bar  
- SSB - Survey Monument 0.3 metres Long  
- Measured  
- Witness  
- (WIT)  
- (ADC) - Annis, O'Sullivan, Vollebakk Ltd.  
- (P1) - Plan 4R-27694  
- (P2) - (ADC) Plan, Ref. 4535-04, Dated March 30, 2004  
- (P3) - Plan 4R-2095  
- (P4) - Registered Plan 445  
- (P5) - Plan 4R-1414  
- (P6) - Plan 4R-11857  
- (P7) - Plan 4R-8415  
- (P8) - Plan 4R-7707  
- (P9) - Plan 4R-10638  
- (P10) - Expropriation Plan GL75995  
- CLF - Chain Link Fence  
- CB - Catch Basin  
- CLF - Centreline of Multiple Overhead Wires  
- UP - Utility Pole  
- AN - Anchor  
- Record of Site Conditions Lands (RSC)

Distances shown on this plan are ground distances and can be converted to grid distances by multiplying by the combined scale factor of 0.99995.  
Bearings are grid, derived from Can-Net 2016 Real Time Network GPS observations on reference points A and B, shown herein, having a bearing of N22°17'20"W and are referenced to Specified Corner Points 0191980105 and 019198434761, MTM Zone 9 (78°30' West Longitude) NAD-83 (original).  
For bearing comparisons, a rotation of 0°01'55" clockwise was applied to bearings on Plan P9.  
For comparison purposes, bearings shown on Plan P4 are astronomic bearings.  
Coordinates are derived from Can-Net 2016 Real Time Network GPS observations referenced to Specified Control Points 0191980105 and 019198434761, MTM Zone 9 (78°30' West Longitude) NAD-83 (original).  
Coordinate values are to urban accuracy in accordance with O. Reg. 216/10.  
- 0191980105 Northing 5024915.16 Easting 373271.65  
- 019198434761 Northing 5025178.12 Easting 372436.11  
- Point A Northing 5031990.14 Easting 372820.80  
- Point B Northing 5032115.64 Easting 372768.44  
Caution: Coordinates cannot, in themselves, be used to re-establish corners or boundaries shown on this plan.

ANNIS, O'SULLIVAN, VOLLEBEKK LTD.  
14 Concourse Gate, Suite 200  
Mississauga, Ont. M5S 2S6  
Phone: (905) 277-2550 / Fax: (905) 277-1079  
Email: info@anniso.com  
Ontario Land Surveyors (Reg. No. 2498-21-04, 25, 26, 27, 28, 29, 30, 31, 32, 33, 34, 35, 36, 37, 38, 39, 40, 41, 42, 43, 44, 45, 46, 47, 48, 49, 50, 51, 52, 53, 54, 55, 56, 57, 58, 59, 60, 61, 62, 63, 64, 65, 66, 67, 68, 69, 70, 71, 72, 73, 74, 75, 76, 77, 78, 79, 80, 81, 82, 83, 84, 85, 86, 87, 88, 89, 90, 91, 92, 93, 94, 95, 96, 97, 98, 99, 100)





PLAN OF SURVEY OF  
Part of Lots 26 & 27, Concession 2 (Ottawa Front)  
Geographical Township of Gloucester  
City of Gloucester  
Regional Municipality of Ottawa - Carleton

Surveyed by J.G. Payette, OLS  
1990

Scale 1 : 300



OC - 5815  
App. no. 0088-4-705

Committee of Adjustment  
Received | Reçu le  
2022-11-09  
City of Ottawa | Ville d'Ottawa  
Comité de dérogation

I REQUIRE THIS PLAN TO BE  
DEPOSITED UNDER THE LAND TITLES  
ACT

NOVEMBER 1 1990  
J.G. PAYETTE  
Ontario Land Surveyor

APPROVED JUNE 25 1991  
Assistant Examiner of Surveys

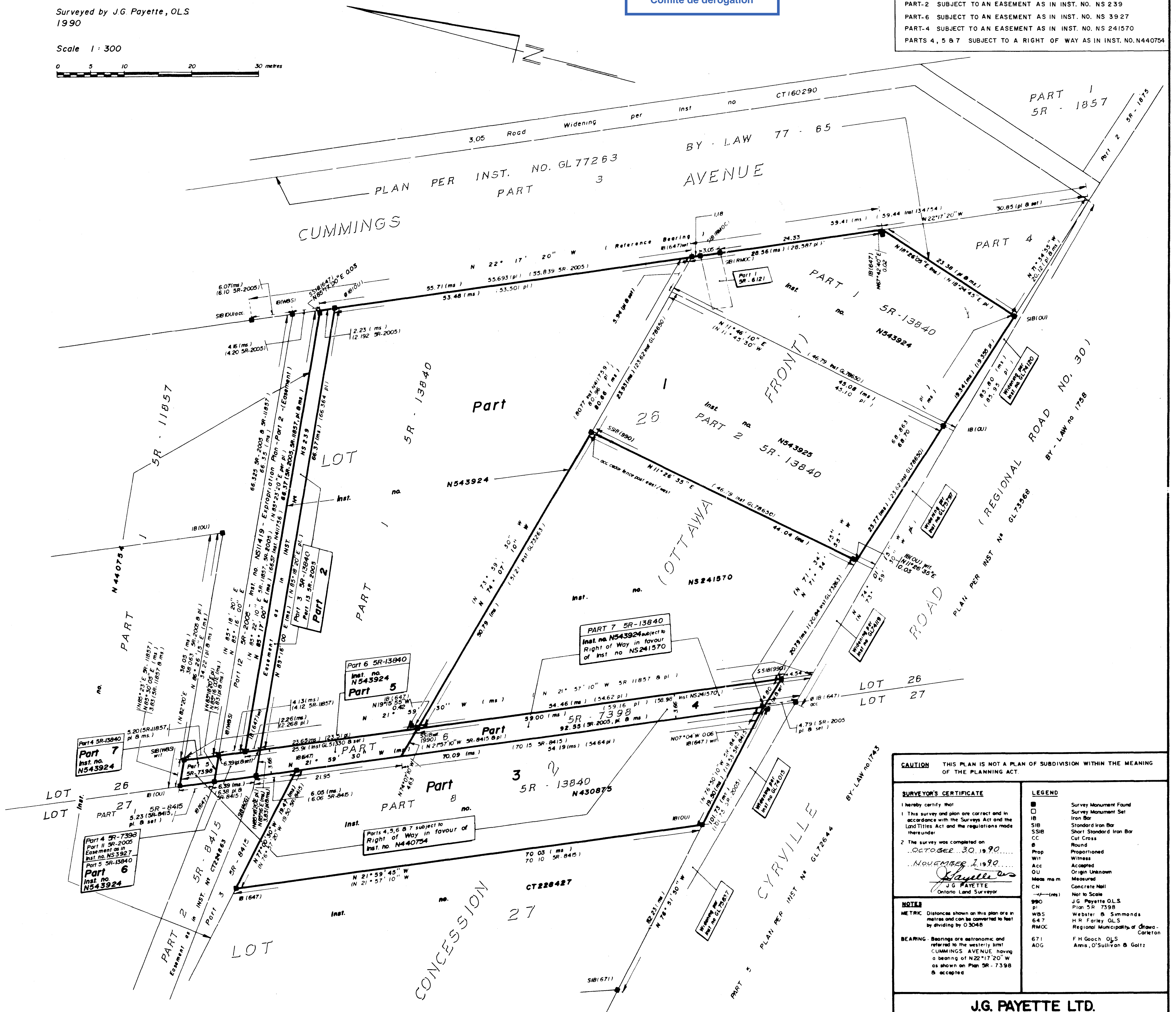
PLAN 4 R-7707

RECEIVED AND DEPOSITED

JULY 25 1991

LAND REGISTRAR FOR THE LAND TITLES  
DIVISION OF  
OTTAWA - CARLETON, NO. 4

PARTS 1 TO 7 BOTH INCLUSIVE - ALL OF PARCEL 26-3  
SECTION GLOUCESTER - 2 (OF)  
PART-2 SUBJECT TO AN EASEMENT AS IN INST. NO. NS 239  
PART-6 SUBJECT TO AN EASEMENT AS IN INST. NO. NS 3927  
PART-4 SUBJECT TO AN EASEMENT AS IN INST. NO. NS 241570  
PARTS 4, 5 & 7 SUBJECT TO A RIGHT OF WAY AS IN INST. NO. N440754



CAUTION THIS PLAN IS NOT A PLAN OF SUBDIVISION WITHIN THE MEANING  
OF THE PLANNING ACT.

SURVEYOR'S CERTIFICATE

I hereby certify that  
1 This survey and plan are correct and in  
accordance with the Surveys Act and the  
Land Titles Act and the regulations made  
thereunder.  
2 The survey was completed on  
OCTOBER 30 1990

NOVEMBER 1 1990  
J.G. PAYETTE  
Ontario Land Surveyor

NOTES

METRIC Distances shown on this plan are in  
metres and can be converted to feet  
by dividing by 0.3048

BEARING Bearings are astronomic and  
referred to the westerly limit  
CUMMINGS AVENUE, having  
a bearing of N22°17'20" W  
as shown on Plan SR-7398  
& accepted

LEGEND

■	Survey Monument Found
□	Survey Monument Set
IB	Iron Bar
SIB	Standard Iron Bar
CC	Short Standard Iron Bar
CC	Cut Cross
⊙	Round
Prop	Proportioned
Wit	Witness
Acc	Accepted
OU	Origin Unknown
Meas m m	Measured
CN	Concrete Nail
— (ms)	Not to Scale
990	J.G. Payette OLS
pl	Plan SR-7398
WBS	Webster & Simmonds
647	H.R. Farley OLS
RMOC	Regional Municipality of Ottawa - Carleton
671	F.H. Gooch OLS
AOG	Amis, O'Sullivan & Galtz

J.G. PAYETTE LTD.  
ONTARIO LAND SURVEYOR  
VANIER - ROCKLAND, ONTARIO





Committee of Adjustment  
Received | Reçu le  
**2022-10-04**  
City of Ottawa | Ville d'Ottawa  
Comité de dérogation