

Committee of Adjustment
Received | Reçu le

2022-10-04
City of Ottawa | Ville d'Ottawa
Comité de dérogation

PLAN 4R-34779
Received and deposited
July 21st, 2022
Mary Beth Ouellette
Representative for the
Land Registrar for the
Land Titles Division of
Ottawa-carleton (No.4)

SCHEDULE		
PART	LOT	CONCESSION
1	PART OF 26	ALL OF 04264-0160
2		
3		
4		
5	PART OF 27	2 (OTTAWA FRONT)
6		
7		
8		
9	PART OF 28	PART OF 04264-0006
10		
11		
12		
13	PART OF 27	ALL OF 04264-0152
14		
15		
16		
17	PART OF 27	PART OF 04264-0162
18		
19		

Parts 2 & 3 : Subject to Easement per Expropriation Plan NS11419
Parts 11, 12 & 13 : Subject to Easement Inst. N40754, LT730132.
Part 13 : Subject to Easement Inst. NS327.
Parts 5 & 7 : Subject to Easement Inst. CT224863.
Part 19 : Subject to Easement Inst. GL85383.

PLAN OF SURVEY OF
PART OF LOTS 26 AND 27
CONCESSION 2 (OTTAWA FRONT)
Geographic Township of Gloucester
CITY OF OTTAWA
Surveyed by Annis, O'Sullivan, Vollebakk Ltd.
Scale 1 : 250
The intended plot size of this plan is 1067 mm in width by 914 mm in height when plotted at a scale of 1:250.

Metric
DISTANCES AND COORDINATES SHOWN ON THIS PLAN
ARE IN METRES AND CAN BE CONVERTED TO FEET BY
DIVIDING BY 0.3048.

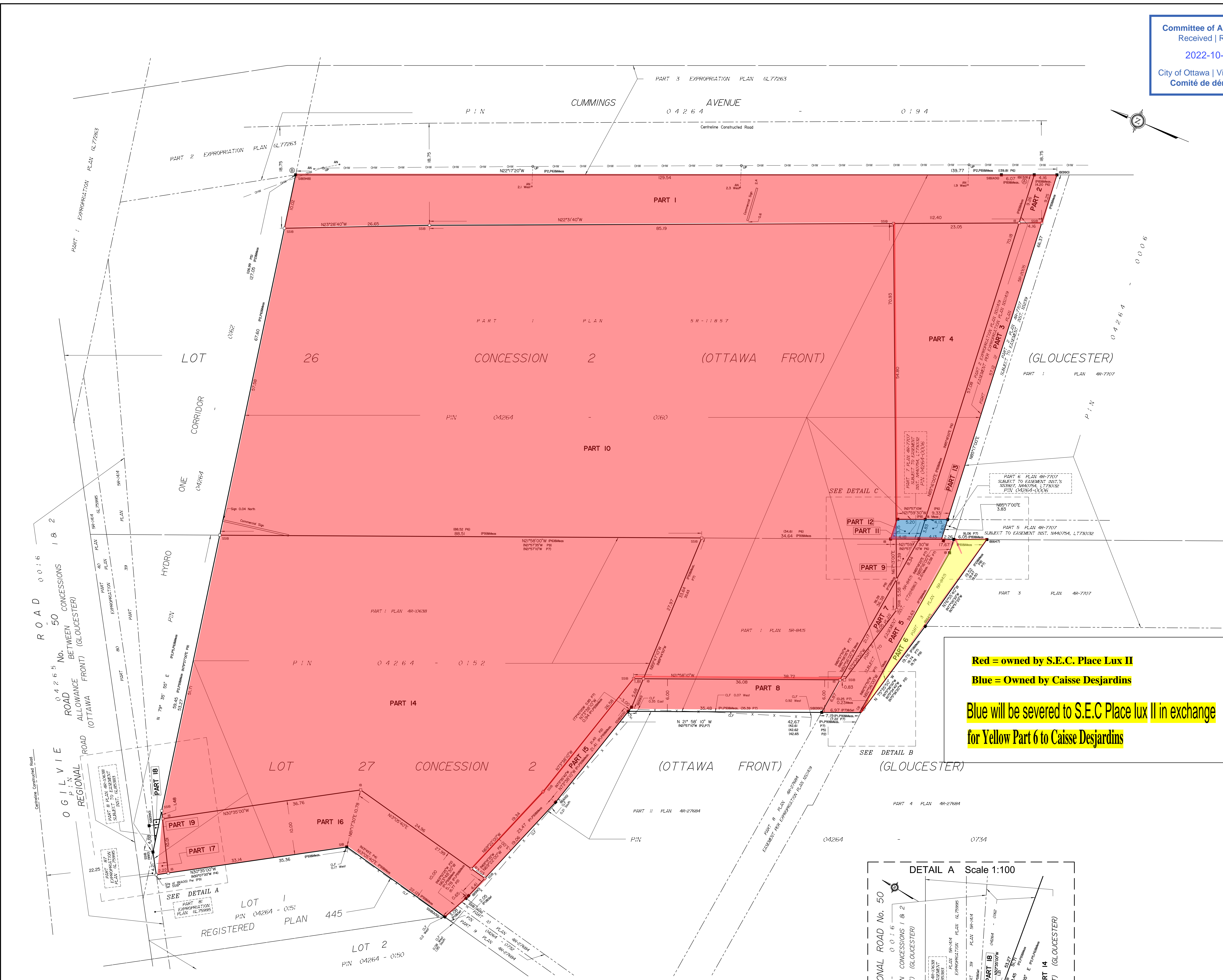
Surveyor's Certificate
I CERTIFY THAT:
1. This survey and plan are correct and in accordance with the Surveys Act, the Surveyors Act and the Land Titles Act and the regulations made under them.
2. The survey was completed on the 10th day of March, 2022.

June 6, 2022
Date
Ontario Land Surveyor

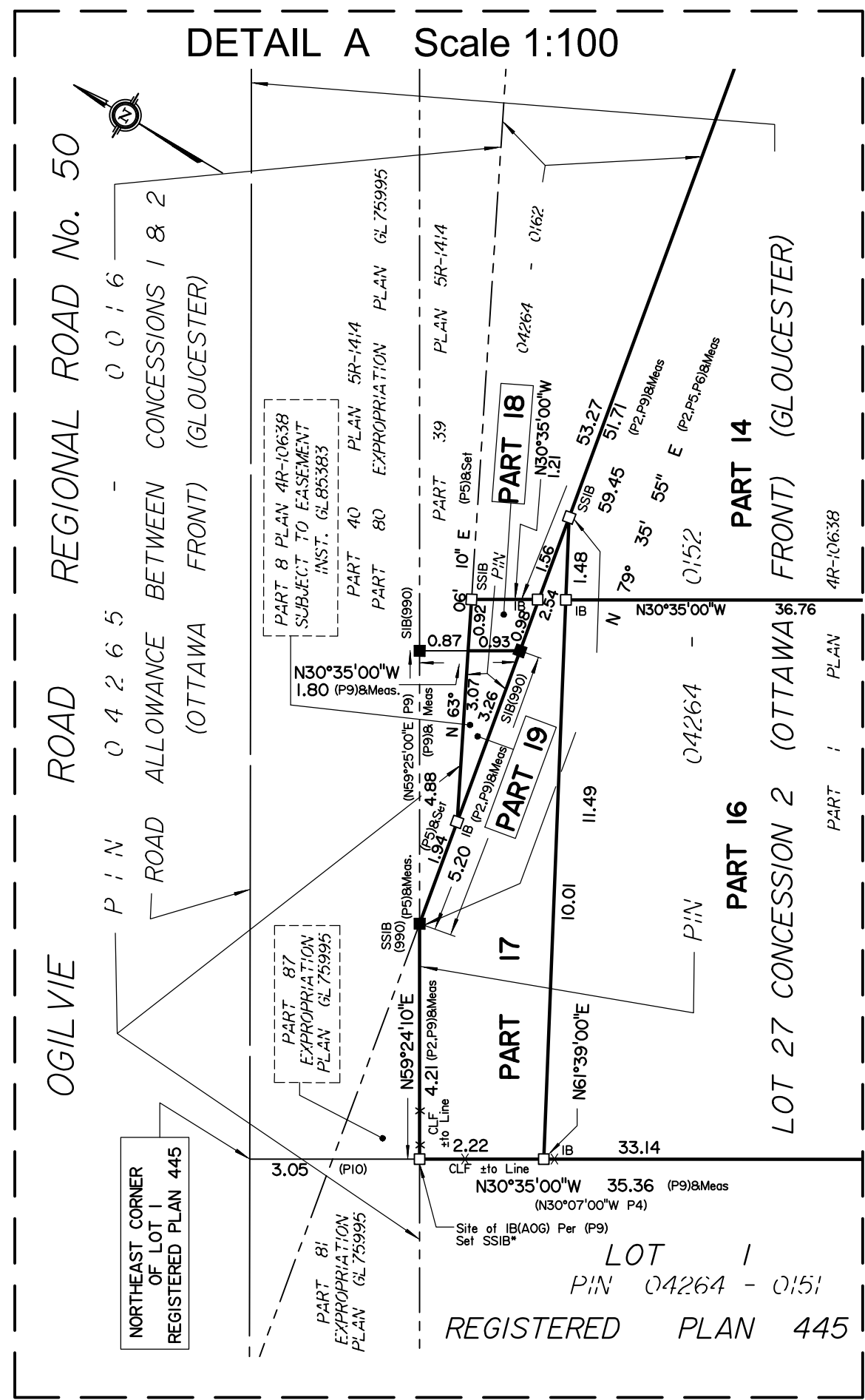
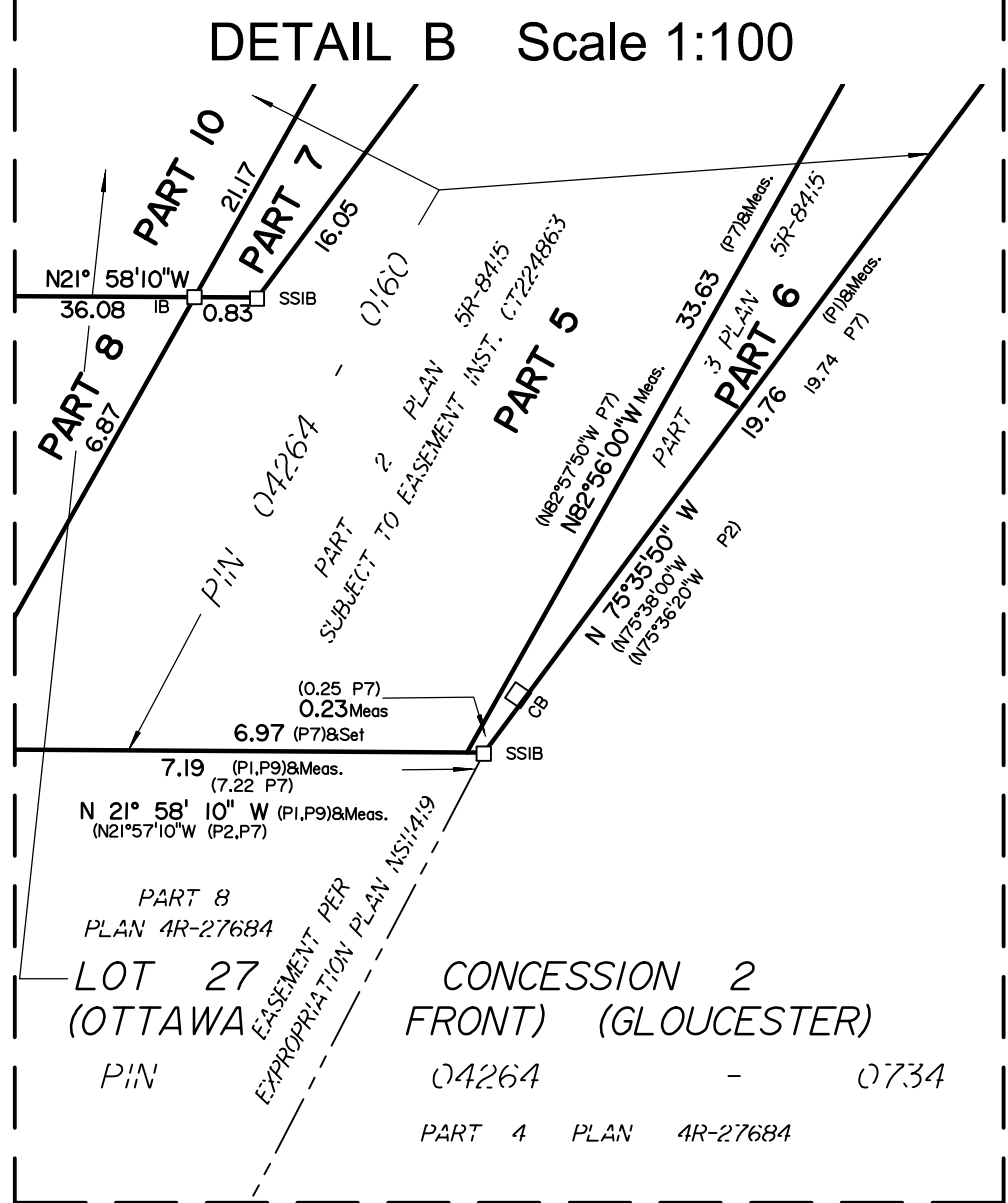
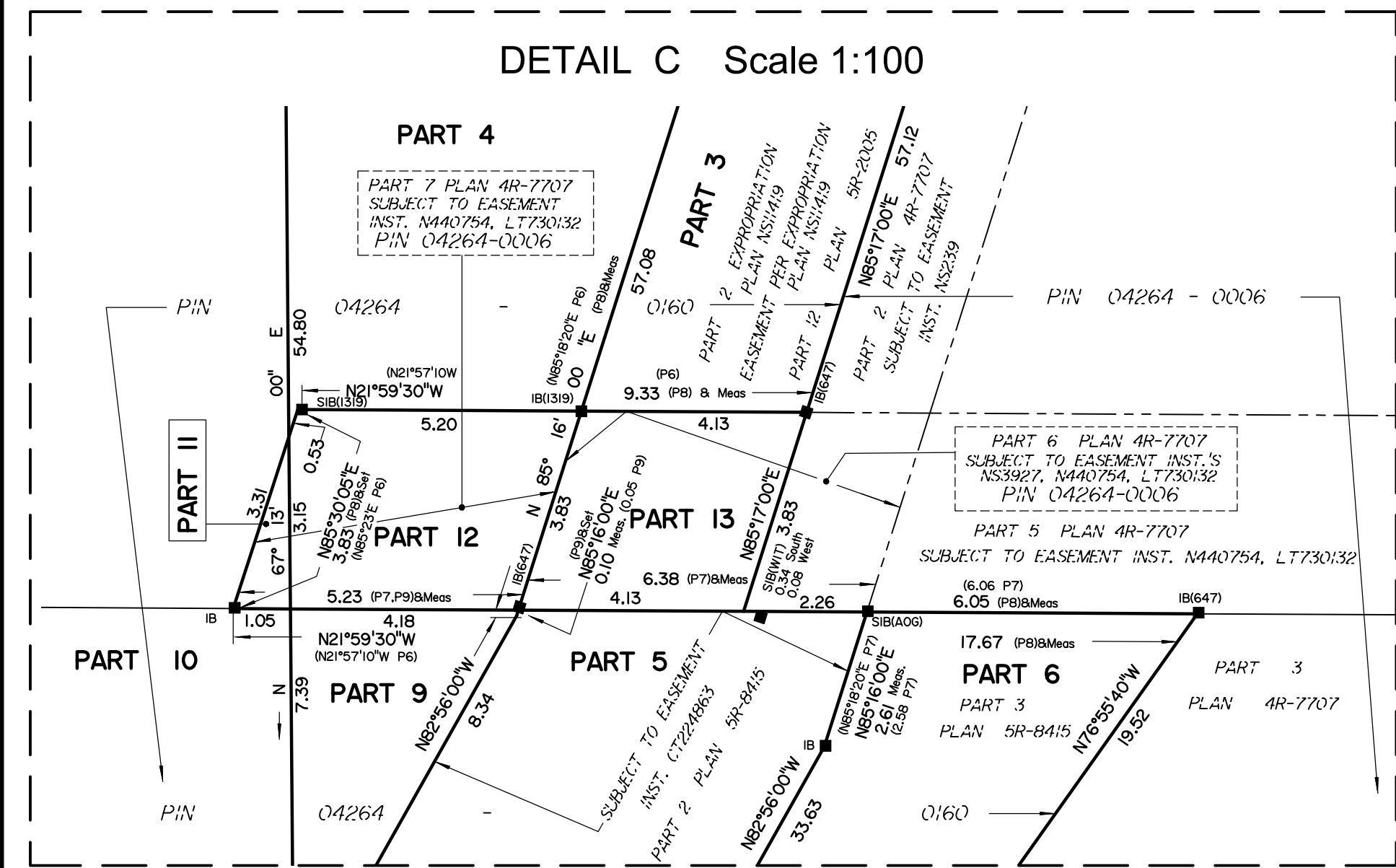
This plan relates to AOLS Plan Submission form number: V-27637

Notes & Legend
—○— Denotes Survey Monument Planted
—■— Survey Monument Found
—SSIB— Standard Iron Bar
—SSIB— Short Standard Iron Bar
—B— Iron Bar
—RIB— Round Iron Bar
—M— Measured
—WIT— Witness
—(WIT)— Annis, O'Sullivan, Vollebakk Ltd.
—(P1)— Plan 4R-27684
—(A0)— Plan, Ref. 4355-04, Dated March 30, 2004
—(P2)— Plan 4R-2005
—(P3)— Registered Plan 445
—(P4)— Plan 4R-1414
—(P5)— Plan 4R-1167
—(P6)— Plan 4R-1415
—(P7)— Plan 4R-7707
—(P8)— Plan 4R-10038
—(P9)— Expropriation Plan GL7995
—(P10)— Chain Link Fence
—CB— Catch Basin
—SW— Centreline of Multiple Overhead Wires
—UP— Utility Pole
—AN— Anchor

Distances shown on this plan are ground distances and can be converted to grid distances by multiplying by the combined scale factor of 0.99995.
Bearings are grid, derived from Can-Nat 2016 Real Time Network GPS observations referenced to Specified Control Points 01919680105 and 019196434761, NAD 83 Zone 18 (UTM Zone 18N, 73° West Longitude) NAD-83 (original).
For bearing comparisons, a relation of 0°01'55" clockwise was applied to bearings on Plan P9.
For comparison purposes, bearings shown on Plan P4 are astronomic bearings.
Coordinates are derived from Can-Nat 2016 Real Time Network GPS observations referenced to Specified Control Points 01919680105 and 019196434761, NAD 83 Zone 18 (UTM Zone 18N, 73° West Longitude) NAD-83 (original).
Coordinate values are to urban accuracy in accordance with O. Reg. 216/10.
• 01919680105 Northing 5024915.16 Easting 373971.65
• 019196434761 Northing 5036776.12 Easting 372436.11
• Point A Northing 5031890.15 Easting 372620.90
• Point B Northing 5032115.64 Easting 372769.44
Caution: Coordinates cannot, in themselves, be used to re-establish corners or boundaries shown on this plan.



Red = owned by S.E.C. Place Lux II
Blue = Owned by Caisse Desjardins
Blue will be severed to S.E.C Place lux II in exchange for Yellow Part 6 to Caisse Desjardins



Committee of Adjustment
Received | Reçu le
2022-10-04
City of Ottawa | Ville d'Ottawa
Comité de dérogation

PLAN 4R-34779
Received and deposited
July 21st, 2022
Mary Beth Ouellette
Representative for the
Land Registrar for the
Land Titles Division of
Ottawa-carleton (No.4)

SCHEDULE			
PART	LOT	CONCESSION	PIN
1	PART OF 26	2	ALL OF 04264-0160
2			
3			
4			
5	PART OF 27	(OTTAWA FRONT)	PART OF 04264-0006
6			
7			
8			
9	PART OF 26 & 27	(OTTAWA FRONT)	ALL OF 04264-0152
10			
11			
12			
13	PART OF 26		PART OF 04264-0152
14			
15			
16			
17	PART OF 27		PART OF 04264-0162
18			
19			

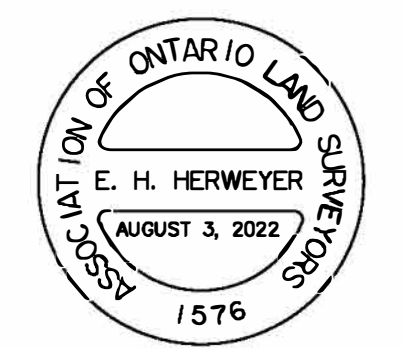
Parts 2 & 3: Subject to Easement per Expropriation Plan NS11419
Parts 11, 12 & 13: Subject to Easement Inst. N440754, LT730132
Part 13: Subject to Easement Inst. NS3927
Parts 5 & 7: Subject to Easement Inst. CT224863
Part 19: Subject to Easement Inst. GL85383

PLAN OF SURVEY OF
PART OF LOTS 26 AND 27
CONCESSION 2 (OTTAWA FRONT)
Geographic Township of Gloucester
CITY OF OTTAWA
Surveyed by Annis, O'Sullivan, Vollebakk Ltd.
Scale 1:250
The intended plot size of this plan is 1067 mm in width by 914 mm in height when plotted at a scale of 1:250.

Metric
DISTANCES AND COORDINATES SHOWN ON THIS PLAN
ARE IN METRES AND CAN BE CONVERTED TO FEET BY
DIVIDING BY 0.3048.

Surveyor's Certificate
I CERTIFY THAT:
1. This survey and plan are correct and in accordance with the Surveys
Act, the Surveyors Act and the Land Titles Act and the regulations
made under them.
2. The survey was completed on the 10th day of March, 2022.

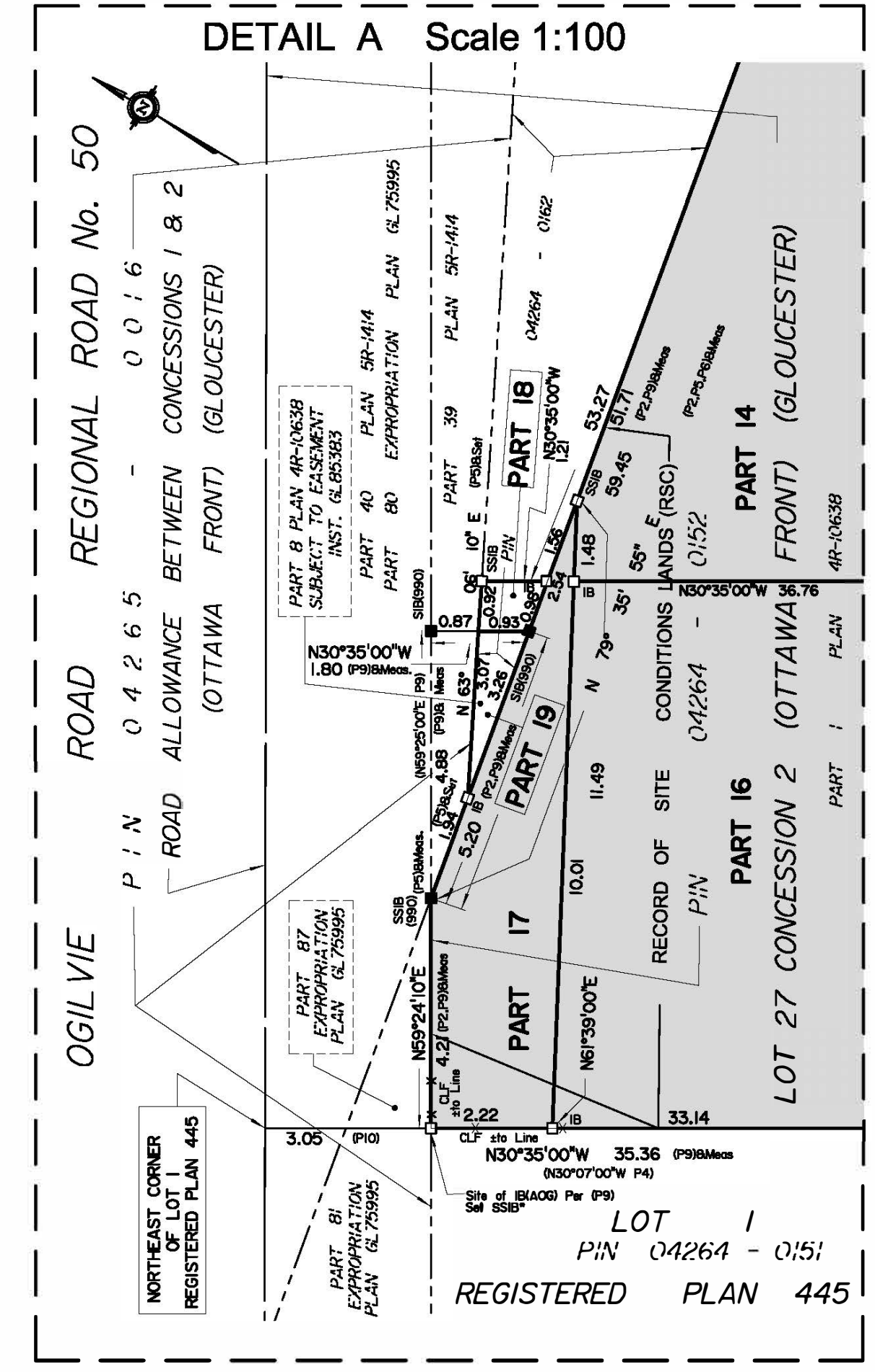
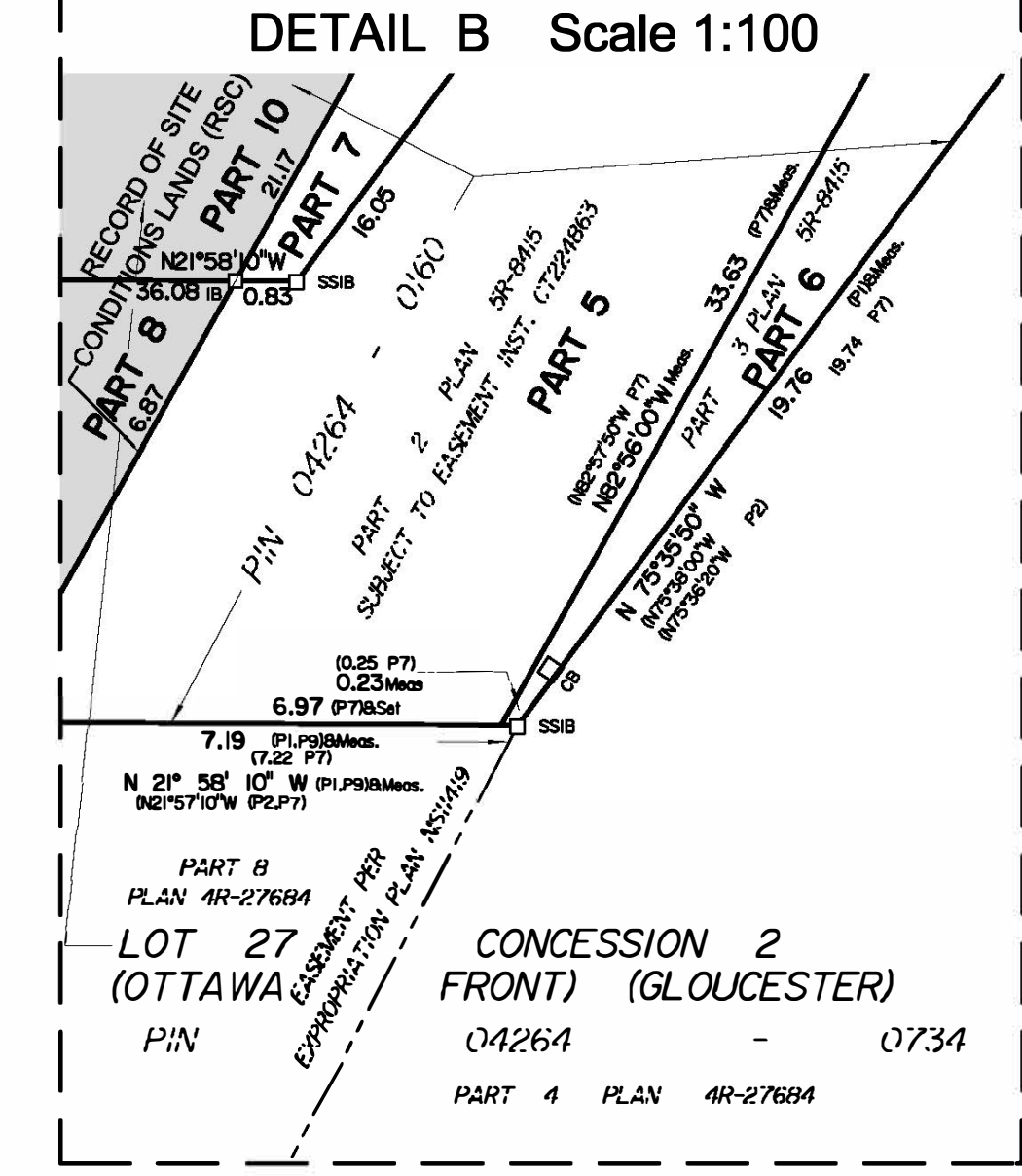
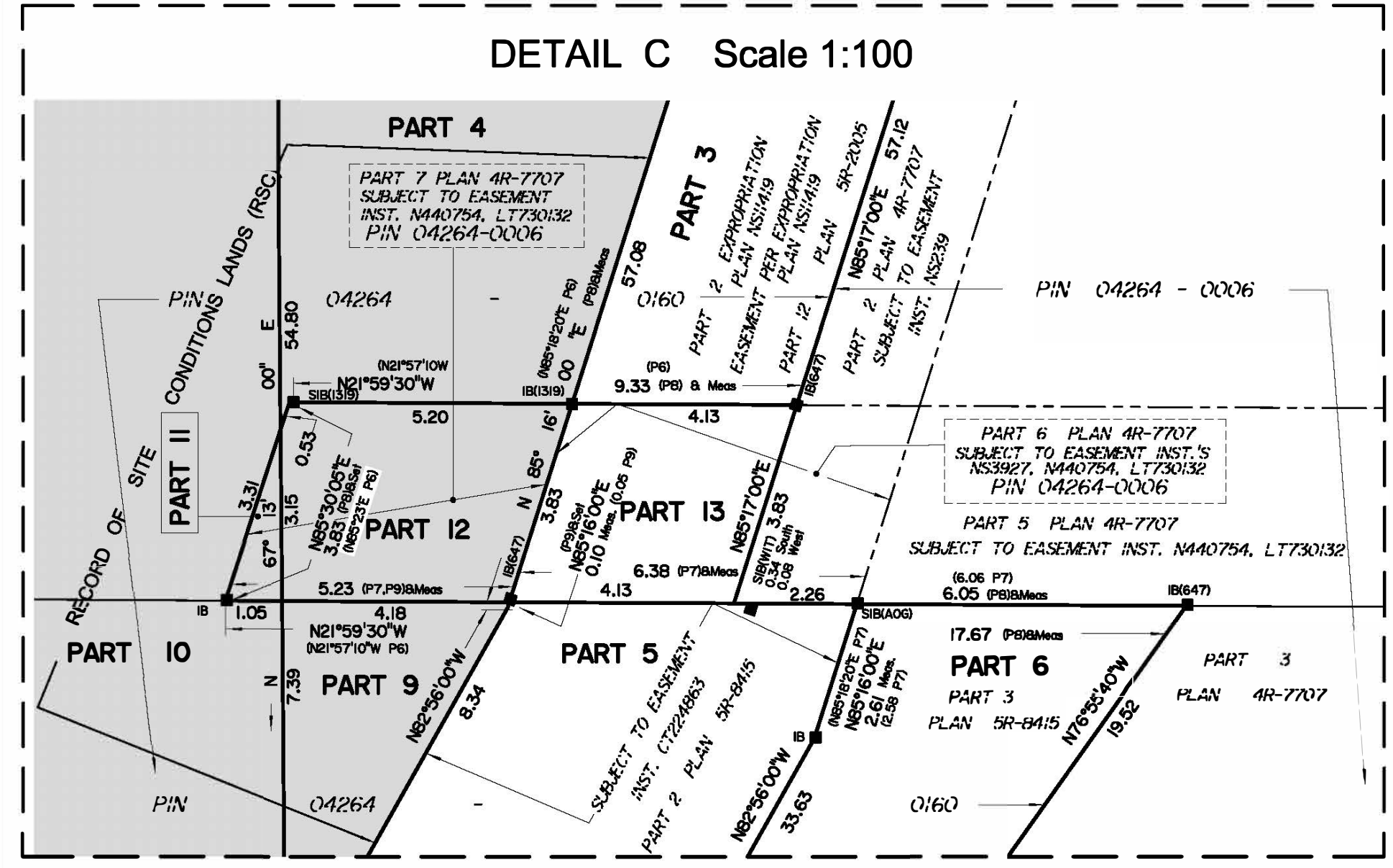
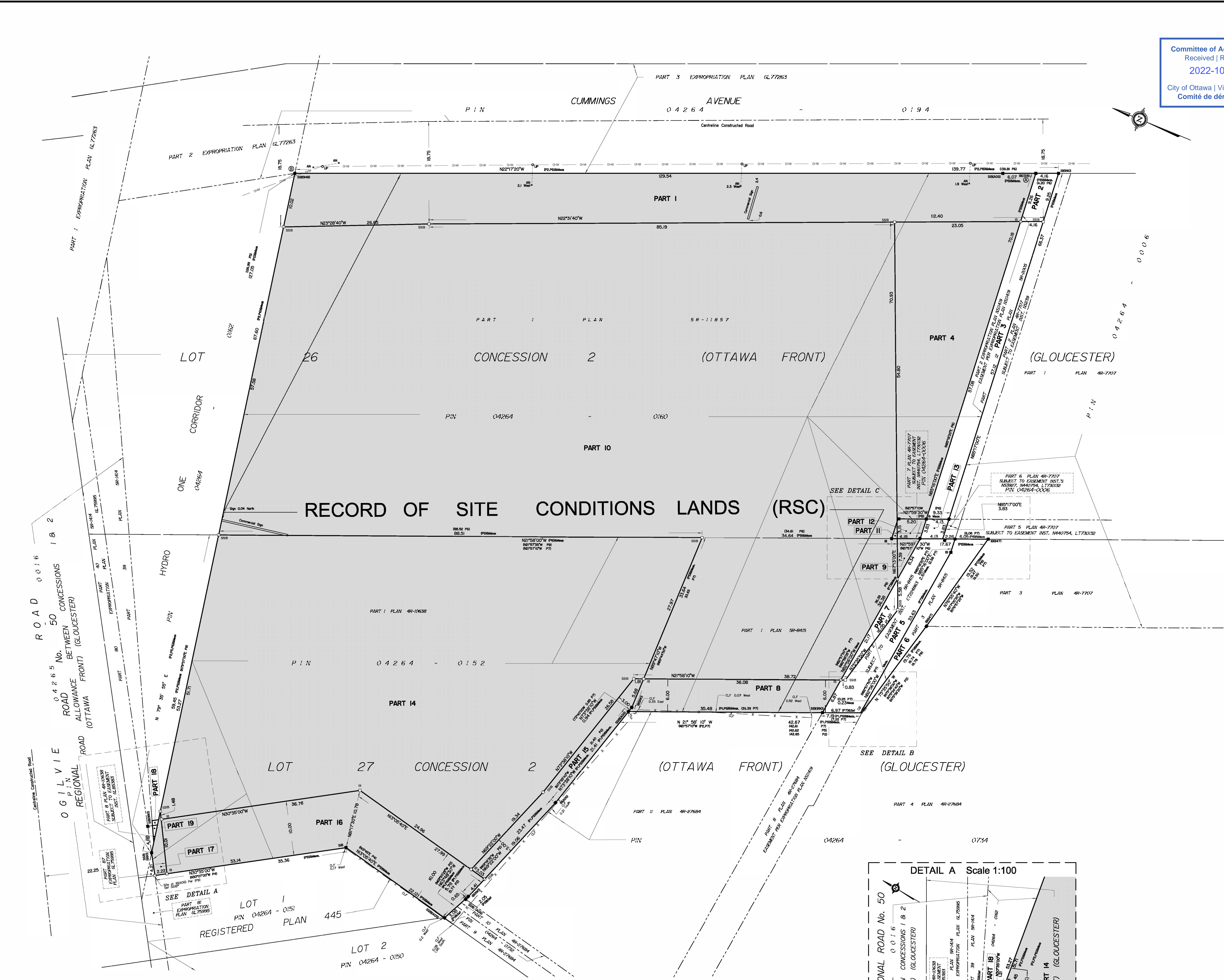
June 6, 2022
Date
Ontario Land Surveyor
This plan relates to AOLS Plan Submission form number: V-27637



Notes & Legend
- D - Denotes Survey Monument Planted
- S - Survey Monument Found
- SIB - Standard Iron Bar
- SIBS - Short Standard Iron Bar
- IB - Iron Bar
- BSB - Round Iron Bar
- BSB - Survey Monument 0.3 metres Long
- W - Witness
- (WT) - Witness
- (ACS) - Annis, O'Sullivan, Vollebakk Ltd.
- (P1) - Plan 4R-27694
- (P2) - (ACS) Plan, Ref. 4535-04, Dated March 30, 2004
- (P3) - Plan 4R-2095
- (P4) - Registered Plan 445
- (P5) - Plan 4R-1414
- (P6) - Plan 4R-11857
- (P7) - Plan 4R-8415
- (P8) - Plan 4R-7707
- (P9) - Plan 4R-10638
- (P10) - Expropriation Plan GL75995
- CLF - Chain Link Fence
- CB - Catch Basin
- CLF - Centreline of Multiple Overhead Wires
- UP - Utility Pole
- AN - Anchor
- Record of Site Conditions Lands (RSC)

Distances shown on this plan are ground distances and can be converted to grid distances by multiplying by the combined scale factor of 0.99995.
Bearings are grid, derived from Can-Net 2016 Real Time Network GPS observations on reference points A and B, shown herein, having a bearing of N22°17'20"W and are referenced to Specified Corner Points 0191980105 and 019198434761, MTM Zone 9 (78°30' West Longitude) NAD-83 (original).
For bearing comparisons, a rotation of 0°01'55" clockwise was applied to bearings on Plan P9.
For comparison purposes, bearings shown on Plan P4 are astronomic bearings.
Coordinates are derived from Can-Net 2016 Real Time Network GPS observations referenced to Specified Control Points 0191980105 and 019198434761, MTM Zone 9 (78°30' West Longitude) NAD-83 (original).
Coordinate values are to urban accuracy in accordance with O. Reg. 216/10.
- 0191980105 Northing 5024915.16 Easting 373271.65
- 019198434761 Northing 5025178.12 Easting 372436.11
- Point A Northing 5031990.13 Easting 372820.80
- Point B Northing 5032115.61 Easting 372768.44
Caution: Coordinates cannot, in themselves, be used to re-establish corners or boundaries shown on this plan.

ANNIS, O'SULLIVAN, VOLLEBEKK LTD.
14 Concourse Gate, Suite 200
Nepean, Ont. K2E 7S6
Phone: (613) 737-6557 / Fax: (613) 737-1079
Email: info@anniso.com
Ontario
Land Surveyors (Reg. No. 2498-21-04, 25, 26, 27, 28, 29, 30, 31, 32, 33, 34, 35, 36, 37, 38, 39, 40, 41, 42, 43, 44, 45, 46, 47, 48, 49, 50, 51, 52, 53, 54, 55, 56, 57, 58, 59, 60, 61, 62, 63, 64, 65, 66, 67, 68, 69, 70, 71, 72, 73, 74, 75, 76, 77, 78, 79, 80, 81, 82, 83, 84, 85, 86, 87, 88, 89, 90, 91, 92, 93, 94, 95, 96, 97, 98, 99, 100)



PLAN OF SURVEY OF
Part of Lots 26 & 27, Concession 2 (Ottawa Front)
Geographical Township of Gloucester
City of Gloucester
Regional Municipality of Ottawa - Carleton

Surveyed by J.G. Payette, OLS
1990

Scale 1:300



OC - 5815
App. no. 0088-4-705

I REQUIRE THIS PLAN TO BE
DEPOSITED UNDER THE LAND TITLES
ACT

NOVEMBER 1 1990
J.G. PAYETTE
Ontario Land Surveyor

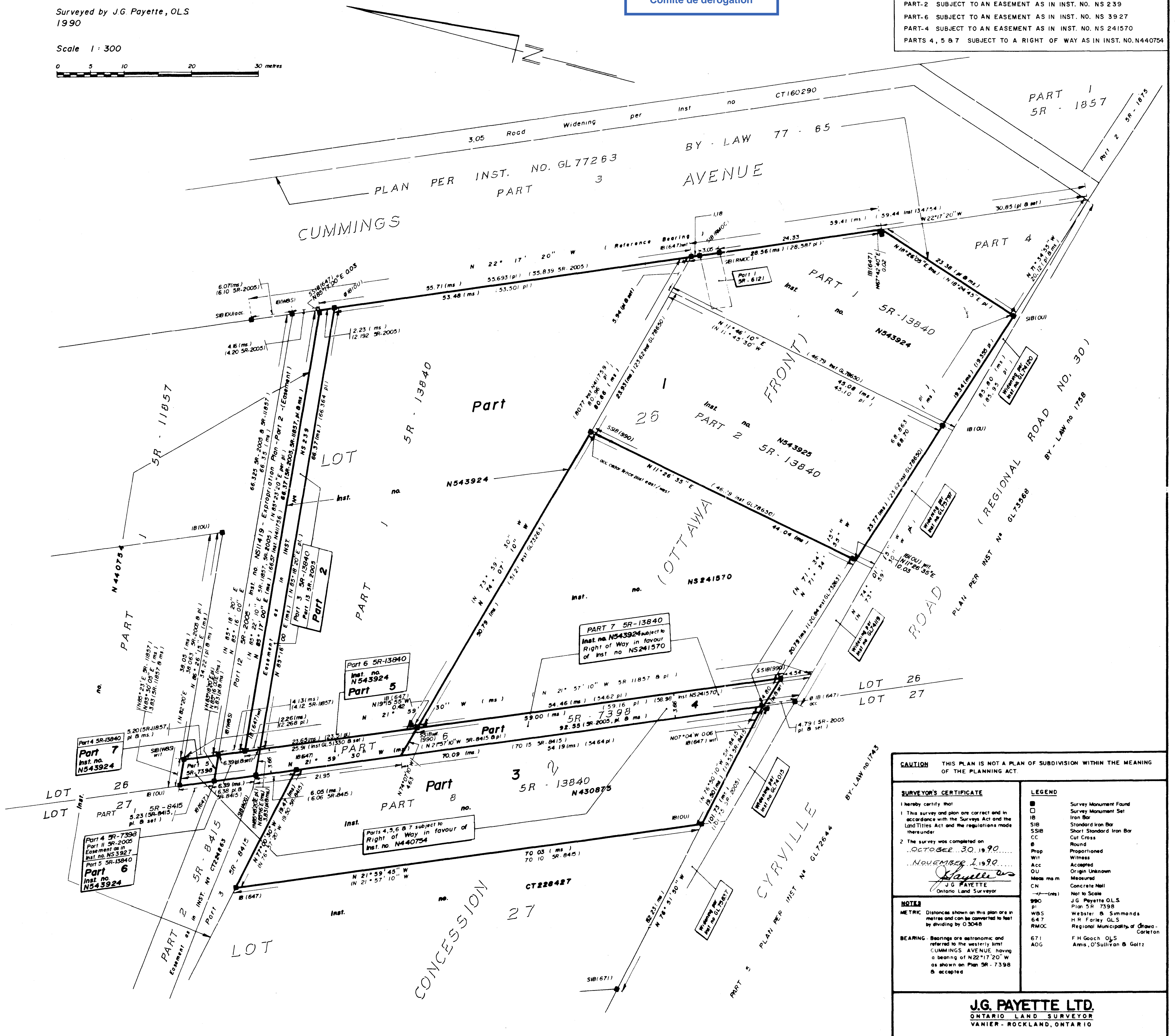
APPROVED JUNE 25 1991
Assistant Examiner of Surveys

PLAN 4 R-7707

RECEIVED AND DEPOSITED
JULY 25 1991
LAND REGISTRAR FOR THE LAND TITLES
DIVISION OF
OTTAWA - CARLETON, NO. 4

Committee of Adjustment
Received | Reçu le
2022-11-09
City of Ottawa | Ville d'Ottawa
Comité de dérogation

PARTS 1 TO 7 BOTH INCLUSIVE - ALL OF PARCEL 26-3
SECTION GLOUCESTER - 2 (OF)
PART-2 SUBJECT TO AN EASEMENT AS IN INST. NO. NS 239
PART-6 SUBJECT TO AN EASEMENT AS IN INST. NO. NS 3927
PART-4 SUBJECT TO AN EASEMENT AS IN INST. NO. NS 241570
PARTS 4, 5 & 7 SUBJECT TO A RIGHT OF WAY AS IN INST. NO. N440754



CAUTION THIS PLAN IS NOT A PLAN OF SUBDIVISION WITHIN THE MEANING OF THE PLANNING ACT.

SURVEYOR'S CERTIFICATE

I hereby certify that
1 This survey and plan are correct and in accordance with the Surveys Act and the Land Titles Act and the regulations made thereunder.
2 The survey was completed on
OCTOBER 30 1990
NOVEMBER 1 1990
J.G. PAYETTE
Ontario Land Surveyor

NOTES

METRIC Distances shown on this plan are in metres and can be converted to feet by dividing by 0.3048
BEARING Bearings are astronomic and referred to the westerly limit CUMMINGS AVENUE, having a bearing of N22°17'20" W as shown on Plan SR-7398 & accepted

LEGEND

- Survey Monument Found
- Survey Monument Set
- Iron Bar
- Standard Iron Bar
- Short Standard Iron Bar
- CC
- Cut Cross
- Round
- Prop
- Witness
- Acc
- Origin Unknown
- Meas m m
- Concrete Nail
- Not to Scale
- 990
- J.G. Payette OLS
- Plan SR-7398
- WBS
- Webster & Simmonds
- 647
- H.R. Farley OLS
- Regional Municipality of Ottawa - Carleton
- 671
- F.H. Gooch OLS
- AOG
- Amis, O'Sullivan & Galtz

J.G. PAYETTE LTD.
ONTARIO LAND SURVEYOR
VANIER - ROCKLAND, ONTARIO