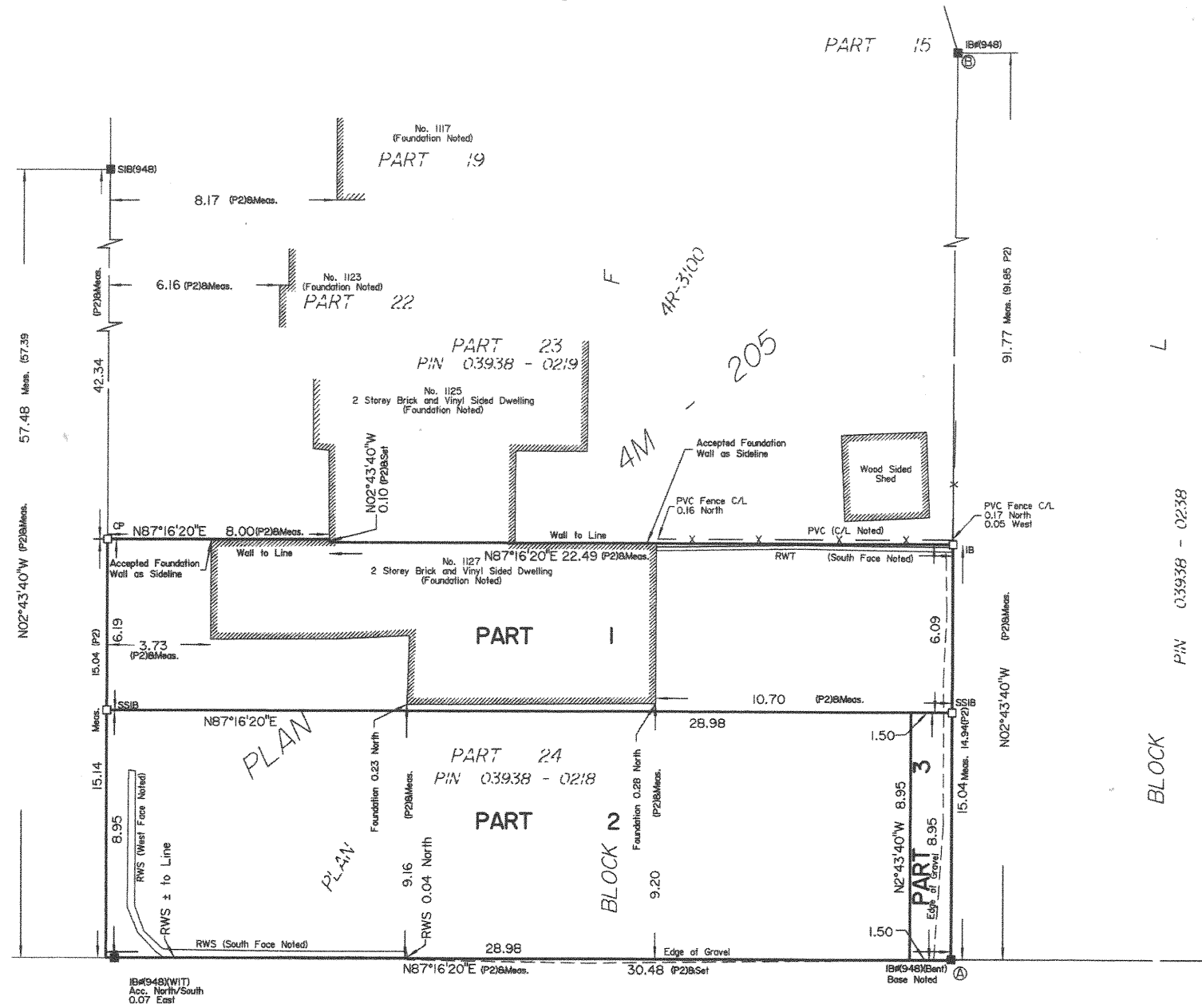


AVIGNON COURT  
(Formerly Moonglow Court)

PIN 03938 - 0241



REGISTERED

JEANNE

D'ARC  
PIN 03938 - 0244

BOULEVARD

Committee of Adjustment  
Received | Reçu le  
Oct 31 2022  
City of Ottawa | Ville d'Ottawa  
Comité de dérogation

I REQUIRE THIS PLAN TO BE  
DEPOSITED UNDER THE  
LAND TITLES ACT.  
DATE: \_\_\_\_\_

PLAN 4R-  
RECEIVED AND DEPOSITED  
DATE: \_\_\_\_\_

T. HARTWICK  
ONTARIO LAND SURVEYOR

REPRESENTATIVE FOR  
LAND REGISTRAR FOR THE  
LAND TITLES DIVISION OF  
OTTAWA-CARLETON NO. 4.

#### SCHEDULE

AREA (Sq.m.)	PART	BLOCK	PLAN	PIN
186.4	1			
259.4	2	PART OF F	4M-205	ALL OF 03938-0218
13.4	3			

#### PLAN OF SURVEY OF

### PART OF BLOCK F REGISTERED PLAN 4M-205 CITY OF OTTAWA

Surveyed by Annis, O'Sullivan, Vollebakk Ltd.

Scale 1 : 150



#### Metric

DISTANCES AND COORDINATES SHOWN ON THIS PLAN  
ARE IN METRES AND CAN BE CONVERTED TO FEET BY  
DIVIDING BY 0.3048.

#### Surveyor's Certificate

I CERTIFY THAT:

- This survey and plan are correct and in accordance with the Surveys Act, the Surveyors Act, and the Land Titles Act and the regulations made under them.
- The survey was completed on the 29th day of April, 2021.

Date

T. Hartwick  
Ontario Land Surveyor

Distances shown on this plan are ground distances and can be converted to grid distances by multiplying by the combined scale factor of 0.999962.

Bearings are grid, derived from Can-Net 2016 Real Time Network GPS observations on reference points A and B, shown hereon, having a bearing of N02°43'40"W and are referenced to Specified Control Points 01919680184 and 019198434761, MTM Zone 9 (76°30' West Longitude) NAD-83 (original).

For comparison purposes, a rotation of 0°02'10" clockwise was applied to bearings on P1 and P2.

Coordinates are derived from Can-Net 2016 Real Time Network GPS observations referenced to Specified Control Points 01919680184 and 019198434761, MTM Zone 9 (76°30' West Longitude) NAD-83 (original).

Coordinate values are to urban accuracy in accordance with O. Reg. 216/10.

.01919680184	Northing	5040610.16	Easting	384736.56
.019198434761	Northing	5036178.12	Easting	372436.11
.Point A	Northing	5038509.55	Easting	380658.03
.Point B	Northing	5038601.19	Easting	380653.66

Caution: Coordinates cannot, in themselves, be used to re-establish corners or boundaries shown on this plan.

**ANNIS, O'SULLIVAN, VOLLEBEKK LTD.**  
14 Concourse Gate, Suite 500  
Nepean, Ont. K2E 7S6  
Phone: (613) 727-0850 / Fax: (613) 727-1079  
Email: Nepean@aovlto.com