

I REQUIRE THIS PLAN TO BE DEPOSITED UNDER THE LAND TITLES ACT.
 DATE: _____

PLAN 4R-
 RECEIVED AND DEPOSITED
 DATE: _____

 T. HARTWICK
 ONTARIO LAND SURVEYOR

 REPRESENTATIVE FOR
 LAND REGISTRAR FOR THE
 LAND TITLES DIVISION OF
 OTTAWA-CARLETON NO. 4.

SCHEDULE				
AREA (Sq.m.)	PART	LOT	CONCESSION	PIN
5529.0	1	PART OF 31	1	PART OF 04300-0008

PLAN OF SURVEY OF
PART OF LOT 31
CONCESSION 1
GEOGRAPHIC TOWNSHIP OF OSGOODE
CITY OF OTTAWA

Surveyed by Annis, O'Sullivan, Vollebakk Ltd.



Metric
 DISTANCES AND COORDINATES SHOWN ON THIS PLAN ARE IN METRES AND CAN BE CONVERTED TO FEET BY DIVIDING BY 0.3048.

Surveyor's Certificate
 I CERTIFY THAT:
 1. This survey and plan are correct and in accordance with the Surveys Act, the Surveyors Act and the Land Titles Act and the regulations made under them.
 2. The survey was completed on the ___ day of _____, 2022.

 Date _____ T. Hartwick
 Ontario Land Surveyor

Notes & Legend

□	Denotes	Survey Monument Planted
■	"	Survey Monument Found
SIB	"	Standard Iron Bar
SSIB	"	Short Standard Iron Bar
IB	"	Iron Bar
(WIT)	"	Witness
(AOG)	"	Annis, O'Sullivan, Vollebakk Ltd.
Meas.	"	Measured
(P1)	"	(AOG) Plan dated October 20, 2021
○ UP	"	Utility Pole
○ AN	"	Anchor
— OHW	"	Overhead Wires
○ W	"	Well Cap

Distances shown on this plan are ground distances and can be converted to grid distances by multiplying by the combined scale factor of 0.999948.

Bearings are grid, derived from Can-Net 2016 Real Time Network GPS observations on points A and B, shown hereon, having a bearing of N58°14'40"E and are referred to the Central Meridian of MTM Zone 9 NAD-83 (CSRS) (1997.0).

Coordinates are derived from Can-Net 2016 Real Time Network GPS observations and are referred to the Central Meridian of MTM Zone 9 NAD-83 (CSRS) (1997.0).
 A datum grid shift was applied to the observations to convert from NAD-83 (CSRS) (2010) to NAD-83 (CSRS) (1997.0) values.

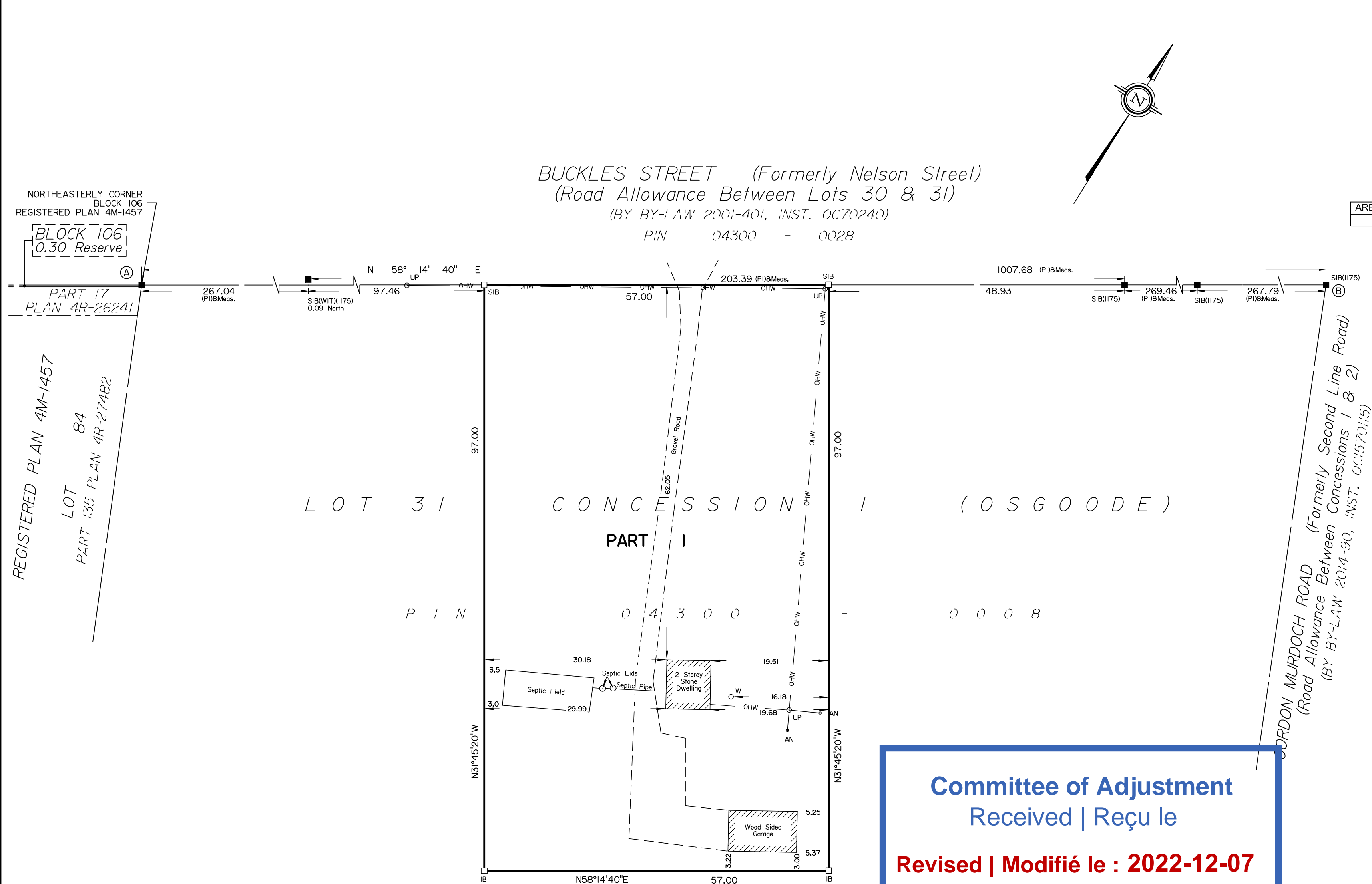
Coordinate values are to urban accuracy in accordance with O. Reg. 216/10.

. Point A Northing 5000242.64 Easting 375583.84
 . Point B Northing 5000772.95 Easting 376440.63

Caution: Coordinates cannot, in themselves, be used to re-establish corners or boundaries shown on this plan.

ANNIS, O'SULLIVAN, VOLLEBEKK LTD.
 14 Concourse Gate, Suite 500
 Nepean, Ont. K2E 7S6
 Phone: (613) 727-0850 / Fax: (613) 727-1079
 Email: Nepesain@novtd.com

Ontario Land Surveyors Job No. 22177-22 Urbandale PHL131 Con 1 R D3 ISW



Committee of Adjustment
 Received | Reçu le
Revised | Modifié le : 2022-12-07
 City of Ottawa | Ville d'Ottawa
 Comité de dérogation

Y:\URBAN\04300-0008\131\Drawings\22177-22\Urbandale_PHL131_Con_1R_D3.dwg