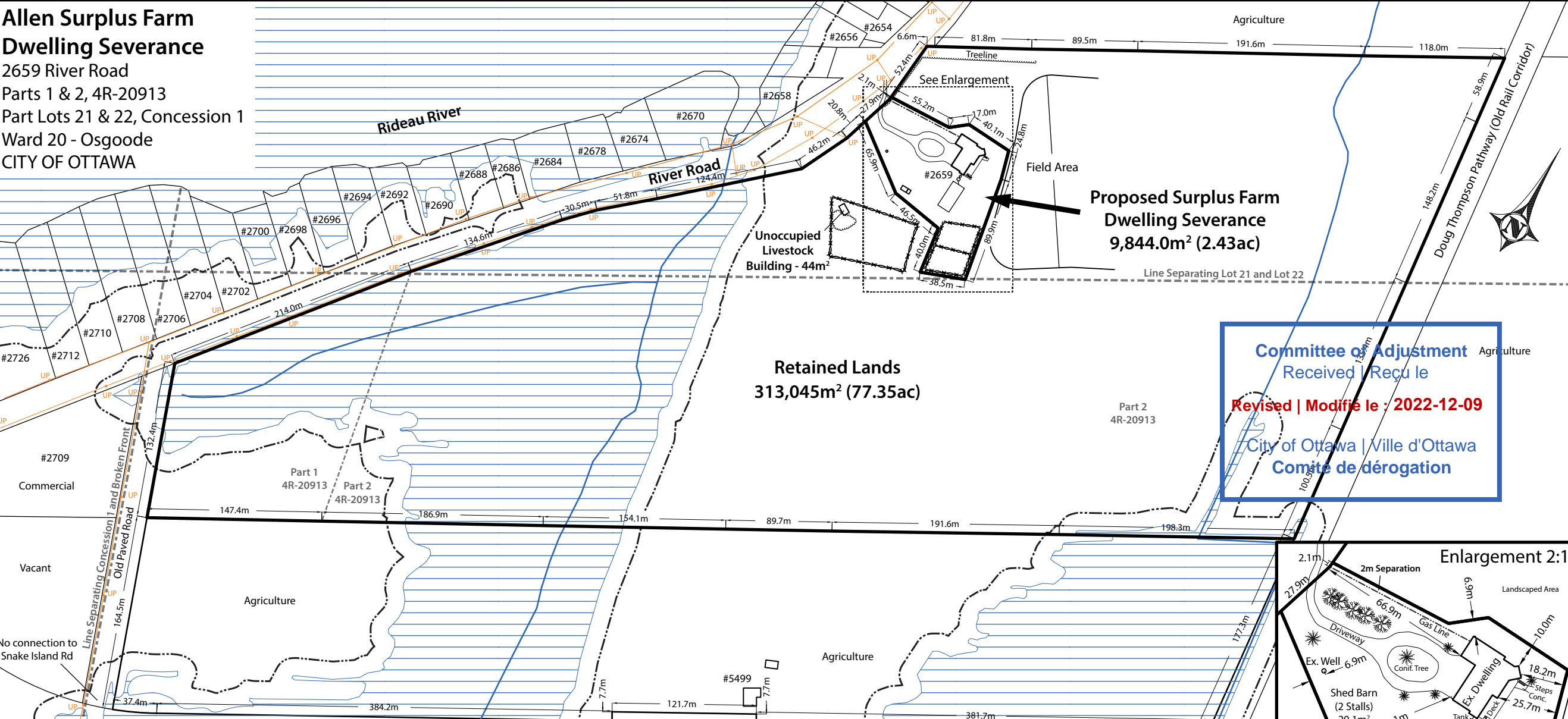
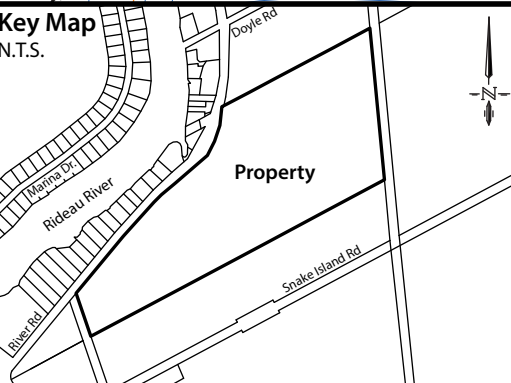


# Allen Surplus Farm Dwelling Severance

2659 River Road  
 Parts 1 & 2, 4R-20913  
 Part Lots 21 & 22, Concession 1  
 Ward 20 - Osgoode  
 CITY OF OTTAWA



**Committee of Adjustment**  
 Received | Reçu le  
**Revised | Modifié le : 2022-12-09**  
 City of Ottawa | Ville d'Ottawa  
 Comité de dérogation



Version Date: December 8, 2022

File No. 22-226 Drawn By: CC

**ZANDERPLAN**  
 Your rural land planning experts  
 40 Sunset Boulevard, Perth, ON K7H 2Y4 613-264-9600

**Legend**

- Floodplain
- Regulation Limit
- Watercourse
- Overhead Wires
- Utility Poles

**Notes:**

- 1) Location and size of the existing on-site sewage disposal system derived from the septic permit sketch provided by the property owners.
- 2) The existing shed barn and some paddock areas will remain with the severed lot. The livestock building on the retained lands will be removed.
- 3) Locations of the floodplain, regulation limit and watercourses derived from the Rideau Valley Conservation Authority and GeoOttawa mapping for the property.
- 4) Boundary and dimensions of the subject property derived from Plan 4R-20913 completed by Annis, O'Sullivan, Vollebek Ltd. in February of 2006.

