

METRIC
DISTANCES, COORDINATES AND ELEVATIONS SHOWN ON THIS PLAN ARE IN METRES AND CAN BE CONVERTED TO FEET BY DIVIDING BY 0.3048

PLAN PREPARED FOR COMMITTEE OF ADJUSTMENT PURPOSES
OCTOBER 27, 2022

SCHEDULE				
AREA (M ²)	PART	LOT	REGISTERED PLAN	PIN
160	1			
7	2			
17	3	PART OF LOT 27 (SOUTH OF CATHCART STREET)	42482	ALL OF 04217-0456
74	4			
16	5			
6	6			

I REQUIRE THIS PLAN TO BE DEPOSITED UNDER THE LAND TITLES ACT.
DATE: _____
REPRESENTATIVE FOR THE LAND TITLES DIVISION OF OTTAWA - CARLETON (N^o 4)
JOHN H. GUTRI, O.L.S.

THIS IS A STRATA PLAN

PLAN OF SURVEY OF PART OF LOT 27 (SOUTH OF CATHCART STREET) REGISTERED PLAN 42482 CITY OF OTTAWA

SCALE 1 : 100
0 1 2 3 4 5 10 metres
FAIRHALL, MOFFATT & WOODLAND LIMITED
ONTARIO LAND SURVEYORS

COORDINATES ARE GRID DERIVED FROM NCC HORIZONTAL CONTROL MONUMENTS 0199134816 (N 5032398.612, E 367616.329) AND 0199134818 (N 5032465.527, E 367655.566) AND ARE REFERRED TO THE CENTRAL MERIDIAN 76°30' W LONGITUDE, MTM ZONE 9 OF THE ONTARIO COORDINATE SYSTEM (NAD 83).

COORDINATES HAVE BEEN DETERMINED TO AN URBAN ACCURACY IN ACCORDANCE WITH SECTION 14(2) OF OREG 216/10.

POINT ID	NORTHING	EASTING
285	5033041.342	368215.563
286	5033022.405	367971.939
287	5033010.906	367979.199

COORDINATES CANNOT IN THEMSELVES BE USED TO RE-ESTABLISH CORNERS OR BOUNDARIES SHOWN ON THIS PLAN.

- NOTES**
- BEARINGS ARE GRID DERIVED FROM NCC HORIZONTAL CONTROL MONUMENTS 0199134816 (N 5032398.612, E 367616.329) AND 0199134818 (N 5032465.527, E 367655.566) AND ARE REFERRED TO THE CENTRAL MERIDIAN 76°30' W LONGITUDE, MTM ZONE 9 OF THE ONTARIO COORDINATE SYSTEM (NAD 83).
 - DISTANCES ARE GROUND AND CAN BE CONVERTED TO GRID BY MULTIPLYING BY THE COMBINED SCALE FACTOR 0.999945.
 - ELEVATIONS ARE REFERRED TO GEODETIC DATUM (CGVD2011).

- LEGEND**
- - SURVEY MONUMENT SET
 - - SURVEY MONUMENT FOUND
 - SB - STANDARD IRON BAR
 - SSIB - SHORT STANDARD IRON BAR
 - IB - IRON BAR
 - (P) - REGISTERED PLAN 42482
 - (P1) - PLAN OC1853633
 - (P2) - PLAN SR-13041
 - (P3) - PLAN SR-5041
 - (P4) - PLAN SR-9267
 - (P5) - PLAN SR-12147
 - (P6) - PLAN SR-13744
 - (S) - SET
 - (M) - MEASURED
 - (WT) - WITNESS
 - PIN - PROPERTY IDENTIFIER NUMBER
 - (857) - FAIRHALL, MOFFATT & WOODLAND LIMITED, O.L.S.
 - (NCC) - NATIONAL CAPITAL COMMISSION
 - (1491) - DENIS DUTRISAC, O.L.S.
 - (JDB) - J.D. BARNES LIMITED, O.L.S.

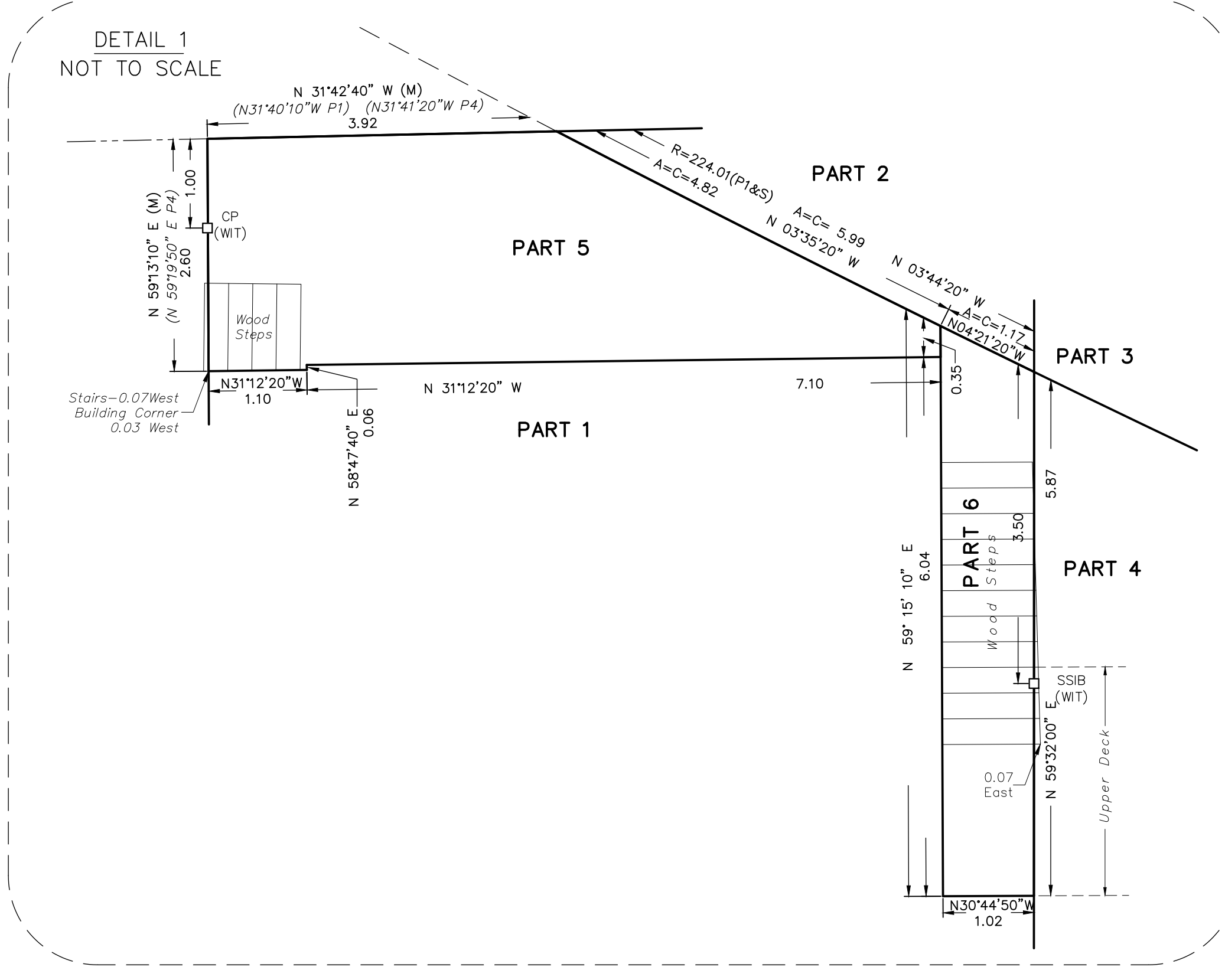
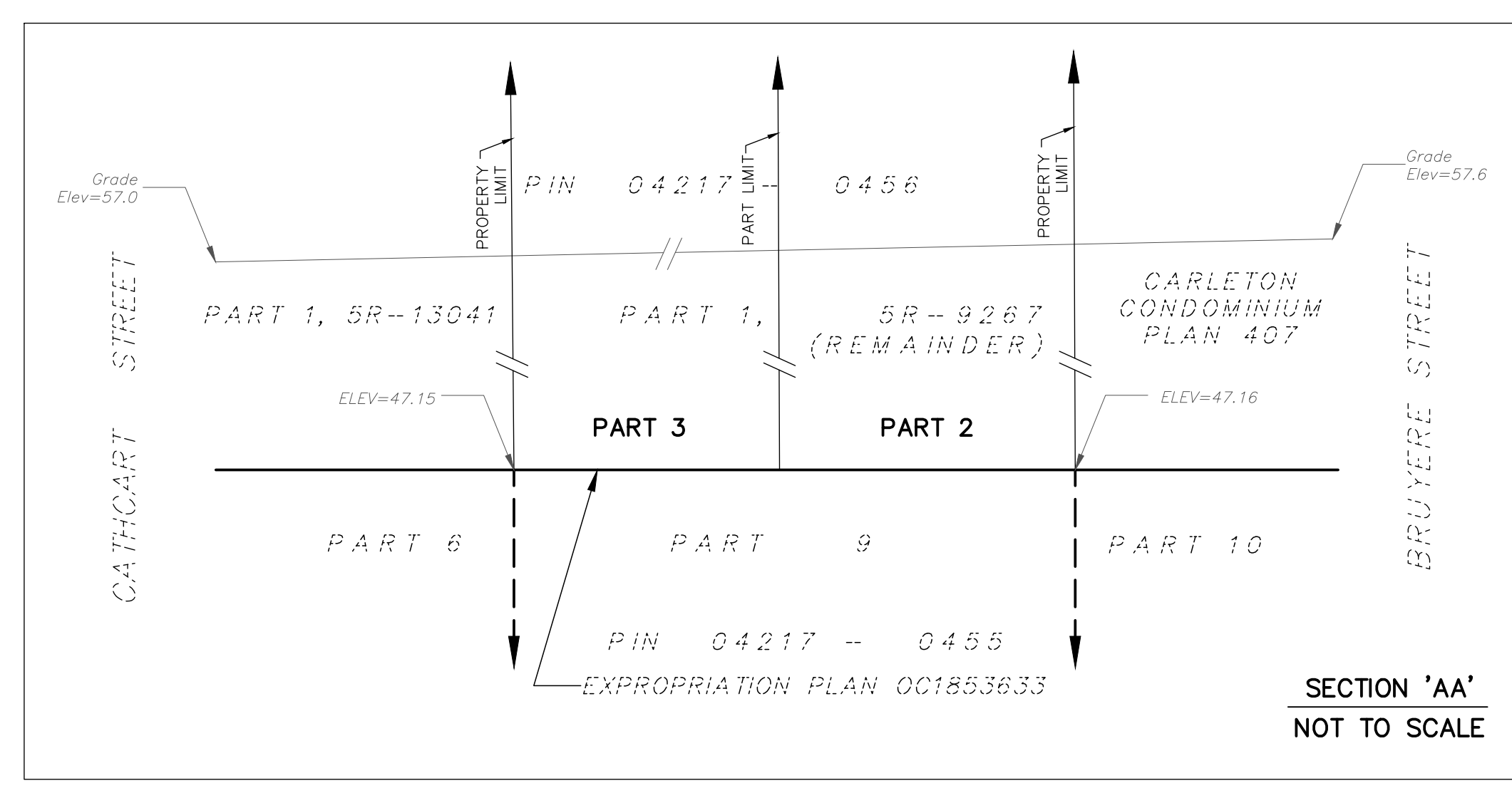
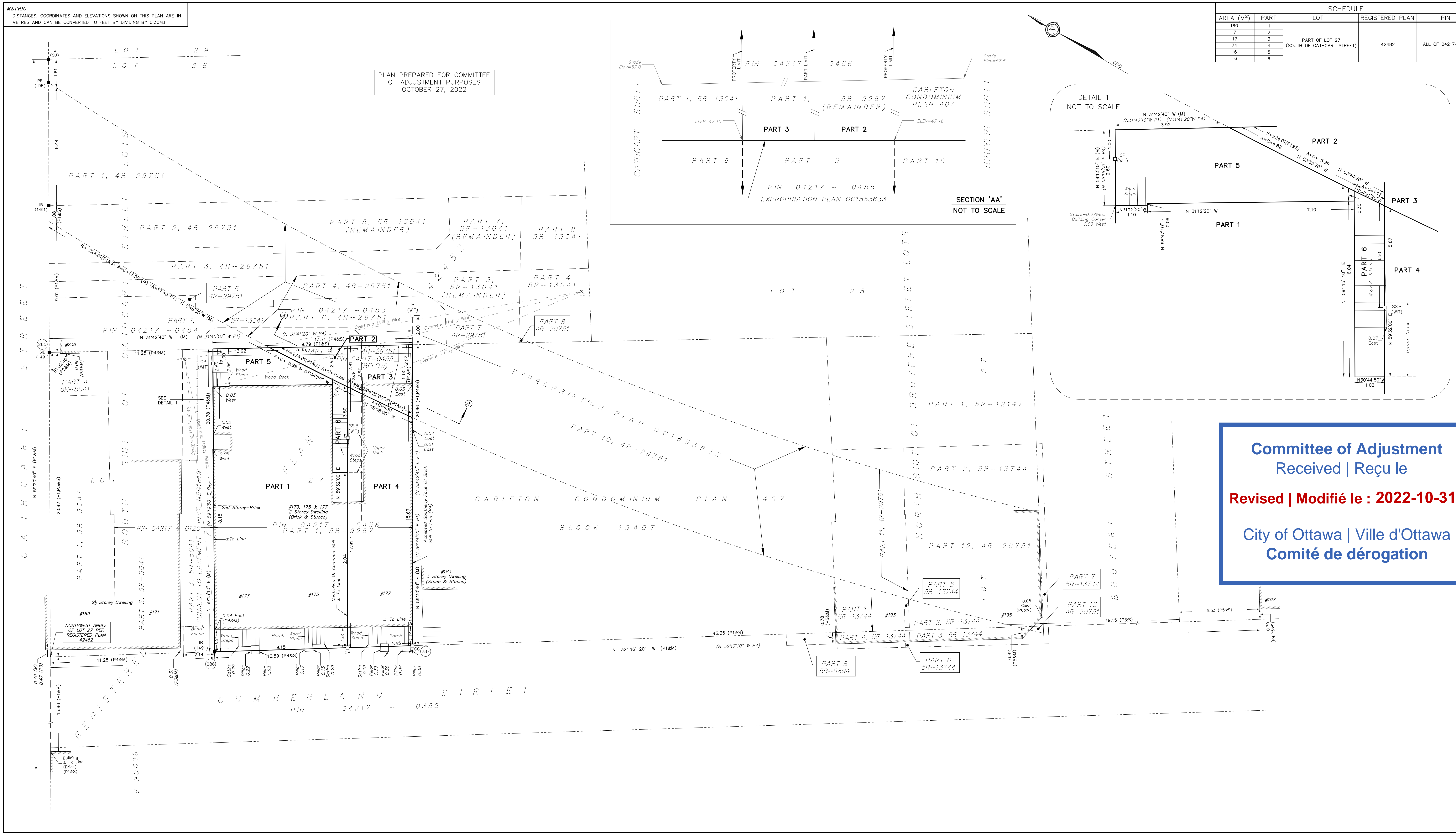
SURVEYOR'S CERTIFICATE

I CERTIFY THAT:

- THIS SURVEY AND PLAN ARE CORRECT AND IN ACCORDANCE WITH THE SURVEY ACT, THE SURVEYORS ACT, THE LAND TITLES ACT AND THE REGULATIONS MADE UNDER THEM.
- THE SURVEY WAS COMPLETED ON SEPTEMBER 09, 2022

DATE: _____
JOHN H. GUTRI
ONTARIO LAND SURVEYOR

Committee of Adjustment
Received | Reçu le
Revised | Modifié le : 2022-10-31
City of Ottawa | Ville d'Ottawa
Comité de dérogation



Fairhall Moffatt & Woodland
ONTARIO LAND SURVEYORS

213-42482
213-42482
213-42482

100-800 TERRY FOX DRIVE, CANATA, ONTARIO K2E 4B6
TEL: (613) 591-2550 FAX: (613) 591-1495
www.fmw.on.ca

JOB No. AC194000
E 367985, N 5033021
REFERENCE No. 213-42482
S:\1861\ACT\MAS\062022\022022
RP_AC194.dwg (54)