

● ADDITION T.O. 3RD PLATE
25' - 8 3/4"

● ADDITION T.O. 3RD SUBFLOOR
17' - 7 5/8"

● ADDITION T.O. 2ND PLATE
16' - 7"

● ADDITION T.O. 2ND SUBFLOOR
8' - 5 7/8"

● ADDITION T.O. GRD PLATE
7' - 5 1/4"

● ADDITION T.O. GRD SUBFLOOR
-7 7/8"

● ADDITION T.O. FOUNDATION
-1' - 10"

● ADDITION T.O. BASEMENT SLAB
-9' - 10"

● ADDITION B.O. FOUNDATION
-10' - 4"

8' - 1 1/8"

1' - 0 5/8"

8' - 1 1/8"

1' - 0 5/8"

8' - 1 1/8"

1' - 2 1/8"

8' - 1 1/8"

8' - 0"

8' - 0"

Committee of Adjustment
JUN 17 2022
City of Ottawa
U.S. SECOND CEILING
17' - 9 1/2"

● T.O. SECOND FLOOR
10' - 1"

● U.S. GROUND CEILING
9' - 1"

● T.O. GROUND FLOOR
0"

● U.S. GROUND JOISTS
-9"

● LOWER T.O. BASEMENT
-7' - 3"

1' - 0"

7' - 8 1/2"

9' - 1"

9' - 1"

9' - 0"

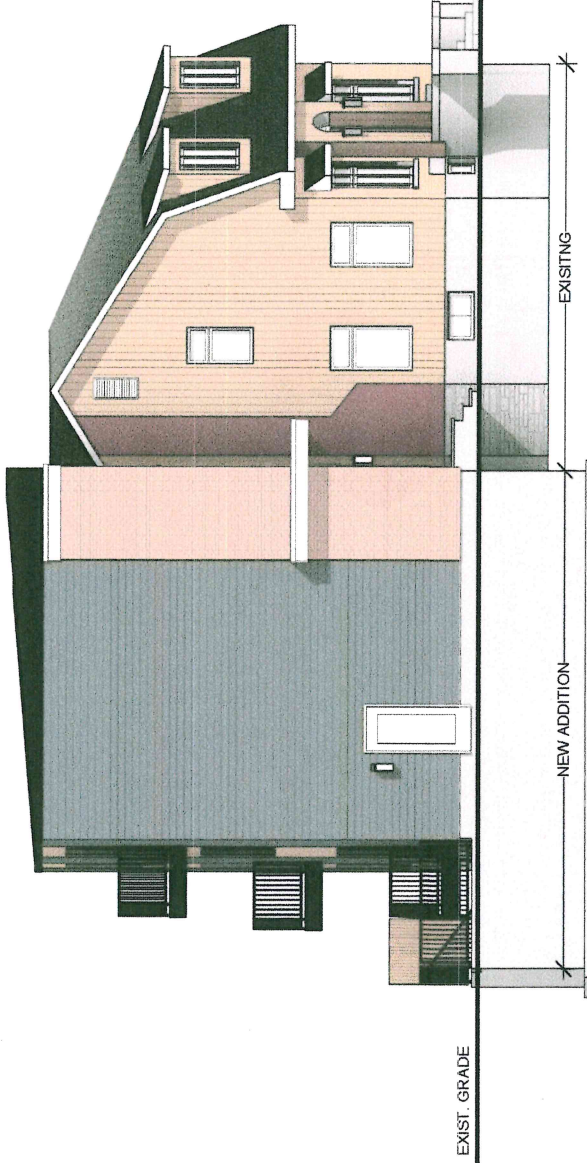
9' - 0"

9' - 0"

9' - 0"

1 NORTH ELEVATION
1/8" = 1'-0"

2 EAST ELEVATION
1/8" = 1'-0"



NEW ADDITION

EXISTING

EXIST. GRADE

All drawings, specifications, schedules, related documents and design are copyright property of the designer and shall not be used in whole or part without written permission of the designer.



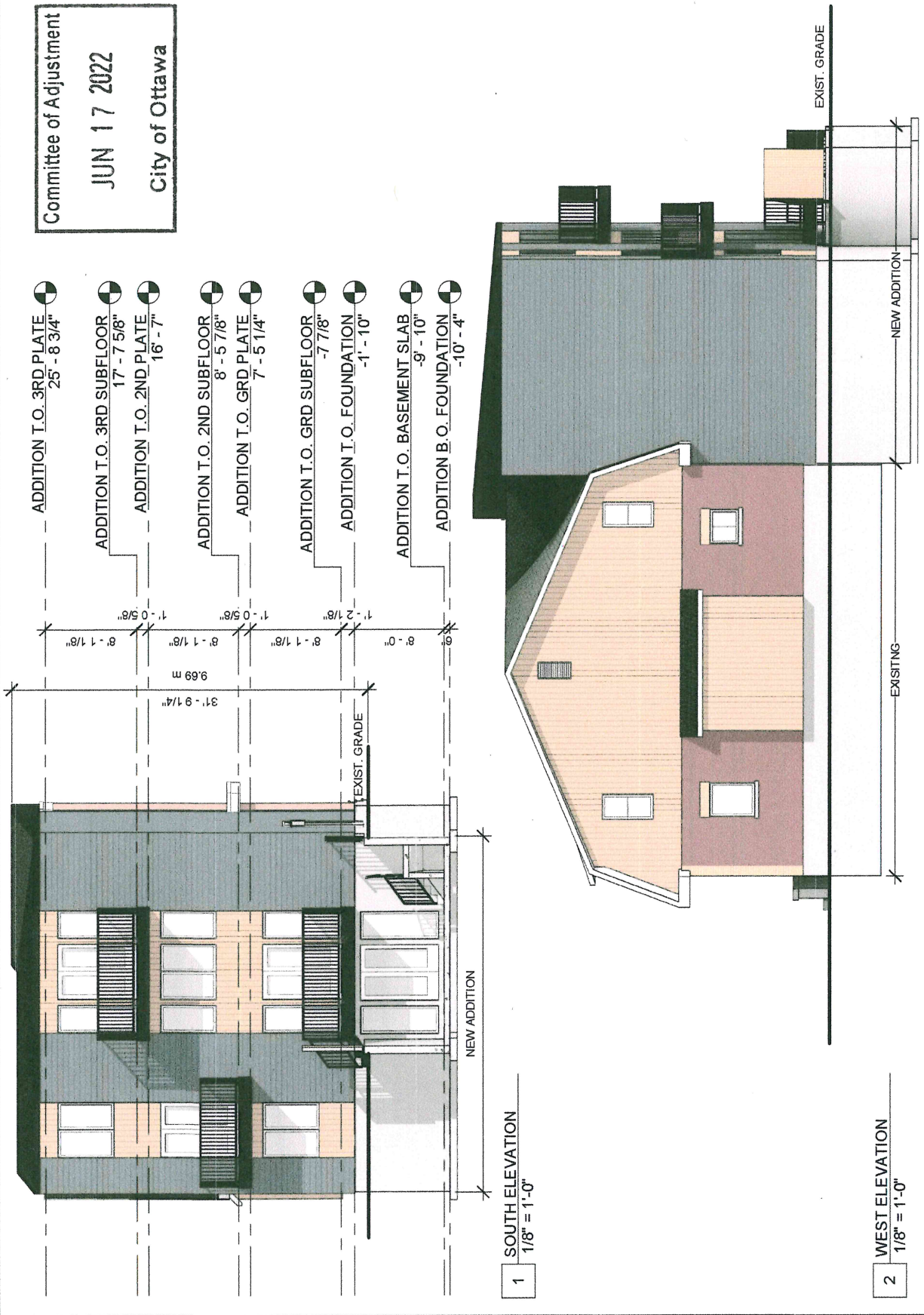
Committee of Adjustment
 JUN 17 2022
 City of Ottawa

MULTI-UNIT
 CONVERSION
 184 MERIER AVENUE
 VANIER, ON, K1L 6S9

PROJECT NAME: _____
 DATE: 02/22/22
 SCALE: 1/8" = 1'-0"
 DRAWING NO.: ELEVATIONS
 DESIGNED/DRAWN: BL & PV

All drawings, specifications, related documents and designs are copyright property of the designer and not to be used in whole or part without written permission of the designer.

A-3.1



1 SOUTH ELEVATION
 1/8" = 1'-0"

2 WEST ELEVATION
 1/8" = 1'-0"