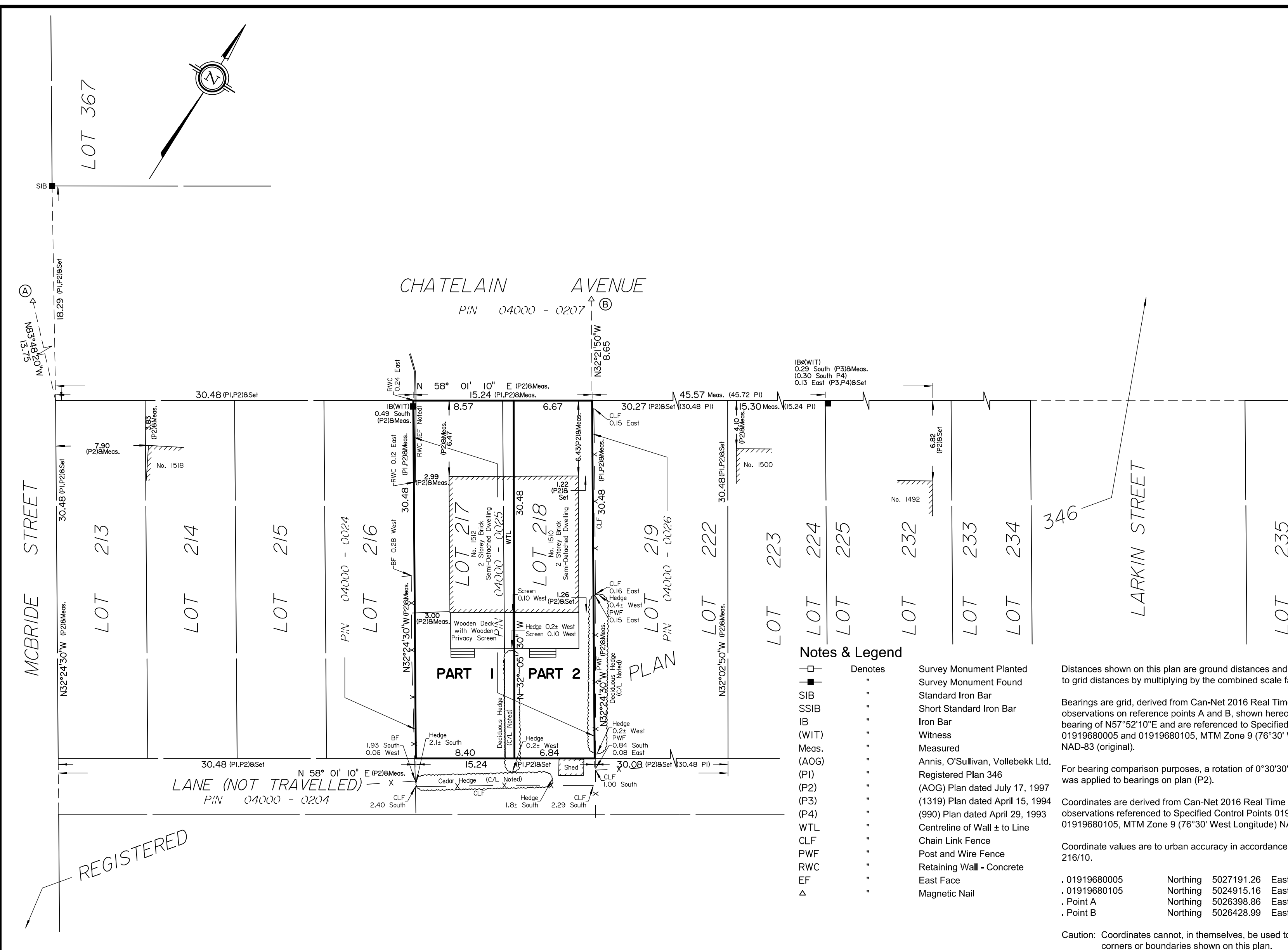


Committee of Adjustment  
Received | Reçu le  
2022-12-21  
City of Ottawa | Ville d'Ottawa  
Comité de dérogation



SCHEDULE				
AREA (Sq. m.)	PART	LOT	PLAN	PIN
258.6	1	217 and Part of 218	346	ALL OF 04000-0025
205.9	2	Part of 218		

PLAN OF SURVEY OF  
**LOT 217 AND 218**  
**REGISTERED PLAN 346**  
**CITY OF OTTAWA**  
Surveyed by Annis, O'Sullivan, Vollebekk Ltd.

Scale 1 : 250  
10 7.5 5.0 2.5 0 5 10 Metres

The intended plot size of the plan is 610 mm in width by 356 mm in height when plotted at a scale of 1:250.

Metric  
DISTANCES AND COORDINATES SHOWN ON THIS PLAN ARE IN METRES AND CAN BE CONVERTED TO FEET BY DIVIDING BY 0.3048.

Notes & Legend

- Denotes Survey Monument Planted
- Denotes Survey Monument Found
- SIB Standard Iron Bar
- SSIB Short Standard Iron Bar
- IB Iron Bar
- (WIT) Witness
- Meas. Measured
- (AOG) Annis, O'Sullivan, Vollebekk Ltd. Registered Plan 346
- (P2) (1319) Plan dated July 17, 1997
- (P3) (1319) Plan dated April 15, 1994
- (P4) (990) Plan dated April 29, 1993
- WTL Centreline of Wall ± to Line
- CLF Chain Link Fence
- PWF Post and Wire Fence
- RWC Retaining Wall - Concrete
- EF East Face
- △ Magnetic Nail

Distances shown on this plan are ground distances and can be converted to grid distances by multiplying by the combined scale factor of 0.99994.

Bearings are grid, derived from Can-Net 2016 Real Time Network GPS observations on reference points A and B, shown hereon, having a bearing of N57°52'10"E and are referenced to Specified Control Points 01919680005 and 01919680105, MTM Zone 9 (76°30' West Longitude) NAD-83 (original).

For bearing comparison purposes, a rotation of 0°30'30" counter-clockwise was applied to bearings on plan (P2).

Coordinates are derived from Can-Net 2016 Real Time Network GPS observations referenced to Specified Control Points 01919680005 and 01919680105, MTM Zone 9 (76°30' West Longitude) NAD-83 (original).

Coordinate values are to urban accuracy in accordance with O. Reg. 216/10.

.01919680005	Northing	5027191.26	Easting	361496.76
.01919680105	Northing	5024915.16	Easting	373971.65
.Point A	Northing	5026398.86	Easting	364251.68
.Point B	Northing	5026428.99	Easting	364299.50

Caution: Coordinates cannot, in themselves, be used to re-establish corners or boundaries shown on this plan.

Surveyor's Certificate

I CERTIFY THAT :  
1. This survey and plan are correct and in accordance with the Surveys Act, the Surveyors Act and the Land Titles Act and the regulations made under them.  
2. The survey was completed on the \_\_ day of \_\_\_\_\_, 2022.

Date \_\_\_\_\_  
V. Andrew Shelp  
Ontario Land Surveyor

This plan of survey relates to AOLS Plan Submission Form Number V-36382

**ANNIS, O'SULLIVAN, VOLLEBEKK LTD.**  
14 Concourse Gate, Suite 500  
Nepean, Ont. K2E 7S6  
Phone: (613) 727-0850 / Fax: (613) 727-1079  
Email: Nepean@aovltd.com

Ontario Land Surveyors Job No. 23178-22 Mulcohey Lts217218 PL346 R DI ISW

REGISTERED