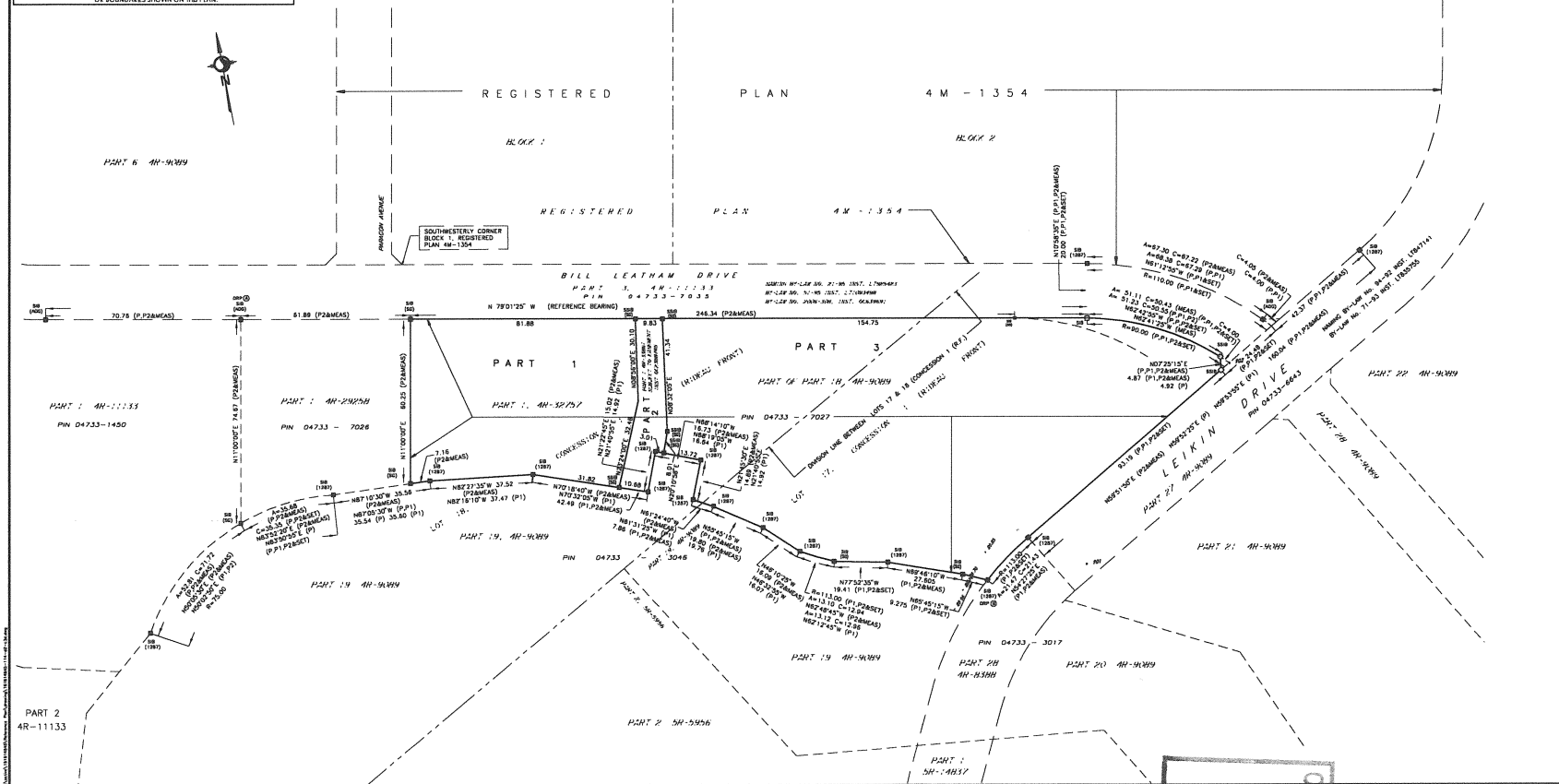


OBSERVED REFERENCE POINTS DERIVED FROM GPS OBSERVATIONS USING THE CAN-NET VIRTUAL REFERENCE STATION NETWORK: MINIMUM 9 HOURS (ORDINATE) COORDINATES TO UTM ACCURACY PER SEC 14(2) OF O. REG. 216(10)		
DEP ID	NORTHING	EASTING
0	5075389.97	346538.72
0	5075389.97	346538.74
COORDINATES CANNOT, IN THEMSELVES, BE USED TO RE-ESTABLISH CORNERS OR BOUNDARIES SHOWN ON THE PLAN.		

SCHEDULE				
PART	LOT	CONCESSION	PIN	AREA
1	PART OF 18		ALL OF 04733-7027	4271.87m ²
2	PART OF 18	1 (RIDEAU FRONT) (NEPEAN)	ALL OF 04733-7027	474.3m ²
3	PART OF 17 & 18		ALL OF 04733-7027	14133.3m ²

PART 3 IS APPROXIMATE ALL OF PIN 04733-7027
PART 2 IS SUBJECT TO PARTIAL EASEMENT OCCURRING



DRAFT PLAN OF SURVEY OF
PART OF LOTS 17 AND 18
CONCESSION 1 (RIDEAU FRONT)
 (GEOGRAPHIC TOWNSHIP OF NEPEAN)
CITY OF OTTAWA

Scale 1:750
 THE ENLARGED PLOT SIZE OF THIS PLAN IS 4mm IN WIDTH BY 497mm IN HEIGHT WHEN PLOTTED AT A SCALE OF 1:750.

METRIC CONVERSION
 DISTANCES AND COORDINATES SHOWN ON THIS PLAN ARE IN METERS AND CAN BE CONVERTED TO FEET BY DIVIDING BY 0.3048.

GRID SCALE CONVERSION
 DISTANCES ARE GROUND AND CAN BE CONVERTED TO GRID BY MULTIPLYING BY THE CORRECTIONAL FACTOR 0.99995.

BEARING NOTE
 BEARINGS ARE GEODESIC AND ARE REFERRED TO THE SOUTHERLY BEARING OF BILL LEATHAM DRIVE AS SHOWN ON PLAN 4M-1354 HAVING A BEARING OF N79°25' IN.

LEGEND

■	DENDRUS	□	ROUND AND SQUARES
□	SET BACKS	○	SET BACKS
■	IRON BAR	□	ROUND IRON BAR
■	ROUND IRON BAR	□	STANDARD IRON BAR
■	SHORT ENLARGED IRON BAR	□	C/C CROSS
■	COILS/PIN	□	PLAN ARROW
■	W/	□	PROPERTY IDENTIFICATION NUMBER
■	W/	□	RESERVED
■	W/	□	PROPOSED
■	W/	□	CONCURRENCE
■	W/	□	STANTEC GEOMATICS LTD.
■	W/	□	ANNEX GEORGIAN VILLAGE LTD.
■	W/	□	FARLEY, SAFFRA & SURETY LTD.
■	W/	□	PLAN ARROW
■	W/	□	PLAN ARROW
■	W/	□	OBSERVED REFERENCE POINT

SURVEYOR'S CERTIFICATE
 I CERTIFY THAT:
 1. THIS SURVEY AND PLAN ARE CORRECT AND IN ACCORDANCE WITH THE SURVEY ACT, THE SURVEYORS ACT AND THE LAND TITLES ACT AND THE REGULATIONS MADE UNDER THEM.
 2. THIS SURVEY WAS COMPLETED ON THE DATE OF 2023.

DATE: _____
 THE PLAN OF SURVEY RELATES TO ADS PLAN SUBMISSION NUMBER 4444444.

STANTEC
Stantec Geomatics Ltd.
 CANADIAN LAND SURVEYORS
 OTTAWA LAND SURVEYORS
 330 COLLEGE AVENUE, SUITE 400
 OTTAWA, ONTARIO, CANADA K1L 8Y1
 TEL: 416 291 4400
 PROJECT NO.: 201904640114

Committee of Adjustment
JAN 04 2023
City of Ottawa