

4 November 2022 9:28 AM

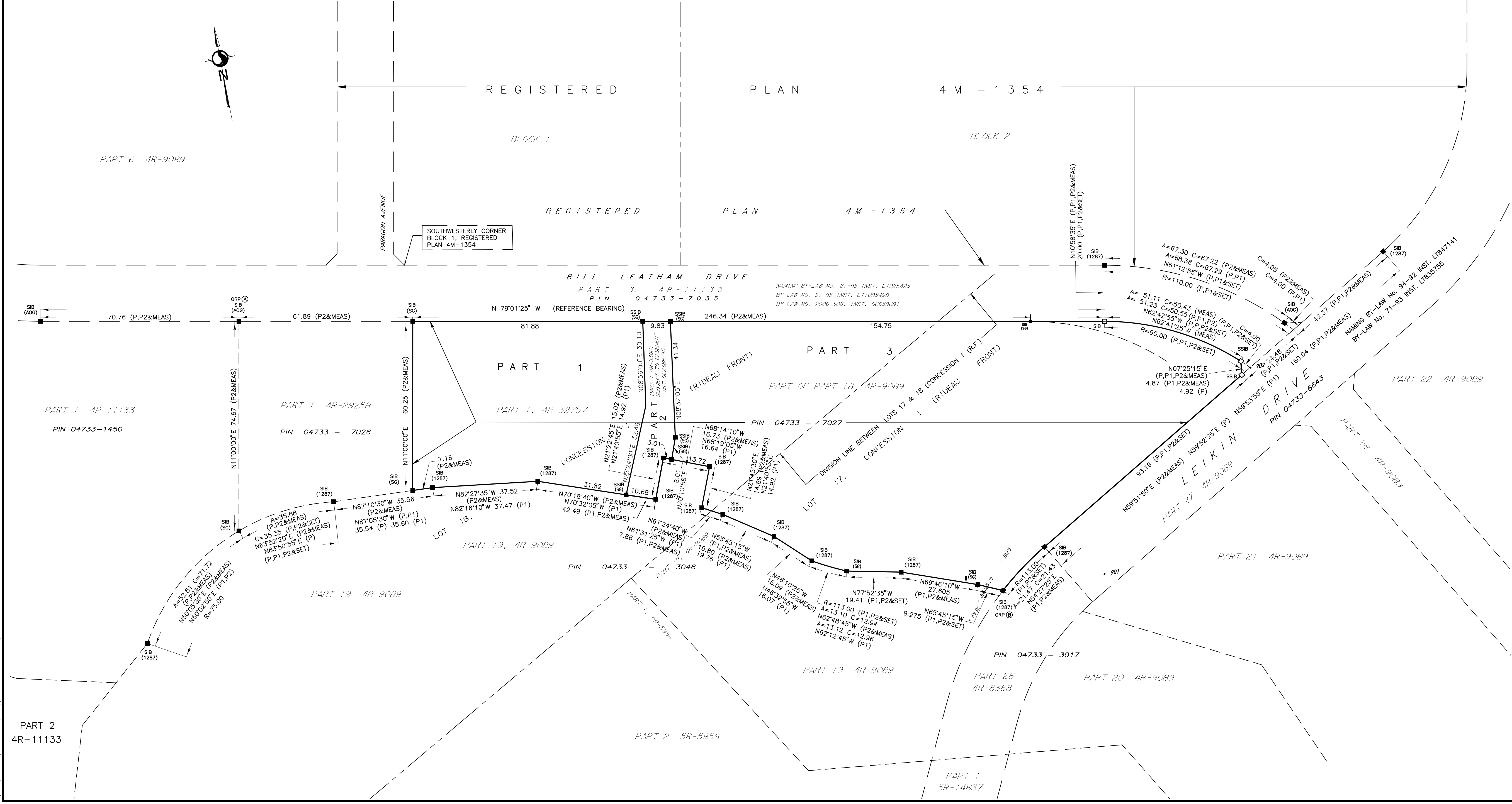
OBSERVED REFERENCE POINTS DERIVED FROM GPS OBSERVATIONS USING THE CAN-NET VIRTUAL REFERENCE STATION NETWORK:
 MTM ZONE 9, NAD83 (ORIGINAL).
 COORDINATES TO URBAN ACCURACY PER SEC. 14(2) OF O.REG. 216/10

| ORP ID | NORTHING | EASTING |
|--------|------------|-----------|
| (A) | 5017530.97 | 366558.72 |
| (B) | 5017385.00 | 366807.54 |

COORDINATES CANNOT, IN THEMSELVES, BE USED TO RE-ESTABLISH CORNERS OR BOUNDARIES SHOWN ON THIS PLAN.

| SCHEDULE | | | | |
|----------|-----------------|---------------------------|---------------------|-----------------------|
| PART | LOT | CONCESSION | PIN | AREA |
| 1 | PART OF 18 | 1 (RIDEAU FRONT) (NEPEAN) | ALL OF 04733 - 7027 | 4771.83m ² |
| 2 | PART OF 18 | | | 674.3m ² |
| 3 | PART OF 17 & 18 | | | 14135.3m ² |

PART 1-3 COMPROMISE ALL OF PIN 04733-7027
 PART 2 IS SUBJECT TO EASEMENT INST. OC2388745



DRAFT PLAN OF SURVEY OF
PART OF LOTS 17 AND 18
CONCESSION 1 (RIDEAU FRONT)
 (GEOGRAPHIC TOWNSHIP OF NEPEAN)
 CITY OF OTTAWA

Scale 1:750
 20 0 20 40 METRES

Stantec Geomatics Ltd.
 THE INTENDED PLOT SIZE OF THIS PLAN IS 914mm IN WIDTH BY 457mm IN HEIGHT WHEN PLOTTED AT A SCALE OF 1:750.

METRIC CONVERSION
 DISTANCES AND COORDINATES SHOWN ON THIS PLAN ARE IN METRES AND CAN BE CONVERTED TO FEET BY DIVIDING BY 0.3048.

GRID SCALE CONVERSION
 DISTANCES ARE GROUND AND CAN BE CONVERTED TO GRID BY MULTIPLYING BY THE COMBINED SCALE FACTOR OF 0.99993.

BEARING NOTE
 BEARINGS ARE ASTRONOMIC AND ARE REFERRED TO THE SOUTHERLY LIMIT OF BILL LEATHAM DRIVE AS SHOWN ON PLAN 4R-11133, HAVING A BEARING OF N 79°01'25" W.

LEGEND

| SYMBOL | DENOTES | FOUND MONUMENTS |
|--------|-----------------------------------|-----------------|
| ■ | SET MONUMENTS | |
| □ | IRON BAR | |
| IB | ROUND IRON BAR | |
| IBO | SHORT STANDARD IRON BAR | |
| SIB | CUT CROSS | |
| SSIB | CONCRETE PIN | |
| CC | NAIL & WASHER | |
| CP | WITNESS | |
| NW | PROPERTY IDENTIFICATION NUMBER | |
| WIT | MEASURED | |
| PIN | PROPORTIONED | |
| MEAS | ORIGIN UNKNOWN | |
| PROP | STANTEC GEOMATICS LTD. | |
| OU | ANNIS, O'SULLIVAN, VOLLEBEKK LTD. | |
| SG | FARLEY, SMITH & MURRAY LTD. | |
| AGG | PLAN 4R-11133 | |
| 1287 | PLAN 4R-9089 | |
| P | PLAN 4R-9089 | |
| P1 | PLAN 4R-29258 | |
| P2 | PLAN 4R-29258 | |
| ORP | OBSERVED REFERENCE POINT | |

SURVEYOR'S CERTIFICATE
 I CERTIFY THAT:
 1. THIS SURVEY AND PLAN ARE CORRECT AND IN ACCORDANCE WITH THE SURVEYS ACT, THE SURVEYORS ACT AND THE LAND TITLES ACT AND THE REGULATIONS MADE UNDER THEM.
 2. THE SURVEY WAS COMPLETED ON THE DAY OF , 2022.

DATE _____ AMANDA BULLIA
 ONTARIO LAND SURVEYOR

THIS PLAN OF SURVEY RELATES TO AOLS PLAN SUBMISSION FORM NUMBER #####.

Stantec Geomatics Ltd.
 CANADA LANDS SURVEYORS
 ONTARIO LAND SURVEYORS
 1331 CLYDE AVENUE, SUITE 400
 OTTAWA, ONTARIO, K2C 3G4
 TEL: 613.722.4420
 stantec.com

DRAWN: TMT CHECKED: AB PM: AB FIELD: * PROJECT No.: 161614645-114