

METRIC
DISTANCES AND COORDINATES SHOWN ON THIS PLAN ARE IN METRES
AND CAN BE CONVERTED TO FEET BY DIVIDING BY 0.3048

**PLAN PREPARED FOR COMMITTEE OF
ADJUSTMENT PURPOSES SEP 26, 2022**

SCHEDULE			
PART	LOT	REG'D PLAN	PIN
1	ALL OF 25	444	PART OF 04712-0044
2	PART OF 24		PART OF 04712-0044
3	PART OF 24		PART OF 04712-0044

PARTS 1, 2 AND 3 COMPRISE ALL OF PIN 04712-0044

I REQUIRE THIS PLAN TO BE
DEPOSITED UNDER THE
LAND TITLES ACT.

DATE _____

PLAN 4R-
RECEIVED AND DEPOSITED

DATE _____

REPRESENTATIVE FOR
LAND REGISTRAR FOR THE
LAND TITLES DIVISION OF
OTTAWA - CARLETON (N° 4)

OTTAWA RIVER
PIN 04712 -- 0517

**PLAN OF SURVEY OF
LOTS 24 AND 25
REGISTERED PLAN 444
CITY OF OTTAWA**

SCALE 1 : 250
0 5 10 20 25 metres
FAIRHALL, MOFFATT & WOODLAND LIMITED
ONTARIO LAND SURVEYORS

- NOTES**
- BEARINGS HEREON ARE ASTRONOMIC AND ARE REFERRED TO THE NORTHERLY LIMIT OF GRANDVIEW ROAD AS SHOWN ON PLAN 444, HAVING A BEARING OF N89°37'00"E.
 - BEARINGS CAN BE CONVERTED TO GRID BY APPLYING AN ANGLE ROTATION TO 00°11'20" CLOCKWISE.
 - DISTANCES ARE GROUND AND CAN BE CONVERTED TO GRID BY MULTIPLYING BY THE COMBINED SCALE FACTOR 0.999927.

- LEGEND**
- - SURVEY MONUMENT FOUND
 - - SURVEY MONUMENT SET
 - IB - IRON BAR
 - (P) - PLAN 4R-14088
 - (P1) - REGISTERED PLAN 444
 - (S) - SET
 - (M) - MEASURED
 - (857) - FAIRHALL, MOFFATT & WOODLAND LIMITED O.L.S.
 - (647) - H.R. FARLEY O.L.S.
 - (1287) - FARLEY, SMITH & MURRAY SURVEYING LTD
 - (SU) - SOURCE UNKNOWN
 - PIN - PROPERTY IDENTIFIER NUMBER
 - WIT - WITNESS

COORDINATES WERE DERIVED FROM REAL TIME NETWORK OBSERVATIONS (SMARTNET) MTM ZONE 9, NAD83 ORIGINAL.

COORDINATES HAVE BEEN DETERMINED TO AN URBAN ACCURACY IN ACCORDANCE WITH SECTION 14(2) OF O.REG 216/10.

POINT ID	NORTHING	EASTING
1300	5024789.802	355324.695
1302	5024789.639	355277.409

COORDINATES CANNOT IN THEMSELVES BE USED TO RE-ESTABLISH CORNERS OR BOUNDARIES SHOWN ON THIS PLAN.

SURVEYOR'S CERTIFICATE

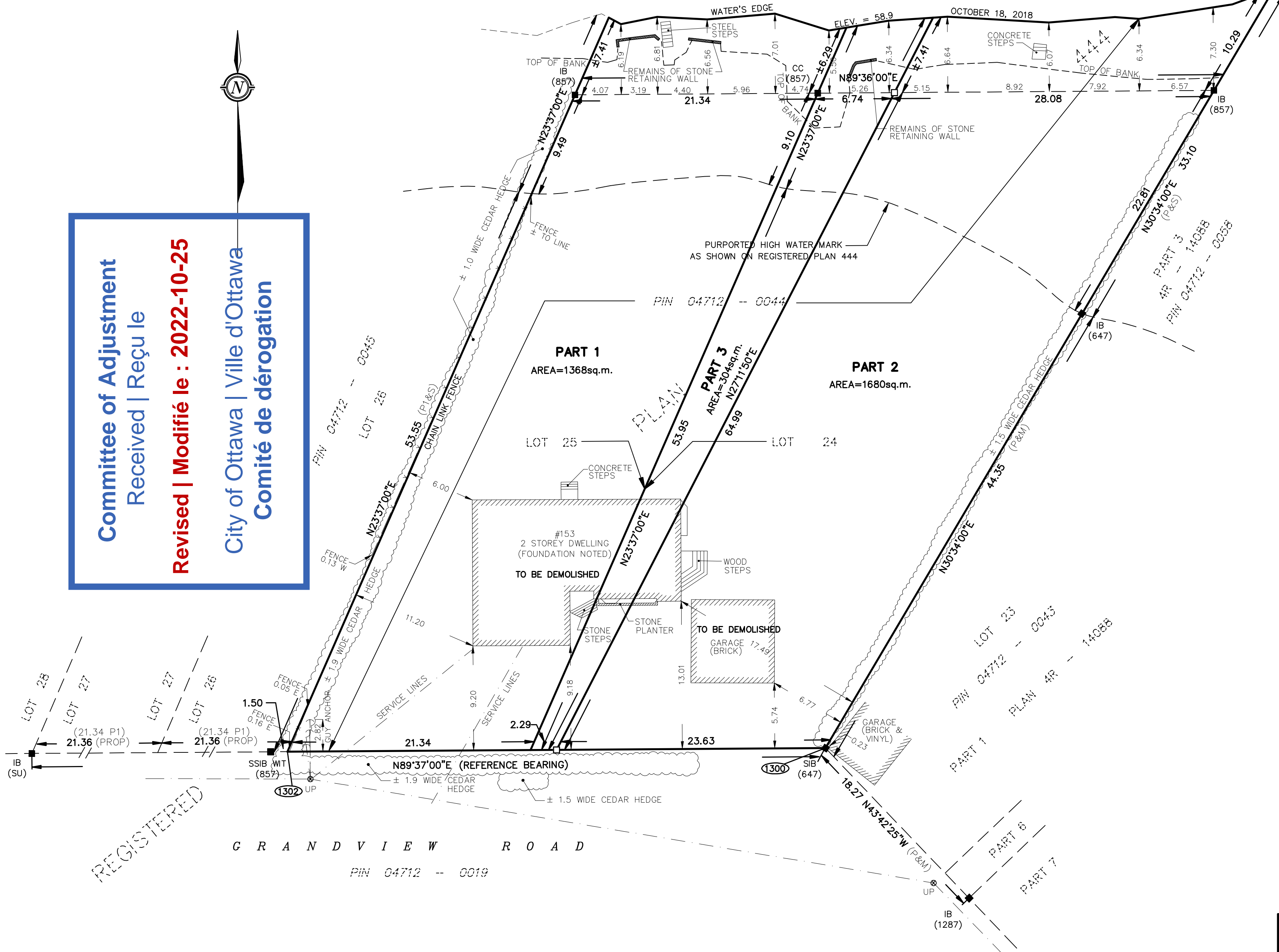
I CERTIFY THAT:

- THIS SURVEY AND PLAN ARE CORRECT AND IN ACCORDANCE WITH THE SURVEYS ACT, THE SURVEYORS ACT, THE LAND TITLES ACT AND THE REGULATIONS MADE UNDER THEM.
- THE SURVEY WAS COMPLETED ON ?????, 2021.

DATE _____ JOHN H. GUTRI
ONTARIO LAND SURVEYOR

Fairhall Moffatt & Woodland LIMITED ONTARIO LAND SURVEYORS <i>Surveying and Land Information Services</i> 100-600 TERRY FOX DRIVE, KANATA, ONTARIO K2L 4B6 TEL: (613) 591-2580 FAX: (613) 591-1495 www.fmw.on.ca	JOB No. 227900
	E 355314, N 5024815
	REFERENCE No. 71(a) - 444 NEPEAN
	S:\JOBS\134000\DWG 2022-09-15 2279_draft-rp_v3.dwg (KG)

**Committee of Adjustment
Received | Reçu le**
Revised | Modifié le : 2022-10-25
City of Ottawa | Ville d'Ottawa
Comité de dérogation



REGISTERED

GRANDVIEW ROAD
PIN 04712 -- 0019

METRIC
 DISTANCES AND COORDINATES SHOWN ON THIS PLAN ARE IN METRES
 AND CAN BE CONVERTED TO FEET BY DIVIDING BY 0.3048

TOPOGRAPHIC SURVEY OF
 LOTS 24 AND 25
 REGISTERED PLAN 444
 CITY OF OTTAWA

SCALE 1 : 250
 0 5 10 20 25 metres

FAIRHALL, MOFFATT & WOODLAND LIMITED
 ONTARIO LAND SURVEYORS

NOTES

- BEARINGS HEREON ARE ASTRONOMIC AND ARE REFERRED TO THE NORTHERLY LIMIT OF GRANDVIEW ROAD AS SHOWN ON PLAN 444, HAVING A BEARING OF N89°37'00"E.
- BEARINGS CAN BE CONVERTED TO GRID BY APPLYING AN ANGLE ROTATION TO 00°11'20" CLOCKWISE.
- DISTANCES ARE GROUND AND CAN BE CONVERTED TO GRID BY MULTIPLYING BY THE COMBINED SCALE FACTOR 0.999927.

LEGEND

- - SURVEY MONUMENT FOUND
- - SURVEY MONUMENT SET
- IB - IRON BAR
- (P) - PLAN 4R-14088
- (P1) - REGISTERED PLAN 444
- (S) - SET
- (M) - MEASURED
- (857) - FAIRHALL, MOFFATT & WOODLAND LIMITED O.L.S.
- (647) - H.R. FARLEY O.L.S.
- (1287) - FARLEY, SMITH & MURRAY SURVEYING LTD
- (SU) - SOURCE UNKNOWN
- PIN - PROPERTY IDENTIFIER NUMBER
- ☼ - CONIFEROUS TREE
- ☼ - DECIDUOUS TREE
- ∅ - DIAMETER
- ⊙UP - UTILITY POLE

COORDINATES WERE DERIVED FROM REAL TIME NETWORK OBSERVATIONS (SMARTNET) MTM ZONE 9, NAD83 ORIGINAL.

COORDINATES HAVE BEEN DETERMINED TO AN URBAN ACCURACY IN ACCORDANCE WITH SECTION 14(2) OF O.REG 216/10.

POINT ID	NORTHING	EASTING
1300	5024789.802	355324.695
1302	5024789.639	355277.409


COORDINATES CANNOT IN THEMSELVES BE USED TO RE-ESTABLISH CORNERS OR BOUNDARIES SHOWN ON THIS PLAN.

SURVEYOR'S CERTIFICATE

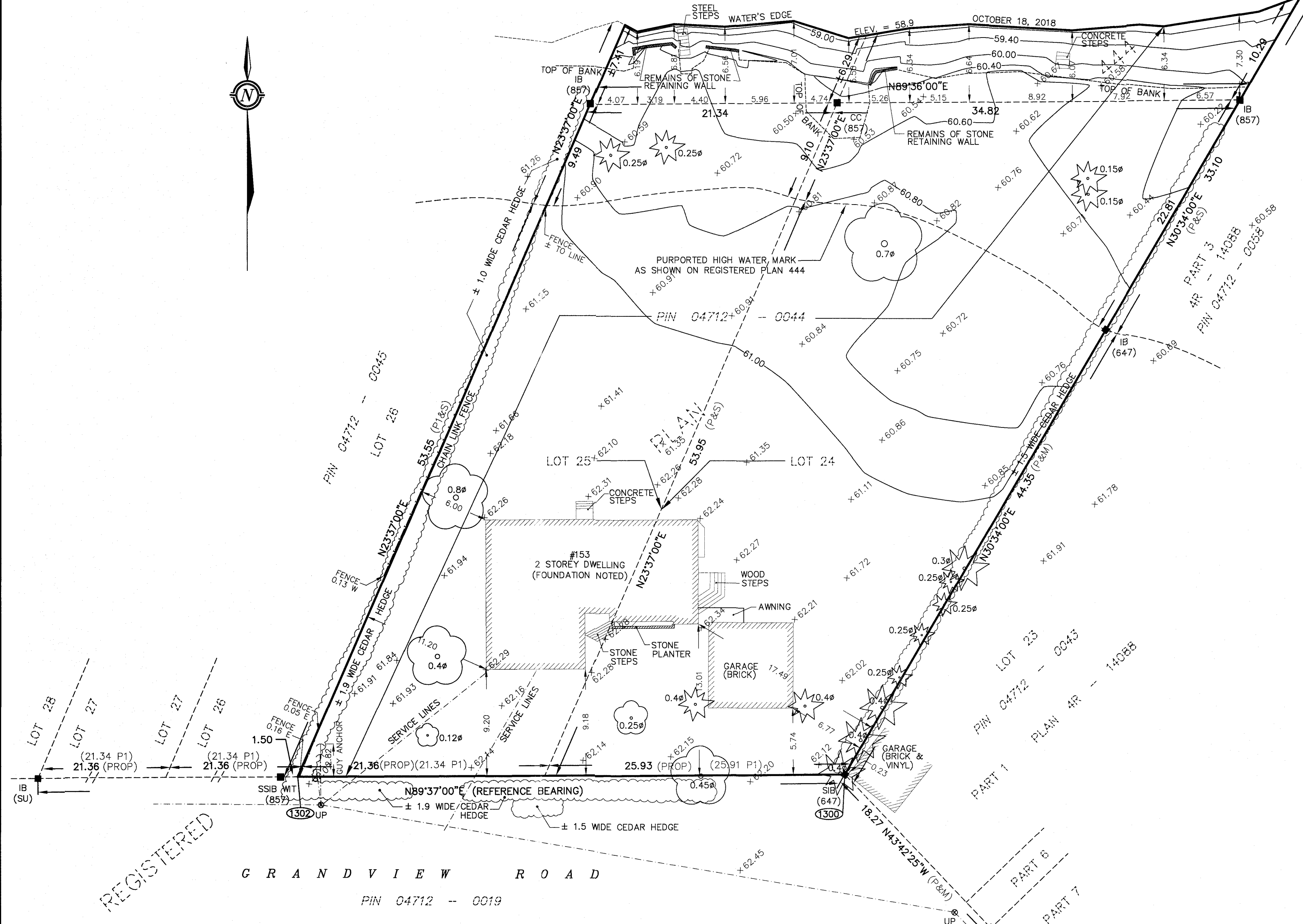
I CERTIFY THAT:
 1. THIS SURVEY AND PLAN ARE CORRECT AND IN ACCORDANCE WITH THE SURVEYS ACT, THE SURVEYORS ACT, THE LAND TITLES ACT AND THE REGULATIONS MADE UNDER THEM.
 2. THE SURVEY WAS COMPLETED ON DEC. 15, 2021.

20210317
 DATE

JOHN H. GUTRI
 ONTARIO LAND SURVEYOR

Fairhall Moffatt & Woodland LIMITED ONTARIO LAND SURVEYORS <i>Surveying and Land Information Services</i> 100-600 TERRY FOX DRIVE, KANATA, ONTARIO K2L 4B6 TEL: (613) 591-2580 FAX: (613) 591-1485 www.fmw.on.ca		JOB No. 227900
		E 355314, N 5024815
		REFERENCE No. 71(a) - 444 NEPEAN
		S:\JOBS\227900\DWG 2022-02-28 z279_topo.dwg (KG)

© COPYRIGHT 2022. REPRODUCTION, ALTERATION OR DISTRIBUTION OF THIS PLAN WITHOUT THE WRITTEN CONSENT OF FAIRHALL, MOFFATT & WOODLAND LIMITED IS PROHIBITED.



REGISTERED

GRANDVIEW ROAD
 PIN 04712 -- 0019

OTTAWA RIVER
 PIN 04712 -- 0517