

Committee of Adjustment
 Received | Reçu le
 2022-12-13
 City of Ottawa | Ville d'Ottawa
 Comité de dérogation

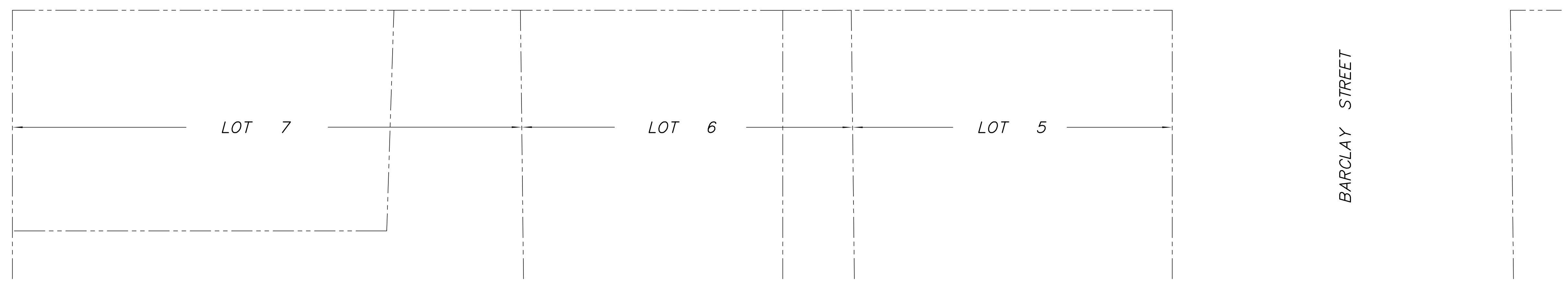
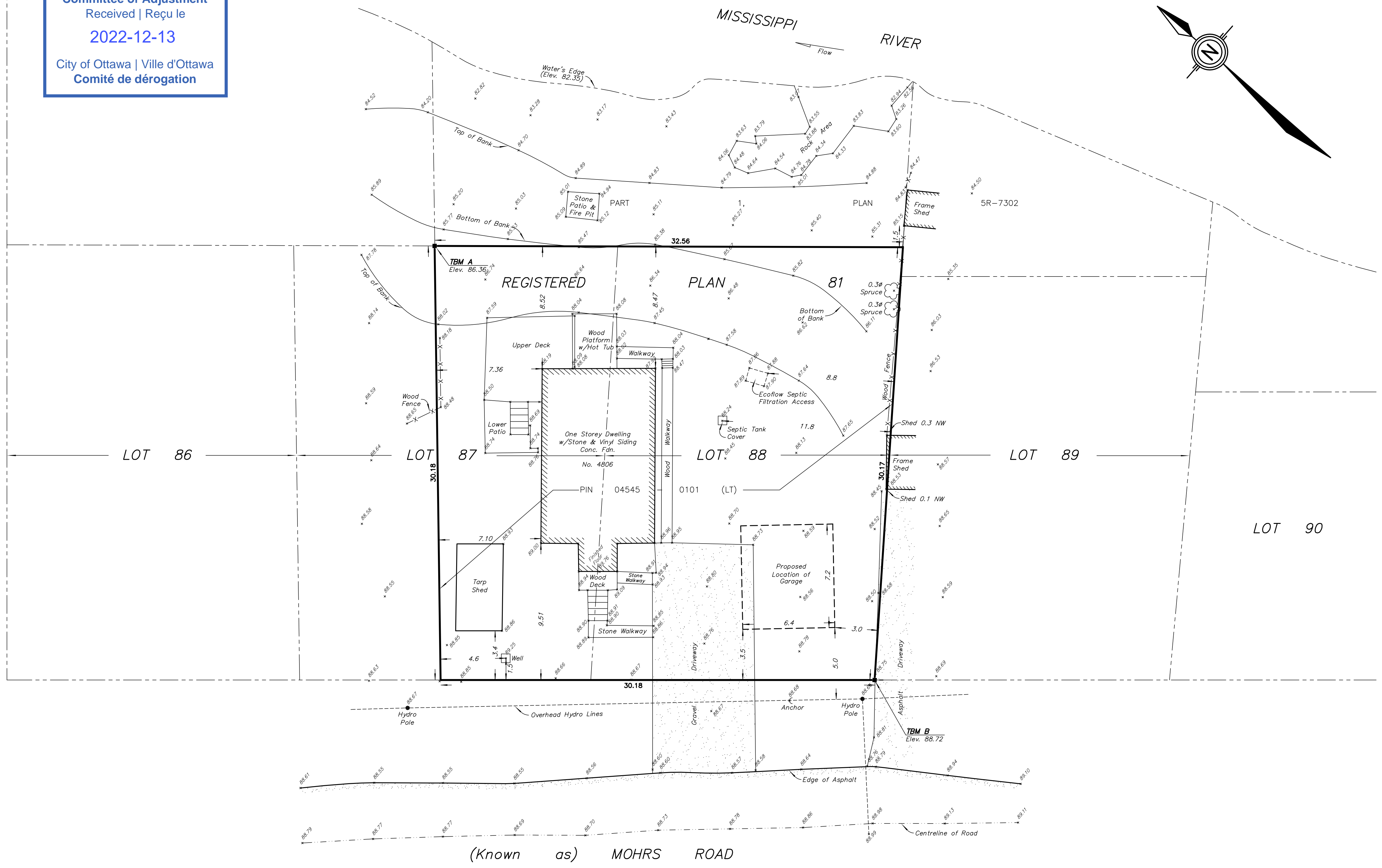
TOPOGRAPHIC SKETCH
 ILLUSTRATING ELEVATIONS
4806 MOHRS ROAD
 GEOGRAPHIC TOWNSHIP OF FITZROY
 CITY OF OTTAWA
 SCALE 1 : 150

METRIC NOTE:
 DISTANCES AND COORDINATES SHOWN ON THIS PLAN ARE IN METRES
 AND CAN BE CONVERTED TO FEET BY DIVIDING BY 0.3048.

ELEVATION NOTE:
 ELEVATIONS SHOWN ON THIS PLAN ARE OF GEODETIC ORIGIN AND
 ARE REFERRED TO BM 00119773027 GEODETIC SURVEY OF CANADA,
 HAVING A PUBLISHED ELEVATION OF 89.31.

BENCHMARK TABLE				
TEMPORARY BENCHMARK (TBM)	NORTHING	EASTING	ELEVATION	DESCRIPTION
TBM A	5030935.04	401822.28	86.36	IRON BAR
TBM B	5030892.15	401819.68	88.72	IRON BAR

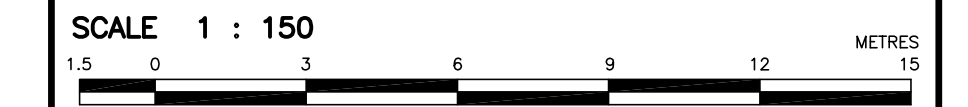
GALETTA SIDE ROAD



AK ADAM KASPRZAK SURVEYING LTD.
 ONTARIO LAND SURVEYORS
 29 BRIDGE ST., P.O. BOX 633
 RENFREW ONTARIO K7V 4E7
 PHONE (613) 432-3048

SCALE: 1 : 150 REF: 22-2121 C
 FILE No :

TOPOGRAPHIC SKETCH
 ILLUSTRATING ELEVATIONS
4806 MOHRS ROAD
 GEOGRAPHIC TOWNSHIP OF FITZROY
 CITY OF OTTAWA

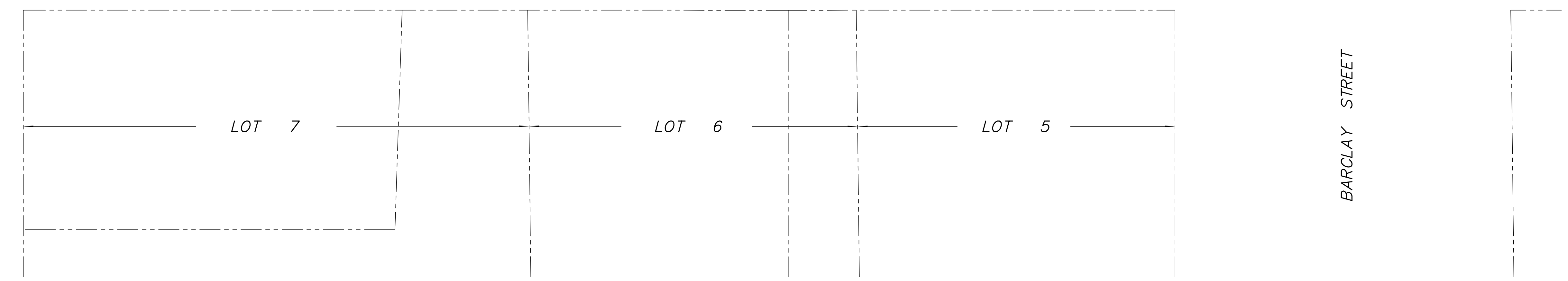
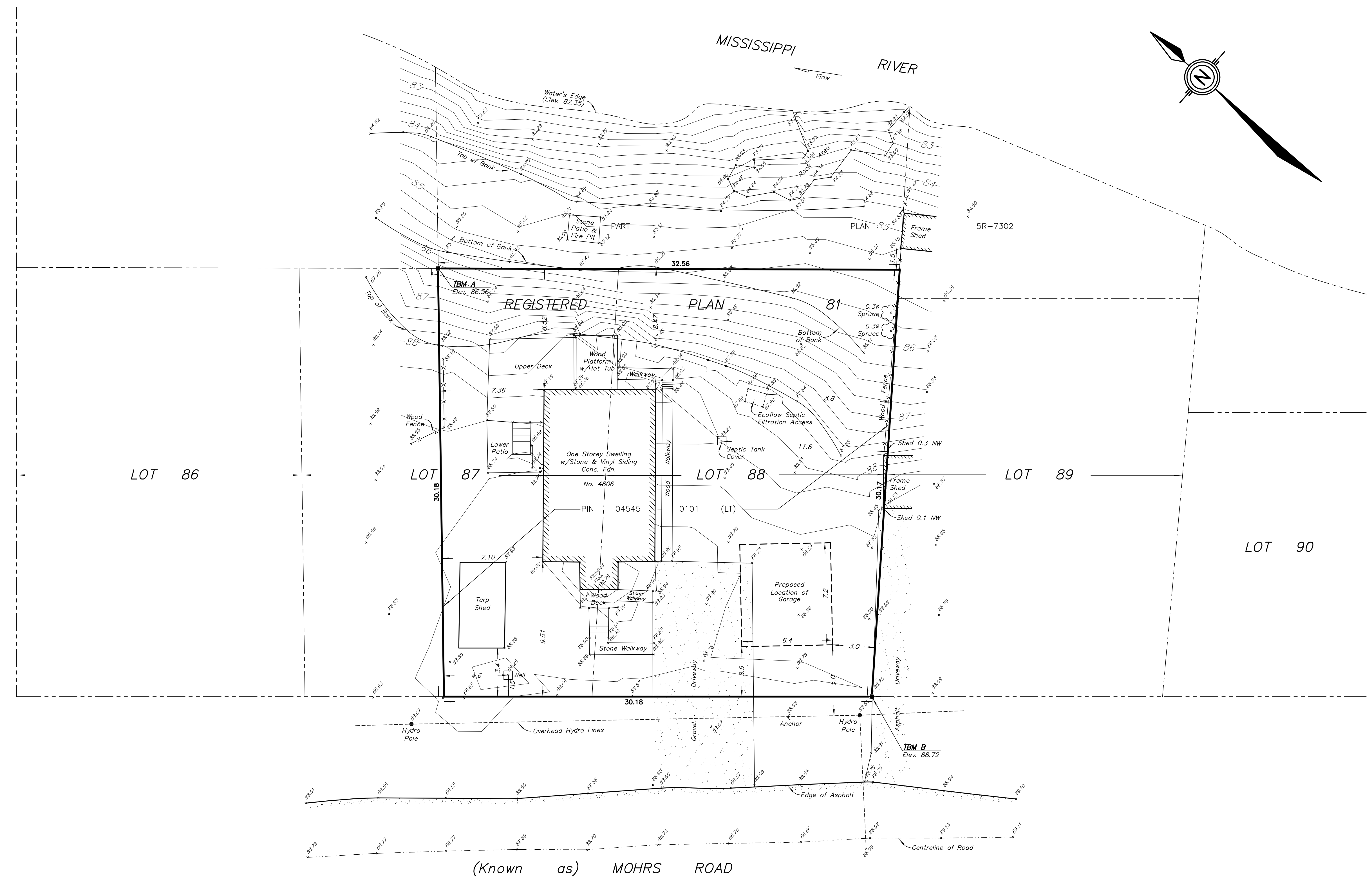


METRIC NOTE:
 DISTANCES AND COORDINATES SHOWN ON THIS PLAN ARE IN METRES
 AND CAN BE CONVERTED TO FEET BY DIVIDING BY 0.3048.

ELEVATION NOTE:
 ELEVATIONS SHOWN ON THIS PLAN ARE OF GEODETIC ORIGIN AND
 ARE REFERRED TO BM 00119773027 GEODETIC SURVEY OF CANADA,
 HAVING A PUBLISHED ELEVATION OF 89.31.

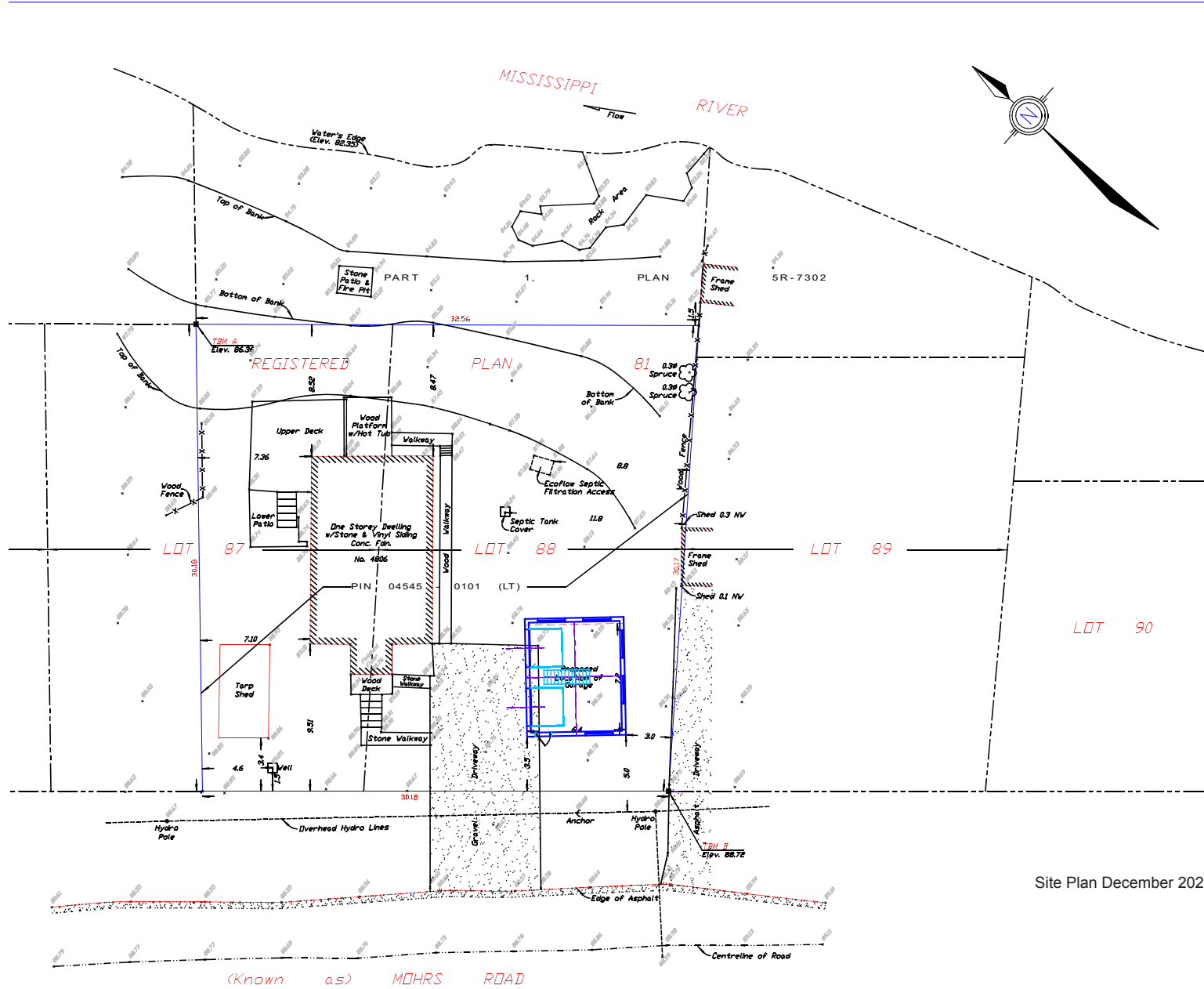
BENCHMARK TABLE				
TEMPORARY BENCHMARK (TBM)	NORTHING	EASTING	ELEVATION	DESCRIPTION
TBM A	5030935.04	401822.28	86.36	IRON BAR
TBM B	5030892.15	401819.68	88.72	IRON BAR

GALETTA SIDE ROAD



AK ADAM KASPRZAK SURVEYING LTD.
 ONTARIO LAND SURVEYORS
 29 BRIDGE ST., P.O. BOX 633
 RENFREW ONTARIO K7V 4E7
 PHONE (613) 432-3048

SCALE: 1 : 150 REF: 22-2121 C
 FILE No :



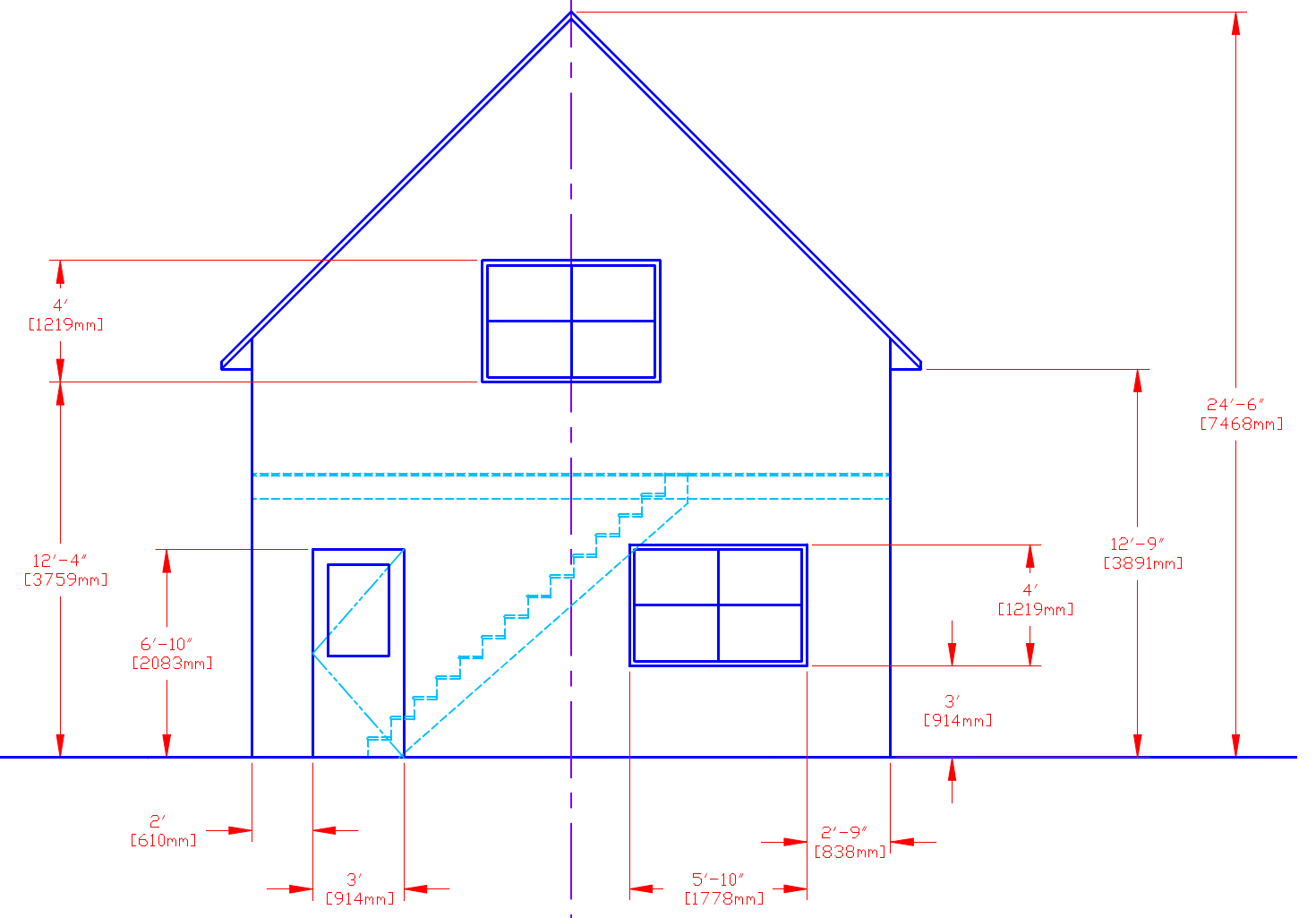
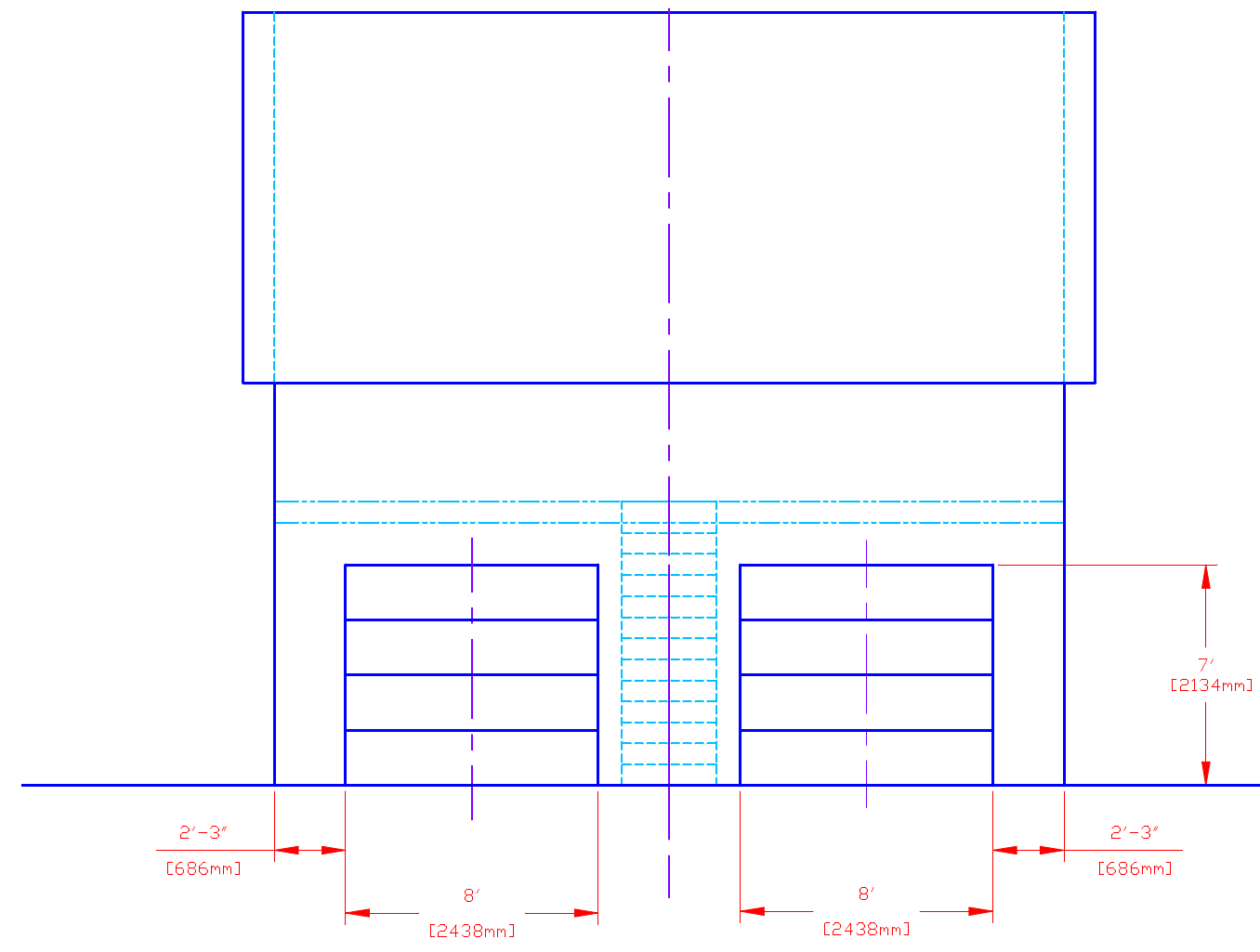
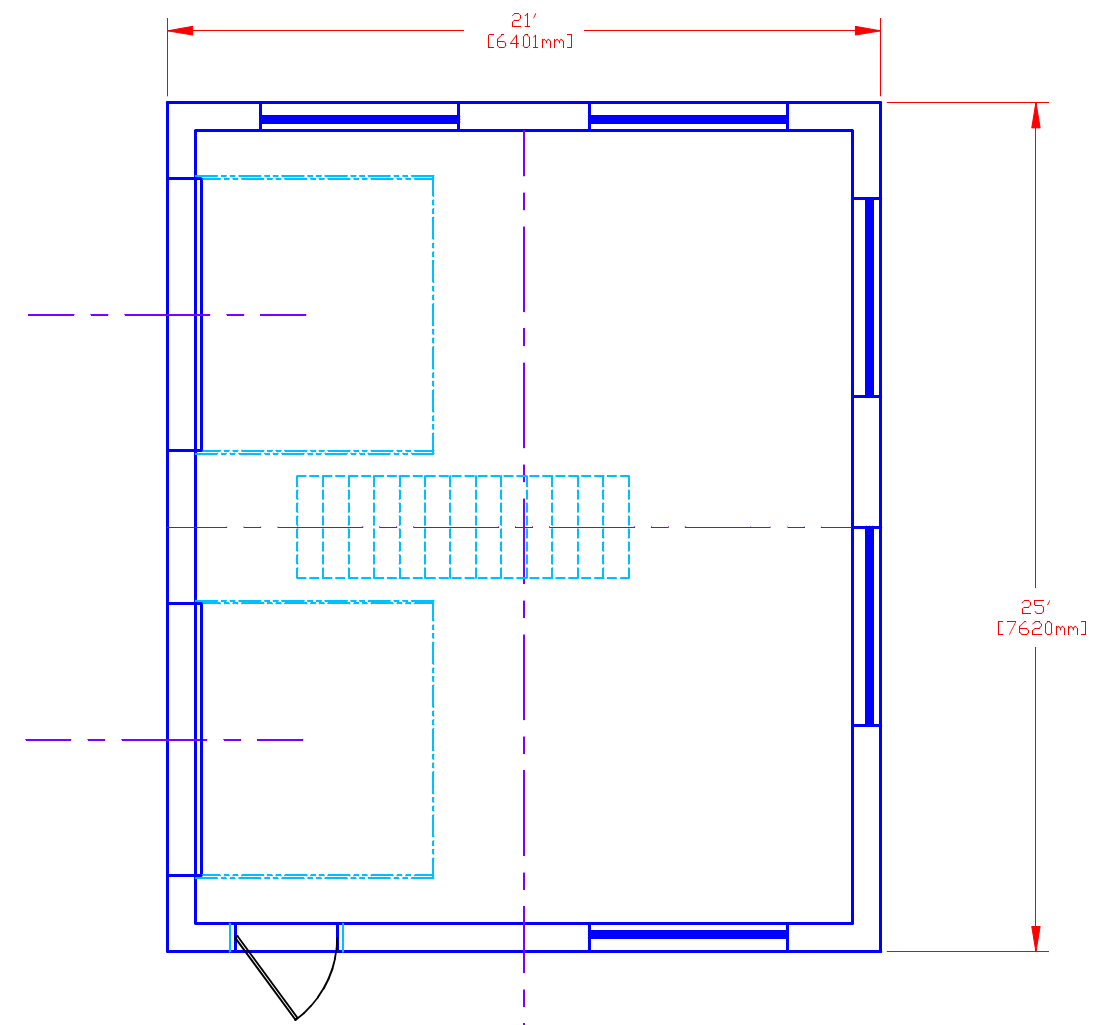
TOPOGRAPHIC SKETCH
 ILLUSTRATING ELEVATIONS
 4806 MOHRS ROAD
 GEOGRAPHIC TOWNSHIP OF FITZROY
 CITY OF OTTAWA
 SCALE 1 : 150
 METRES

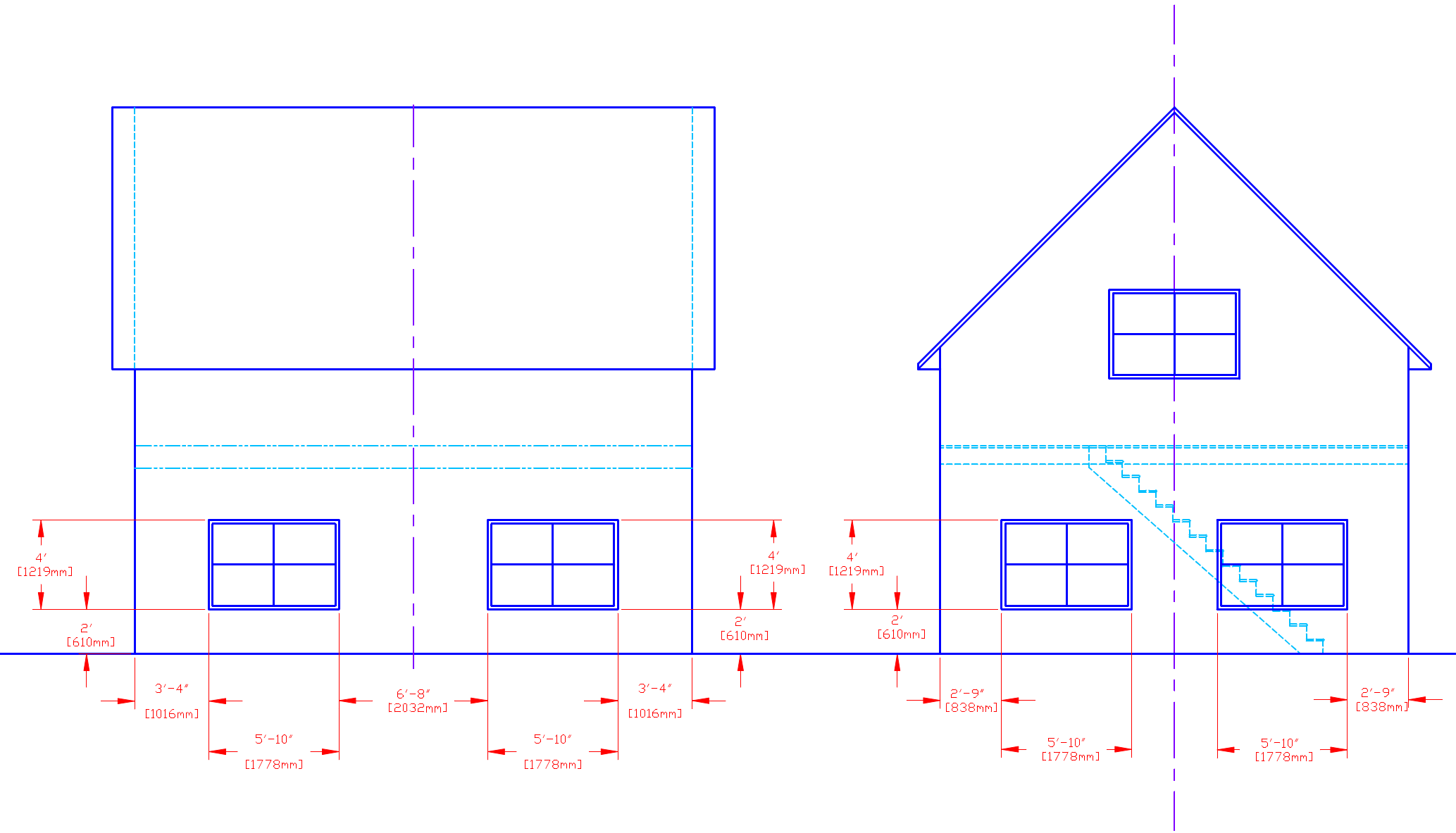
METRIC NOTE:
 DISTANCES AND COORDINATES SHOWN ON THIS PLAN ARE IN METRES
 AND CAN BE CONVERTED TO FEET BY DIVIDING BY 0.3048.

ELEVATION NOTE:
 ELEVATIONS SHOWN ON THIS PLAN ARE OF GEODETIC ORIGIN AND
 ARE REFERRED TO EM 001 19773027 GEODETIC SURVEY OF CANADA,
 HAVING A PUBLISHED ELEVATION OF 89.31.

BENCHMARK TABLE				
TEMPORARY BENCHMARK (TBM)	NORTHING	EASTING	ELEVATION	DESCRIPTION
TBM A	5030935.04	401822.28	86.36	IRON BAR
TBM B	5030892.15	401819.68	88.72	IRON BAR

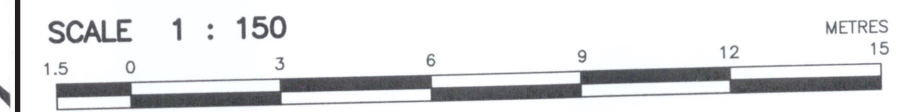
Site Plan December 2022





As the lower bank along the river shore is part of lands owned by the power company - Portage Power - operating the dam and power plant; our plans to add native trees and shoreline plants and shrubs are being made in discussion with the Manager of the dam.

TOPOGRAPHIC SKETCH
 ILLUSTRATING ELEVATIONS
4806 MOHRS ROAD
 GEOGRAPHIC TOWNSHIP OF FITZROY
 CITY OF OTTAWA



METRIC NOTE:
 DISTANCES AND COORDINATES SHOWN ON THIS PLAN ARE IN METRES AND CAN BE CONVERTED TO FEET BY DIVIDING BY 0.3048.

ELEVATION NOTE:
 ELEVATIONS SHOWN ON THIS PLAN ARE OF GEODETIC ORIGIN AND ARE REFERRED TO BM 00119773027 GEODETIC SURVEY OF CANADA, HAVING A PUBLISHED ELEVATION OF 89.31.



BENCHMARK TABLE				
TEMPORARY BENCHMARK (TBM)	NORTHING	EASTING	ELEVATION	DESCRIPTION
TBM A	5030935.04	401822.28	86.36	IRON BAR
TBM B	5030892.15	401819.68	88.72	IRON BAR

AK ADAM KASPRZAK SURVEYING LTD.
 ONTARIO LAND SURVEYORS
 29 BRIDGE ST., P.O. BOX 633
 RENFREW ONTARIO K7V 4E7
 PHONE (613) 432-3048

SCALE: 1 : 150 REF: 22-2121 B
 FILE No :

PLANTING PLAN

recently planted:

- ⊗ four-foot cedars (10)
- × seedling spruce (11)
- ☆ seedling maple (2)
- ◇ new growth sumac

proposed planting:

- ⊕ Transplant of 7ft spruce in footprint of new garage
- ⊗ New spruce or local species tree

note * - native trees (larch, birch or red maple)
 - native shoreline plants and shrubs (milk weed and red osier dogwood)

(Known as) MOHRS ROAD