

**PLAN 4M-1634**  
 I CERTIFY THAT THIS PLAN IS REGISTERED IN THE LAND REGISTRY OFFICE FOR THE LAND TITLES DIVISION OF OTTAWA-CARLETON NO. 4 AT 10:00 O'CLOCK ON THE 20th DAY OF July 2019 AND ENTERED IN THE PARCEL REGISTER FOR PROPERTY IDENTIFIERS 0467-0108 AND 0467-0112 AND THE REQUIRED CONSENTS ARE REGISTERED AS PLAN DOCUMENT NO. 0023151686

**A. O'SULLIVAN**  
 REPRESENTATIVE FOR LAND REGISTRATION  
 This plan comprises all of PIN 0467-0108 and part of PIN 0467-0112.  
 ALL OF BLOCK 18  
 PART OF BLOCKS 1, 2, 3, 4, 14  
 PART OF RUE LUSK STREET, SUBJECT TO EASEMENT INST. LTR74931.

APPROVED UNDER SECTION 51 OF THE PLANNING ACT BY THE CITY OF OTTAWA  
 THIS 26th DAY OF June 2019  
**STEPHEN SULLIVAN**  
 GENERAL MANAGER  
 PLANNING AND ECONOMIC DEVELOPMENT DEPARTMENT  
 CITY OF OTTAWA

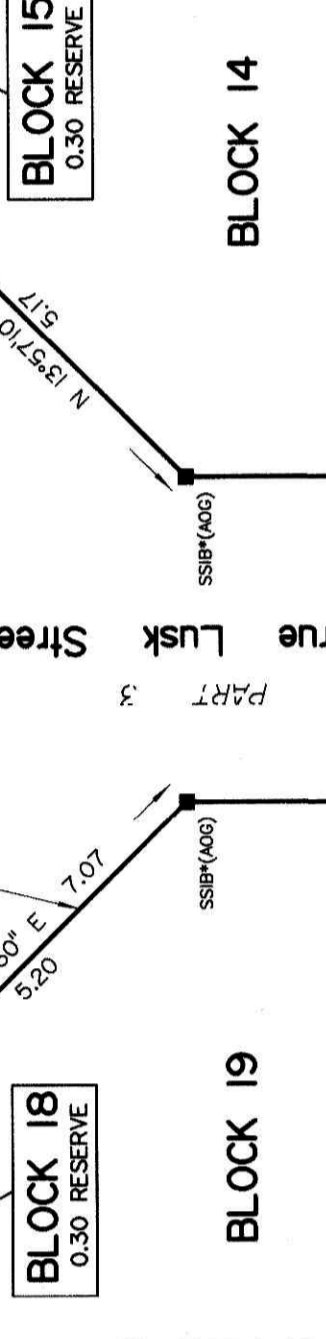
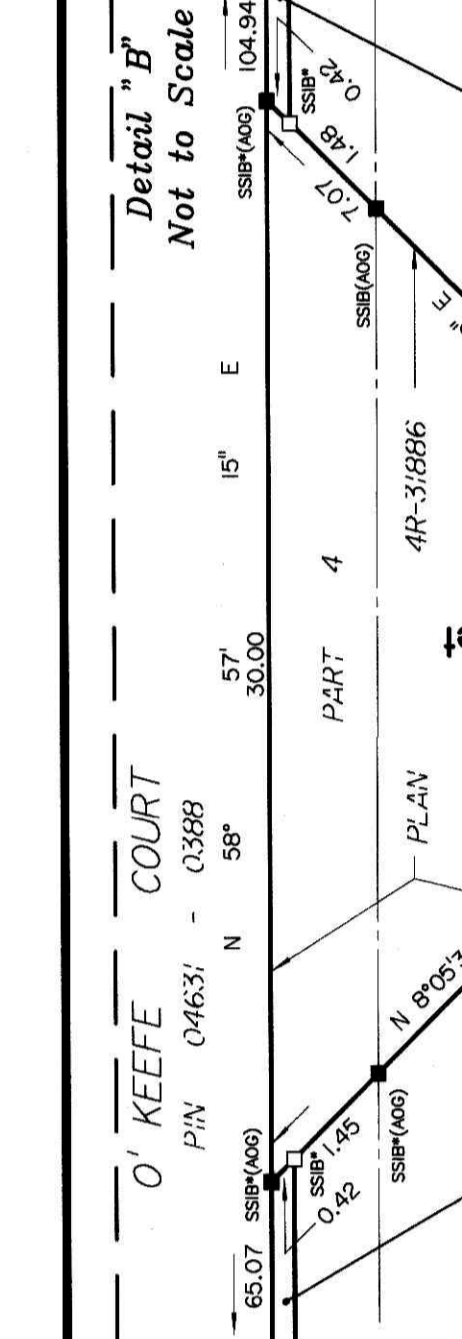
**PLAN OF SUBDIVISION OF PART OF LOT 20 CONCESSION 4 (Rideau Front) Geographic Township of Nepean CITY OF OTTAWA**  
 Surveyed by Annis, O'Sullivan, Vollebek Ltd.  
 Scale: 1:750  
 Metric DISTANCES AND COORDINATES SHOWN ON THIS PLAN ARE IN METRES AND CAN BE CONVERTED TO FEET BY DIVIDING BY 0.3048.

**OWNER'S CERTIFICATE**  
 THIS IS TO CERTIFY THAT:  
 1. Blocks 1 to 14, Block 18, Block 19, Block 20, Block 21 and the Reserves, namely Blocks 15, 16, 17 and 18 have been laid out in accordance with our intentions.  
 2. The Streets and Street Widening are dedicated to City of Ottawa as public highways.

**SURVEYOR'S CERTIFICATE**  
 This survey and plan are correct and in accordance with the Survey Act, the Surveyors Act and the Land Titles Act and the regulations made under them.  
 This survey was completed on the 26th day of February, 2019.

**NOTES AND LEGEND**  
 denotes  
 - Survey Monument Plotted  
 - SSB Standard Iron Bar  
 - CC Cut Cross  
 - IB Iron Bar  
 - (AOG) 0.3 long Survey Monument  
 - (PI) Annis, O'Sullivan, Vollebek Ltd.  
 - (P) Annis, O'Sullivan, Vollebek Ltd.  
 - (R) 0.3 long Survey Monument  
 - (M) 0.3 long Survey Monument  
 - (P) 0.3 long Survey Monument  
 - (M) 0.3 long Survey Monument  
 Distances shown on curved lines are Arc Distances unless otherwise noted.

**Distances shown on this plan are ground distances and can be converted to grid distances by multiplying by the combined scale factor of 0.99921.**  
 Bearings are given derived from Can Met 2016 Real Time Network GPS observations on reference points A and B, shown hereon, having a bearing of N 0° 00' 00" W and are referred to Specialized Control Points NAD-83 (original).  
 Coordinates are derived from Can Met 2016 Real Time Network GPS observations referred to Specialized Control Points 0191971338 and 01919871649, MTM Zone 8 (78° 30' West Longitude) NAD-83 (original).  
 Coordinate values are to urban accuracy in accordance with O. Reg. 218/10.  
 Northings 504955.09 Eastings 546449.01  
 Northings 5015105.53 Eastings 372435.05  
 Northings 5015105.53 Eastings 300988.72  
 Northings 5015323.48 Eastings 300700.79  
 Caution: Coordinates cannot, in themselves, be used to re-establish corners or boundaries shown on this plan.



**OWNERS CERTIFICATE**  
 THIS IS TO CERTIFY THAT:  
 1. Blocks 1 to 14, Block 18, Block 19, Block 20, Block 21 and the Reserves, namely Blocks 15, 16, 17 and 18 have been laid out in accordance with our intentions.  
 2. The Streets and Street Widening are dedicated to City of Ottawa as public highways.

**SURVEYOR'S CERTIFICATE**  
 This survey and plan are correct and in accordance with the Survey Act, the Surveyors Act and the Land Titles Act and the regulations made under them.  
 This survey was completed on the 26th day of February, 2019.

**NOTES AND LEGEND**  
 denotes  
 - Survey Monument Plotted  
 - SSB Standard Iron Bar  
 - CC Cut Cross  
 - IB Iron Bar  
 - (AOG) 0.3 long Survey Monument  
 - (PI) Annis, O'Sullivan, Vollebek Ltd.  
 - (P) Annis, O'Sullivan, Vollebek Ltd.  
 - (R) 0.3 long Survey Monument  
 - (M) 0.3 long Survey Monument  
 Distances shown on curved lines are Arc Distances unless otherwise noted.

**Distances shown on this plan are ground distances and can be converted to grid distances by multiplying by the combined scale factor of 0.99921.**  
 Bearings are given derived from Can Met 2016 Real Time Network GPS observations on reference points A and B, shown hereon, having a bearing of N 0° 00' 00" W and are referred to Specialized Control Points NAD-83 (original).  
 Coordinates are derived from Can Met 2016 Real Time Network GPS observations referred to Specialized Control Points 0191971338 and 01919871649, MTM Zone 8 (78° 30' West Longitude) NAD-83 (original).  
 Coordinate values are to urban accuracy in accordance with O. Reg. 218/10.  
 Northings 504955.09 Eastings 546449.01  
 Northings 5015105.53 Eastings 372435.05  
 Northings 5015105.53 Eastings 300988.72  
 Northings 5015323.48 Eastings 300700.79  
 Caution: Coordinates cannot, in themselves, be used to re-establish corners or boundaries shown on this plan.

**OWNERS CERTIFICATE**  
 THIS IS TO CERTIFY THAT:  
 1. Blocks 1 to 14, Block 18, Block 19, Block 20, Block 21 and the Reserves, namely Blocks 15, 16, 17 and 18 have been laid out in accordance with our intentions.  
 2. The Streets and Street Widening are dedicated to City of Ottawa as public highways.

**SURVEYOR'S CERTIFICATE**  
 This survey and plan are correct and in accordance with the Survey Act, the Surveyors Act and the Land Titles Act and the regulations made under them.  
 This survey was completed on the 26th day of February, 2019.

**NOTES AND LEGEND**  
 denotes  
 - Survey Monument Plotted  
 - SSB Standard Iron Bar  
 - CC Cut Cross  
 - IB Iron Bar  
 - (AOG) 0.3 long Survey Monument  
 - (PI) Annis, O'Sullivan, Vollebek Ltd.  
 - (P) Annis, O'Sullivan, Vollebek Ltd.  
 - (R) 0.3 long Survey Monument  
 - (M) 0.3 long Survey Monument  
 Distances shown on curved lines are Arc Distances unless otherwise noted.

**Distances shown on this plan are ground distances and can be converted to grid distances by multiplying by the combined scale factor of 0.99921.**  
 Bearings are given derived from Can Met 2016 Real Time Network GPS observations on reference points A and B, shown hereon, having a bearing of N 0° 00' 00" W and are referred to Specialized Control Points NAD-83 (original).  
 Coordinates are derived from Can Met 2016 Real Time Network GPS observations referred to Specialized Control Points 0191971338 and 01919871649, MTM Zone 8 (78° 30' West Longitude) NAD-83 (original).  
 Coordinate values are to urban accuracy in accordance with O. Reg. 218/10.  
 Northings 504955.09 Eastings 546449.01  
 Northings 5015105.53 Eastings 372435.05  
 Northings 5015105.53 Eastings 300988.72  
 Northings 5015323.48 Eastings 300700.79  
 Caution: Coordinates cannot, in themselves, be used to re-establish corners or boundaries shown on this plan.

**OWNERS CERTIFICATE**  
 THIS IS TO CERTIFY THAT:  
 1. Blocks 1 to 14, Block 18, Block 19, Block 20, Block 21 and the Reserves, namely Blocks 15, 16, 17 and 18 have been laid out in accordance with our intentions.  
 2. The Streets and Street Widening are dedicated to City of Ottawa as public highways.

**SURVEYOR'S CERTIFICATE**  
 This survey and plan are correct and in accordance with the Survey Act, the Surveyors Act and the Land Titles Act and the regulations made under them.  
 This survey was completed on the 26th day of February, 2019.

**NOTES AND LEGEND**  
 denotes  
 - Survey Monument Plotted  
 - SSB Standard Iron Bar  
 - CC Cut Cross  
 - IB Iron Bar  
 - (AOG) 0.3 long Survey Monument  
 - (PI) Annis, O'Sullivan, Vollebek Ltd.  
 - (P) Annis, O'Sullivan, Vollebek Ltd.  
 - (R) 0.3 long Survey Monument  
 - (M) 0.3 long Survey Monument  
 Distances shown on curved lines are Arc Distances unless otherwise noted.

**Distances shown on this plan are ground distances and can be converted to grid distances by multiplying by the combined scale factor of 0.99921.**  
 Bearings are given derived from Can Met 2016 Real Time Network GPS observations on reference points A and B, shown hereon, having a bearing of N 0° 00' 00" W and are referred to Specialized Control Points NAD-83 (original).  
 Coordinates are derived from Can Met 2016 Real Time Network GPS observations referred to Specialized Control Points 0191971338 and 01919871649, MTM Zone 8 (78° 30' West Longitude) NAD-83 (original).  
 Coordinate values are to urban accuracy in accordance with O. Reg. 218/10.  
 Northings 504955.09 Eastings 546449.01  
 Northings 5015105.53 Eastings 372435.05  
 Northings 5015105.53 Eastings 300988.72  
 Northings 5015323.48 Eastings 300700.79  
 Caution: Coordinates cannot, in themselves, be used to re-establish corners or boundaries shown on this plan.

