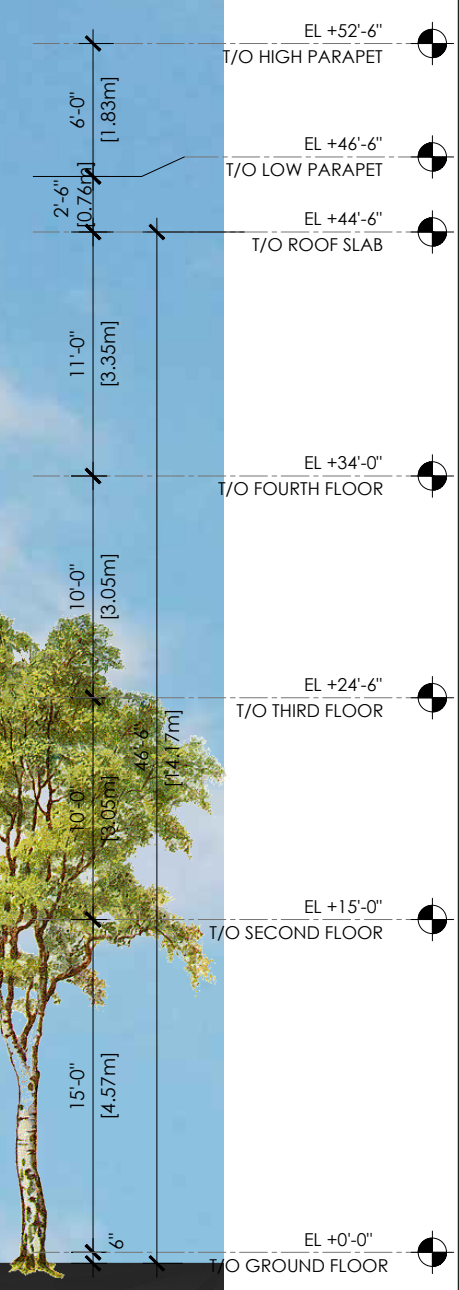


Committee of Adjustment
Received | Reçu le

Revised | Modifié le : 2022-11-04

City of Ottawa | Ville d'Ottawa
Comité de dérogation



Key Plan:

No.	Date:	Issue/Revision	By:
1	22.10.25	ISSUED FOR MINOR VARIANCE SUB.	

Drawing Issues/Revisions:

Note:
ALL DIMENSIONS AND INFORMATION SHOWN ON THESE DRAWINGS MUST BE CHECKED AND VERIFIED ON SITE AND ANY DISCREPANCIES REPORTED TO THE ARCHITECT PRIOR TO CONSTRUCTION AND FABRICATION OF ITS COMPONENTS. SHOULD EXISTING CONDITIONS OR SERVICES BE FOUND TO VARY FROM THAT INDICATED ON THE DRAWINGS, THE ARCHITECT MUST BE NOTIFIED IMMEDIATELY.
FEATURES OF CONSTRUCTION NOT FULLY SHOWN ARE ASSUMED TO BE THE SAME CHARACTER AS THOSE NOTED FOR SIMILAR CONDITIONS.
UNLESS SPECIFICALLY NOTED OTHERWISE ON THE DRAWINGS, NO PROVISION HAS BEEN MADE IN THE DESIGN FOR CONDITIONS OCCURRING DURING CONSTRUCTION. IT SHALL BE THE RESPONSIBILITY OF THE CONTRACTOR TO PROVIDE ALL NECESSARY BRACING, SHORINGS, SHEET PILING OR OTHER TEMPORARY SUPPORTS, TO SAFEGUARD ALL EXISTING OR ADJACENT STRUCTURES AFFECTED BY THIS WORK.
ALL DRAWINGS AND RELATED DOCUMENTS SHALL REMAIN THE PROPERTY AND COPYRIGHT OF MATAJ ARCHITECTS INC.
USE LATEST REVISED DRAWINGS. DO NOT SCALE DRAWINGS.



Architect's Stamp
MATAJ ARCHITECTS INCORPORATED
206-418 Iroquois Shore Rd.
Oakville, Ontario L6H 0J7
T.905.281.4444

Project:
HOLIDAY INN OTTAWA
140 Lusk St, Ottawa, ON

Sheet Title:
PROPOSED SOUTH ELEVATION

Design By: M.A.	Drawn By: S.F.	Approved By: A.M.
Scale: 1/8"=1'-0"	Date: 22-10-15	Project No.: 22-027

Drawing No:
A.301

Drawing Series:
ARCHITECTURAL - SPA

EXTERIOR FINISH SCHEDULE			
	MATERIAL/FINISH	COLOR	NOTES
EIFS			
1	EIFS BY CORNERPOINT OR EQUIVALENT, SMOOTH FINISH	BLACK	
2	EIFS BY CORNERPOINT OR EQUIVALENT, SANDSTONE FINISH	BM, KENDALL CHARCOAL HC-166	
3	WOOD VENEER & EPOXY OVER EIFS SYSTEM, BY CORNER POINT	TIMBER TEAK EQUIVALENT	
4	EIFS BY CORNERPOINT OR EQUIVALENT, GEMSTONE FINISH	BLACK, MAINE	
5	EIFS BY CORNERPOINT OR EQUIVALENT, METALLIC FINISH	WHITE DOVE, BM OC 151	
6	EIFS BY CORNERPOINT OR EQUIVALENT, SMOOTH FINISH	WHITE DOVE, BM OC 151	
7	EIFS PANEL BY DURABOND OR EQUIVALENT, SANDSTONE FINISH	BM, MOZART BLUE 1665	
8	EIFS BY CORNERPOINT OR EQUIVALENT, SMOOTH FINISH	BM, FIELD STONE 1558	
9	EIFS 3/4" REVEAL	TO MATCH ADJACENT COLOR	
10	EXTERIOR GRADE PAINT ON 3" DIAMETER GALVANIZED STEEL COLUMNS, MATTE FINISH	WHITE	
11	EIFS BY CORNERPOINT OR EQUIVALENT, SMOOTH FINISH	BM, Classic Burgundy HC-182	
12	STAC-BOND ALUMINUM COMPOSITE PANEL, NATURAL MIRROR FINISH	STB-M01	
LIGHTING			
20	2 LINEAR WHITE STRIPS WITH LENS ON A DIMMER	3000 K	
21	4" X 4" LED LIGHT	3000 K, WHITE LENS	
22	DECORATIVE WALL SCONCE	3000 K	
23	ILLUMINATED SIGNAGE		

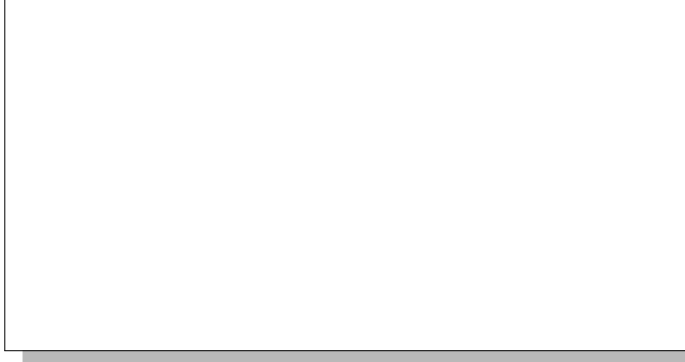
SPECIAL INSTRUCTIONS	
A	TYPICAL WALL PLANE, 0.00 (6" EIFS)
B	+6" PROJECTING FROM 'A' PLANE
C	-1" RECESSED FROM 'A' PLANE
D	-2" RECESSED FROM 'A' PLANE
E	-3" RECESSED FROM 'A' PLANE
F	-4" RECESSED FROM 'A' PLANE

GENERAL NOTES:

- ALL GRILLS IN EXTERIOR ELEVATION PAINTED TO MATCH ADJACENT COLOR.
- SAMPLES OF ALL EXTERIOR FINISHES AND COLORS SHOULD BE SUBMITTED TO ARCHITECT FOR REVIEW AND APPROVAL BEFORE PROCEEDING WITH CONSTRUCTION
- CM/BUILDER SHALL PROVIDE ACTUAL SAMPLE FINISHES ON EXTERIOR WALLS FOR OWNERSHIP APPROVAL BEFORE WORK COMMENCES ON FINAL EXTERIOR FINISHES REGARDLESS OF ARCHITECTS OR OWNERSHIP'S EARLIER SAMPLE APPROVAL IN REGARDS, ESPECIALLY AS IT PERTAINS TO STUCCO COLORS.
- FOR FIELD APPLIED EIFS, CM/GC TO PROVIDE SHOP DRAWING INDICATING ALL EXTERIOR MECHANICAL PENETRATION AS IT PERTAINS TO THEIR SIZE/LOCATION & FINISH/COLOR



Key Plan:



No.	Date:	Issue/Revision	By:
1	22.10.25	ISSUED FOR MINOR VARIANCE SUB.	

Drawing Issues/Revisions:

Note:
 ALL DIMENSIONS AND INFORMATION SHOWN ON THESE DRAWINGS MUST BE CHECKED AND VERIFIED ON SITE AND ANY DISCREPANCIES REPORTED TO THE ARCHITECT PRIOR TO CONSTRUCTION AND FABRICATION OF ITS COMPONENTS. SHOULD EXISTING CONDITIONS OR SERVICES BE FOUND TO VARY FROM THAT INDICATED ON THE DRAWINGS, THE ARCHITECT MUST BE NOTIFIED IMMEDIATELY.
 FEATURES OF CONSTRUCTION NOT FULLY SHOWN ARE ASSUMED TO BE THE SAME CHARACTER AS THOSE NOTED FOR SIMILAR CONDITIONS.
 UNLESS SPECIFICALLY NOTED OTHERWISE ON THE DRAWINGS, NO PROVISION HAS BEEN MADE IN THE DESIGN FOR CONDITIONS OCCURRING DURING CONSTRUCTION. IT SHALL BE THE RESPONSIBILITY OF THE CONTRACTOR TO PROVIDE ALL NECESSARY BRACING, SHORINGS, SHEET PILING OR OTHER TEMPORARY SUPPORTS, TO SAFEGUARD ALL EXISTING OR ADJACENT STRUCTURES AFFECTED BY THIS WORK.
 ALL DRAWINGS AND RELATED DOCUMENTS SHALL REMAIN THE PROPERTY AND COPYRIGHT OF MATAJ ARCHITECTS INC.
 USE LATEST REVISED DRAWINGS. DO NOT SCALE DRAWINGS.



Architect's Stamp
MATAJ ARCHITECTS
 INCORPORATED
 206-418 Iroquois Shore Rd.
 Oakville, Ontario L6L 0J7
 1.905.281.4444

Project:
HOLIDAY INN OTTAWA
 140 Lusk St, Ottawa, ON

Sheet Title:
PROPOSED SOUTH ELEVATION

Design By: M.A.	Drawn By: S.F.	Approved By: A.M.
Scale: 1/8"=1'-0"	Date: 22-10-15	Project No.: 22-027

Drawing No:
A.301a
 Drawing Series:
 ARCHITECTURAL - SPA

Committee of Adjustment
 Received | Reçu le
Revised | Modifié le : 2022-11-04
 City of Ottawa | Ville d'Ottawa
 Comité de dérogation



Key Plan:



No.	Date:	Issue/Revision	By:
1	22.10.25	ISSUED FOR MINOR VARIANCE SUB.	

Drawing Issues/Revisions:

Note:
 ALL DIMENSIONS AND INFORMATION SHOWN ON THESE DRAWINGS MUST BE CHECKED AND VERIFIED ON SITE AND ANY DISCREPANCIES REPORTED TO THE ARCHITECT PRIOR TO CONSTRUCTION AND FABRICATION OF ITS COMPONENTS. SHOULD EXISTING CONDITIONS OR SERVICES BE FOUND TO VARY FROM THAT INDICATED ON THE DRAWINGS, THE ARCHITECT MUST BE NOTIFIED IMMEDIATELY.

FEATURES OF CONSTRUCTION NOT FULLY SHOWN ARE ASSUMED TO BE THE SAME CHARACTER AS THOSE NOTED FOR SIMILAR CONDITIONS. UNLESS SPECIFICALLY NOTED OTHERWISE ON THE DRAWINGS, NO PROVISION HAS BEEN MADE IN THE DESIGN FOR CONDITIONS OCCURRING DURING CONSTRUCTION. IT SHALL BE THE RESPONSIBILITY OF THE CONTRACTOR TO PROVIDE ALL NECESSARY BRACING, SHORINGS, SHEET PILING OR OTHER TEMPORARY SUPPORTS, TO SAFEGUARD ALL EXISTING OR ADJACENT STRUCTURES AFFECTED BY THIS WORK.

ALL DRAWINGS AND RELATED DOCUMENTS SHALL REMAIN THE PROPERTY AND COPYRIGHT OF MATAJ ARCHITECTS INC. USE LATEST REVISED DRAWINGS. DO NOT SCALE DRAWINGS.



Architect's Stamp
MATAJ ARCHITECTS
 INCORPORATED
 206-418 Iroquois Shore Rd
 Oakville, Ontario L6H 0K7
 T 905.281.4444

Project:
HOLIDAY INN OTTAWA
 140 Lusk St, Ottawa, ON

Sheet Title:
PROPOSED EAST & WEST ELEVATIONS

Design By: M.A.	Drawn By: S.F.	Approved By: A.M.
Scale: 1/8"=1'-0"	Date: 22-10-15	Project No.: 22-027

Drawing No:
A.302

Drawing Series:
 ARCHITECTURAL - SPA

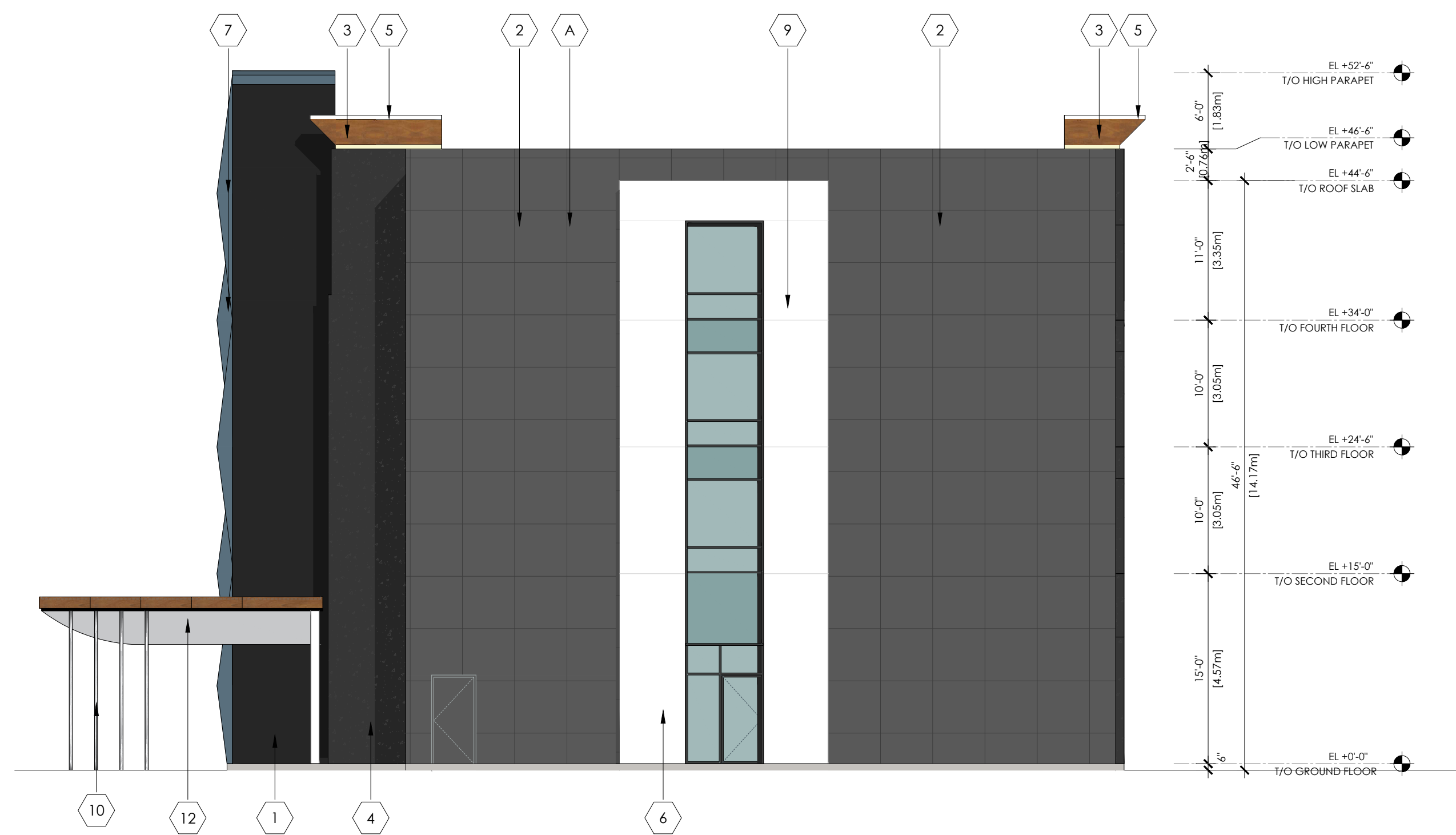
EXTERIOR FINISH SCHEDULE			
	MATERIAL/FINISH	COLOR	NOTES
EIFS			
1	EIFS BY CORNERPOINT OR EQUIVALENT, SMOOTH FINISH	BLACK	
2	EIFS BY CORNERPOINT OR EQUIVALENT, SANDSTONE FINISH	BM, KENDALL CHARCOAL HC-166	
3	WOOD VENEER & EPOXY OVER EIFS SYSTEM, BY CORNER POINT	TIMBER TEAK EQUIVALENT	
4	EIFS BY CORNERPOINT OR EQUIVALENT, GEMSTONE FINISH	BLACK MAINE	
5	EIFS BY CORNERPOINT OR EQUIVALENT, METALLIC FINISH	WHITE DOVE, BM OC 151	
6	EIFS BY CORNERPOINT OR EQUIVALENT, SMOOTH FINISH	WHITE DOVE, BM OC 151	
7	EIFS PANEL BY DURABOND OR EQUIVALENT, SANDSTONE FINISH	BM, MOZART BLUE 1665	
8	EIFS BY CORNERPOINT OR EQUIVALENT, SMOOTH FINISH	BM, FIELD STONE 1558	
9	EIFS 3/4" REVEAL	TO MATCH ADJACENT COLOR	
10	EXTERIOR GRADE PAINT ON 3" DIAMETER GALVANIZED STEEL COLUMNS, MATTE FINISH	WHITE	
11	EIFS BY CORNERPOINT OR EQUIVALENT, SMOOTH FINISH	BM, Classic Burgundy HC-182	
12	STAC-BOND ALUMINUM COMPOSITE PANEL, NATURAL MIRROR FINISH	STB-M01	
LIGHTING			
20	2 LINEAR WHITE STRIPS WITH LENS ON A DIMMER	3000 K	
21	4" X 4" LED LIGHT	3000 K, WHITE LENS	
22	DECORATIVE WALL SCONCE	3000 K	
23	ILLUMINATED SIGNAGE		

SPECIAL INSTRUCTIONS	
A	TYPICAL WALL PLANE, 0.00 (6" EIFS)
B	+6" PROJECTING FROM 'A' PLANE
C	-1" RECESSED FROM 'A' PLANE
D	-2" RECESSED FROM 'A' PLANE
E	-3" RECESSED FROM 'A' PLANE
F	-4" RECESSED FROM 'A' PLANE

GENERAL NOTES:

- ALL GRILLS IN EXTERIOR ELEVATION PAINTED TO MATCH ADJACENT COLOR.
- SAMPLES OF ALL EXTERIOR FINISHES AND COLORS SHOULD BE SUBMITTED TO ARCHITECT FOR REVIEW AND APPROVAL BEFORE PROCEEDING WITH CONSTRUCTION
- CM/BUILDER SHALL PROVIDE ACTUAL SAMPLE FINISHES ON EXTERIOR WALLS FOR OWNERSHIP APPROVAL BEFORE WORK COMMENCES ON FINAL EXTERIOR FINISHES REGARDLESS OF ARCHITECT'S OR OWNERSHIP'S EARLIER SAMPLE APPROVAL IN REGARDS, ESPECIALLY AS IT PERTAINS TO STUCCO COLORS.
- FOR FIELD APPLIED EIFS, CM/GC TO PROVIDE SHOP DRAWING INDICATING ALL EXTERIOR MECHANICAL PENETRATION AS IT PERTAINS TO THEIR SIZE/LOCATION & FINISH/COLOR

Committee of Adjustment
 Received | Reçu le
Revised | Modifié le : 2022-11-04
 City of Ottawa | Ville d'Ottawa
 Comité de dérogation



Key Plan:

No.	Date:	Issue/Revision	By:
1	22.10.25	ISSUED FOR MINOR VARIANCE SUB.	

Drawing Issues/Revisions:

Note:
ALL DIMENSIONS AND INFORMATION SHOWN ON THESE DRAWINGS MUST BE CHECKED AND VERIFIED ON SITE AND ANY DISCREPANCIES REPORTED TO THE ARCHITECT PRIOR TO CONSTRUCTION AND FABRICATION OF ITS COMPONENTS. SHOULD EXISTING CONDITIONS OR SERVICES BE FOUND TO VARY FROM THAT INDICATED ON THE DRAWINGS, THE ARCHITECT MUST BE NOTIFIED IMMEDIATELY.

FEATURES OF CONSTRUCTION NOT FULLY SHOWN ARE ASSUMED TO BE THE SAME CHARACTER AS THOSE NOTED FOR SIMILAR CONDITIONS. UNLESS SPECIFICALLY NOTED OTHERWISE ON THE DRAWINGS, NO PROVISION HAS BEEN MADE IN THE DESIGN FOR CONDITIONS OCCURRING DURING CONSTRUCTION. IT SHALL BE THE RESPONSIBILITY OF THE CONTRACTOR TO PROVIDE ALL NECESSARY BRACING, SHORINGS, SHEET PILING OR OTHER TEMPORARY SUPPORTS TO SAFEGUARD ALL EXISTING OR ADJACENT STRUCTURES AFFECTED BY THIS WORK.

ALL DRAWINGS AND RELATED DOCUMENTS SHALL REMAIN THE PROPERTY AND COPYRIGHT OF MATAJ ARCHITECTS INC. USE LATEST REVISED DRAWINGS. DO NOT SCALE DRAWINGS.



Architect's Stamp
MATAJ ARCHITECTS
 INCORPORATED
 206-418 Iroquois Shore Rd.
 Oakville, Ontario L6H 0G7
 T.905.281.4444

Project:
HOLIDAY INN OTTAWA
 140 Lusk St, Ottawa, ON

Sheet Title:
PROPOSED EAST & WEST ELEVATIONS

Design By: M.A.	Drawn By: S.F.	Approved By: A.M.
Scale: 1/8"=1'-0"	Date: 22-10-15	Project No.: 22-027

Drawing No:
A.302a

Drawing Series:
 ARCHITECTURAL - SPA

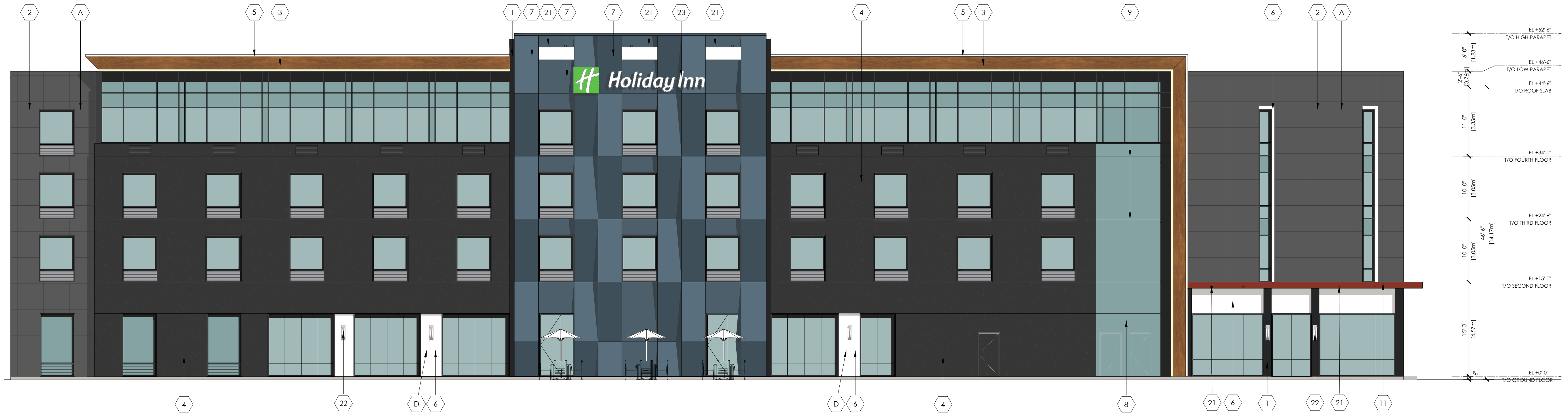
EXTERIOR FINISH SCHEDULE			
	MATERIAL/FINISH	COLOR	NOTES
EIFS			
1	EIFS BY CORNERPOINT OR EQUIVALENT, SMOOTH FINISH	BLACK	
2	EIFS BY CORNERPOINT OR EQUIVALENT, SANDSTONE FINISH	BM, KENDALL CHARCOAL HC-166	
3	WOOD VENEER & EPOXY OVER EIFS SYSTEM, BY CORNER POINT	TIMBER TEAK EQUIVALENT	
4	EIFS BY CORNERPOINT OR EQUIVALENT, GEMSTONE FINISH	BLACK MAINE	
5	EIFS BY CORNERPOINT OR EQUIVALENT, METALLIC FINISH	WHITE DOVE, BM OC 151	
6	EIFS BY CORNERPOINT OR EQUIVALENT, SMOOTH FINISH	WHITE DOVE, BM OC 151	
7	EIFS PANEL BY DURABOND OR EQUIVALENT, SANDSTONE FINISH	BM, MOZART BLUE 1665	
8	EIFS BY CORNERPOINT OR EQUIVALENT, SMOOTH FINISH	BM, FIELD STONE 1558	
9	EIFS 3/4" REVEAL	TO MATCH ADJACENT COLOR	
10	EXTERIOR GRADE PAINT ON 3" DIAMETER GALVANIZED STEEL COLUMNS, MATTE FINISH	WHITE	
11	EIFS BY CORNERPOINT OR EQUIVALENT, SMOOTH FINISH	BM, Classic Burgundy HC-182	
12	STAC-BOND ALUMINUM COMPOSITE PANEL, NATURAL MIRROR FINISH	STB-M01	
LIGHTING			
20	2 LINEAR WHITE STRIPS WITH LENS ON A DIMMER	3000 K	
21	4" X 4" LED LIGHT	3000 K, WHITE LENS	
22	DECORATIVE WALL SCONCE	3000 K	
23	ILLUMINATED SIGNAGE		

SPECIAL INSTRUCTIONS	
A	TYPICAL WALL PLANE, 0.00 (6" EIFS)
B	+6" PROJECTING FROM 'A' PLANE
C	-1" RECESSED FROM 'A' PLANE
D	-2" RECESSED FROM 'A' PLANE
E	-3" RECESSED FROM 'A' PLANE
F	-4" RECESSED FROM 'A' PLANE

GENERAL NOTES:

- ALL GRILLS IN EXTERIOR ELEVATION PAINTED TO MATCH ADJACENT COLOR.
- SAMPLES OF ALL EXTERIOR FINISHES AND COLORS SHOULD BE SUBMITTED TO ARCHITECT FOR REVIEW AND APPROVAL BEFORE PROCEEDING WITH CONSTRUCTION
- CM/BUILDER SHALL PROVIDE ACTUAL SAMPLE FINISHES ON EXTERIOR WALLS FOR OWNERSHIP APPROVAL BEFORE WORK COMMENCES ON FINAL EXTERIOR FINISHES REGARDLESS OF ARCHITECT'S OR OWNERSHIP'S EARLIER SAMPLE APPROVAL IN REGARDS, ESPECIALLY AS IT PERTAINS TO STUCCO COLORS.
- FOR FIELD APPLIED EIFS, CM/GC TO PROVIDE SHOP DRAWING INDICATING ALL EXTERIOR MECHANICAL PENETRATION AS IT PERTAINS TO THEIR SIZE/LOCATION & FINISH/COLOR

Committee of Adjustment
Received | Reçu le
Revised | Modifié le : 2022-11-04
City of Ottawa | Ville d'Ottawa
Comité de dérogation



Key Plan:

No.	Date:	Issue/Revision	By:
1	22.10.25	ISSUED FOR MINOR VARIANCE SUB.	

Drawing Issues/Revisions:

Note:
ALL DIMENSIONS AND INFORMATION SHOWN ON THESE DRAWINGS MUST BE CHECKED AND VERIFIED ON SITE AND ANY DISCREPANCIES REPORTED TO THE ARCHITECT PRIOR TO CONSTRUCTION AND FABRICATION OF ITS COMPONENTS. SHOULD EXISTING CONDITIONS OR SERVICES BE FOUND TO VARY FROM THAT INDICATED ON THE DRAWINGS, THE ARCHITECT MUST BE NOTIFIED IMMEDIATELY.

FEATURES OF CONSTRUCTION NOT FULLY SHOWN ARE ASSUMED TO BE THE SAME CHARACTER AS THOSE NOTED FOR SIMILAR CONDITIONS.
UNLESS SPECIFICALLY NOTED OTHERWISE ON THE DRAWINGS, NO PROVISION HAS BEEN MADE IN THE DESIGN FOR CONDITIONS OCCURRING DURING CONSTRUCTION. IT SHALL BE THE RESPONSIBILITY OF THE CONTRACTOR TO PROVIDE ALL NECESSARY BRACING, SHORINGS, SHEET PILING OR OTHER TEMPORARY SUPPORTS TO SAFEGUARD ALL EXISTING OR ADJACENT STRUCTURES AFFECTED BY THIS WORK.

ALL DRAWINGS AND RELATED DOCUMENTS SHALL REMAIN THE PROPERTY AND COPYRIGHT OF MATAJ ARCHITECTS INC.
USE LATEST REVISED DRAWINGS. DO NOT SCALE DRAWINGS.



Architect's Stamp

MATAJ ARCHITECTS
INCORPORATED
206-418 Iroquois Shore Rd.
Oakville, Ontario
L6H 0P7
1.905.281.4444

Project:
HOLIDAY INN OTTAWA

140 Lusk St, Ottawa, ON

Sheet Title:
**PROPOSED
NORTH ELEVATION**

Design By: M.A.	Drawn By: S.F.	Approved By: A.M.
Scale: 1/8"=1'-0"	Date: 22-10-15	Project No.: 22-027

Drawing No:
A.303a
Drawing Series:
ARCHITECTURAL - SPA