

DRAWING NOTES

- ① BLUE TINTED THERMAL UNITS
- ② SOLERA CURTAINWALL SYSTEM C/W SEMI OPAQUE THERMAL UNITS
- ③ ACM PANELS, SILVER METALLIC FINISH, TYPICAL
- ④ FINISHED RIBBED METAL SIDING, DARK GREY
- ⑤ SHOWROOM ENTRANCE AND VESTIBULE, PRODEMA WOOD GRAIN PANELS
- ⑥ CONTINUOUS LED STRIP LIGHTING AROUND PERIMETER
- ⑦ SHOP WINDOWS, CLEAR THERMAL UNITS C/W BUTT SILICONE JOINTS
- ⑧ ALL ALUMINUM ENTRANCES AND O/H DOORS TO BE CLEAR ANODIZED FINISH, TYPICAL
- ⑨ PAINTED STEEL DOORS TO BE DARK GREY TO MATCH SIDING
- ⑩ VOLVO WOODMARK AS PER VOLVO SIGN PROGRAM
- ⑪ DEALERSHIP NAME SIGN AS PER VOLVO SIGN PROGRAM
- ⑫ SERVICE SIGN AS PER SIGN PROGRAM

NOTES

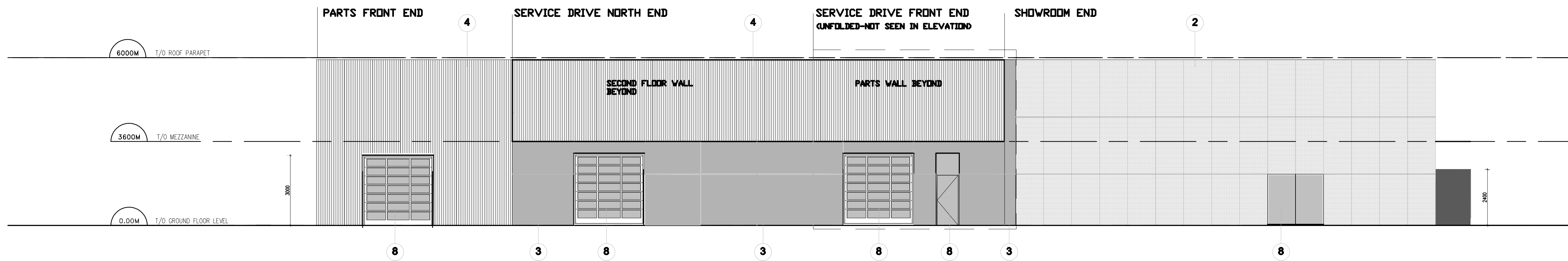
It is the responsibility of the appropriate contractor to check and verify all dimensions on site and report all errors and or omissions to the Architect.
 All contractors must comply with all pertinent codes and by-laws.
 Do not scale drawings.
 This drawing may not be used for construction until signed by the Architect.
 Copyright reserved.

LOCATION MAP



LEGAL DESCRIPTION

PART OF LOTS 17 AND 18
 REGISTERED PLAN 23
 CITY OF OTTAWA



NORTH ELEVATION (UNFOLDED)

Committee of Adjustment
 Received | Reçu le
 2022-09-23
 City of Ottawa | Ville d'Ottawa
 Comité de dérogation

1 NORTH ELEVATION UNFOLDED
 A008 SCALE: 1:100

no.	date	revision
3	28 JUL. 2022	ISSUED FOR REVIEW
2	26 MAY 2022	ISSUED FOR REVIEW
1	12 OCT. 2021	ISSUED FOR REVIEW

Stamp:

brian k. clark
ARCHITECT
 141 Catherine Street, Suite 102
 Ottawa, Ontario K2P 1C3
 TEL: (613) 238-7412 · FAX: 238-1799
 Email: bkclarkarchitect@on.albn.com

Project:
 VOLVO ST. LAURENT
 1300 MICHAEL STREET
 OTTAWA, ONTARIO

OTTAWA ONTARIO
 Drawing:
NORTH ELEVATION

Project No.	Drawn By:	Scale:
1811	DC	1 : 100
North Arrow:	Date:	Drawing No.
	12-OCT-2021	A008



D007-12-22-0012

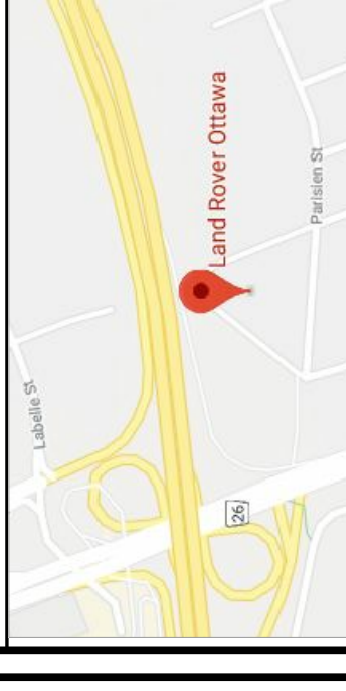
DRAWING NOTES

- 1 BLANK TINTED THERMAL UNITS
- 2 SOLERA CERAMIC WALL SYSTEM 0.7M SQM OPaque THERMAL UNITS
- 3 ACM PANELS, SILVER METALLIC FINISH, TYPICAL
- 4 PREFINISHED RIBBED METAL SIDING, DARK GREY
- 5 SHOWROOM ENTRANCE AND VESTIBULE, PROFORMA WOOD GRAIN PANELS
- 6 CONTINUOUS LED STRIP LIGHTING AROUND PERIMETER
- 7 SHOP WINDOWS, CLEAR THERMAL UNITS 0.7M BUTT SILICONE JOINTS
- 8 ALL ALUMINUM ENTRANCES AND 0.7M DOORS TO BE CLEAR ANODIZED FINISH, TYPICAL
- 9 PAINTED STEEL DOORS TO BE DARK GREY TO MATCH SIDING
- 10 VOLVO WOODMARK AS PER VOLVO SIGN PROGRAM
- 11 DEALERSHIP NAME SIGN AS PER VOLVO SIGN PROGRAM
- 12 SERVICE SIGN AS PER SIGN PROGRAM

NOTES

It is the responsibility of the appropriate authorities to verify all information on site and report all errors and omissions to the Architect.
 All contractors must comply with all pertinent codes and by-laws.
 Do not scale drawings.
 This drawing may not be used for construction until signed by the Architect.
 Copyright reserved.

LOCATION MAP



LEGAL DESCRIPTION

PART OF LOTS 17 AND 18
 REGISTERED PLAN 23
 CITY OF OTTAWA

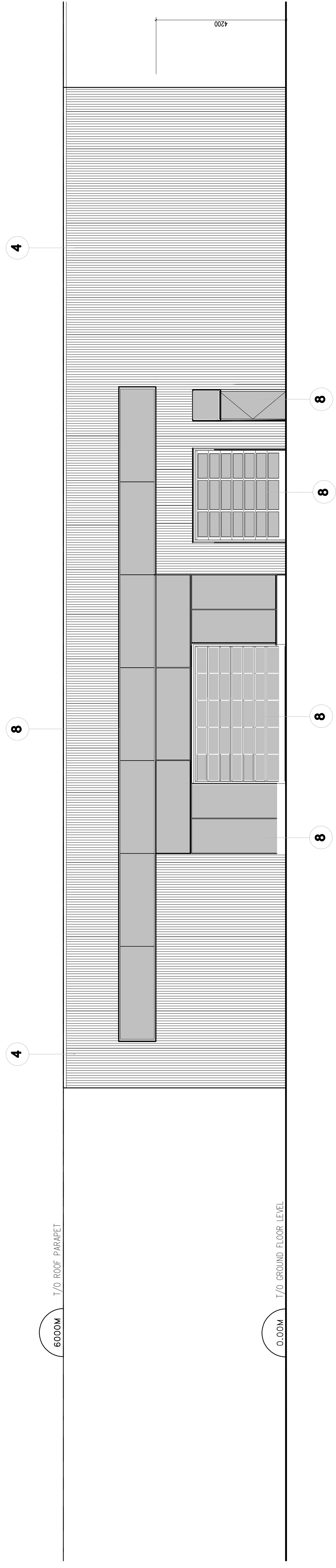
No.	Date	revision
3	26 JUL. 2022	ISSUED FOR REVIEW
2	26 MAY 2022	ISSUED FOR REVIEW
1	12 OCT. 2021	ISSUED FOR REVIEW

Project: **brian k. clark**
A.R.C.H.I.T.E.C.T
 141 Catherine Street, Suite 102
 Ottawa, Ontario K2P 1C3
 TEL: (613) 238-7412 · FAX: 238-1799
 Email: bkc@brianclarkarchitect.com

Project: **VOLVO ST. LAURENT**
 1300 MICHAEL STREET
 OTTAWA, ONTARIO

Project No. **1811** Scale: **1 : 75**
 Drawn By: **DC** Class: **12-OCT-2021**
 Drawing No. **A007**

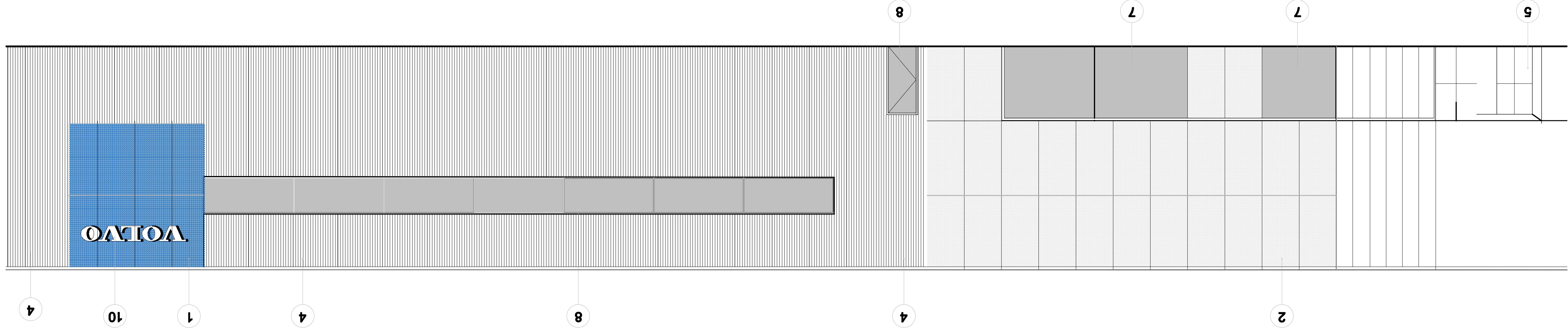
City: **OTTAWA** Drawing: **ONTARIO**
EAST ELEVATION



EAST ELEVATION

1 EAST ELEVATION
A007 SCALE: 1:75

SOUTH ELEVATION



- DRAWING NOTES**
- 1 BLUE TINTED THERMAL UNITS
 - 2 SOLERA CURTAINWALL SYSTEM C/W SEMI OPAQUE THERMAL UNITS
 - 3 K&M PANELS, SILVER METALLIC FINISH, TYPICAL
 - 4 FINISHED REBbed METAL SIGN, DARK GREY
 - 5 SHOWROOM ENTRANCE AND VESTIBULE, PROCEKA WOOD GRAIN PANELS
 - 6 CONTINUOUS LED STRIP LIGHTING AROUND PERIMETER
 - 7 SHOP WINDOWS, CLEAR THERMAL UNITS C/W BUTT SILICONE JOINTS
 - 8 ALL ALUMINIUM ENTRANCES AND O/H DOORS TO BE CLEAR ANODIZED FINISH, TYPICAL
 - 9 PAINTED STEEL DOORS TO BE DARK GREY TO MATCH SIGN
 - 10 VOLVO WOODGRAIN AS PER VOLVO SIGN PROGRAM
 - 11 KEYSHIP NAME SIGN AS PER VOLVO SIGN PROGRAM
 - 12 SERVICE SIGN AS PER SIGN PROGRAM

NOTES

It is the responsibility of the appropriate contractor to check and verify all dimensions on site and report all errors and omissions to the Architect.
 All contractors must comply with all pertinent codes and by-laws.
 Do not scale drawings.
 This drawing may not be used for construction until signed by the Architect.
 Copyright reserved.

LOCATION MAP



LEGAL DESCRIPTION

PART OF LOTS 17 AND 18 REGISTERED PLAN 23 CITY OF OTTAWA

no.	date	revision
3	28 JUL. 2022	ISSUED FOR REVIEW
2	26 MAY 2022	ISSUED FOR REVIEW
1	12 OCT. 2021	ISSUED FOR REVIEW

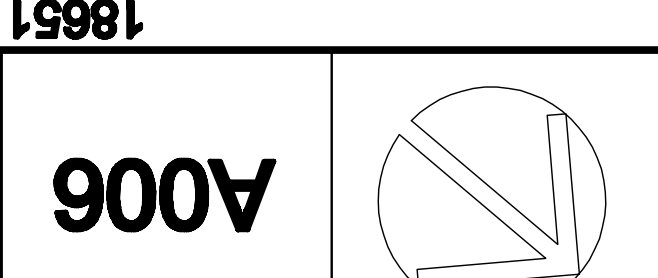
Stamp:

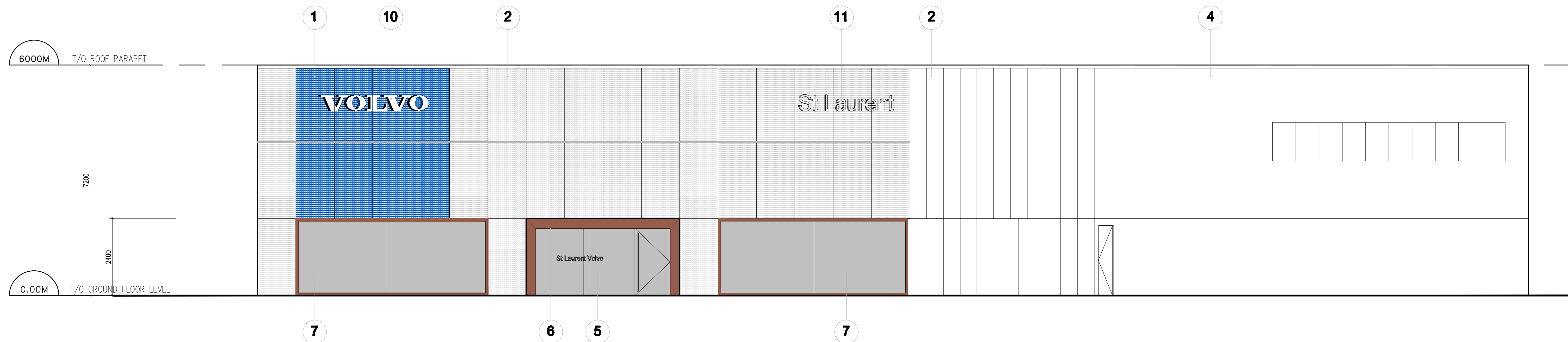
brian k. clark
 A.R.C.H.I.T.E.C.T.
 141 Catherine Street, Suite 102
 Ottawa, Ontario K2P 1C3
 TEL: (613) 238-7412 • FAX: 238-1799
 Email: bcklar@architect.onalbn.com

Project: 1300 MICHAEL STREET
 VOLVO ST. LAURENT
 OTTAWA, ONTARIO

Drawing: SOUTH ELEVATION

Project No. 1811
 Drawn By: DC
 Scale: 1 : 75
 Date: 12-OCT-2021
 Drawing No. A006





WEST ELEVATION

1 WEST ELEVATION
A005 SCALE: 1:75

DRAWING NOTES

- ① BLUE TINTED THERMAL UNITS
- ② SOLERA CURTAINWALL SYSTEM C/W SEMI OPAQUE THERMAL UNITS
- ③ ACM PANELS, SILVER METALLIC FINISH, TYPICAL
- ④ PREFINISHED RIBBED METAL SIDING, DARK GREY
- ⑤ SHOWROOM ENTRANCE AND VESTIBULE, PRODEMA WOOD GRAN PANELS
- ⑥ CONTINUOUS LED STRIP LIGHTING AROUND PERIMETER
- ⑦ SHOP WINDOWS, CLEAR THERMAL UNITS C/W BUTT SILICONE JOINTS
- ⑧ ALL ALUMINUM ENTRANCES AND O/H DOORS TO BE CLEAR ANODIZED FINISH, TYPICAL
- ⑨ PAINTED STEEL DOORS TO BE DARK GREY TO MATCH SIDING
- ⑩ VOLVO WOODMARK AS PER VOLVO SIGN PROGRAM
- ⑪ DEALERSHIP NAME SIGN AS PER VOLVO SIGN PROGRAM
- ⑫ SERVICE SIGN AS PER SIGN PROGRAM

NOTES

It is the responsibility of the appropriate contractor to check and verify all dimensions on site and report all errors and or omissions to the Architect.
All contractors must comply with all pertinent codes and by-laws.
Do not scale drawings.
This drawing may not be used for construction until signed by the Architect.
Copyright reserved.

LOCATION MAP



LEGAL DESCRIPTION

PART OF LOTS 17 AND 18
REGISTERED PLAN 23
CITY OF OTTAWA

no.	date	revision
3	28 JUL. 2022	ISSUED FOR REVIEW
2	26 MAY 2022	ISSUED FOR REVIEW
1	12 OCT. 2021	ISSUED FOR REVIEW

no.	date	revision

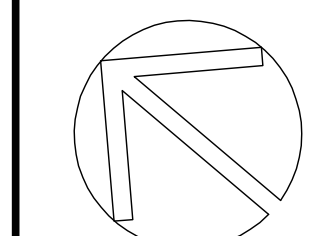
brian k. clark
ARCHITECT
141 Catherine Street, Suite 102
Ottawa, Ontario K2P 1C3
TEL: (613) 238-7412 · FAX: 238-1799
Email: bkclarkarchitect@on.aibn.com

Project:
VOLVO ST. LAURENT
1300 MICHAEL STREET
OTTAWA, ONTARIO

OTTAWA ONTARIO

Drawing:
WEST ELEVATION

Project No.	Drawn By	Scale:
1811	DC	1 : 75
North Arrow:	Date:	Drawing No.
	12-OCT-2021	A005



A005