

15 August 2020 10:17 AM

SCHEDULE		
PART	BLOCK	PIN
1	PART OF 14	PART OF 04508-0151
2	PART OF 2	4M-1566
3	PART OF 1	PART OF 04508-0139
4	PART OF 1	PART OF 04508-0138
5	PART OF LOT 3	CONCESSION 1
6	PART OF 14	4M-1566
7	PART OF 14	PART OF 04508-0151
8		
9		
10	PART OF 2	4M-1566
11		
12	PART OF LOT 3	CONCESSION 1
13		
14	PART OF 1	4M-1566
15		

REQUIRE THIS PLAN TO BE DEPOSITED UNDER THE LAND TILES ACT.
 DATE: Aug 14/20
 PLAN 4R-28887

RECEIVED AND DEPOSITED
 DATE: August 14, 2020
 "J. Hanson"
 REPRESENTATIVE FOR THE LAND REGISTRAR FOR THE LAND DIVISION OF OTTAWA-CARLETON (L)

PLAN OF SURVEY OF
PART OF BLOCKS 1, 2 AND 14
REGISTERED PLAN 4M-1566
 AND
PART OF LOT 3
CONCESSION 1
TOWNSHIP OF HUNTLEY
CITY OF OTTAWA
 Scale 1:500

METRIC CONVERSION
 DISTANCES AND COORDINATES SHOWN ON THIS PLAN ARE IN METRES AND CAN BE CONVERTED TO FEET BY DIVIDING BY 0.3048

GRID SCALE CONVERSION
 DISTANCES ARE GROUND AND CAN BE CONVERTED TO GRID BY MULTIPLYING BY THE COMBINED SCALE FACTOR OF 0.99995.

BEARING NOTE
 BEARINGS HEREON ARE GRID BEARINGS DERIVED FROM THE CAN-NET VRS NETWORK AND ARE REFERRED TO THE CENTRAL MERIDIAN 76° 30' WEST LONGITUDE OF THE 45° 00' NORTH ONTARIO COORDINATE SYSTEM, NAD83 (ORIGINAL) ZONE 9.

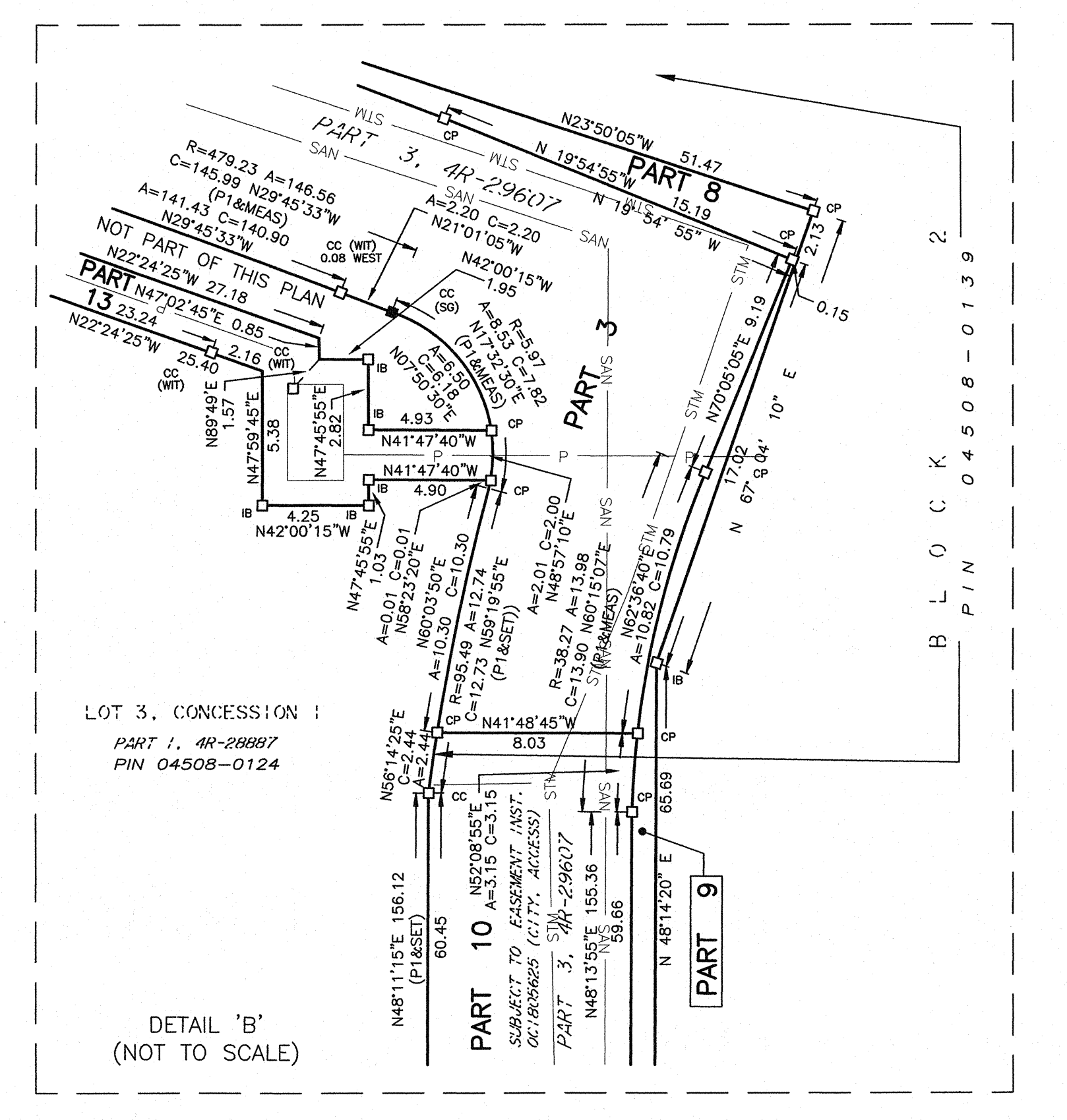
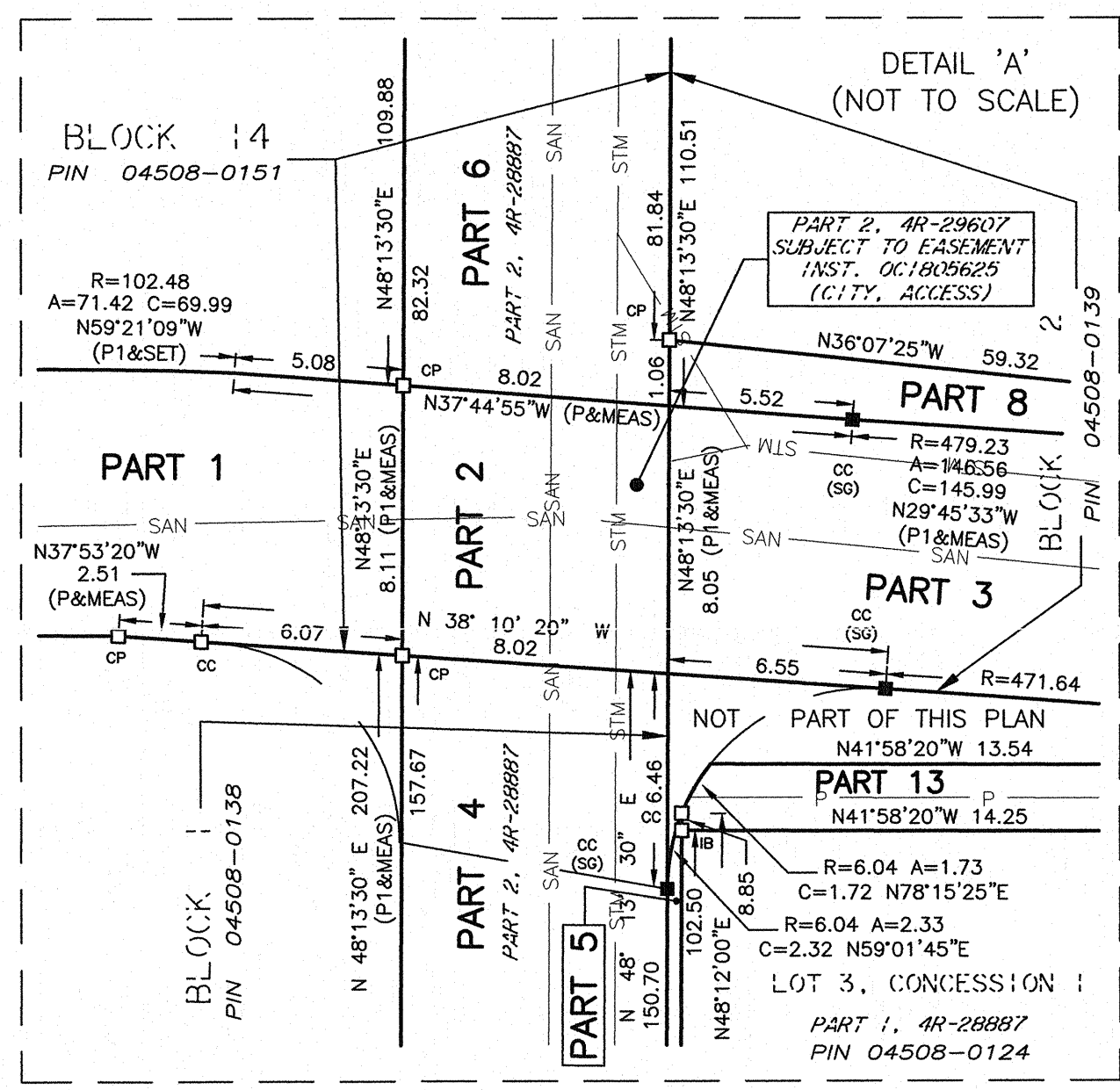
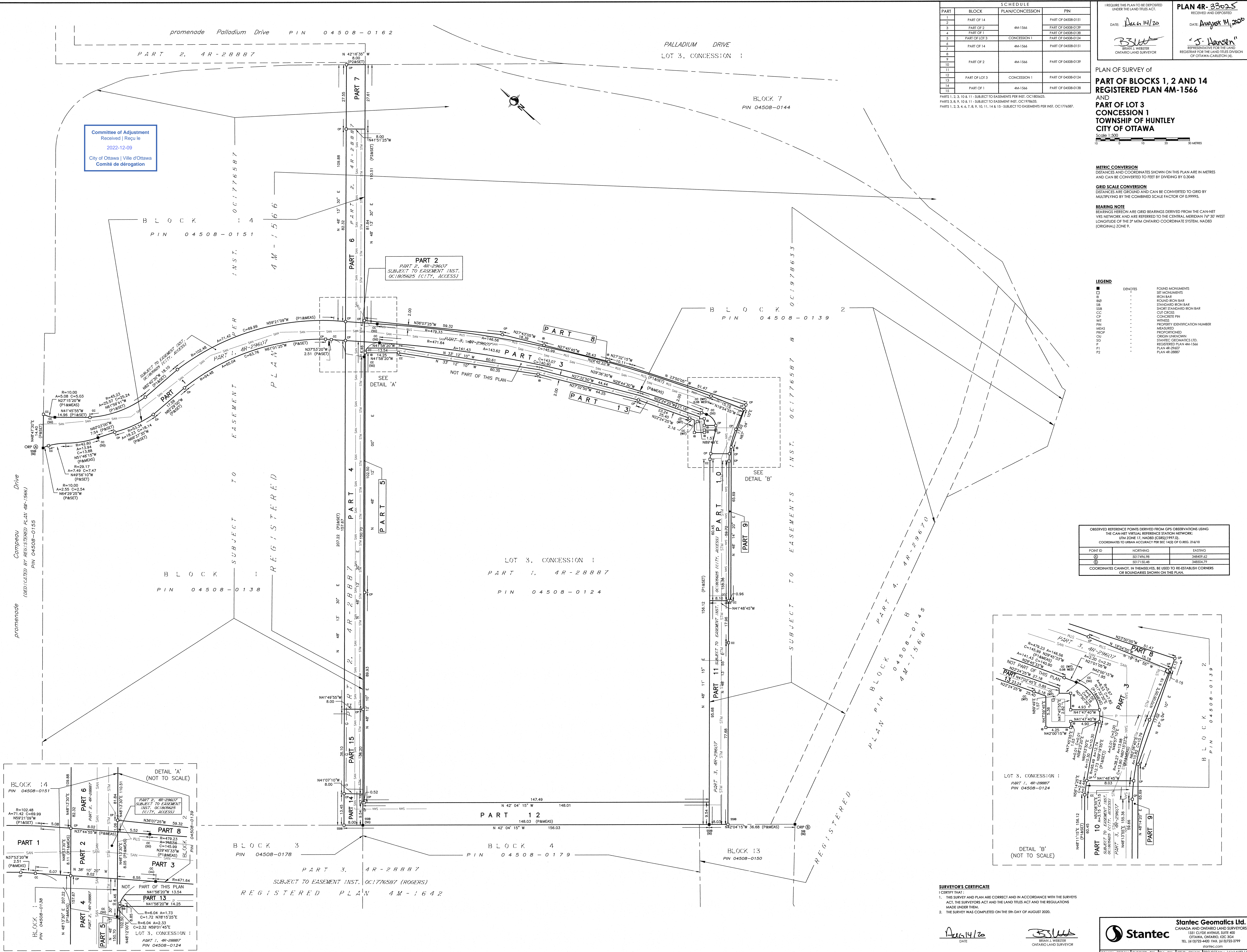
LEGEND

SYMBOL	DESCRIPTION	FOUND MONUMENTS
■	DEWYTES	SET MONUMENTS
□	IRON BAR	ROUND IRON BAR
○	ROUND IRON BAR	STANDARD IRON BAR
○	SHORT STANDARD IRON BAR	CUT CROSS
○	CONCRETE PIN	PROPERTY IDENTIFICATION NUMBER
○	WITNESS	MEASURED
○	PROPOSED	PROPORTIONED
○	ORIGIN UNKNOWN	STATISTICS GEOMATICS LTD.
○	REGISTERED PLAN 4M-1566	PLAN 4R-2887
○	PLAN 4R-2887	PLAN 4R-2887
○	PLAN 4R-2887	

OBSERVED REFERENCE POINTS DERIVED FROM GPS OBSERVATIONS USING THE CAN-NET VIRTUAL REFERENCE STATION NETWORK: UTM ZONE 17, NAD83 (CSRS) (1997.02). COORDINATES TO URBAN ACCURACY PER SEC 14(2) OF O.R.G. 216/10

POINT ID	NORTHING	EASTING
①	5017494.78	348407.62
②	5017502.48	348524.77

COORDINATES CANNOT, IN THEMSELVES, BE USED TO RE-ESTABLISH CORNERS OR BOUNDARIES SHOWN ON THIS PLAN.

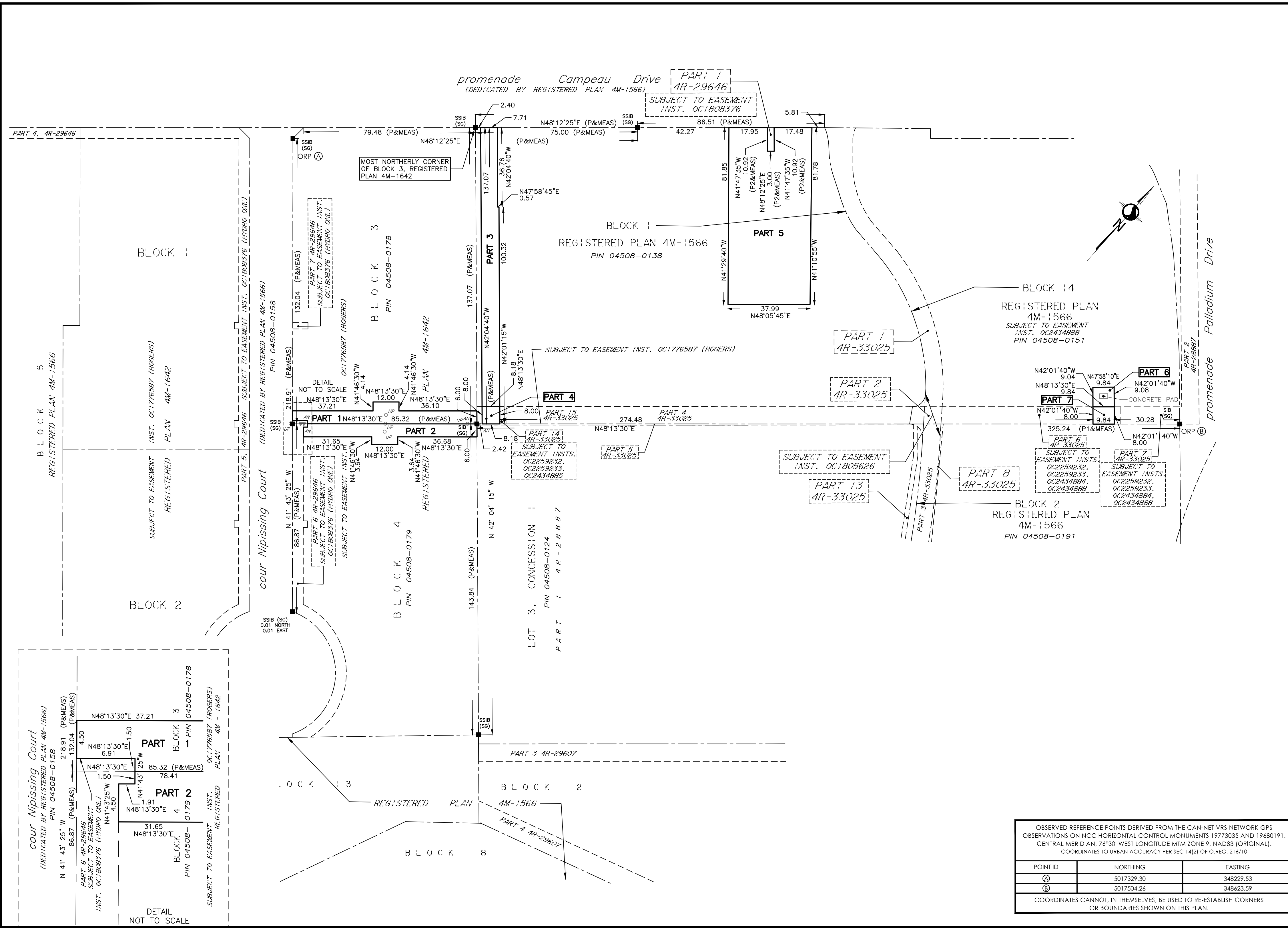


SURVEYOR'S CERTIFICATE
 I CERTIFY THAT:
 1. THIS SURVEY AND PLAN ARE CORRECT AND IN ACCORDANCE WITH THE SURVEY ACT, THE SURVEYORS ACT AND THE LAND TILES ACT AND THE REGULATIONS MADE UNDER THEM.
 2. THE SURVEY WAS COMPLETED ON THE 5th DAY OF AUGUST 2020.

DATE: Aug 14/20
 SURVEYOR: BRAD J. WEBSTER
 ONTARIO LAND SURVEYOR

Stantec
 CANADA AND ONTARIO LAND SURVEYORS
 131 CLOVE AVENUE, SUITE 400
 OTTAWA, ONTARIO, K2C 3K4
 TEL: (613) 722-4401 FAX: (613) 722-2999
 www.stantec.com

DRAWN: CECAN CHECKED: BW FILE: CRAW PROJECT NO.: 1616148314



I REQUIRE THIS PLAN TO BE DEPOSITED UNDER THE LAND TITLES ACT.

DATE: _____

BRIAN J. WEBSTER
ONTARIO LAND SURVEYOR

PLAN 4R- _____
RECEIVED AND DEPOSITED

DATE: _____

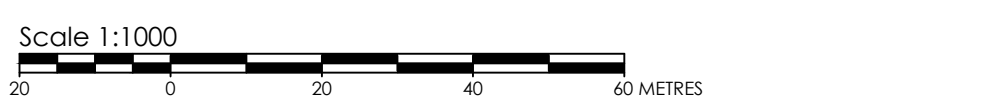
REPRESENTATIVE FOR THE LAND REGISTRAR FOR THE LAND TITLES DIVISION OF OTTAWA-CARLETON (4).

SCHEDULE

PART	LOT	PLAN	PIN
1	BLOCK 3	4M-1642	PART OF 04508-0178
2	BLOCK 4	4M-1642	PART OF 04508-0179
3	BLOCK 1	4M-1566	PART OF 04508-0138
4			
5	BLOCK 14	4M-1566	PART OF 04508-0151
6			
7			

PARTS 1, 2, 3, 4, 5, 6 & 7 - SUBJECT TO EASEMENT INST. OC1776587 (ROGERS).
 PART 4 - SUBJECT TO EASEMENT INST. OC2259232, OC2259233 & OC2434885.
 PARTS 6 AND 7 - SUBJECT TO EASEMENT INST. OC2434888.
 PART 7 - SUBJECT TO EASEMENT INST. OC2259232, OC2259233 & OC2434884.

PLAN OF SURVEY OF
**PART OF BLOCKS 1 AND 14
 REGISTERED PLAN 4M-1566
 AND PART OF BLOCKS 3 AND 4
 REGISTERED PLAN 4M-1642
 CITY OF OTTAWA**



METRIC CONVERSION
 DISTANCES AND COORDINATES SHOWN ON THIS PLAN ARE IN METRES AND CAN BE CONVERTED TO FEET BY DIVIDING BY 0.3048

GRID SCALE CONVERSION
 DISTANCES ARE GROUND AND CAN BE CONVERTED TO GRID BY MULTIPLYING BY THE COMBINED SCALE FACTOR OF 0.99995.

BEARING NOTE
 BEARINGS ARE GRID, DERIVED FROM THE CAN-NET VRS NETWORK OBSERVATIONS ON NCC HORIZONTAL CONTROL MONUMENTS 19773035 AND 19680191, CENTRAL MERIDIAN, 76°30' WEST LONGITUDE MTM ZONE 9, NAD83 (ORIGINAL).

19773035 N:5006060.42 E:324888.04
 19680191 N:5033564.26 E:388064.94

LEGEND

SYMBOL	DENOTES	FOUND MONUMENTS
■	DENOTES	FOUND MONUMENTS
□	SET MONUMENTS	SET MONUMENTS
IB	IRON BAR	IRON BAR
IBØ	ROUND IRON BAR	ROUND IRON BAR
SIB	STANDARD IRON BAR	STANDARD IRON BAR
SSIB	SHORT STANDARD IRON BAR	SHORT STANDARD IRON BAR
CC	CUT CROSS	CUT CROSS
CP	CONCRETE PIN	CONCRETE PIN
WIT	WITNESS	WITNESS
PIN	IDENTIFICATION NUMBER	IDENTIFICATION NUMBER
MEAS	MEASURED	MEASURED
PROP	PROPORTIONED	PROPORTIONED
OU	ORIGIN UNKNOWN	ORIGIN UNKNOWN
STANTEC	STANTEC GEOMATICS LTD.	STANTEC GEOMATICS LTD.
AN	ANCHOR	ANCHOR
UP	UTILITY POLE	UTILITY POLE
P	REGISTERED PLAN 4M-1642	REGISTERED PLAN 4M-1642
P1	REGISTERED PLAN 4M-1566	REGISTERED PLAN 4M-1566
P2	PLAN 4R-29646	PLAN 4R-29646

SURVEYOR'S CERTIFICATE
 I CERTIFY THAT:
 1. THIS SURVEY AND PLAN ARE CORRECT AND IN ACCORDANCE WITH THE SURVEYS ACT, THE SURVEYORS ACT AND THE LAND TITLES ACT AND THE REGULATIONS MADE UNDER THEM.
 2. THE SURVEY WAS COMPLETED ON THE 28th DAY OF APRIL, 2021.

OBSERVED REFERENCE POINTS DERIVED FROM THE CAN-NET VRS NETWORK GPS OBSERVATIONS ON NCC HORIZONTAL CONTROL MONUMENTS 19773035 AND 19680191, CENTRAL MERIDIAN, 76°30' WEST LONGITUDE MTM ZONE 9, NAD83 (ORIGINAL), COORDINATES TO URBAN ACCURACY PER SEC 14(2) OF O.REG. 216/10

POINT ID	NORTHING	EASTING
Ⓐ	5017329.30	348229.53
Ⓑ	5017504.26	348623.59

COORDINATES CANNOT, IN THEMSELVES, BE USED TO RE-ESTABLISH CORNERS OR BOUNDARIES SHOWN ON THIS PLAN.

DATE: _____

BRIAN J. WEBSTER
ONTARIO LAND SURVEYOR

Stantec Geomatics Ltd.
 CANADA LANDS SURVEYORS
 ONTARIO LAND SURVEYORS
 1331 CLYDE AVENUE, SUITE 400
 OTTAWA, ONTARIO, K2C 3G4
 TEL. 613.722.4420
 stantec.com

DRAWN: NJ/TM CHECKED: BW PM: BW FIELD: AW/N PROJECT No.: 161612445-1014

3095-3105-3115 Palladium Dr
Block 14, 4M-1566
(1000019871 Ontario Inc "Royal")

3015-3025 Palladium Dr
Part of Block 2, 4M-1566
Tim Horton's and McDonald's
(KWC)

3075 Palladium Dr
Block 1, 4M-1566
(WOLH)

3035 Palladium Dr
Part of Block 2, 4M-1566
(Blinds To Go)

101 Nipissing Ct
Block 3, 4M-1642
(WOLH)

3065 Palladium Dr
Part 1, 4R-28887
(Cabela's)

3045 Palladium Dr
Part of Block 2, 4M-1566
(Structube)

201 Nipissing Ct
Block 4, 4M-1642
(WOLH)

3055 Palladium Dr
Part of Block 2, 4M-1566
Princess Auto
(KWC)

REQUESTED EASEMENTS:

Easement for Hydro on Parts 1 and 2 of draft reference plan.
---runs across 101 and 201 Nipissing (WOLH)
---benefits 3065 Palladium (Cabela's)

Easement for Access on Part 3 of draft reference plan.
---runs across 3075 Palladium (WOLH)
---benefits 3095-3105-3115 Palladium ("Royal"), 3015-3025 & 3055 Palladium (KWC), 3035 Palladium (BTG), 3045 Palladium (Structube) and 3065 Palladium (Cabela's)

Easement of Hydro on Parts 5 and 6 of draft reference plan.
---runs across 3095-3105-3115 Palladium ("Royal")
---benefits 3015-3025 Palladium (KWC) and 3035 Palladium (BTG)

