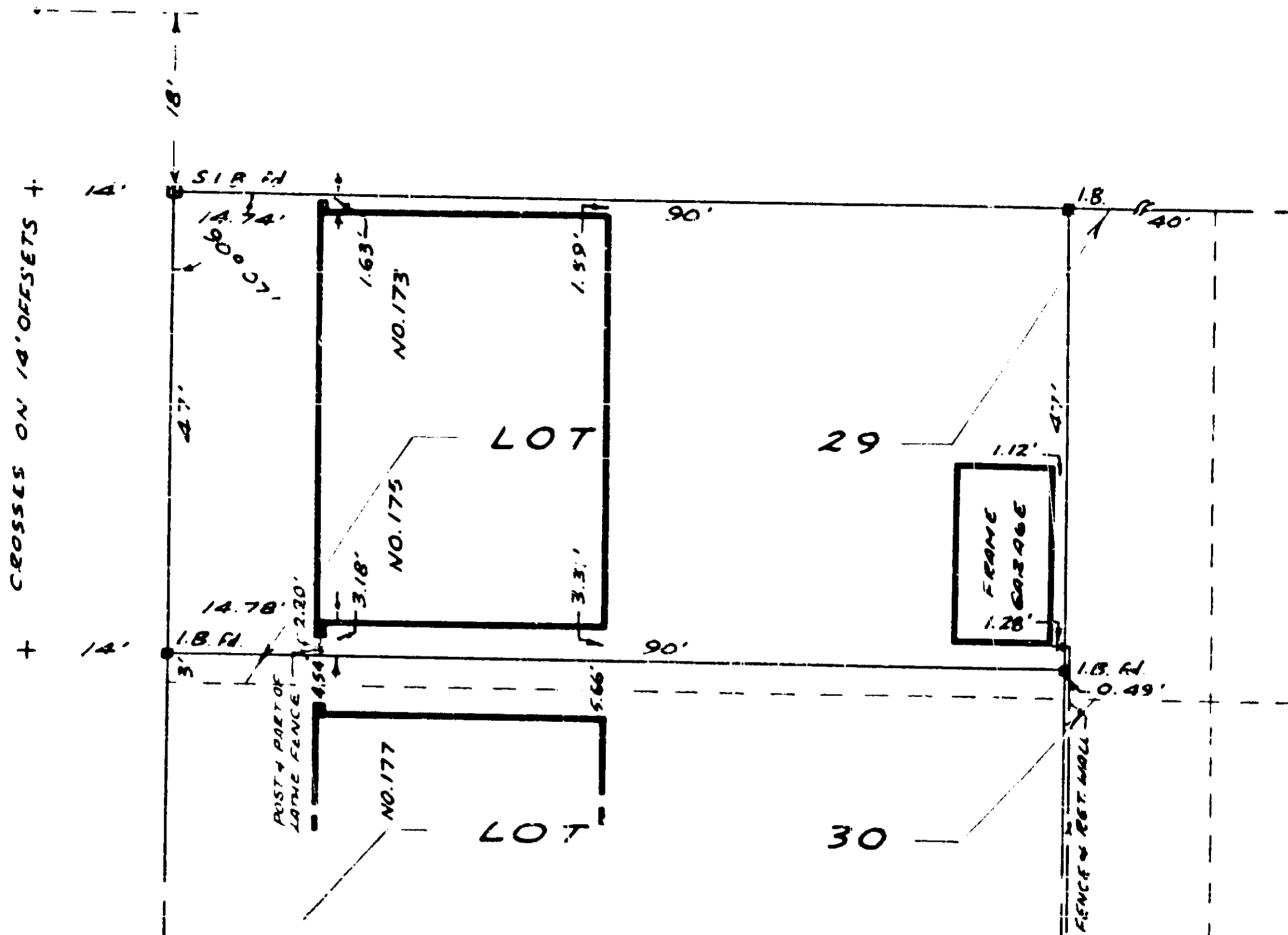


BREEZEHILL AVE.

GLADSTONE AVE.

NAIL IN ASPHALT



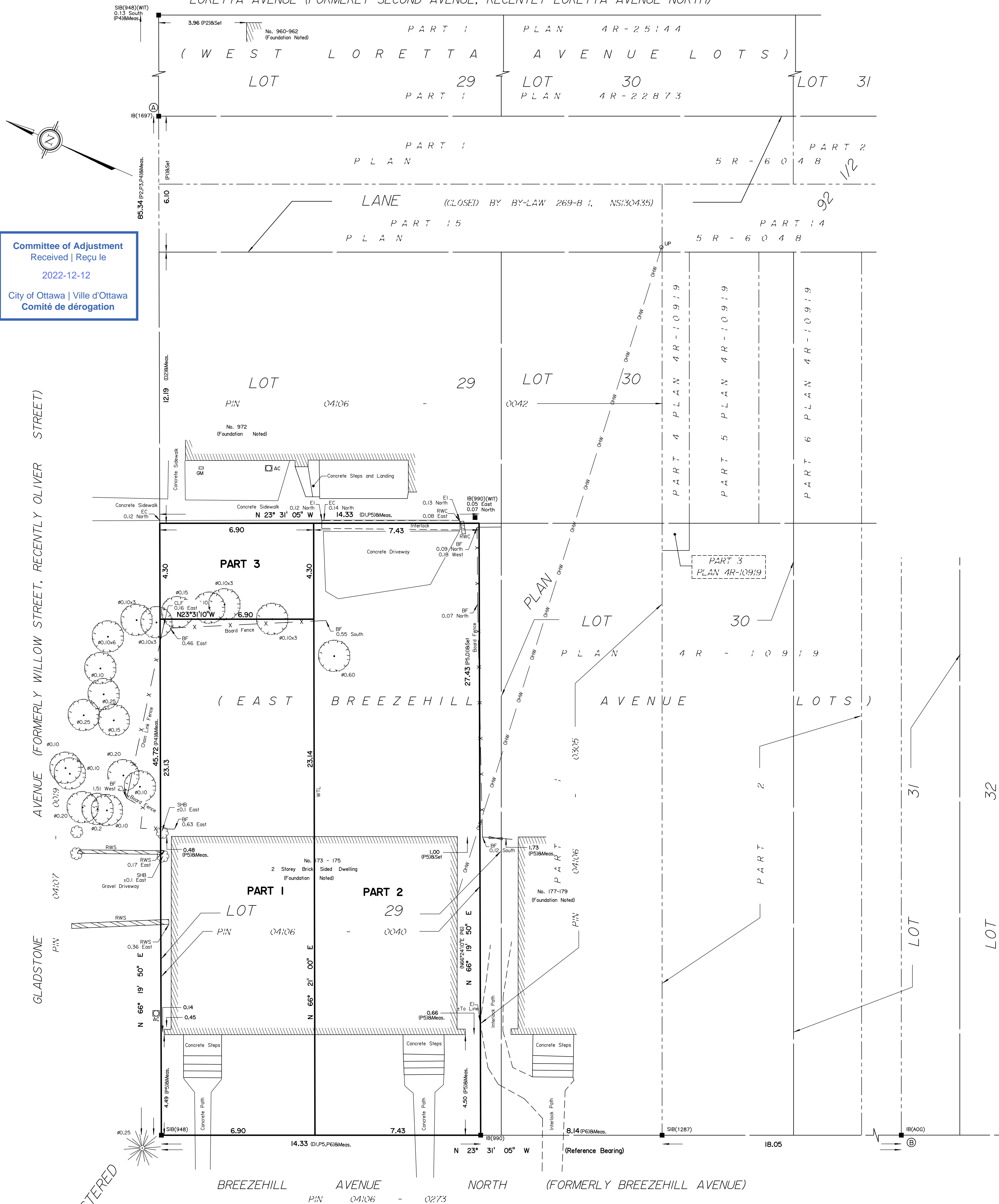
I.B. - IRON BAR 24" X 5/8" Ø

3111/64

F99

<b>S. E. &amp; H. R. Farley</b> Professional Engineers — Ontario Land Surveyors OTTAWA, ONTARIO	
PART OF LOT 29 E. BREEZEHILL AVE. PLAN 92½ OTTAWA	
Scale: 1" = 20'	H. R. Farley O.L.S.
Date: SEPT. 27th/64	

LORETTA AVENUE (FORMERLY SECOND AVENUE, RECENTLY LORETTA AVENUE NORTH)



Committee of Adjustment  
Received | Reçu le  
2022-12-12  
City of Ottawa | Ville d'Ottawa  
Comité de dérogation

SCHEDULE				
AREA (Sq.m.)	PART	LOT	CONCESSION	PIN
159.6	1	PART OF 29	92-1/2	ALL OF 04106-0040
203.9	2	PART OF 29	92-1/2	ALL OF 04106-0040
29.7	3	PART OF 29	92-1/2	ALL OF 04106-0040

PLAN OF SURVEY OF  
PART OF LOT 29  
(EAST OF BREEZEHILL AVENUE)  
REGISTERED PLAN 92 1/2  
CITY OF OTTAWA  
Surveyed by Annis, O'Sullivan, Vollebakk Ltd.



Metric  
DISTANCES AND COORDINATES SHOWN ON THIS PLAN  
ARE IN METRES AND CAN BE CONVERTED TO FEET BY  
DIVIDING BY 0.3048.

Surveyor's Certificate  
I CERTIFY THAT:  
1. This survey and plan are correct and in accordance with the Surveys Act, the Surveyors Act and the Land Titles Act and the regulations made under them.  
2. The survey was completed on the --- day of ---, 2022.

Date: \_\_\_\_\_  
Stefan Bazar  
Ontario Land Surveyor

This plan relates to AOLS Plan Submission form number: V-31701

Notes & Legend

□	Denotes	Survey Monument Planted
■		Survey Monument Found
SSIB		Standard Iron Bar
SSIB		Short Standard Iron Bar
IB		Iron Bar
(WIT)		Witness
(AOG)		Annis, O'Sullivan, Vollebakk Ltd.
Meas.		Measured
(P1)		Registered Plan 92 1/2
(P2)		Plan By (AOG) Dated May 27, 1998
(P3)		Plan 5R-5716
(P4)		Plan 4R-22873
(P5)		Plan By (647) Dated September 8, 1964
(P6)		Plan 4R-10919
(D1)		Instrument N461572
(D2)		CR608132
RWC		Concrete Retaining Wall
RWS		Stone Retaining Wall
BF		Board Fence
CLF		Chain Link Fence
EI		Edge of Interlock
WTL		Centreline of Wall ± to Line
— OHW —		Overhead Wires
GM		Gas Meter
∩		Gate

Distances shown on this plan are ground distances and can be converted to grid distances by multiplying by the combined scale factor of 0.999935.

Bearings are grid, derived from the easterly limit of Breezehill Avenue North, shown to be N23°31'05"W on Plan 5R- 5716 on reference points A and B, shown hereon, having a bearing of N24°50'21"W and are referenced to Specified Control Points 01919680005 and 01919680105, MTM Zone 9 ( 76°30' West Longitude ) NAD-83 (original).

Coordinates are derived from Can-Net 2016 Real Time Network GPS observations referenced to Specified Control Points 01919680005 and 01919680105, MTM Zone 9 (76°30' West Longitude) NAD-83 (original).

Coordinate values are to urban accuracy in accordance with O. Reg. 216/10.

.01919680005	Northing	5027191.26	Easting	361496.76
.01919680105	Northing	5024915.16	Easting	373971.65
.Point A	Northing	5029535.65	Easting	366155.50
.Point B	Northing	5029480.16	Easting	366129.82

Caution: Coordinates cannot, in themselves, be used to re-establish corners or boundaries shown on this plan.

**ANNIS, O'SULLIVAN, VOLLEBEKK LTD.**  
14 Concourse Gate, Suite 500  
Nepean, Ont. K2E 7S6  
Phone: (613) 727-0850 / Fax: (613) 727-1079  
Email: nepean@annisvl.com

Ontario Land Surveyors Job No. 22817-22, Sgrh. P1129, P192.5, R. D3

REGISTERED

Y:\2022\22817-22\_Sgrh\_Whithead\_173-175 Breezehill Avenue North\_P1129\_P192.5 R. D3.dwg