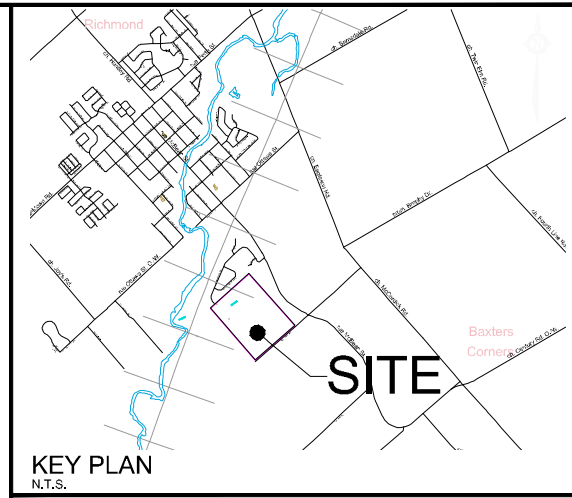
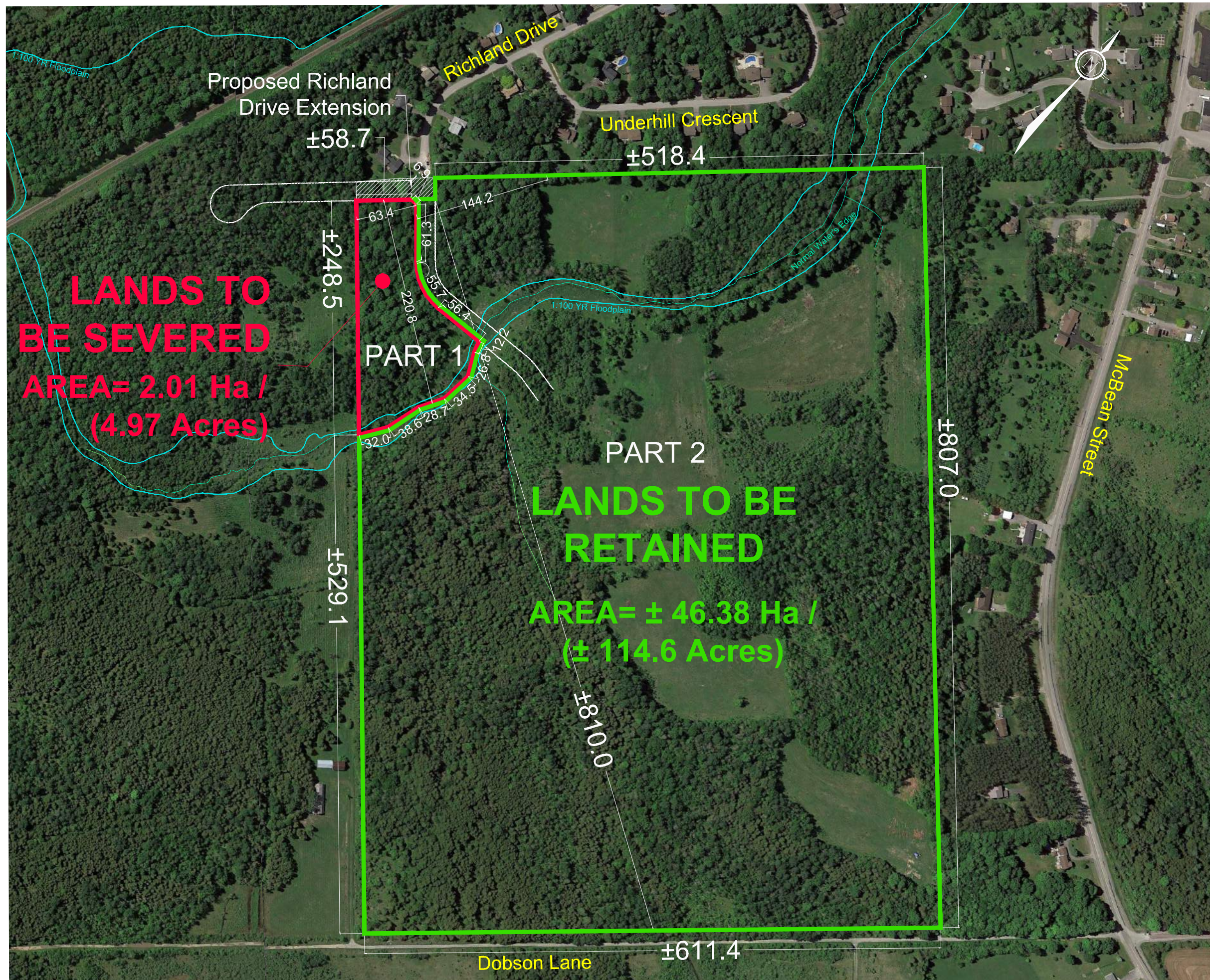


M:\2020\120152\CAD\Planning\Figures\120152-SEV.dwg, 6305, Oct 27, 2022 - 4:28pm, wslloss

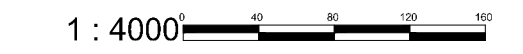


# CONSENT APPLICATION

6305 DOBSON LANE

SOUTH HALF LOT 23,  
CONCESSION 2  
GEOGRAPHIC TOWNSHIP OF GOULBOURN  
CITY OF OTTAWA  
**Committee of Adjustment**  
Received | Reçu le

2022-11-09  
City of Ottawa | Ville d'Ottawa  
Comité de dérogation

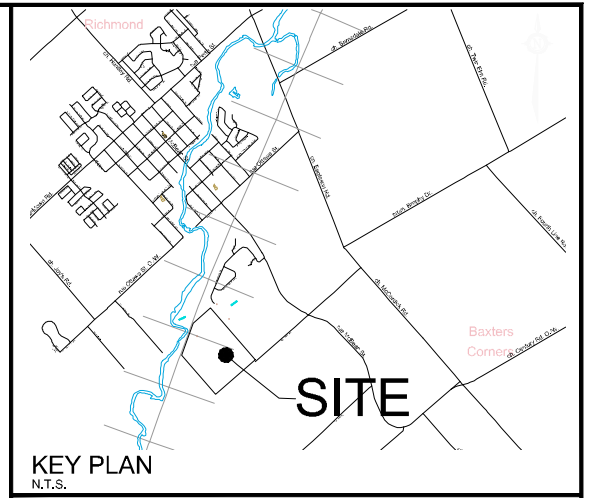
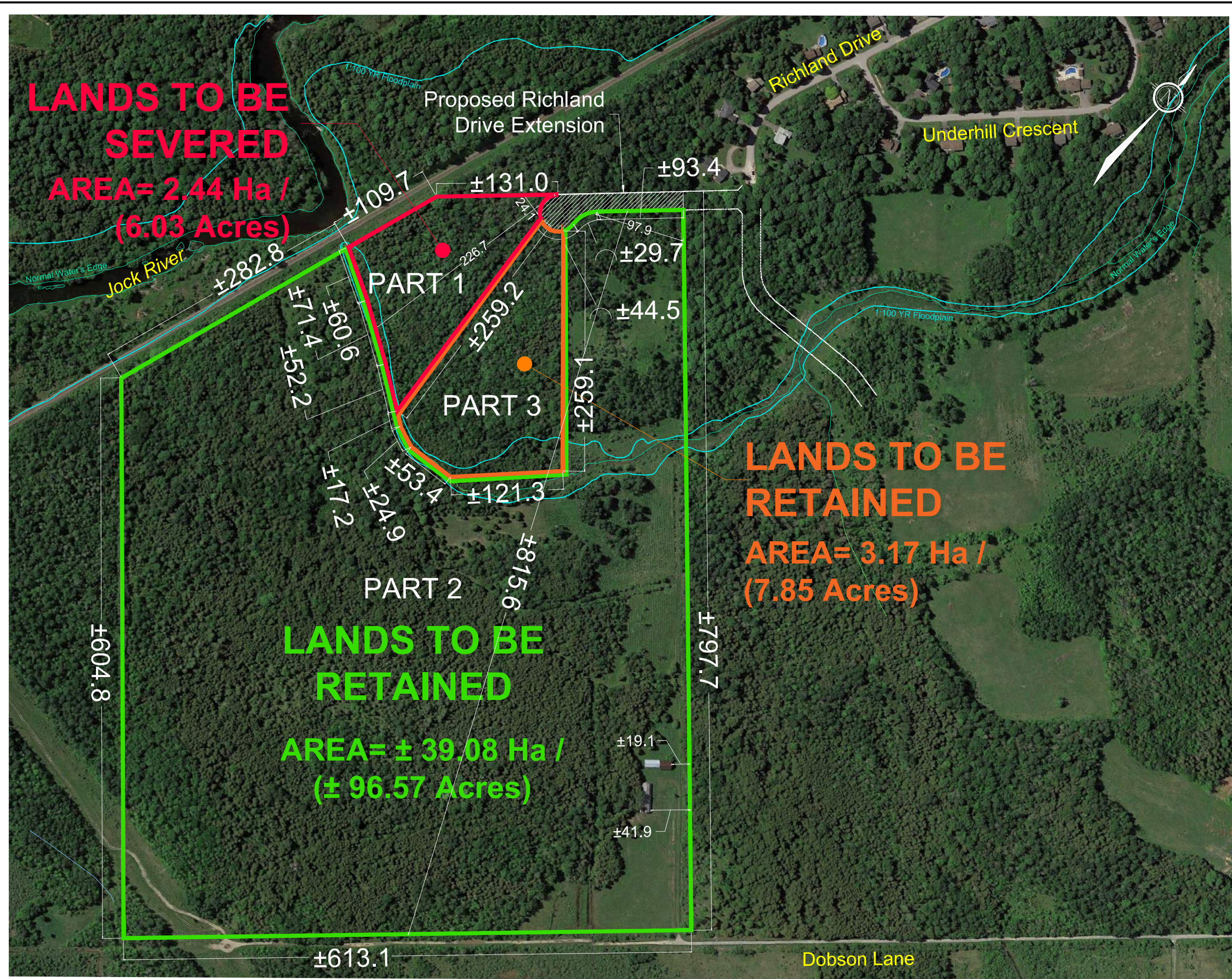


No.	REVISION	DATE	BY
2.	RE-ISSUED FOR CONSENT APPLICATION	NOV 01/22	AT
1.	ISSUED FOR CONSENT APPLICATION	MAY 06/22	TW

**NOVATECH**  
Engineers, Planners & Landscape Architects  
Suite 200, 240 Michael Cowpland Drive  
Ottawa, Ontario, Canada K2M 1P6  
Telephone: (613) 254-9643  
Facsimile: (613) 254-5857  
Website: www.novatech-eng.com

ISSUED  
NOVEMBER, 2022  
PROJECT No.  
120152  
DRAWING No.  
120152-SEV

M:\2020\120152\CAD\Planning\Figures\120152-SEV.dwg, 6335-1, Oct 27, 2022 - 4:28pm, wslloss



# CONSENT APPLICATION #1

6335 DOBSON LANE

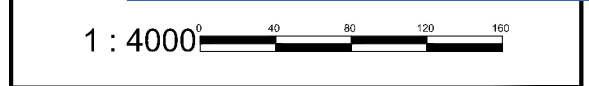
SOUTH HALF LOT 22,  
 CONCESSION 2  
 GEOGRAPHIC TOWNSHIP OF GOULBOURN  
 CITY OF OTTAWA

**Committee of Adjustment  
 Received | Reçu le**

**LEGEND**

- 1:100 Year Floodplain
- Normal Water's Edge (1:2000 Topography)

2022-11-09  
 City of Ottawa | Ville d'Ottawa  
 Comité de dérogation



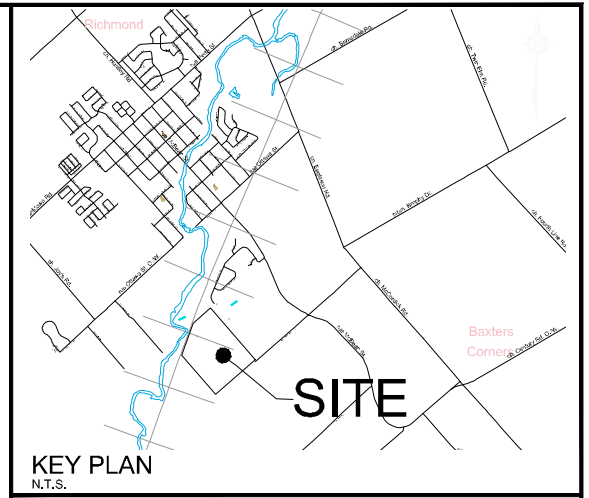
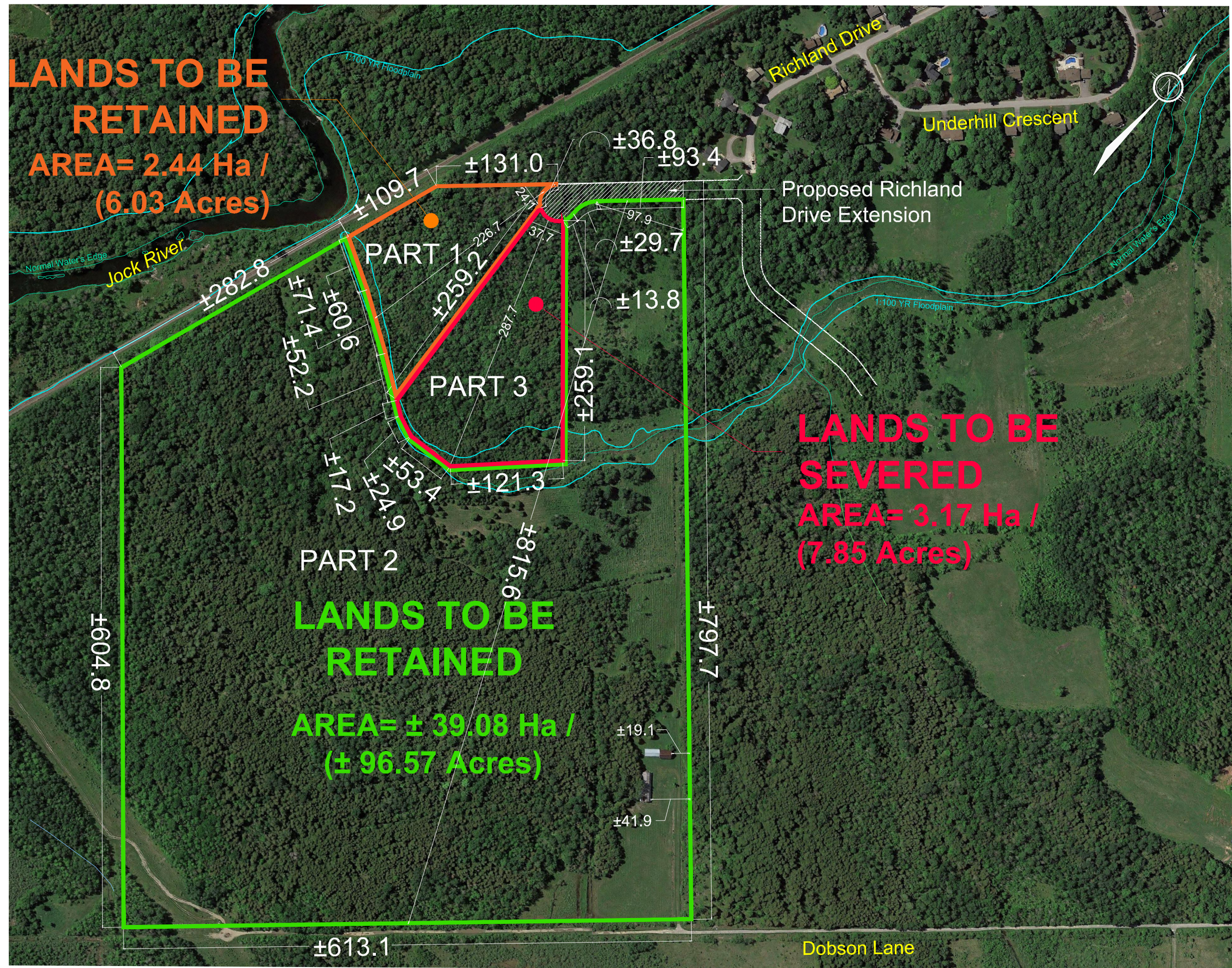
No.	REVISION	DATE	BY
2.	RE-ISSUED FOR CONSENT APPLICATION	NOV 01/22	AT
1.	ISSUED FOR CONSENT APPLICATION	MAY 06/22	TW

**NOVATECH**  
 Engineers, Planners & Landscape Architects  
 Suite 200, 240 Michael Cowpland Drive  
 Ottawa, Ontario, Canada K2M 1P6  
 Telephone: (613) 254-9643  
 Facsimile: (613) 254-5857  
 Website: www.novatech-eng.com

ISSUED  
 NOVEMBER, 2022

PROJECT No.  
 120152

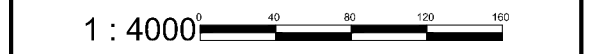
DRAWING No.  
 120152-SEV



# CONSENT APPLICATION #2

6335 DOBSON LANE

SOUTH HALF LOT 22,  
 CONCESSION 2  
 GEOGRAPHIC TOWNSHIP OF GOULBOURN  
 CITY OF OTTAWA  
**Committee of Adjustment**  
 Received | Reçu le  
 2022-11-09  
 City of Ottawa | Ville d'Ottawa  
 Comité de dérogation



No.	REVISION	DATE	BY
2.	RE-ISSUED FOR CONSENT APPLICATION	NOV 01/22	AT
1.	ISSUED FOR CONSENT APPLICATION	MAY 06/22	TW

**NOVATECH**  
 Engineers, Planners & Landscape Architects  
 Suite 200, 240 Michael Cowpland Drive  
 Ottawa, Ontario, Canada K2M 1P6  
 Telephone: (613) 254-9643  
 Facsimile: (613) 254-5857  
 Website: www.novatech-eng.com

ISSUED  
 NOVEMBER, 2022

PROJECT No.  
 120152

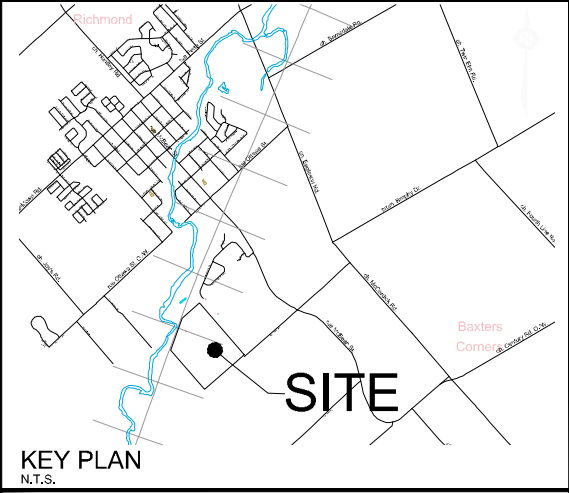
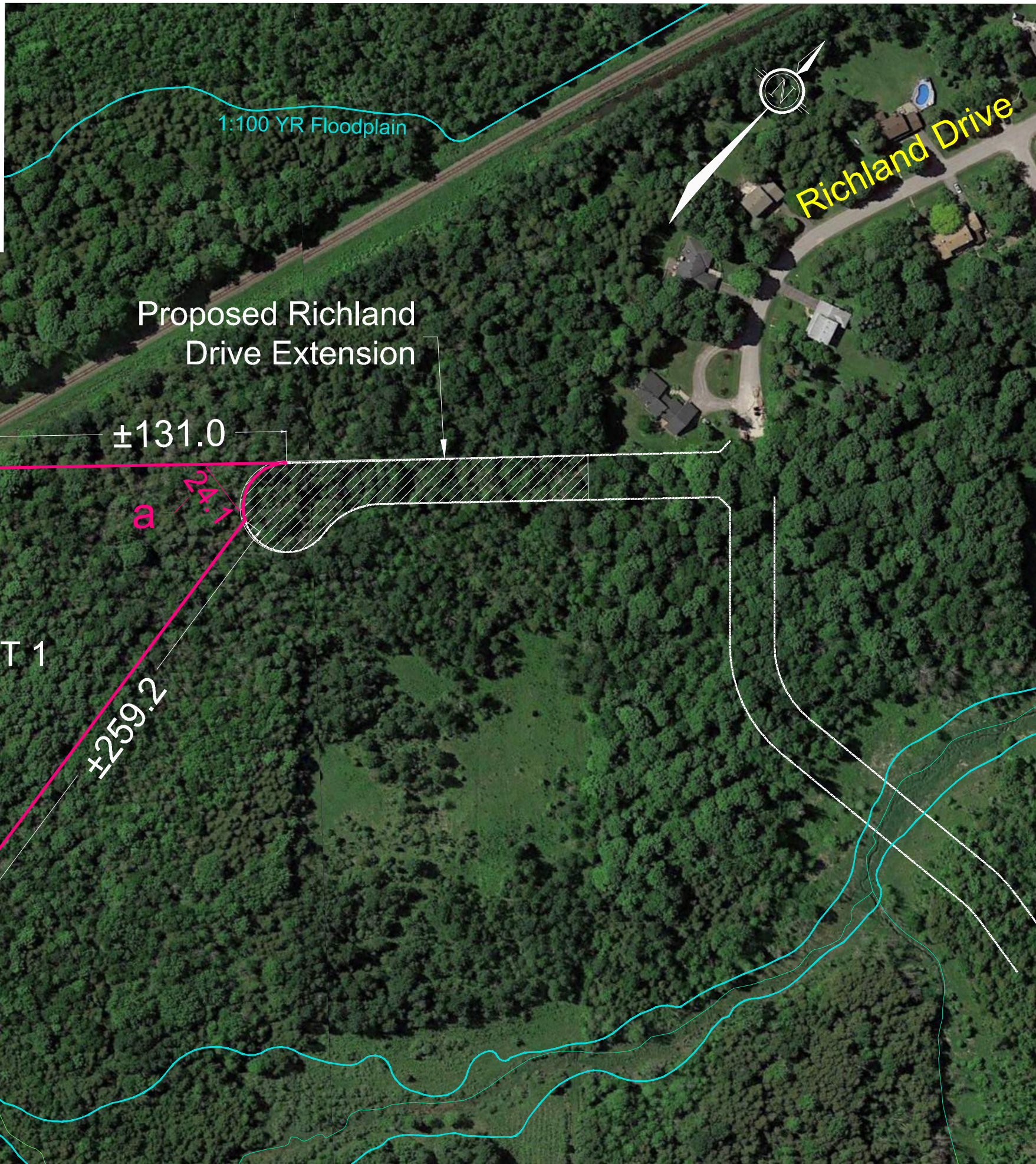
DRAWING No.  
 120152-SEV

M:\2020\120152\CAD\Planning\Figures\120152-SEV.dwg, 6335-2, Nov 01, 2022 - 10:20am, wslloss

**Minor Variance Application:**

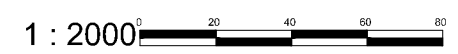
**Part 1:**

- a. To permit a reduced lot width of 24.1 meters; whereas the By-law requires a minimum lot width of 50 meters (Section 227(2), Table 227(a)).



**MINOR VARIANCE APPLICATION #1**  
6335 DOBSON LANE

SOUTH HALF LOT 22,  
CONCESSION 2  
GEOGRAPHIC TOWNSHIP OF GOULBOURN  
CITY OF OTTAWA  
**Committee of Adjustment**  
Received | Reçu le  
2022-11-09  
City of Ottawa | Ville d'Ottawa  
**Comité de dérogation**



No.	REVISION	DATE	BY
1.	ISSUED FOR MINOR VARIANCE APPLICATION	SEPT 16/22	AT

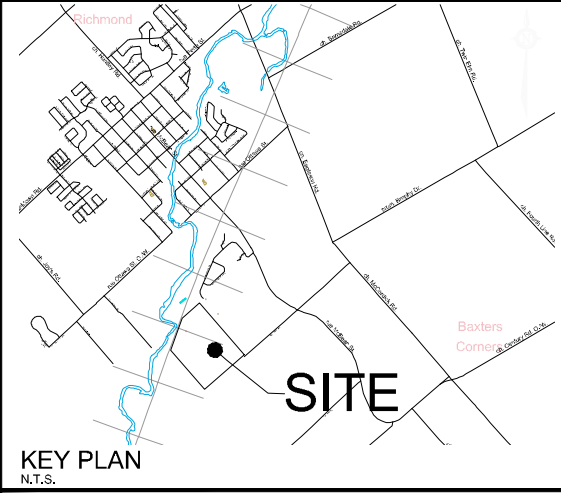
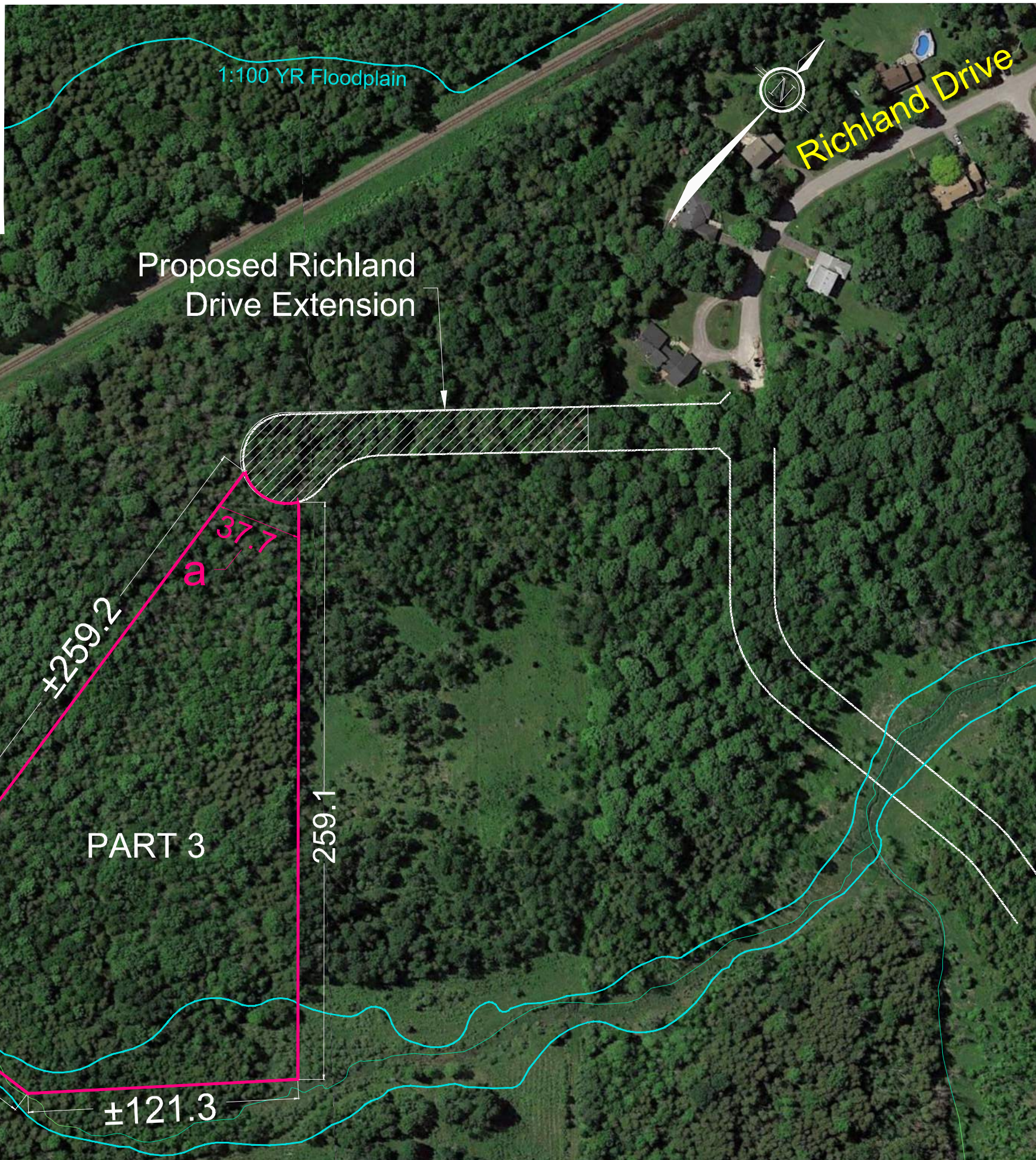
<p>Engineers, Planners &amp; Landscape Architects Suite 200, 240 Michael Cowpland Drive Ottawa, Ontario, Canada K2M 1P6 Telephone: (613) 254-9643 Facsimile: (613) 254-5857 Website: www.novatech-eng.com</p>	ISSUED
	SEPTEMBER, 2022
	PROJECT No. 120152
	DRAWING No. 120152-MV

M:\2020\120152\CAD\Planning\Figures\120152-MV.dwg, 6335-1, Sep 16, 2022 - 12:09pm, wslsoss

**Minor Variance Application:**

**Part 3:**

- b. To permit a reduced lot width of 37.7 meters; whereas the By-law requires a minimum lot width of 50 meters (Section 227(2), Table 227(a)).



**MINOR VARIANCE APPLICATION**

**#2**

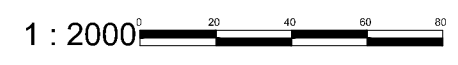
6335 DOBSON LANE

SOUTH HALF LOT 22,  
CONCESSION 2  
GEOGRAPHIC TOWNSHIP OF GOULBOURN

CITY OF OTTAWA  
**Committee of Adjustment**  
Received | Reçu le

2022-11-09

City of Ottawa | Ville d'Ottawa  
**Comité de dérogation**



No.	REVISION	DATE	BY
1.	ISSUED FOR MINOR VARIANCE APPLICATION	SEPT 16/22	AT

**NOVATECH**  
Engineers, Planners & Landscape Architects  
Suite 200, 240 Michael Cowpland Drive  
Ottawa, Ontario, Canada K2M 1P6  
Telephone: (613) 254-9643  
Facsimile: (613) 254-5857  
Website: www.novatech-eng.com

ISSUED  
SEPTEMBER, 2022  
PROJECT No.  
120152  
DRAWING No.  
120152-MV