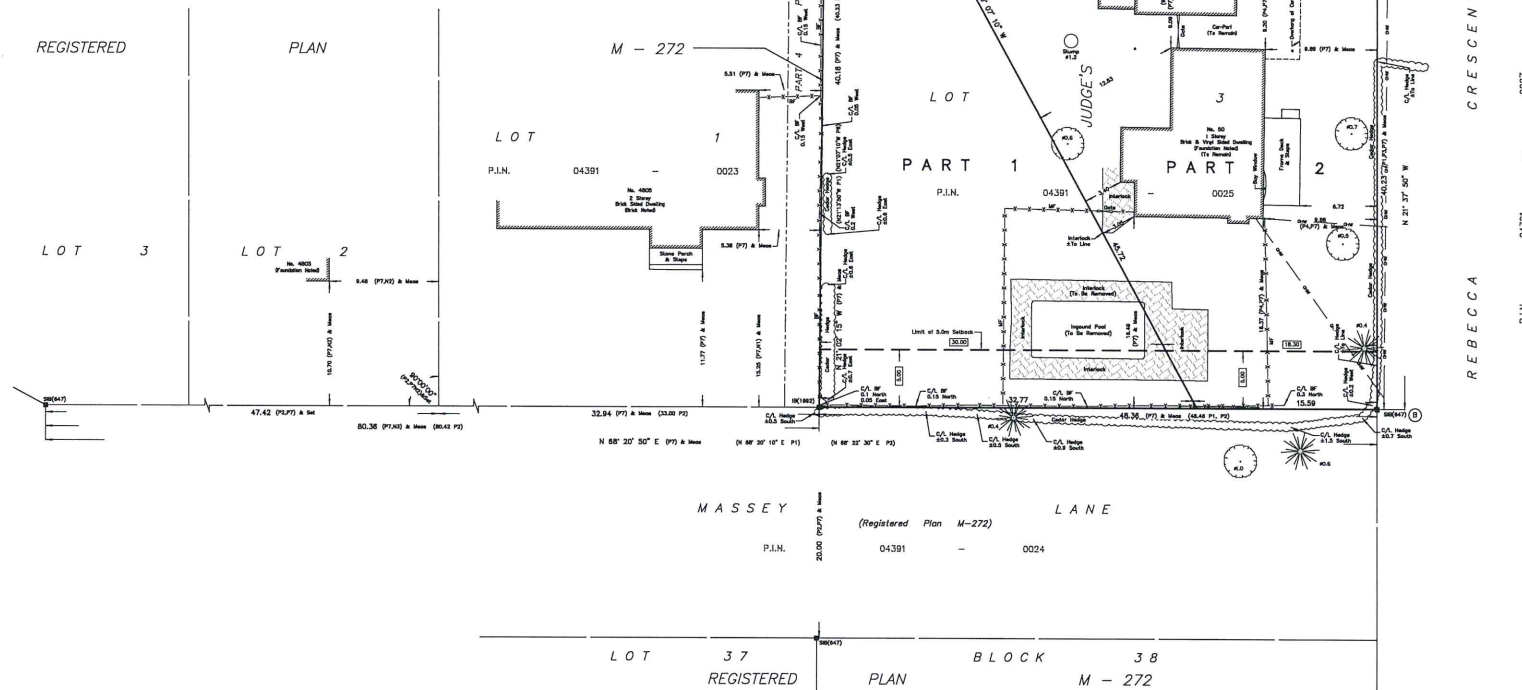


City of Ottawa | Ville d'Ottawa  
Comité de dérogation



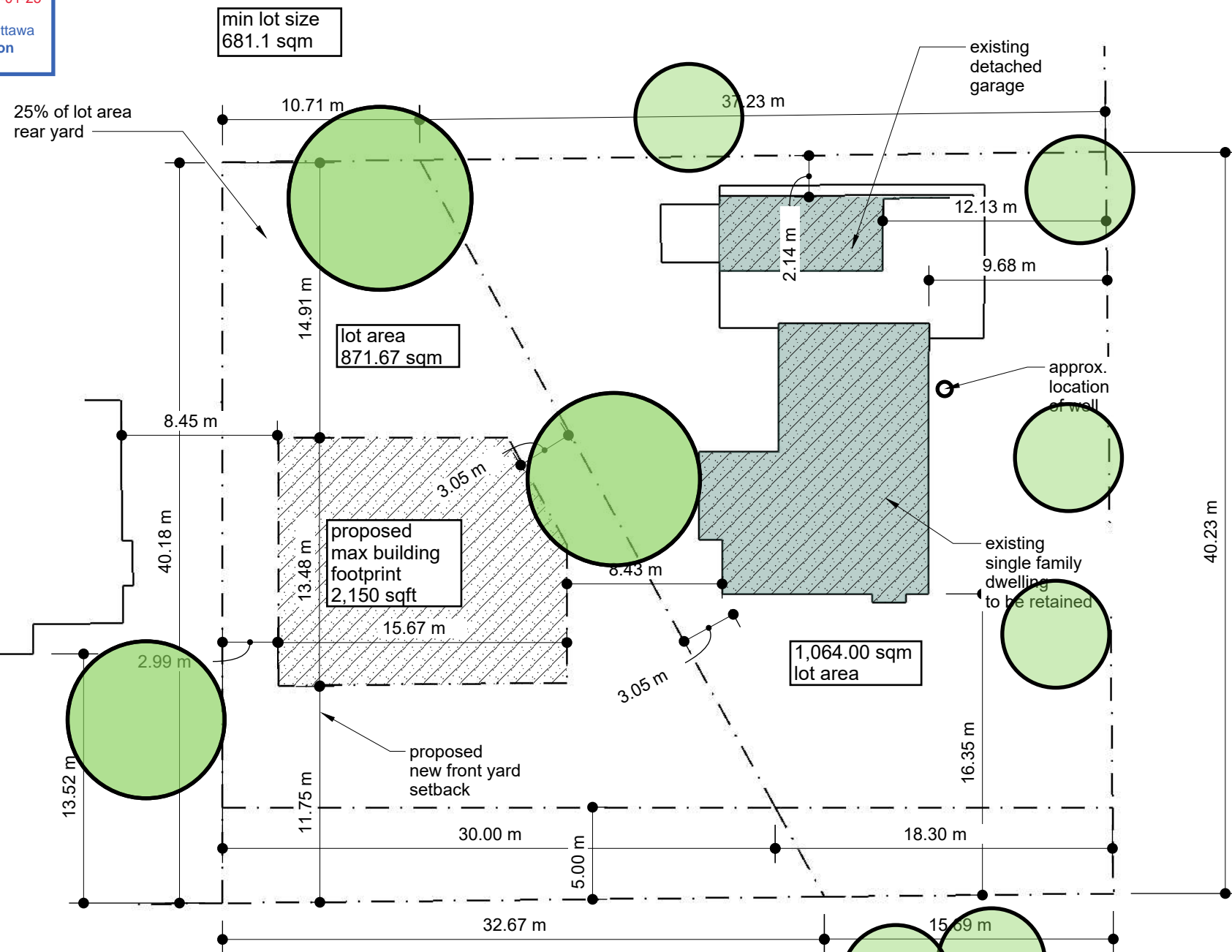
Unit 275, 30 COLONNADE ROAD, OTTAWA, ONTARIO K2E 7J6  
TEL: (613) 733-8226 E-MAIL: [ford@enr.com](mailto:ford@enr.com) [ford@bellnet.ca](mailto:ford@bellnet.ca)

Unit 275, 30 COLONNADE ROAD, OTTAWA, ONTARIO K2E 7J5  
TEL: (613) 722-8226 E-mail: fedecomm@bellnet.ca

TEL: (613) 727-8226 E-mail: [fsd1surveys@bellnet.ca](mailto:fsd1surveys@bellnet.ca)

Z:\2022\09-22\_50 Rebecca Cris\_rplan\Working\09-22\_50 Rebecca Cris\_Massey Lane\_LT 3 JPS2\_rplan\_D1.dwg

Committee of Adjustment  
Received | Reçu le  
Revised | Modifié le : 2023-01-25  
City of Ottawa | Ville d'Ottawa  
Comité de dérogation



THIS DOCUMENT  
CONTAINS  
CONFIDENTIAL AND  
PROPRIETARY  
INFORMATION THAT  
CANNOT  
BE REPRODUCED OR  
DIVULGED, IN WHOLE  
OR IN PART, WITHOUT  
WRITTEN  
AUTHORIZATION  
FROM Modulink

Copyright registration

**Modulink & Design**  
Planning & Design  
331 Osgoode Street  
Apt 3, Ottawa, Ont.  
K1N 1H2

CLIENT  
Scale  
1:300

PROJECT  
50 Rebecca  
PROJECT NO.  
2022  
ISSUE  
CJ  
DRAWN BY

January 25, 202  
3Proposed New

A.05





South East elevation



South West elevation



North East elevation



East elevation

50 Rebecca Crescent Elevation Existing Single Family