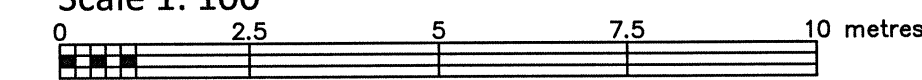


TOPOGRAPHIC PLAN OF SURVEY OF

**PART OF LOT 26
REGISTERED PLAN 301
CITY OF OTTAWA**

FARLEY, SMITH & DENIS SURVEYING LTD. 2022

Scale 1: 100



Metric Note

Distances on this plan are in metres and can be converted to feet by dividing by 0.3048.

Bearing Note

Bearings are astronomic and are referred to the westerly limit of Clover Street having a bearing of N6°20'10"W as shown on Plan 4R-23532.

Elevation Notes

- Elevations shown are geodetic and are referred to Geodetic Datum CGVD-1978. (City Monument No. G92, Index No. 366)
- It is the responsibility of the user of this information to verify that the job benchmark has not been altered or disturbed and that its relative elevation and description agrees with the information shown on this drawing.

Utility Notes

- This drawing cannot be accepted as acknowledging all of the utilities and it will be the responsibility of the user to contact the respective utility authorities for confirmation.
- Only visible surface utilities were located.
- Underground utility data derived from City of Ottawa utility sheet reference: K-14-04, L-14-11.
- Sanitary and storm sewer grades and inverts were derived from: Field measurement.
- A field location of underground plant by the pertinent utility authority is mandatory before any work involving breaking ground, probing, excavating etc.

Notes & Legend

| Denotes | |
|------------|--|
| — | Survey Monument Planted |
| — | Survey Monument Found |
| SIB | Standard Iron Bar |
| SSIB | Short Standard Iron Bar |
| SSIB* | Short Standard Iron Bar (0.3m Long) |
| IB | Iron Bar |
| CC | Cut Cross |
| CP | Concrete Pin |
| (Wit) | Witness |
| Meas | Measured |
| (P1) | Registered Plan 301 |
| (P2) | Plan 4R-34295 |
| (P3) | Plan 4R-23532 |
| (P4) | Plan 4R-23529 |
| (P5) | Plan by (857) dated November 03, 2021 (Ref. No. 17(a)-301-GR) |
| (P6) | Plan by (1473) dated Februar 6, 1989 (Ref. No. 9-301) |
| (P7) | Plan by (ACG) dated September 28, 1977 |
| (D1) | Instrument No. NS202210 |
| ○ MH-ST | Maintenance Hole (Storm) |
| ○ MH-S | Maintenance Hole (Sanitary) |
| — ST | Underground Storm Sewer |
| — S | Underground Sanitary Sewer |
| — W | Underground Water |
| — P | Underground Power |
| — G | Underground Gas |
| — OHW | Overhead Wires |
| ○ UP | Utility Pole |
| □ CB | Catch Basin |
| ○ FH | Fire Hydrant |
| ○ SP | Water Stand Post |
| □ GM | Gas Meter |
| ○ B | Bollard |
| □ AC | Air Conditioner |
| ○ | Diameter |
| CLF | Chain Link Fence |
| BF | Board Fence |
| SRW | Stone Retaining Wall |
| TRW | Timber Retaining Wall |
| Inv | Invert |
| T/G | Top of Grate |
| U/Eave | Underside of Eave |
| Top Fdn | Top of Foundation |
| El | Elevation |
| Centreline | Centreline |
| +65.00 | Location of Elevations |
| +65.00 | Top of Concrete Curb Elevation |
| — | Property Line |
| ○ | Deciduous Tree - The Symbol shown denotes location and trunk diameter only. Size of its' root system/overhead canopy may be smaller/larger than the symbol size depicted on this plan. |

Site Area=464.9 sq.m.

Surveyor's Certificate

- I certify that:
- This survey and plan are correct and in accordance with the Surveys Act, the Surveyors Act and the Regulations made under them.
 - The survey was completed on the 6th day of December, 2022.

Dec 13/2022
Date

Emad Alrefaai
Ontario Land Surveyor

This plan of survey relates to AOLS Plan Submission Form Number V-43234

FARLEY, SMITH & DENIS SURVEYING LTD.

ONTARIO LAND SURVEYORS
CANADA LAND SURVEYORS

Unit 275, 30 COLONNADE ROAD, OTTAWA, ONTARIO K2E 7J6
TEL. (613) 727-8226 E-mail: fsdsurveys@bellnet.ca

WARNING NO PERSON MAY COPY, REPRODUCE, DISTRIBUTE OR ALTER THIS PLAN IN WHOLE OR IN PART WITHOUT THE WRITTEN PERMISSION OF FARLEY, SMITH & DENIS SURVEYING LTD. © FARLEY, SMITH & DENIS SURVEYING LTD., 2022.

FILE No.: 671-22

J:\2022\671-22_2476 Clover St_topo\Final\671-22_2476 Clover St_LT26 RP301_Topo_F.dwg

Committee of Adjustment
Received | Reçu le

2023-01-04

City of Ottawa | Ville d'Ottawa
Comité de dérogation