

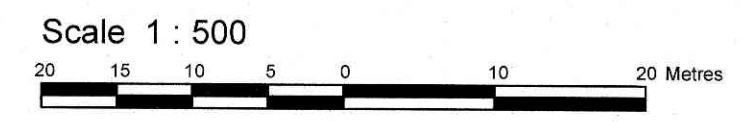
REGISTERED PLAN 4M 1358

I REQUIRE THIS PLAN TO BE DEPOSITED UNDER THE LAND TITLES ACT.
 DATE: _____
 T. HARTWICK
 ONTARIO LAND SURVEYOR
 REPRESENTATIVE FOR LAND REGISTRAR FOR THE LAND TITLES DIVISION OF OTTAWA-CARLETON NO. 4.

PLAN 4R-
 RECEIVED AND DEPOSITED
 DATE: _____

| SCHEDULE | | | | |
|--------------|------|------------|------------|--------------------|
| AREA (Sq.m.) | PART | LOT | CONCESSION | PIN |
| 8531.7 | 1 | PART OF 19 | 9 | PART OF 04446-0513 |

PLAN OF SURVEY OF
PART LOT 19
CONCESSION 9
GEOGRAPHIC TOWNSHIP OF GOULBOURN
CITY OF OTTAWA
 Surveyed by Annis, O'Sullivan, Vollebakk Ltd.



Metric
 DISTANCES AND COORDINATES SHOWN ON THIS PLAN ARE IN METRES AND CAN BE CONVERTED TO FEET BY DIVIDING BY 0.3048.

Surveyor's Certificate
 I CERTIFY THAT:
 1. This survey and plan are correct and in accordance with the Surveys Act, the Surveyors Act and the Land Titles Act and the regulations made under them.
 2. The survey was completed on the XX day of XXXX, 2022.

Date _____
 T. Hartwick
 Ontario Land Surveyor

This plan relates to AOLS Plan Submission form number: V-

Notes & Legend

| | | |
|-------|---------|-----------------------------------|
| □ | Denotes | Survey Monument Planted |
| ■ | " | Survey Monument Found |
| SIB | " | Standard Iron Bar |
| IB | " | Iron Bar |
| (WIT) | " | Witness |
| (AOG) | " | Annis, O'Sullivan, Vollebakk Ltd. |
| Meas. | " | Measured |
| (P1) | " | Plan 5R-1948 |
| (P2) | " | Plan 4R-9789 |
| (P3) | " | Plan 4M-1358 |
| (P4) | " | Plan 5R-6750 |
| (P5) | " | Plan 5R-6821 |
| PWF | " | Post and Wire Fence |

Distances shown on this plan are ground distances and can be converted to grid distances by multiplying by the combined scale factor of 0.99991.

Bearings are grid, derived from Can-Net 2016 Real Time Network GPS observations on reference points A and B, shown hereon, having a bearing of N47°21'50"E and are referenced to Specified Control Points 01919750705 and 01919770923, MTM Zone 9 (76°30' West Longitude) NAD-83 (original).

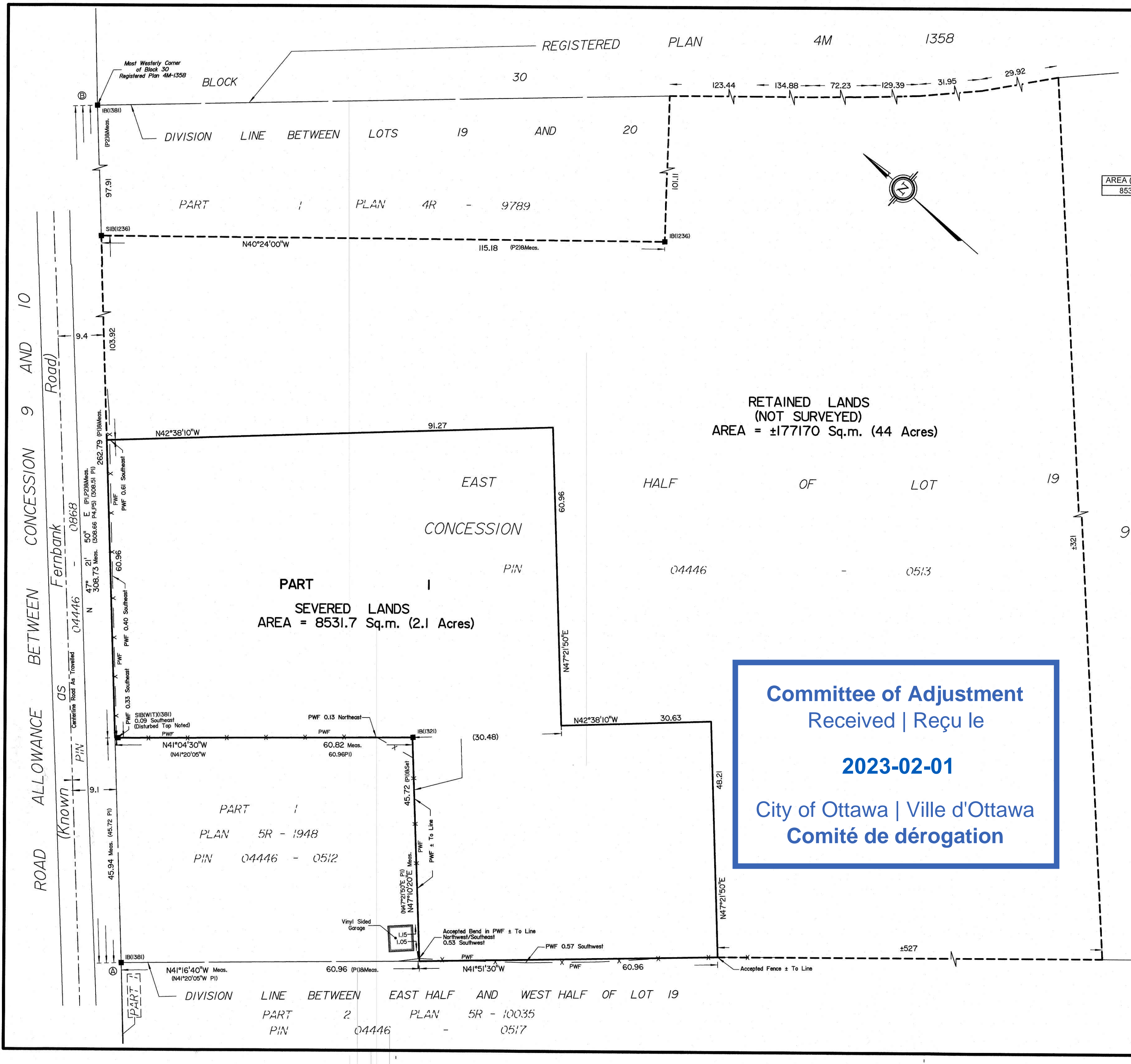
For bearing comparisons, a rotation of 0°18'45" counter-clockwise was applied to bearings on plans P1 and P2.

Coordinates are derived from Can-Net 2016 Real Time Network GPS observations referenced to Specified Control Points 01919750705 and 01919770923, MTM Zone 9 (76°30' West Longitude) NAD-83 (original). Coordinate values are to urban accuracy in accordance with O. Reg. 216/10.

| | | | | |
|---------------|----------|------------|--------|-----------|
| . 01919750705 | Northing | 5016816.93 | Eastng | 360806.84 |
| . 01919770923 | Northing | 5013536.21 | Eastng | 346275.92 |
| . Point A | Northing | 5010527.91 | Eastng | 349132.86 |
| . Point B | Northing | 5010737.02 | Eastng | 349359.97 |

Caution: Coordinates cannot, in themselves, be used to re-establish corners or boundaries shown on this plan.

Committee of Adjustment
 Received | Reçu le
2023-02-01
 City of Ottawa | Ville d'Ottawa
Comité de dérogation



RETAINED LANDS
 (NOT SURVEYED)
 AREA = ±177170 Sq.m. (44 Acres)

PART 1
 SEVERED LANDS
 AREA = 8531.7 Sq.m. (2.1 Acres)