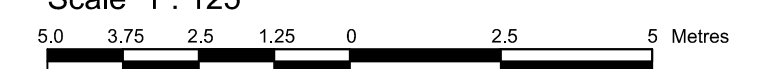


Committee of Adjustment
Received | Reçu le
2023-02-06
City of Ottawa | Ville d'Ottawa
Comité de dérogation

SCHEDULE

AREA (Sq.m.)	PART	LOT	PLAN	PIN
295.4	1	15	235	ALL OF
385.4	2	(East Golden Avenue)		04009-0076

PLAN OF SURVEY OF LOT 15 (EAST GOLDEN AVENUE) REGISTERED PLAN 235 CITY OF OTTAWA
Surveyed by Annis, O'Sullivan, Vollebakk Ltd.
December 22, 2022
Scale 1 : 125



The intended plot size of the plan is 610 mm in width by 457 mm in height when plotted at a scale of 1:125.

Metric
DISTANCES AND COORDINATES SHOWN ON THIS PLAN ARE IN METRES AND CAN BE CONVERTED TO FEET BY DIVIDING BY 0.3048.

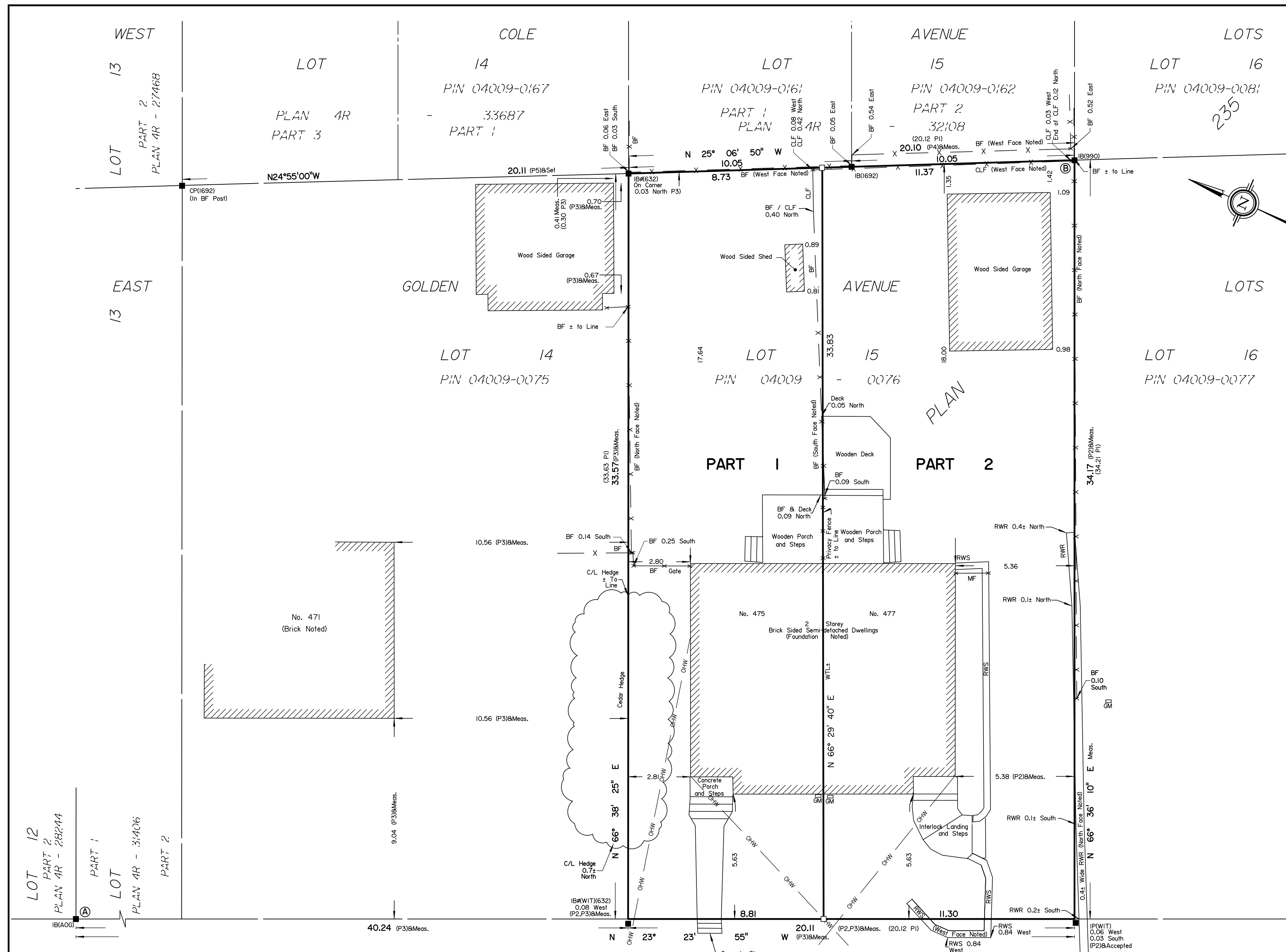
Surveyor's Certificate
I CERTIFY THAT:
1. This survey and plan are correct and in accordance with the Surveys Act, the Surveyors Act and the Land Titles Act and the regulations made under them.
2. The survey was completed on the ___ day of _____, 2023.

Date _____ E. H. Herweyer
Ontario Land Surveyor

This plan relates to AOLS Plan Submission form number:

Notes & Legend

- Denotes
- Survey Monument Planted
 - Survey Monument Found
 - IB Iron Bar
 - CP Concrete Pin
 - IBØ Round Iron Bar
 - IP Iron Pipe
 - (WIT) Witness
 - Meas. Measured
 - (AOG) Annis, O'Sullivan, Vollebakk Ltd.
 - (PI) Registered Plan 235
 - (P2) (1287) Plan dated February 24, 2004
 - (P3) (AOG) Plan dated May 6, 2016
 - (P4) (1692) Plan dated July 20, 2018
 - (P5) (AOG) Plan dated March 29, 2021
 - CLF Chain Link Fence
 - BF Board Fence
 - MF Metal Fence
 - OHW Overhead Wire
 - RWS Stone Retaining Wall
 - RWR Rock Retaining Wall
 - C/L Centreline
 - WTL± Wall ± to Line
 - GM Gas Meter



Distances shown on this plan are ground distances and can be converted to grid distances by multiplying by the combined scale factor of 0.99993.
Bearings are grid, derived from Can-Net 2016 Real Time Network GPS observations on reference points A and B, shown hereon, having a bearing of N52°55'50"W and are referenced to Specified Control Points 01919680005 and 01919680105, MTM Zone 9 (76°30' West Longitude) NAD-83 (original).
Coordinates are derived from Can-Net 2016 Real Time Network GPS observations referenced to Specified Control Points 01919680005 and 01919680105, MTM Zone 9 (76°30' West Longitude) NAD-83 (original).
Coordinate values are to urban accuracy in accordance with O. Reg. 216/10.

.01919680005	Northing	5027191.26	Easting	361496.76
.01919680105	Northing	5024915.16	Easting	373971.65
.Point A	Northing	5027858.44	Easting	362946.15
.Point B	Northing	5027816.64	Easting	363001.47

Caution: Coordinates cannot, in themselves, be used to re-establish corners or boundaries shown on this plan.

REGISTERED

GOLDEN (Formerly Golden) AVENUE
PIN 04009 - 0066

ANNIS, O'SULLIVAN, VOLLEBEKK LTD.
14 Concourse Gate, Suite 500
Nepean, Ont. K2E 7S6
Phone: (613) 727-0850 / Fax: (613) 727-1079
Email: Napean@annislvs.com

Ontario Land Surveyors Job No. 22732-22 CI L115 East Golden PL235 R.DI FS

**LOT 15
(EAST GOLDEN AVENUE)
REGISTERED PLAN 235
CITY OF OTTAWA**

Surveyed by Annis, O'Sullivan, Vollebek Ltd.

Scale 1 : 125



Metric

DISTANCES SHOWN ON THIS PLAN ARE IN METRES AND CAN BE CONVERTED TO FEET BY DIVIDING BY 0.3048

Surveyor's Certificate

I CERTIFY THAT:

1. This survey and plan are correct and in accordance with the Surveys Act and the Surveyors Act and the regulations made under them.
2. The survey was completed on the 14th day of July, 2022.

July 15/22
Date

T. Hartwick
Ontario Land Surveyor

Notes & Legend

- | | | |
|----------|---------|-------------------------------------|
| □ | Denotes | Survey Monument Planted |
| ■ | " | Survey Monument Found |
| IB | " | Iron Bar |
| CP | " | Concrete Pin |
| IB# | " | Round Iron Bar |
| IP | " | Iron Pipe |
| (WIT) | " | Witness |
| Meas. | " | Measured |
| (AOG) | " | Annis, O'Sullivan, Vollebek Ltd. |
| (P1) | " | Registered Plan 235 |
| (P2) | " | (1287) Plan dated February 24, 2004 |
| (P3) | " | (AOG) Plan dated May 6, 2016 |
| (P4) | " | (1692) Plan dated July 10, 2020 |
| (P5) | " | (AOG) Plan dated March 29, 2021 |
| (P6) | " | (STANTEC) Plan dated March 23, 2006 |
| (P7) | " | Plan 4R-32108 |
| ○ MH-S | " | Maintenance Hole (Sanitary) |
| — OHW | " | Overhead Wires |
| ○ MH-ST | " | Maintenance Hole (Storm Sewer) |
| ○ MH-S | " | Maintenance Hole (Sanitary) |
| ○ UP | " | Utility Pole |
| □ CB | " | Catch Basin |
| T/G | " | Top of Grate |
| □ GM | " | Gas Meter |
| □ AC | " | Air Conditioner |
| CLF | " | Chain Link Fence |
| BF | " | Board Fence |
| MF | " | Metal Fence |
| — | " | Gate |
| RWS | " | Stone Retaining Wall |
| RWR | " | Rock Retaining Wall |
| ∅ | " | Diameter |
| + 65.00 | " | Location of Elevations |
| + 65.00* | " | Top of Retaining Wall Elevation |
| C/L | " | Centreline |
| — | " | Property Line |
| ○ | " | Deciduous Tree |

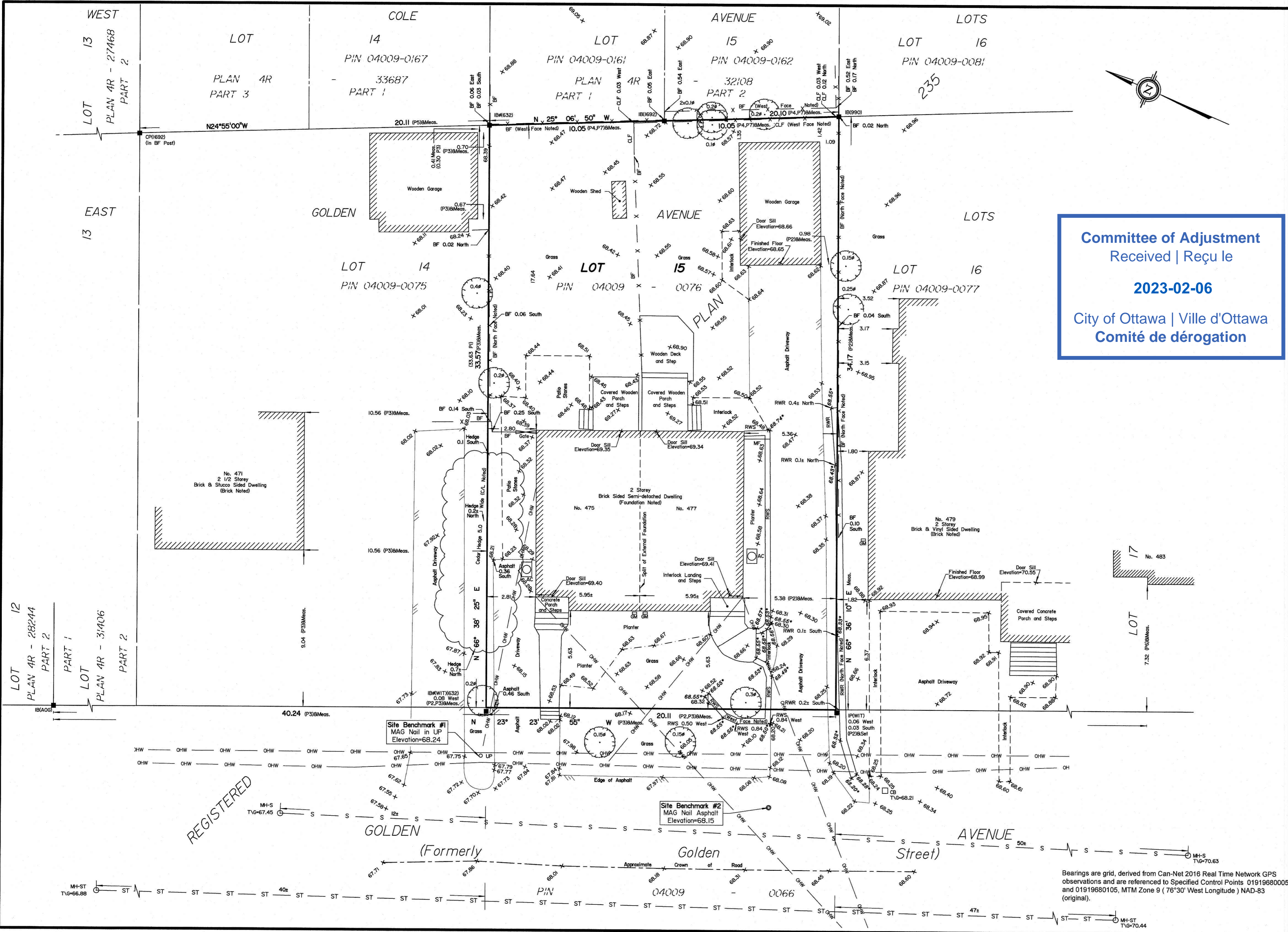
ASSOCIATION OF ONTARIO
LAND SURVEYORS
PLAN SUBMISSION FORM
V-27680

THIS PLAN IS NOT VALID UNLESS IT IS AN EMBOSSED ORIGINAL COPY ISSUED BY THE SURVEYOR In accordance with Regulation 1026, Section 29 (3).

**Committee of Adjustment
Received | Reçu le**

2023-02-06

**City of Ottawa | Ville d'Ottawa
Comité de dérogation**



ELEVATION NOTES

1. Elevations shown are geodetic and are referred to the CGVD28 geodetic datum.
2. It is the responsibility of the user of this information to verify that the job benchmark has not been altered or disturbed and that its relative elevation and description agrees with the information shown on this drawing.

UTILITY NOTES

1. This drawing cannot be accepted as acknowledging all of the utilities and it will be the responsibility of the user to contact the respective utility authorities for confirmation.
2. Only visible surface utilities were located.
3. A field location of underground plant by the pertinent utility authority is mandatory before any work involving breaking ground, probing, excavating etc.

© Annis, O'Sullivan, Vollebek Ltd., 2022. THIS PLAN IS PROTECTED BY COPYRIGHT

ANNIS, O'SULLIVAN, VOLLEBEK LTD.
14 Concourse Gate, Suite 500
Nepean, Ont. K2E 7S6
Phone: (613) 727-0850 / Fax: (613) 727-1079
Email: Nepean@aosvl.com

Ontario Land Surveyors (Job No. 22732-22 Hemlock Carpentry LI 15 PI 235 T 04) **ND**

Y:\2022\22732-22 Hemlock Carpentry 475-477 Golden, DP00_Plan\Drawings\22732-22 Hemlock Carpentry LI 15 PI 235 T 04.dwg