

DRAWING NOTES

- ① FEATURE VEHICLE DISPLAY.
- ② NEW VOLVO PYLON SIGN.
- ③ EV CHARGING STATION.
- ④ RIVESTONE AND PERMEABLE PAVING.

NOTES

It is the responsibility of the appropriate contractor to check and verify all dimensions on site and report all errors and or omissions to the Architect.
 All contractors must comply with all pertinent codes and by-laws.
 Do not scale drawings.
 This drawing may not be used for construction until signed by the Architect.
 Copyright reserved.

LOCATION MAP



LEGAL DESCRIPTION

PART OF LOTS 17 AND 18
 REGISTERED PLAN 23
 CITY OF OTTAWA
 SITE PLAN BASED ON AOV SURVEY AND TOPOGRAPHIC SKETCH DATED FEBRUARY 2021.

no.	date	revision
12	11-28-2022	ISSUED FOR GENERAL REVIEW
11	11-08-2022	ISSUED FOR GENERAL REVIEW
10	07-27-2022	ISSUED FOR CITY REVIEW
9	06-06-2022	ISSUED FOR REVIEW
8	05-26-2022	ISSUED FOR REVIEW
8	03-03-2022	ISSUED FOR REVIEW
7	11-24-2021	ISSUED FOR REVIEW
6	10-14-2021	ISSUED FOR REVIEW
5	05-27-2021	ISSUED FOR REVIEW
4	04-11-2021	ISSUED FOR REVIEW
2	03-1-2021	ISSUED FOR REVIEW
1	11-11-2020	ISSUED FOR REVIEW

LEGEND

- CAR ACCESS ARROW PAINTED ON PAVEMENT
- WELCOME SIGN PAINTED ON PAVEMENT
- O/H DOOR
- PUBLIC
- EXIT DOOR
- PROPERTY LINE EXISTING & PROPOSED



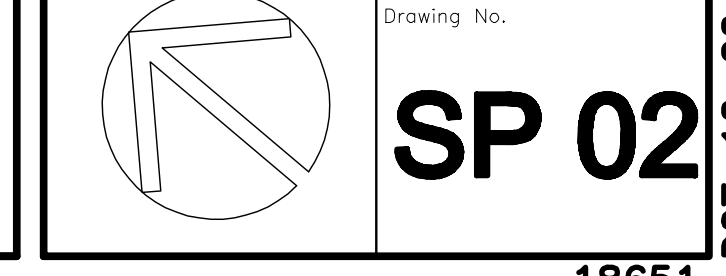
brian k. clark
ARCHITECT
 141 Catherine Street, Suite 102
 Ottawa, Ontario K2P 1C3
 TEL: (613) 238-7412 · FAX: 238-1799
 Email: bkclarkarchitect@gmail.com

Project:
 VOLVO ST. LAURENT
 1328 MICHAEL STREET
 OTTAWA, ONTARIO

OTTAWA, ONTARIO
 Drawing:

SITE PLAN
 Project No. 1811, Drawn By: DC, Scale: AS SHOWN, Date: JUNE 2022, Drawing No.

Committee of Adjustment
 Received | Reçu le
 Revised | Modifié le : 2023-02-23
 City of Ottawa | Ville d'Ottawa
 Comité de dérogation



I REQUIRE THIS PLAN TO BE DEPOSITED UNDER THE LAND TITLES ACT.
DATE: _____

PLAN 4R-
RECEIVED AND DEPOSITED
DATE: _____

E.H. HERWEYER
ONTARIO LAND SURVEYOR

REPRESENTATIVE FOR
LAND REGISTRAR FOR THE
LAND TITLES DIVISION OF
OTTAWA-CARLETON NO. 4.

SCHEDULE				
AREA (Sq.m.)	PART	LOT	PLAN	PIN
3707.8	1	PART OF 17 & 18	23	ALL OF 04263-0275
478.0	2			
107.8	3			
4927.9	4			
200.6	5			
184.9	6			
938.9	7			
91.4	8			
15.1	9			
9.1	10			
114.6	11			
4.1	12			
560.7	13			
118.1	14	ALL OF 04263-0276		

PLAN OF SURVEY OF
PART OF LOTS 17 AND 18
REGISTERED PLAN 23
CITY OF OTTAWA
Surveyed by Annis, O'Sullivan, Vollebakk Ltd.

Scale 1 : 300
12 9 6 3 0 6 12 Metres

Metric
DISTANCES AND COORDINATES SHOWN ON THIS PLAN
ARE IN METRES AND CAN BE CONVERTED TO FEET BY
DIVIDING BY 0.3048.

Surveyor's Certificate
I CERTIFY THAT:
1. This survey and plan are correct and in accordance with the Surveys Act, the Surveys Act and the Land Titles Act and the regulations made under them.
2. The survey was completed on the ___ day of _____, 2022.

Date: _____
E. H. Herweyer
Ontario Land Surveyor

This plan relates to AOLS Plan Submission form number: V-

Committee of Adjustment
Received | Reçu le
2022-09-23
City of Ottawa | Ville d'Ottawa
Comité de dérogation

Notes & Legend

- Denotes Survey Monument Planted
- Blaney Monument Found
- SIB Standard Iron Bar
- SSIB Short Standard Iron Bar
- IB Iron Bar
- (WIT) Witness
- (AOG) Annis, O'Sullivan, Vollebakk Ltd.
- Mess. Measured
- (P1) (AOG) Plan Dated August 7, 2002
- (D1) Instrument N685212

Bearings are grid, derived from Can-Net 2016 Real Time Network GPS observations on reference points A and B, shown hereon, having a bearing of N45°13'19"E and are referenced to Specified Control Points 01919680105 and 0191968434761, MTM Zone 9 (76°30' West Longitude) NAD-83 (original).

For bearing comparisons, a rotation of 0°01'10" clockwise was applied to bearings on plan P1

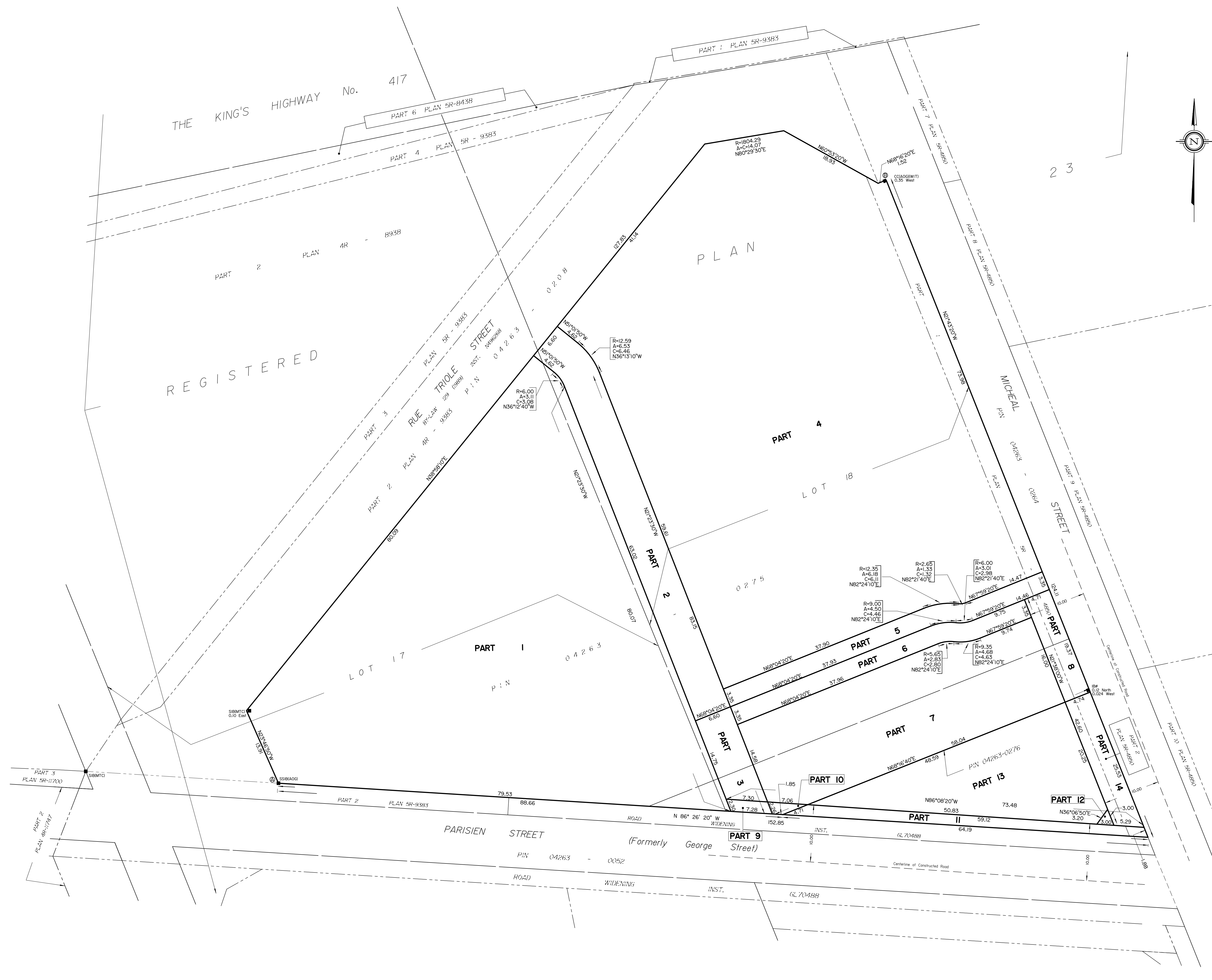
Coordinates are derived from Can-Net 2016 Real Time Network GPS observations on reference points A and B, shown hereon, having a bearing of N45°13'19"E and are referenced to Specified Control Points 01919680105 and 0191968434761, MTM Zone 9 (76°30' West Longitude) NAD-83 (original).

Coordinate values are in accordance with O. Reg. 216/10.

.01919680105	Northing	5024915.16	Eastings	373971.65
.0191968434761	Northing	5036178.12	Eastings	372436.11
.Point A	Northing	5031376.88	Eastings	372698.54
.Point B	Northing	5031482.68	Eastings	372805.16

Caution: Coordinates cannot, in themselves, be used to re-establish corners or boundaries shown on this plan.

ANNIS, O'SULLIVAN, VOLLEBEKK LTD.
14 Concourse Gate, Suite 500
Nepean, Ont. K2E 7S6
Phone: (613) 727-0850 / Fax: (613) 727-1079
Email: Nepean@avol.com
Ontario Land Surveyors
Reg. No. 23249-21 ASSGARD P1 L1 17818 P13 R 02



DRAWING NOTES

- ① BLUE TINTED THERMAL UNITS
- ② SOLERA CURTAINWALL SYSTEM C/W SEMI OPAQUE THERMAL UNITS
- ③ ACM PANELS, SILVER METALLIC FINISH, TYPICAL
- ④ FINISHED RIBBED METAL SIDING, DARK GREY
- ⑤ SHOWROOM ENTRANCE AND VESTIBULE, PRODEMA WOOD GRAIN PANELS
- ⑥ CONTINUOUS LED STRIP LIGHTING AROUND PERIMETER
- ⑦ SHOP WINDOWS, CLEAR THERMAL UNITS C/W BUTT SILICONE JOINTS
- ⑧ ALL ALUMINUM ENTRANCES AND O/H DOORS TO BE CLEAR ANODIZED FINISH, TYPICAL
- ⑨ PAINTED STEEL DOORS TO BE DARK GREY TO MATCH SIDING
- ⑩ VOLVO WOODMARK AS PER VOLVO SIGN PROGRAM
- ⑪ DEALERSHIP NAME SIGN AS PER VOLVO SIGN PROGRAM
- ⑫ SERVICE SIGN AS PER SIGN PROGRAM

NOTES

It is the responsibility of the appropriate contractor to check and verify all dimensions on site and report all errors and or omissions to the Architect.
 All contractors must comply with all pertinent codes and by-laws.
 Do not scale drawings.
 This drawing may not be used for construction until signed by the Architect.
 Copyright reserved.

LOCATION MAP



LEGAL DESCRIPTION

PART OF LOTS 17 AND 18
 REGISTERED PLAN 23
 CITY OF OTTAWA

no.	date	revision
3	28 JUL. 2022	ISSUED FOR REVIEW
2	26 MAY 2022	ISSUED FOR REVIEW
1	12 OCT. 2021	ISSUED FOR REVIEW

Stamp:

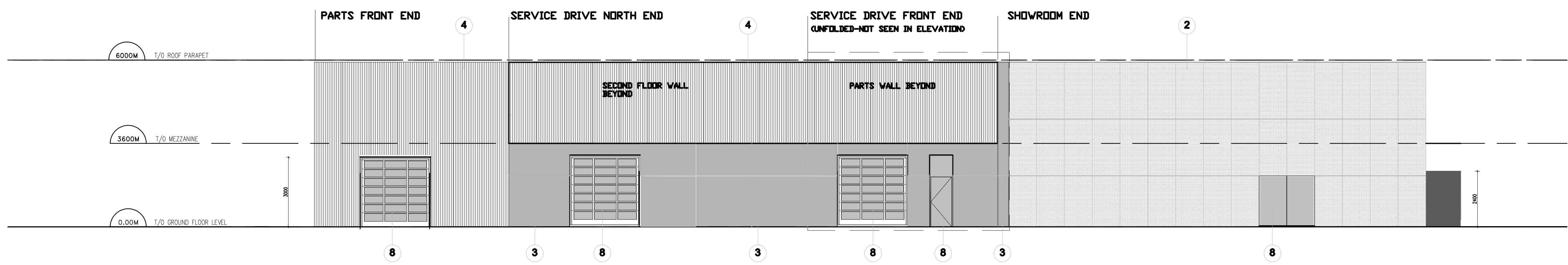
brian k. clark
ARCHITECT
 141 Catherine Street, Suite 102
 Ottawa, Ontario K2P 1C3
 TEL: (613) 238-7412 · FAX: 238-1799
 Email: bkclarkarchitect@on.albn.com

Project:
 VOLVO ST. LAURENT
 1300 MICHAEL STREET
 OTTAWA, ONTARIO

OTTAWA ONTARIO
 Drawing:
NORTH ELEVATION

Project No.	Drawn By:	Scale:
1811	DC	1 : 100
North Arrow:	Date:	Drawing No.
	12-OCT-2021	A008

A008



NORTH ELEVATION (UNFOLDED)

Committee of Adjustment
 Received | Reçu le
 2022-09-23
 City of Ottawa | Ville d'Ottawa
 Comité de dérogation

1 NORTH ELEVATION UNFOLDED
 A008 SCALE: 1:100

DRAWING NOTES

- ① BLUE TINTED THERMAL UNITS
- ② SOLERA CURTAINWALL SYSTEM C/W SEMI OPAQUE THERMAL UNITS
- ③ ACM PANELS, SILVER METALLIC FINISH, TYPICAL
- ④ PREFINISHED RIBBED METAL SIDING, DARK GREY
- ⑤ SHOWROOM ENTRANCE AND VESTIBULE, PRODEMA WOOD GRAN PANELS
- ⑥ CONTINUOUS LED STRIP LIGHTING AROUND PERIMETER
- ⑦ SHOP WINDOWS, CLEAR THERMAL UNITS C/W BUTT SILICONE JOINTS
- ⑧ ALL ALUMINUM ENTRANCES AND O/H DOORS TO BE CLEAR ANODIZED FINISH, TYPICAL
- ⑨ PAINTED STEEL DOORS TO BE DARK GREY TO MATCH SIDING
- ⑩ VOLVO WOODMARK AS PER VOLVO SIGN PROGRAM
- ⑪ DEALERSHIP NAME SIGN AS PER VOLVO SIGN PROGRAM
- ⑫ SERVICE SIGN AS PER SIGN PROGRAM

NOTES

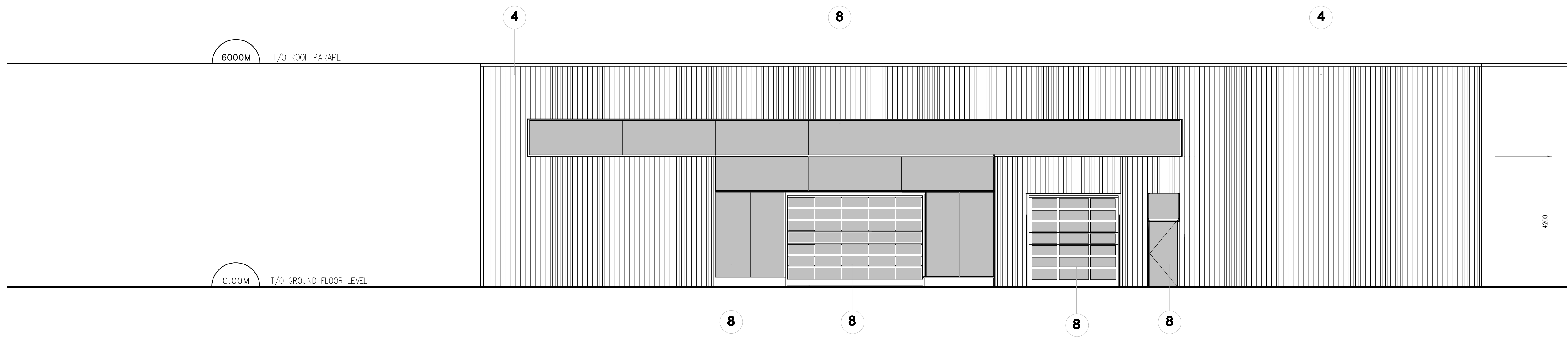
It is the responsibility of the appropriate contractor to check and verify all dimensions on site and report all errors and or omissions to the Architect.
 All contractors must comply with all pertinent codes and by-laws.
 Do not scale drawings.
 This drawing may not be used for construction until signed by the Architect.
 Copyright reserved.

LOCATION MAP



LEGAL DESCRIPTION

PART OF LOTS 17 AND 18
 REGISTERED PLAN 23
 CITY OF OTTAWA



EAST ELEVATION

1 EAST ELEVATION
 A007 SCALE: 1:75

no.	date	revision
3	26 JUL. 2022	ISSUED FOR REVIEW
2	26 MAY 2022	ISSUED FOR REVIEW
1	12 OCT. 2021	ISSUED FOR REVIEW

Stamp:

brian k. clark
ARCHITECT
 141 Catherine Street, Suite 102
 Ottawa, Ontario K2P 1C3
 TEL: (613) 238-7412 · FAX: 238-1799
 Email: bkclarkarchitect@on.albn.com

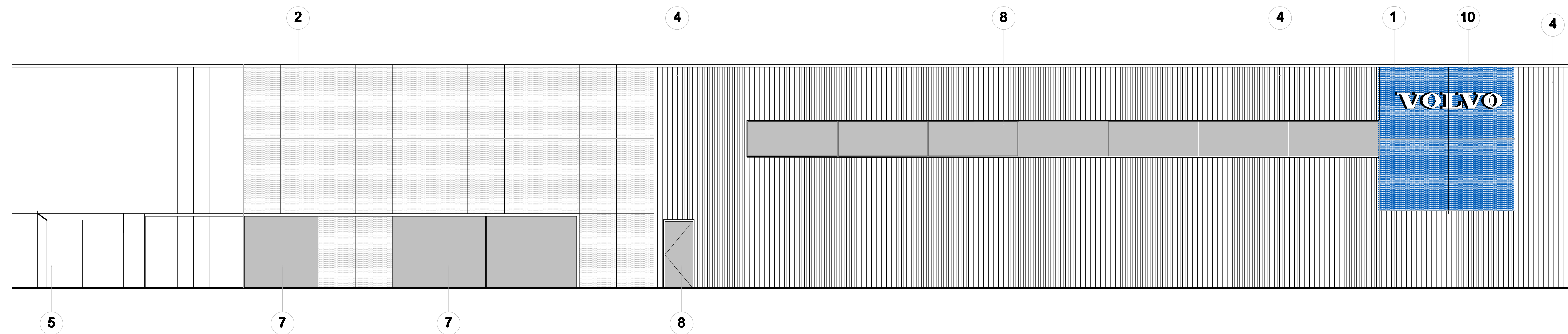
Project:
 VOLVO ST. LAURENT
 1300 MICHAEL STREET
 OTTAWA, ONTARIO

Ottawa Ontario
 Drawing:
EAST ELEVATION

Project No. 1811 Drawn By: DC Scale: 1 : 75
 Date: 12-OCT-2021
 North Arrow:

Drawing No. **A007**

D007-12-22-0012
18651



SOUTH ELEVATION

1 SOUTH ELEVATION
A005 SCALE: 1:75

DRAWING NOTES

- ① BLUE TINTED THERMAL UNITS
- ② SOLERA CURTAINWALL SYSTEM C/W SEMI OPAQUE THERMAL UNITS
- ③ ACM PANELS, SILVER METALLIC FINISH, TYPICAL
- ④ PREFINISHED RIBBED METAL SIDING, DARK GREY
- ⑤ SHOWROOM ENTRANCE AND VESTIBULE, PRODEMA WOOD GRAN PANELS
- ⑥ CONTINUOUS LED STRIP LIGHTING AROUND PERIMETER
- ⑦ SHOP WINDOWS, CLEAR THERMAL UNITS C/W BUTT SILICONE JOINTS
- ⑧ ALL ALUMINUM ENTRANCES AND O/H DOORS TO BE CLEAR ANODIZED FINISH, TYPICAL
- ⑨ PAINTED STEEL DOORS TO BE DARK GREY TO MATCH SIDING
- ⑩ VOLVO WOODMARK AS PER VOLVO SIGN PROGRAM
- ⑪ DEALERSHIP NAME SIGN AS PER VOLVO SIGN PROGRAM
- ⑫ SERVICE SIGN AS PER SIGN PROGRAM

NOTES

It is the responsibility of the appropriate contractor to check and verify all dimensions on site and report all errors and or omissions to the Architect.
All contractors must comply with all pertinent codes and by-laws.
Do not scale drawings.
This drawing may not be used for construction until signed by the Architect.
Copyright reserved.

LOCATION MAP



LEGAL DESCRIPTION

PART OF LOTS 17 AND 18
REGISTERED PLAN 23
CITY OF OTTAWA

no.	date	revision
3	28 JUL. 2022	ISSUED FOR REVIEW
2	26 MAY 2022	ISSUED FOR REVIEW
1	12 OCT. 2021	ISSUED FOR REVIEW

Stamp:

brian k. clark
ARCHITECT
141 Catherine Street, Suite 102
Ottawa, Ontario K2P 1C3
TEL: (613) 238-7412 · FAX: 238-1799
Email: bkclarkarchitect@on.albn.com

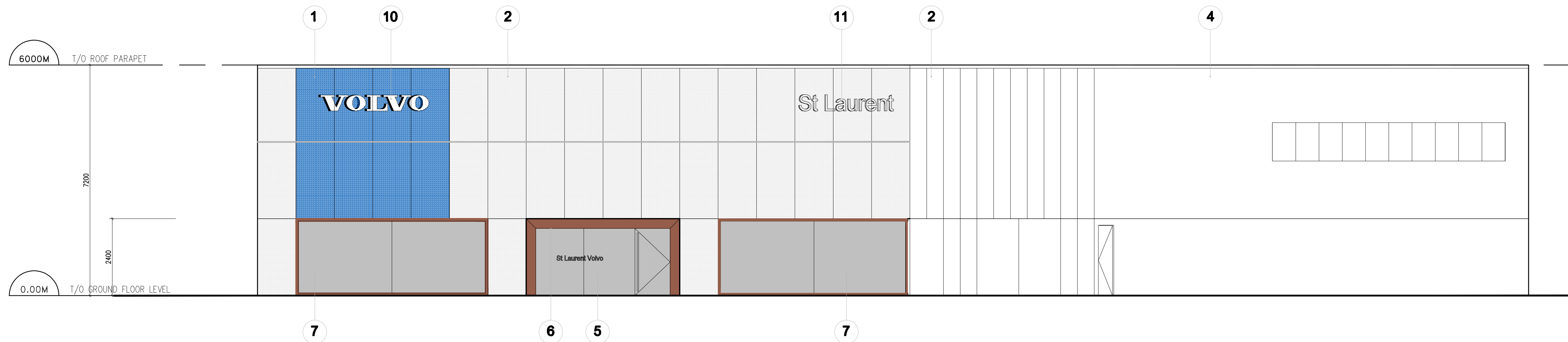
Project:
VOLVO ST. LAURENT
1300 MICHAEL STREET
OTTAWA, ONTARIO

OTTAWA ONTARIO
Drawing:
SOUTH ELEVATION

Project No. 1811 Drawn By: DC Scale: 1 : 75
Date: 12-OCT-2021
North Arrow: Drawing No. A006



A006



WEST ELEVATION

1 WEST ELEVATION
A005 SCALE: 1:75

DRAWING NOTES

- ① BLUE TINTED THERMAL UNITS
- ② SOLERA CURTAINWALL SYSTEM C/W SEMI OPAQUE THERMAL UNITS
- ③ ACM PANELS, SILVER METALLIC FINISH, TYPICAL
- ④ PREFINISHED RIBBED METAL SIDING, DARK GREY
- ⑤ SHOWROOM ENTRANCE AND VESTIBULE, PRODEMA WOOD GRAN PANELS
- ⑥ CONTINUOUS LED STRIP LIGHTING AROUND PERIMETER
- ⑦ SHOP WINDOWS, CLEAR THERMAL UNITS C/W BUTT SILICONE JOINTS
- ⑧ ALL ALUMINUM ENTRANCES AND O/H DOORS TO BE CLEAR ANODIZED FINISH, TYPICAL
- ⑨ PAINTED STEEL DOORS TO BE DARK GREY TO MATCH SIDING
- ⑩ VOLVO WOODMARK AS PER VOLVO SIGN PROGRAM
- ⑪ DEALERSHIP NAME SIGN AS PER VOLVO SIGN PROGRAM
- ⑫ SERVICE SIGN AS PER SIGN PROGRAM

NOTES

It is the responsibility of the appropriate contractor to check and verify all dimensions on site and report all errors and/or omissions to the Architect.
All contractors must comply with all pertinent codes and by-laws.
Do not scale drawings.
This drawing may not be used for construction until signed by the Architect.
Copyright reserved.

LOCATION MAP



LEGAL DESCRIPTION

PART OF LOTS 17 AND 18
REGISTERED PLAN 23
CITY OF OTTAWA

no.	date	revision
3	28 JUL. 2022	ISSUED FOR REVIEW
2	26 MAY 2022	ISSUED FOR REVIEW
1	12 OCT. 2021	ISSUED FOR REVIEW

no.	date	revision

brian k. clark
ARCHITECT
141 Catherine Street, Suite 102
Ottawa, Ontario K2P 1C3
TEL: (613) 238-7412 · FAX: 238-1799
Email: bclarkarchitect@on.aibn.com

Project:

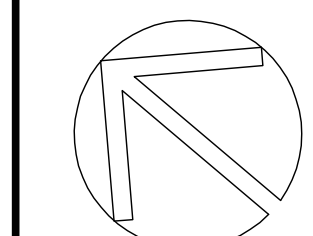
VOLVO ST. LAURENT
1300 MICHAEL STREET
OTTAWA, ONTARIO

OTTAWA ONTARIO

Drawing:

WEST ELEVATION

Project No.	Drawn By	Scale:
1811	DC	1 : 75
North Arrow:		Date:
		12-OCT-2021
		Drawing No.:



A005