

REGISTERED PLAN

BLOCK B

P. I. N. 0 4 2 4 6 - 0 0 6 4

Committee of Adjustment
Received | Reçu le

2023-02-01

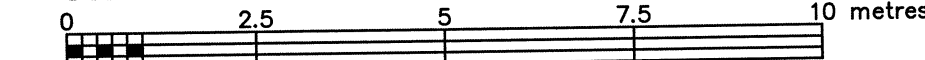
City of Ottawa | Ville d'Ottawa
Comité de dérogation

TOPOGRAPHIC PLAN OF SURVEY OF

LOT 14 AND
PART OF LOTS 13 AND 15
REGISTERED PLAN 338
CITY OF OTTAWA

FARLEY, SMITH & DENIS SURVEYING LTD. 2021

Scale 1: 100



Metric Note

Distances and coordinates on this plan are in metres and can be converted to feet by dividing by 0.3048.

Distance Note

Bearings hereon are ground distances and can be converted to grid distances by multiplying by the combined scale factor of 0.99995.

Bearing Note

Bearings hereon are grid bearings, referred to the easterly limit of Dieppe Street having a bearing of N0°06'00"W and are referred to the Central Meridian of MTM Zone 9 (76°30' West Longitude) Nad-83 (Original).

For bearing comparisons, a rotation of 0°20'27" counter-clockwise was applied to bearings on P1, P3, P4, P5.

For bearing comparisons, a rotation of 0°38'27" counter-clockwise was applied to bearings on P2.

For bearing comparisons, a rotation of 0°03'45" clockwise was applied to bearings on P6, P7.

Elevation Notes

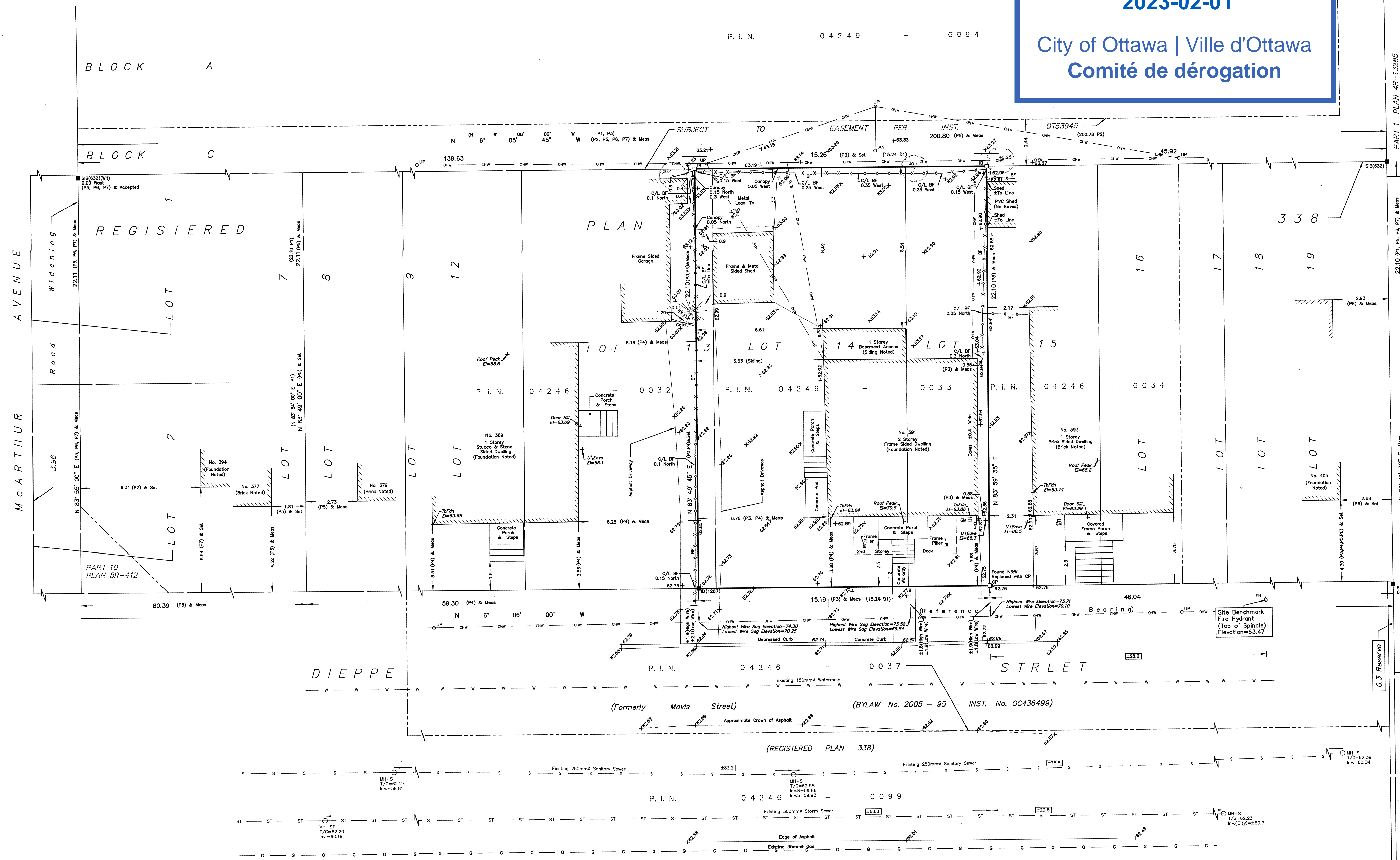
- Elevations shown are geodetic and are referred to Geodetic Datum CGVD-1928 ±1978. (FSD File No. 12-20)
- Elevations derived from City of Ottawa Vertical Benchmark G-144, Index No. 308 having a published elevation of 63.742m.
- It is the responsibility of the user of this information to verify that the job benchmark has not been altered or disturbed and that its relative elevation and description agrees with the information shown on this drawing.

Utility Notes

- This drawing cannot be accepted as acknowledging all of the utilities and it will be the responsibility of the user to contact the respective utility authorities for confirmation.
- Only visible surface utilities were located.
- Underground utility data compiled from City of Ottawa utility sheet reference: E-18-08, D-18-16, VA-125, VA-280.
- Sanitary and storm sewer grades and inverts were compiled from: Field measurement \ City of Ottawa utility sheets.
- A field location of underground plant by the pertinent utility authority is mandatory before any work involving breaking ground, probing, excavating etc.

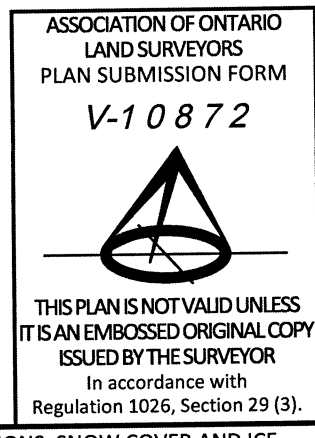
Notes & Legend

- Denotes Survey Monument Planted
- SIB Survey Monument Found
- Standard Iron Bar
- Short Standard Iron Bar
- Iron Bar
- Concrete Pin
- Nail & Washer
- Witness
- Measured
- Registered Plan 338
- Registered Plan 772
- Plan by (1319) dated June 29, 1987 (Ref No. 3-338GR)
- Plan by (1287) dated December 6, 1991 (Job No. 466/91)
- Plan by (AOG) dated November 15, 1988 (Job No. 0-724-88)
- Plan by (990) dated June 27, 1994
- Plan by (990) dated November 23, 1987
- Inst. No. NS103532
- Deciduous Tree - The Symbol shown denotes location and trunk diameter only. Size of its root system/overhead canopy may be smaller/larger than the symbol size depicted on this plan.
- Coniferous Tree - The Symbol shown denotes location and trunk diameter only. Size of its root system/overhead canopy may be smaller/larger than the symbol size depicted on this plan.
- Maintenance Hole (Storm)
- Maintenance Hole (Sanitary)
- Underground Storm Sewer
- Underground Sanitary Sewer
- Underground Water
- Underground Gas
- Utility Pole
- Gas Meter
- Air Conditioner
- Diameter
- Board Fence
- Centreline
- Stone Retaining Wall
- Timber Retaining Wall
- Invert
- Top of Grate
- Underside of Eave
- Top of Foundation
- Location of Elevations
- Top of Concrete Curb Elevation



PART 1 PLAN 4R-13295
CORNER
LOT 8 JUNCTION
LOT 19

PART 1 PLAN 4R-21523



TOPOGRAPHIC DATA WAS COLLECTED UNDER WINTER CONDITIONS. SNOW COVER AND ICE PRECLUDE DETERMINING LOCATION AND ELEVATION OF SOME TOPOGRAPHICAL DATA THAT IS OTHERWISE VISIBLE.

WARNING: NO PERSON MAY COPY, REPRODUCE, DISTRIBUTE OR ALTER THIS PLAN IN WHOLE OR IN PART WITHOUT THE WRITTEN PERMISSION OF FARLEY, SMITH & DENIS SURVEYING LTD.
© FARLEY, SMITH & DENIS SURVEYING LTD., 2021.

Surveyor's Certificate

- This survey and plan are correct and in accordance with the Surveyors Act, the Surveyors Act and the Regulations made under them.
- The survey was completed on the 16th day of February, 2021.

March 03/2021
Date
Emad Alrefaai
Ontario Land Surveyor

FARLEY, SMITH & DENIS SURVEYING LTD.

ONTARIO LAND SURVEYORS
CANADA LAND SURVEYORS
190 COLONNADE ROAD, OTTAWA, ONTARIO K2E 7J5
TEL. (613) 727-8226 FAX. (613) 727-1826