

LOT 17  
 REGISTERED PLAN 299597  
 PART 2 PLAN SR - 9800

I REQUIRE THIS PLAN TO BE DEPOSITED UNDER THE LAND TITLES ACT.  
 DATE: \_\_\_\_\_

PLAN 4R-  
 RECEIVED AND DEPOSITED DATE: \_\_\_\_\_

E. H. HERVEYER  
 ONTARIO LAND SURVEYOR

REPRESENTATIVE FOR LAND REGISTRAR FOR THE LAND TITLES DIVISION OF OTTAWA-CARLETON NO. 4.

SCHEDULE			
AREA (m <sup>2</sup> )	PART	LOT	CONVEYANCE
828	1	85	A (RIDEAU FRONT)
929	2		ALL OF PIN 04625-0582

PLAN OF SURVEY OF  
 PART OF LOT 25  
 CONCESSION A (RIDEAU FRONT)  
 GEOGRAPHIC TOWNSHIP OF NEPEAN  
 CITY OF OTTAWA  
 Surveyed by Annis, O'Sullivan, Vollebek Ltd.

Scale 1 : 150

Metre  
 DISTANCES AND COORDINATES SHOWN ON THIS PLAN ARE IN METRES AND CAN BE CONVERTED TO FEET BY DIVIDING BY 0.3048.

Surveyor's Certificate  
 I CERTIFY THAT:  
 1. This survey and plan are correct and in accordance with the Survey Act and the Surveyors Act and the regulations made under them.  
 2. The survey was completed on the \_\_\_ day of \_\_\_\_\_, 2021.

Date \_\_\_\_\_  
 E. H. Herveyer  
 Ontario Land Surveyor

Distances shown on this plan are ground distances and can be converted to grid distances by multiplying by the combined scale factor of 0.999932.

Bearings are grid, derived from Can-Net 2015 Real Time Network GPS observations on reference points A and B, shown hereon, having a bearing of 602°18'23"W and are referenced to Specified Control Points 01919880005 and 01919750705, MTM Zone 9 (79°30' West Longitude) NAD-83 (original).

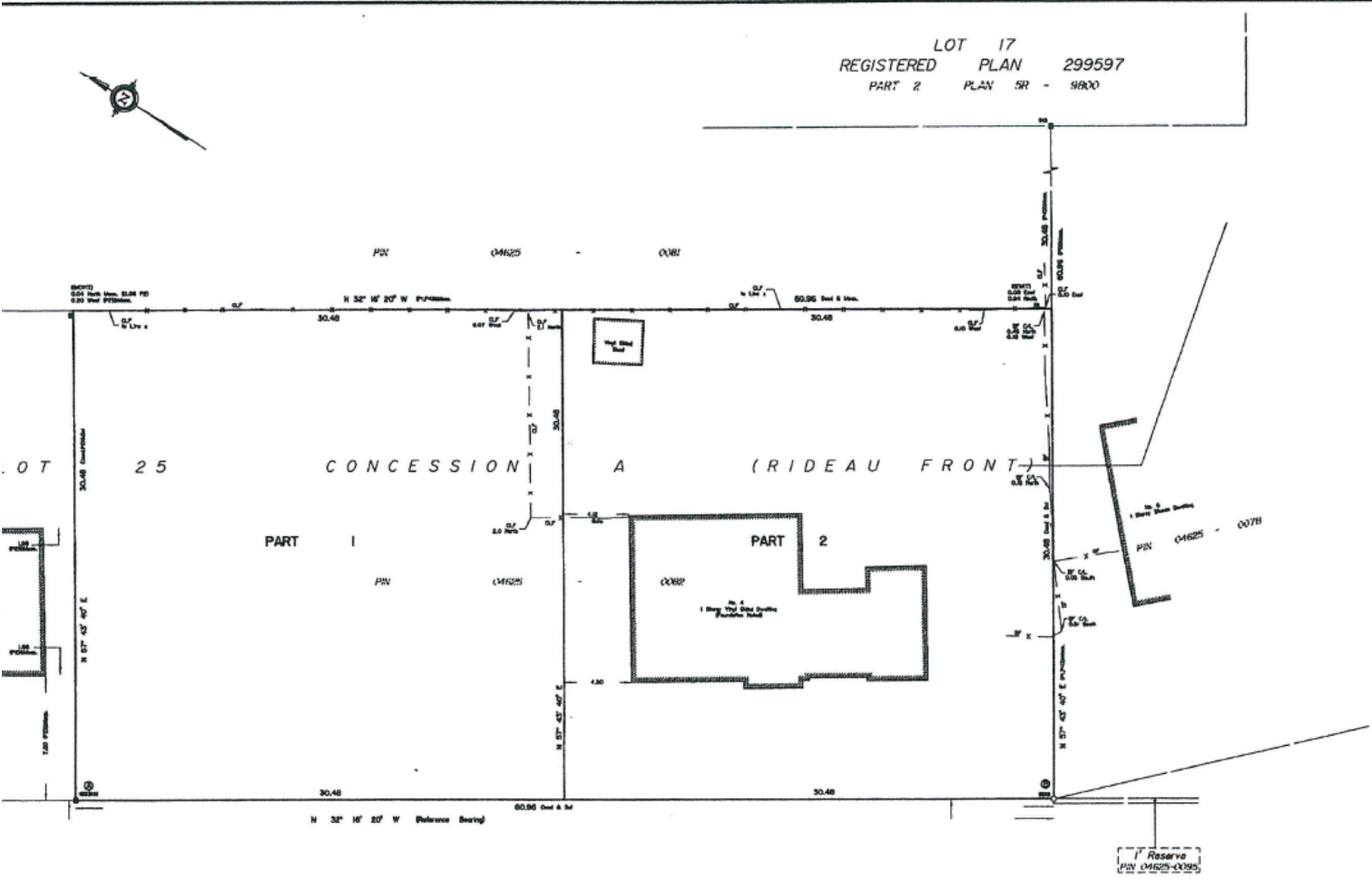
For bearing comparisons, a station of 0°21'20" counter-clockwise was applied to bearings on P1 & P4, a station of 0°23'20" counter-clockwise was applied to bearings on P2.

Coordinates are derived from Can-Net 2015 Real Time Network GPS observations referenced to Specified Control Points 01919880005 and 01919750705, MTM Zone 9 (79°30' West Longitude) NAD-83 (original).

Coordinate values are to urban accuracy in accordance with O. Reg. 216/10.

01919880005	Northing	6027191.20	Easting	361488.76
01919750705	Northing	6016816.53	Easting	360668.84
Point A	Northing	Easting		
Point B	Northing	Easting		

Caution: Coordinates cannot, in themselves, be used to re-establish corners or boundaries shown on this plan.



Pineglan Crescent