

METRIC
DISTANCES AND COORDINATES SHOWN ON THIS PLAN ARE IN METRES
AND CAN BE CONVERTED TO FEET BY DIVIDING BY 0.3048

I REQUIRE THIS PLAN TO BE DEPOSITED UNDER THE LAND TITLES ACT.

DATE 2022/10/12

DATE October 12, 2022

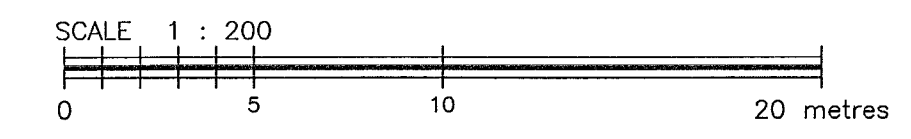
REPRESENTATIVE FOR LAND REGISTRAR FOR THE LAND TITLES DIVISION OF OTTAWA - CARLETON (N° 4)

JOHN H. GUTRI, O.L.S.

PLAN 4R-34977
RECEIVED AND DEPOSITED

SCHEDULE			
PART	PART OF LOT	PLAN/CON	ALL OF PIN
1	33, 34 & 60 (SOUTH OF SALISBURY STREET) AND WILLIAM STREET (AS CLOSED BY INST. NS193305)		
2	33 (SOUTH OF SALISBURY STREET) AND WILLIAM STREET (AS CLOSED BY INST. NS193305)		
3	33 & 34 (SOUTH OF SALISBURY STREET) AND 35 (EAST OF WILLIAM STREET) AND WILLIAM STREET (AS CLOSED BY INST. NS193305)		
4	34 (SOUTH OF SALISBURY STREET) AND 35 (EAST OF WILLIAM STREET) AND WILLIAM STREET (AS CLOSED BY INST. NS193305)		148
5	34 & 60 (SOUTH OF SALISBURY STREET) AND 35 & 61 (EAST OF WILLIAM STREET) AND WILLIAM STREET (AS CLOSED BY INST. NS193305)		04533-2307
6	60 (SOUTH OF SALISBURY STREET) AND 61 (EAST OF WILLIAM STREET) AND WILLIAM STREET (AS CLOSED BY INST. NS193305)		
7	17	CONCESSION 2	
8	60 (SOUTH OF SALISBURY STREET) AND 61 (EAST OF WILLIAM STREET) AND WILLIAM STREET (AS CLOSED BY INST. NS193305)		148
9	17	CONCESSION 2	
10			

PLAN OF SURVEY OF
LOTS 33, 34 & 60
(SOUTH OF SALISBURY STREET) AND
LOTS 35 & 61
(EAST OF WILLIAM STREET) AND
PART OF WILLIAM STREET
(CLOSED BY INST. NS193305)
REGISTERED PLAN 148
AND PART OF LOT 17
CONCESSION 2
GEOGRAPHIC TOWNSHIP OF HUNTLEY
CITY OF OTTAWA



FAIRHALL, MOFFATT & WOODLAND LIMITED
ONTARIO LAND SURVEYORS

- NOTES**
- BEARINGS ARE GRID, DERIVED FROM OBSERVED REFERENCE POINTS (618) AND (2) BY REAL TIME NETWORK OBSERVATIONS AND ARE REFERRED TO THE CENTRAL MERIDIAN, 76°30'W LONGITUDE MTM ZONE 9, NAD83 ORIGINAL.
 - DISTANCES ARE GROUND AND CAN BE CONVERTED TO GRID BY MULTIPLYING BY THE COMBINED SCALE FACTOR 0.999907.

- LEGEND**
- - SURVEY MONUMENT SET (M) - MEASURED
 - - SURVEY MONUMENT FOUND (S) - SET
 - SIB - STANDARD IRON BAR (S) - SET
 - SSIB - SHORT STANDARD IRON BAR (S) - SET
 - IB - IRON BAR
 - CP - CONCRETE PIN
 - (P1) - PLAN 5R-6694
 - (P2) - REGISTERED PLAN 148
 - (P3) - PLAN 4R-22879
 - (P4) - PLAN 4R-26877
 - (P5) - PLAN 4M-1333
 - (P6) - PLAN 4R-31625
 - (WIT) - WITNESS
 - (1319) - W. J. WEBSTER, O.L.S.
 - (857) - FAIRHALL, MOFFATT & WOODLAND LTD., O.L.S.
 - (PAR) - PAUL A. RIDDELL LTD., O.L.S.
 - (SU) - SOURCE UNKNOWN
 - ⊙ UP - UTILITY POLE

SURVEYOR'S CERTIFICATE

I CERTIFY THAT:

- THIS SURVEY AND PLAN ARE CORRECT AND IN ACCORDANCE WITH THE SURVEYS ACT, THE SURVEYORS ACT, THE LAND TITLES ACT AND THE REGULATIONS MADE UNDER THEM.
- THE SURVEY WAS COMPLETED ON OCTOBER 5, 2022

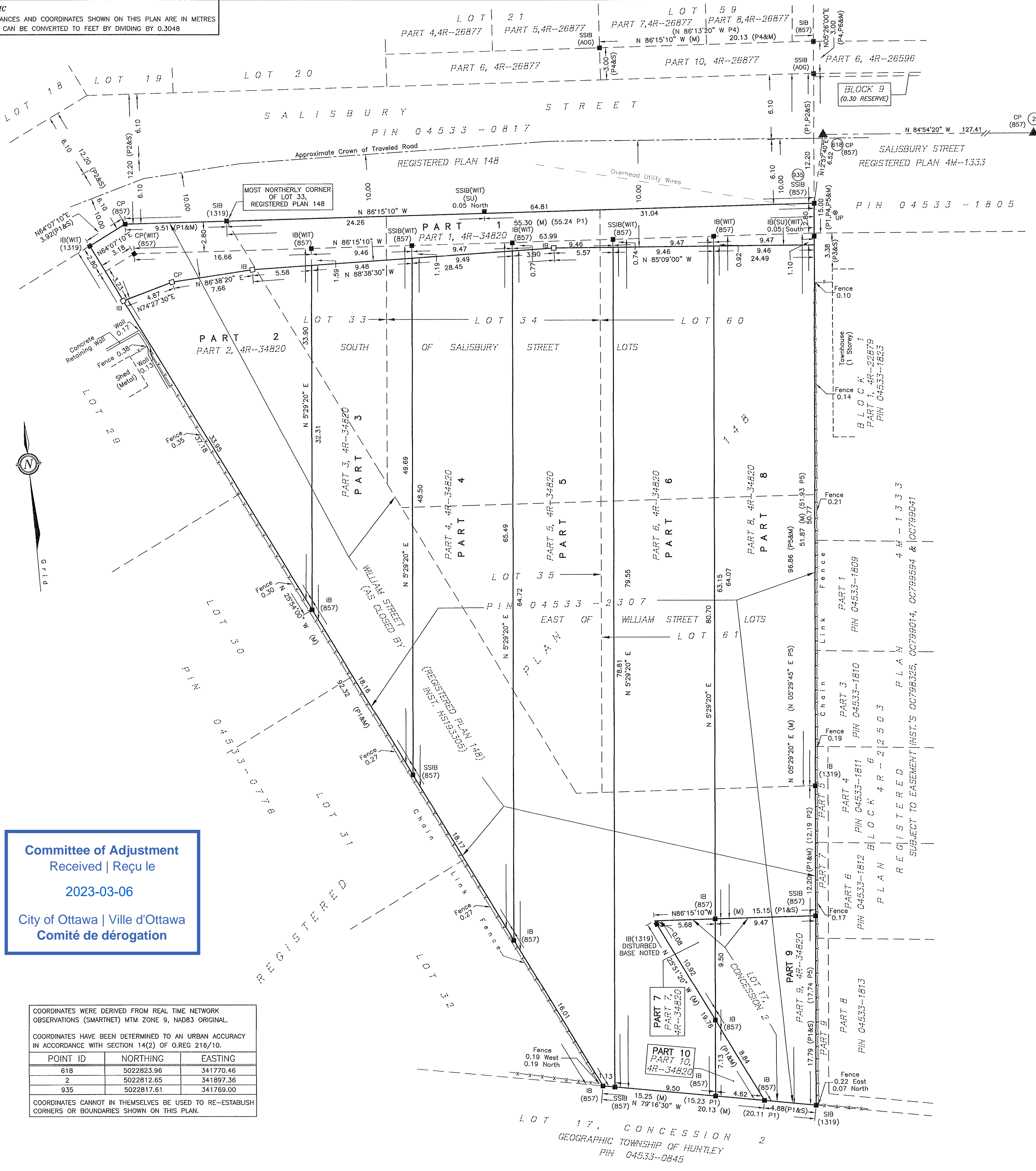
DATE 2022/10/12

JOHN H. GUTRI
ONTARIO LAND SURVEYOR

THIS PLAN OF SURVEY RELATES TO AOLS PLAN SUBMISSION FORM NUMBER V-34792

Fairhall Moffatt & Woodland
ONTARIO LAND SURVEYORS
Surveying and Land Information Services
100-800 TERRY FOX DRIVE, KANATA, ONTARIO K2L 4B6
TEL: (613) 591-2580 FAX: (613) 591-1495
www.fmw.on.ca

JOB No.
A B 2 4 2 0 0
E 341742, N 5022790
REFERENCE No.
28 - 148 HUNTLEY
S:\JOBS\482020\DWGS 2022-10-09
rp242ab_v4.dwg (kb)



Committee of Adjustment
Received | Reçu le
2023-03-06
City of Ottawa | Ville d'Ottawa
Comité de dérogation

COORDINATES WERE DERIVED FROM REAL TIME NETWORK OBSERVATIONS (SMARTNET) MTM ZONE 9, NAD83 ORIGINAL.

COORDINATES HAVE BEEN DETERMINED TO AN URBAN ACCURACY IN ACCORDANCE WITH SECTION 14(2) OF O.REG 216/10.

POINT ID	NORTHING	EASTING
618	5022823.96	341770.46
2	5022812.65	341897.36
935	5022817.61	341769.00

COORDINATES CANNOT IN THEMSELVES BE USED TO RE-ESTABLISH CORNERS OR BOUNDARIES SHOWN ON THIS PLAN.



CERTIFICATE OF SURVEYOR

Re: Lots 33, 34 & 60 (South of Salisbury Street) AND Lots 35 & 61 (East of William Street) AND Part of William Street (closed by Inst. NS193305), Registered Plan 148 And Part of Lot 17, Concession 2, Geography Township of Huntley, City of Ottawa

This is to certify that the area of each PART shown on Plan 4R-34977 is as follows:

PART	AREA (sq.m.)
1	282.6
2	295.3
3	382.2
4	535.9
5	687.0
6	723.1
7	27.0
8	596.9
9	146.4
10	16.4

Dated at Ottawa, Ontario

This 18th day of October, 2022

John H. Gurti

Ontario Land Surveyor

Job No. AB24200

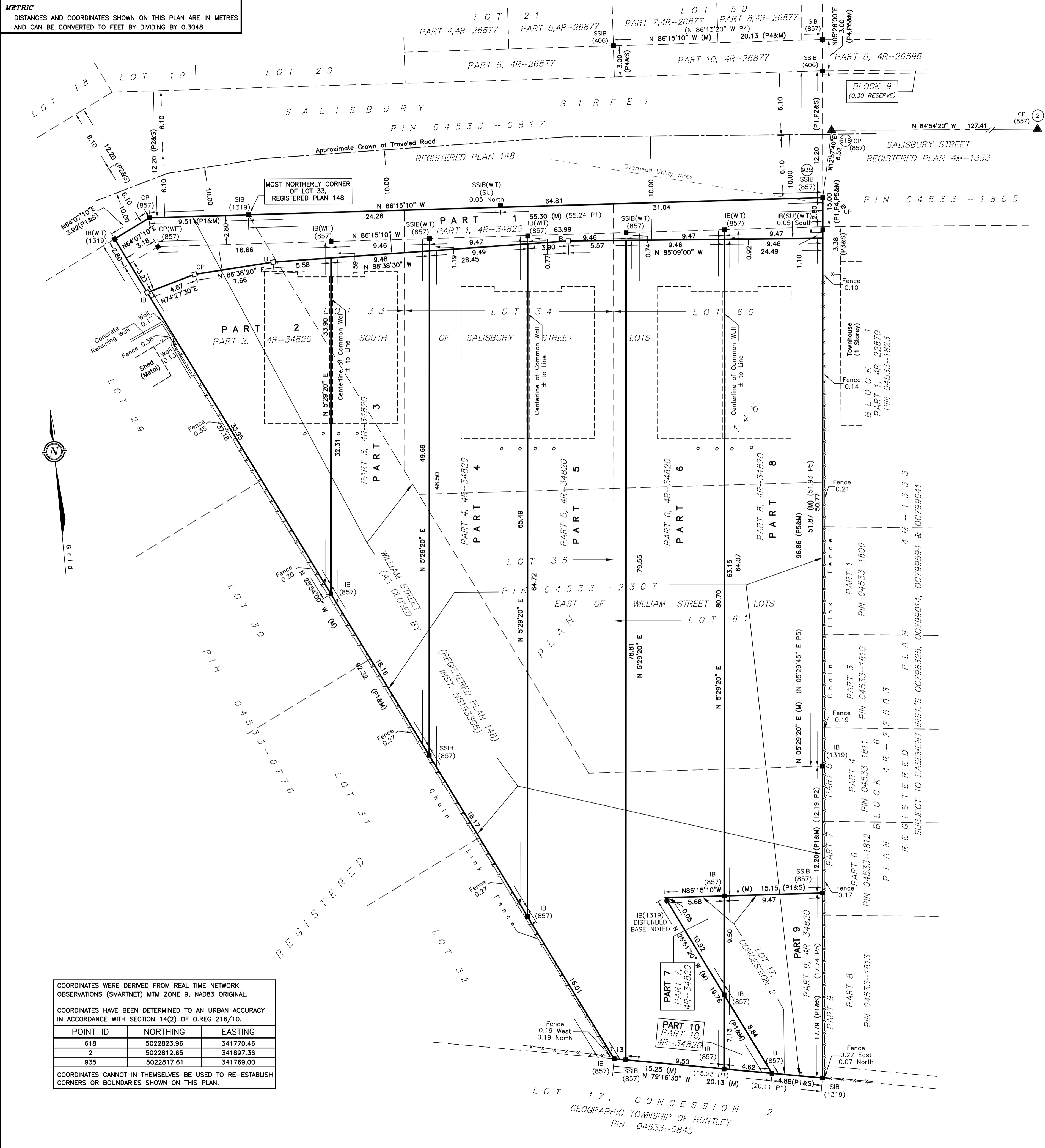
Ref No. 28-148 HUNTLEY

Surveying and Land Information Services

METRIC
DISTANCES AND COORDINATES SHOWN ON THIS PLAN ARE IN METRES
AND CAN BE CONVERTED TO FEET BY DIVIDING BY 0.3048

I REQUIRE THIS PLAN TO BE DEPOSITED UNDER THE LAND TITLES ACT.
DATE _____
REPRESENTATIVE FOR LAND REGISTRAR FOR THE LAND TITLES DIVISION OF OTTAWA - CARLETON (N° 4)
DATE _____
JOHN H. GUTRI, O.L.S.

PLAN 4R-
RECEIVED AND DEPOSITED
DATE _____
REPRESENTATIVE FOR LAND REGISTRAR FOR THE LAND TITLES DIVISION OF OTTAWA - CARLETON (N° 4)
DATE _____
JOHN H. GUTRI, O.L.S.



SCHEDULE			
PART	PART OF LOT	PLAN/CON	ALL OF PIN
1	33, 34 & 60 (SOUTH OF SALISBURY STREET) AND WILLIAM STREET (AS CLOSED BY INST. NS193305)		
2	33 (SOUTH OF SALISBURY STREET) AND WILLIAM STREET (AS CLOSED BY INST. NS193305)		
3	33 & 34 (SOUTH OF SALISBURY STREET) AND 35 (EAST OF WILLIAM STREET) AND WILLIAM STREET (AS CLOSED BY INST. NS193305)		
4	34 (SOUTH OF SALISBURY STREET) AND 35 (EAST OF WILLIAM STREET) AND WILLIAM STREET (AS CLOSED BY INST. NS193305)	148	04533-2307
5	34 & 60 (SOUTH OF SALISBURY STREET) AND 35 & 61 (EAST OF WILLIAM STREET) AND WILLIAM STREET (AS CLOSED BY INST. NS193305)		
6	60 (SOUTH OF SALISBURY STREET) AND 61 (EAST OF WILLIAM STREET) AND WILLIAM STREET (AS CLOSED BY INST. NS193305)		
7	17	CONCESSION 2	
8	60 (SOUTH OF SALISBURY STREET) AND 61 (EAST OF WILLIAM STREET) AND WILLIAM STREET (AS CLOSED BY INST. NS193305)	148	
9			
10	17	CONCESSION 2	

PLAN OF SURVEY OF
LOTS 33, 34 & 60
(SOUTH OF SALISBURY STREET) AND
LOTS 35 & 61
(EAST OF WILLIAM STREET) AND
PART OF WILLIAM STREET
(CLOSED BY INST. NS193305)
REGISTERED PLAN 148
AND PART OF LOT 17
CONCESSION 2
GEOGRAPHIC TOWNSHIP OF HUNTLEY
CITY OF OTTAWA



FAIRHALL, MOFFATT & WOODLAND LIMITED
ONTARIO LAND SURVEYORS

- NOTES**
- BEARINGS ARE GRID, DERIVED FROM OBSERVED REFERENCE POINTS (618) AND (2) BY REAL TIME NETWORK OBSERVATIONS AND ARE REFERRED TO THE CENTRAL MERIDIAN, 76°30'W LONGITUDE MTM ZONE 9, NAD83 ORIGINAL.
 - DISTANCES ARE GROUND AND CAN BE CONVERTED TO GRID BY MULTIPLYING BY THE COMBINED SCALE FACTOR 0.999907.

- LEGEND**
- - SURVEY MONUMENT SET (M) - MEASURED
 - - SURVEY MONUMENT FOUND (S) - SET
 - SIB - STANDARD IRON BAR PIN - PROPERTY IDENTIFIER NUMBER
 - SSIB - SHORT STANDARD IRON BAR @ UP - UTILITY POLE
 - IB - IRON BAR
 - CP - CONCRETE PIN
 - (P1) - PLAN 5R-6694
 - (P2) - REGISTERED PLAN 148
 - (P3) - PLAN 4R-22879
 - (P4) - PLAN 4R-26877
 - (P5) - PLAN 4M-1333
 - (P6) - PLAN 4R-31625
 - (WIT) - WITNESS
 - (1319) - W. J. WEBSTER, O.L.S.
 - (857) - FAIRHALL, MOFFATT & WOODLAND LTD., O.L.S.
 - (PAR) - PAUL A. RIDDELL LTD., O.L.S.
 - (SU) - SOURCE UNKNOWN

SURVEYOR'S CERTIFICATE
I CERTIFY THAT:
1. THIS SURVEY AND PLAN ARE CORRECT AND IN ACCORDANCE WITH THE SURVEYS ACT, THE SURVEYORS ACT, THE LAND TITLES ACT AND THE REGULATIONS MADE UNDER THEM.
2. THE SURVEY WAS COMPLETED ON OCTOBER 5, 2022

DATE _____ JOHN H. GUTRI
ONTARIO LAND SURVEYOR

THIS PLAN OF SURVEY RELATES TO AOLS PLAN SUBMISSION FORM NUMBER V-34792

COORDINATES WERE DERIVED FROM REAL TIME NETWORK OBSERVATIONS (SMARTNET) MTM ZONE 9, NAD83 ORIGINAL.

COORDINATES HAVE BEEN DETERMINED TO AN URBAN ACCURACY IN ACCORDANCE WITH SECTION 14(2) OF O.REG 216/10.

POINT ID	NORTHING	EASTING
618	5022823.96	341770.46
2	5022812.65	341897.36
935	5022817.61	341769.00

COORDINATES CANNOT IN THEMSELVES BE USED TO RE-ESTABLISH CORNERS OR BOUNDARIES SHOWN ON THIS PLAN.

Fairhall Moffatt & Woodland
LIMITED
ONTARIO LAND SURVEYORS
Ottawa

Surveying and Land Information Services
100-600 TERRY FOX DRIVE, KANATA, ONTARIO K2L 4B6
TEL: (613) 591-2390 FAX: (613) 591-1495
www.fmw.on.ca

JOB No.
A B 2 4 2 0 0
E 341742, N 5022790
REFERENCE No.
28 - 148 HUNTLEY
S:\085\AB2020\DWGS 2023-02-01
rp242ob_v4.dwg (kb)

LOT 17, CONCESSION 2
GEOGRAPHIC TOWNSHIP OF HUNTLEY
PIN 04533-0845