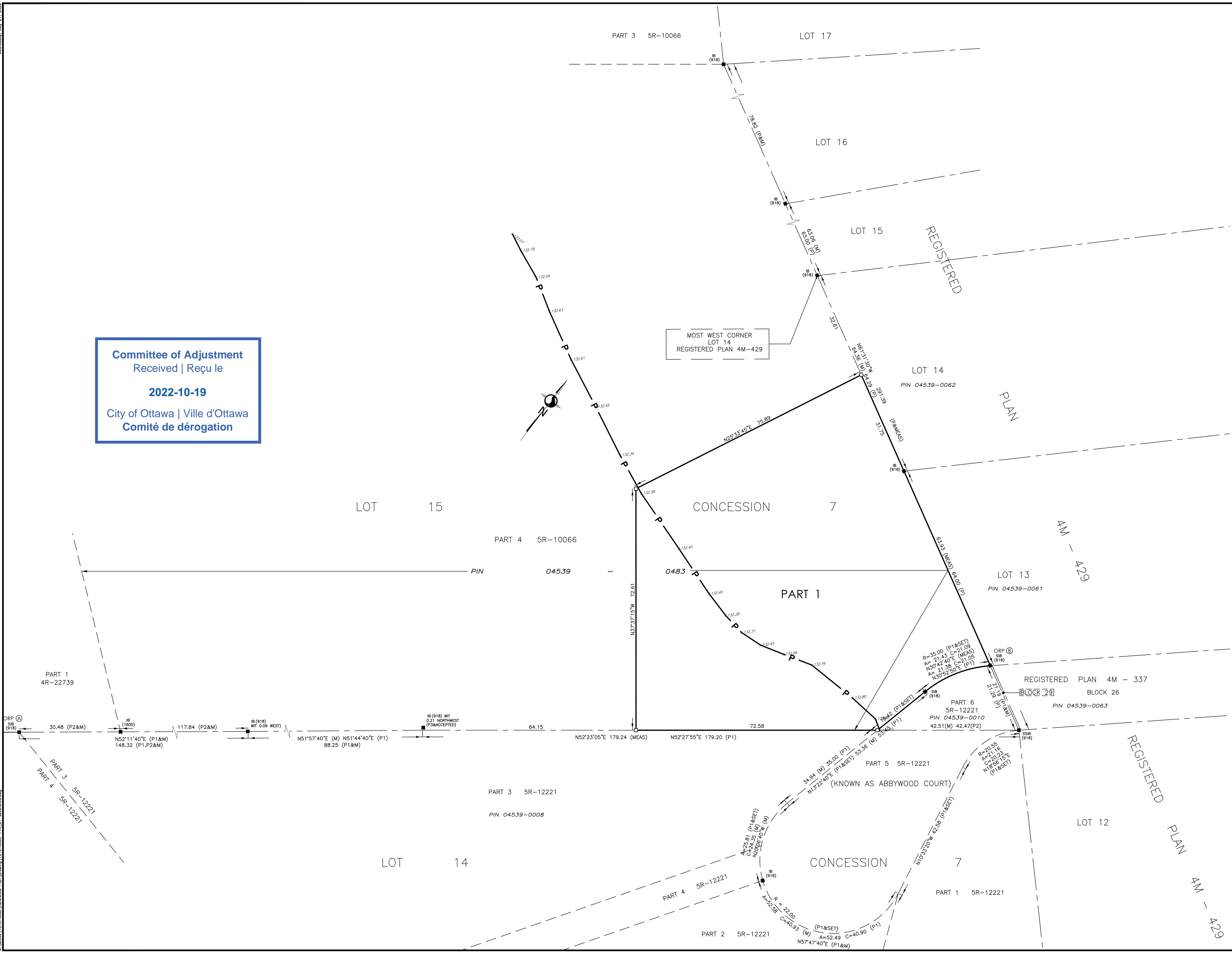


Wednesday, July 27, 2022
 W:\Projects\161614608\Reference_Plan\Drawings\161614608-114_01-2022.dwg

Committee of Adjustment
 Received | Reçu le

2022-10-19
 City of Ottawa | Ville d'Ottawa
 Comité de dérogation



SCHEDULE			
PART	LOT	CONCESSION	PIN
1	PART OF 15	7	PART OF 04539-0483

PLAN OF SURVEY of
PART OF LOT 15
CONCESSION 7
 (GEOGRAPHIC TOWNSHIP OF HUNTLEY)
CITY OF OTTAWA

Scale 1:500

 THE INTENDED PLOT SIZE OF THIS PLAN IS 610mm IN WIDTH BY 915mm IN HEIGHT WHEN PLOTTED AT A SCALE OF 1:500m

METRIC CONVERSION
 DISTANCES AND COORDINATES SHOWN ON THIS PLAN ARE IN METRES AND CAN BE CONVERTED TO FEET BY DIVIDING BY 0.3048

GRID SCALE CONVERSION
 DISTANCES ARE GROUND AND CAN BE CONVERTED TO GRID BY MULTIPLYING BY THE COMBINED SCALE FACTOR OF 0.99993.

BEARING NOTE
 BEARINGS ARE GRID. DERIVED FROM THE CAN-NET VRS NETWORK GPS OBSERVATIONS ON NCC HORIZONTAL CONTROL MONUMENTS 19773035 AND 19680191, CENTRAL MERIDIAN, 76° 30' WEST LONGITUDE MTM ZONE 9, NAD83 (ORIGINAL).
 19773035 N:5006060.42 E:324888.04
 19680191 N:5033354.26 E:388064.94
 FOR COMPARISON PURPOSES A ROTATION COUNTER-CLOCKWISE OF 0°21'20" WAS APPLIED TO BEARINGS SHOWN ON P1.

LEGEND

SYMBOL	DENOTES	FOUND MONUMENTS
IB	IRON BAR	SET MONUMENTS
IB#	ROUND IRON BAR	IRON BAR
SIB	STANDARD IRON BAR	STANDARD IRON BAR
SSIB	SHORT STANDARD IRON BAR	SHORT STANDARD IRON BAR
CC	CUT CROSS	CUT CROSS
CP	CONCRETE PIN	CONCRETE PIN
WIT	WITNESS	WITNESS
PIN	PROPERTY IDENTIFICATION NUMBER	PROPERTY IDENTIFICATION NUMBER
MEAS	MEASURED	MEASURED
PROPP	PROPORTIONED	PROPORTIONED
OU	ORIGIN UNKNOWN	ORIGIN UNKNOWN
SG	STANTEC GEOMATICS LTD.	STANTEC GEOMATICS LTD.
ORP	OBSERVED REFERENCE POINT	OBSERVED REFERENCE POINT
P1	REGISTERED PLAN 4M-429	REGISTERED PLAN 4M-429
P2	PLAN 5R-12221	PLAN 5R-12221
P3	PLAN 4R-22739	PLAN 4R-22739
P4	PLAN BY FAW DATED MARCH 12, 2018	PLAN BY FAW DATED MARCH 12, 2018

OBSERVED REFERENCE POINTS DERIVED FROM THE CAN-NET VRS NETWORK GPS OBSERVATIONS ON NCC HORIZONTAL CONTROL MONUMENTS 19773035 AND 19680191, CENTRAL MERIDIAN, 76° 30' WEST LONGITUDE MTM ZONE 9, NAD83 (ORIGINAL), COORDINATES TO URBAN ACCURACY PER SEC 14(2) OF O.REG. 216/10

ORP ID	NORTHING	EASTING
①	5016856.04	337701.06
②	5017120.84	338011.09

COORDINATES CANNOT, IN THEMSELVES, BE USED TO RE-ESTABLISH CORNERS OR BOUNDARIES SHOWN ON THIS PLAN.

SURVEYOR'S CERTIFICATE
 I CERTIFY THAT:
 1. THIS SURVEY AND PLAN ARE CORRECT AND IN ACCORDANCE WITH THE SURVEYS ACT, THE SURVEYORS ACT AND THE LAND TITLES ACT AND THE REGULATIONS MADE UNDER THEM.
 2. THE SURVEY WAS COMPLETED ON THE DAY OF . 2022.

DATE _____ FRANCIS LAU
 ONTARIO LAND SURVEYOR

THIS PLAN OF SURVEY RELATES TO AOLS PLAN SUBMISSION FORM NUMBER V-28727.

Stantec
 CANADA LANDS SURVEYORS
 ONTARIO LAND SURVEYORS
 1331 CLYDE AVENUE, SUITE 300
 OTTAWA, ONTARIO K2C 3G4
 TEL. 613.722.4420
 stantec.com

DRAWN: ME CHECKED: CK PM: FL FIELD: CA PROJECT NO.: 161614608-114