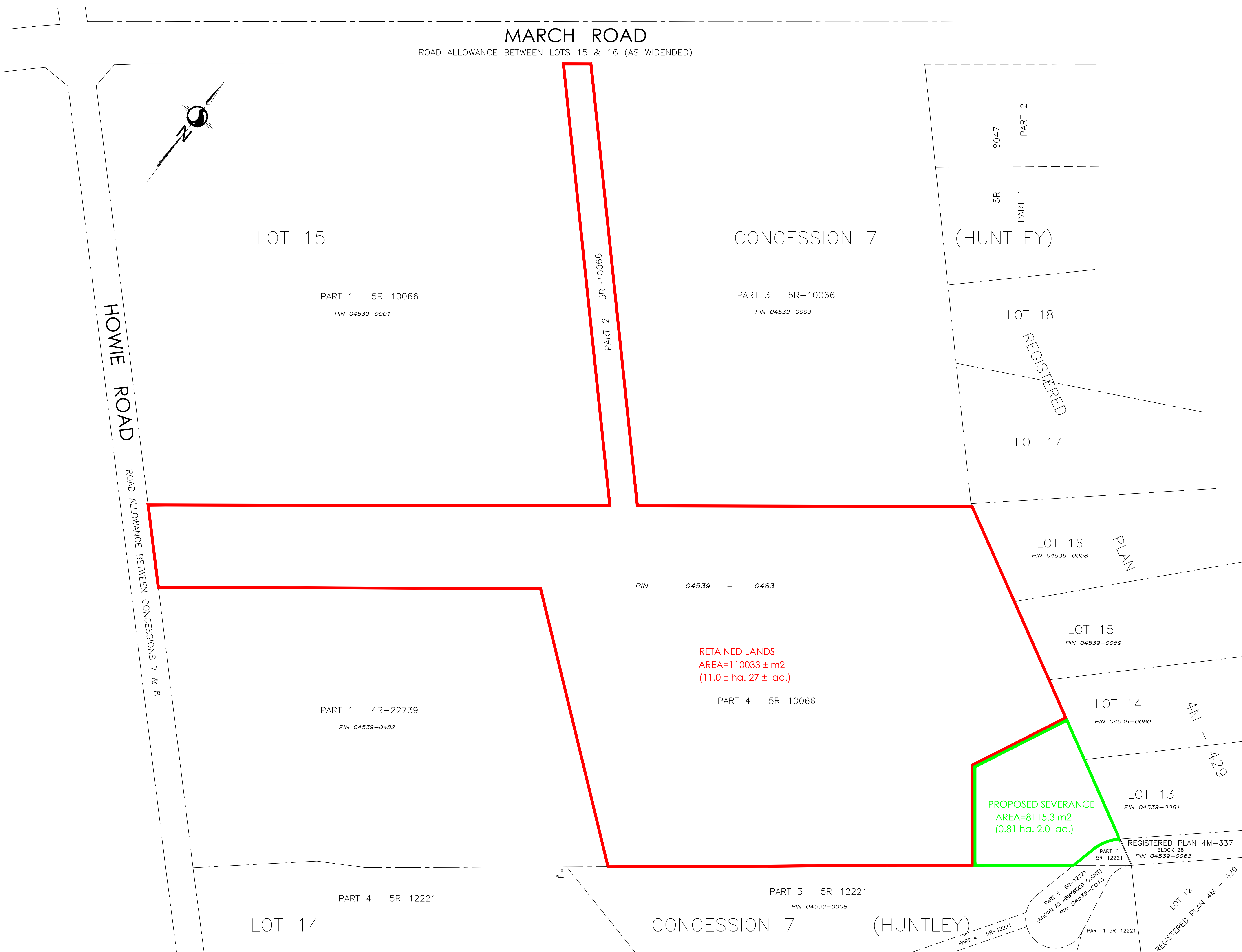


Wednesday, October 19, 2022
W:\Projects\161614608\Reference_Plan\Drawings\161614608-114_ssketch.dwg



MARCH ROAD

ROAD ALLOWANCE BETWEEN LOTS 15 & 16 (AS WIDENED)

LOT 15

PART 1 5R-10066
PIN 04539-0001

PART 2 5R-10066

CONCESSION 7 (HUNTLEY)

PART 3 5R-10066
PIN 04539-0003

8047 PART 2
5R PART 1

LOT 18

REGISTERED

LOT 17

LOT 16
PIN 04539-0058

PLAN

LOT 15
PIN 04539-0059

PART 1 4R-22739
PIN 04539-0482

PIN 04539 - 0483

RETAINED LANDS
AREA=110033 ± m2
(11.0 ± ha. 27 ± ac.)

PART 4 5R-10066

LOT 14
PIN 04539-0060

4M - 429

LOT 13
PIN 04539-0061

PROPOSED SEVERANCE
AREA=8115.3 m2
(0.81 ha. 2.0 ac.)

REGISTERED PLAN 4M-337
BLOCK 26
PIN 04539-0063

PART 4 5R-12221

PART 3 5R-12221
PIN 04539-0008

CONCESSION 7 (HUNTLEY)

PART 5 5R-12221
(KNOWN AS ABBYWOOD COURT)
PIN 04539-0010

PART 1 5R-12221

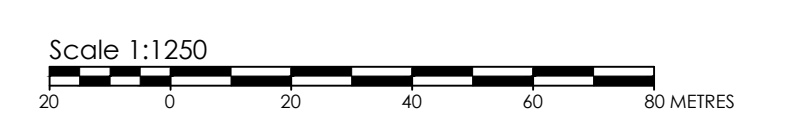
LOT 12
REGISTERED PLAN 4M - 429

LOT 14

SKETCH SHOWING PROPOSED SEVERANCE AND RETAINED LANDS

PIN 04539-0482

PART OF LOT 15
CONCESSION 7
(GEOGRAPHIC TOWNSHIP OF HUNTLEY)
CITY OF OTTAWA



Committee of Adjustment
Received | Reçu le
2022-10-19
City of Ottawa | Ville d'Ottawa
Comité de dérogation

Stantec
CANADA LAND SURVEYORS
ONTARIO LAND SURVEYORS
1331 CLYDE AVENUE, SUITE 300
OTTAWA, ONTARIO K2C 3G4
TEL. 613.722.4400
stantec.com
DRAWN: ME | CHECKED: - | PM: FL | FIELD: - | PROJECT No.: 161614608-114