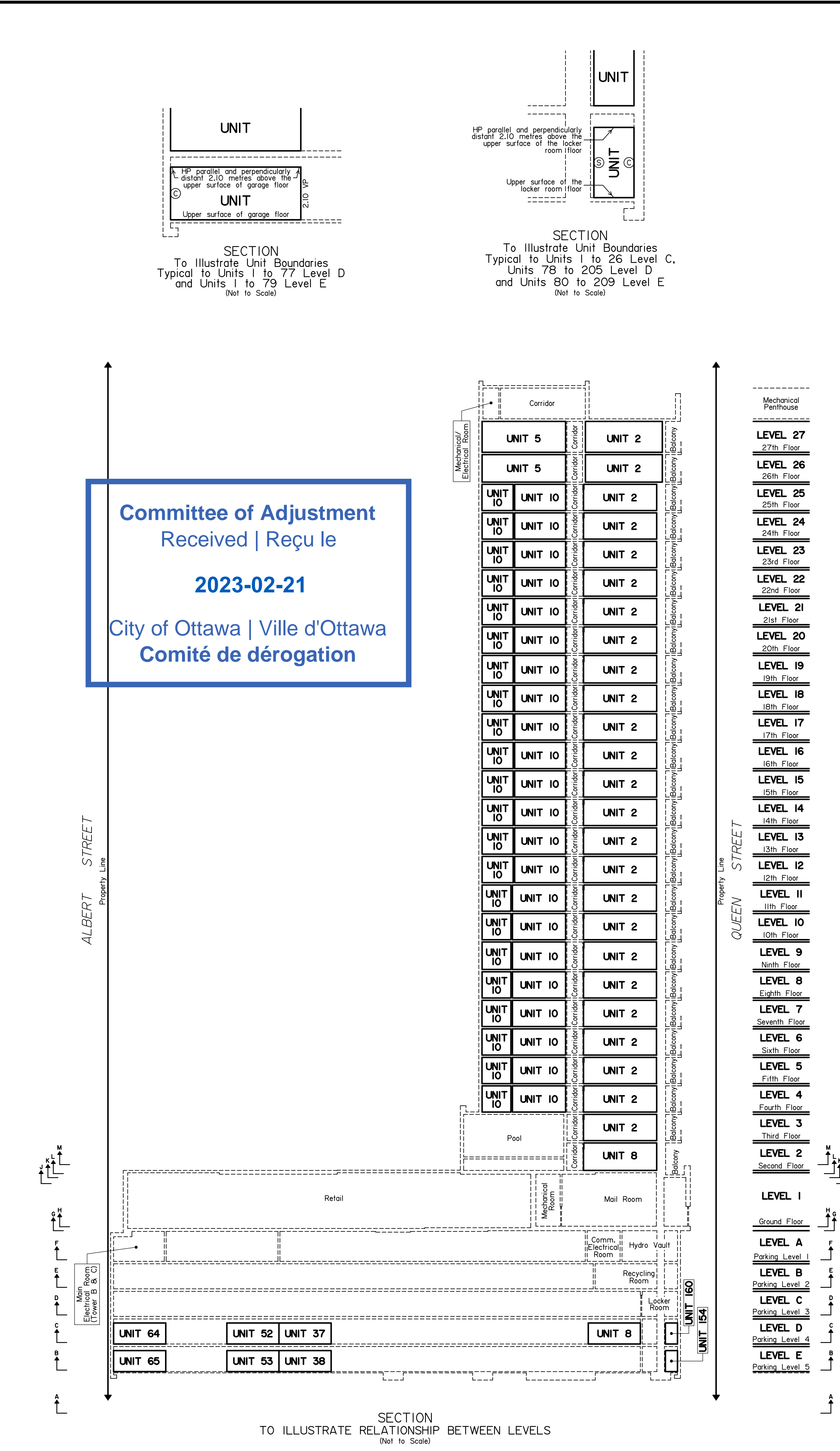
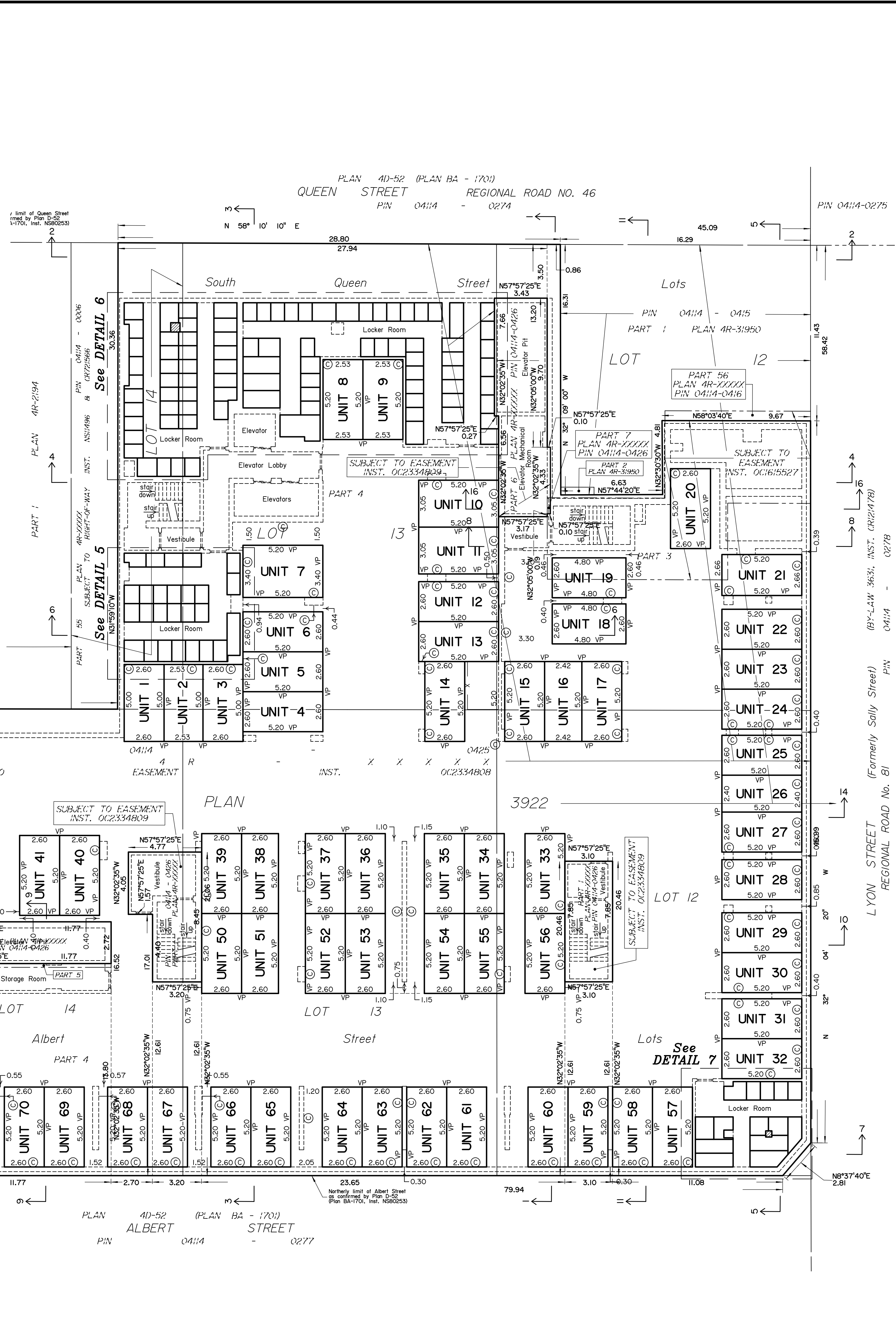
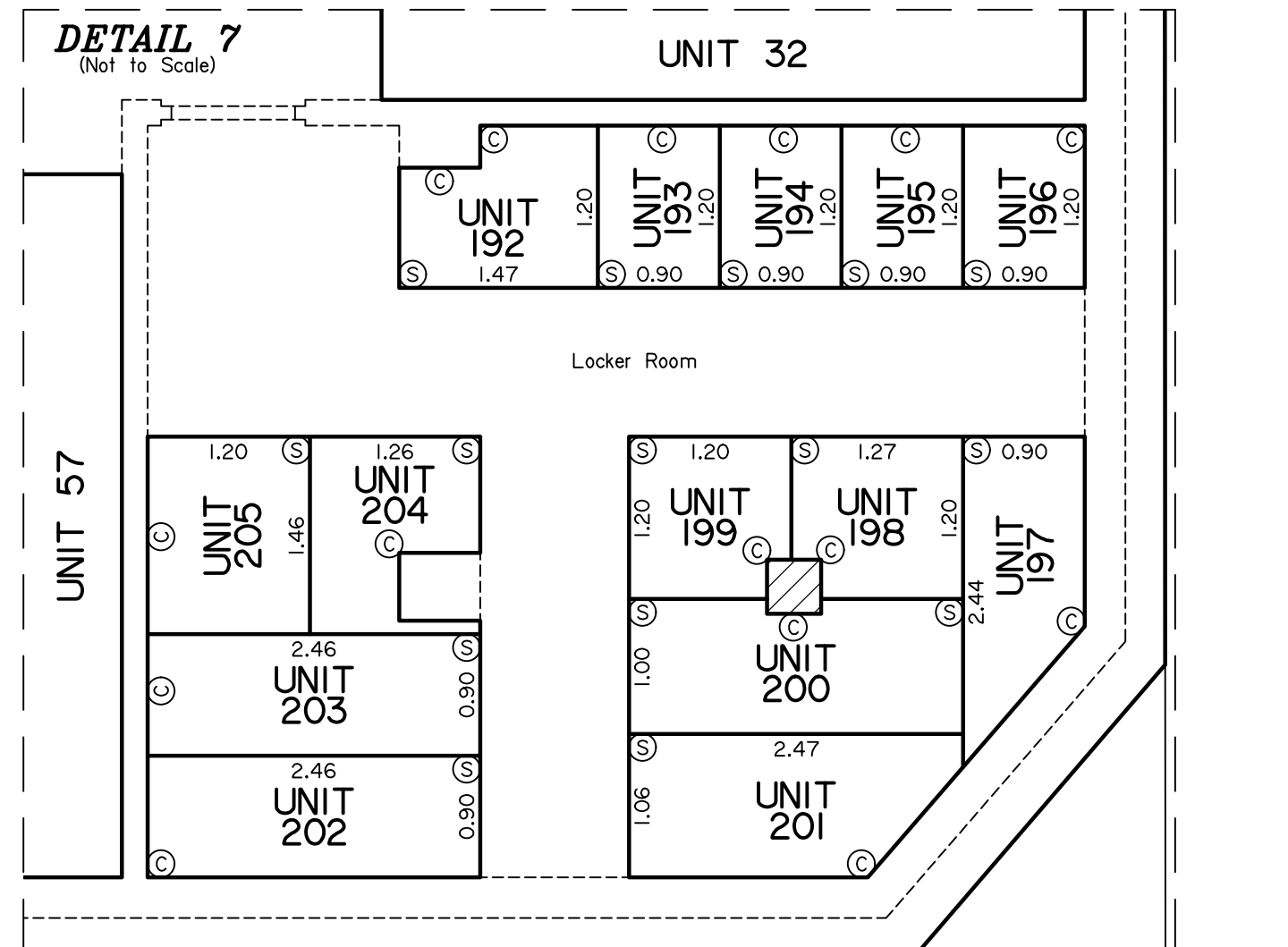
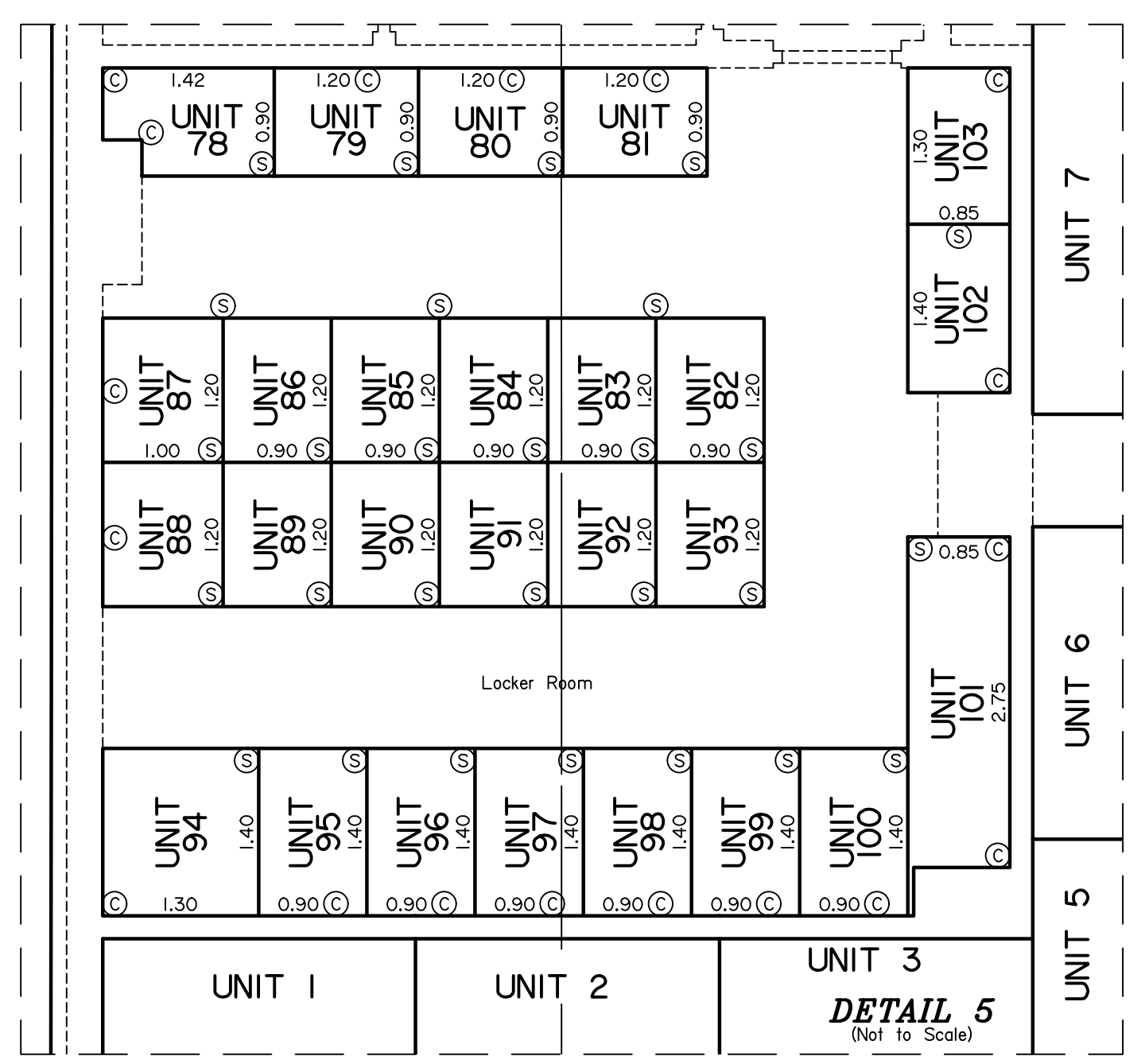


REGISTERED IN THE LAND REGISTRY OFFICE FOR THE
 LAND TITLES DIVISION OF OTTAWA-CARLETON No. 4
 AT _____ O'CLOCK ON THE _____
 DAY OF _____ 2022
 REPRESENTATIVE FOR THE LAND REGISTRAR



Committee of Adjustment
 Received | Reçu le
 2023-02-21
 City of Ottawa | Ville d'Ottawa
 Comité de dérogation

SURVEYOR'S CERTIFICATE
 I CERTIFY THAT:
 1. This survey and plan are correct and in accordance with the Condominium Act, 1998, the Surveys Act, the Surveyors Act and the Land Titles Act and the regulations made under them.
 2. The survey was completed on the ____ day of _____, 2022.
 3. The diagrams of the units shown on this plan are substantially accurate.

Dated this ____ day of _____, 2022
 V. Andrew Shepley
 Ontario Land Surveyor

DECLARATION REGISTERED AS NUMBER _____
PLAN OF SURVEY OF
GENERAL CONFIGURATION OF BUILDING AND EXTENT OF UNIT
LIMITS ON LEVELS X, X AND X
 Surveyed by Annis, O'Sullivan, Vollebek Ltd.

Scale 1 : 150
 Metric
 DISTANCES AND COORDINATES SHOWN ON THIS PLAN ARE IN METRES AND CAN BE CONVERTED TO FEET BY DIVIDING BY 0.3048

CERTIFICATE OF DECLARANT
 THIS IS TO CERTIFY THAT the property included in this plan has been laid out into units and common elements in accordance with our instructions.
 DECLARANT: XXXXXXXX INC.
 Dated this ____ day of _____, 2022.
 per XXXXXXXX (Authorized Signing Officer)
 I have authority to bind the Corporation.

NOTES AND LEGEND

- Property limit
- Unit boundary
- Common Elements, NOT Part of Unit
- Face of structural walls
- Unit boundary below
- Film Floor
- Vertical Plane
- Horizontal Plane
- Backside surface of drywall
- Upper unfinished surface of plywood subfloor
- Upper unfinished surface of drywall

See SECTION A-A

LEVEL 27
27th Floor
 LEVEL 26
26th Floor
 LEVEL 25
25th Floor
 LEVEL 24
24th Floor
 LEVEL 23
23rd Floor
 LEVEL 22
22nd Floor
 LEVEL 21
21st Floor
 LEVEL 20
20th Floor
 LEVEL 19
19th Floor
 LEVEL 18
18th Floor
 LEVEL 17
17th Floor
 LEVEL 16
16th Floor
 LEVEL 15
15th Floor
 LEVEL 14
14th Floor
 LEVEL 13
13th Floor
 LEVEL 12
12th Floor
 LEVEL 11
11th Floor
 LEVEL 10
10th Floor
 LEVEL 9
9th Floor
 LEVEL 8
8th Floor
 LEVEL 7
7th Floor
 LEVEL 6
6th Floor
 LEVEL 5
5th Floor
 LEVEL 4
4th Floor
 LEVEL 3
3rd Floor
 LEVEL 2
2nd Floor
 LEVEL 1
Ground Floor
 LEVEL A
Parking Level
 LEVEL B
Parking Level
 LEVEL C
Parking Level
 LEVEL D
Parking Level
 LEVEL E
Parking Level

The monuments controlling the extent and location of the units are the walls, the floors and the ceilings as more particularly described in the Declaration (See Schedule C).
 Bearings are astronomic, derived from the XXXXXXXX limit of XXXXXXXX, shown to be XXXXXXXX on Registered Plan 4M-XXXXX.

ANNIS, O'SULLIVAN, VOLLEBEK LTD.
 14 Concourse East, Suite 500
 Ottawa, Ontario K1E 1S8
 Phone: (613) 727-0850 / Fax: (613) 727-1079
 Email: annis@anniso.com
 Land Surveyors (Reg. No. 2002-19, 2002-20, 2002-21, 2002-22, 2002-23, 2002-24, 2002-25, 2002-26, 2002-27, 2002-28, 2002-29, 2002-30, 2002-31, 2002-32, 2002-33, 2002-34, 2002-35, 2002-36, 2002-37, 2002-38, 2002-39, 2002-40, 2002-41, 2002-42, 2002-43, 2002-44, 2002-45, 2002-46, 2002-47, 2002-48, 2002-49, 2002-50, 2002-51, 2002-52, 2002-53, 2002-54, 2002-55, 2002-56, 2002-57, 2002-58, 2002-59, 2002-60, 2002-61, 2002-62, 2002-63, 2002-64, 2002-65, 2002-66, 2002-67, 2002-68, 2002-69, 2002-70, 2002-71, 2002-72, 2002-73, 2002-74, 2002-75, 2002-76, 2002-77, 2002-78, 2002-79, 2002-80, 2002-81, 2002-82, 2002-83, 2002-84, 2002-85, 2002-86, 2002-87, 2002-88, 2002-89, 2002-90, 2002-91, 2002-92, 2002-93, 2002-94, 2002-95, 2002-96, 2002-97, 2002-98, 2002-99, 2002-100, 2002-101, 2002-102, 2002-103, 2002-104, 2002-105, 2002-106, 2002-107, 2002-108, 2002-109, 2002-110, 2002-111, 2002-112, 2002-113, 2002-114, 2002-115, 2002-116, 2002-117, 2002-118, 2002-119, 2002-120, 2002-121, 2002-122, 2002-123, 2002-124, 2002-125, 2002-126, 2002-127, 2002-128, 2002-129, 2002-130, 2002-131, 2002-132, 2002-133, 2002-134, 2002-135, 2002-136, 2002-137, 2002-138, 2002-139, 2002-140, 2002-141, 2002-142, 2002-143, 2002-144, 2002-145, 2002-146, 2002-147, 2002-148, 2002-149, 2002-150, 2002-151, 2002-152, 2002-153, 2002-154, 2002-155, 2002-156, 2002-157, 2002-158, 2002-159, 2002-160, 2002-161, 2002-162, 2002-163, 2002-164, 2002-165, 2002-166, 2002-167, 2002-168, 2002-169, 2002-170, 2002-171, 2002-172, 2002-173, 2002-174, 2002-175, 2002-176, 2002-177, 2002-178, 2002-179, 2002-180, 2002-181, 2002-182, 2002-183, 2002-184, 2002-185, 2002-186, 2002-187, 2002-188, 2002-189, 2002-190, 2002-191, 2002-192, 2002-193, 2002-194, 2002-195, 2002-196, 2002-197, 2002-198, 2002-199, 2002-200, 2002-201, 2002-202, 2002-203, 2002-204, 2002-205, 2002-206, 2002-207)