

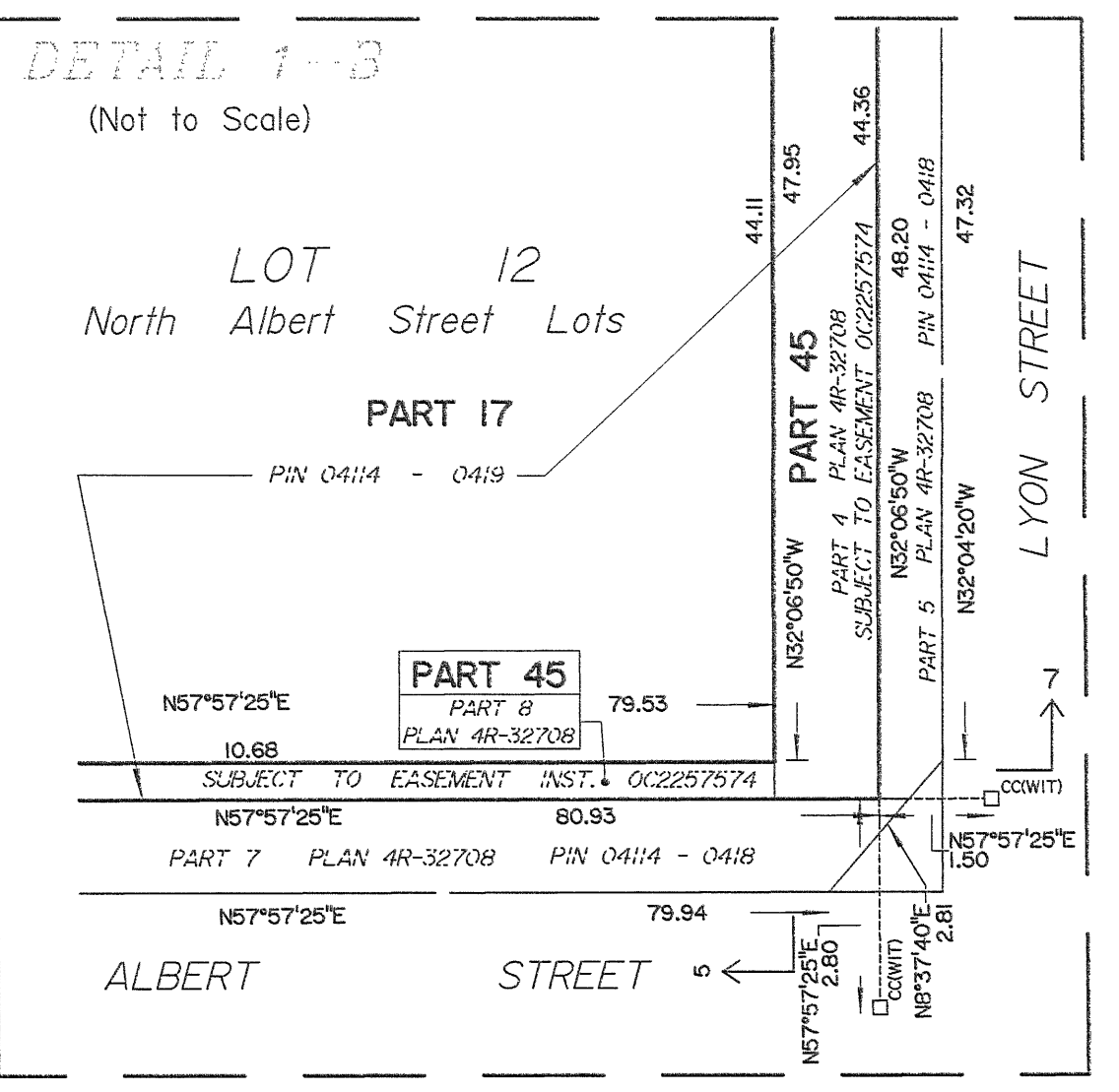
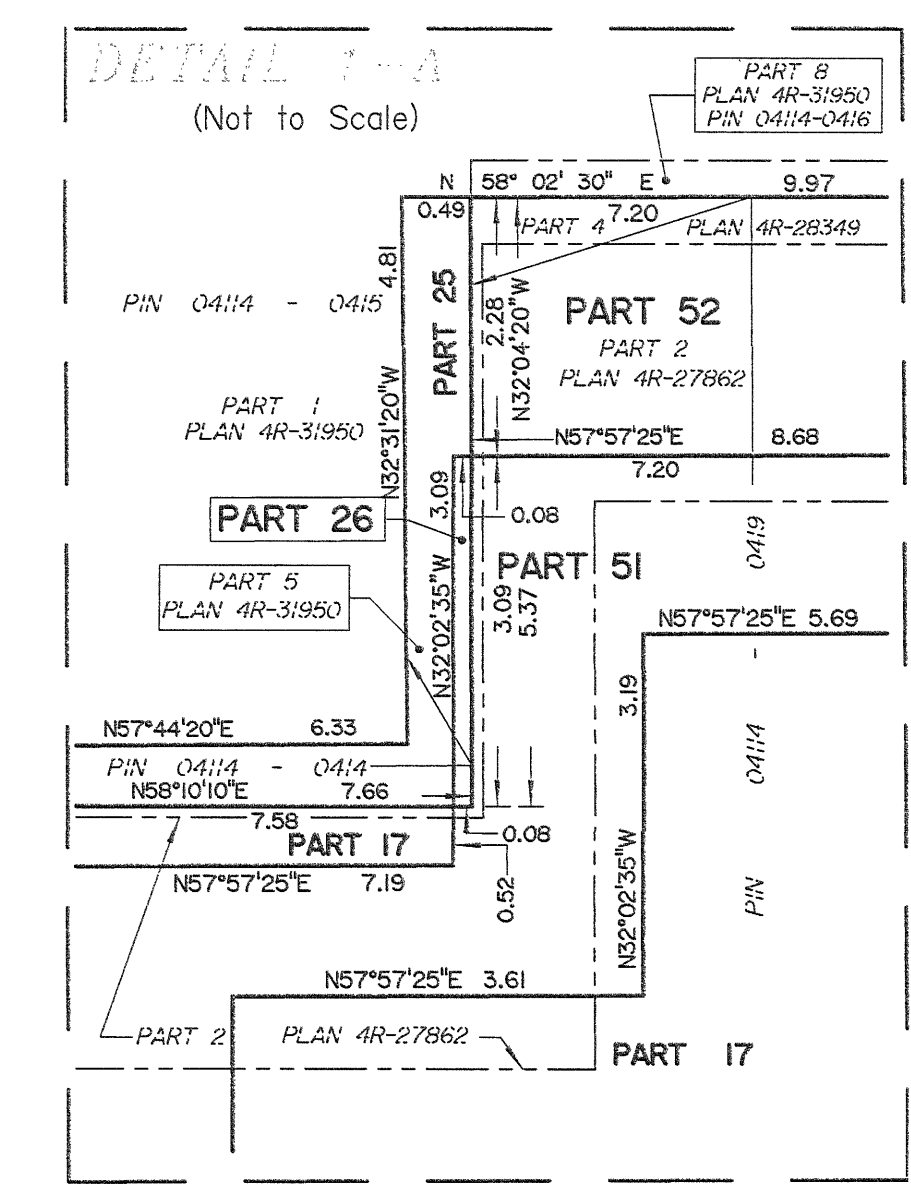
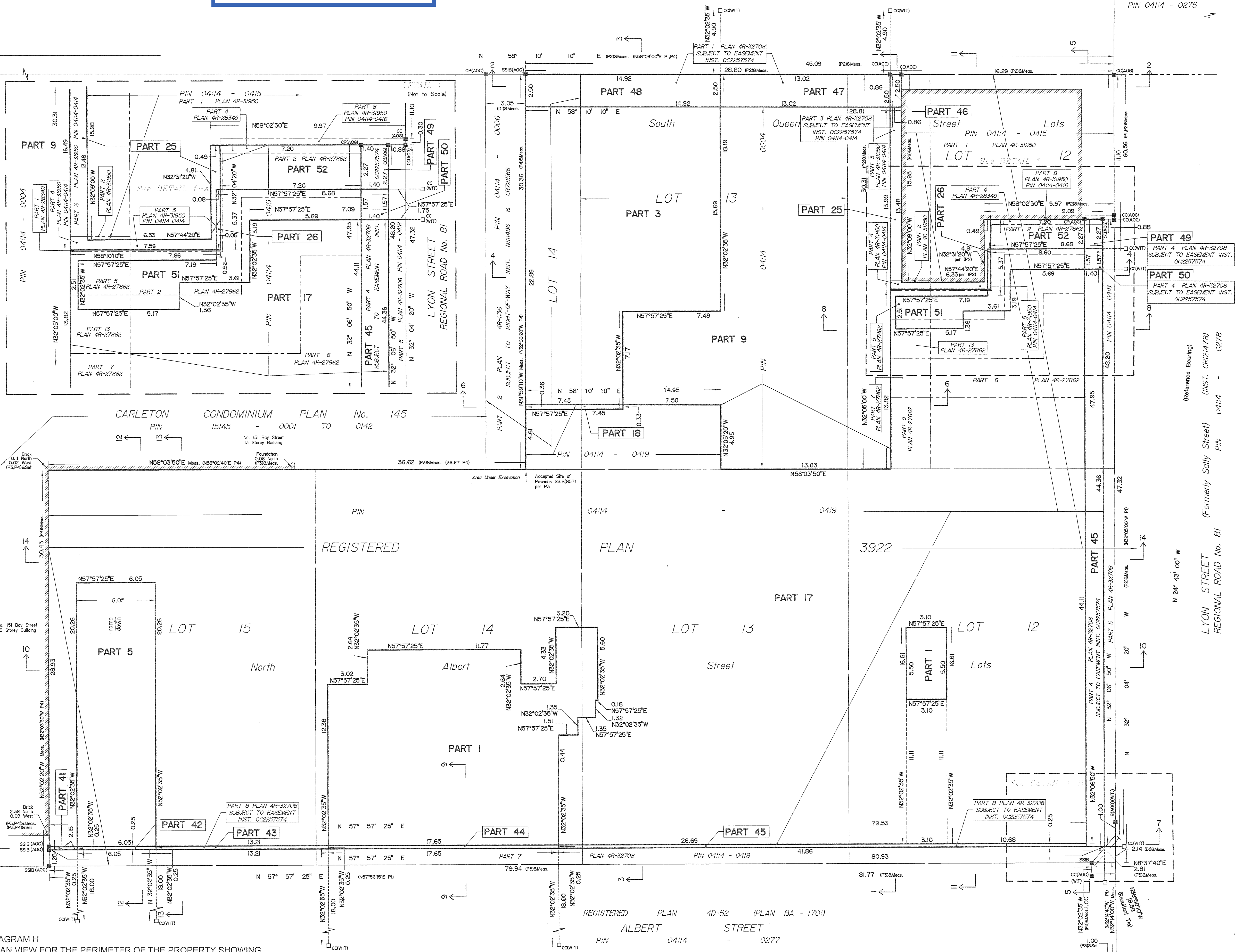
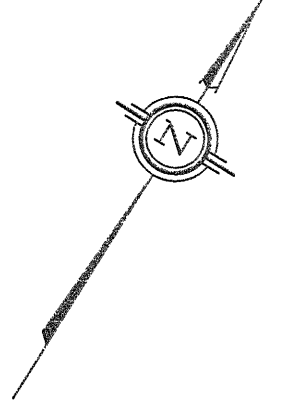
Committee of Adjustment  
Received | Reçu le  
  
2023-02-21  
  
City of Ottawa / Ville d'Ottawa  
Comité de dérogation

Surveyor's Certificate  
I CERTIFY THAT:  
1. This survey and plan comprising of sheets 1 to 10 are correct and in accordance with the Survey Act, the Surveyors Act and the Land Titles Act and the regulations made under them.  
2. The survey was completed on the 1st day of October, 2020.  
  
Date: October 7, 2020  
A.S. Broxham  
Andrew Broxham  
Ontario Land Surveyor

REQUIRE THIS PLAN TO BE DEPOSITED UNDER THE LAND TITLES ACT.  
DATE: October 7, 2020  
PLAN 4R-23169  
RECEIVED AND DEPOSITED DATE: OCT 9 2020  
A.S. Broxham  
ANDREW BROXHAM  
ONTARIO LAND SURVEYOR  
REPRESENTATIVE FOR THE LAND TITLES DIVISION OF OTTAWA-CARLETON NO. 4.

REGISTERED PLAN 40-52 (PLAN BA - 1700)  
QUEEN STREET REGIONAL ROAD NO. 46  
PIN 041/4 - 027/4

SCP 2011-0151



ELEVATION SHOWN		GEOGRAPHICAL LOCATION	
Part	Elevation	South Queen Street Lots	North Albert Street Lots
1	73.00	1	1
2	73.00	2	2
3	73.00	3	3
4	73.00	4	4
5	73.00	5	5
6	73.00	6	6
7	73.00	7	7
8	73.00	8	8
9	73.00	9	9
10	73.00	10	10
11	73.00	11	11
12	73.00	12	12
13	73.00	13	13
14	73.00	14	14
15	73.00	15	15
16	73.00	16	16
17	73.00	17	17
18	73.00	18	18
19	73.00	19	19
20	73.00	20	20
21	73.00	21	21
22	73.00	22	22
23	73.00	23	23
24	73.00	24	24
25	73.00	25	25
26	73.00	26	26
27	73.00	27	27
28	73.00	28	28
29	73.00	29	29
30	73.00	30	30
31	73.00	31	31
32	73.00	32	32
33	73.00	33	33
34	73.00	34	34
35	73.00	35	35
36	73.00	36	36
37	73.00	37	37
38	73.00	38	38
39	73.00	39	39
40	73.00	40	40
41	73.00	41	41
42	73.00	42	42
43	73.00	43	43
44	73.00	44	44
45	73.00	45	45
46	73.00	46	46
47	73.00	47	47
48	73.00	48	48
49	73.00	49	49
50	73.00	50	50
51	73.00	51	51
52	73.00	52	52
53	73.00	53	53
54	73.00	54	54
55	73.00	55	55
56	73.00	56	56

Surveyor's Certificate  
I CERTIFY THAT:  
1. The structures shown on this plan comprising sheets 1 to 10 are in existence.  
2. The dimensions shown on the plan have been verified by actual measurements.  
  
Date: October 7, 2020  
A.S. Broxham  
Andrew Broxham  
Ontario Land Surveyor

SCHEDULE			
PART	LOT	PLAN	PIN
1	Part of 12, 13, 14, 15 (North Albert Street)		Part of 04114-0419
2	Part of 12, 13, 14 (South Queen Street)		Part of 04114-0414
3	Part of 12, 13, 14 (South Queen Street)		Part of 04114-0004
4	Part of 12, 13, 14, 15 (North Albert Street)		Part of 04114-0419
5	Part of 12, 13, 14, 15 (North Albert Street)		Part of 04114-0419
6	Part of 12 (South Queen Street)		Part of 04114-0419
7	Part of 12 (South Queen Street)		Part of 04114-0419
8	Part of 12 (South Queen Street)		Part of 04114-0419
9	Part of 12, 13, 14 (South Queen Street)		Part of 04114-0414
10	Part of 12, 13, 14 (South Queen Street)		Part of 04114-0004
11	Part of 12, 13, 14 (South Queen Street)		Part of 04114-0419
12	Part of 12, 13, 14 (South Queen Street)		Part of 04114-0419
13	Part of 13 (North Albert Street)		Part of 04114-0419
14	Part of 12 (South Queen Street)		Part of 04114-0419
15	Part of 12 (South Queen Street)		Part of 04114-0419
16	Part of 12 (South Queen Street)		Part of 04114-0419
17	Part of 12, 13, 14, 15 (North Albert Street)		Part of 04114-0419
18	Part of 12, 13, 14 (South Queen Street)		Part of 04114-0419
19	Part of 12, 13, 14 (South Queen Street)		Part of 04114-0419
20	Part of 12, 13, 14 (South Queen Street)		Part of 04114-0419
21	Part of 12, 13, 14 (South Queen Street)		Part of 04114-0419
22	Part of 14 (North Albert Street)		Part of 04114-0419
23	Part of 12, 13 (North Albert Street)		Part of 04114-0004
24	Part of 12, 13 (North Albert Street)		Part of 04114-0419
25	Part of 12 (South Queen Street)		Part of 04114-0419
26	Part of 12 (South Queen Street)		Part of 04114-0419
27	Part of 12, 13 (South Queen Street)		Part of 04114-0419
28	Part of 12, 13 (South Queen Street)		Part of 04114-0419
29	Part of 12, 13 (South Queen Street)		Part of 04114-0419
30	Part of 12 (South Queen Street)		Part of 04114-0419
31	Part of 12, 13 (South Queen Street)		Part of 04114-0419
32	Part of 12, 13 (South Queen Street)		Part of 04114-0419
33	Part of 12 (South Queen Street)		Part of 04114-0419
34	Part of 12 (South Queen Street)		Part of 04114-0419
35	Part of 12 (South Queen Street)		Part of 04114-0419
36	Part of 12 (South Queen Street)		Part of 04114-0419
37	Part of 12 (South Queen Street)		Part of 04114-0419
38	Part of 12 (South Queen Street)		Part of 04114-0419
39	Part of 12 (South Queen Street)		Part of 04114-0419
40	Part of 12 (South Queen Street)		Part of 04114-0419
41	Part of 14 (North Albert Street)		Part of 04114-0419
42	Part of 15 (North Albert Street)		Part of 04114-0419
43	Part of 14, 15 (North Albert Street)		Part of 04114-0419
44	Part of 14 (North Albert Street)		Part of 04114-0419
45	Part of 12, 13, 14 (North Albert Street)		Part of 04114-0419
46	Part of 12 (South Queen Street)		Part of 04114-0419
47	Part of 12 (South Queen Street)		Part of 04114-0419
48	Part of 12 (South Queen Street)		Part of 04114-0419
49	Part of 12 (South Queen Street)		Part of 04114-0419
50	Part of 12 (South Queen Street)		Part of 04114-0419
51	Part of 12 (South Queen Street)		Part of 04114-0419
52	Part of 12 (South Queen Street)		Part of 04114-0419
53	Part of 13, 14, 15 (North Albert Street)		Part of 04114-0419
54	Part of 12 (South Queen Street)		Part of 04114-0419
55	Part of 12 (South Queen Street)		Part of 04114-0419
56	Part of 12 (South Queen Street)		Part of 04114-0419

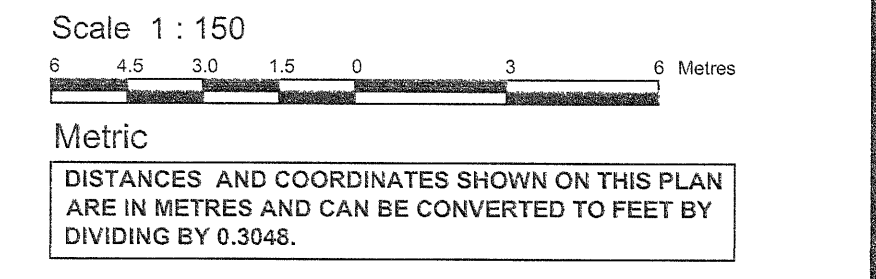
CERTIFICATE OF CORRECTION  
(Subsection 4(9) O. Reg. 43/96)  
Corrected under an Order of the Examiner of Surveys registered as No. AC23268/16  
Date: Mar 18 2021  
A.S. Broxham  
Representative for Land Registrar

Notes & Legend  
 - Denotes Survey Monument Planted  
 - Survey Monument Found  
 - Standard Iron Bar  
 - Short Standard Iron Bar  
 - Concrete Pin  
 - Cut Cross  
 - Witness  
 - Annis O'Sullivan, Vollebek Ltd. Meas.  
 - Measured  
 - (P1) Plan 4D-562 (Plan BA-1701)  
 - (P2) Plan 4R-31650  
 - (P3) (AOG) Plan July 16, 2019  
 - (P4) Caplan Condominium Plan No. 145  
 - (P5) Plan 4R-32708  
 - (P6) Int. CR627355  
 - V Vertical Plane  
 - H Horizontal Plane  
 - Elev. Elevation  
 - Sp. Spacing  
 - See Section 1 for Vertical Limits  
 - See Diagram A for Horizontal Limits  
 - Downwards Without Limit  
 - Upwards Without Limit

Parts 6, 7, 34, 35, 36, 37, 38, 39, 54 Subject to Instrument OCT615577  
 Parts 40, 41, 42, 43, 44, 45, 46, 47, 48, 49, 50, 56 Subject to Instrument OCT255754  
 Parts 3, 8, 9, 10, 12, 19, 24, 28, 32, 47, 48 comprise all of PIN 04114-0004.  
 Parts 2, 11, 25, 26, 33, 46, 55 comprise all of PIN 04114-0414.  
 Parts 1, 4, 5, 6, 7, 13, 14, 15, 16, 17, 18, 20, 21, 22, 23, 26, 27, 30, 31, 34, 35, 36, 37, 38, 39, 40, 41, 42, 43, 44, 45, 49, 50, 51, 52, 53, 54, 56 comprise all of PIN 04114-0419.

STRATA PLAN OF SURVEY OF  
 PART OF LOTS 12 AND 14  
 AND ALL OF LOT 13  
 (South Queen Street)  
 (NUMBERING WESTWARD)  
 AND PART OF 12, 13, 14  
 AND 15  
 (North Albert Street)  
 (NUMBERING WESTWARD)  
 REGISTERED PLAN 3922  
 CITY OF OTTAWA  
 Surveyed by Annis, O'Sullivan, Vollebek Ltd.

Elevations shown are geodetic and are referred to the CGVD28 geodetic datum. Elevations are referred to SCP 2011-0066 having an Elev. (Brass cap in concrete) 473.31 metres.  
 Distances shown on this plan are ground distances and can be converted to 95% distances by multiplying by the combined scale factor of 0.99994.  
 Bearings are MTM grid, derived from Specified Control Points (SCP) 2011-0066 and 2011-0151 having a resultant bearing of N62°43'00"W and are referred to the Central Meridian of MTM Zone 9 (76°30' West Longitude) NAD-83 (original).  
 Coordinates are referred to the Central Meridian of MTM Zone 9 NAD-83 (original).  
 - SCP 2011-0066 Northing: 5031288.88 Easting: 307062.05  
 - SCP 2011-0151 Northing: 5031384.08 Easting: 306990.80  
 Coordinate values are to urban accuracy in accordance with O. Reg. 216/10.  
 Caution: Coordinates cannot, in themselves, be used to re-establish corners or boundaries shown on this plan.  
 Horizontal limits of Parts shown hereon have a bearing of N 57°57'25"E or N 52°02'35"W unless otherwise noted.  
 Survey monuments set or witnessed where site conditions permitted.



ANNIS, O'SULLIVAN, VOLLEBEK LTD.  
 14 Concourse Gate, Suite 500  
 Nepean, Ont. K2E 7S6  
 Phone: (613) 727-6850 / Fax: (613) 727-1079  
 Email: info@anniso.com  
 Ontario Land Surveyors (No. 8828-9) Queen's Univ. Lic. 29393-9 Reg. P. 16

DIAGRAM H  
 PLAN VIEW FOR THE PERIMETER OF THE PROPERTY SHOWING THE CONFIGURATION OF PARTS AT GRADE (Elevation 73.00)

SCP 2011-0066  
 BRASS CAP IN CONCRETE