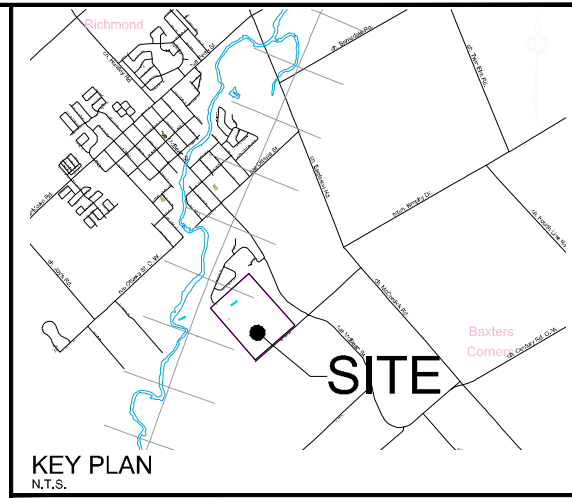


M:\2020\120152\CAD\Planning\Figures\120152-SEV.dwg, Oct 27, 2022 - 4:28pm, wslloss

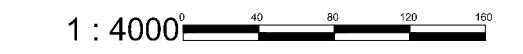


CONSENT APPLICATION

6305 DOBSON LANE

SOUTH HALF LOT 23,
CONCESSION 2
GEOGRAPHIC TOWNSHIP OF GOULBOURN
CITY OF OTTAWA
Committee of Adjustment
Received | Reçu le

2022-11-09
City of Ottawa | Ville d'Ottawa
Comité de dérogation

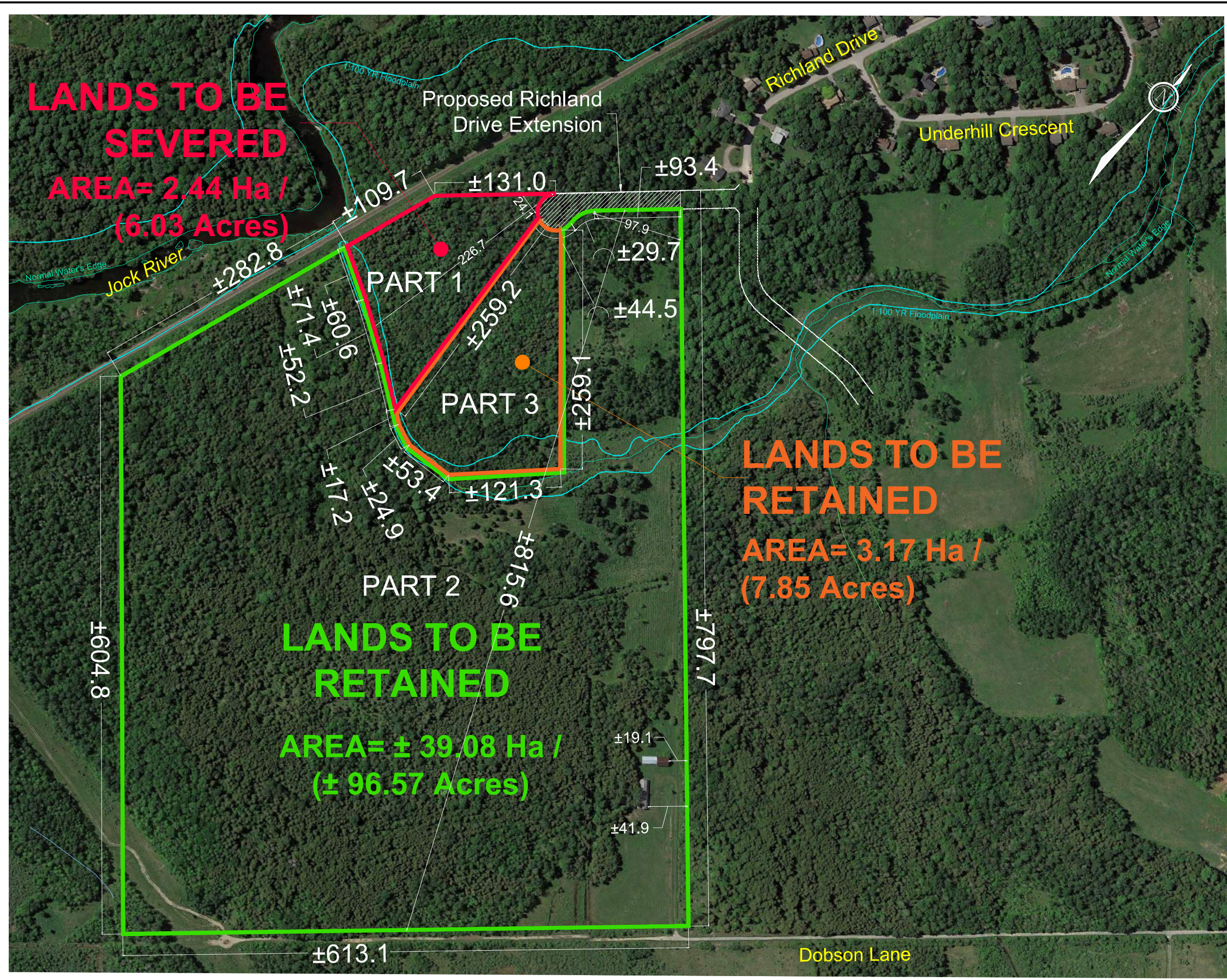


No.	REVISION	DATE	BY
2.	RE-ISSUED FOR CONSENT APPLICATION	NOV 01/22	AT
1.	ISSUED FOR CONSENT APPLICATION	MAY 06/22	TW

NOVATECH
Engineers, Planners & Landscape Architects
Suite 200, 240 Michael Cowpland Drive
Ottawa, Ontario, Canada K2M 1P6
Telephone: (613) 254-9643
Facsimile: (613) 254-5857
Website: www.novatech-eng.com

ISSUED
NOVEMBER, 2022
PROJECT No.
120152
DRAWING No.
120152-SEV

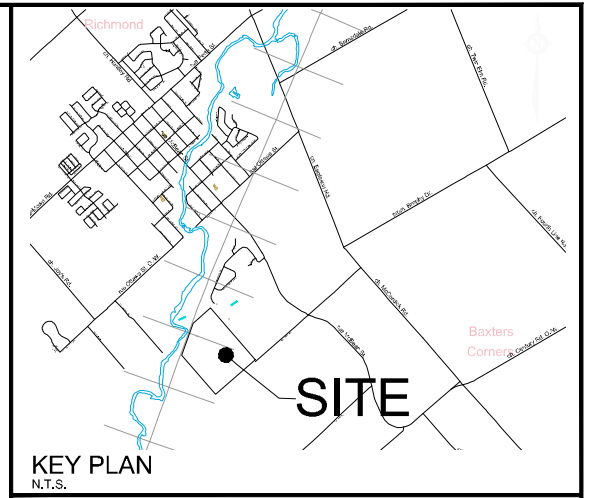
M:\2020\120152\CAD\Planning\Figures\120152-SEV.dwg, 6335-1, Oct 27, 2022 - 4:28pm, wslloss



LANDS TO BE SEVERED
AREA= 2.44 Ha / (6.03 Acres)

LANDS TO BE RETAINED
AREA= 3.17 Ha / (7.85 Acres)

LANDS TO BE RETAINED
AREA= ± 39.08 Ha / (± 96.57 Acres)

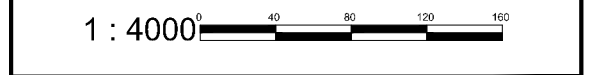


CONSENT APPLICATION #1

6335 DOBSON LANE

SOUTH HALF LOT 22,
 CONCESSION 2
 GEOGRAPHIC TOWNSHIP OF GOULBOURN
 CITY OF OTTAWA

Committee of Adjustment Received | Reçu le
 2022-11-09
 City of Ottawa | Ville d'Ottawa
 Comité de dérogation



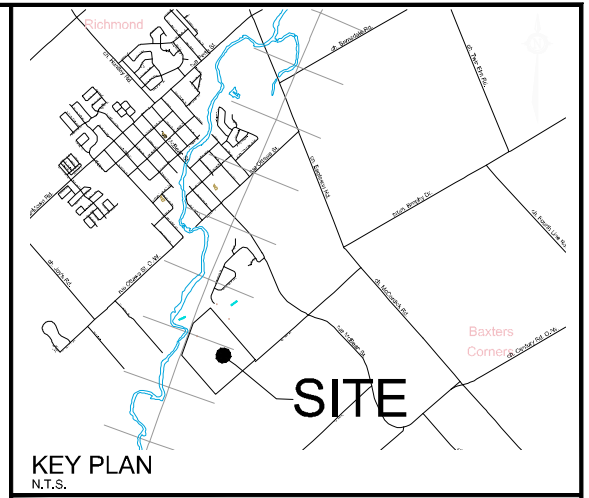
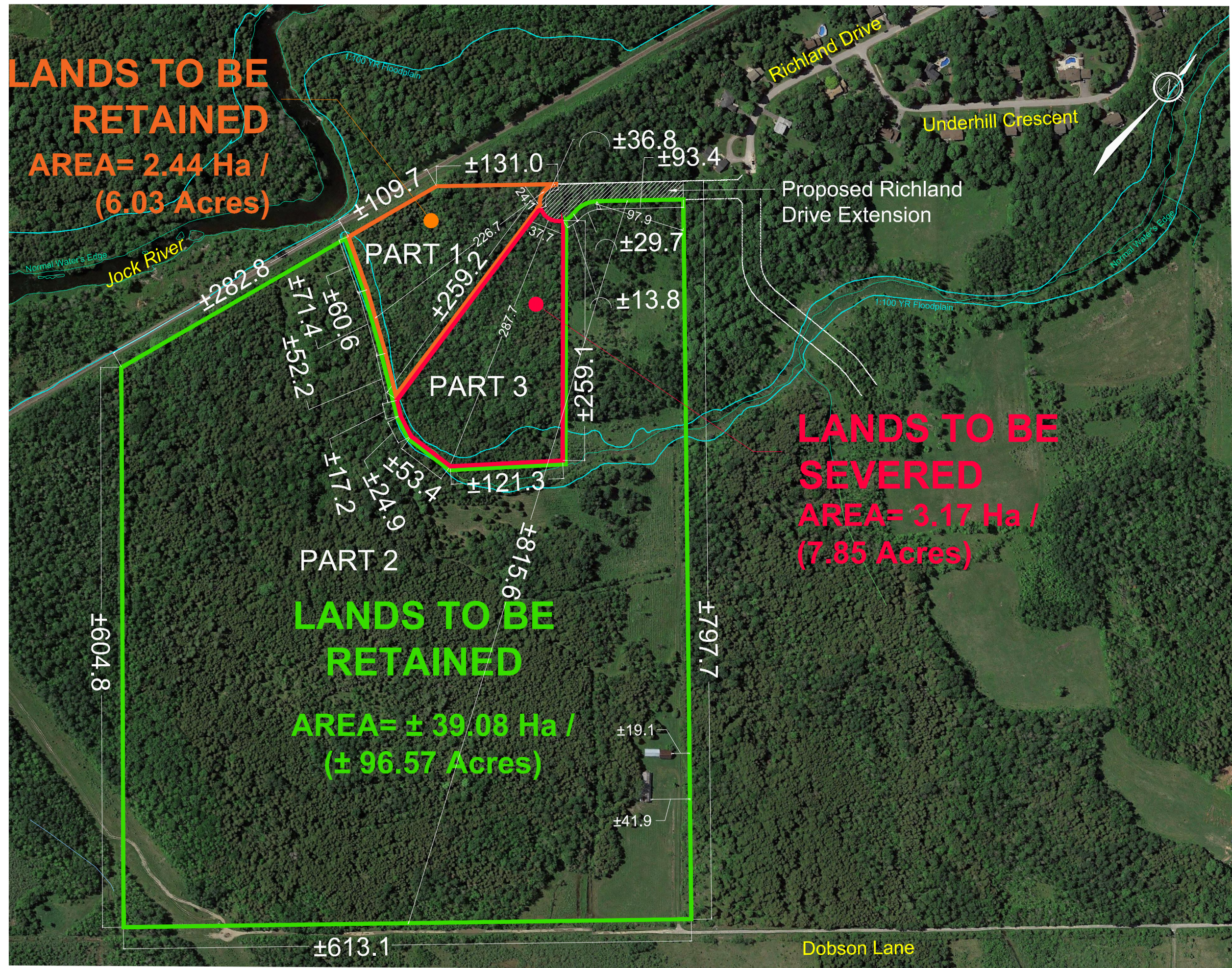
No.	REVISION	DATE	BY
2.	RE-ISSUED FOR CONSENT APPLICATION	NOV 01/22	AT
1.	ISSUED FOR CONSENT APPLICATION	MAY 06/22	TW

NOVATECH
 Engineers, Planners & Landscape Architects
 Suite 200, 240 Michael Cowpland Drive
 Ottawa, Ontario, Canada K2M 1P6
 Telephone: (613) 254-9643
 Facsimile: (613) 254-5857
 Website: www.novatech-eng.com

ISSUED
 NOVEMBER, 2022

PROJECT No.
 120152

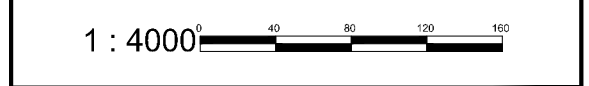
DRAWING No.
 120152-SEV



CONSENT APPLICATION #2

6335 DOBSON LANE

SOUTH HALF LOT 22,
CONCESSION 2
GEOGRAPHIC TOWNSHIP OF GOULBOURN
CITY OF OTTAWA
Committee of Adjustment
Received | Reçu le
2022-11-09
City of Ottawa | Ville d'Ottawa
Comité de dérogation



No.	REVISION	DATE	BY
2.	RE-ISSUED FOR CONSENT APPLICATION	NOV 01/22	AT
1.	ISSUED FOR CONSENT APPLICATION	MAY 06/22	TW

NOVATECH
Engineers, Planners & Landscape Architects
Suite 200, 240 Michael Cowpland Drive
Ottawa, Ontario, Canada K2M 1P6
Telephone: (613) 254-9643
Facsimile: (613) 254-5857
Website: www.novatech-eng.com

ISSUED
NOVEMBER, 2022

PROJECT No.
120152

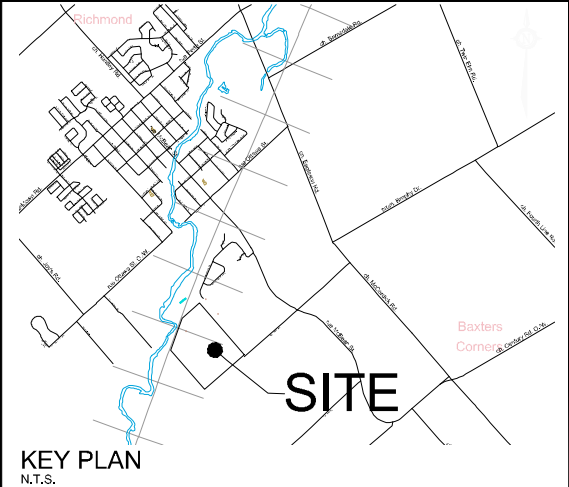
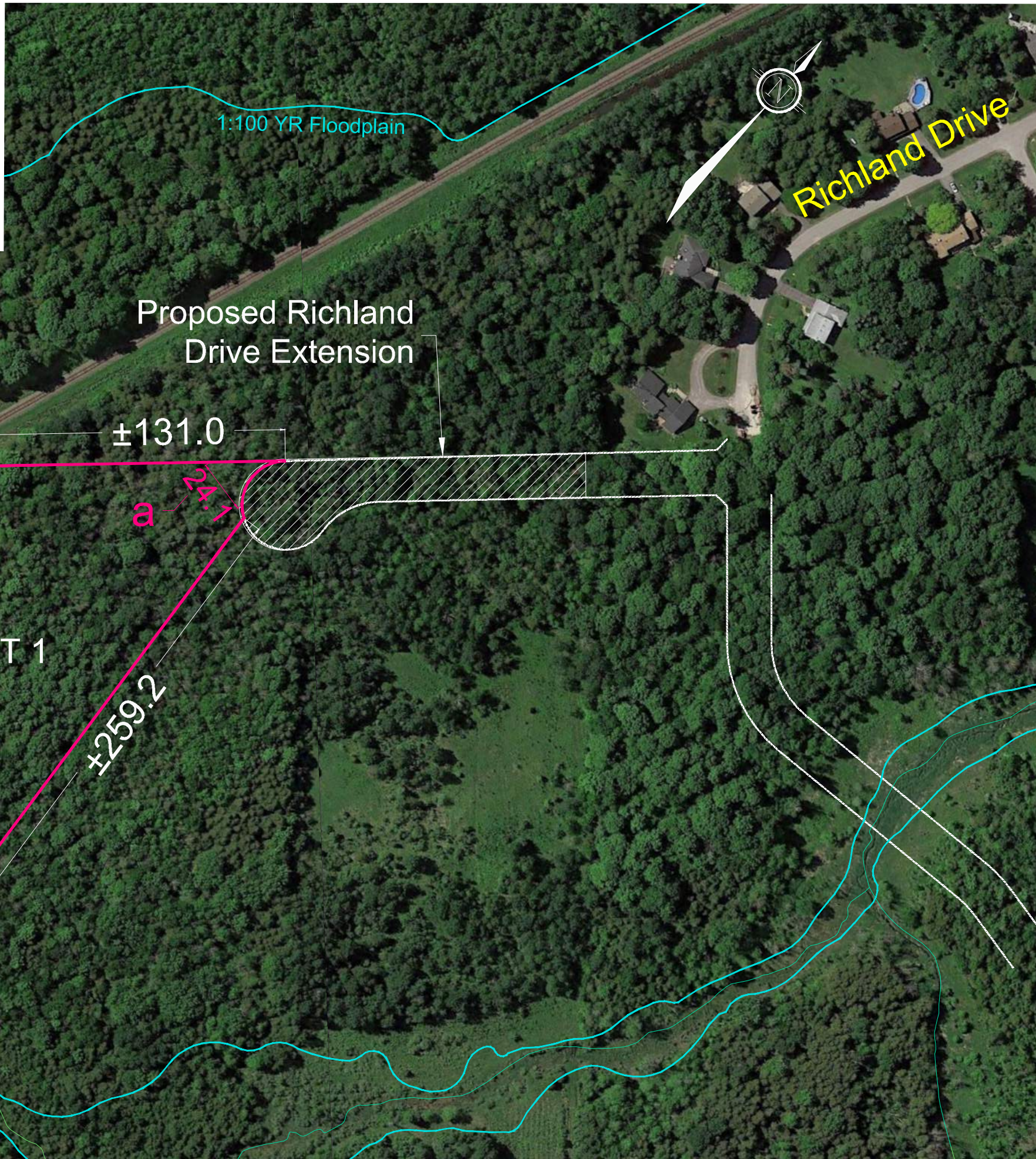
DRAWING No.
120152-SEV

M:\2020\120152\CAD\Planning\Figures\120152-SEV.dwg, 6335-2, Nov 01, 2022 - 10:20am, wslloss

Minor Variance Application:

Part 1:

- a. To permit a reduced lot width of 24.1 meters; whereas the By-law requires a minimum lot width of 50 meters (Section 227(2), Table 227(a)).



MINOR VARIANCE APPLICATION #1

6335 DOBSON LANE

SOUTH HALF LOT 22,
CONCESSION 2
GEOGRAPHIC TOWNSHIP OF GOULBOURN

CITY OF OTTAWA
Committee of Adjustment
Received | Reçu le

2022-11-09
City of Ottawa | Ville d'Ottawa
Comité de dérogation



No.	REVISION	DATE	BY
1.	ISSUED FOR MINOR VARIANCE APPLICATION	SEPT 16/22	AT

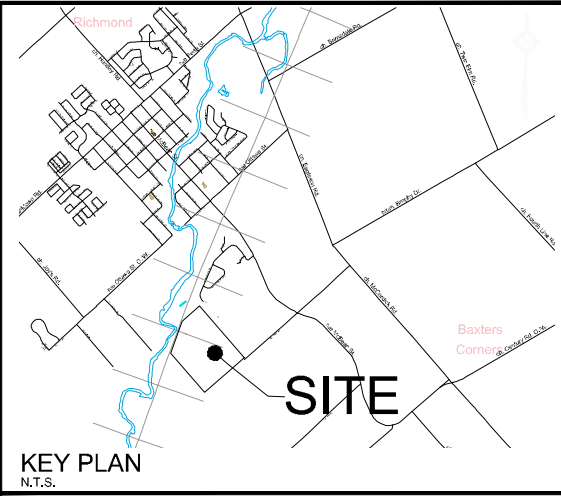
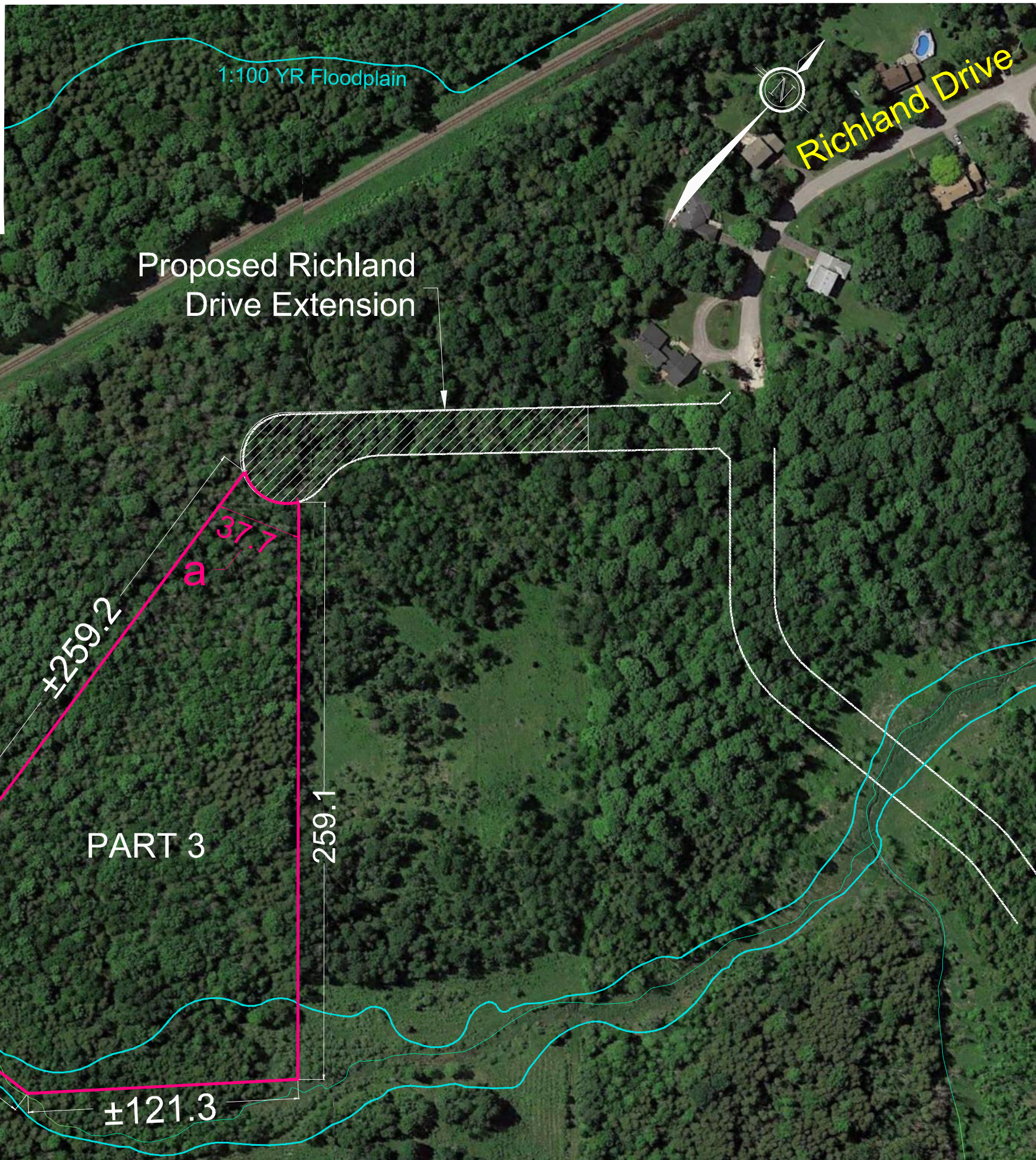
NOVATECH
Engineers, Planners & Landscape Architects
Suite 200, 240 Michael Cowpland Drive
Ottawa, Ontario, Canada K2M 1P6
Telephone: (613) 254-9643
Facsimile: (613) 254-5857
Website: www.novatech-eng.com

ISSUED
SEPTEMBER, 2022
PROJECT No. 120152
DRAWING No. 120152-MV

Minor Variance Application:

Part 3:

- b. To permit a reduced lot width of 37.7 meters; whereas the By-law requires a minimum lot width of 50 meters (Section 227(2), Table 227(a)).

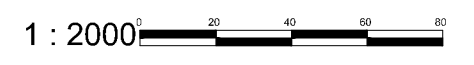


MINOR VARIANCE APPLICATION #2

6335 DOBSON LANE

SOUTH HALF LOT 22,
CONCESSION 2
GEOGRAPHIC TOWNSHIP OF GOULBOURN
CITY OF OTTAWA
Committee of Adjustment
Received | Reçu le

2022-11-09
City of Ottawa | Ville d'Ottawa
Comité de dérogation



No.	REVISION	DATE	BY
1.	ISSUED FOR MINOR VARIANCE APPLICATION	SEPT 16/22	AT

NOVATECH
Engineers, Planners & Landscape Architects
Suite 200, 240 Michael Cowpland Drive
Ottawa, Ontario, Canada K2M 1P6
Telephone: (613) 254-9643
Facsimile: (613) 254-5857
Website: www.novatech-eng.com

ISSUED
SEPTEMBER, 2022
PROJECT No.
120152
DRAWING No.
120152-MV

M:\2020\120152\CAD\Planning\Figures\120152-MV.dwg, 6335-2, Sep 16, 2022 - 12:09pm, wslloss