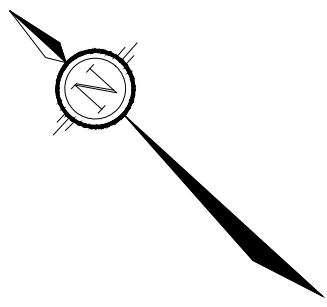
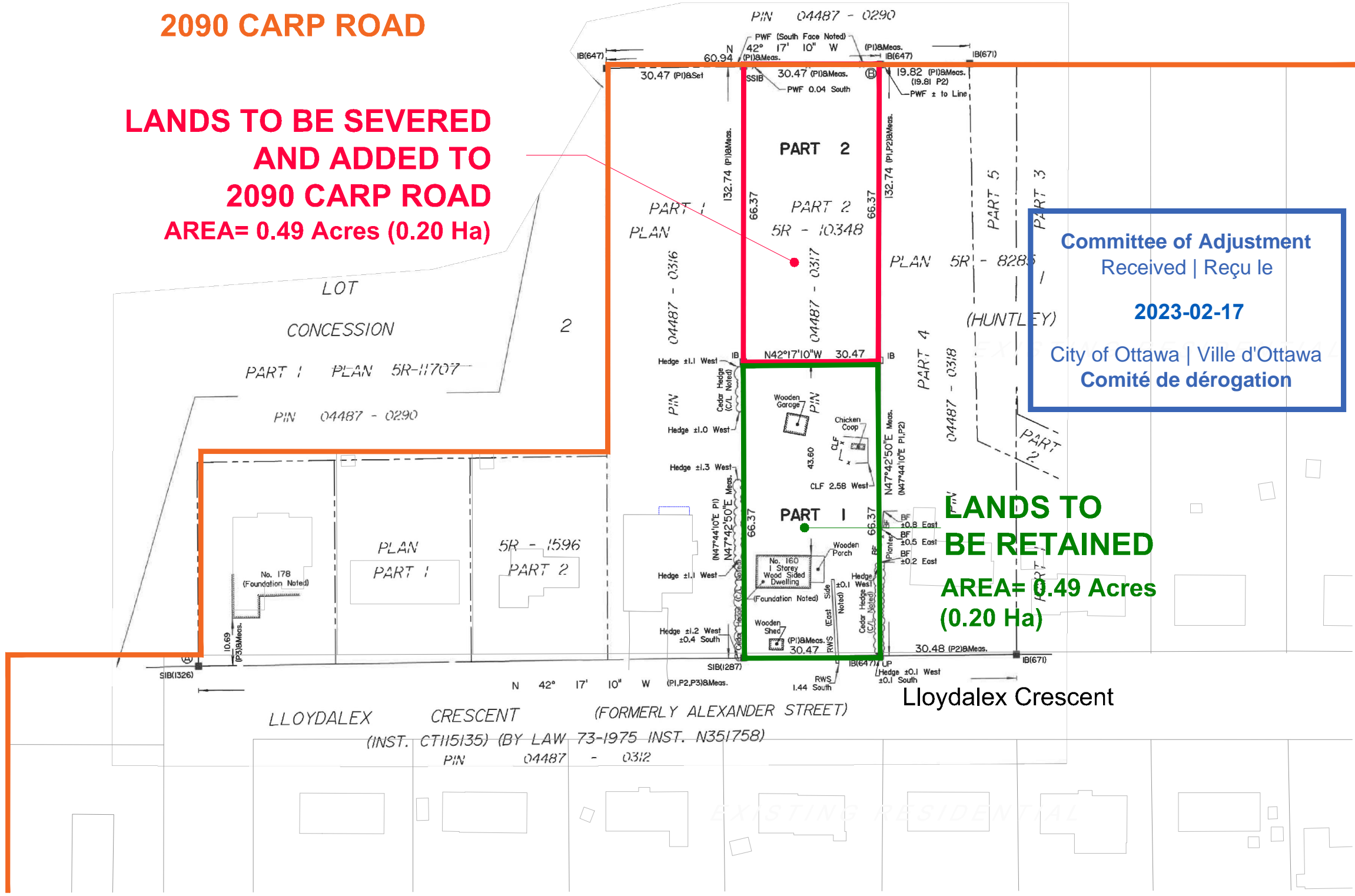


M:\1997\9711\CAD\Planning\Figures\9711-SEV(adv).dwg\_SEV, Nov 24, 2022 - 3:30pm, wslloss



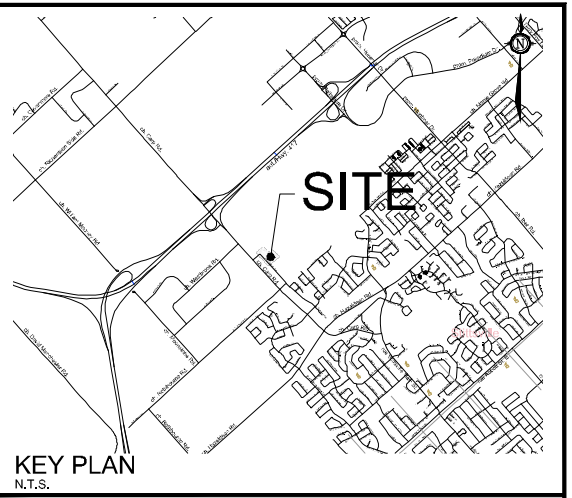
**2090 CARP ROAD**

**LANDS TO BE SEVERED  
AND ADDED TO  
2090 CARP ROAD  
AREA= 0.49 Acres (0.20 Ha)**



**Committee of Adjustment  
Received | Reçu le  
2023-02-17  
City of Ottawa | Ville d'Ottawa  
Comité de dérogation**

**LANDS TO  
BE RETAINED  
AREA= 0.49 Acres  
(0.20 Ha)**



# LOT ADDITION APPLICATION

160 LLOYDALEX CRESCENT

PART OF LOT 1  
CONCESSION 2  
GEOGRAPHIC TOWNSHIP OF HUNTLEY  
CITY OF OTTAWA



No.	REVISION	DATE	BY
1.	ISSUED FOR SEVERANCE APPLICATION	NOV 09/22	AT

**NOVATECH**  
 Engineers, Planners & Landscape Architects  
 Suite 200, 240 Michael Cowpland Drive  
 Ottawa, Ontario, Canada K2M 1P6  
 Telephone (613) 254-9643  
 Facsimile (613) 254-5857  
 Website www.novatech-eng.com

ISSUED  
 NOVEMBER 2022  
 PROJECT No.  
**97111**  
 DRAWING No.  
**97111-SEV**