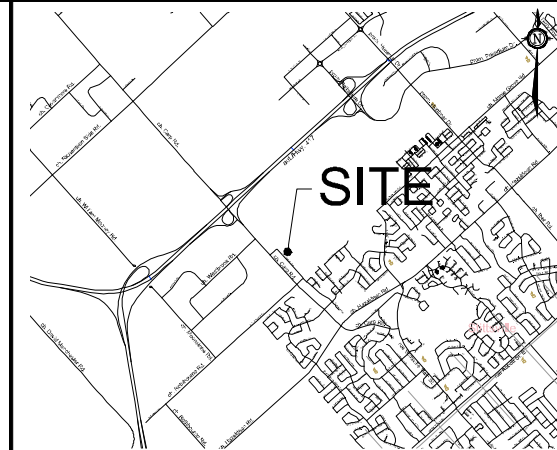
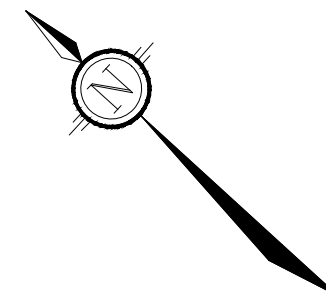


M:\1997\9711\CAD\Planning\Figures\9711-SEV.dwg\_SEV, Nov 25, 2022 - 11:13am, wslbss

2090 CARP ROAD

LANDS TO BE SEVERED  
AND ADDED TO  
2090 CARP ROAD  
AREA= 0.49 Acres (0.20 Ha)



KEY PLAN  
N.T.S.

# LOT ADDITION APPLICATION

164 LLOYDALEX CRESCENT

Committee of Adjustment  
Received | Reçu le  
**2023-02-17**  
City of Ottawa | Ville d'Ottawa  
Comité de dérogation

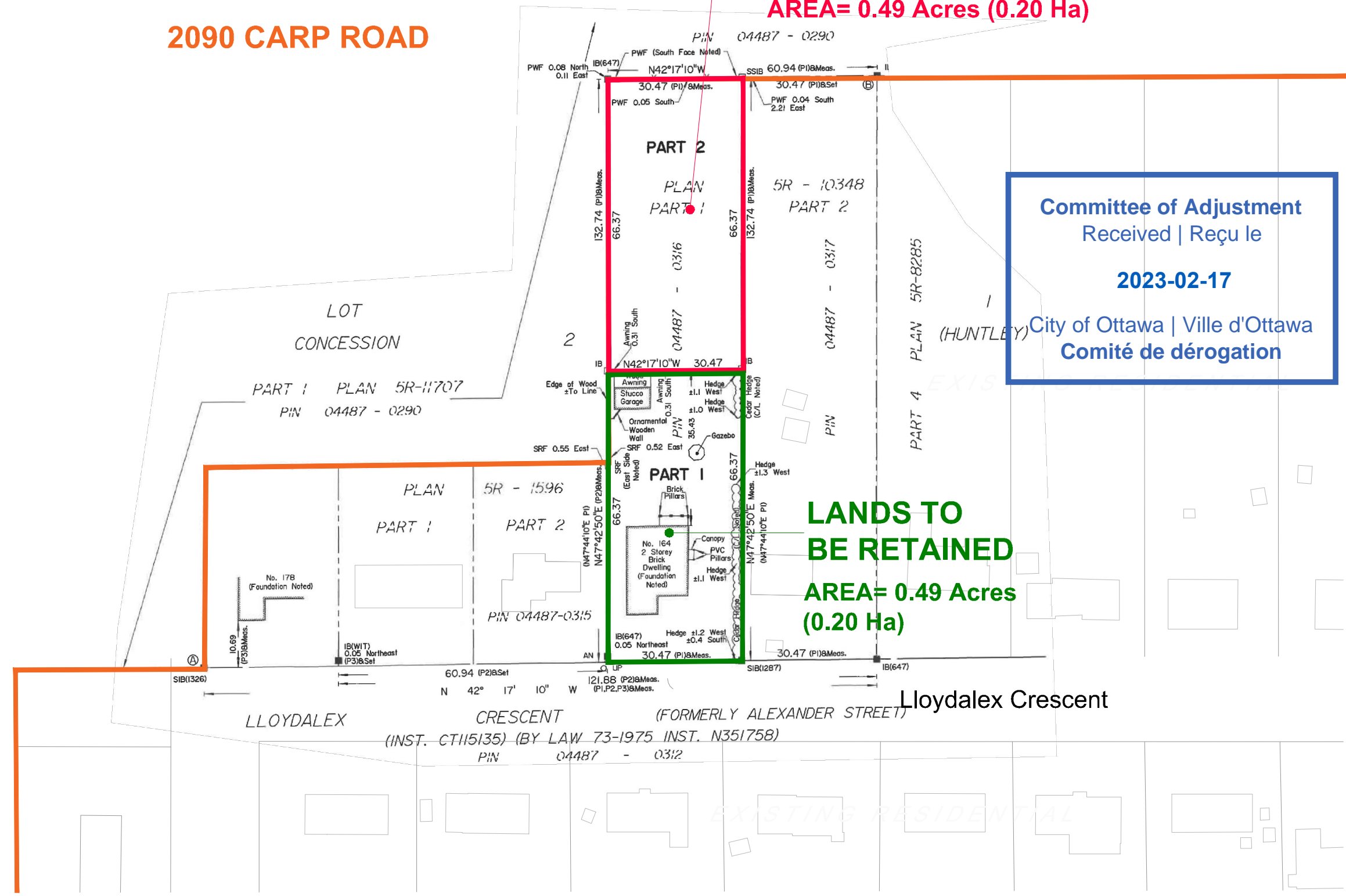
PART OF LOT 1  
CONCESSION 2  
GEOGRAPHIC TOWNSHIP OF HUNTLEY  
CITY OF OTTAWA

1 : 1000

No.	REVISION	DATE	BY
1.	ISSUED FOR SEVERANCE APPLICATION	NOV 25/22	AT

**NOVATECH**  
Engineers, Planners & Landscape Architects  
Suite 200, 240 Michael Cowpland Drive  
Ottawa, Ontario, Canada K2M 1P5  
Telephone (613) 254-9643  
Facsimile (613) 254-5857  
Website www.novatech-eng.com

ISSUED  
NOVEMBER 2022  
PROJECT No.  
**97111**  
DRAWING No.  
**97111-SEV**



LANDS TO  
BE RETAINED  
AREA= 0.49 Acres  
(0.20 Ha)

Lloydalex Crescent