

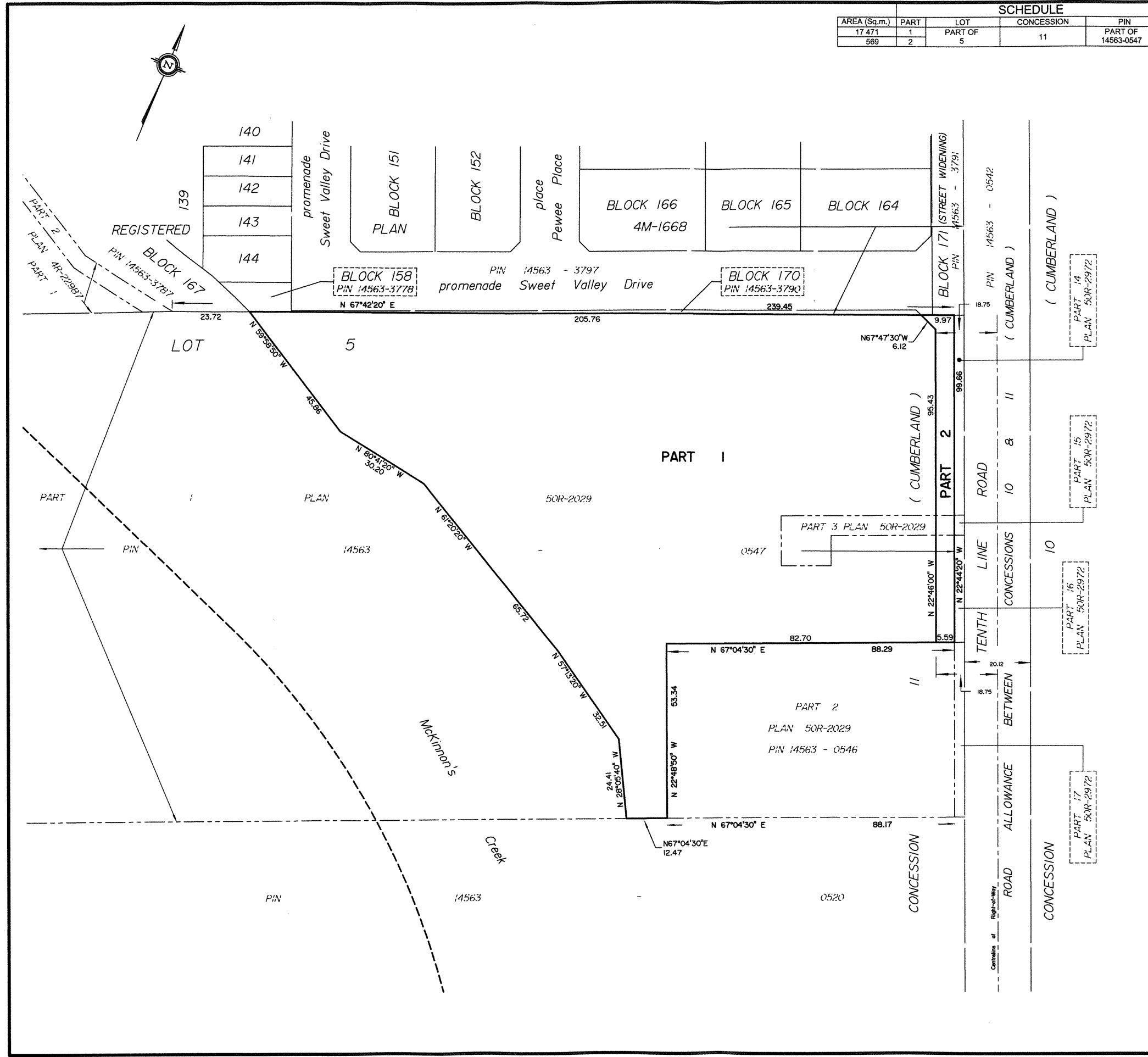
SCHEDULE			
AREA (Sq.m.)	PART	LOT	CONCESSION
17 471	1	PART OF	11
569	2	5	

I REQUIRE THIS PLAN TO BE DEPOSITED UNDER THE LAND TITLES ACT.
DATE: _____

T. HARTWICK
ONTARIO LAND SURVEYOR

PLAN 4R-
RECEIVED AND DEPOSITED
DATE: _____

REPRESENTATIVE FOR
LAND REGISTRAR FOR THE
LAND TITLES DIVISION OF
OTTAWA-CARLETON NO. 4.



PLAN OF SURVEY OF
**PART OF LOT 5
CONCESSION 11**
Geographic Township of Cumberland
CITY OF OTTAWA
Surveyed by Annis, O'Sullivan, Vollebakk Ltd.
Scale 1 : 750
Metric
DISTANCES AND COORDINATES SHOWN ON THIS PLAN
ARE IN METRES AND CAN BE CONVERTED TO FEET BY
DIVIDING BY 0.3048.

Surveyor's Certificate
I CERTIFY THAT:
1. This survey and plan are correct and in accordance with the Surveys Act, the Surveyors Act and the Land Titles Act and the regulations made under them.
2. The survey was completed on the ___ day of _____, 2022.

Date _____ T. Hartwick
Ontario Land Surveyor

Notes & Legend

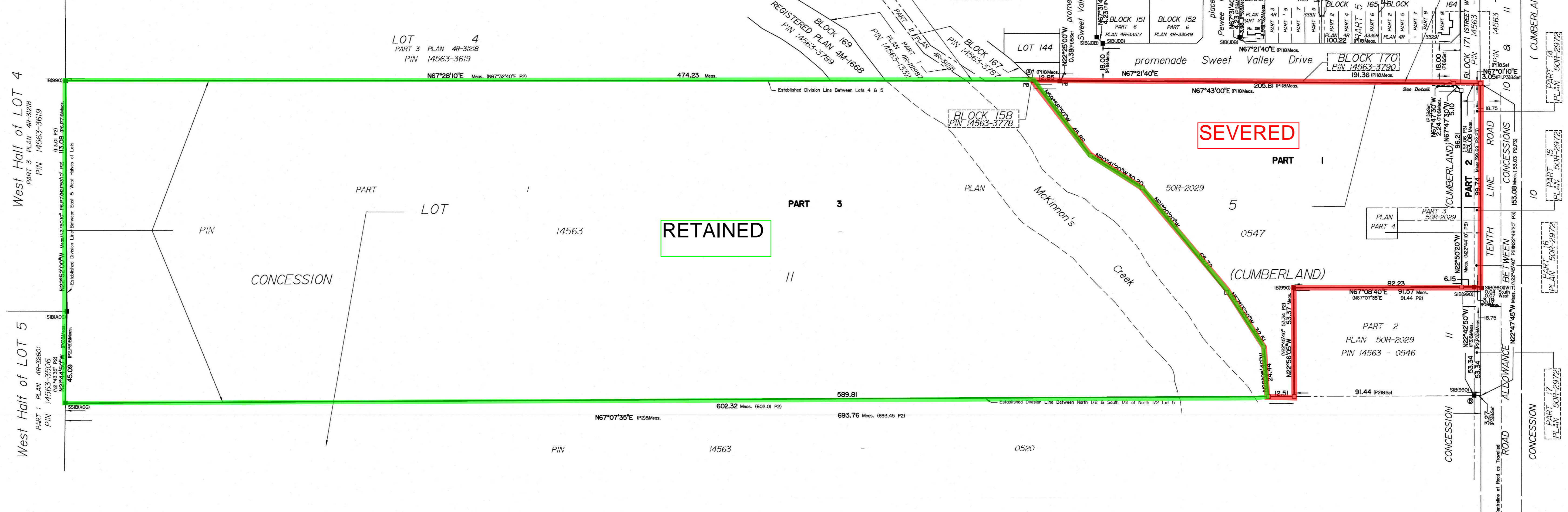
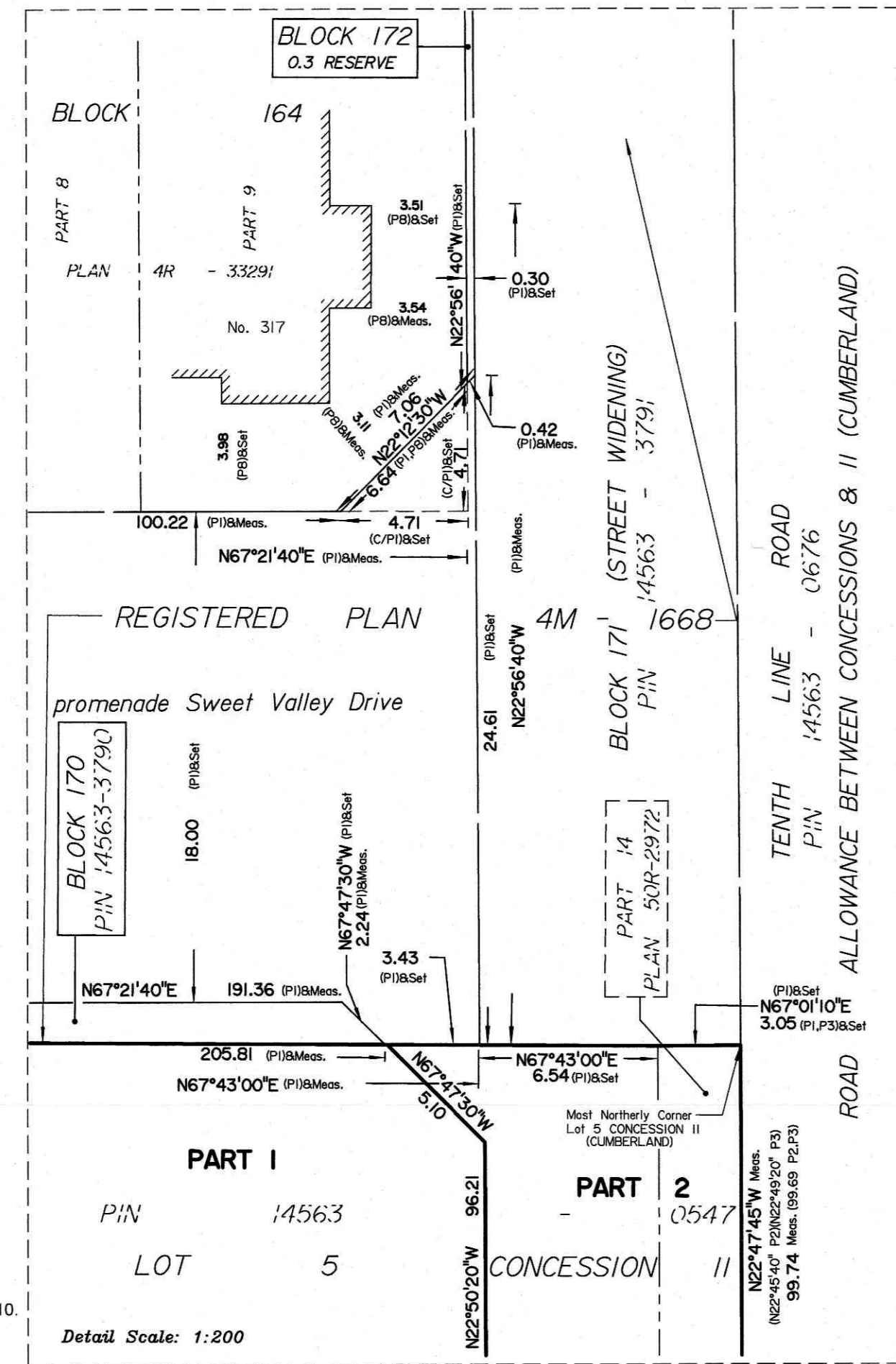
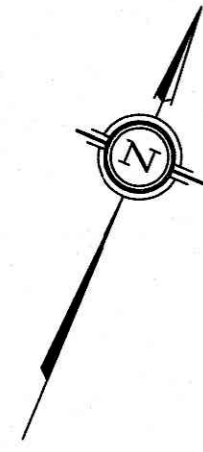
□	Denotes	Survey Monument Planted
■		Survey Monument Found
SIB		Standard Iron Bar
SSIB		Short Standard Iron Bar
IB		Iron Bar
(WIT)		Witness
(AOG)		Annis, O'Sullivan, Vollebakk Ltd.
Meas.		Measured
(P1)		Plan

Distances shown on this plan are ground distances and can be converted to grid distances by multiplying by the combined scale factor of 0.99999x.
Bearings are grid, derived from Can-Net 2016 Real Time Network GPS observations on reference points A and B, shown hereon, having a bearing of Nxx°xx'xx"W and are referenced to Specified Control Points 01919680184 and 019198434761, MTM Zone 9 (76°30' West Longitude) NAD-83 (original).
Coordinates are derived from Can-Net 2016 Real Time Network GPS observations referenced to Specified Control Points 01919680184 and 019198434761, MTM Zone 9 (76°30' West Longitude) NAD-83 (original).
Coordinate values are to urban accuracy in accordance with O. Reg. 216/10.

. 01919680184	Northing	5040610.16	Easting	384736.56
. 019198434761	Northing	5036178.12	Easting	372436.11
. Point A	Northing		Easting	
. Point B	Northing		Easting	

Caution: Coordinates cannot, in themselves, be used to re-establish corners or boundaries shown on this plan.

Y:\GIS\Projects\Map\Map\2119-22_Claridge_P1.L1.L1.C11.CUR.DWG



Distances shown on this plan are ground distances and can be converted to grid distances by multiplying by the combined scale factor of 0.999965.

Bearings are grid, derived from Can-Net 2016 Real Time Network GPS observations on reference points A and B, shown hereon, having a bearing of N77°04'38"W and are referenced to Specified Control Points 01919680184 and 019198434761, MTM Zone 9 (76°30' West Longitude) NAD-83 (original).

For bearing comparisons, a rotation of 0°42'10" counter-clockwise was applied to bearings on plan P2.

Coordinates are derived from Can-Net 2016 Real Time Network GPS observations referenced to Specified Control Points 01919680184 and 019198434761, MTM Zone 9 (76°30' West Longitude) NAD-83 (original).

Coordinate values are to urban accuracy in accordance with O. Reg. 216/10.

Point A	Northing	5040610.16	Easting	384736.56
Point B	Northing	5036178.12	Easting	372436.11
Point A	Northing	5033791.13	Easting	384701.41
Point B	Northing	5033731.75	Easting	384960.18

Caution: Coordinates cannot, in themselves, be used to re-establish corners or boundaries shown on this plan.

I REQUIRE THIS PLAN TO BE DEPOSITED UNDER THE LAND TITLES ACT.
DATE: _____

T. HARTWICK
ONTARIO LAND SURVEYOR

REPRESENTATIVE FOR LAND REGISTRAR FOR THE LAND TITLES DIVISION OF OTTAWA-CARLETON NO. 4.

SCHEDULE

AREA (Sq.m)	PART	LOT	CONCESSION	PIN
17411	1			
942	2	PART OF 5	11	ALL OF 14563-0547
84823	3			

PLAN OF SURVEY OF PART OF LOT 5 CONCESSION 11
Geographic Township of Cumberland
CITY OF OTTAWA
Surveyed by Annis, O'Sullivan, Vollebek Ltd.
Scale 1 : 1000

Metric
DISTANCES AND COORDINATES SHOWN ON THIS PLAN ARE IN METRES AND CAN BE CONVERTED TO FEET BY DIVIDING BY 0.3048.

Surveyor's Certificate
I CERTIFY THAT:
1. This survey and plan are correct and in accordance with the Surveys Act, the Surveyors Act and the Land Titles Act and the regulations made under them.
2. The survey was completed on the day of _____, 2023.

Date: _____
T. Hartwick
Ontario Land Surveyor

This plan of survey relates to AOLS Plan Submission Form Number V-44965

Notes & Legend

□	Denotes	Survey Monument Planted
■	"	Survey Monument Found
SIB	"	Standard Iron Bar
SSIB	"	Short Standard Iron Bar
PS	"	Plastic Bar
IB	"	Iron Bar
(WIT)	"	Witness
(AOG)	"	Annis, O'Sullivan, Vollebek Ltd.
Meas.	"	Measured
C/	"	Calculated per
(P1)	"	Registered Plan 4M-1668
(P2)	"	Plan 50R-2029
(P3)	"	Plan 50R-2072
(P4)	"	Plan 4R-33517
(P5)	"	Plan 4R-33311
(P6)	"	Plan 4R-32601
(P7)	"	Plan 4R-31218
(P8)	"	Plan 4R-33291

ANNIS, O'SULLIVAN, VOLLEBEK LTD.
14 Concourse Gate, Suite 500
Nepean, Ont. K2E 7S6
Phone: (613) 727-0850 / Fax: (613) 727-1079
Email: Nepean@anniso.com

APPROVED UNDER SECTION 51 OF THE PLANNING ACT BY THE CITY OF OTTAWA.
 THIS _____ DAY OF _____, 20____

DON HERWEYER, M.C.P., R.P.P.,
 ACTING GENERAL MANAGER,
 PLANNING, REAL ESTATE AND ECONOMIC
 DEVELOPMENT DEPARTMENT
 CITY OF OTTAWA

PLAN 4M-
 I CERTIFY THAT THIS PLAN IS REGISTERED IN THE LAND REGISTRY OFFICE FOR THE LAND TITLES DIVISION OF OTTAWA-CARLETON NO. 4 AT _____ O'CLOCK ON THE _____ DAY OF _____ AND ENTERED IN THE PARCEL REGISTER FOR PROPERTY IDENTIFIERS _____ AND THE REQUIRED CONSENTS ARE REGISTERED AS PLAN DOCUMENT NO. _____

REPRESENTATIVE FOR LAND REGISTRAR

Lots 1 to 212, both inclusive, Blocks 213 to 253, both inclusive, the Streets, namely, Back Bush, Dagenham, David Weins, Drumcondra, Easthope, Kells, Kilcooly, Killisnoy, Kirkton, Kilnash, Letterkenney, Macroom, Maryborough, Mountmellick, the Street Widening, namely, Blocks 254 and 255 and the Reserves, namely, Blocks 256, 257, 258 and 259 are subject to easement, Inst. OC938586.

PLAN OF SUBDIVISION OF BLOCK 187 REGISTERED PLAN 4M-1703 and PART OF LOT 26, 27 and 28 CONCESSION 10 Geographic Township of Goulbourn CITY OF OTTAWA
 Surveyed by Annis, O'Sullivan, Vollebek Ltd.
 Scale 1 : 1000

Surveys Certificate
 I CERTIFY THAT:
 1. This survey and plan are correct and in accordance with the Surveys Act, the Surveyors Act and the Land Titles Act and the regulations made under them.
 2. The survey was completed on the _____ day of _____, 2023.

Date _____, 2023
 T. Hartwick
 Ontario Land Surveyor

This plan of survey relates to AOLS Plan Submission form number V-_____

OWNER'S CERTIFICATE
 THIS IS TO CERTIFY THAT:
 1. Lots 1 to 212, both inclusive, Blocks 213 to 253, both inclusive, and the Streets, namely, Back Bush, Dagenham, David Weins, Drumcondra, Easthope, Glentoran, Kells, Kilcooly, Killisnoy, Kirkton, Kilnash, Letterkenney, Macroom, Maryborough, Mountmellick, the Street Widening, namely, Blocks 254 and 255 and the Reserves, namely, Blocks 256, 257, 258 and 259 have been laid out in accordance with our instructions.
 2. The Streets and Street Widening are dedicated to City of Ottawa as public highways.

Dated the _____ day _____, 2023
 XXX, President
 XXXXXX
 I have authority to bind the corporation.

NOTES AND LEGEND

- denotes Survey Monument Planted
- Survey Monument Found
- SIB Standard Iron Bar
- SSIB Short Standard Iron Bar
- CC Cut Cross
- IB Iron Bar
- CB Chain Link Fence
- BF Board Fence
- (AOG) Annis, O'Sullivan, Vollebek Ltd.
- (P1) Registered Plan 4M-1503
- (P2) Registered Plan 4M-1619
- (P3) Registered Plan 4M-1703
- (P4) Registered Plan 4M-1620
- (P5) Plan 4R-23947

All planted survey monuments are IB's unless otherwise noted.
 All found survey monuments are (AOG), unless otherwise noted.
 Distances shown on curved limits are Arc distances unless otherwise noted.

Distances shown on this plan are ground distances and can be converted to grid distances by multiplying by the combined scale factor of 0.999915.

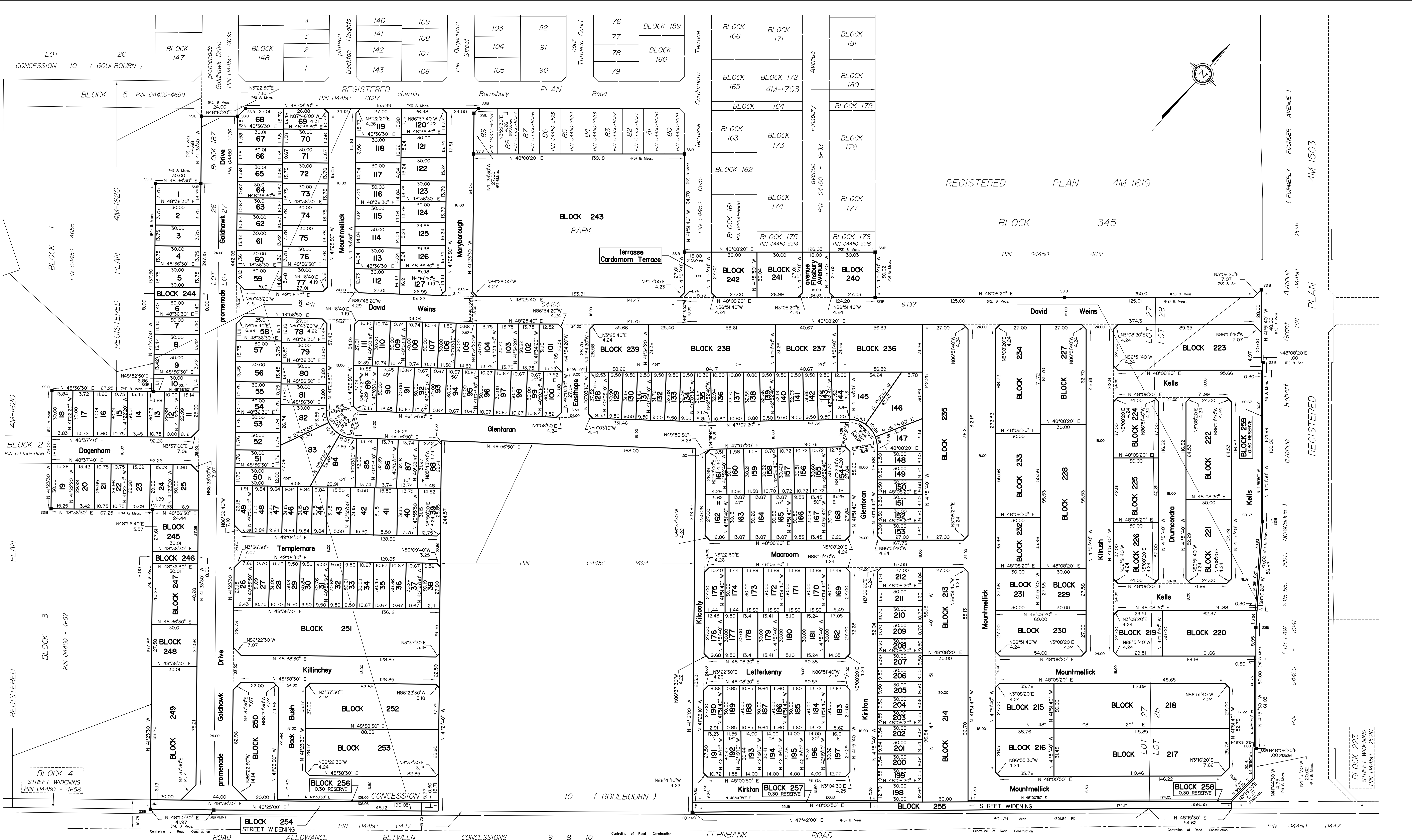
Bearings are grid, derived from Can-Net 2016 Real Time Network GPS observations on reference points A and B shown hereon, having a bearing of $N\alpha^\circ\beta'\gamma''W$ and are referenced to Specified Control Points 01919750705 and 01919770923, MTM Zone 9 (76°30' West Longitude) NAD-83 (original).

Coordinates are derived from Can-Net 2016 Real Time Network GPS observations referenced to Specified Control Points 01919750705 and 01919770923, MTM Zone 9 (76°30' West Longitude) NAD-83 (original).

Coordinate values are to urban accuracy in accordance with O. Reg. 216/10.

CURVE SCHEDULE

LOT	RADIUS	ARC	CHORD	BEARING



CONCESSION 9 8 10 (GOULBOURN) FERNBANK ROAD

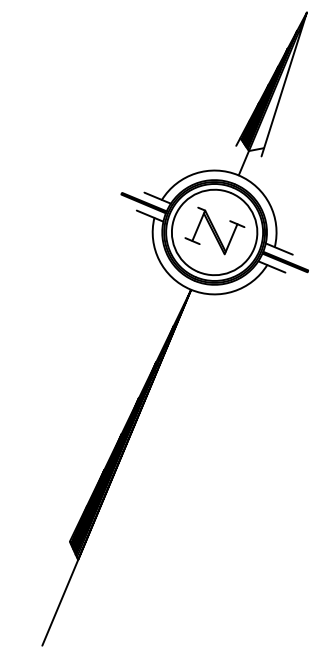
CONCESSION 9 (GOULBOURN)

CONCESSION 10 (GOULBOURN)

ROAD ALLOWANCE BETWEEN CONCESSIONS 9 8 10

ANIS, O'SULLIVAN, VOLLEBEK LTD.
 14 Courthouse Gate, Suite 500
 Mississauga, Ont. M2E 2S6
 Phone: (613) 727-0850 / Fax: (613) 727-1079
 Email: info@anniso.com

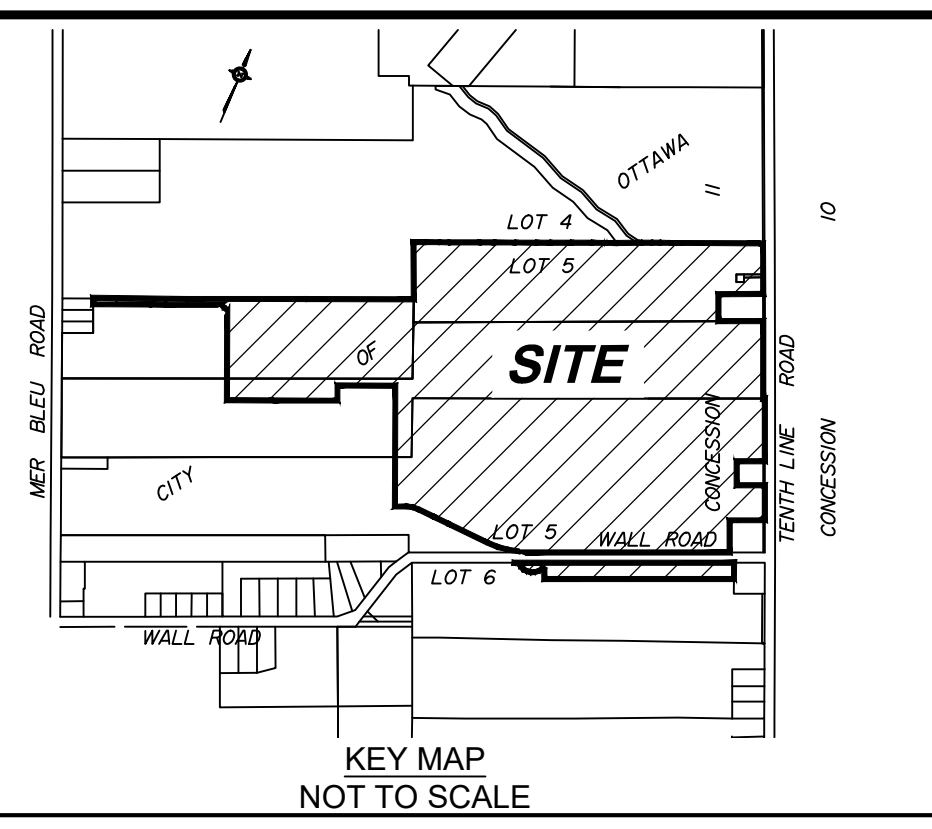
Ontario Land Surveyors (Lic. No. 22210-22) Chapter Pl. 15, 25 27 00 00 P.O. Box 518 P.O. Box 518



SUBJECT TO THE CONDITIONS, IF ANY, SET FORTH IN OUR LETTER DATED _____

THIS DRAFT PLAN IS APPROVED BY THE CITY OF OTTAWA UNDER SECTION 51-17 OF THE PLANNING ACT THIS _____ DAY OF _____ 2019.

JEFF McEWEN, P. ENG. MANAGER
DEVELOPMENT REVIEWER
PLANNING, INFRASTRUCTURE AND ECONOMIC DEVELOPMENT DEPARTMENT, CITY OF OTTAWA



DRAFT PLAN OF SUBDIVISION OF PART OF LOTS 5 AND 6 CONCESSION 11
Geographic Township of Cumberland
CITY OF OTTAWA
Prepared by Annis, O'Sullivan, Vollebek Ltd.

Scale 1:1250

Metric
DISTANCES SHOWN ON THIS PLAN ARE IN METRES AND CAN BE CONVERTED TO FEET BY DIVIDING BY 0.3048

Surveyor's Certificate
I CERTIFY THAT:
1. The survey and plan are correct and in accordance with the Survey Act, the Surveyors Act and the Land Titles Act and the regulations made under them.
2. The survey was completed on the _____ day of _____, 2019.

Date _____
V. Andrew Sheip
Ontario Land Surveyor

OWNER'S CERTIFICATE
This is to certify that we are the owners of the lands to be subdivided and that the plan was prepared in accordance with our instructions.

Date _____
Jim Burghout
CLARIDGE HOMES (MER BLEU) INC.
I have the authority to bind the corporation.

ADDITIONAL INFORMATION REQUIRED UNDER SECTION 51-17 OF THE PLANNING ACT

(a) see plan
(b) see plan
(c) see plan
(d) see plan
(e) single family, multi-family residential housing, commercial, park land, open space and storm water management
(f) see plan
(g) see plan
(h) City of Ottawa
(i) see site report
(j) see plan
(k) sanitary, storm sewers, municipal water, bell, hydro, cable and gas to be available
(l) see plan

REVISION SCHEDULE			
NO.	REVISION	DATE	BY
2	ADDED COMMERCIAL BLK. 336	AUG. 16, 2019	N
1	PLAN PREPARED	APR. 1, 2019	N

