

**ELEVATION NOTES**  
 1. Elevations shown are geodetic and are referred to the CGVD28 geodetic datum.  
 2. It is the responsibility of the user of this information to verify that the job benchmark has not been altered or disturbed and that its relative elevation and description agrees with the information shown on this drawing.

**UTILITY NOTES**  
 1. This drawing cannot be accepted as acknowledging all of the utilities and it will be the responsibility of the user to contact the respective utility authorities for confirmation.  
 2. Only visible surface utilities were located.  
 3. Sanitary and storm sewer grades and inverts were compiled from City of Ottawa Drawing 14317 (Sheets 102, 103 & 104).  
 4. A field location of underground plant by the pertinent utility authority is mandatory before any work involving breaking ground, probing, excavating etc.

**Notes & Legend**

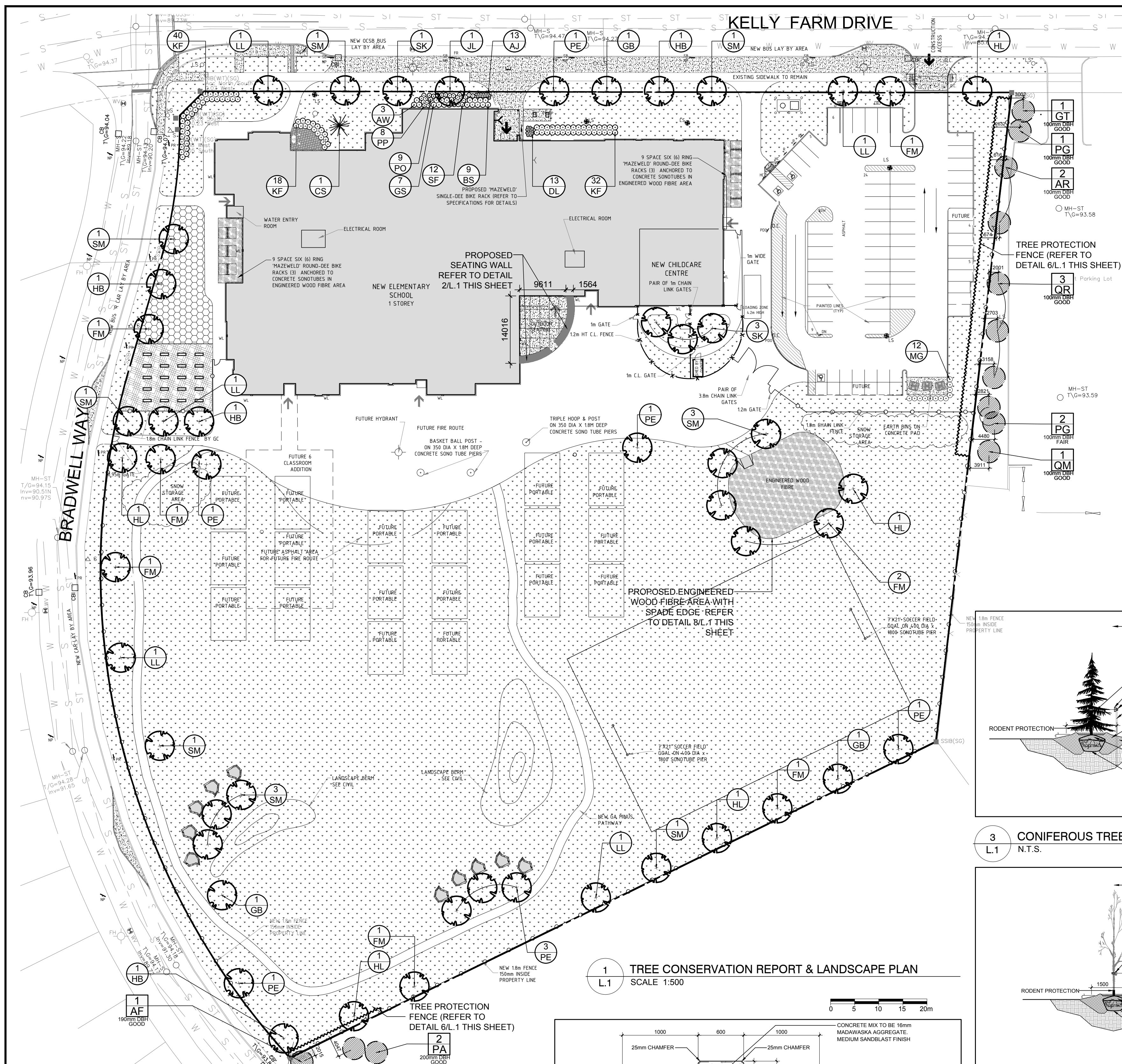
□	Denotes	Survey Monument Planted	□	Gate
■	Survey Monument Found	T/G	Top of Grate	
SIB	Standard Iron Bar	○	Deciduous Tree	
SSIB	Short Standard Iron Bar	●	Coniferous Tree	
(WIT)	Witness	●	Shrub	
Mocs.	Measured	—	Property Line	
(AOG)	Annis, O'Sullivan, Vollebek Ltd.	△ S	Sign	
(PI)	Registered Plan 4M-1273	CLF	Chain Link Fence	
(P2)	Registered Plan 4M-1321	TOS	Top of Slope	
(P3)	Registered Plan 4M-1369	BOS	Bottom of Slope	
○ MH-ST	Maintenance Hole (Storm Sewer)	∅	Diameter	
○ MH-S	Maintenance Hole (Sanitary)	+	Location of Elevations	
○ MH	Maintenance Hole (Unidentified)	—	Top of Concrete Curb Elevation	
○ W	Water Valve	—	Underground Storm Sewer	
○ LS	Light Standard	—	Underground Sanitary Sewer	
□	Catch Basin	—	Underground Water	
□ CBI	Catch Basin Inlet			
○ FH	Fire Hydrant			

REGISTERED PLAN 4M-1321  
 BLOCK 121  
 PIN 04328

ASSOCIATION OF ONTARIO  
 LAND SURVEYORS  
 PLAN SUBMISSION FORM  
 V-27702  
 THIS PLAN IS NOT VALID UNLESS  
 IT IS AN EMBOSSED ORIGINAL  
 COPY ISSUED BY THE SURVEYOR  
 In accordance with  
 Regulation 1026, Section 29 (3)

**Surveyor's Certificate**  
 I CERTIFY THAT:  
 1. This survey and plan are correct and in accordance with the Surveys Act and the Surveyors Act and the regulations made under them.  
 2. The survey was completed on the 4th day of July, 2022.  
 Date: July 6/22  
 Andrew Shelp  
 Ontario Land Surveyor

Bearings are grid, derived from Can-Net 2016 Real Time Network GPS observations, MTM Zone 9 (76°30' West Longitude) NAD-83 (original).  
 SITE AREA = 29417.80 m<sup>2</sup>  
 = 2.94 hectares



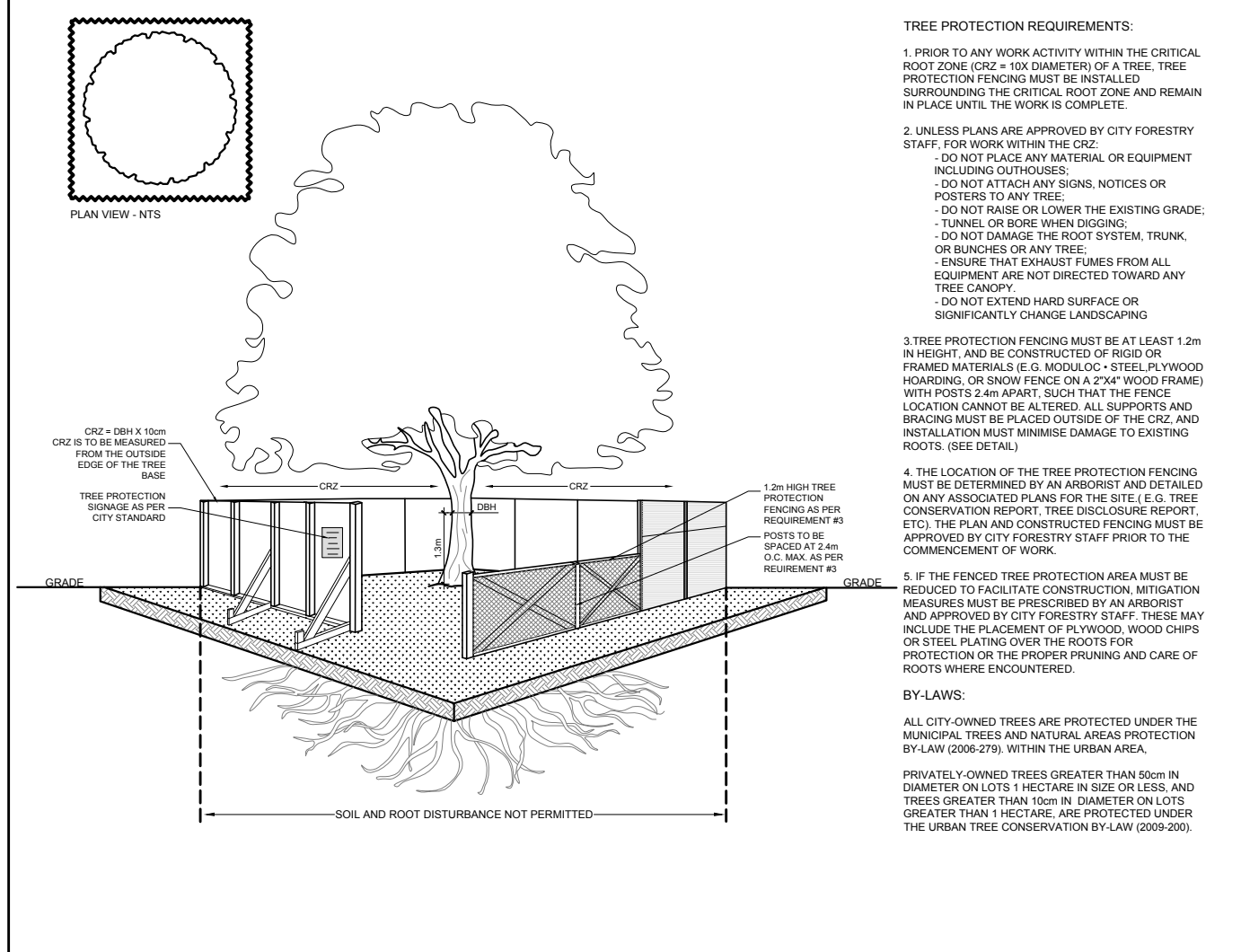
- ### GENERAL NOTES:
- It is the responsibility of the appropriate contractor or official to report any errors, omissions or discrepancies on this plan with actual site conditions to the Landscape Architect before proceeding with construction.
  - The contractor is to notify all utility companies and authorities prior to any excavation and ascertain locations of underground services.
  - The contractor is to reinstatement all areas and items damaged as a result of construction activity.
  - The contractor is to comply with all pertinent codes and by-laws.
  - The contractor is to maintain a positive surface run-off throughout the entire construction period.
  - The Landscape Architect is not responsible for subsurface conditions.
  - The contractor is to identify all existing trees to remain on site with the Landscape Architect prior to construction.
  - The contractor is to stake the proposed location of all plant material in conjunction with the Landscape Architect prior to excavation.
  - Minimum distances for selected deciduous trees are as follows:
    - Building Foundations 7.5m
    - Sidewalks 1.5m
    - Public Streets 2.5m
    - Underground Infrastructure 2.0m
  - All trees within 1m of underground utility trenches are to be excavated by hand.
  - Remove all protective wrapping from tree trunks after installation.
  - Staking of trees shall only be performed if necessary.
  - Ensure that mulch is pulled back a min. distance of 75mm from base of tree trunk.

**NOTE REGARDING EXISTING TREES ON 4140 KELLY FARM DRIVE:**

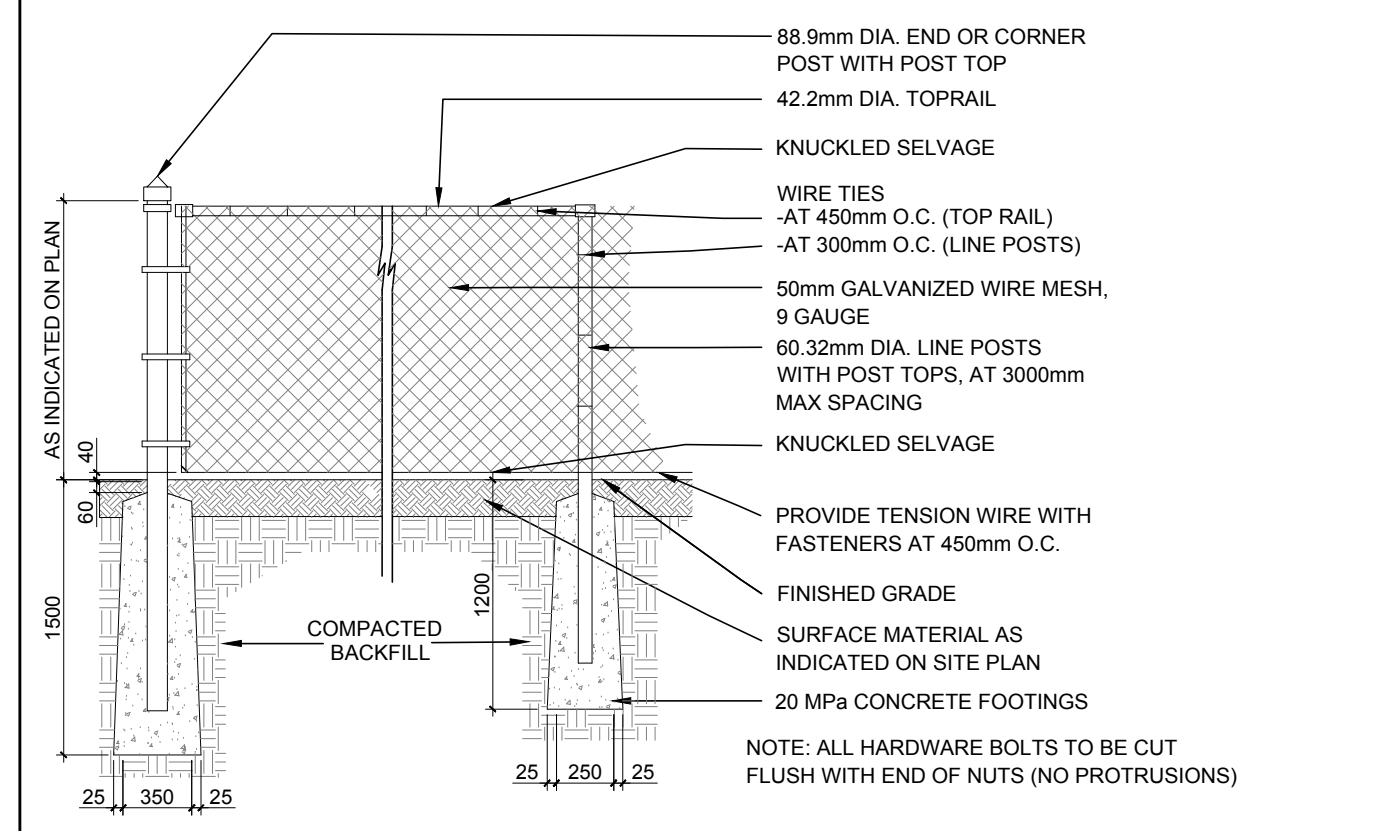
THE SITE FOR 4140 KELLY FARM DRIVE IS COMPRISED OF 80% SALIX SPP. (WILLOW) TREES IN FAIR TO GOOD CONDITION 100-300mm DBH AND 20% 100-200mm DBH POPULUS SPP. TREES IN GOOD CONDITION. ALL OF THESE TREES ARE TO BE REMOVED. BOTH WILLOW AND POPLAR TREE SPECIES ARE VERY WEAK WOODED WHICH MAKES THEM POTENTIALLY HAZARDOUS AND NOT SUITABLE SPECIES TO RETAIN ON A SCHOOL SITE.

### EXISTING TREE LIST

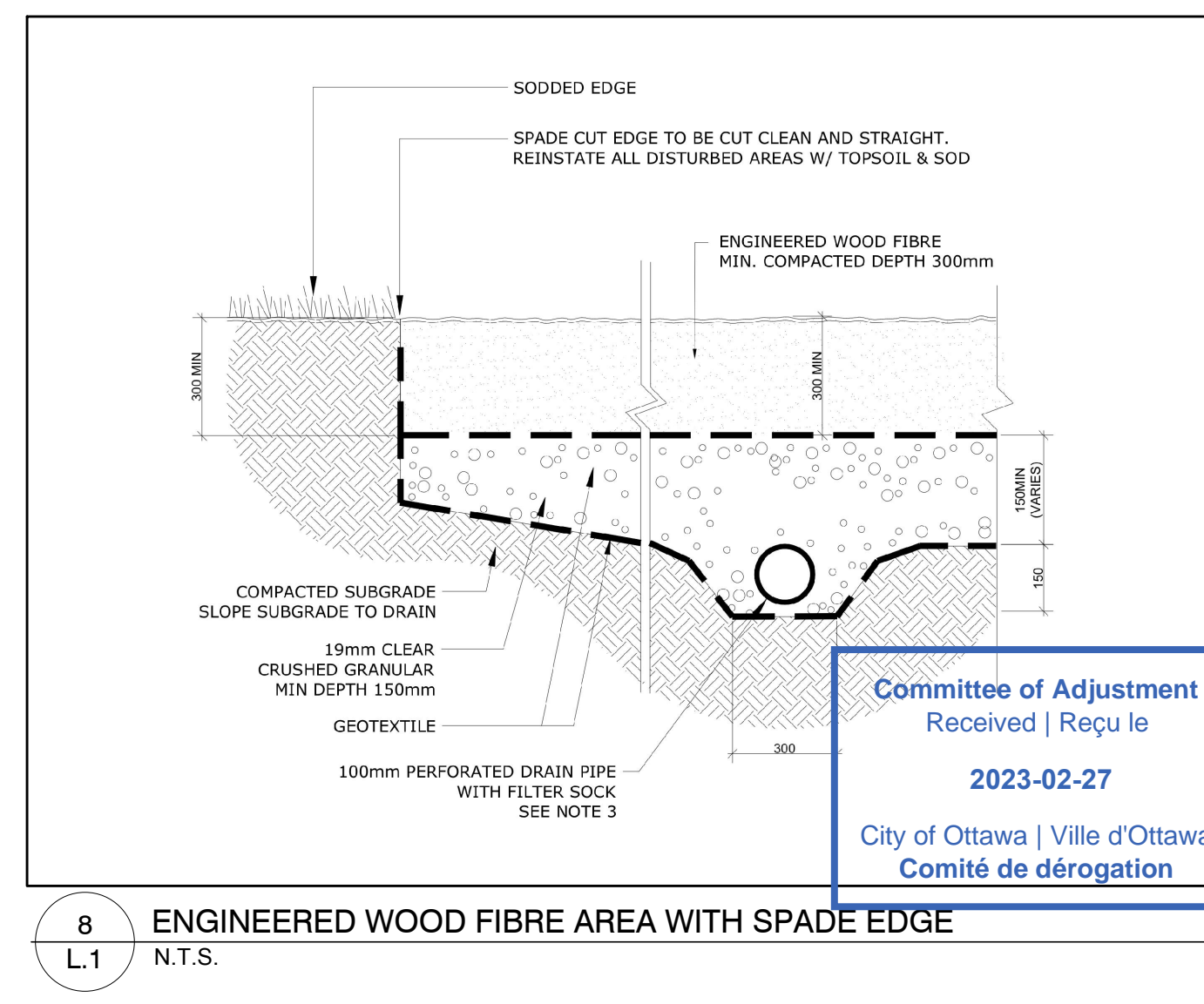
KEY	QTY	BOTANICAL NAME	COMMON NAME	SIZE	CONDITION	REMARKS	OWNERSHIP
AF	1	<i>Acer x freemanii</i>	Freeman's Maple	190mm DBH	GOOD	TO REMAIN	City of Ottawa
AR	2	<i>Acer rubrum</i>	Red Maple	100mm DBH	GOOD	TO REMAIN	4180 Kelly Farm
PA	1	<i>Gleditsia triacanthos</i>	Honey Locust	100mm DBH	GOOD	TO REMAIN	4180 Kelly Farm
PG	3	<i>Picea abies</i>	Norway Spruce	200mm DBH	GOOD	TO REMAIN	City of Ottawa
QM	1	<i>Quercus macrocarpa</i>	Bur Oak	100mm DBH	GOOD	TO REMAIN	4180 Kelly Farm
QR	3	<i>Quercus rubra</i>	Red Oak	100mm DBH	GOOD	TO REMAIN	4180 Kelly Farm



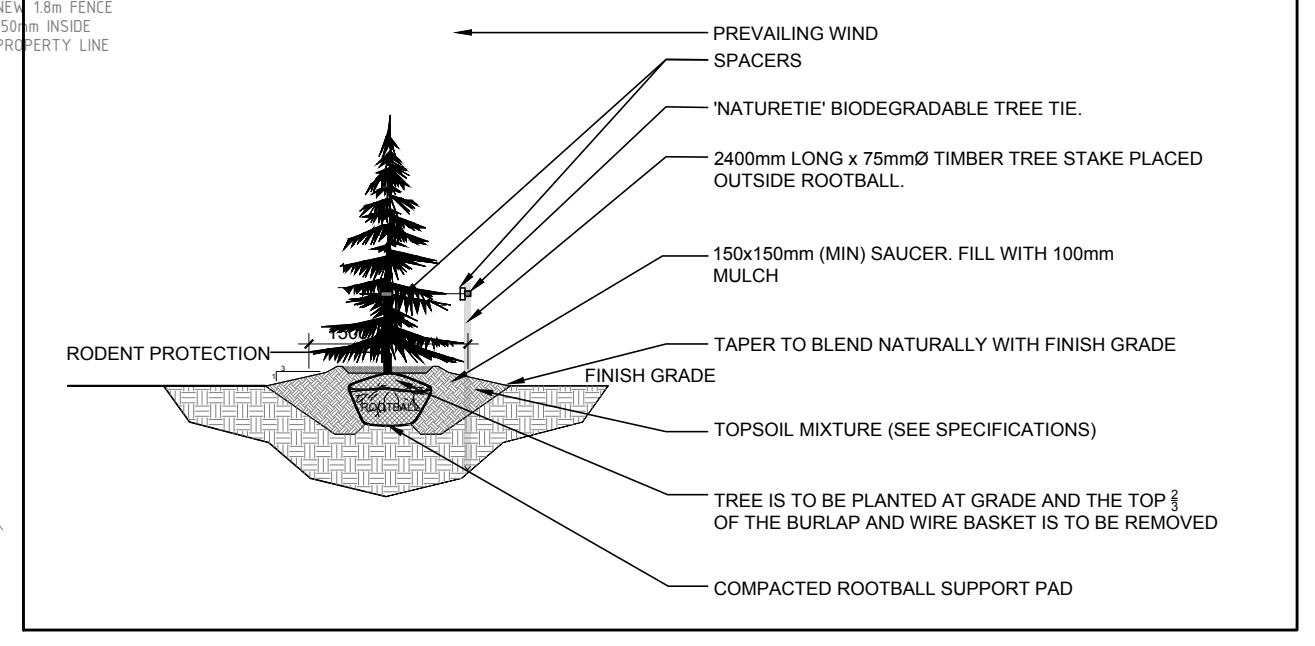
**6 TREE PROTECTION FENCING**  
SCALE: N.T.S.



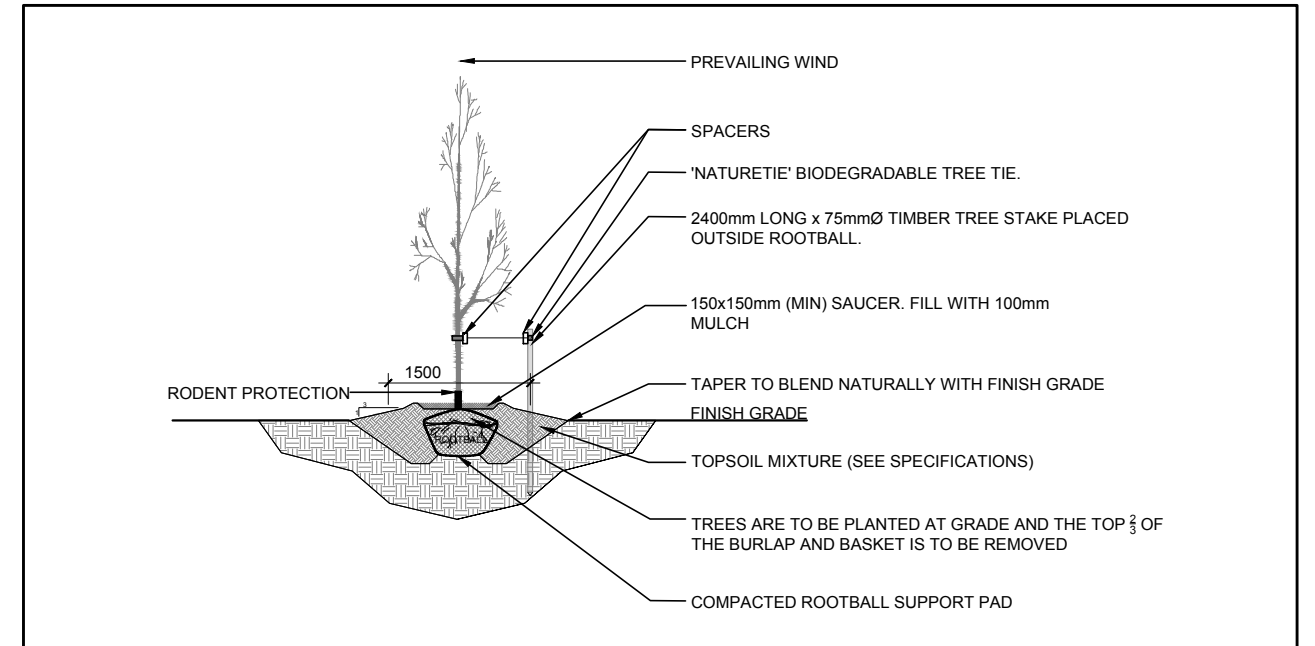
**7 GALVANIZED CHAIN LINK FENCE**  
SCALE: N.T.S.



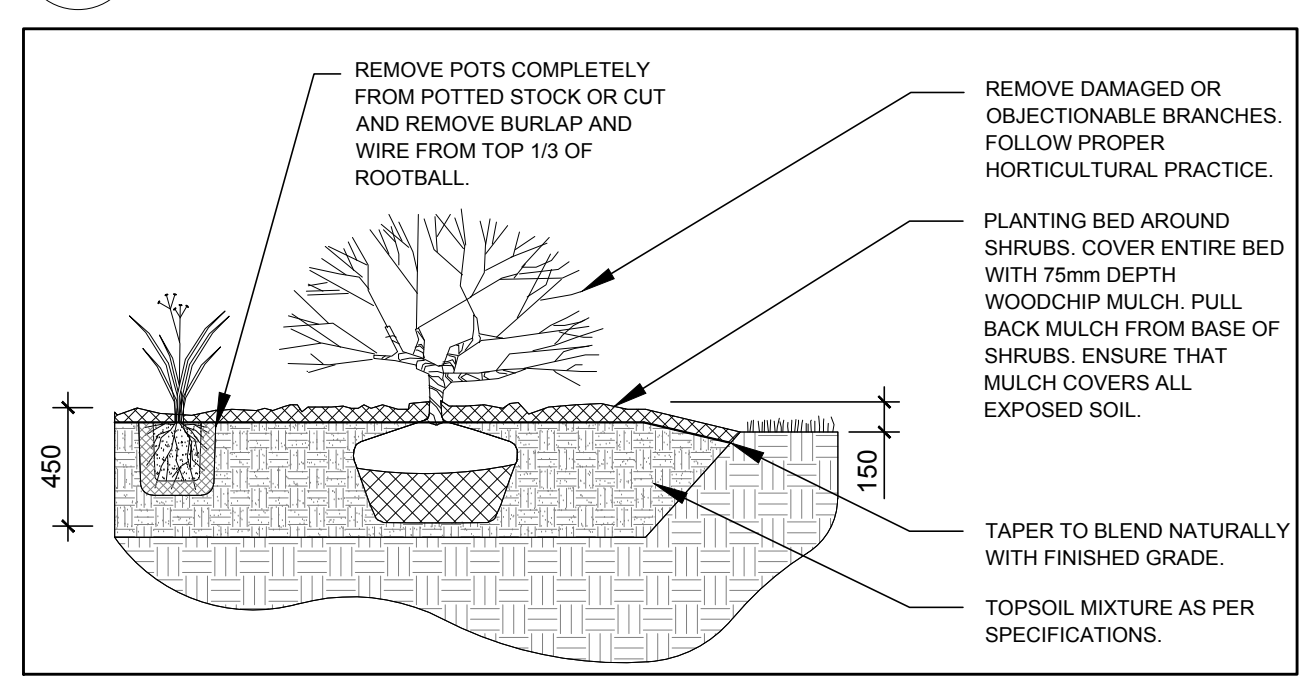
**8 ENGINEERED WOOD FIBRE AREA WITH SPADE EDGE**  
SCALE: N.T.S.



**3 CONIFEROUS TREE PLANTING**  
SCALE: N.T.S.

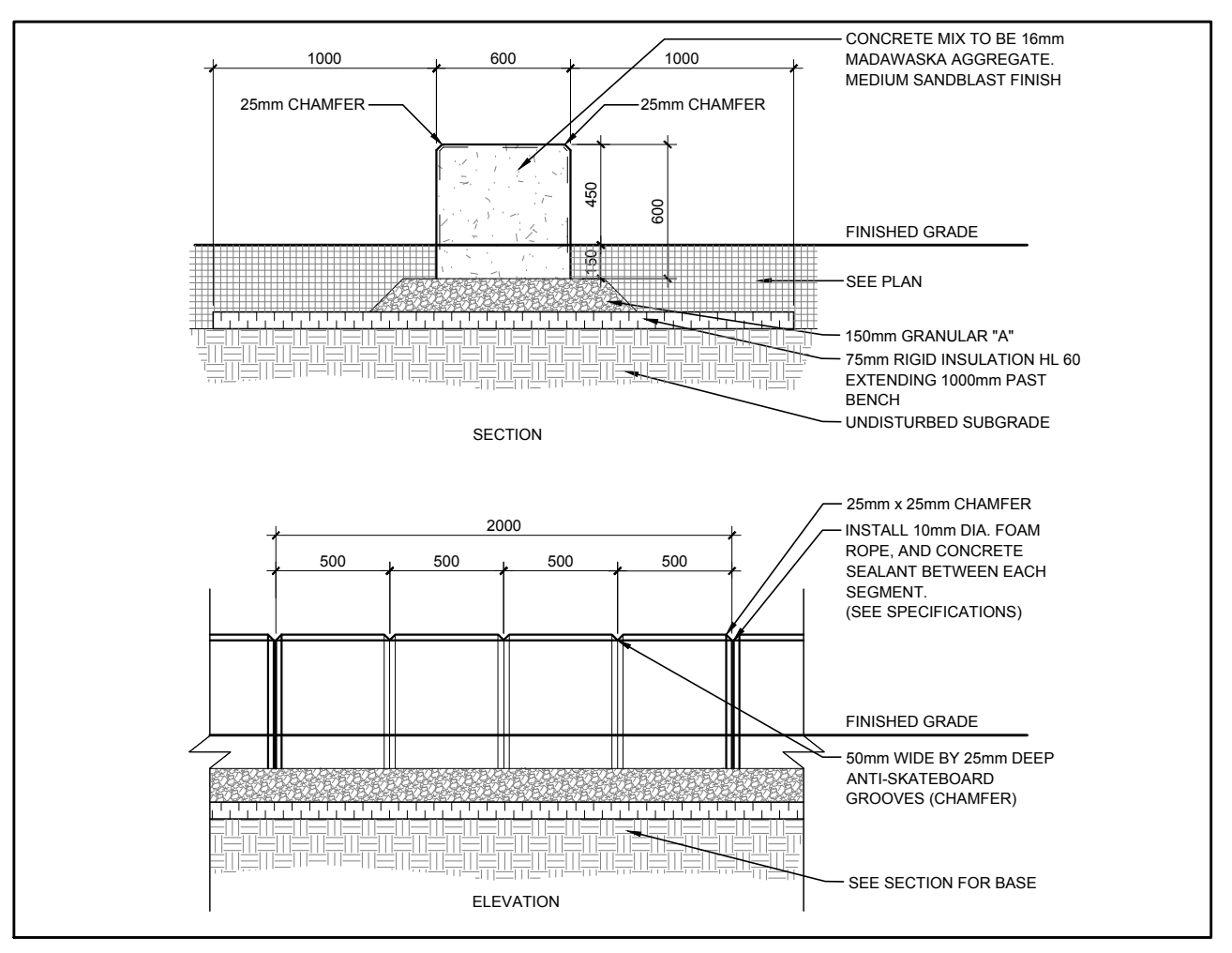


**4 DECIDUOUS TREE PLANTING**  
SCALE: N.T.S.



**5 SHRUB / ORNAMENTAL GRASS PLANTING**  
SCALE: N.T.S.

**1 TREE CONSERVATION REPORT & LANDSCAPE PLAN**  
SCALE: 1:500



**2 SEATING WALL**  
SCALE: N.T.S.

### PROPOSED PLANT LIST

KEY	QTY	BOTANICAL NAME	COMMON NAME	SIZE	CONDITION	REMARKS
<b>TREES</b>						
CS	8	<i>Picea pungens</i>	Colorado Spruce	1800mm ht.	B&B	
FM	8	<i>Acer x freemanii</i>	Freeman's Maple	60mm cal.	B&B	
GB	3	<i>Ginkgo biloba</i>	Maidenhair Tree	60mm cal.	B&B	Male tree
HB	4	<i>Celtis occidentalis</i>	Hackberry	60mm cal.	B&B	
HL	5	<i>Gleditsia triacanthos</i>	Honey Locust	60mm cal.	B&B	
JL	1	<i>Syringa reticulata</i>	Japanese Tree Lilac	60mm cal.	B&B	Single leader
LL	5	<i>Tilia cordata</i>	Little Leaf Linden	60mm cal.	B&B	
PE	8	<i>Ulmus wilsoniana 'Prospector'</i>	Prospector Elm	60mm cal.	B&B	
SK	4	<i>Gleditsia triacanthos 'Draves'</i>	Street Keeper Honey Locust	60mm cal.	B&B	
SM	12	<i>Acer saccharum</i>	Sugar Maple	60mm cal.	B&B	
<b>SHRUBS</b>						
AW	3	<i>Spiraea x 'Anthony Waterer'</i>	Anthony Waterer Spiraea	600mm ht.	Potted	1000 mm o.c.
BS	9	<i>Spiraea x vanhouttei</i>	Bridalweath Spiraea	800 mm ht.	Potted	1000 mm o.c.
GS	7	<i>Spiraea x arguta</i>	Garland Spiraea	600mm ht.	Potted	1000 mm o.c.
PO	9	<i>Potentilla fruticosa 'Goldfinger'</i>	Goldfinger Potentilla	600mm ht.	Potted	800 mm o.c.
PP	8	<i>Spiraea japonica 'Pink Princess'</i>	Pink Princess Spiraea	600mm ht.	Potted	800 mm o.c.
SF	12	<i>Sorbaria sorbifolia 'Sem'</i>	Sem False Spiraea	600mm ht.	Potted	800 mm o.c.
<b>PERENNIALS</b>						
AJ	13	<i>Sedum 'Autumn Joy'</i>	Autumn Joy Sedum	100mm pot	Potted	400 mm o.c.
DL	13	<i>Hemerocallis 'Stella D'Oro'</i>	Stella D'Oro Daylily	100mm pot	Potted	400 mm o.c.
KF	90	<i>Calamagrostis 'Karl Foerster'</i>	Feather Reed Grass	250mm pot	Potted	800 mm o.c.
MG	12	<i>Miscanthus sinensis 'Giganteus'</i>	Giant Chinese Silvergrass	250mm pot	Potted	1000 mm o.c.



**OTTAWA CATHOLIC SCHOOL BOARD**

ARCHITECTS: **P R T Y** PYE & RICHARDS - TEMPRANO & YOUNG ARCHITECTS INC.

824 Meath St. Suite 200  
Ottawa, ON K1Z 6E8

613.724.7700  
info@prty.ca

CIVIL ENGINEERS:  
**JP2g Consultants Inc.**  
1150 Morrison Dr., Suite 410  
Ottawa, ON K2H 8S8  
Tel: (613) 828-7800

### LEGEND

- PROPOSED DECIDUOUS TREE
- PROPOSED CONIFEROUS TREE
- PROPOSED SHRUBS / PERENNIALS
- PROPOSED ENGINEERED WOOD FIBRE
- PROPOSED SOD
- PROPOSED NATURALIZATION PLANTINGS
- PROPOSED 1.8m HT. GALVANIZED CHAIN LINK FENCE
- PROPOSED 1.2m HT. GALVANIZED CHAIN LINK FENCE
- PROPOSED TREE PROTECTION FENCE
- PROPOSED ASPHALT ACCESS RAMP
- EXISTING TREE TO REMAIN

No.	Issue	Date	DR	CK
4	ISSUED FOR MINOR VARIANCE	02/16/2023	ML	JL
3	ISSUED FOR DISCUSSION AND REVIEW	02/06/2023	ML	JL
2	ISSUED FOR BUILDING PERMIT	12/12/2022	ML	JL
1	ISSUED FOR SITE PLAN CONTROL	10/07/2022	ML	JL

**JAMES B. LENNOX & ASSOCIATES INC.**  
LANDSCAPE ARCHITECTS  
3332 CARLING AVE. OTTAWA, ONTARIO K2H 5A8  
Tel: (613) 722-5168 Fax: (866) 343-3942

PROJECT: **FINDLAY CREEK SCHOOL**  
4140 KELLY FARM DRIVE, OTTAWA ON

DRAWING: **TREE CONSERVATION REPORT & LANDSCAPE PLAN**

SCALE: AS SHOWN

START DATE: AUGUST 2022

PROJECT NO.: 2PRTY2271

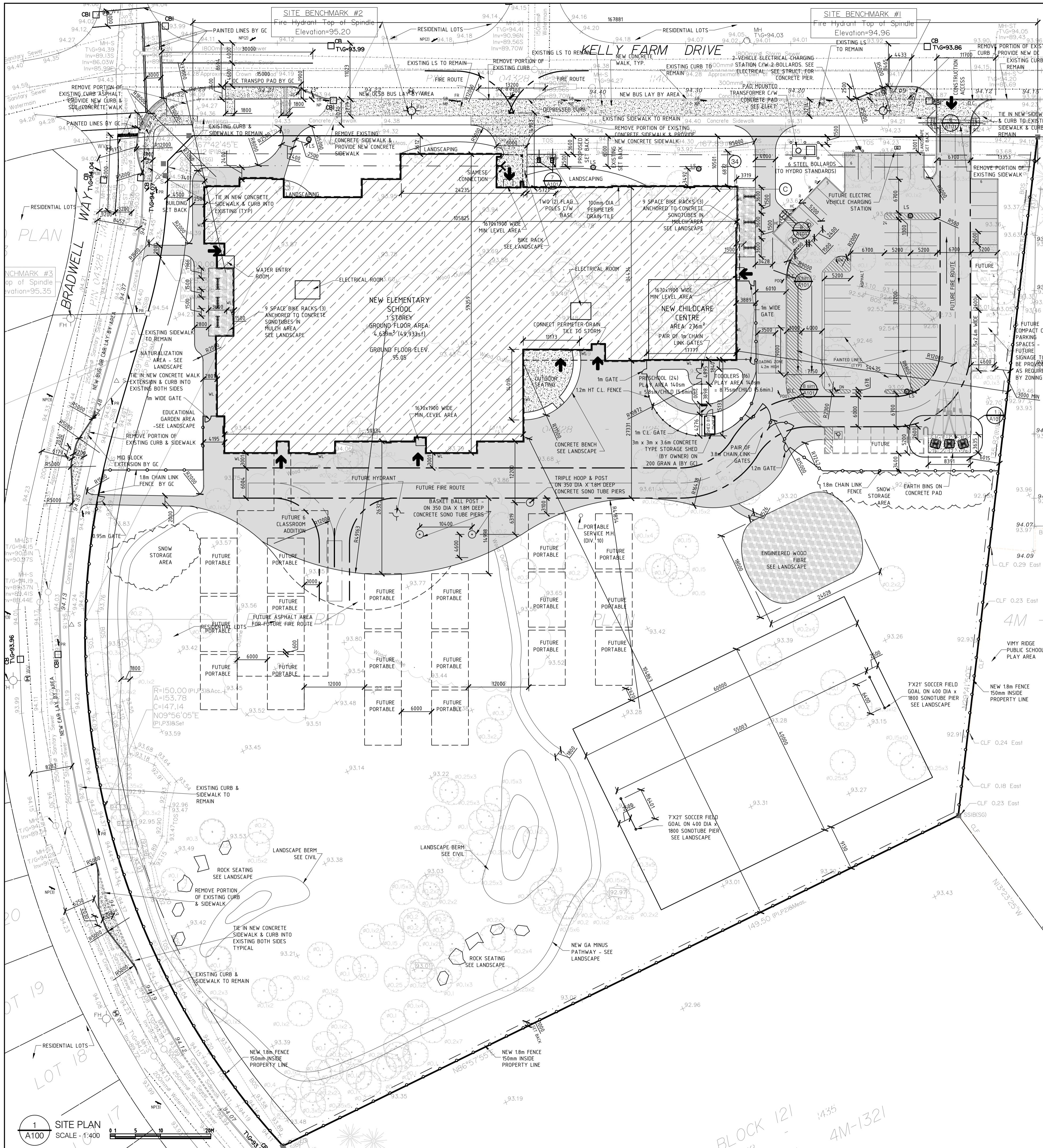
DRAWING NO.: **L.1**

PLOT SIZE ARCH-D

**Committee of Adjustment Received | Reçu le**  
2023-02-27  
City of Ottawa | Ville d'Ottawa  
Comité de dérogation

D07-12-22-0146

**#18874**



ZONING REQUIREMENTS			
Municipality	City of Ottawa		
Legal Description	Block 147 Registered Plan 4M-1273 City of Ottawa, Formerly the City of Gloucester		
Survey Information	Survey Information Prepared By: Annis, O'Sullivan, Vollebck Ltd dated 6 July 2022		
Common Address	4140 Kelly Farm Dr	Ottawa,	Ontario
Project Information	Lot Size	29,410 sm	
	Ground Floor Area	4,639sm	
Zoning	1E H(15)	Institutional 1	
	Bylaw Provisions	Proposed	Compliance
Minimum Lot Width	15m	167.9m	Complies
Minimum Lot Area	400 sm	29,410sm	Complies
Minimum Front Yard Setback	3.6m	3.6m	Complies
Minimum Rear Yard Setback	1m	104.9m	Complies
Minimum Interior Side Yard Setback	1m	54.4m	Complies
Minimum Corner Side Yard Setback	4.5m	7.4m	Complies
Maximum Building Height	15.0m	7.65m	Complies
Required Parking (Schedule 1A - Area C) Rate = 1.5 per classroom (includes 16 classrooms + 6 kindergartens) Childcare 1/50sm	1.5 x 22 classrooms = 33 Spaces + 275sm Childcare/50sm = 6 Spaces 39 Total spaces required	50 Spaces Proposed	Complies
Future Parking (18 future portables)	1.5 x 18 portables = 27 additional Spaces total (27 + 39) = 66 Spaces	16 Future Spaces total (50 + 16) = 66	Complies
HC Parking Requirements	Based on 50 parking spaces provided	2 HC Spaces Required 1 @ type A 1 @ type B	Complies
Required Bicycle Parking (1/100sm Gross Floor Area)	1/100sm X 4,647sm = 47 spaces required	48 spaces (6 Bike Racks @ 8 spaces)	Complies
Required Loading Zones	1 Loading Zone = 3.5m(W) X 7m (L) x 4.2m (H) As per zoning Section 113 (4) & (5)	1	Complies
Minimum Width of Landscaped Area (Landscape Buffer)	Abutting A Street = 3.0m Abutting residential, institutional = 3.0m Other Cases - None	3.0m 3.0m N/A	Complies
Landscaped Provisions for Parking Lots	Landscape buffer width: 3m abutting a street, 1.5m not abutting a street Refuse collection areas must be minimum 9.0m from property line abutting a street Refuse collection areas must be minimum 3.0m from other property lines Refuse collection area must be screened with minimum 2.0m height screen	4m Earth bins provided	Complies
	Minimum landscaped area of parking lot = 15% Landscape around Parking = 478sm = >15%	Parking Lot Area = 1782sm Landscape around Parking = 478sm = >15%	
ZONING INFORMATION			
<b>GENERAL NOTES:</b>			
1. SEE SITE SERVICES, ELECTRICAL & MECHANICAL DRAWINGS FOR UNDERGROUND UTILITIES LINES AND FOR NEW GRADING EXCAVATE BACKFILL & PROVIDE CONCRETE TO REQUIREMENTS OF MECHANICAL, ELECTRICAL & SITE SERVICES DRAWINGS AND SPECIFICATIONS AND TO REQUIREMENTS OF AUTHORITIES HAVING JURISDICTION.			
2. PROVIDE 0.5M RADIUS FOR CONCRETE CURBS UNLESS OTHERWISE NOTED			
3. PERFORM LANDSCAPE & SITE WORKS INCLUDING WALKWAYS TIE INS WITHIN THE ROAD ALLOWANCE & SITE SERVICES AS INDICATED			
4. CONTRACTOR SHALL CONSTRUCT BUS LAY BY & CAR LAY BY, INCLUDING CURBS, WALKS, ASPHALT, PAVING, GRAN, BASES, TOPSOIL & SOD			
5. SEE LANDSCAPE FOR EXISTING TREE REMOVALS			
6. ROADWAY MODIFICATIONS TO BE COMPLETED AS EARLY AS POSSIBLE AS PER OC TRANSPD SITE PLAN CONTROL REQUEST.			
7. GC TO ERECT CONSTRUCTION FENCING ALONG PROPERTY LINE WITH OCDSB SCHOOL FOR FULL DURATION OF CONSTRUCTION PERIOD			

**OTTAWA CATHOLIC SCHOOL BOARD**

570 WEST HUNT CLUB ROAD, NEPEAN, ON, K2G 3K4 (613)224-4455

---

**SITE LEGEND**

- FIRE HYDRANT - SEE MECH
- DEPRESSED CURB - SEE CIVIL
- CONCRETE CURB - SEE CIVIL
- CONCRETE SIDEWALK - SEE CIVIL
- ASPHALT - SEE CIVIL
- TACTILE WALKING SURFACE INDICATOR (TWSI)
- ENGINEERED WOOD FIBRE - SEE LANDSCAPE
- CATCH BASIN, NEW - SEE CIVIL
- MAN HOLE, NEW - SEE CIVIL
- OC TRANSPD BUS STOP SIGN
- HANDICAP PARKING SIGN
- FIRE ROUTE SIGN RX152 @ 25m SPACING
- ONE WAY TRAFFIC SIGN
- DO NOT ENTER SIGN
- NO PARKING SIGN (RB-52) @ 25M SPACING
- NO PARKING SIGN (RB-55R)
- NO PARKING SIGN (RB-51)
- SCHOOL BUS STOPPING ZONE SIGN (RB89R)
- PARENT DROP-OFF ZONE SIGN -
- PARKING RESTRICTED 30 MIN. MON-FRI 7:00AM-4PM SIGN (RB-53R/RB-53L) @25M SPACING
- RESERVED FOR DAYCARE - POST ONLY BY GC
- BORE HOLE
- TEST PIT
- LIGHT STANDARD - SEE ELECTRICAL
- WALL MOUNT LIGHT FIXTURE - SEE ELEC.
- FLAG POLE
- EXISTING GRADE
- 18m HT. GALVANIZED CHAIN LINK FENCE
- 1.2m HT. GALVANIZED CHAIN LINK FENCE
- GAS METER
- ENTRANCE ARROW
- PAINTED LINES / NO PARKING

---

REV	REVISION DESCRIPTION	DATE
8	ISSUED FOR MINOR VARIANCE	21/FEB/2023
7	ISSUED FOR TENDER	15/FEB/2023
6	ISSUED FOR SITE PLAN CONTROL REV 1	9/FEB/2023
5	ISSUED FOR 99% CLIENT REVIEW	6/FEB/2023
4	ISSUED FOR BUILDING PERMIT	14/OCT/2022
3	ISSUED FOR SITE PLAN CONTROL	7/OCT/2022
2	ISSUED FOR 85% DRAWINGS & COST ESTIMATE	23/SEPT/2022
1	ISSUED FOR CLIENT REVIEW	25/AUG/2022

---

THIS DRAWING IS THE EXCLUSIVE PROPERTY OF PYE & RICHARDS - TEMPRANO & YOUNG ARCHITECTS INC. COPYRIGHT RESERVED

CONTRACTOR TO VERIFY ALL DIMENSIONS AND NOTIFY THE ARCHITECT OF ANY DIMENSIONAL ERRORS AND/OR POSSIBLE TRADE INTERFERENCE PRIOR TO COMMENCEMENT OF THE WORK. DO NOT SCALE DRAWINGS.

**SEAL**

ISABEL RICHER  
LICENCE 7850  
2023-02-16

**PROJECT NORTH**

Not for construction unless SEALED and SIGNED

---

**P R** PYE & RICHARDS -  
**T Y** TEMPRANO & YOUNG  
ARCHITECTS INC.

824 Meath St. Suite 200  
Ottawa, ON K1Z 6E8

613.724.7700  
info@prty.ca

---

**PROJECT**

OCBSB FINDLAY CREEK ELEMENTARY SCHOOL

4140 Kelly Farm Dr. OTTAWA, ONTARIO

---

**DRAWING**

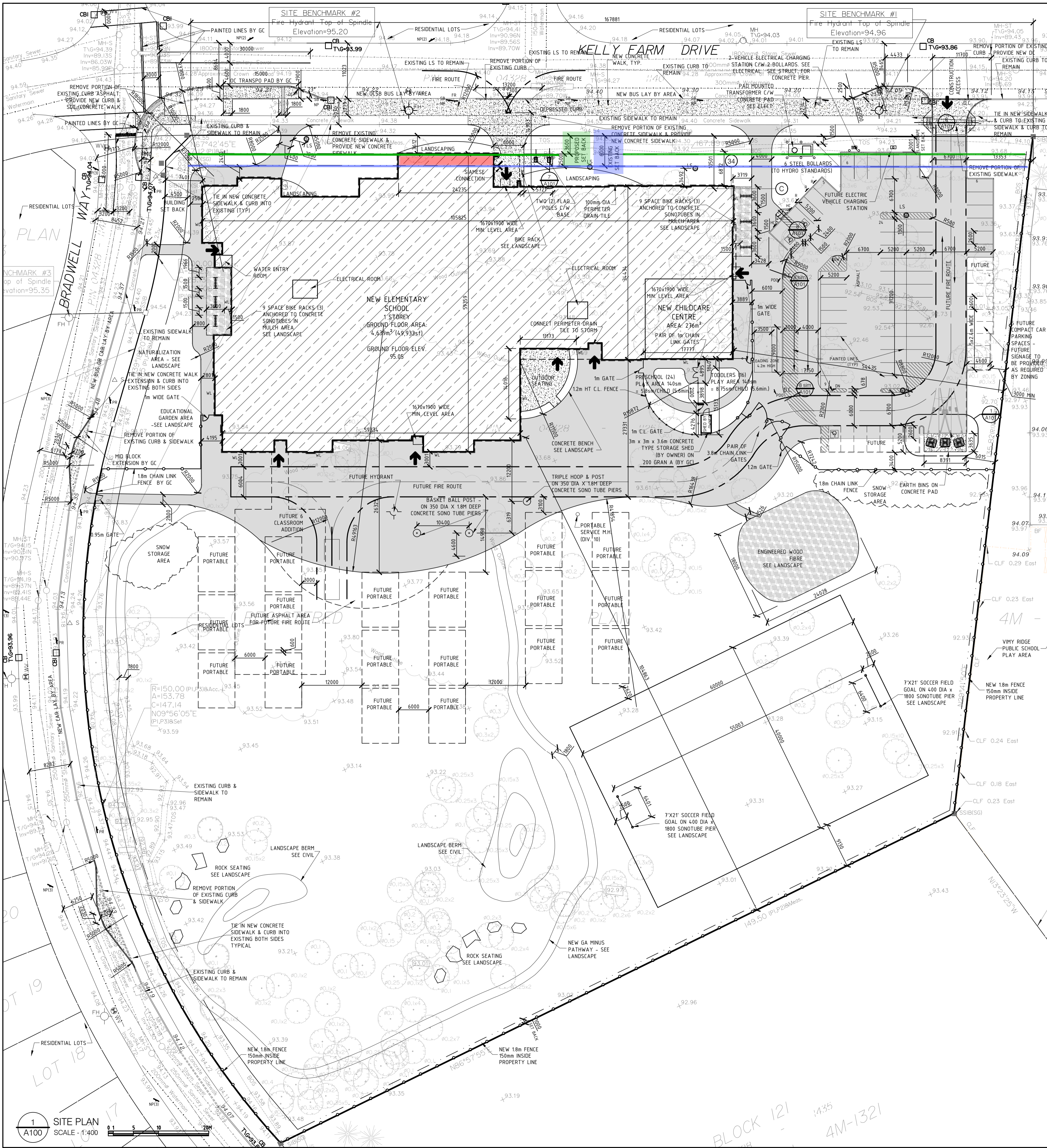
SITE PLAN  
ZONING MATRIX

---

PROJECT NO.	22012	DRAWING NO.	
SCALE -	AS NOTED		
DRAWN -	I.R.		<b>A100</b>
CHECKED -	I.R.		
PLOT DATE -	16/02/2023	PLOTTED BY:	

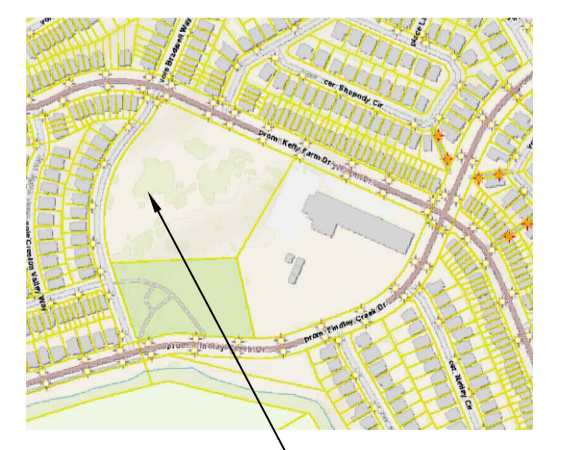
1 SITE PLAN  
A100 SCALE: 1:400

BLOCK 121 1435 4M-1321



ZONING REQUIREMENTS			
Municipality	City of Ottawa		
Legal Description	Block 147 Registered Plan 4M-1273 City of Ottawa, Formerly the City of Gloucester		
Survey Information	Survey Information Prepared By: Annis, O'Sullivan, Vollebck Ltd dated 6 July 2022		
Common Address	4140 Kelly Farm Dr	Ottawa,	Ontario
Project Information	Lot Size	29,410 sm	
	Ground Floor Area	4,639sm	
Zoning	1E H(15)	Institutional 1	
	Bylaw Provisions	Proposed	Compliance
Minimum Lot Width	15m	167.9m	Complies
Minimum Lot Area	400 sm	29,410sm	Complies
Minimum Front Yard Setback	3.6m	3.6m	Complies
Minimum Rear Yard Setback	1m	104.9m	Complies
Minimum Interior Side Yard Setback	1m	54.4m	Complies
Minimum Corner Side Yard Setback	4.5m	7.4m	Complies
Maximum Building Height	15.0m	7.65m	Complies
Required Parking (Schedule 1A - Area C) Rate = 1.5 per classroom (includes 16 classrooms + 6 kindergartens) Childcare 1/50sm	1.5 x 22 classrooms = 33 Spaces + 275sm Childcare/50sm = 6 Spaces 39 Total spaces required	50 Spaces Proposed	Complies
Future Parking (18 future portables)	1.5 x 18 portables = 27 additional Spaces total (27 + 39) = 66 Spaces	16 Future Spaces total (50 + 16) = 66	Complies
HC Parking Requirements	Based on 50 parking spaces provided	2 HC Spaces Required 1 @ type A 1 @ type B	Complies
Required Bicycle Parking (1/100sm Gross Floor Area)	1/100sm X4,647sm =47 spaces required	48 spaces (6 Bike Racks @ 8 spaces)	Complies
Required Loading Zones	1 Loading Zone = 3.5m(W) X 7m (L) x 4.2m (H) As per zoning Section 113 (4) & (5)	1	Complies
Minimum Width of Landscaped Area (Landscape Buffer)	Abutting A Street = 3.0m Abutting residential, institutional = 3.0m Other Cases - None	3.0m 3.0m N/A	Complies
Landscaped Provisions for Parking Lots	Landscape buffer width: 3m abutting a street, 1.5m not abutting a street Refuse collection areas must be minimum 9.0m from property line abutting a street Refuse collection areas must be minimum 3.0m from other property lines Refuse collection area must be screened with minimum 2.0m height screen	4m Earth bins provided	Complies
	Minimum landscaped area of parking lot = 15% Landscape around Parking =478sm	Parking Lot Area =1782sm Landscape around Parking =478sm = >15%	

ZONING INFORMATION	
<b>GENERAL NOTES:</b>	
1.	SEE SITE SERVICES, ELECTRICAL & MECHANICAL DRAWINGS FOR UNDERGROUND UTILITIES LINES AND FOR NEW GRADING EXCAVATE BACKFILL & PROVIDE CONCRETE TO REQUIREMENTS OF MECHANICAL, ELECTRICAL & SITE SERVICES DRAWINGS AND SPECIFICATIONS AND TO REQUIREMENTS OF AUTHORITIES HAVING JURISDICTION.
2.	PROVIDE 0.5M RADIUS FOR CONCRETE CURBS UNLESS OTHERWISE NOTED
3.	PERFORM LANDSCAPE & SITE WORKS INCLUDING WALKWAYS TIE INS WITHIN THE ROAD ALLOWANCE & SITE SERVICES AS INDICATED
4.	CONTRACTOR SHALL CONSTRUCT BUS LAY BY & CAR LAY BY, INCLUDING CURBS, WALKS, ASPHALT, PAVING, GRAN, BASES, TOPSOIL & SOD
5.	SEE LANDSCAPE FOR EXISTING TREE REMOVALS
6.	ROADWAY MODIFICATIONS TO BE COMPLETED AS EARLY AS POSSIBLE AS PER OC TRANSPD SITE PLAN CONTROL REQUEST.
7.	GC TO ERECT CONSTRUCTION FENCING ALONG PROPERTY LINE WITH OCDSB SCHOOL FOR FULL DURATION OF CONSTRUCTION PERIOD



**OTTAWA CATHOLIC SCHOOL BOARD**

570 WEST HUNT CLUB ROAD, NEPEAN, ON, K2G 3K4 (613)224-4455

---

**SITE LEGEND**

- FIRE HYDRANT - SEE MECH
- DEPRESSED CURB - SEE CIVIL
- CONCRETE CURB - SEE CIVIL
- CONCRETE SIDEWALK - SEE CIVIL
- ASPHALT - SEE CIVIL
- TACTILE WALKING SURFACE INDICATOR (TWSI)
- ENGINEERED WOOD FIBRE - SEE LANDSCAPE
- CATCH BASIN, NEW - SEE CIVIL
- MAN HOLE, NEW - SEE CIVIL
- OC TRANSPD BUS STOP SIGN
- HANDICAP PARKING SIGN
- FIRE ROUTE SIGN RX152 @ 25m SPACING
- ONE WAY TRAFFIC SIGN
- DO NOT ENTER SIGN
- NO PARKING SIGN (RB-52) @ 25M SPACING
- NO PARKING SIGN (RB-55R)
- NO PARKING SIGN (RB-51)
- SCHOOL BUS STOPPING ZONE SIGN (RB89R)
- PARENT DROP-OFF ZONE SIGN -
- PARKING RESTRICTED 30 MIN. MON-FRI 7:00AM-4PM SIGN (RB-53R/RB-53L) @25M SPACING
- RESERVED FOR DAYCARE - POST ONLY BY GC
- BORE HOLE
- TEST PIT
- LIGHT STANDARD - SEE ELECTRICAL
- WALL MOUNT LIGHT FIXTURE - SEE ELEC.
- FLAG POLE
- EXISTING GRADE
- 18m HT. GALVANIZED CHAIN LINK FENCE
- 12m HT. GALVANIZED CHAIN LINK FENCE
- GAS METER
- ENTRANCE ARROW
- PAINTED LINES / NO PARKING

---

REV	REVISION DESCRIPTION	DATE
8	ISSUED FOR MINOR VARIANCE	21/FEB/2023
7	ISSUED FOR TENDER	15/FEB/2023
6	ISSUED FOR SITE PLAN CONTROL REV 1	9/FEB/2023
5	ISSUED FOR 99% CLIENT REVIEW	6/FEB/2023
4	ISSUED FOR BUILDING PERMIT	14/OCT/2022
3	ISSUED FOR SITE PLAN CONTROL	7/OCT/2022
2	ISSUED FOR 85% DRAWINGS & COST ESTIMATE	23/SEPT/2022
1	ISSUED FOR CLIENT REVIEW	25/AUG/2022

---

THIS DRAWING IS THE EXCLUSIVE PROPERTY OF PYE & RICHARDS - TEMPRANO & YOUNG ARCHITECTS INC. COPYRIGHT RESERVED

CONTRACTOR TO VERIFY ALL DIMENSIONS AND NOTIFY THE ARCHITECT OF ANY DIMENSIONAL ERRORS AND/OR POSSIBLE TRADE INTERFERENCE PRIOR TO COMMENCEMENT OF THE WORK. DO NOT SCALE DRAWINGS.

Not for construction unless SEALED and SIGNED

PROJECT NORTH

---

**P R PYE & RICHARDS - TEMPRANO & YOUNG ARCHITECTS INC.**

824 Meath St. Suite 200 Ottawa, ON K1Z 6E8 613.724.7700 info@prty.ca

---

**PROJECT**

OCDSB FINDLAY CREEK ELEMENTARY SCHOOL

4140 Kelly Farm Dr. OTTAWA, ONTARIO

---

**DRAWING**

SITE PLAN ZONING MATRIX

---

PROJECT NO.	22012	DRAWING NO.	
SCALE -	AS NOTED		
DRAWN -	I.R.		<b>A100</b>
CHECKED -	I.R.		
PLOT DATE -	16/02/2023	PLOTTED BY:	

1 SITE PLAN SCALE: 1:400

BLOCK 121 4M-1321

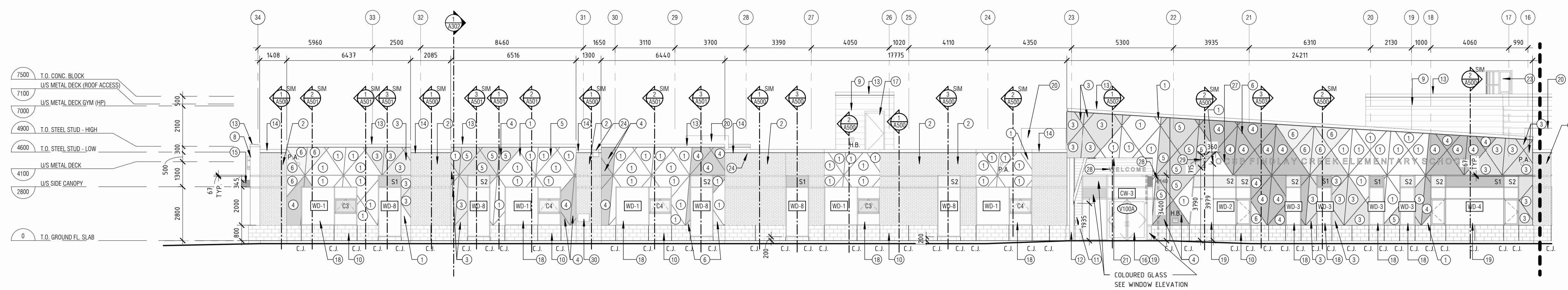


OTTAWA CATHOLIC SCHOOL BOARD

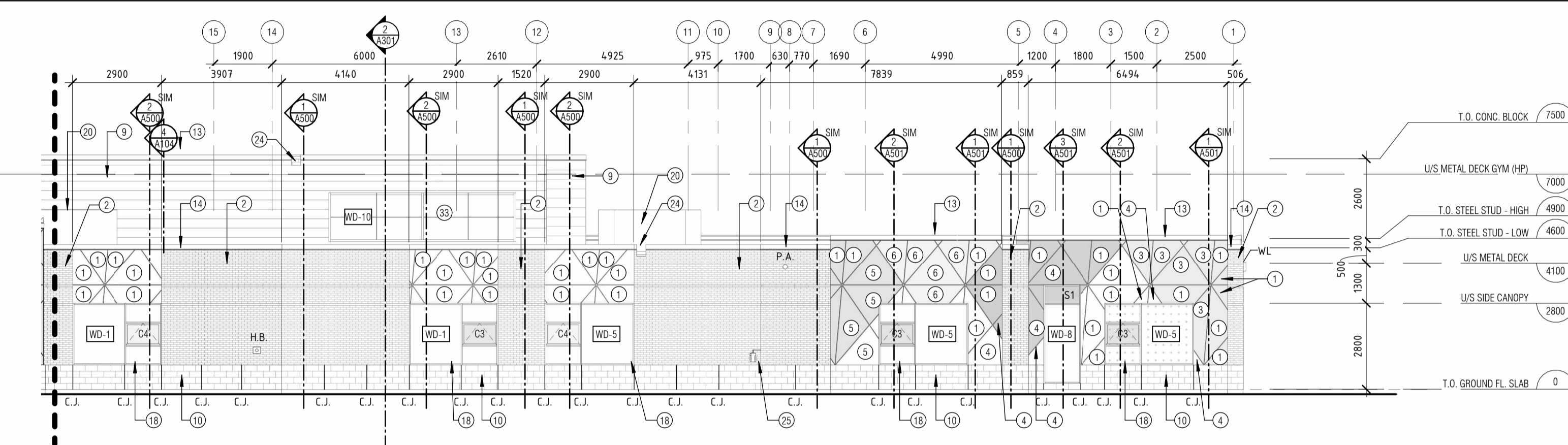
570 WEST HUNT CLUB, NEPEAN, ON. (613)-224-4455

ELEVATION NOTES

- 1 HIGH PRESSURE LAMINATE - FINISH 1 (OFF-WHITE)
- 2 GREY BRICK - FINISH 2
- 3 HIGH PRESSURE LAMINATE - FINISH 3 (ORANGE)
- 4 HIGH PRESSURE LAMINATE - FINISH 4 (GREY)
- 5 HIGH PRESSURE LAMINATE - FINISH 5 (RED)
- 6 HIGH PRESSURE LAMINATE - FINISH 5 (YELLOW)
- 7 RESERVE
- 8 SIGNAGE (CASH ALLOWANCE)
- 9 PRE-FINISHED HORIZONTAL METAL CLADDING - FINISH 9
- 10 CONCRETE BLOCK - FINISH 10
- 11 ALUMINUM HORIZONTAL CLADDING - FINISH 11 (WOOD TEXTURE)
- 12 GALVANIZED STEEL COLUMN - FINISH 12
- 13 PRE-FINISHED METAL FLASHING - FINISH 13 (TO MATCH WHITE LAMINATE PANEL)
- 14 PRE-FINISHED METAL FLASHING - FINISH 14 (TO MATCH GREY BRICK)
- 15 HIGH PRESSURE LAMINATE - FINISH 15 (WHITE)
- 16 ALUMINUM ENTRANCE FRAMING
- 17 PRESSED STEEL FRAME (PAINTED) & HOLLOW METAL DOOR
- 18 ALUMINUM WINDOW FRAMING
- 19 ALUMINUM CURTAIN WALL FRAMING
- 20 ROOF TOP UNIT - SEE MECH
- 21 ALUMINUM SOFFIT (WOOD TEXTURE)
- 22 RESERVE
- 23 ROOF ACCESS LADDER CW CAGE
- 24 SCUPPER (PRE-FINISHED METAL)
- 25 GAS METER - SEE MECHANICAL
- 26 AIR INTAKE WALL BOX - SEE MECHANICAL
- 27 300mm HT. CLEAR ANODIZED LETTERING - SEE CASH ALLOWANCE
- 28 200mm HT. CLEAR ANODIZED LETTERING - SEE CASH ALLOWANCE
- 29 BACK LIT CROSS - SEE ELECTRICAL
- 30 ENCLOSURE FOR TEMPORARY GENERATOR OUTLET - SEE ELECTRICAL
- 31 LINE UP & SPACE EQUAL ALPHONE, CARD READER & AUTO DOOR OPERATOR @ 1900mm HT.
- 32 400x400 STORM PROOF LOUVER - SEE MECH. COLOUR TO MATCH SIDING.
- 33 ALUMINUM FRAMING WITH TRANSLUCENT GLAZING PANEL



1A NORTH ELEVATION-PART A  
A201 1:125



1B NORTH ELEVATION-PART B  
A201 1:125

- ELEVATION LEGEND**
- WL WALL MOUNT LIGHT FIXTURE @ 3800mm
  - 25mm LAMINATE PANEL REVEAL (TYP.)
  - 67mm CONTINUOUS RECESSED BRICK BAND
  - S1 SPANDREL PANEL - COLOUR 1
  - S2 SPANDREL PANEL - COLOUR 2
  - C.J. CONTROL JOINT  
-MAX. 6.1m @ BRICK  
-MAX 1.6m @ ARCH. BLOCK
  - P.A. P.A. HORN - SEE ELECT.  
MOUNT @ 4000mm
  - H.B. HOSE BIB CONNECTION - SEE MECHANICAL
  - A. AUTO OPERATOR - MOUNTED 1000mm AFF
  - C.R. CARD READER - MOUNTED 1050mm AFF
  - A.P.H. AI PHONE - MOUNTED 1050mm AFF
  - BIRD SAFE GLASS

REV	REVISION DESCRIPTION	DATE
7	ISSUED FOR MINOR VARIANCE	FEB/21/2023
6	ISSUED FOR TENDER	FEB/15/2023
5	ISSUED FOR SITE PLAN CONTROL REV 1	JAN/05/2023
4	ISSUED FOR PERMIT	DEC/14/2022
3	ISSUED FOR SITE PLAN CONTROL	OCT/07/2022
2	ISSUED FOR 85% DRAWINGS & SPECS FOR COST ESTIMATE	SEP/23/2022
1	ISSUED FOR 80% REVIEW/CLASS A COST ESTIMATE	AUG/25/2022

THIS DRAWING IS THE EXCLUSIVE PROPERTY OF PYE & RICHARDS - TEMPRANO & YOUNG ARCHITECTS INC. COPYRIGHT RESERVED

CONTRACTOR TO VERIFY ALL DIMENSIONS AND NOTIFY THE ARCHITECT OF ANY DIMENSIONAL ERRORS AND/OR POSSIBLE TRADE INTERFERENCE/CONFLICT FOR CLARIFICATION PRIOR TO COMMENCEMENT OF THE WORK. DO NOT SCALE DRAWINGS.

SEAL PROJECT NORTH

Not for construction unless SEALED and SIGNED

**P R** PYE & RICHARDS -  
**T Y** TEMPRANO & YOUNG  
ARCHITECTS INC.

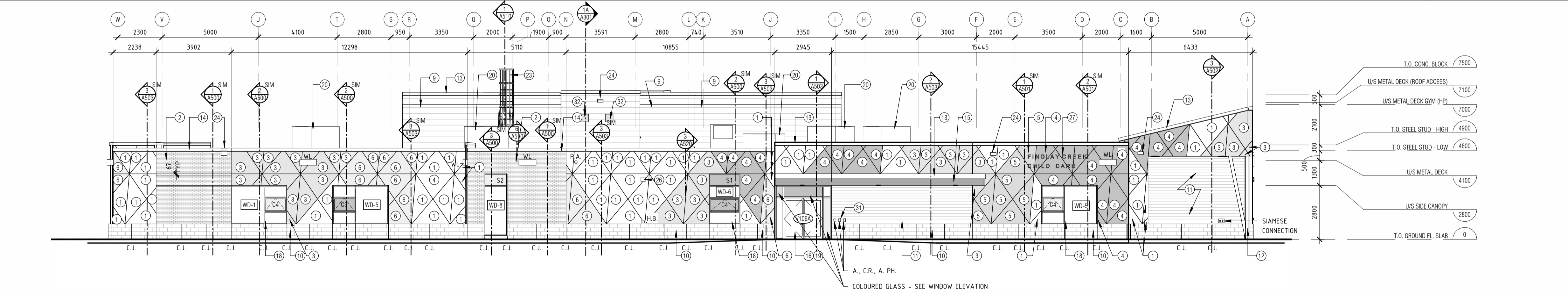
824 Meath St. Suite 200 613. 724. 7700  
Ottawa, ON K1Z 6E8 info@prty.ca

PROJECT  
OCSB FINDLAY CREEK CATHOLIC  
ELEMENTARY SCHOOL

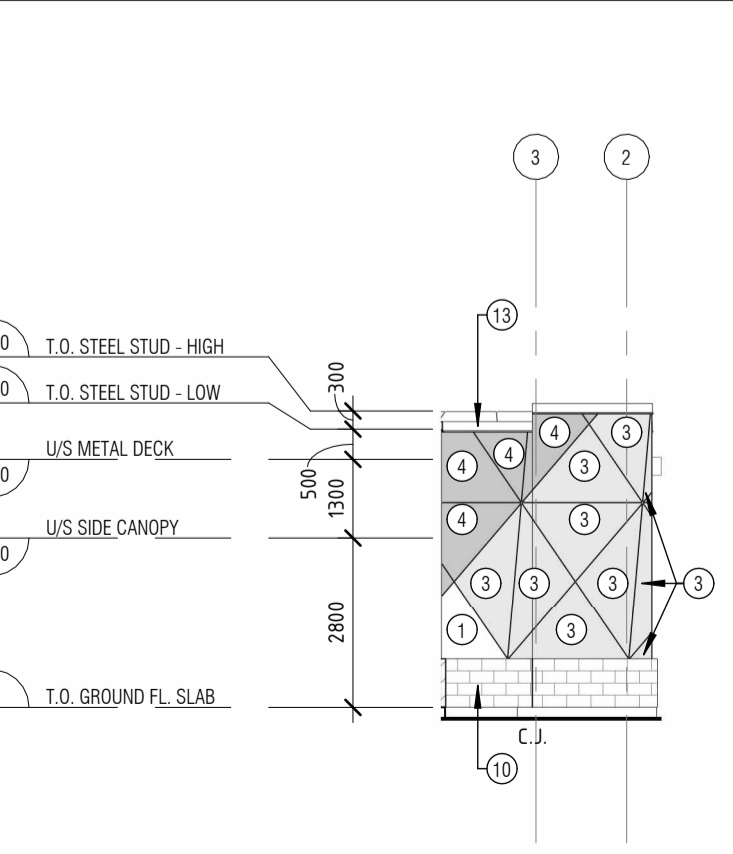
4140 KELLY FARM DRIVE OTTAWA, ONTARIO

DRAWING  
BUILDING ELEVATIONS

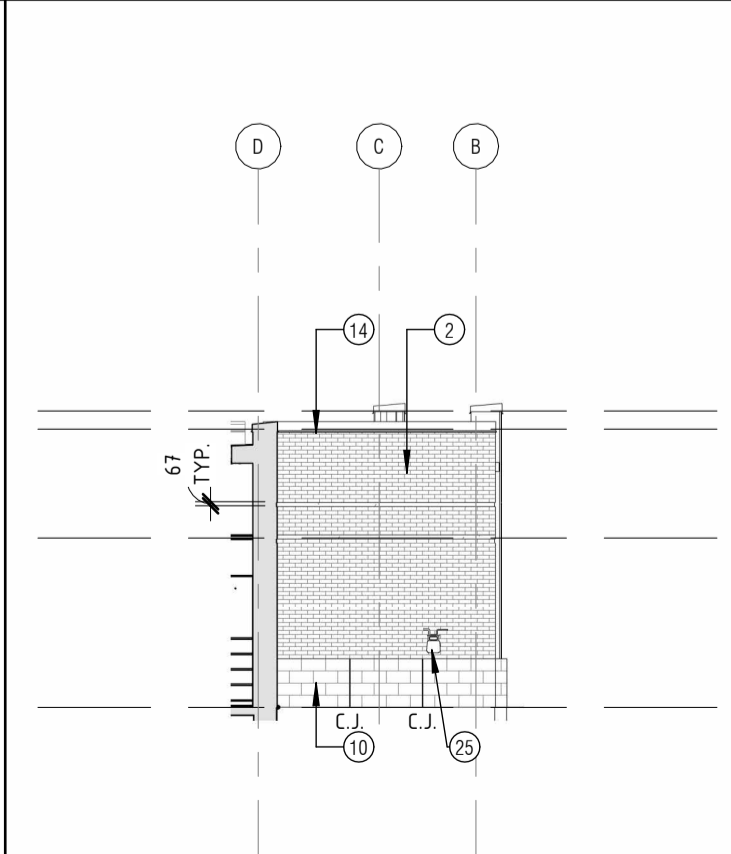
PROJECT NO.	22012	DRAWING NO.	A201
SCALE -	AS NOTED		
DRAWN -	YC, DL		
CHECKED -	IR		
PLOT DATE -	FEB 21 2023	PLOTTED BY -	



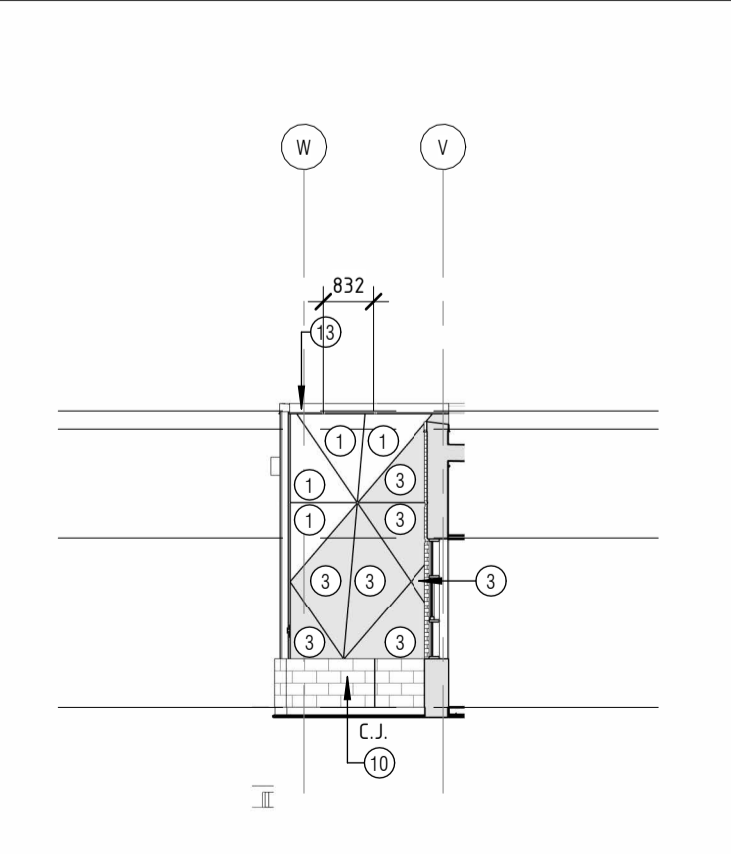
2 EAST ELEVATION  
A201 1:125



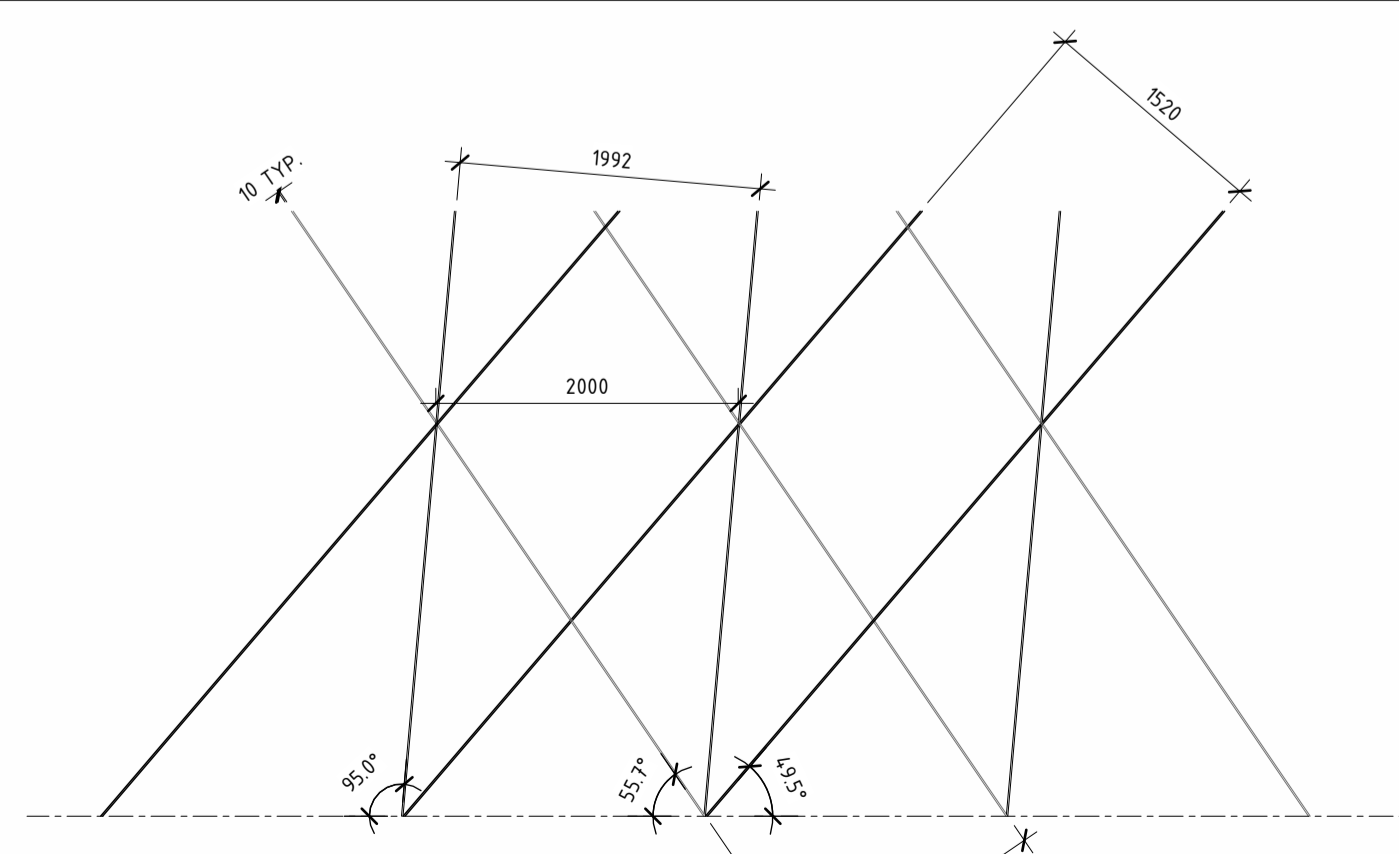
3 PARTIAL NORTH ELEVATION 1  
A201 1:125



4 PARTIAL EAST ELEVATION 1  
A201 1:125



5 PARTIAL EAST ELEVATION 2  
A201 1:125



6 TYPICAL PANEL PATTERN  
A201 1:50

Committee of Adjustment  
Received | Reçu le  
2023-02-27  
City of Ottawa | Ville d'Ottawa  
Comité de dérogation

PLOT SCALE - 1:1

SHEET SIZE: A1

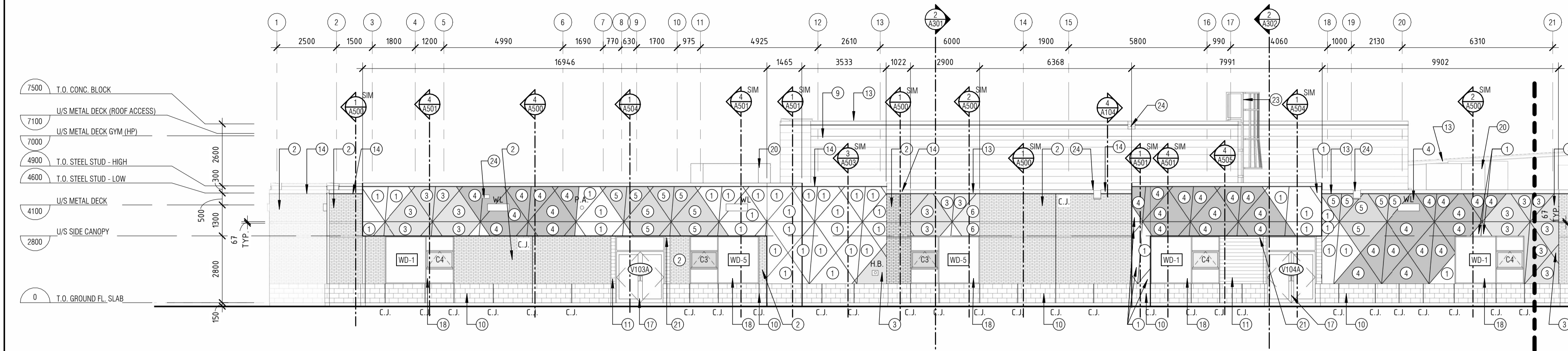


OTTAWA CATHOLIC SCHOOL BOARD

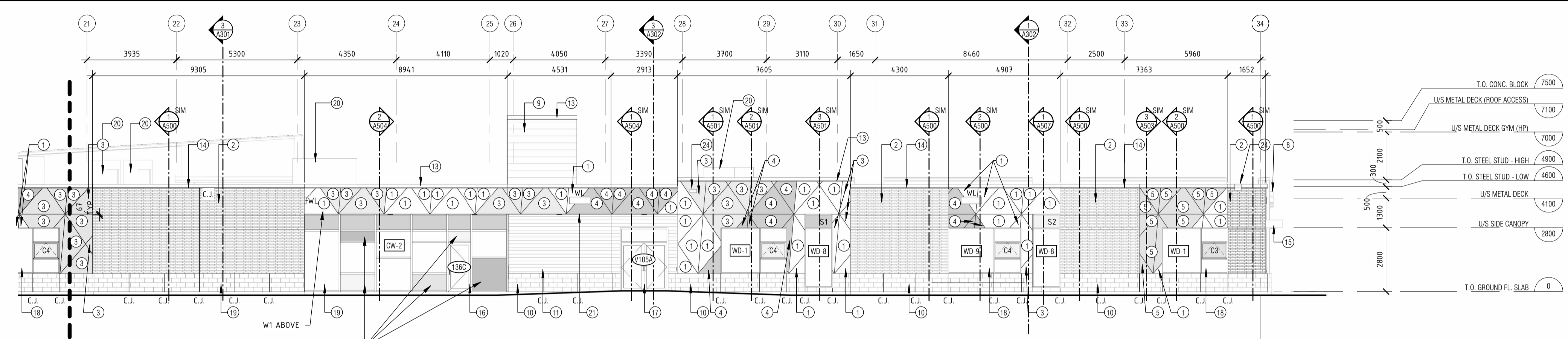
570 WEST HUNT CLUB, NEPEAN, ON. (613)-224-4455

ELEVATION NOTES

- 1 HIGH PRESSURE LAMINATE - FINISH 1 (OFF-WHITE)
- 2 GREY BRICK - FINISH 2
- 3 HIGH PRESSURE LAMINATE - FINISH 3 (ORANGE)
- 4 HIGH PRESSURE LAMINATE - FINISH 4 (GREY)
- 5 HIGH PRESSURE LAMINATE - FINISH 5 (RED)
- 6 HIGH PRESSURE LAMINATE - FINISH 6 (YELLOW)
- 7 RESERVE
- 8 SIGNAGE (CASH ALLOWANCE)
- 9 PRE-FINISHED HORIZONTAL METAL CLADDING - FINISH 9
- 10 CONCRETE BLOCK - FINISH 10
- 11 ALUMINUM HORIZONTAL CLADDING - FINISH 11 (WOOD TEXTURE)
- 12 GALVANIZED STEEL COLUMN - FINISH 12
- 13 PRE-FINISHED METAL FLASHING - FINISH 13 (TO MATCH WHITE LAMINATE PANEL)
- 14 PRE-FINISHED METAL FLASHING - FINISH 14 (TO MATCH GREY BRICK)
- 15 HIGH PRESSURE LAMINATE - FINISH 15 (WHITE)
- 16 ALUMINUM ENTRANCE FRAMING
- 17 PRESSED STEEL FRAME (PAINTED) & HOLLOW METAL DOOR
- 18 ALUMINUM WINDOW FRAMING
- 19 ALUMINUM CURTAIN WALL FRAMING
- 20 ROOF TOP UNIT - SEE MECH
- 21 ALUMINUM SOFFIT (WOOD TEXTURE)
- 22 RESERVE
- 23 ROOF ACCESS LADDER CW CAGE
- 24 SCULPER (PRE-FINISHED METAL)
- 25 GAS METER - SEE MECHANICAL
- 26 AIR INTAKE WALL BOX - SEE MECHANICAL
- 27 300mm HT. CLEAR ANODIZED LETTERING - SEE CASH ALLOWANCE
- 28 200mm HT. CLEAR ANODIZED LETTERING - SEE CASH ALLOWANCE
- 29 BACK LIT CROSS - SEE ELECTRICAL
- 30 ENCLOSURE FOR TEMPORARY GENERATOR OUTLET - SEE ELECTRICAL SPRAY FOAM & CAULK @ PENETRATION
- 31 LINE UP & SPACE EQUAL ALPHONE, CARD READER & AUTO DOOR OPERATOR @ 1000mm HT.
- 32 400x400 STORM PROOF LOUVER - SEE MECH. COLOUR TO MATCH SIDING.
- 33 ALUMINUM FRAMING WITH TRANSPARENT GLAZING PANEL.



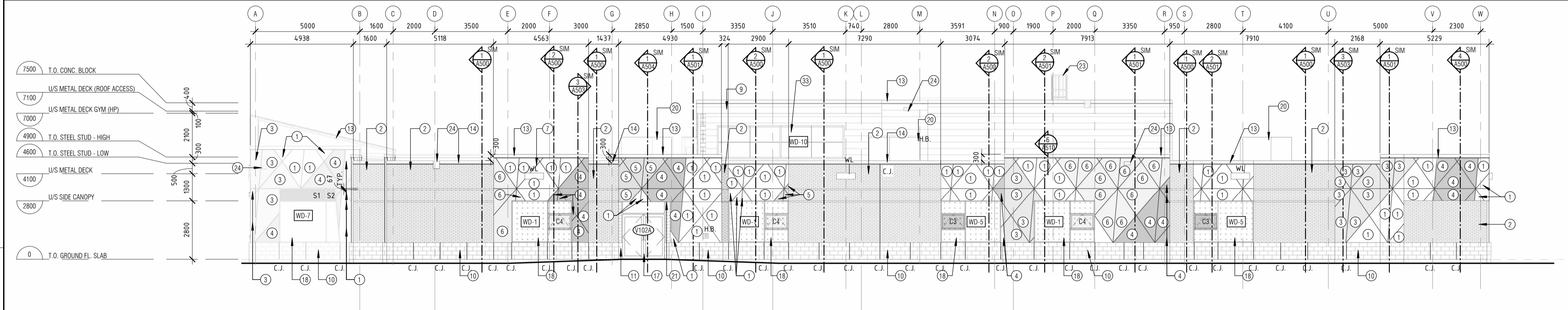
1A SOUTH ELEVATION-PART A  
A202 1:125



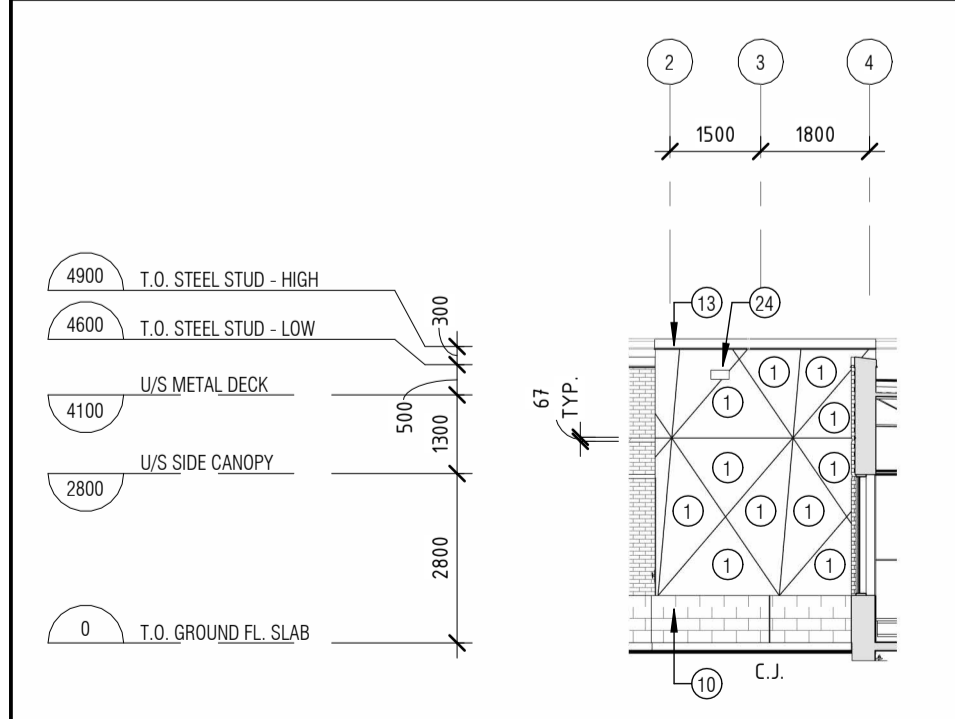
- ELEVATION LEGEND**
- W.L. WALL MOUNT LIGHT FIXTURE @ 3800mm
  - 25mm LAMINATE PANEL REVEAL (TYP.)
  - 67mm CONTINUOUS RECESSED BRICK BAND
  - T.O. CONC. BLOCK (7500)
  - U/S METAL DECK (ROOF ACCESS) (7100)
  - U/S METAL DECK GYM (HP) (7000)
  - T.O. STEEL STUD - HIGH (4900)
  - T.O. STEEL STUD - LOW (4600)
  - U/S METAL DECK (4100)
  - U/S SIDE CANOPY (2800)
  - T.O. GROUND FL. SLAB (0)
- W1 ABOVE  
COLOURED GLASS  
SEE WINDOW ELEVATIONS

1B SOUTH ELEVATION-PART B  
A202 1:125

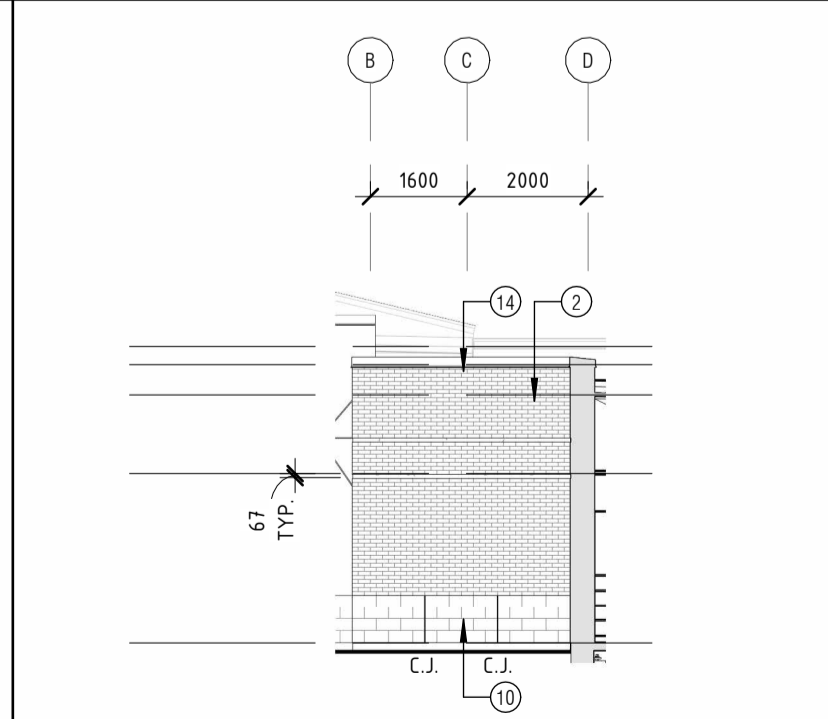
PLOT SCALE - 1:1



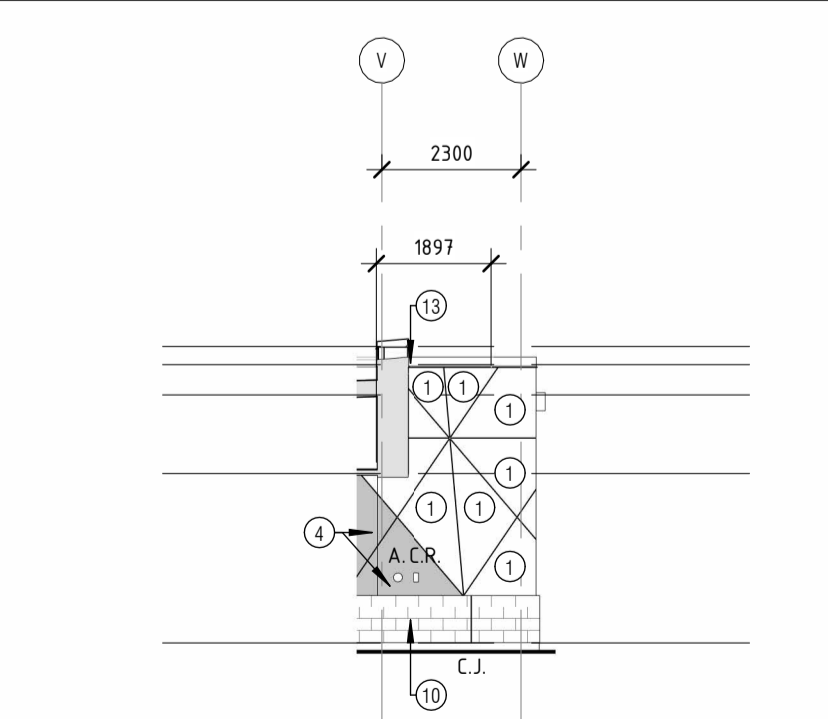
2 WEST ELEVATION  
A202 1:125



3 PARTIAL SOUTH ELEVATION 1  
A202 1:125



1 PARTIAL WEST ELEVATION 1  
A202 1:125



4 PARTIAL WEST ELEVATION 2  
A202 1:125

REV	REVISION DESCRIPTION	DATE
7	ISSUED FOR MINOR VARIANCE	FEB/21/2023
6	ISSUED FOR TENDER	FEB/15/2023
5	ISSUED FOR SITE PLAN CONTROL REV 1	JAN/05/2023
4	ISSUED FOR PERMIT	DEC/14/2022
4	ISSUED FOR SITE PLAN CONTROL	OCT/07/2022
3	ISSUED FOR 85% REVIEW/CLASS A COST ESTIMATE	SEP/23/2022
2	ISSUED FOR 80% REVIEW/CLASS A COST ESTIMATE	AUG/25/2022

THIS DRAWING IS THE EXCLUSIVE PROPERTY OF PYE & RICHARDS - TEMPRANO & YOUNG ARCHITECTS INC. COPYRIGHT RESERVED

CONTRACTOR TO VERIFY ALL DIMENSIONS AND NOTIFY THE ARCHITECT OF ANY DIMENSIONAL ERRORS AND/OR POSSIBLE TRADE INTERFERENCE/CONFLICT FOR CLARIFICATION PRIOR TO COMMENCEMENT OF THE WORK. DO NOT SCALE DRAWINGS.

**SEAL**

**PROJECT NORTH**

Not for construction unless SEALED and SIGNED

**P R** PYE & RICHARDS -  
**T Y** TEMPRANO & YOUNG  
ARCHITECTS INC.

824 Meath St. Suite 200 613. 724. 7700  
Ottawa, ON K1Z 6E8 info@prty.ca

**PROJECT**  
OCSB FINDLAY CREEK CATHOLIC  
ELEMENTARY SCHOOL

4140 KELLY FARM DRIVE OTTAWA, ONTARIO

**DRAWING**  
BUILDING ELEVATIONS

PROJECT NO.	22012	DRAWING NO.	A202
SCALE	AS NOTED	CHECKED	IR
DRAWN	YC, DL	PLOT DATE	FEB 21 2023
PLOT DATE	FEB 21 2023	PLOTTED BY	