

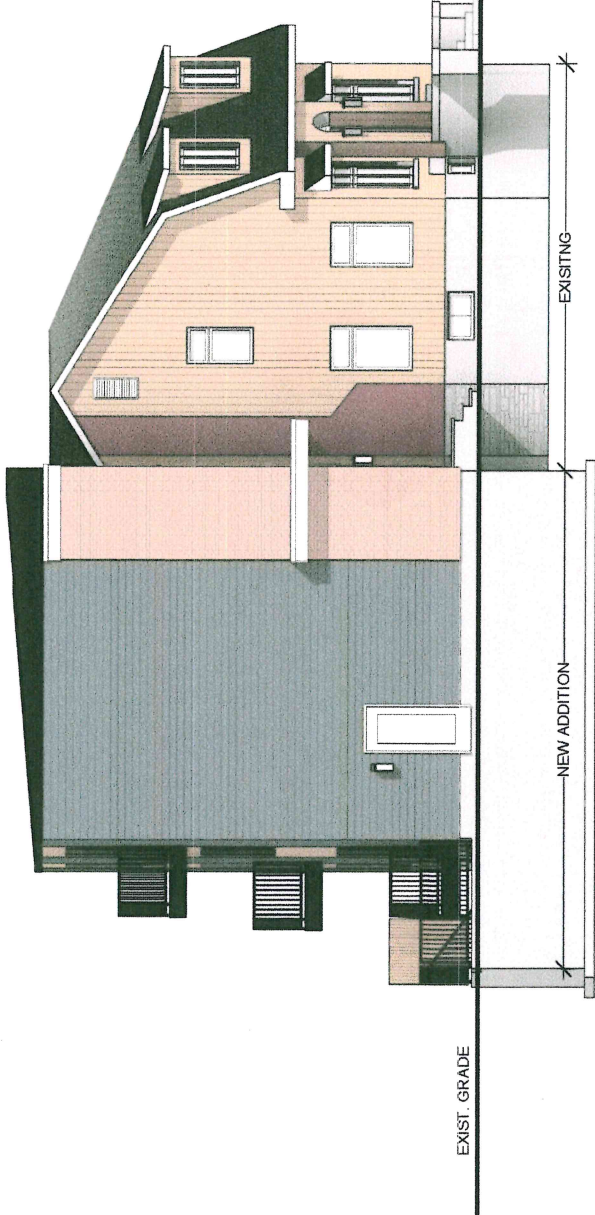
Committee of Adjustment  
 JUN 17 2022  
 City of Ottawa  
 U.S. SECOND CEILING  
 17' - 9 1/2"

- ADDITION T.O. 3RD PLATE  
25' - 8 3/4"
- ADDITION T.O. 3RD SUBFLOOR  
17' - 7 5/8"
- ADDITION T.O. 2ND PLATE  
16' - 7"
- ADDITION T.O. 2ND SUBFLOOR  
8' - 5 7/8"
- ADDITION T.O. GRD PLATE  
7' - 5 1/4"
- ADDITION T.O. GRD SUBFLOOR  
-7 7/8"
- ADDITION T.O. FOUNDATION  
-1' - 10"
- ADDITION T.O. BASEMENT SLAB  
-9' - 10"
- ADDITION B.O. FOUNDATION  
-10' - 4"

- T.O. SECOND FLOOR  
10' - 1"
- U.S. GROUND CEILING  
9' - 1"
- T.O. GROUND FLOOR  
0"
- U.S. GROUND JOISTS  
-9"
- EXIST. GRADE
- LOWER T.O. BASEMENT  
-7' - 3"

1 NORTH ELEVATION  
 1/8" = 1'-0"

2 EAST ELEVATION  
 1/8" = 1'-0"



EXIST. GRADE

NEW ADDITION

EXISTING

All drawings, specifications, related documents and design are copyright property of the designer and shall not be used in whole or part without written permission of the designer.



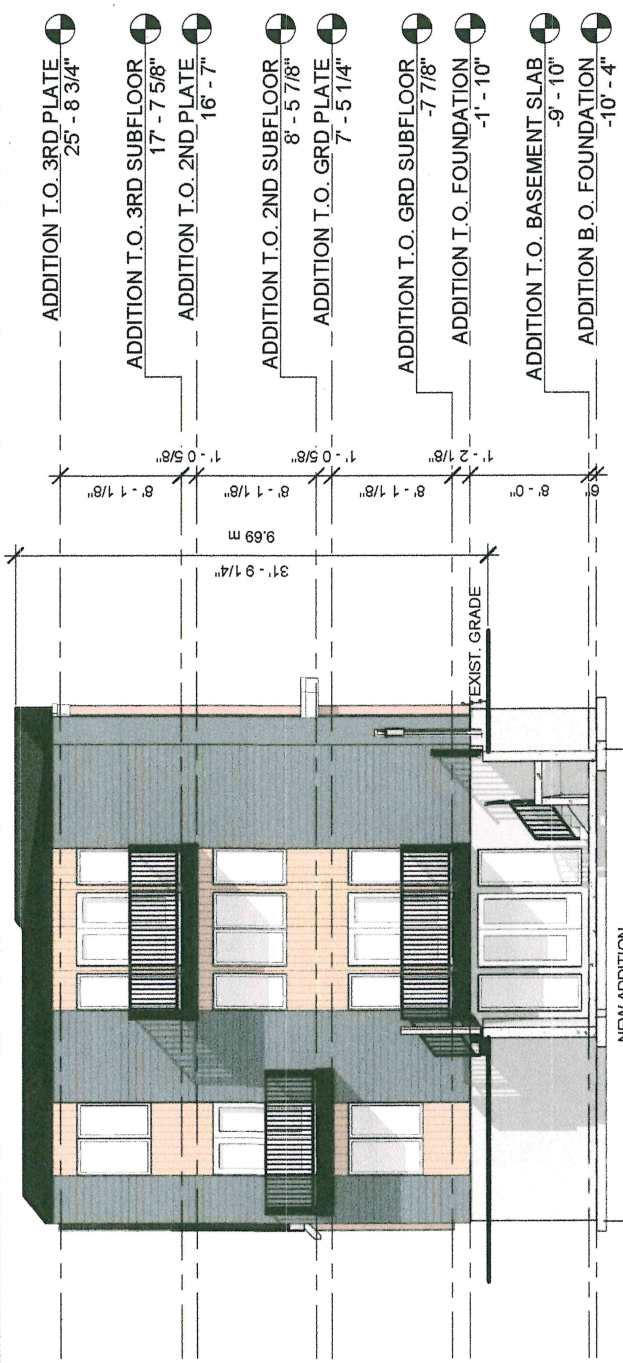
Committee of Adjustment  
 JUN 17 2022  
 City of Ottawa

MULTI-UNIT  
 CONVERSION  
 184 MERIER AVENUE  
 VANIER, ON, K1L 6S9

PROJECT NAME: \_\_\_\_\_  
 DATE: 02/22/22  
 DESIGNED/DRAWN: BL & PV

SCALE: 1/8" = 1'-0"  
 DRAWING NO.: ELEVATIONS

A-3.1



ADDITION T.O. 3RD PLATE  
 25' - 8 3/4"

ADDITION T.O. 3RD SUBFLOOR  
 17' - 7 5/8"

ADDITION T.O. 2ND PLATE  
 16' - 7"

ADDITION T.O. 2ND SUBFLOOR  
 8' - 5 7/8"

ADDITION T.O. GRD PLATE  
 7' - 5 1/4"

ADDITION T.O. GRD SUBFLOOR  
 -7' 7/8"

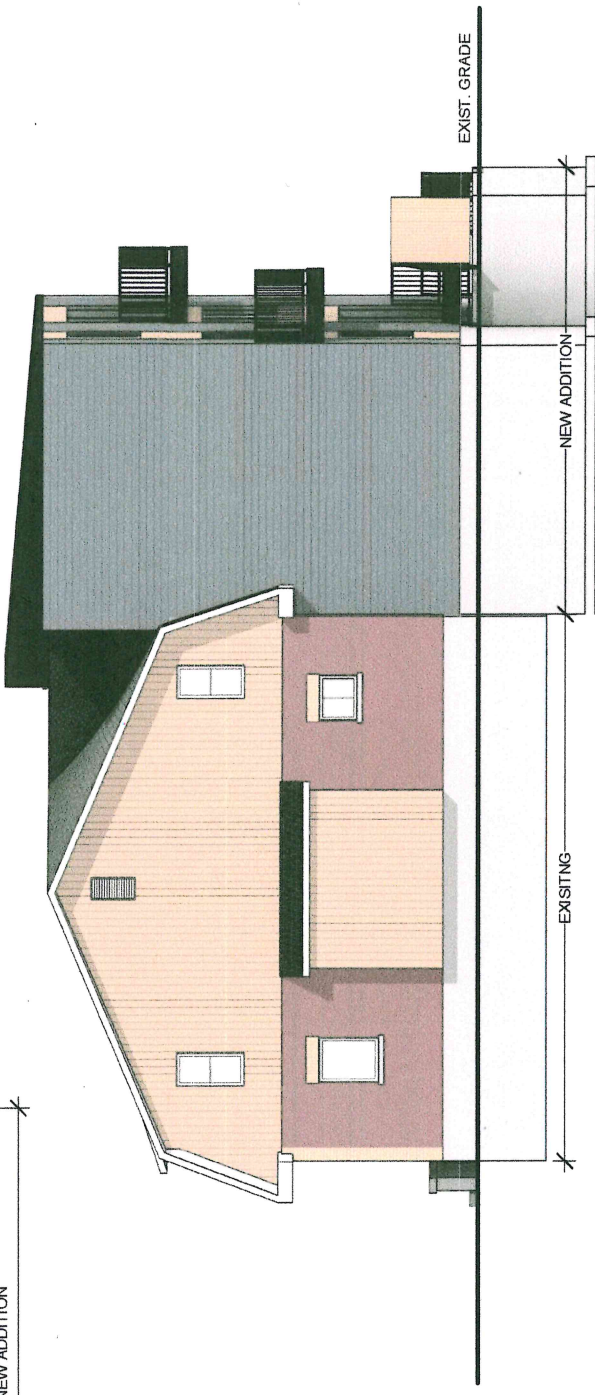
ADDITION I.O. FOUNDATION  
 -1' - 10"

ADDITION T.O. BASEMENT SLAB  
 -9' - 10"

ADDITION B.O. FOUNDATION  
 -10' - 4"

1 SOUTH ELEVATION  
 1/8" = 1'-0"

2 WEST ELEVATION  
 1/8" = 1'-0"



1 SOUTH ELEVATION  
 1/8" = 1'-0"

2 WEST ELEVATION  
 1/8" = 1'-0"

All drawings, specifications, related documents and designs are copyright property of the designer and not to be used in whole or part without written permission of the designer.