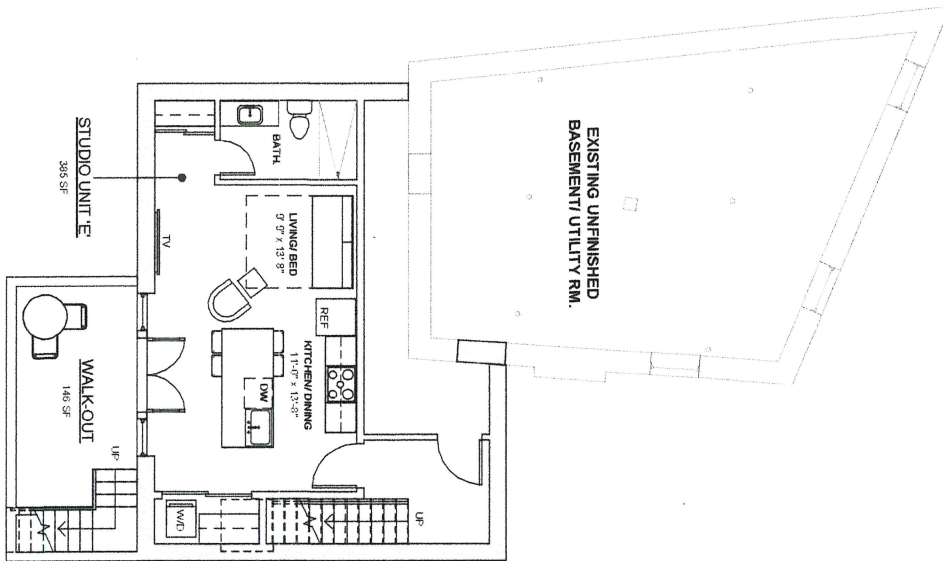
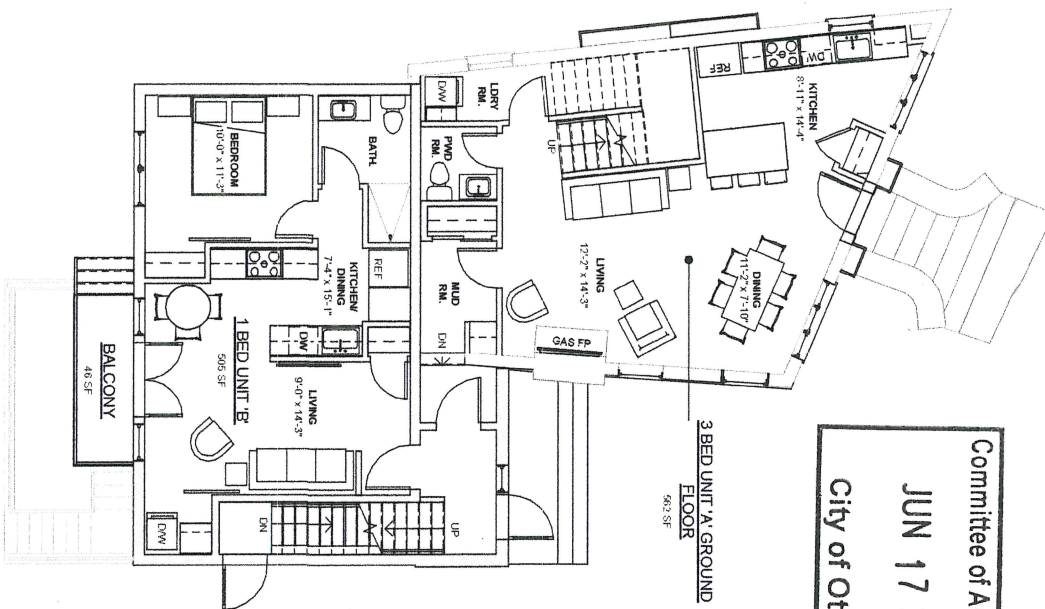


1 BASEMENT PLAN
1/8" = 1'-0"



2 GROUND FLOOR PLAN
1/8" = 1'-0"



Committee of Adjustment
JUN 17 2022
City of Ottawa

DWG NO:

A-2.0

DRAWING FLOOR PLANS

SCALE: 1/8" = 1'-0"

DATE: 02/22/22

DESIGNED/DRAWN: BL & PV

ISSUED/REVISED:

PROJECT NAME:

MULTI-UNIT
CONVERSION

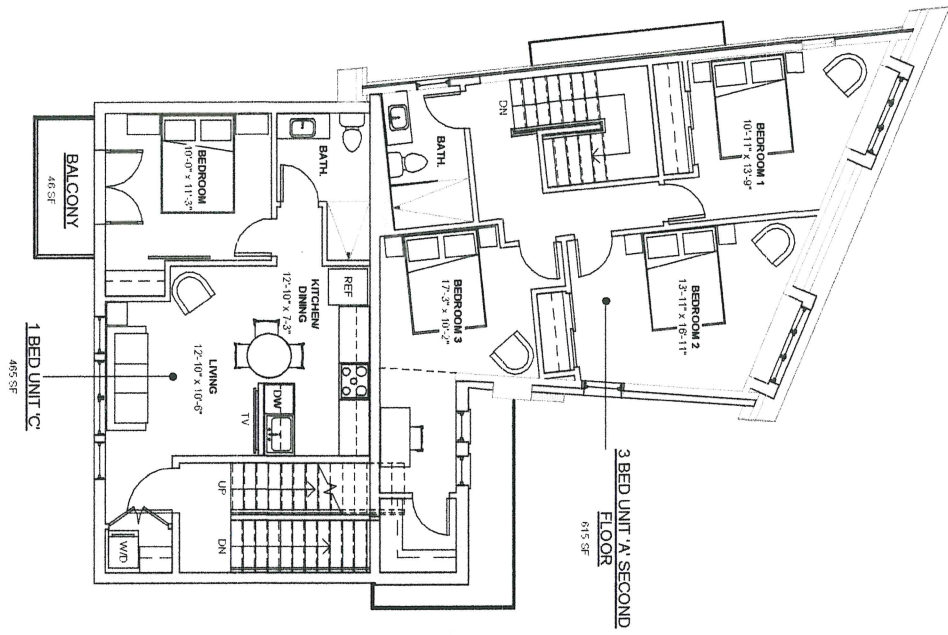
184 MERIER AVENUE
VANIER, ON. K1L 5S9

DesignValley
Homes where living happens.

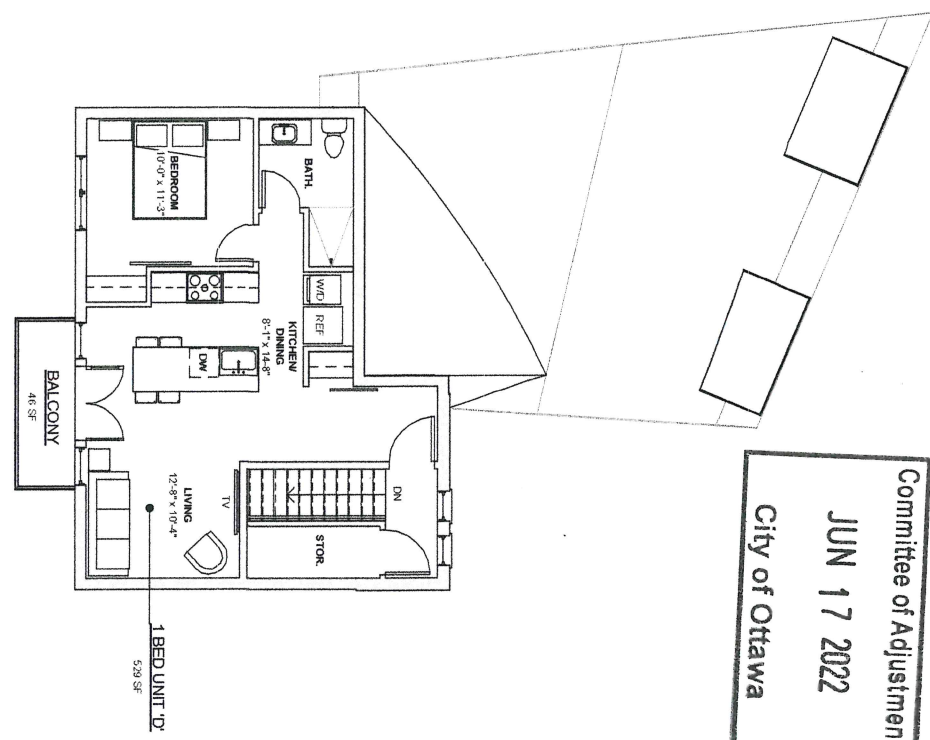


email: info@designvalley.ca
phone: 513-864-3115

1 SECOND FLOOR PLAN
1/8" = 1'-0"



2 THIRD FLOOR PLAN
1/8" = 1'-0"



Committee of Adjustment
JUN 17 2022
City of Ottawa

<p>DWG NO:</p> <h1>A-2.1</h1>	<p>DRAWING: FLOOR PLANS</p>	<p>ISSUED/REVISED:</p>	<p>PROJECT NAME:</p> <p>MULTI-UNIT CONVERSION</p> <p>184 MERIER AVENUE VANIER, ON. K1L 6S9</p>
	<p>SCALE: 1/8" = 1'-0"</p>	<p>DESIGNED/DRAWN: BL & PV</p>	
	<p>DATE: 02/22/22</p>		



All drawings, specifications, related documents and design are copyright property of the designer and not to be used in whole or part without written permission of the designer.

Committee of Adjustment

JUN 17 2022

City of Ottawa

U.S. SECOND CEILING
17' - 9 1/2"



● ADDITION T.O. 3RD PLATE
25' - 8 3/4"

● ADDITION T.O. 3RD SUBFLOOR
17' - 7 5/8"

● ADDITION T.O. 2ND PLATE
16' - 7"

● ADDITION T.O. 2ND SUBFLOOR
8' - 5 7/8"

● ADDITION T.O. GRD PLATE
7' - 5 1/4"

● ADDITION T.O. GRD SUBFLOOR
-7 7/8"

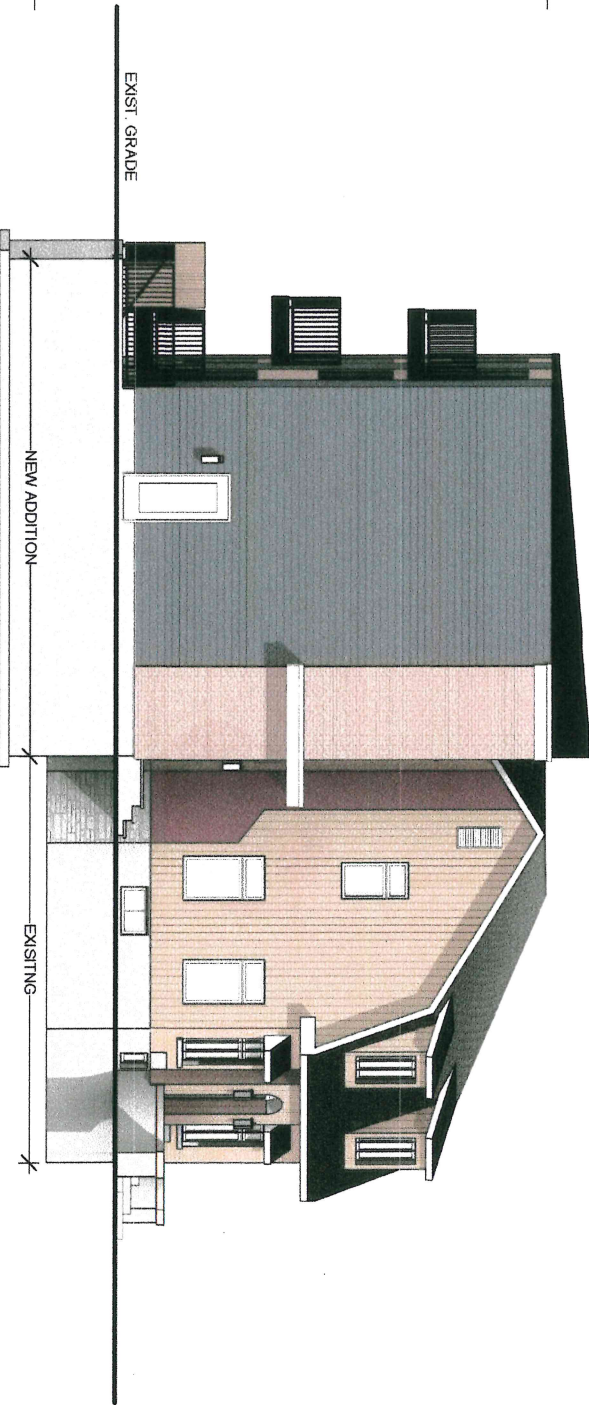
● ADDITION T.O. FOUNDATION
-1' - 10"

● ADDITION T.O. BASEMENT SLAB
-9' - 10"

● ADDITION B.O. FOUNDATION
-10' - 4"

1 NORTH ELEVATION
1/8" = 1'-0"

2 EAST ELEVATION
1/8" = 1'-0"



City of Ottawa
U.S. SECOND CEILING
17' - 9 1/2"

● T.O. SECOND FLOOR
10' - 1"

● U.S. GROUND CEILING
9' - 1"

● T.O. GROUND FLOOR
0"

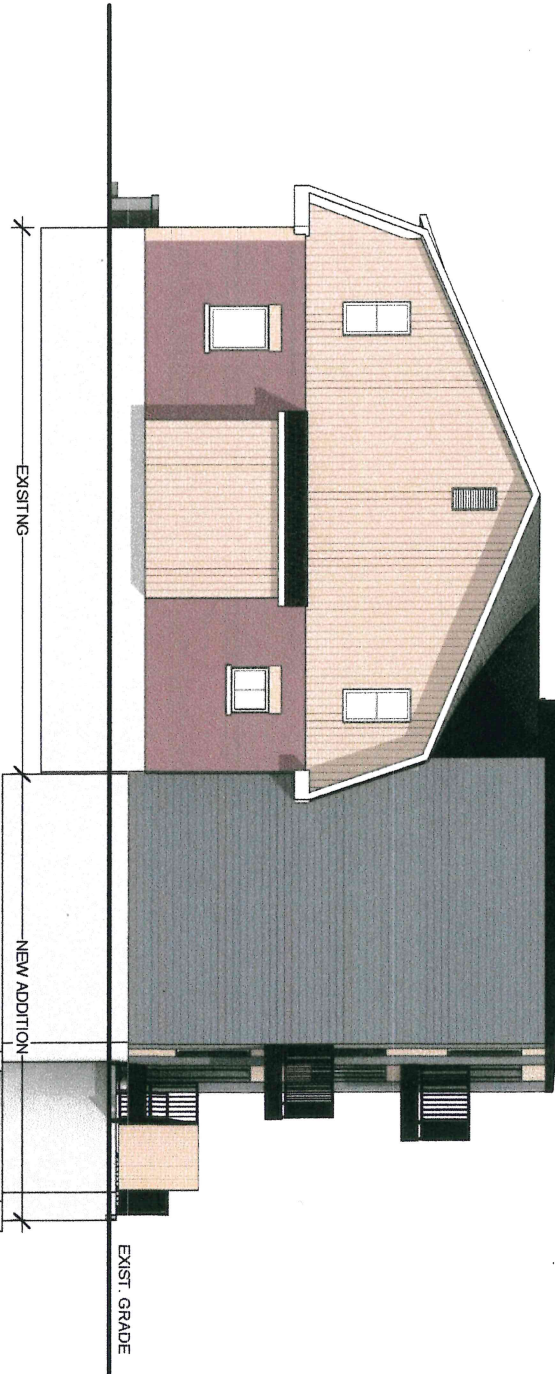
● U.S. GROUND JOISTS
9"

EXIST. GRADE

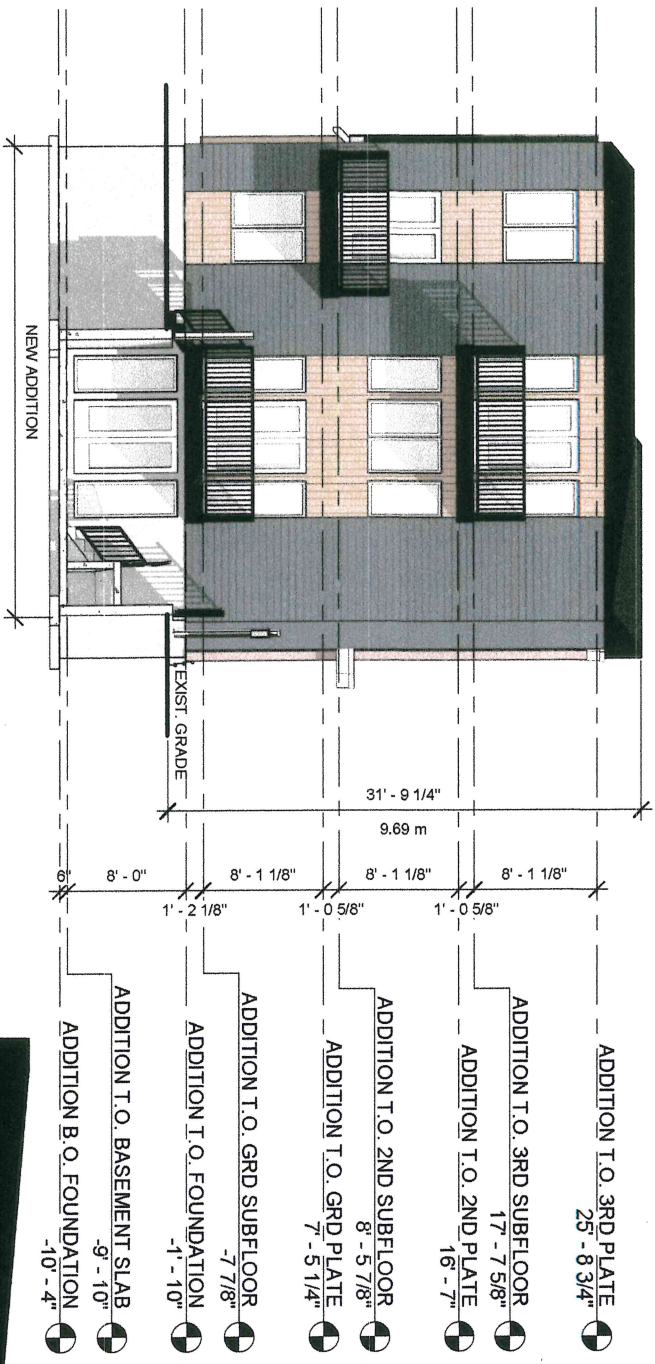
● LOWER T.O. BASEMENT
-7' - 3"

DWG NO: <h1>A-3.0</h1>	DRAWING: ELEVATIONS	ISSUED/REVISED:	PROJECT NAME: MULTI-UNIT CONVERSION 184 MERIER AVENUE VANIER, ON, K1L 5S9	
	SCALE: 1/8" = 1'-0"	DESIGNED/DRAWN: BL & PV		DesignValley Homes where living happens. email: info@designvalley.ca phone: 613-854-3116
	DATE: 02/22/22	COMMITTEE OF ADJUSTMENT		
	ALL DRAWINGS, SPECIFICATIONS, RELATED DOCUMENTS AND DESIGN ARE COPYRIGHT PROPERTY OF THE DESIGNER AND NOT TO BE USED IN WHOLE OR PART WITHOUT THE PERMISSION OF THE DESIGNER.			

2 WEST ELEVATION
1/8" = 1'-0"



1 SOUTH ELEVATION
1/8" = 1'-0"



Committee of Adjustment
JUN 17 2022
City of Ottawa

DWG NO:
A-3.1

DRAWING: ELEVATIONS
SCALE: 1/8" = 1'-0"
DATE: 02/22/22
DESIGNED/DRAWN: BL & PV

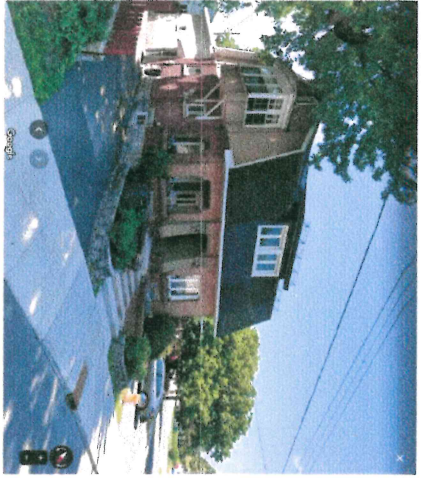
ISSUED/REVISED:

PROJECT NAME:
MULTI-UNIT
CONVERSION
184 MERIER AVENUE
VANIER, ON. K1L 5S9

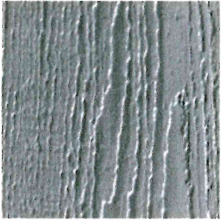
DesignValley
Homes where living happens.
email: info@designvalley.ca
phone: 613-864-3116

All drawings, specifications, related documents and design are copyright property of the designer and not to be used in whole or in part without written permission of the designer.

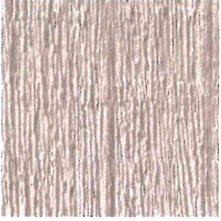
EXISTING:



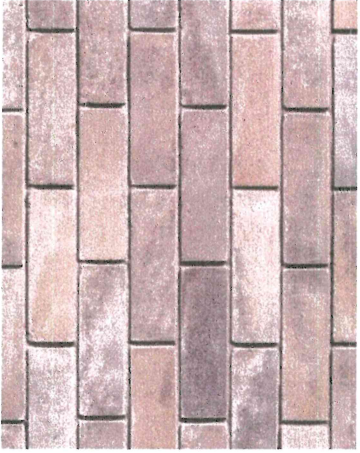
NEW MATERIALS:



Carrara-Granite



Carrara-Sandalwood



Permacon-Beige Margaux

PROPOSED:



184 MERIER AVENUE - MULTI-UNIT CONVERSION ISSUED FOR MINOR VARIANCE APPLICATION

Committee of Adjustment

JUN 17 2022

City of Ottawa

DRAWING LIST

NO.	NAME
A-0.1	3D VIEWS
A-1.0	SITE PLAN
A-2.0	FLOOR PLANS
A-2.1	FLOOR PLANS
A-3.0	ELEVATIONS
A-3.1	ELEVATIONS

DWG NO:

A-0.0

DRAWING: COVERSHEET

SCALE:

DATE: 02/22/22

DESIGNED/DRAWN

BL & PV

ISSUED/REVISED

PROJECT NAME:

MULTI-UNIT
CONVERSION

184 MERIER AVENUE
VANIER, ON. K1L 5S9

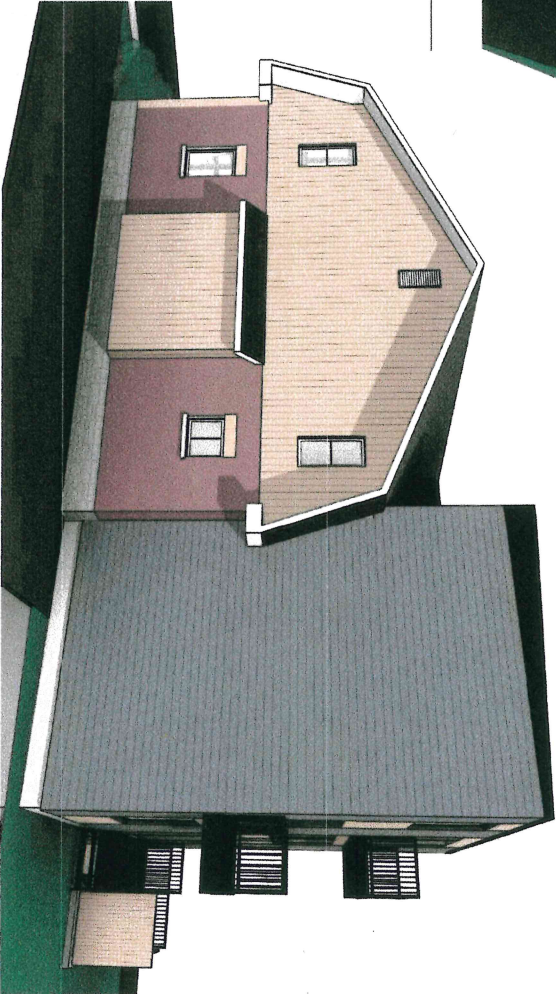
DesignValley
Homes where living happens.



email: info@designvalley.ca
phone: 613-864-3116



1 VIEW FROM SOUTH-EAST CORNER



2 VIEW FROM SOUTH-WEST CORNER

Committee of Adjustment
 JUN 17 2022
 City of Ottawa

DWG NO:
A-0.1

DRAWING: 3D VIEWS
 SCALE:
 DATE: 02/22/22
 DESIGNED/DRAWN: BL & PV

ISSUED/REVISED:

PROJECT NAME
 MULTI-UNIT
 CONVERSION
 184 MERIER AVENUE
 VANIER, ON. K1L 5S9



email: info@designvalley.ca
 phone: 513-864-3116

All drawings, specifications, related documents and design are copyright property of the designer and not to be used in whole or part without written permission of the designer.