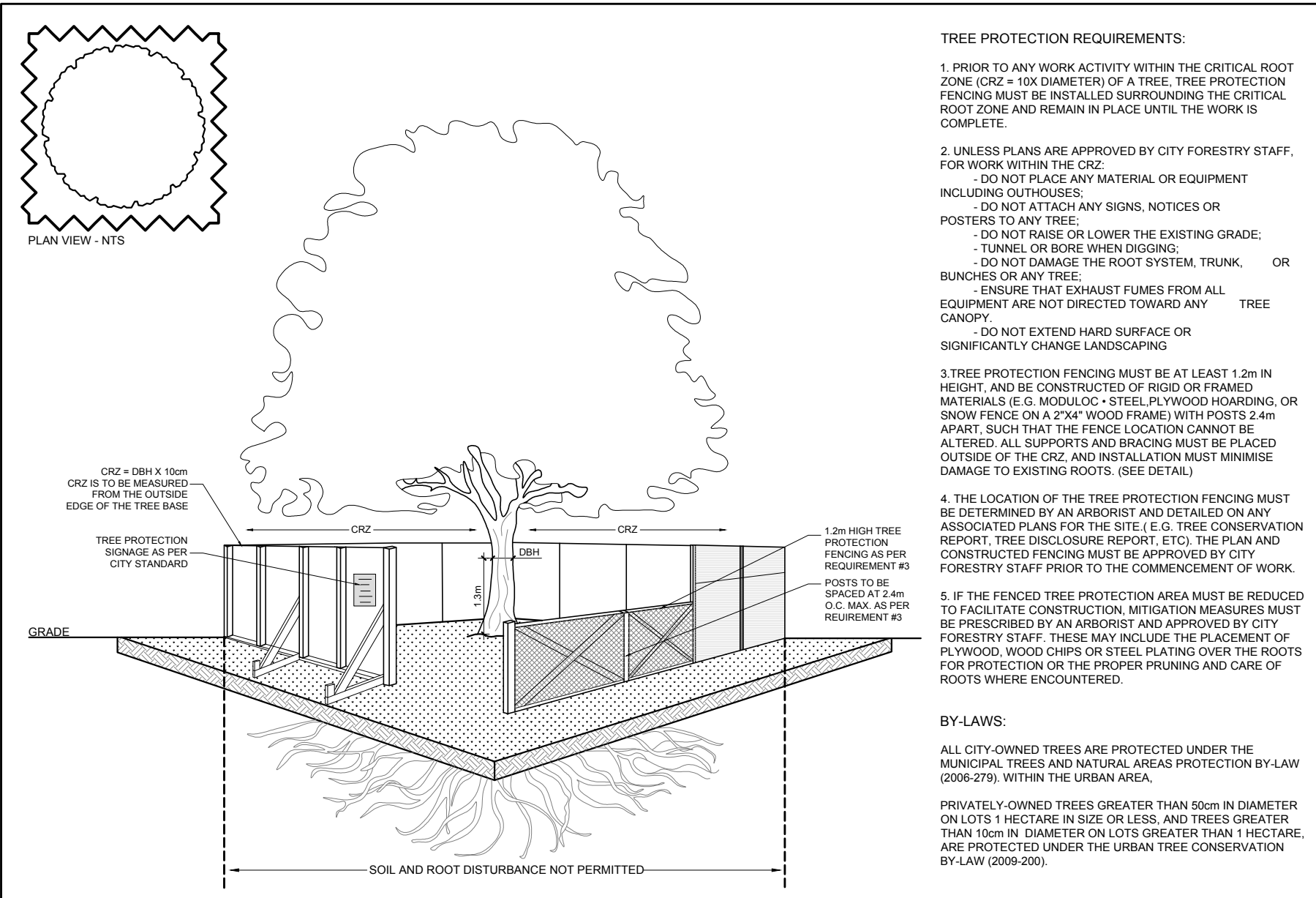
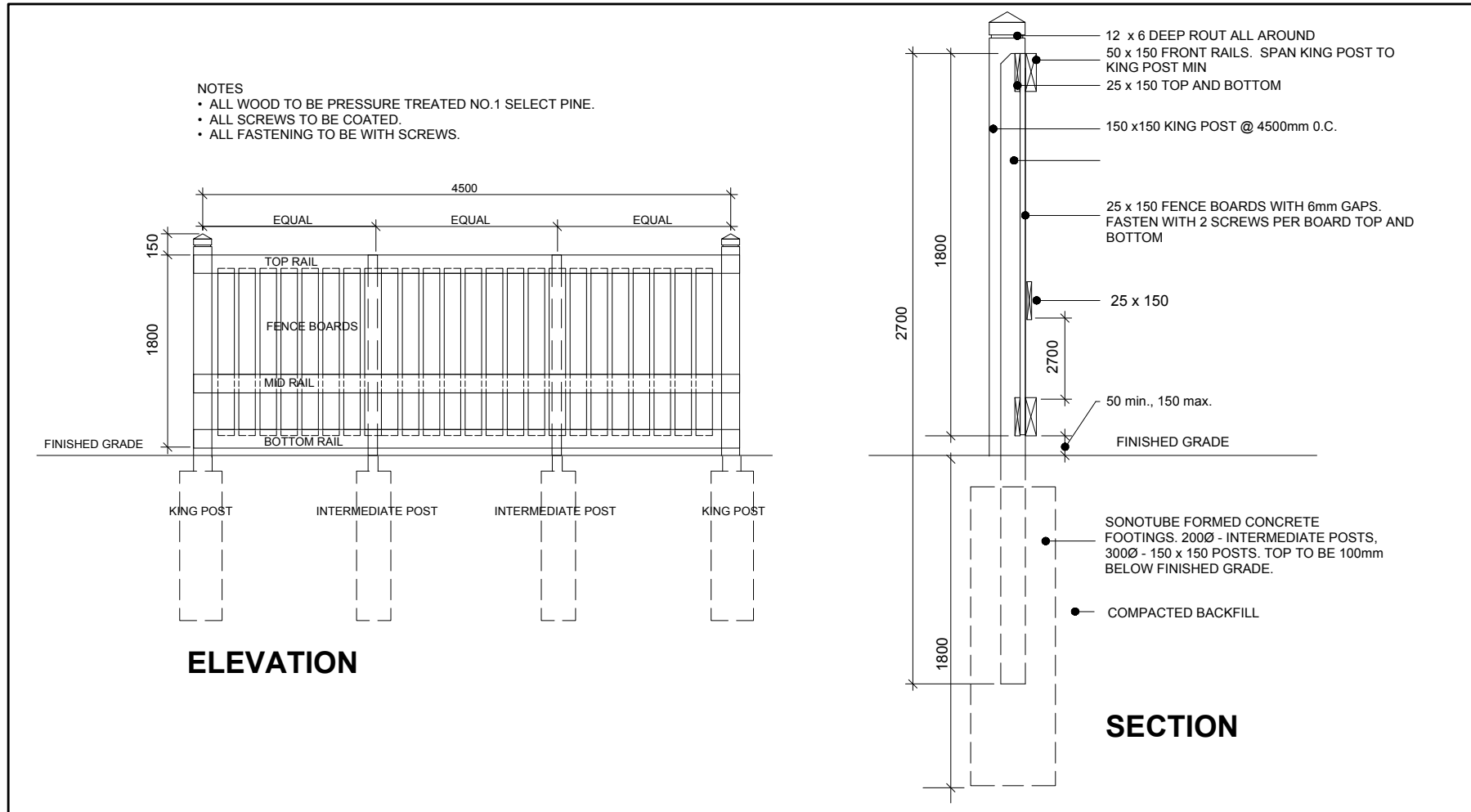


1 TREE CONSERVATION REPORT & LANDSCAPE PLAN- NORTH END OF SITE
SCALE: 1:100



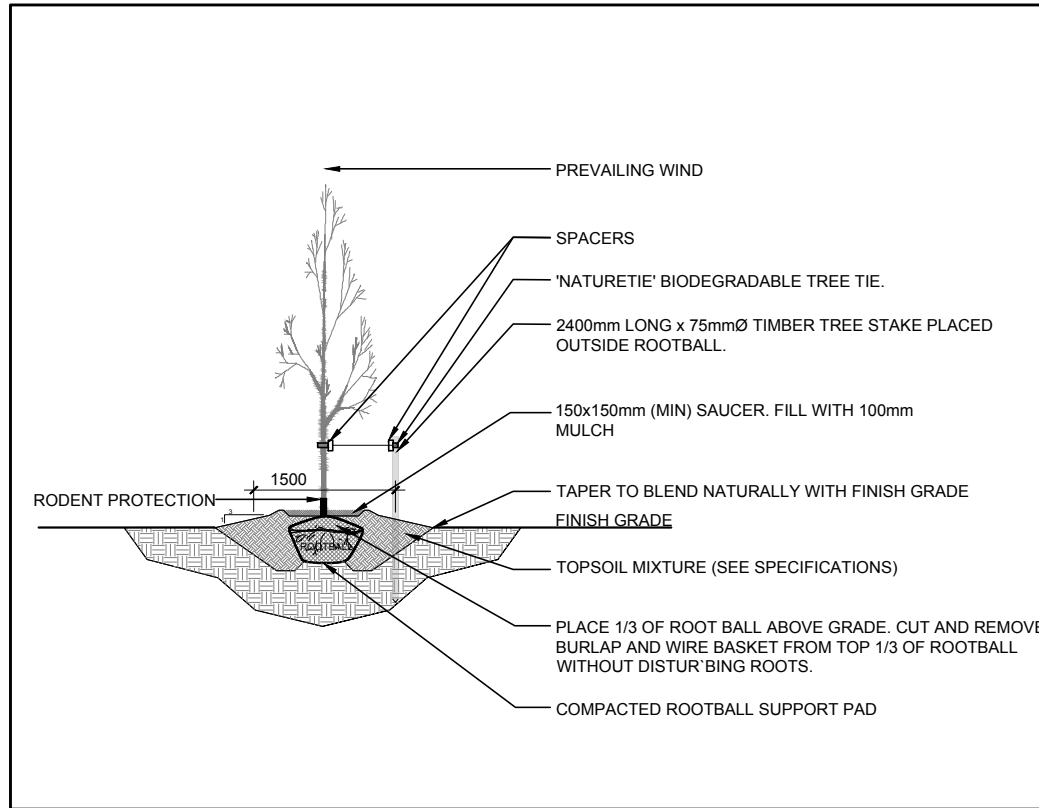
2 TREE PROTECTION FENCE
SCALE: NTS



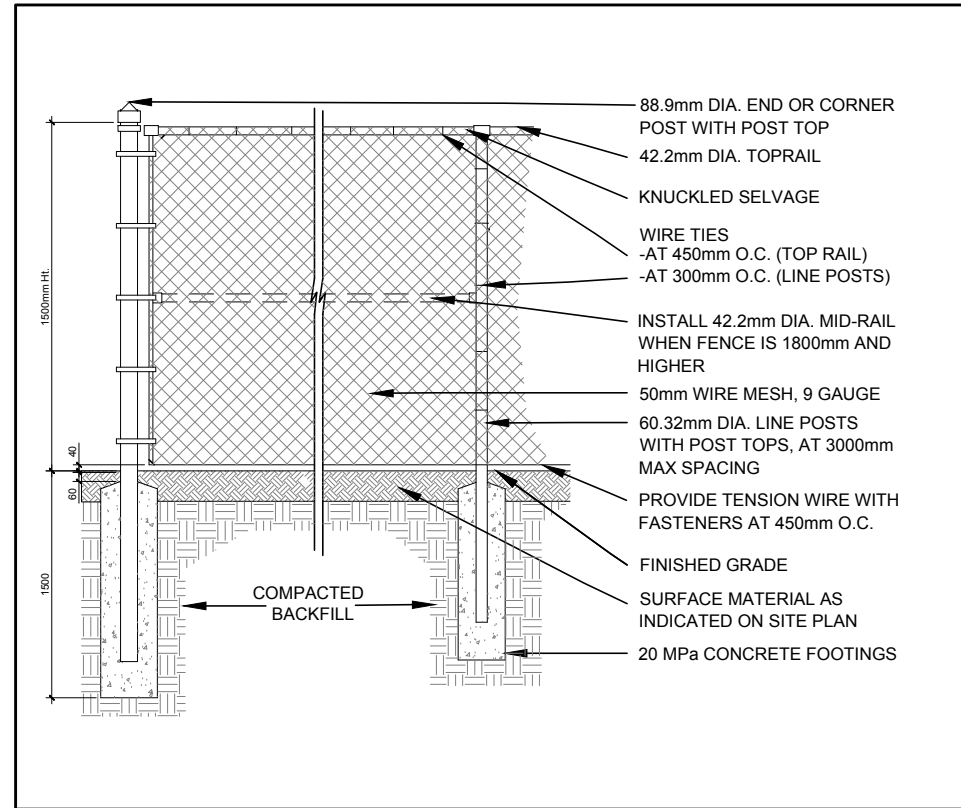
3 1.8m Ht. PRIVACY SCREEN
SCALE: NTS

GENERAL NOTES:

- It is the responsibility of the appropriate contractor or official to report any errors, omissions or discrepancies on this plan with actual site conditions to the Landscape Architect before proceeding with construction.
- The contractor is to notify all utility companies and authorities prior to any excavation and ascertain locations of underground services.
- The contractor is to reinstate all areas and items damaged as a result of construction activity.
- The contractor is to comply with all pertinent codes and by-laws.
- The contractor is to maintain a positive surface run-off throughout the entire construction period.
- The Landscape Architect is not responsible for subsurface conditions.
- The contractor is to identify all existing trees to remain on site with the Landscape Architect prior to construction.
- The contractor is to stake the proposed location of all plant material in conjunction with the Landscape Architect prior to excavation.
- Minimum distances for selected deciduous trees are as follows:
 - Building Foundations 7.5m
 - Sidewalks 1.5m
 - Public Streets 2.5m
 - Underground Infrastructure 2.0m
- All trees within 1m of underground utility trenches are to be excavated by hand.
- Remove all protective wrapping from tree trunks after installation.
- Staking of trees shall only be performed if necessary.
- Ensure that mulch is pulled back a min. distance of 75mm from base of tree trunk.



4 DECIDUOUS TREE PLANTING
SCALE: NTS



5 1.5m Ht. CHAIN LINK FENCE
SCALE: NTS

EXISTING TREE LIST						
KEY	QTY	BOTANICAL NAME	COMMON NAME	SIZE	CONDITION	REMARKS
TREES						
AN	2	<i>Acer negundo</i>	Manitoba Maple	200-500mm dbh	Fair	To be removed
AS	1	<i>Acer saccharum</i>	Sugar Maple	800mm dbh	Good	To remain
GT	1	<i>Gleditsia triacanthos</i>	Honey Locust	250mm dbh	Fair	To remain
HL	1	<i>Gleditsia triacanthos</i>	Honey Locust	480mm dbh	Fair	To remain
MM	1	<i>Acer negundo</i>	Manitoba Maple	300mm dbh	Fair	To be removed
PG	1	<i>Picea glauca</i>	White Spruce	250mm dbh	Good	To remain
OWNERSHIP						
				330 & 340 McLeod St		
				City of Ottawa		
				328 McLeod Street		
				City of Ottawa		
				330 McLeod Street		
				328 McLeod Street		

PROPOSED PLANT LIST						
KEY	QTY	BOTANICAL NAME	COMMON NAME	SIZE	CONDITION	Remarks
DECIDUOUS TREES						
JL	1	<i>Syringa reticulata</i>	Japanese Tree Lilac	60mm cal.	B&B	Single Leader

CLIENT

SMART LIVING PROPERTIES

226 Argyle Ave, Ottawa, ON K2P 1B9

CONSULTANTS

ARCHITECTS:

WOODMAN ARCHITECT ASSOCIATES LTD.

4 BEECHWOOD, SUITE 201, OTTAWA, ONTARIO, CANADA K1L 8L9
TEL: (613) 228-9850 • FAX: (613) 228-9886 • email: info@woodmanarchitect.com

CIVIL ENGINEERS:

McINTOSH PERRY

LEGEND

- EXISTING TREE TO REMAIN
- EXISTING TREE TO BE REMOVED
- PROPOSED DECIDUOUS TREE
- PROPOSED SOD
- PROPOSED RIVERSTONE MULCH
- PROPOSED PRECAST CONCRETE PAVERS
- PROPOSED TREE PROTECTION FENCE
- PROPOSED 1.8m Ht. PRIVACY SCREEN
- PROPOSED 1.5m Ht. CHAIN LINK FENCE
- PROPERTY LINE
- PROPOSED LANDSCAPE LIGHTING

5	REVISED PER CITY COMMENTS	12/13/2022	ML	JL
4	REVISED PER CITY COMMENTS	07/25/2022	ML	JL
3	REVISED PER FOTENN COMMENTS	06/29/2022	WF	JL
2	REVISED PER CITY COMMENTS	06/14/2022	ML	JL
1	ISSUED FOR DISCUSSION & REVIEW	10/05/2021	ML	JL

No.	Issue	Date	DR	CK
5	REVISED PER CITY COMMENTS	12/13/2022	ML	JL
4	REVISED PER CITY COMMENTS	07/25/2022	ML	JL
3	REVISED PER FOTENN COMMENTS	06/29/2022	WF	JL
2	REVISED PER CITY COMMENTS	06/14/2022	ML	JL
1	ISSUED FOR DISCUSSION & REVIEW	10/05/2021	ML	JL

JAMES B. LENNOX & ASSOCIATES INC. LANDSCAPE ARCHITECTS

3332 CARLING AVE. OTTAWA, ONTARIO K2H 5A8
Tel. (613) 722-5168 Fax. (613) 722-5168

PROJECT

PROPOSED FOUR STOREY ADDITION

330 McLEOD STREET, OTTAWA ON

DRAWING

TREE CONSERVATION REPORT & LANDSCAPE PLAN

STAMP

SCALE: AS SHOWN

START DATE: AUGUST 2021

PROJECT NO.: 21SM2109

PROJECT NORTH

DRAWING NO.: L.1

PLOT SIZE ARCH-D