



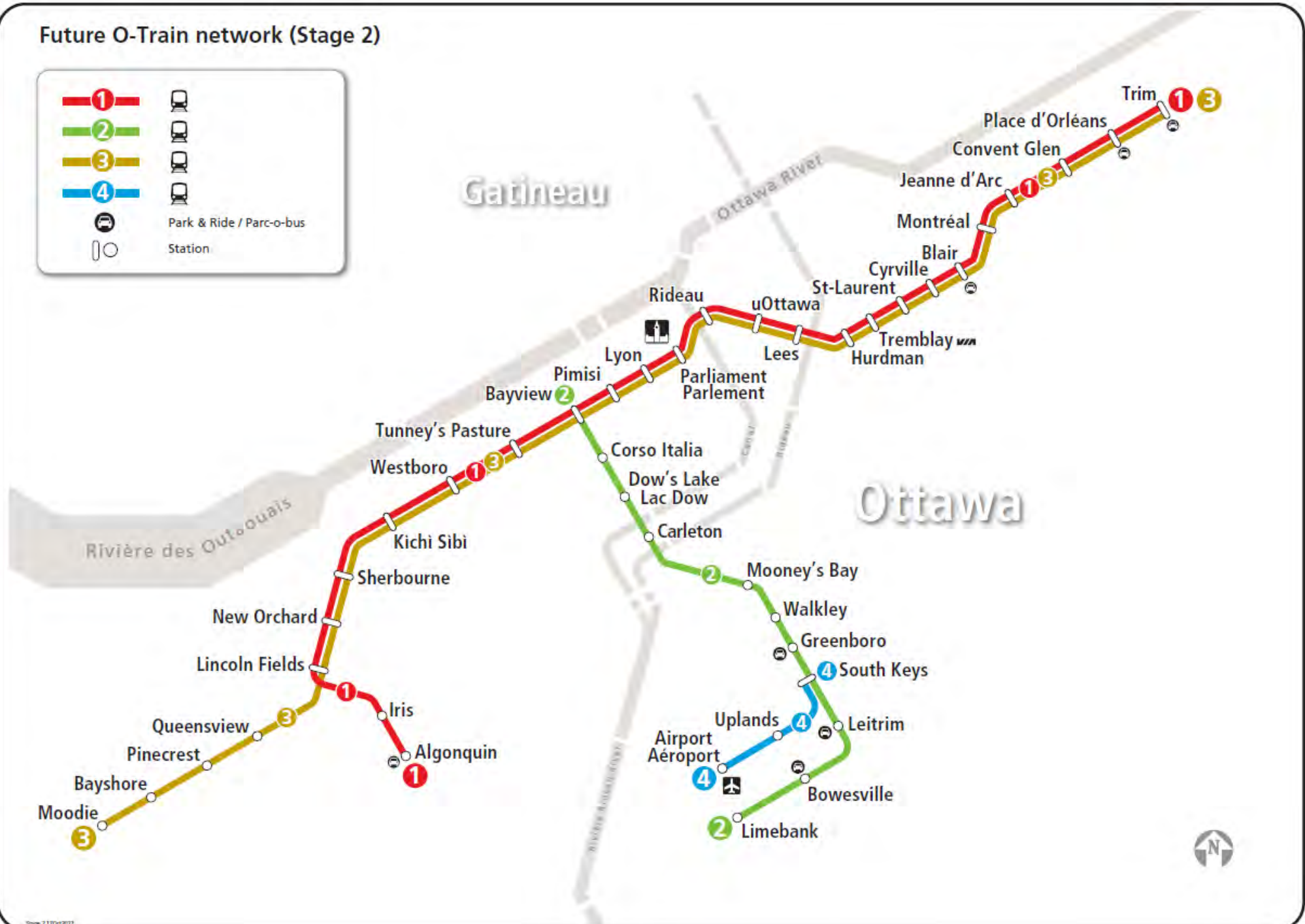
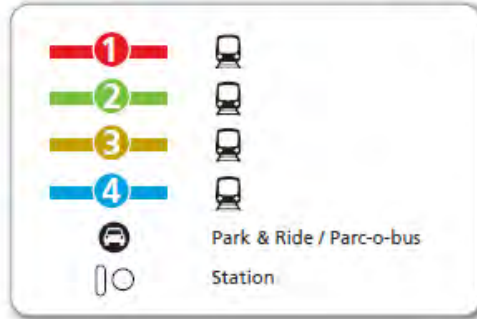
**← STAGE  
ETAPE ↓**



March 29, 2023

# Project Overview

Future O-Train network (Stage 2)





**EAST** EXTENSION  
PROLONGEMENT **EST**





# Montréal Station





# Jeanne d'Arc Station





# Convent Glen Station



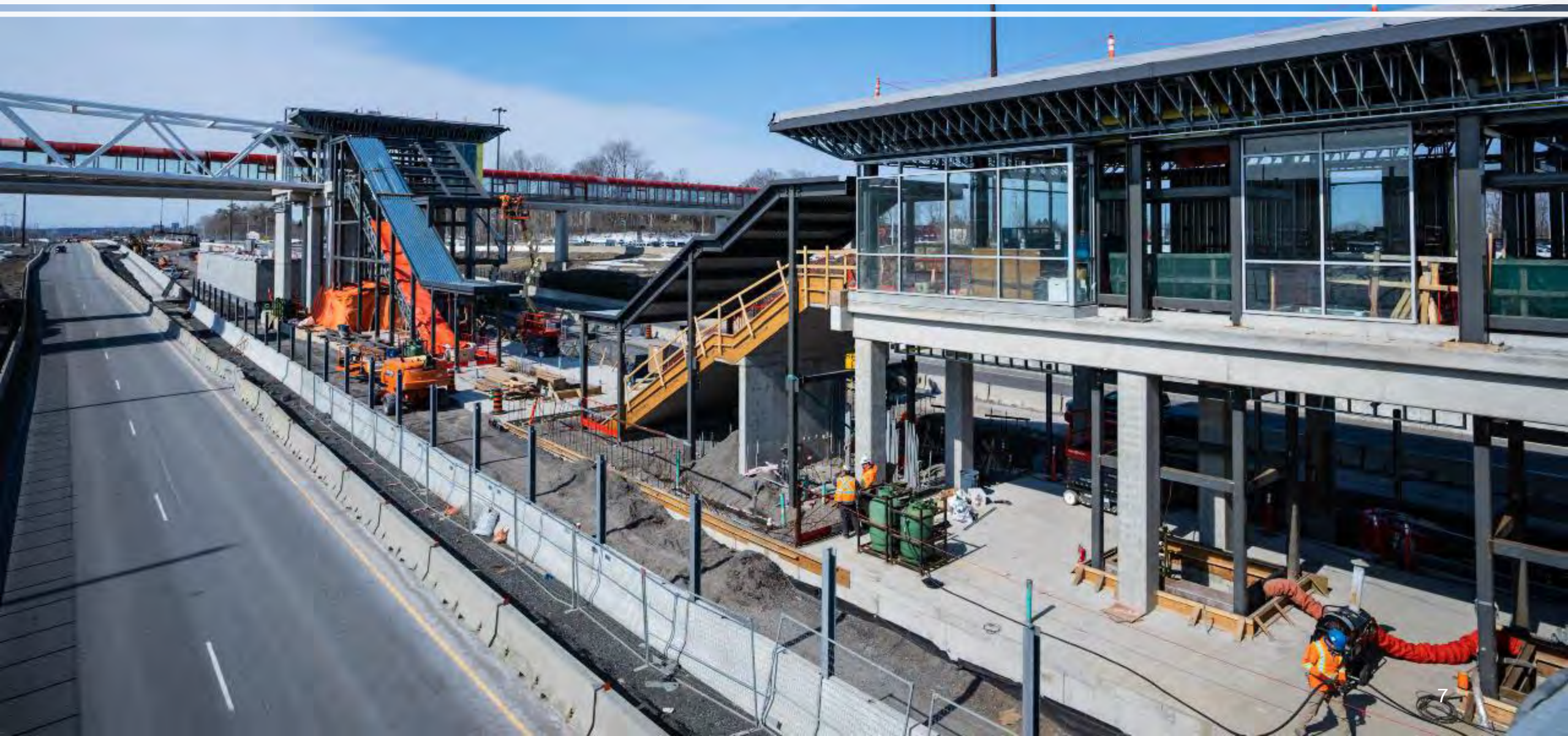


# Place d'Orléans Station



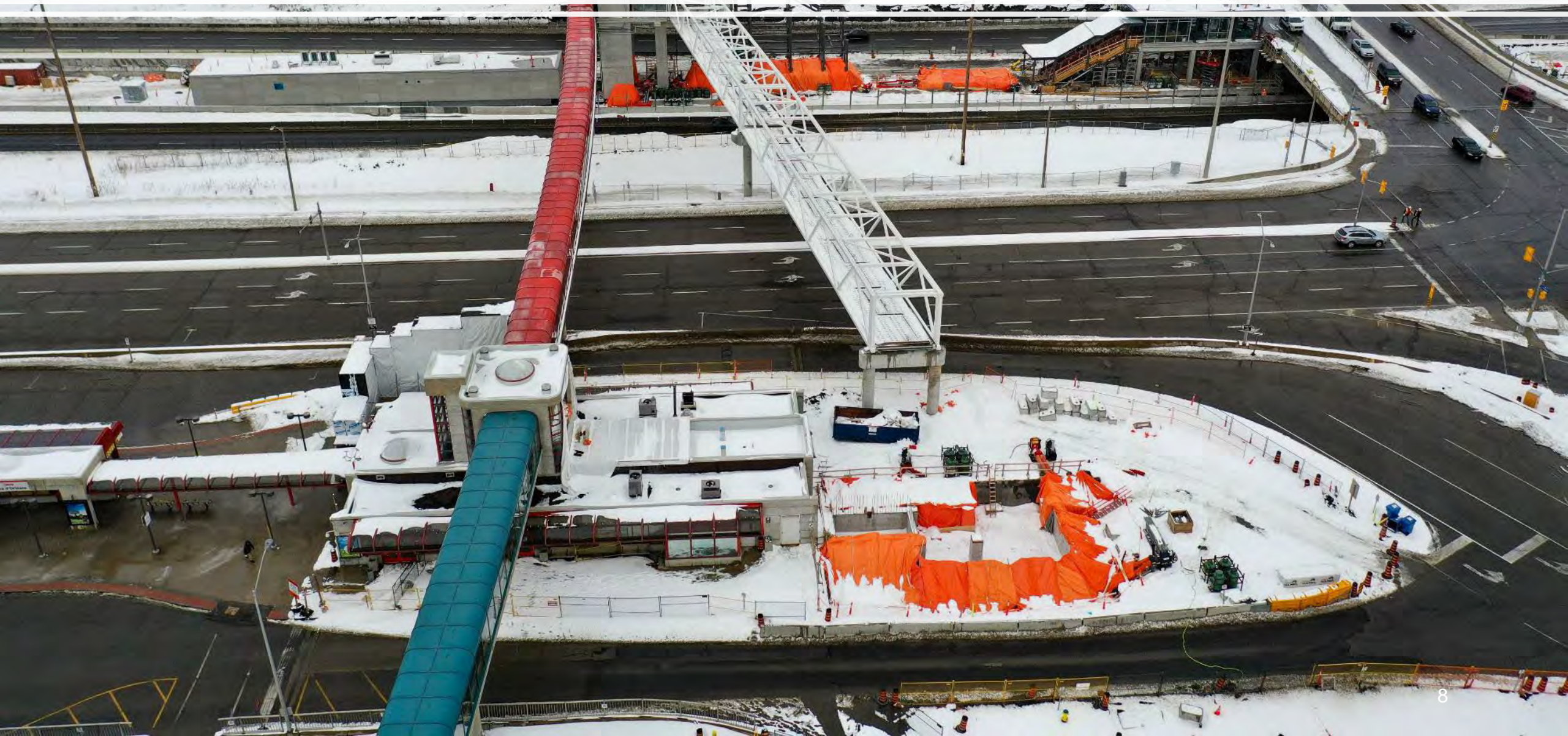


# Place d'Orléans (Cont'd)





# Place d'Orléans Pedestrian Bridge





# Trim Station





# Upcoming O-Train East Construction Activities

- 🎯 **2023:** Progress on all five stations
- 🎯 **2023:** Completion of rail installation and catenary installation
- 🎯 **2023:** Preliminary commissioning of communications systems
- 🎯 **2023:** Start of train testing on the line (fall timeline)



# O-Train East Mobility Impacts

Location	Timeline	Traffic & Mobility Impacts
Highway 174	Through Winter 2022 to Spring 2023	Overnight lane and ramp closures as required
Montreal Road	Fall 2022 to Summer 2023	Lane closures under OR 174 overpass and ramp closures to complete utility work. Buses detoured.
Jeanne d'Arc Blvd	Fall 2022 to Summer 2023	Jeanne d'Arc Blvd southbound reduced by a single lane for station works. This work will take place after the northbound direction (previous point). Exact dates are still not confirmed.





# O-Train East Project Schedule Update

Work Activity	2023					2024				2025			
1. Completion of Track													
2. Systems Installation													
3. Systemwide Commissioning													
4. Operations & Maintenance Training													
5. EWC Handover to City													
6. Trial Running													
7. Trial Operations → Passenger Service													







**WEST** EXTENSION  
PROLONGEMENT **OUEST**





# Westboro Station





# Kìchì Sìbì Station



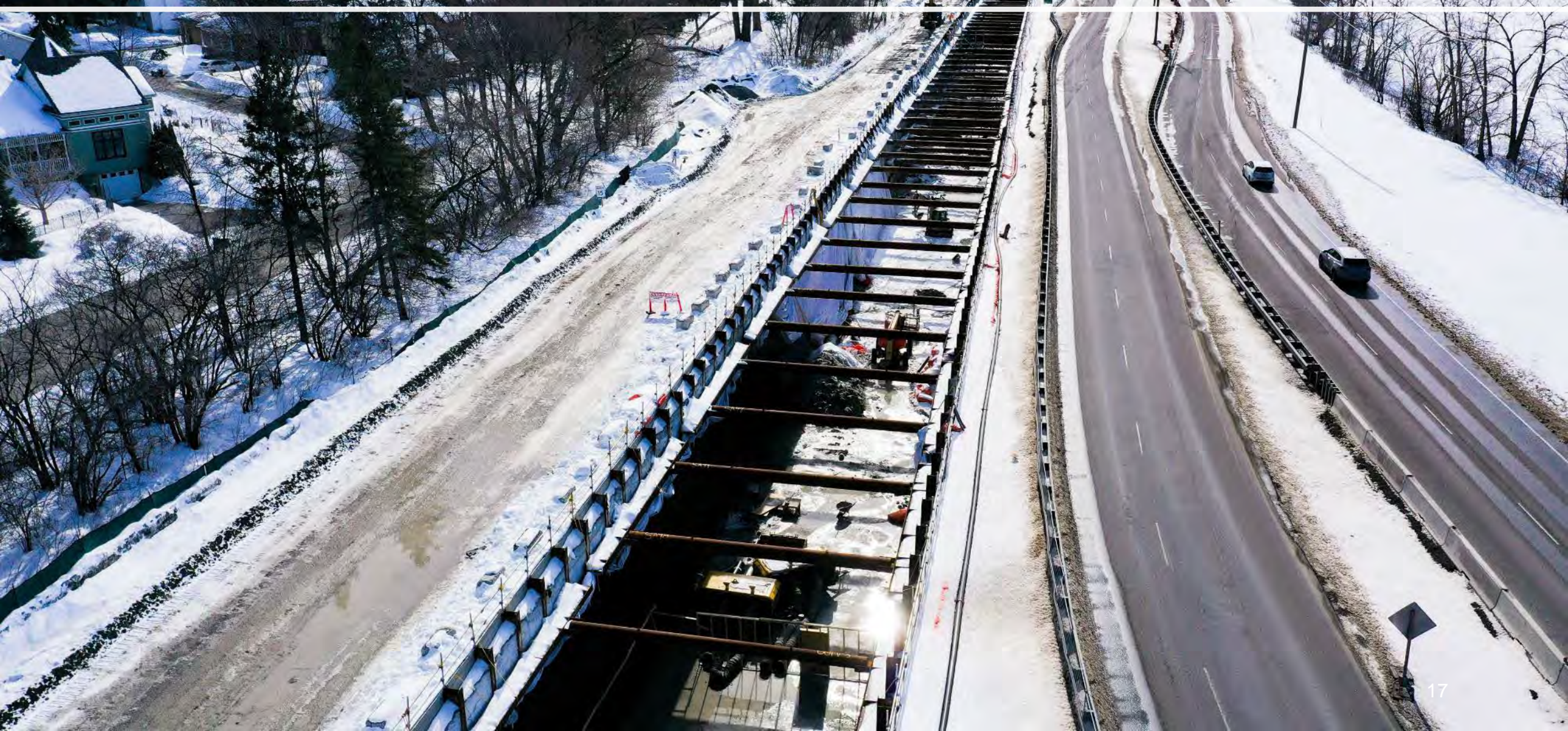


# Kìchì Sìbì Temporary Pedestrian Bridge





# Sir John A MacDonald (SJAM) Parkway Cut & Cover Tunnel



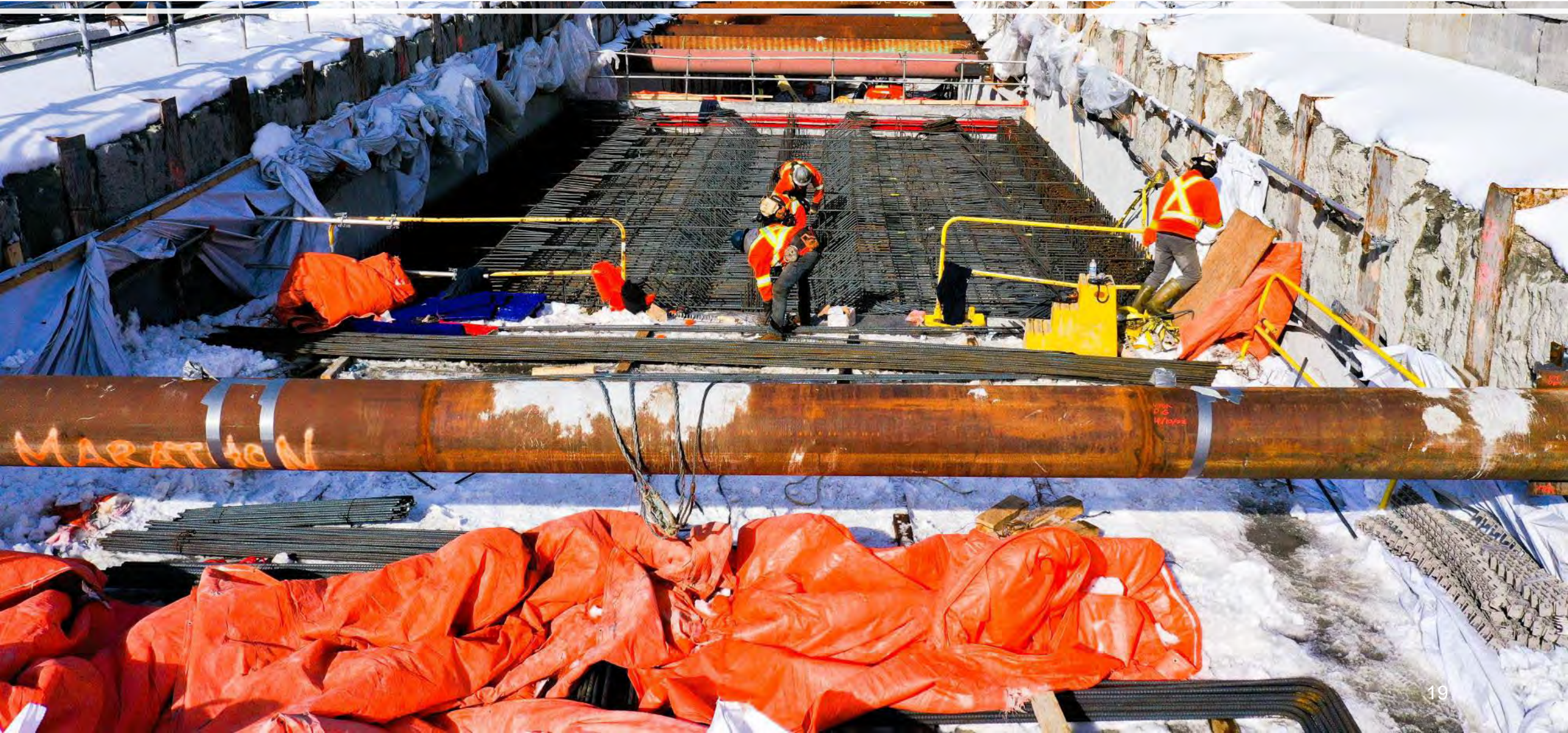


# SJAM Cut & Cover Tunnel (Cont'd)





# SJAM Cut & Cover Tunnel (Cont'd)



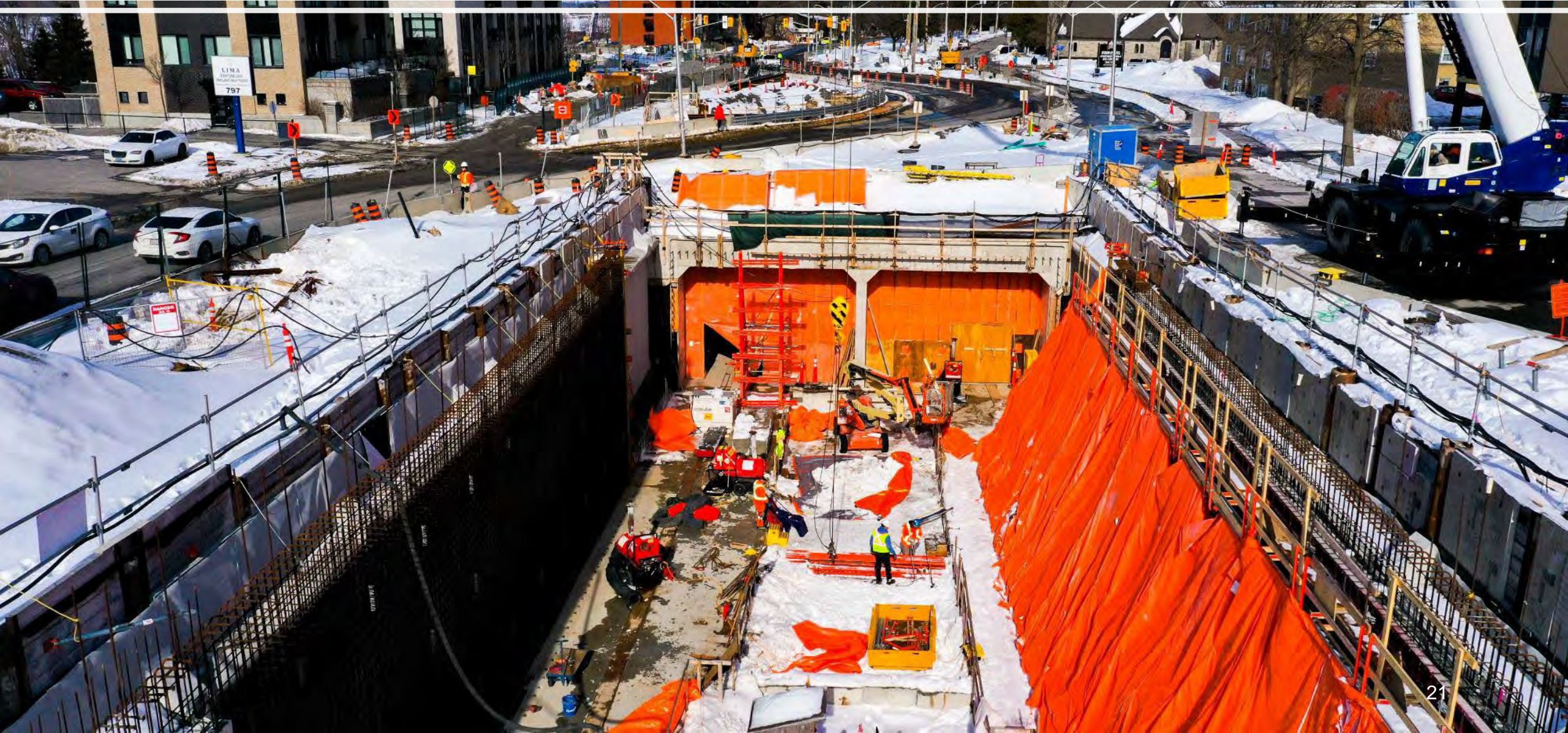


# Byron Linear Park





# Byron Cut and Cover Tunnel (Cont'd)



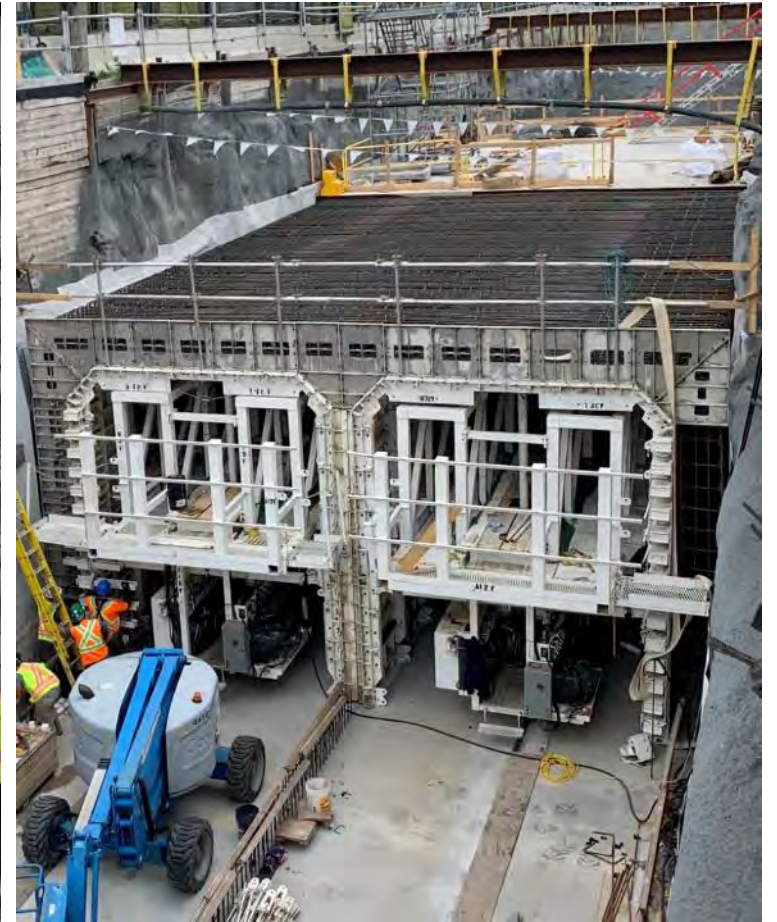


# Byron Cut and Cover Tunnel





# Everest Traveller System





# Everest Traveller System Sequencing





# Lincoln Fields Station





# Iris Station Area





# Algonquin Station





# Algonquin Station Pedestrian Bridge



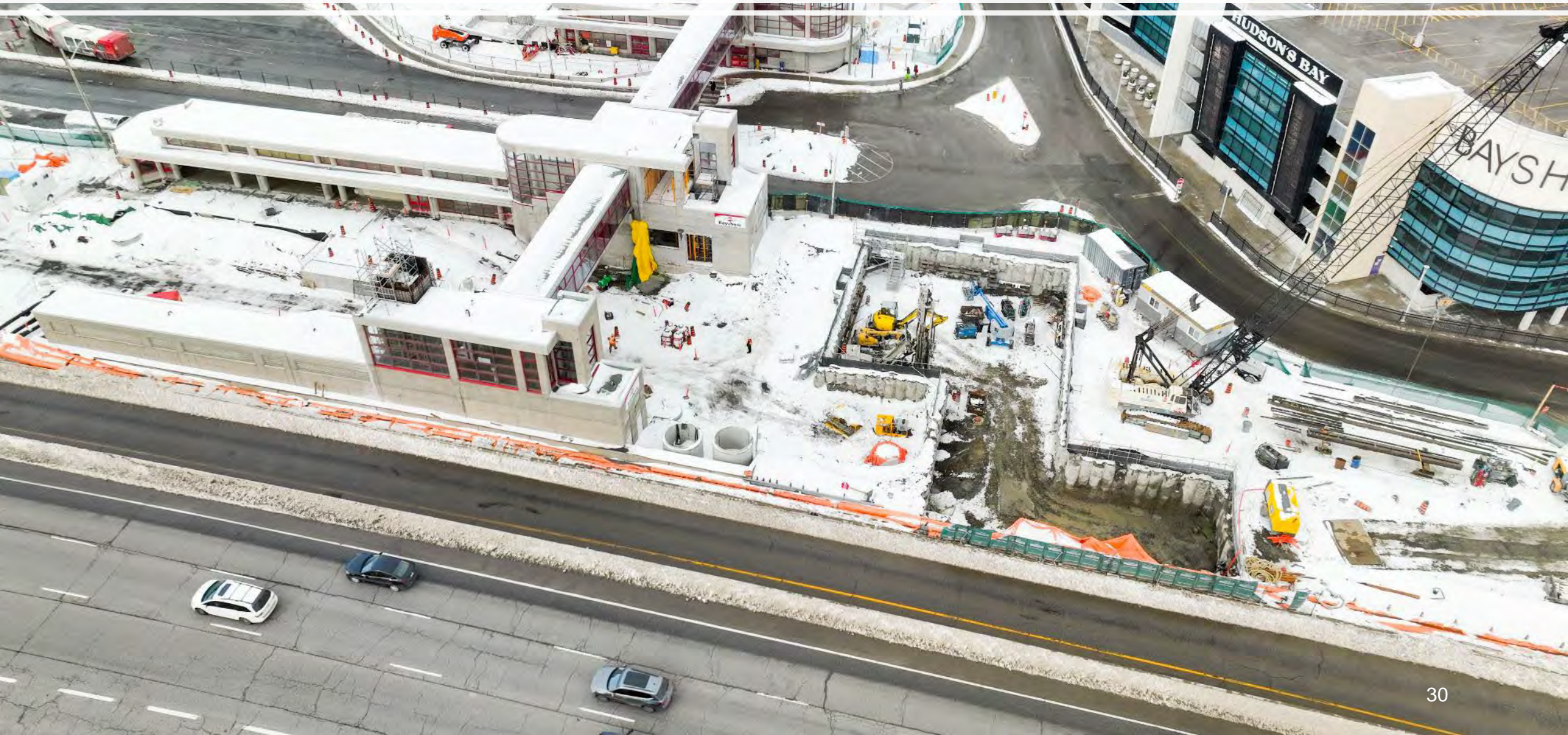


# Queensview Station





# Bayshore Station





# Moodie Station





# Moodie Light Maintenance and Storage Facility (LMSF)





# Moodie LMSF (Cont'd)





# Moodie LMSF (Cont'd)





# LMSF Rail Installation





# Upcoming O-Train West Construction Activities

- 🎯 **Through 2023:** Excavation, structural work, and construction of Cut and Cover Tunnels will continue
- 🎯 **Through 2023:** Rail installation begins at Moodie LMSF
- 🎯 **Summer:** Installation of Queensview Station Pedestrian Bridge
- 🎯 **Summer:** Construction of approach ramps to Woodroffe Pedestrian Bridge





# O-Train West Mobility Impacts

Location	Timeline	Traffic & Mobility Impacts
Transitway (Dominion to Tunney's Pasture)	Through to revenue service	Full closure with buses detoured onto Scott Street
Richmond Road (Cleary Ave to McEwen Ave)	Through Fall 2023	Multiple off-peak lane closures, intersection reconfigurations and temporary road detours
Richmond Road (Westbound from New Orchard to McEwen Ave)	Through Fall 2023	Westbound Richmond detoured to Ambleside
Woodroffe (Richmond to Byron)	Spring 2023	Full closure for approximately 2 weeks to remove temporary bridge and build the permanent road over the tunnel.





# O-Train West Mobility Impacts (Cont'd)

Location	Timeline	Traffic & Mobility Impacts
Carling Avenue (Lincoln Fields)	Fall 2023	Entrance to Lincoln Fields Station shifted west and south of Carling with the addition of a new intersection
Transitway (Pinecrest to Bayshore)	Through to revenue service	Buses detoured onto Highway 417
Highway 417 and Pinecrest Interchange	Through Fall 2023	Westbound off-ramp closed to traffic
Highway 417 (Pinecrest to Woodroffe)	Spring 2023	Closure of Hwy 417 WB then 417 EB over weekends





# O-Train West Mobility Impacts (Cont'd)

Location	Timeline	Traffic & Mobility Impacts
Transitway (Iris to Baseline)	Through to revenue service	Closure of Transitway with buses detoured onto Woodroffe Avenue. Iris alignment is in final configuration
Woodroffe Pedestrian Bridge	Through to Spring 2023	Pedestrian Bridge and MUP detoured onto Carling Ave





# O-Train West Project Schedule Update

Work Activity	2023				2024				2025				2026			
1. Moodie Light Maintenance Facility																
2. Parkway Tunnel Construction					→											
3. Completion of Track & Systems Installation																
4. Systemwide Commissioning																
5. Operations & Maintenance Training																
6. EWC Handover to City																◆
7. Trial Running																
8. Trial Operations → Passenger Service																





# Alstom Citadis Production

Of the 38 Alstom Stage 2 vehicles







**SOUTH** EXTENSION  
PROLONGEMENT **SUD**





# Bayview Station





## Bayview Station (Cont'd)





# Corso Italia Station



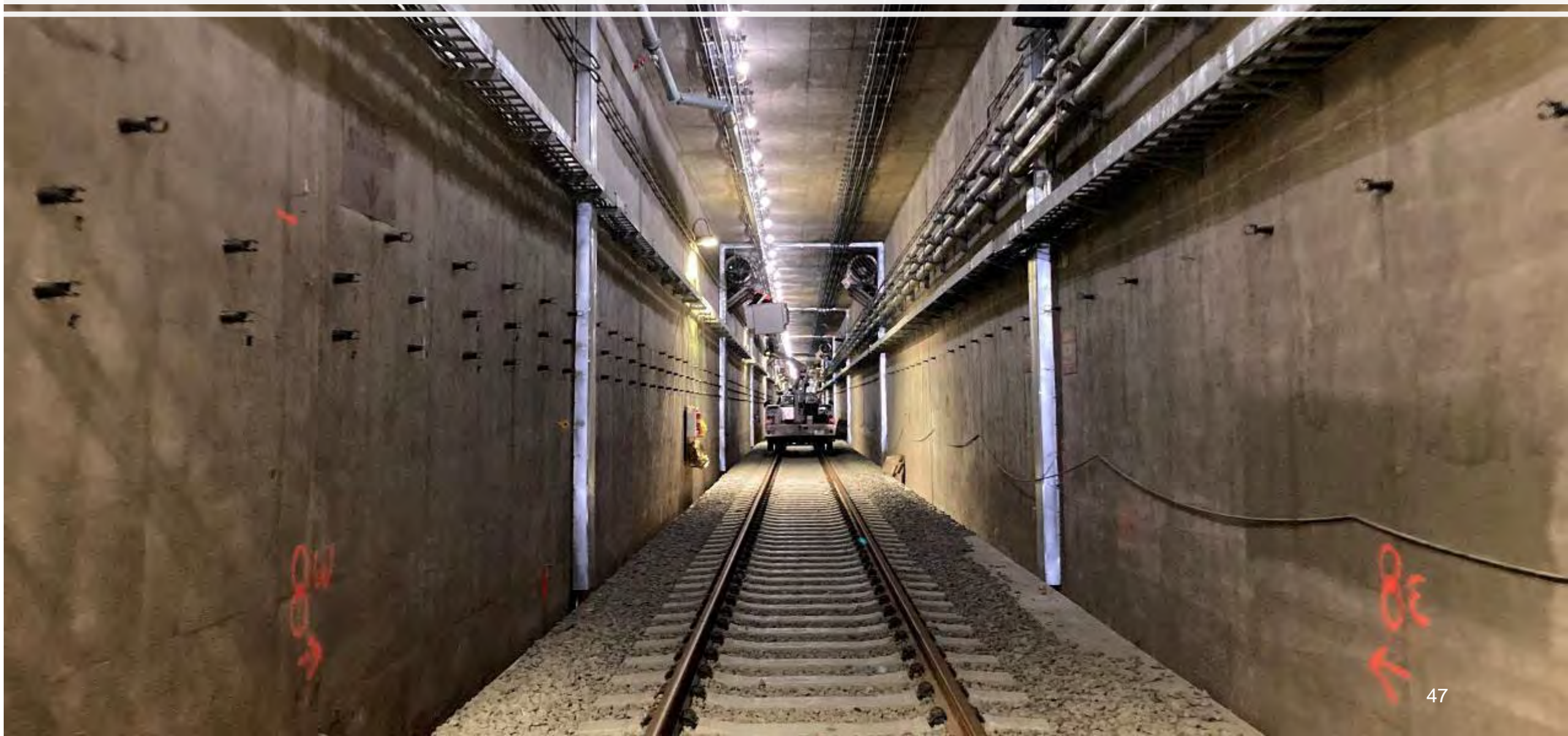


# Dow's Lake Station





# Dow's Lake Tunnel





# Carleton Station





# Guideway Progress





# Ellwood Diamond Grade Separation



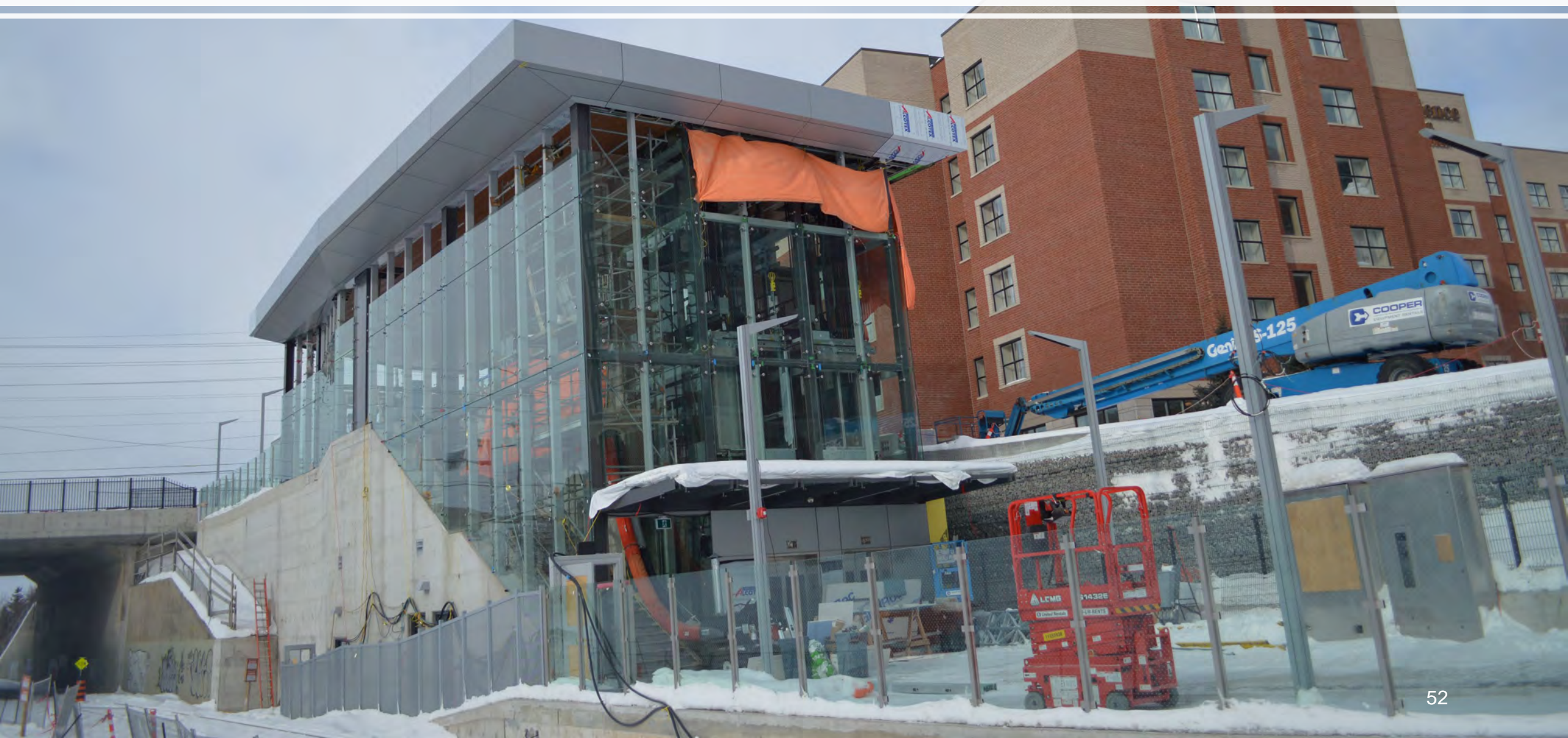


# Walkley Station





# Walkley Station (Cont'd)





# Walkley MSF Train Inspection Building





# Greenboro Station





# South Keys Station





# Leitrim Station





# Bowesville Station





# Limebank Elevated Guideway





# Limebank Station





# Uplands Station





## Uplands Station (Cont'd)





# Airport Station





# Upcoming O-Train South Activities

- 🎯 **Spring:** Track installation and rail systems installation completion
- 🎯 **Spring:** Stadler vehicle testing and commissioning on entire line
- 🎯 **Through 2023:** Station and bridge construction completion
- 🎯 **Fall:** Trial running and substantial completion





# O-Train South Project Schedule Update

Work Activity	Jan	Feb	Mar	Apr	May	Jun	Jul	Aug	Sep	Oct	Nov	Dec
1. Completion of Track												
2. Systems Installation & Signal Testing												
3. Operations & Maintenance Training												
4. Systemwide Commissioning												
5. Trial Running leading to handover												
6. Trial Operations → Passenger Service												





# O-Train South Traffic and Mobility Impacts

Location	Timeline	Traffic & Mobility Impacts
MUP at South Keys	Fall 2020 to Spring 2023	MUP on the west side of South Keys Station will be relocated in different stages throughout the year to accommodate track construction
MUP at Walkley	Through to Spring 2023	The temporary closure of the MUP on the west side of the Marriott Hotel and Warehouse Lofts is required for Walkley Station construction
MUP at Brookfield	Through to Spring 2023	MUP relocation south of its previous location required to complete construction of the Ellwood Diamond rail bridge





# O-Train South Traffic and Mobility Impacts (Cont'd)

Location	Timeline	Traffic & Mobility Impacts
Trillium MUP at Carling	Through to December 2022	MUP closed north of Carling to support utility/station construction; pedestrian and cyclist detours are in place
Hunt Club Rd Lane Closures	Fall 2022 to Winter 2023	Lane closures are required on Hunt Club Road to support Line 2 construction work
Earl Armstrong Rd & Bowesville Rd	Fall 2022 to Spring 2023	Multiple lane closures to re-align the intersection and install a traffic light





# Next Steps

- ➔ Receive results of the Peer Review of O-Train South Line
- ➔ Detailed review of O-Train South Line final commissioning and Trial Running requirements at LRT Sub-committee Meeting
- ➔ Continue to action the LRT Public Inquiry recommendations





# Communicating Stage 2 Updates



**Bi-weekly construction update:**  
Construction progress update



**LRT Sub-Committee and Quarterly Memo:**  
Project and construction updates



**Stakeholder Relations:**  
Direct communication with your office,  
residents and stakeholders







**Presentations**  
Community presentations and  
consultations





# Stage 2 Launch Communications Strategy

-  Information campaign to **educate and build excitement** for the O-Train expansion
-  This includes web, social, events, and outreach
-  This will be incorporated into a larger strategy to improve customer communications and build public trust
-  More information to come in May



# Stay connected



For more progress videos, visit: [youtube.com/c/Octranspo1Ottawa](https://youtube.com/c/Octranspo1Ottawa)



Follow us on Instagram at: [@Stage2Etape2](https://www.instagram.com/Stage2Etape2)



Visit our website: [Ottawa.ca/Stage2](https://Ottawa.ca/Stage2)



Sign up for e-newsletters: [Ottawa.ca/Stage2Connect](https://Ottawa.ca/Stage2Connect)



Contact us: [Stage2@ottawa.ca](mailto:Stage2@ottawa.ca)





# Questions?

