

LOT 36
REGISTERED PLAN 50M-63
PART 6 PLAN 50R-3712

I REQUIRE THIS PLAN TO BE DEPOSITED UNDER THE LAND TITLES ACT.
DATE: _____

PLAN 4R-
RECEIVED AND DEPOSITED
DATE: _____

T. HARTWICK
ONTARIO LAND SURVEYOR

REPRESENTATIVE FOR
LAND REGISTRAR FOR THE
LAND TITLES DIVISION OF
OTTAWA-CARLETON NO. 4.

SCHEDULE					
PURPOSE	AREA (Sq.m.)	PART	LOT	CONCESSION	PIN
SEVERED LAND NO.1	279.9	1			
SEVERED LAND NO.2	343.4	2	PART OF B	11	ALL OF 14518-0400
RETAINED LAND	1198.0	3			

PLAN OF SURVEY OF
**PART OF LOT B
CONCESSION 11**
Geographic Township of Cumberland
CITY OF OTTAWA
Surveyed by Annis, O'Sullivan, Vollebek Ltd.

Scale 1 : 200

Metric
DISTANCES AND COORDINATES SHOWN ON THIS PLAN ARE IN METRES AND CAN BE CONVERTED TO FEET BY DIVIDING BY 0.3048.

Surveyor's Certificate
I CERTIFY THAT:
1. This survey and plan are correct and in accordance with the Surveys Act, the Surveyors Act and the Land Titles Act and the regulations made under them.
2. The survey was completed on the ___ day of _____, 2023.

Date: _____
T. Hartwick
Ontario Land Surveyor

This plan of survey relates to AOLS Plan Submission Form Number V-40746

Committee of Adjustment
Received | Reçu le
Revised | Modifié le : 2023-03-08
City of Ottawa | Ville d'Ottawa
Comité de dérogation

Distances shown on this plan are ground distances and can be converted to grid distances by multiplying by the combined scale factor of 0.999963.

Bearings are grid, derived from Can-Net 2016 Real Time Network GPS observations on reference points A and B, shown hereon, having a bearing of N33°43'19"W and are referenced to Specified Control Points 01919680184 and 019198434761, MTM Zone 9 (76°30' West Longitude) NAD-83 (original).

For bearing comparisons, a rotation of 0°1'10" counter-clockwise was applied to bearings on plans (P1), (P2) and (P3).

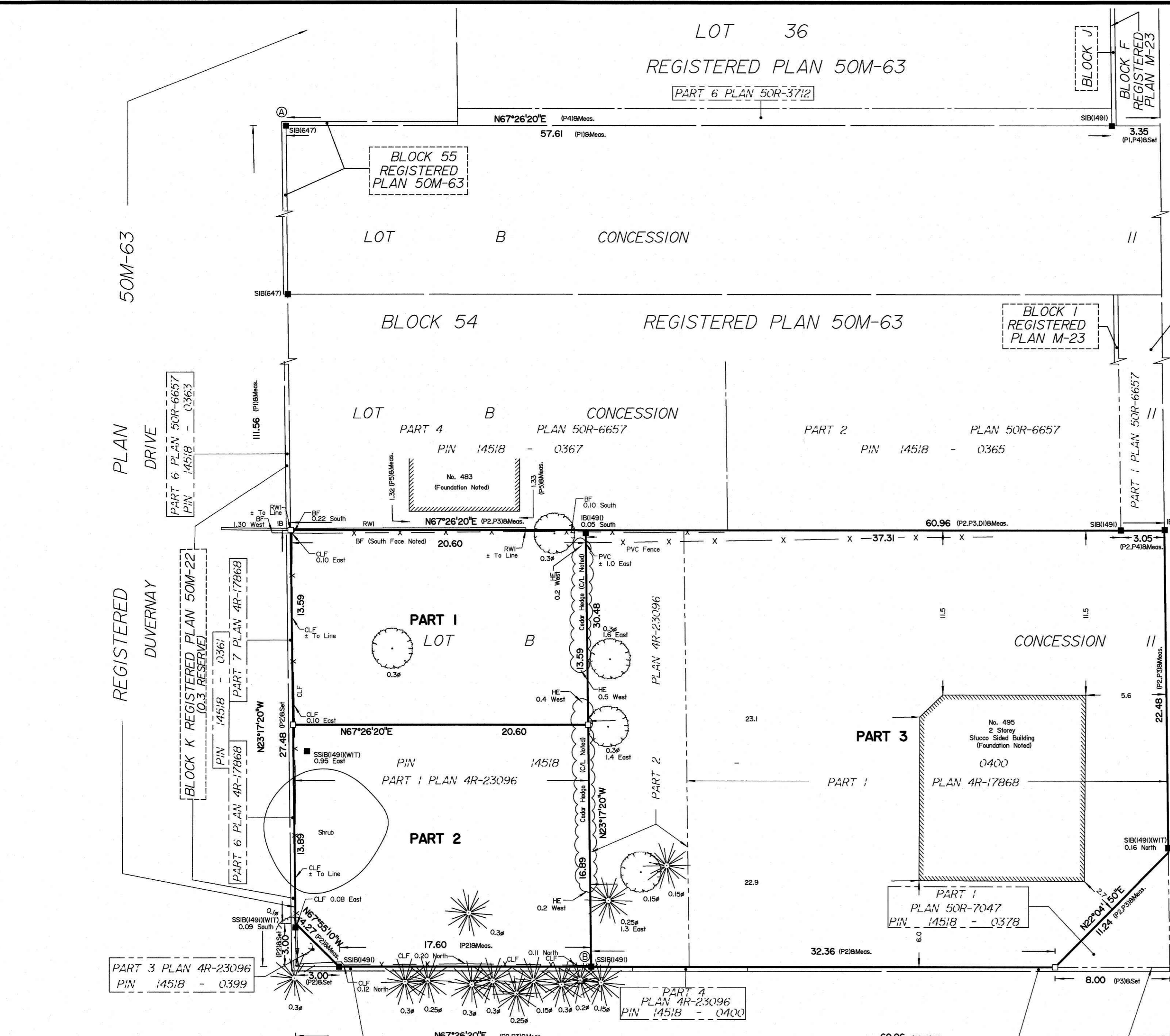
Coordinates are derived from Can-Net 2016 Real Time Network GPS observations referenced to Specified Control Points 01919680184 and 019198434761, MTM Zone 9 (76°30' West Longitude) NAD-83 (original).

Coordinate values are to urban accuracy in accordance with O. Reg. 216/10.

.01919680184	Northing	5040610.16	Easting	384736.56
.019198434761	Northing	5036178.12	Easting	372436.11
.Point A	Northing	5036983.22	Easting	383518.29
.Point B	Northing	5036888.61	Easting	383581.43

Caution: Coordinates cannot, in themselves, be used to re-establish corners or boundaries shown on this plan.

- Notes & Legend**
- Denotes Survey Monument Planted
 - Denotes Survey Monument Found
 - SIB Standard Iron Bar
 - SSIB Short Standard Iron Bar
 - IB Iron Bar
 - (WIT) Witness
 - (AOG) Annis, O'Sullivan, Vollebek Ltd.
 - Meas. Measured
 - (P1) Registered Plan 50M-63
 - (P2) Plan 4R-23096
 - (P3) Plan 4R-17868
 - (P4) (AOG) Plan dated April 30, 2022
 - (P5) (1491) Plan dated November 15, 1994
 - Deciduous Tree
 - ☼ Coniferous Tree
 - CLF Chain Link Fence
 - BF Board Fence
 - RWI Interlock Retaining Wall
 - HE Hedge Centerline



ROAD ALLOWANCE BETWEEN CONCESSIONS 10 AND 11
CHEMIN TENTH LINE ROAD (REGIONAL ROAD No. 47)
PIN 14521 - 1233