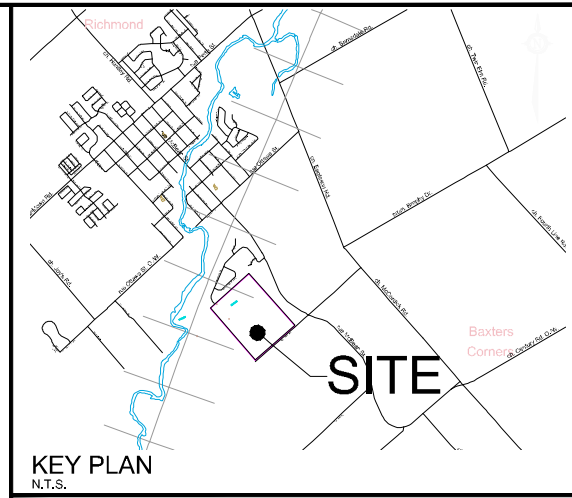


M:\2020\120152\CAD\Planning\Figures\120152-SEV.dwg, Oct 27, 2022 - 4:28pm, wslloss

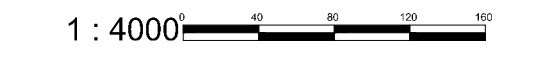


# CONSENT APPLICATION

6305 DOBSON LANE

SOUTH HALF LOT 23,  
CONCESSION 2  
GEOGRAPHIC TOWNSHIP OF GOULBOURN  
CITY OF OTTAWA  
**Committee of Adjustment**  
Received | Reçu le

2022-11-09  
City of Ottawa | Ville d'Ottawa  
Comité de dérogation



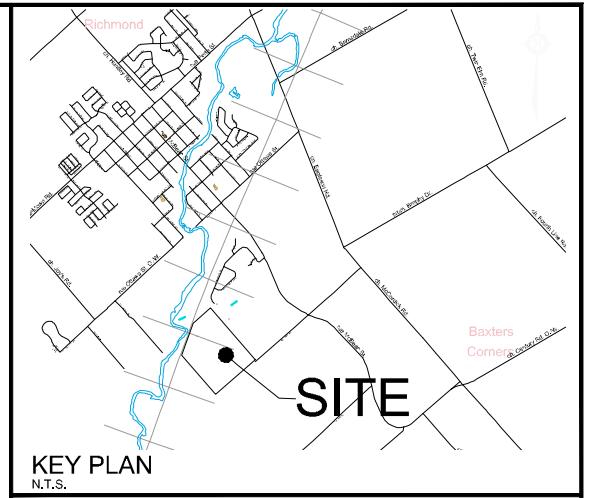
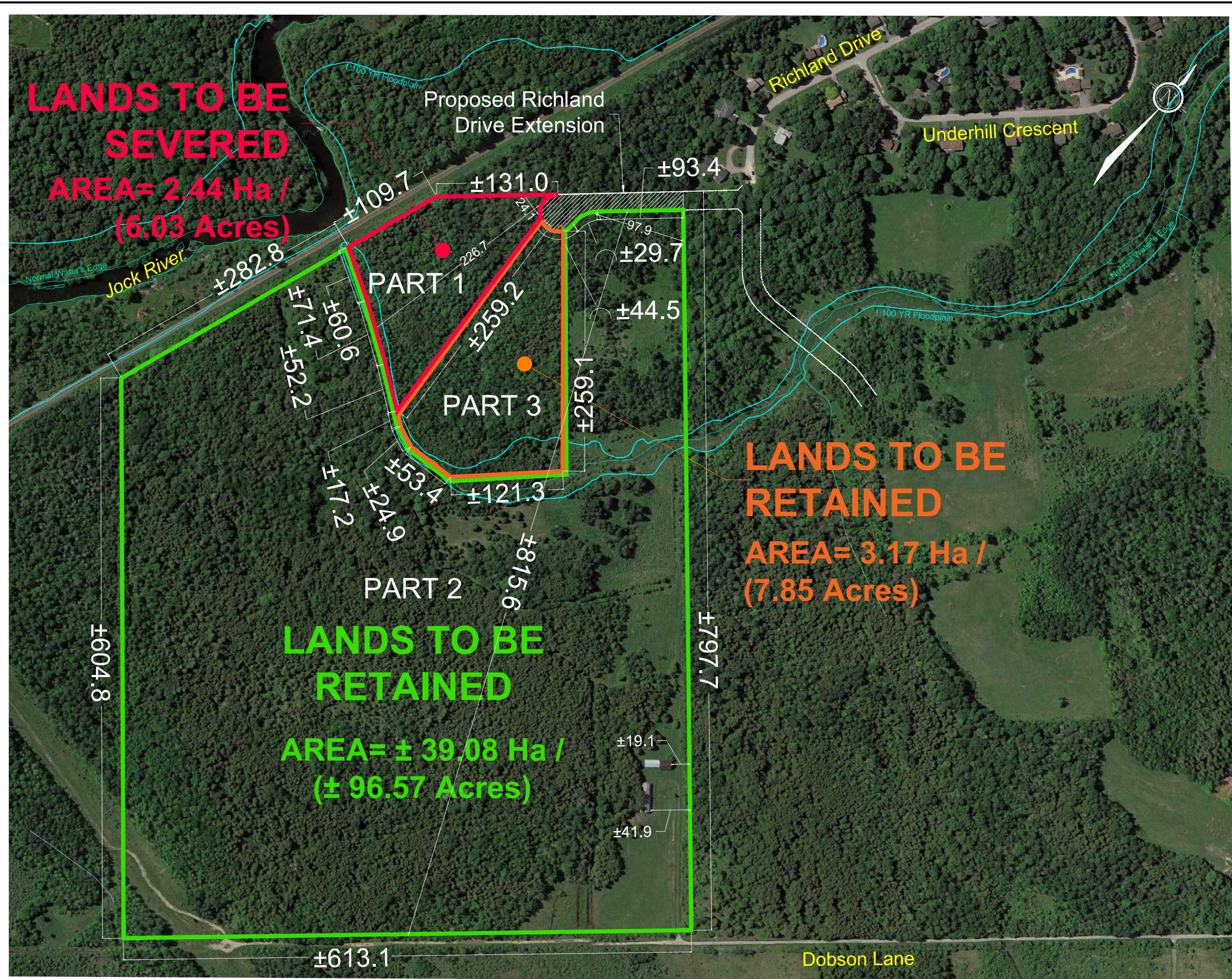
No.	REVISION	DATE	BY
2.	RE-ISSUED FOR CONSENT APPLICATION	NOV 01/22	AT
1.	ISSUED FOR CONSENT APPLICATION	MAY 06/22	TW

**NOVATECH**  
Engineers, Planners & Landscape Architects  
Suite 200, 240 Michael Cowpland Drive  
Ottawa, Ontario, Canada K2M 1P6  
Telephone: (613) 254-9643  
Facsimile: (613) 254-5857  
Website: www.novatech-eng.com

ISSUED  
NOVEMBER, 2022  
PROJECT No.  
120152  
DRAWING No.  
120152-SEV



M:\2020\120152\CAD\Planning\Figures\120152-SEV.dwg, 6335-1, Oct 27, 2022 - 4:28pm, wslloss



# CONSENT APPLICATION #1

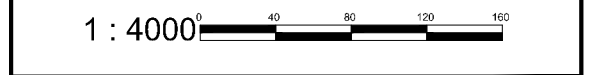
6335 DOBSON LANE

SOUTH HALF LOT 22,  
 CONCESSION 2  
 GEOGRAPHIC TOWNSHIP OF GOULBOURN  
 CITY OF OTTAWA

**Committee of Adjustment  
 Received | Reçu le**

2022-11-09

City of Ottawa | Ville d'Ottawa  
 Comité de dérogation



No.	REVISION	DATE	BY
2.	RE-ISSUED FOR CONSENT APPLICATION	NOV 01/22	AT
1.	ISSUED FOR CONSENT APPLICATION	MAY 06/22	TW

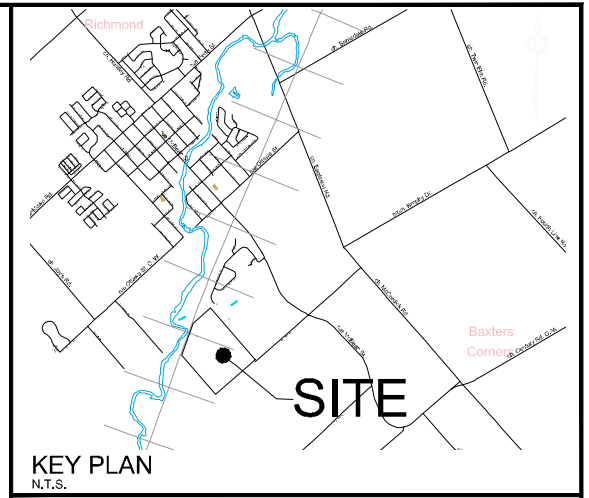
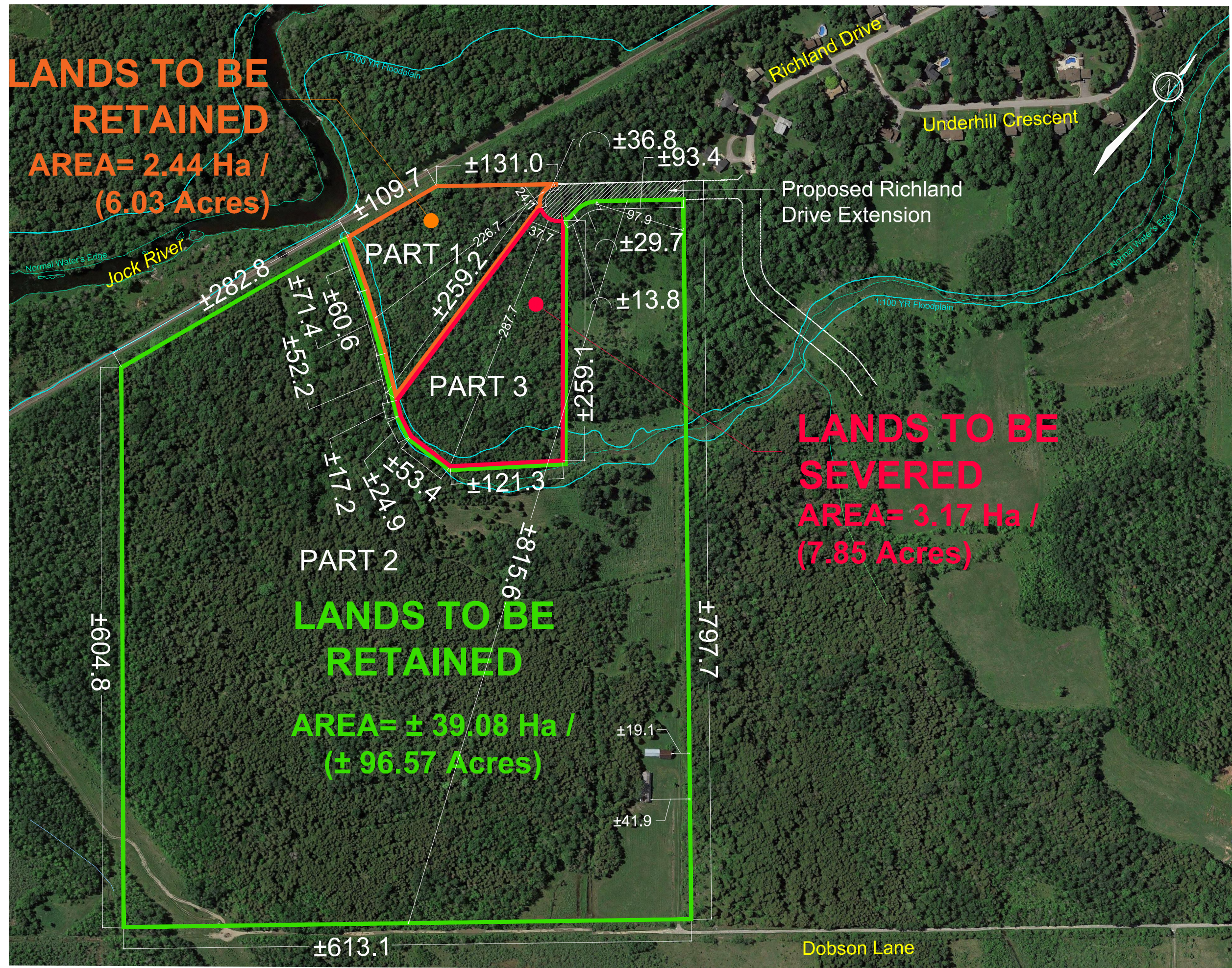
**NOVATECH**  
 Engineers, Planners & Landscape Architects  
 Suite 200, 240 Michael Cowpland Drive  
 Ottawa, Ontario, Canada K2M 1P6  
 Telephone: (613) 254-9643  
 Facsimile: (613) 254-5857  
 Website: www.novatech-eng.com

ISSUED  
 NOVEMBER, 2022

PROJECT No.  
 120152

DRAWING No.  
 120152-SEV

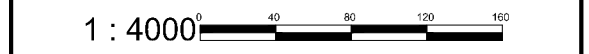




# CONSENT APPLICATION #2

6335 DOBSON LANE

SOUTH HALF LOT 22,  
CONCESSION 2  
GEOGRAPHIC TOWNSHIP OF GOULBOURN  
CITY OF OTTAWA  
**Committee of Adjustment**  
Received | Reçu le  
**2022-11-09**  
City of Ottawa | Ville d'Ottawa  
Comité de dérogation



No.	REVISION	DATE	BY
2.	RE-ISSUED FOR CONSENT APPLICATION	NOV 01/22	AT
1.	ISSUED FOR CONSENT APPLICATION	MAY 06/22	TW

**NOVATECH**  
Engineers, Planners & Landscape Architects  
Suite 200, 240 Michael Cowpland Drive  
Ottawa, Ontario, Canada K2M 1P6  
Telephone: (613) 254-9643  
Facsimile: (613) 254-5857  
Website: www.novatech-eng.com

ISSUED  
NOVEMBER, 2022

PROJECT No.  
120152

DRAWING No.  
120152-SEV

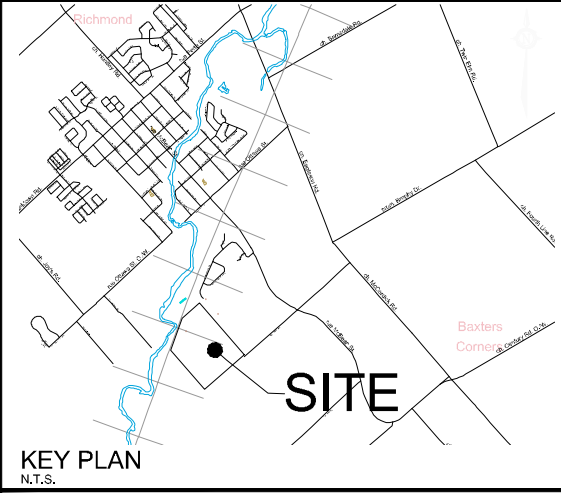
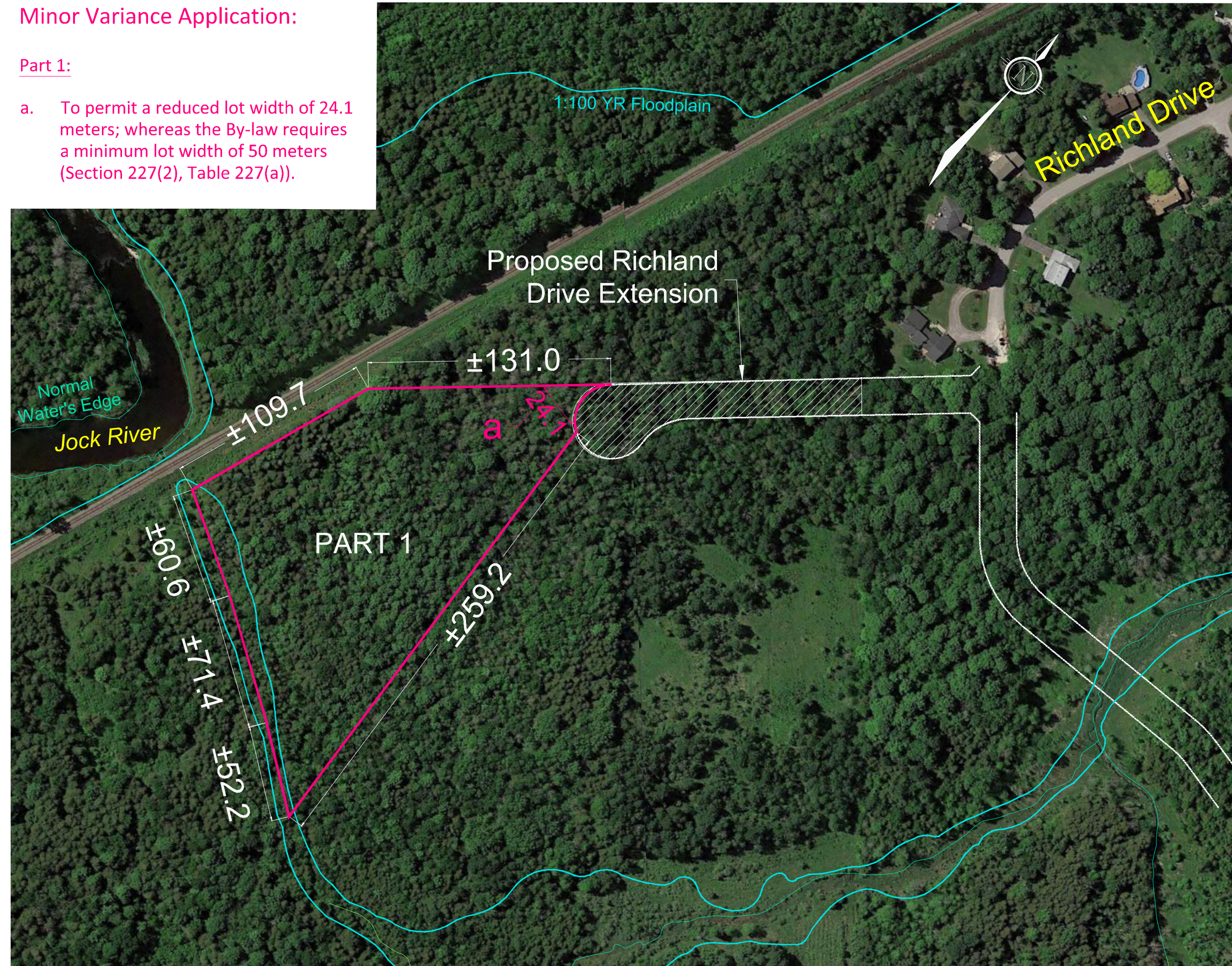
M:\2020\120152\CAD\Planning\Figures\120152-SEV.dwg, 6335-2, Nov 01, 2022 - 10:20am, wslloss



**Minor Variance Application:**

**Part 1:**

- a. To permit a reduced lot width of 24.1 meters; whereas the By-law requires a minimum lot width of 50 meters (Section 227(2), Table 227(a)).



**MINOR VARIANCE APPLICATION #1**  
 6335 DOBSON LANE

SOUTH HALF LOT 22,  
 CONCESSION 2  
 GEOGRAPHIC TOWNSHIP OF GOULBOURN  
**CITY OF OTTAWA**  
 Committee of Adjustment  
 Received | Reçu le  
 2022-11-09  
 City of Ottawa | Ville d'Ottawa  
 Comité de dérogation



No.	REVISION	DATE	BY
1.	ISSUED FOR MINOR VARIANCE APPLICATION	SEPT 16/22	AT

**NOVATECH**  
Engineers, Planners & Landscape Architects  
 Suite 200, 240 Michael Cowpland Drive  
 Ottawa, Ontario, Canada K2M 1P6  
 Telephone: (613) 254-9643  
 Facsimile: (613) 254-5857  
 Website: www.novatech-eng.com

ISSUED  
**SEPTEMBER, 2022**  
 PROJECT No.  
**120152**  
 DRAWING No.  
**120152-MV**

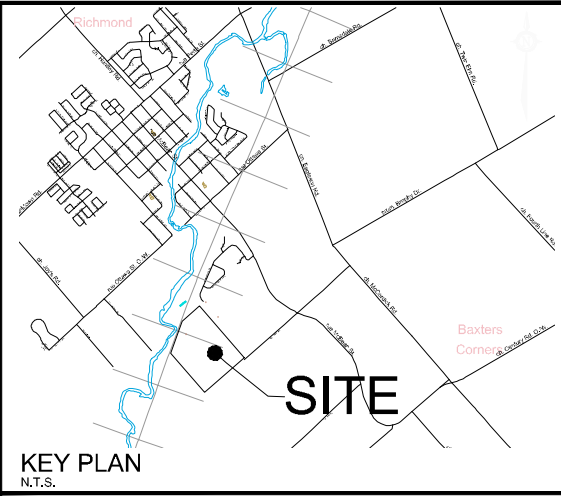
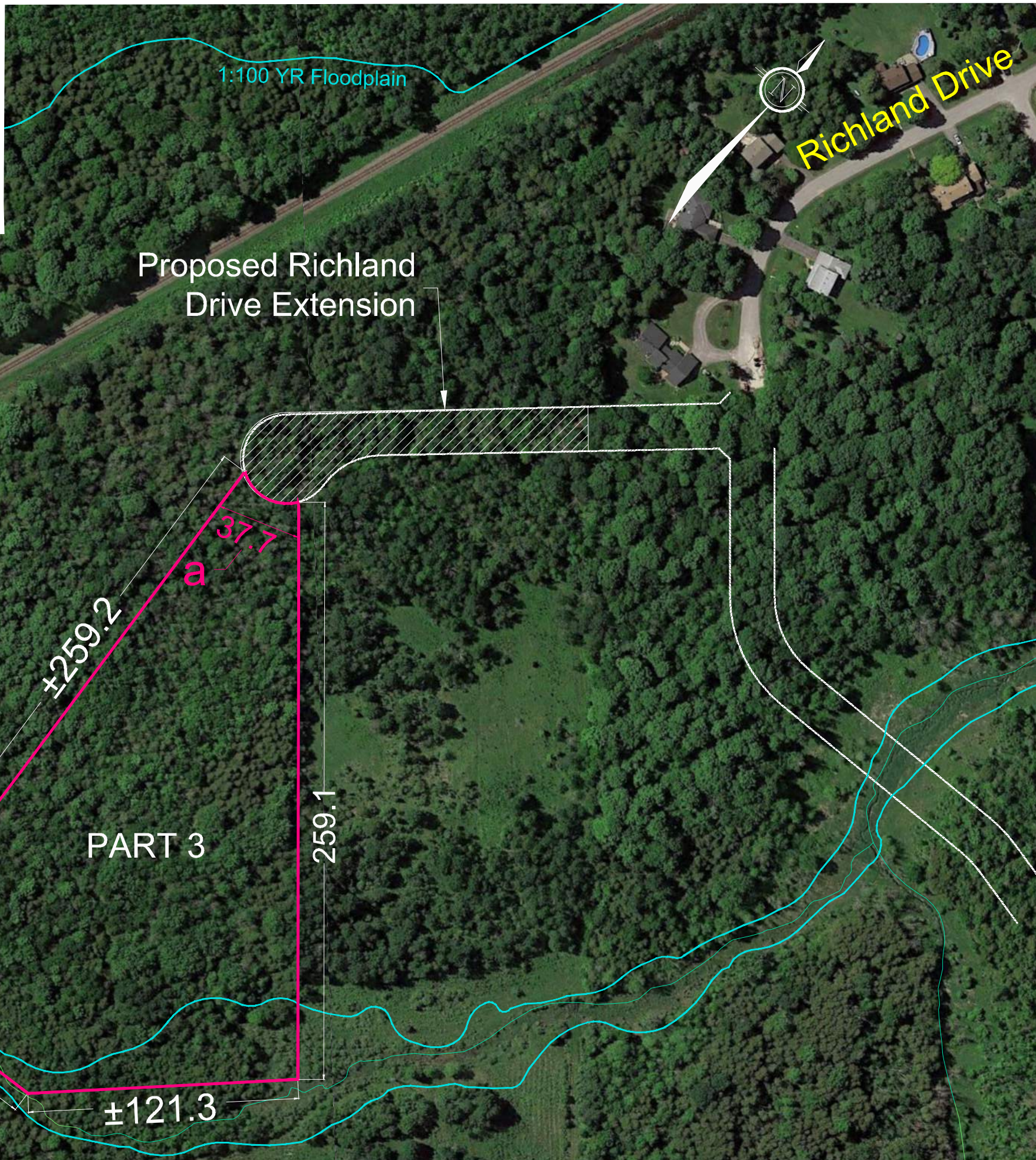
M:\2020\120152\CAD\Planning\Figures\120152-MV.dwg, 6335-1, Sep 16, 2022 - 12:09pm, wslOSS



**Minor Variance Application:**

**Part 3:**

- b. To permit a reduced lot width of 37.7 meters; whereas the By-law requires a minimum lot width of 50 meters (Section 227(2), Table 227(a)).



**MINOR VARIANCE APPLICATION**

**#2**

6335 DOBSON LANE

SOUTH HALF LOT 22,  
CONCESSION 2  
GEOGRAPHIC TOWNSHIP OF GOULBOURN

CITY OF OTTAWA  
**Committee of Adjustment**  
Received | Reçu le

2022-11-09

City of Ottawa | Ville d'Ottawa  
**Comité de dérogation**

1 : 2000


1.	ISSUED FOR MINOR VARIANCE APPLICATION	SEPT 16/22	AT
No.	REVISION	DATE	BY

**NOVATECH**  
Engineers, Planners & Landscape Architects  
Suite 200, 240 Michael Cowpland Drive  
Ottawa, Ontario, Canada K2M 1P6  
Telephone (613) 254-9643  
Facsimile (613) 254-5857  
Website www.novatech-eng.com

ISSUED  
SEPTEMBER, 2022  
PROJECT No. 120152  
DRAWING No. 120152-MV