

SCHEDULE

PART	LOT	PLAN	PIN
1			
2			
3	ALL OF 17		ALL OF 04463-0321
4			
5			
6			
7		4M-371	
8			
9	ALL OF 18		ALL OF 04463-0320
10			
11			

Parts 1 and 2: Subject to easement, Inst. OC1454845
Parts 1,3,6,8 and 11: Subject to easement, Inst.'s LT316854 & LT316855.

PLAN OF SURVEY OF
LOTS 17 AND 18
REGISTERED PLAN 4M-371
CITY OF OTTAWA

Surveyed by Annis, O'Sullivan, Vollebek Ltd.

Scale 1:200



The intended plot size of this plan is 762 mm in width by 610 mm in height when plotted at a scale of 1:200.

Metric

DISTANCES AND COORDINATES SHOWN ON THIS PLAN ARE IN METRES AND CAN BE CONVERTED TO FEET BY DIVIDING BY 0.3048.

Surveyor's Certificate

I CERTIFY THAT:
1. This survey and plan are correct and in accordance with the Surveys Act, the Surveyors Act and the Land Titles Act and the regulations made under them.
2. The survey was completed on the 18th day of October, 2022.

November 22, 2022 Date Stefan Bazar Ontario Land Surveyor

This plan of survey relates to AOLS Plan Submission Form Number: V-36323

Notes & Legend

—□—	Denotes	Survey Monument Planted
—■—	"	Survey Monument Found
SIB	"	Standard Iron Bar
SSIB	"	Short Standard Iron Bar
IB	"	Iron Bar
(WIT)	"	Witness
Meas.	"	Measured
(AOG)	"	Annis, O'Sullivan, Vollebek Ltd.
C/L	"	Centreline
(P1)	"	Registered Plan 4M-371
(P2)	"	Plan 4R-31844
(P3)	"	(1697) Plan dated February 21, 2012 (Lot 17)
(P4)	"	(1697) Plan dated February 21, 2012 (Lot 18)

Distances shown on this plan are ground distances and can be converted to grid distances by multiplying by the combined scale factor of 0.999909.

Bearings are grid, derived from Can-Net 2016 Real Time Network GPS observations on reference points A and B, shown hereon, having a bearing of N28°57'02"W and are referenced to Specified Control Points 01919750705 and 01919750705 and 01919770923, MTM Zone 9 (76°30' West Longitude) NAD-83 (original).

For comparison purposes, a rotation of 0°28'00" counter clockwise was applied to bearings on P1, P3, and P4.

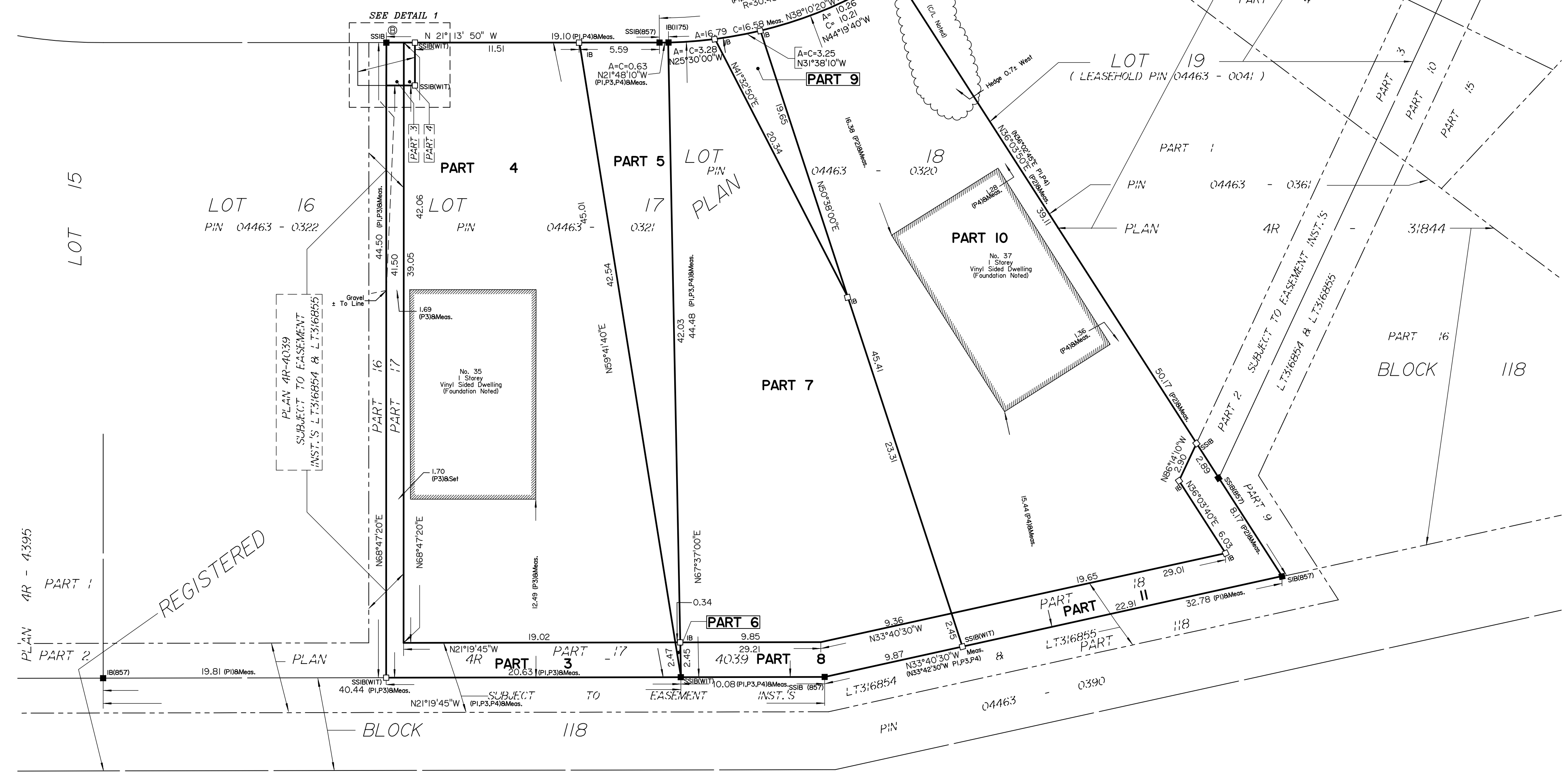
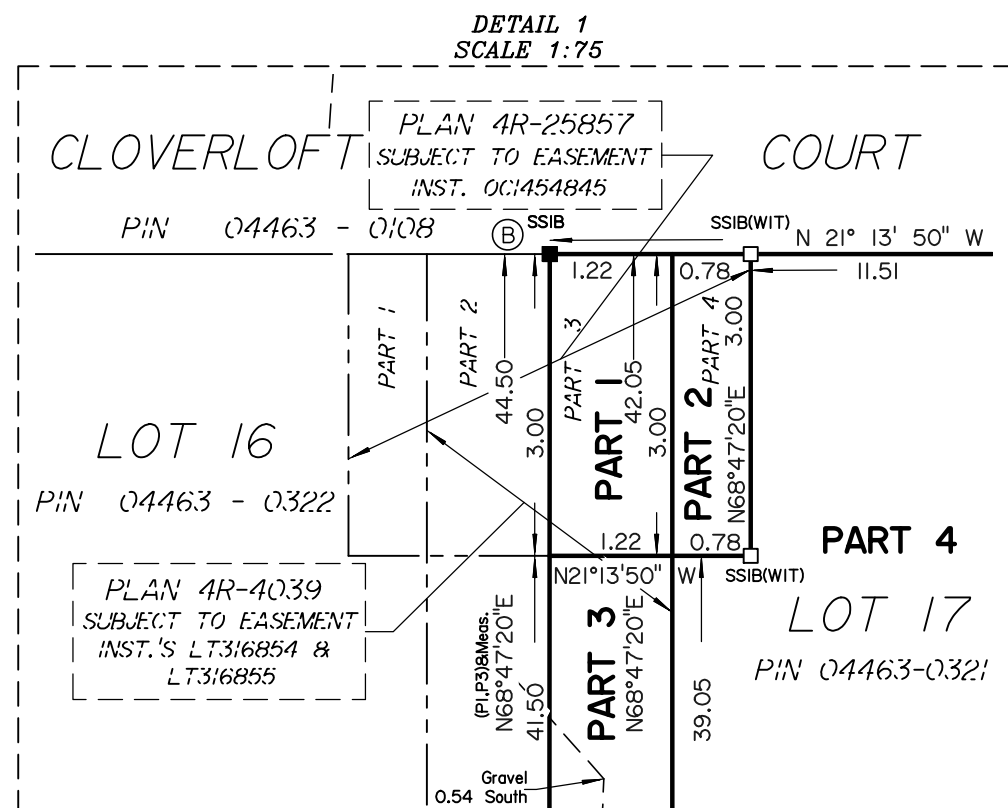
Coordinates are derived from Can-Net 2016 Real Time Network GPS observations referenced to Specified Control Points 01919750705 and 01919770923, MTM Zone 9 (76°30' West Longitude) NAD-83 (original).

Coordinate values are to urban accuracy in accordance with O. Reg. 216/10.

.01919750705	Northing	5016816.93	Eastings	360806.84
.01919770923	Northing	5013536.21	Eastings	346275.92
.Point A	Northing	5015484.98	Eastings	350697.41
.Point B	Northing	5015516.41	Eastings	350680.03

Caution: Coordinates cannot, in themselves, be used to re-establish corners or boundaries shown on this plan.

Committee of Adjustment
Received | Reçu le
2023-03-27
City of Ottawa | Ville d'Ottawa
Comité de dérogation



BLOCK 2 REGISTERED PLAN 4M - 372

PART 6, PLAN 4R - 24549