

PART 79
SR-2902
Accepted
Co-ordinates
per P2

PART 80
SR-2902

PART 81
SR-2902

PART 82
SR-2902

PART 83
SR-2902

PART 84
SR-2902

PART 85
SR-2902

PART 86
SR-2902

PART 87
SR-2902

PART 88
SR-2902

PART 89
SR-2902

PART 90
SR-2902

PART 91
SR-2902

PART 92
SR-2902

PART 93
SR-2902

PART 94
SR-2902

PART 95
SR-2902

PART 96
SR-2902

PART 97
SR-2902

PART 98
SR-2902

PART 99
SR-2902

PART 100
SR-2902

PART 101
SR-2902

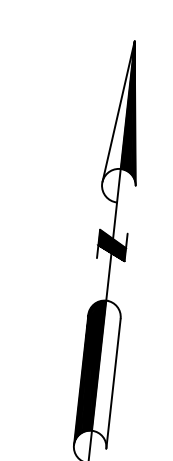
PART 102
SR-2902

SECORD AVENUE

(Formerly Laure Avenue)

(REGISTERED PLAN 527)

P.I.N. 0 4 1 4 6 -- 0 2 6 4



527

I REQUIRE THIS PLAN TO BE DEPOSITED UNDER THE LAND TITLES ACT.

PLAN 4R- RECEIVED AND DEPOSITED

DATE: _____ DATE: _____

JAMIE LESLIE
ONTARIO LAND SURVEYOR

REPRESENTATIVE FOR LAND REGISTRAR FOR THE LAND TITLES DIVISION OF OTTAWA-CARLETON NO. 4.

SCHEDULE				
PART	LOT	PLAN	PIN	AREA (Sq.m.)
1	PART OF 21	527	ALL OF 04146-0243	232.3
2				232.3

PLAN OF SURVEY OF

PART OF LOT 21 REGISTERED PLAN 527 CITY OF OTTAWA

FARLEY, SMITH & DENIS SURVEYING LTD. 2023

Scale 1: 100

Metric Note
Distances and/or coordinates on this plan are in metres and can be converted to feet by dividing by 0.3048.

Distance Note
Distances shown on this plan are ground distances and can be converted to grid distances by multiplying by the combined scale factor of 0.99994.

Bearing Note
Bearings hereon are grid bearings derived from the Can-Net Real Time Network and are referred to the Central Meridian of MTM Zone 9 (76°30' West Longitude) Nad-83 (Original).

Coordinates shown on (P2) were converted to Nad-83 (Original) using the National Transform Software Version 2.0.

For bearing comparisons, a rotation of 0°31'15" counter-clockwise was applied to bearings on P1, P3 & P4.

CO-ORDINATES WERE DERIVED FROM CAN-NET REAL TIME NETWORK OBSERVATIONS, MTM ZONE 9, N.A.D. 1983 (ORIGINAL).		
POINT ID	NORTHING	EASTING
(A)	5026850.06	369325.09
(B)	5026851.73	369340.24
01919680105	5024915.16	373971.65
019198434761	5036178.12	372436.11

CO-ORDINATES ARE MTM ZONE 9, N.A.D. 1983 (ORIGINAL), TO URBAN ACCURACY PER SEC. 14 (2) OF O.REG. 216/10, AND CANNOT, IN THEMSELVES, BE USED TO RE-ESTABLISH CORNERS OR BOUNDARIES SHOWN ON THIS PLAN.

- Notes & Legend**
- Denotes Survey Monument Planted
 - Survey Monument Found
 - SSIB Short Standard Iron Bar
 - IB Iron Bar
 - Meas Measured
 - (OU) Origin Unknown
 - (P1) Registered Plan 527
 - (P2) Plan 5R-2902
 - (P3) Plan by (1315) dated November 25, 1992 (Ref. No. 8-527)
 - (P4) Plan by (1697) dated September 25, 2018 (File No. 18-11584)
 - (P5) Plan by (1692) dated March 14, 2022 (File No. 765-21)
 - (D1) Inst. OT5939
 - (D2) Inst. OT6284
 - (D3) Inst. OT75756
 - ohw Overhead Wires
 - u/p Utility Pole
 - Ø Diameter
 - CLF Chain Link Fence
 - BF Board Fence
 - C/L Centreline
 - Deciduous Tree - The Symbol shown denotes location and trunk diameter only. Size of its' root system/overhead canopy may be smaller/larger than the symbol size depicted on this plan.
 - Coniferous Tree - The Symbol shown denotes location and trunk diameter only. Size of its' root system/overhead canopy may be smaller/larger than the symbol size depicted on this plan.

Surveyor's Certificate

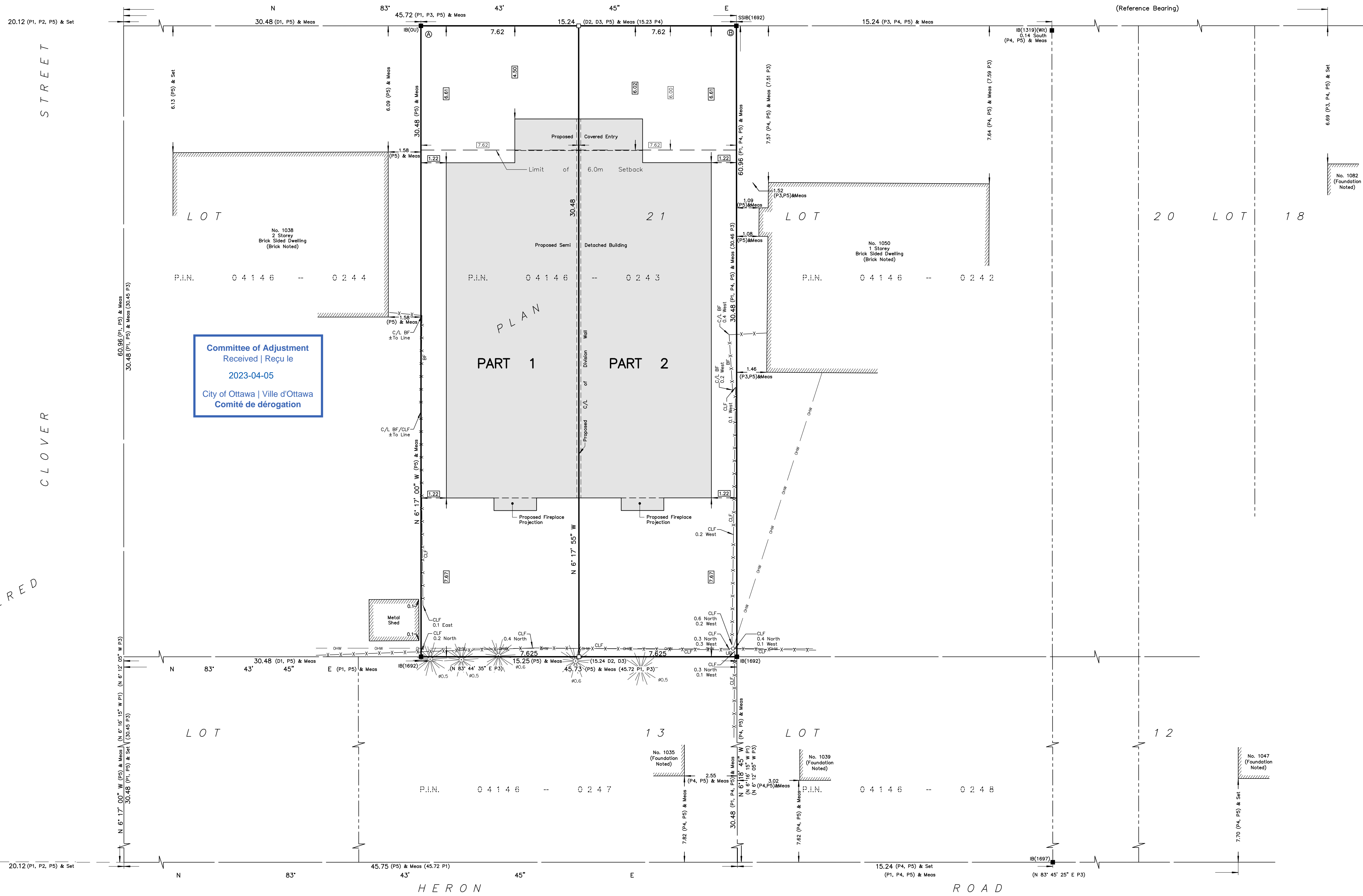
- I certify that:
- This survey and plan are correct and in accordance with the Surveys Act, the Surveyors Act and the Land Titles Act and the Regulations made under them.
 - The survey was completed on the ___ day of _____, 2023.

Date _____ Jamie Leslie
Ontario Land Surveyor

This plan of survey relates to AOLS Plan Submission Form Number V-43308
FARLEY, SMITH & DENIS SURVEYING LTD.

ONTARIO LAND SURVEYORS
CANADA LAND SURVEYORS

Unit 275, 30 COLONNADE ROAD, OTTAWA, ONTARIO K2E 7J6
TEL. (613) 727-8226 E-mail: fdsurveys@bellnet.ca



Committee of Adjustment
Received | Reçu le
2023-04-05
City of Ottawa | Ville d'Ottawa
Comité de dérogation