

- Legend**
- Denotes Survey Monument Planted
  - Survey Monument Found
  - SSIB Standard Iron Bar
  - IB Short Standard Iron Bar
  - CP Concrete Pin
  - (WIT) Witness
  - (AOG) Annis, O'Sullivan, Vollebakk Ltd.
  - Meas. Measured
  - Acc. Accepted
  - (P) Registered Plan 586
  - (P1) Plan 4R-21233
  - (P2) Plan (990), August 21, 1974
  - (P3) Plan 5R-652
  - (P4) Plan 4R-24353
  - (P5) Plan (857), November 15, 1985
  - (P6) Plan (AOG), August 28, 2008
  - (P7) Plan 4R-26183
  - (P8) Plan (AOG), January 12, 2022 (Ref File No. Z2806-21)
  - (PB) Plan (AOS), February 24, 2014
  - OP Utility Pole
  - AN Anchor
  - △ S Sign
  - CLF Chain Link Fence
  - BF Board Fence
  - PF Plastic Fence
  - G Gate
  - C/L Centreline
  - CRW Concrete Block Retaining Wall
  - Overhead Wires
  - Property Line



**Committee of Adjustment**  
 Received | Reçu le  
**2023-03-21**  
 City of Ottawa | Ville d'Ottawa  
**Comité de dérogation**

SCHEDULE				
AREA (Sq.m.)	PART	LOT	PLAN	PIN
619.5	1			
673.2	2			
61.1	3	PART OF 24	86	ALL OF 04422-0159
61.1	4			

**DRAFT PLAN OF SURVEY OF**  
**PART OF LOT 24**  
**REGISTERED PLAN 86**  
**CITY OF OTTAWA**  
 Surveyed by Annis, O'Sullivan, Vollebakk Ltd.

Scale 1: 150  
  
 The intended plot size of the plan is 762 mm in width by 457 mm in height when plotted at a scale of 1:150.

**Metric**  
 DISTANCES AND COORDINATES SHOWN ON THIS PLAN  
 ARE IN METRES AND CAN BE CONVERTED TO FEET BY  
 DIVIDING BY 0.3048.

**Surveyor's Certificate**  
 I CERTIFY THAT:  
 1. This survey and plan are correct and in accordance with the Surveys Act, the Surveyors Act and the Land Titles Act and the regulations made under them.  
 2. The survey was completed on the \_\_\_ day of \_\_\_\_\_ 2023.

Date \_\_\_\_\_ V. Andrew Sheip  
 Ontario Land Surveyor

This plan of survey relates to AOLS Plan Submission Form Number V-\_\_\_\_\_

**Notes**  
 Distances shown on this plan are ground distances and can be converted to gnd distances by multiplying by the combined scale factor of 0.9999985.

Bearings are grid, derived from Can-Net 2016 Real Time Network GPS observations on reference points A and B, shown hereon, having a bearing of N79°05'20"W and are referenced to Specified Control Points 01919680184 and 019198434761, MTM Zone 9 (78°30' West Longitude) NAD-83 (original).

For bearing comparisons, a rotation of 0°03'20" counter-clockwise was applied to bearings on plans (P1) and (P5).

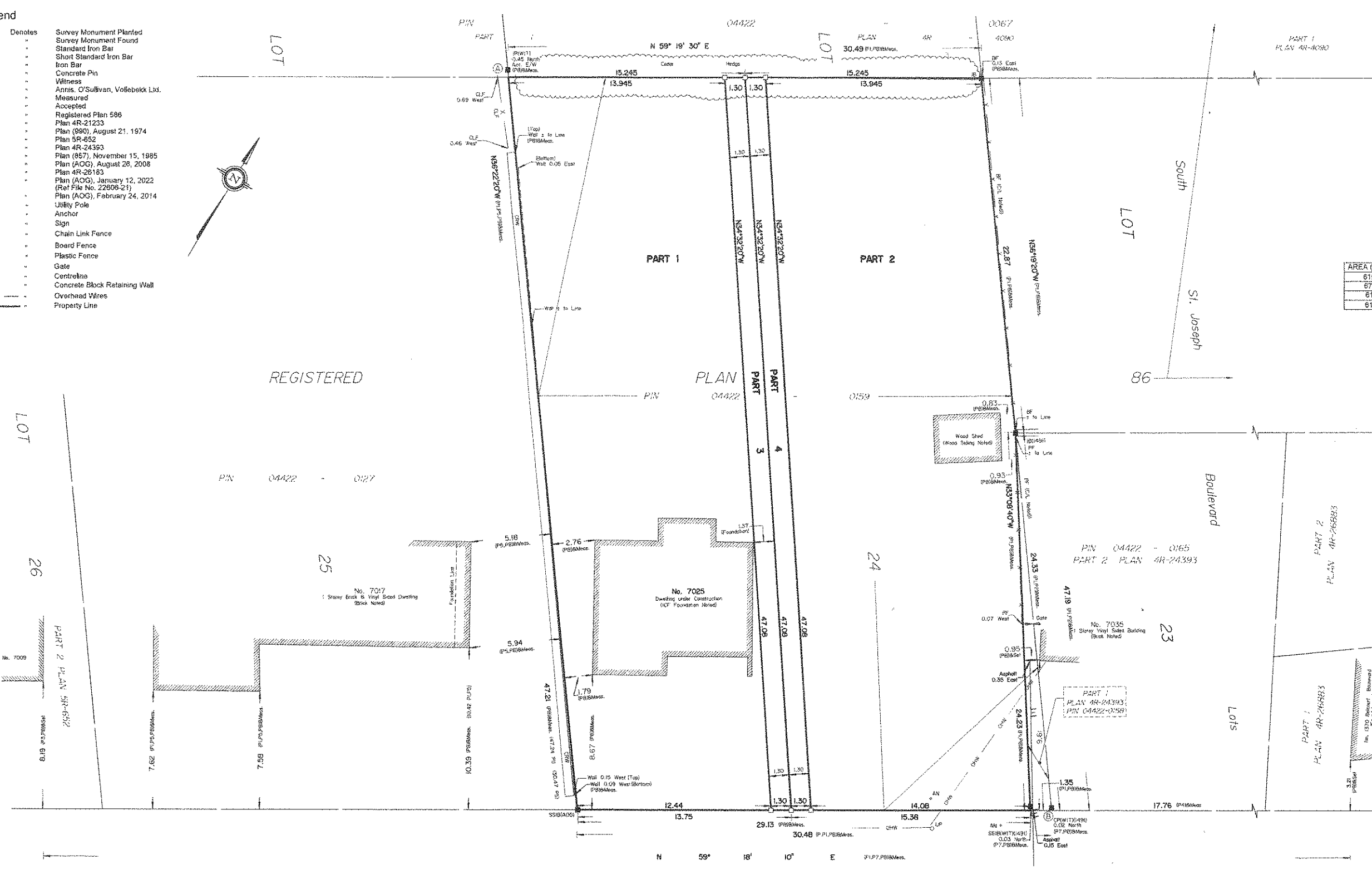
Coordinates are derived from Can-Net 2016 Real Time Network GPS observations referenced to Specified Control Points 01919680184 and 019198434761, MTM Zone 9 (78°30' West Longitude) NAD-83 (original).

Coordinate values are to urban accuracy in accordance with O. Reg. 216/10.

.01919680184	Northing	5040610.16	Eastings	384736.56
.019198434761	Northing	5036178.12	Eastings	372436.11
.Point A	Northing	5037218.21	Eastings	381209.89
.Point B	Northing	5037195.75	Eastings	381264.09

Caution: Coordinates cannot, in themselves, be used to re-establish corners or boundaries shown on this plan.

**ANNIS, O'SULLIVAN, VOLLEBEKK LTD.**  
 14 Concourse Gate, Suite 500  
 Nepean, Ont. K2E 7S6  
 Phone: (613) 727-0650 / Fax: (613) 727-1079  
 Email: [info@annisov.com](mailto:info@annisov.com)



**NOTRE - DAME STREET**  
 Road Allowance Between Concessions 1 and 2 (Ottawa Front) (Gloucester)  
 PIN 04422 0159