

LOT 931 REGISTERED PLAN M-29 CITY OF OTTAWA

FARLEY, SMITH & DENIS SURVEYING LTD. 2022

Scale 1: 100 0 2.5 5 7.5 10 metres

Metric Note Distances on this plan are in metres and can be converted to feet by dividing by 0.3048.

Distance Note Distances shown on this plan are ground distances and can be converted to grid distances by multiplying by the combined scale factor of 0.99994.

Bearing Note Bearings hereon are grid bearings derived from the Can-Net Real Time Network and are referred to the Central Meridian of MTM Zone 9 (76°30' West Longitude) Nad-83 (Original).

For bearing comparisons, a rotation of 4°48'10" counter-clockwise was applied to bearings on P1.

For bearing comparisons, a rotation of 0°24'40" counter-clockwise was applied to bearings on P2, P3 & P4.

Elevation Notes 1. Elevations shown are geodetic and are referred to Geodetic Datum CGVD-1928 :1978. (Monument No. 19680005) 2. It is the responsibility of the user of this information to verify that the job benchmark has not been altered or disturbed and that its relative elevation and description agrees with the information shown on this drawing.

Utility Notes 1. This drawing cannot be accepted as acknowledging all of the utilities and it will be the responsibility of the user to contact the respective utility authorities for confirmation. 2. Only visible surface utilities were located. 3. Underground utility data derived from City of Ottawa utility sheet reference: E-02-24, E-02-25, 5831p&1, 5831p&2 & A84-1. 4. Sanitary and storm sewer grades and inverts were derived from: Field measurement. 5. A field location of underground plant by the pertinent utility authority is mandatory before any work involving breaking ground, probing, excavating etc.

Notes & Legend Denotes: Survey Monument Planted, Survey Monument Found, Standard Iron Bar, Short Standard Iron Bar, Iron Bar, Witness, Measured, Registered Plan M-29, Plan 4R-22226, Plan by (AOG) dated August 24, 1992 (Job No. 0-263-92), Plan by (1692) dated May 26, 2005 (File No. 146-05), Plan by (725) dated March 8, 1978 (Ref. No. 49-78), Plan by (857) dated August 24, 1984 (Ref. No. 236-M-29), Maintenance Hole (Sanitary), Maintenance Hole (Sanitary), Valve Chamber (Watermain), Undergound Storm Sewer, Undergound Sanitary Sewer, Undergound Water, Undergound Gas, Overhead Wires, Utility Pole, Light Standard, Fire Hydrant, Water Valve, Gas Meter, Air Conditioner, Diameter, Board Fence, Stone Retaining Wall, Invert, Top of Grate, Underside of Eave, Top of Foundation, Centreline, Location of Elevations, Top of Concrete Curb/Registered Plan Elevation, Property Line, Deciduous Tree - The Symbol shown denotes location and trunk diameter only. Size of its' root system/overhead canopy may be smaller/larger than the symbol size depicted on this plan. Coniferous Tree - The Symbol shown denotes location and trunk diameter only. Size of its' root system/overhead canopy may be smaller/larger than the symbol size depicted on this plan.

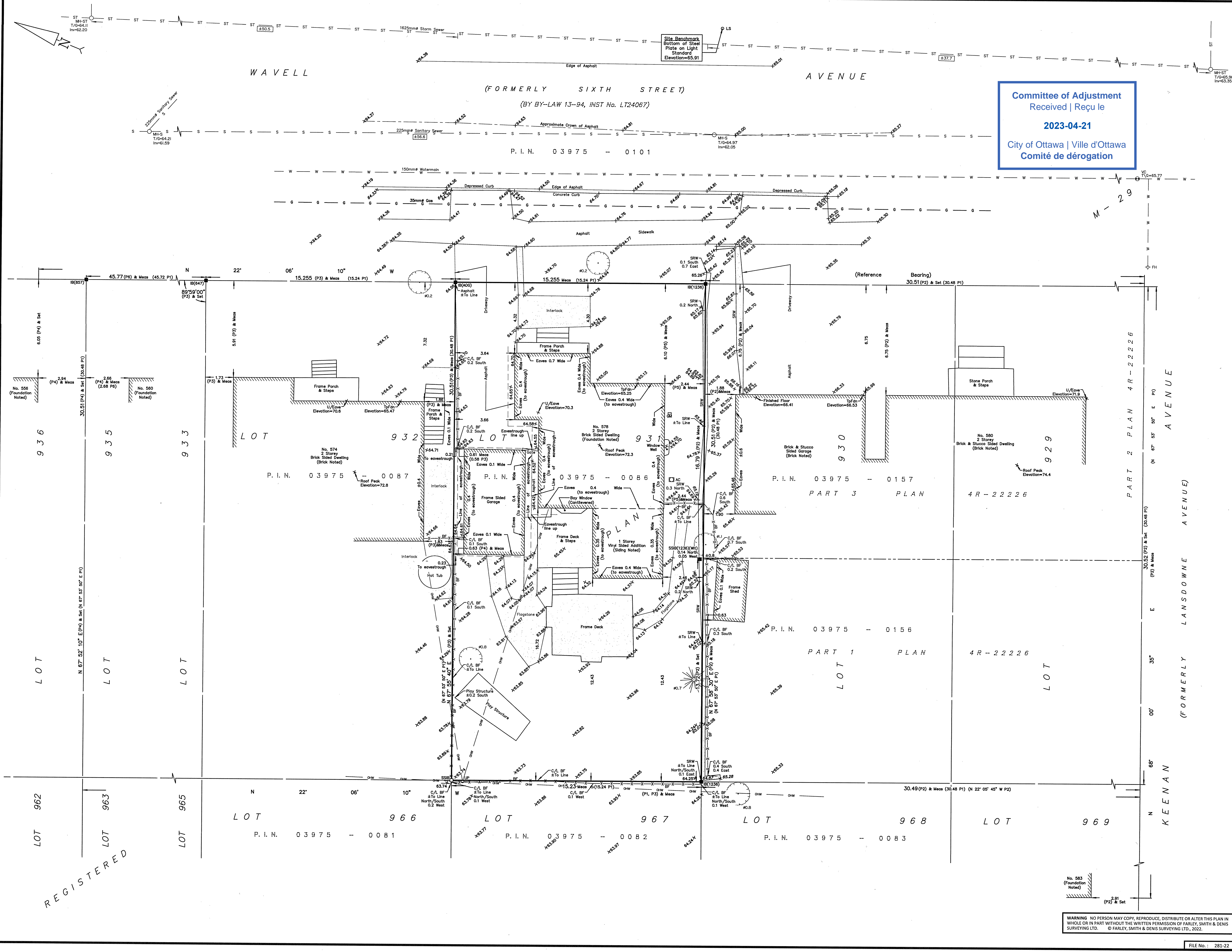
Site Area=465.0 sq.m.

REVISION NOTE: This plan was revised to added remaining eave dimensions to plan. 03-31-23 Date Jamie Leslie Ontario Land Surveyor

Surveyor's Certificate I certify that: 1. This survey and plan are correct and in accordance with the Surveys Act, the Surveys Act and the Regulations made under them. 2. The survey was completed on the 7th day of July, 2022. July 18/22 Date Jamie Leslie Ontario Land Surveyor

This plan of survey relates to AOLS Plan Submission Form Number V-28523 FARLEY, SMITH & DENIS SURVEYING LTD.

ONTARIO LAND SURVEYORS CANADA LAND SURVEYORS Unit 275, 30 COLONNADE ROAD, OTTAWA, ONTARIO K2E 7J6 TEL: (613) 727-8226 E-mail: fdsurveys@bellnet.ca



Committee of Adjustment Received | Reçu le 2023-04-21 City of Ottawa | Ville d'Ottawa Comité de dérogation

WARNING: NO PERSON MAY COPY, REPRODUCE, DISTRIBUTE OR ALTER THIS PLAN IN WHOLE OR IN PART WITHOUT THE WRITTEN PERMISSION OF FARLEY, SMITH & DENIS SURVEYING LTD. © FARLEY, SMITH & DENIS SURVEYING LTD., 2022.