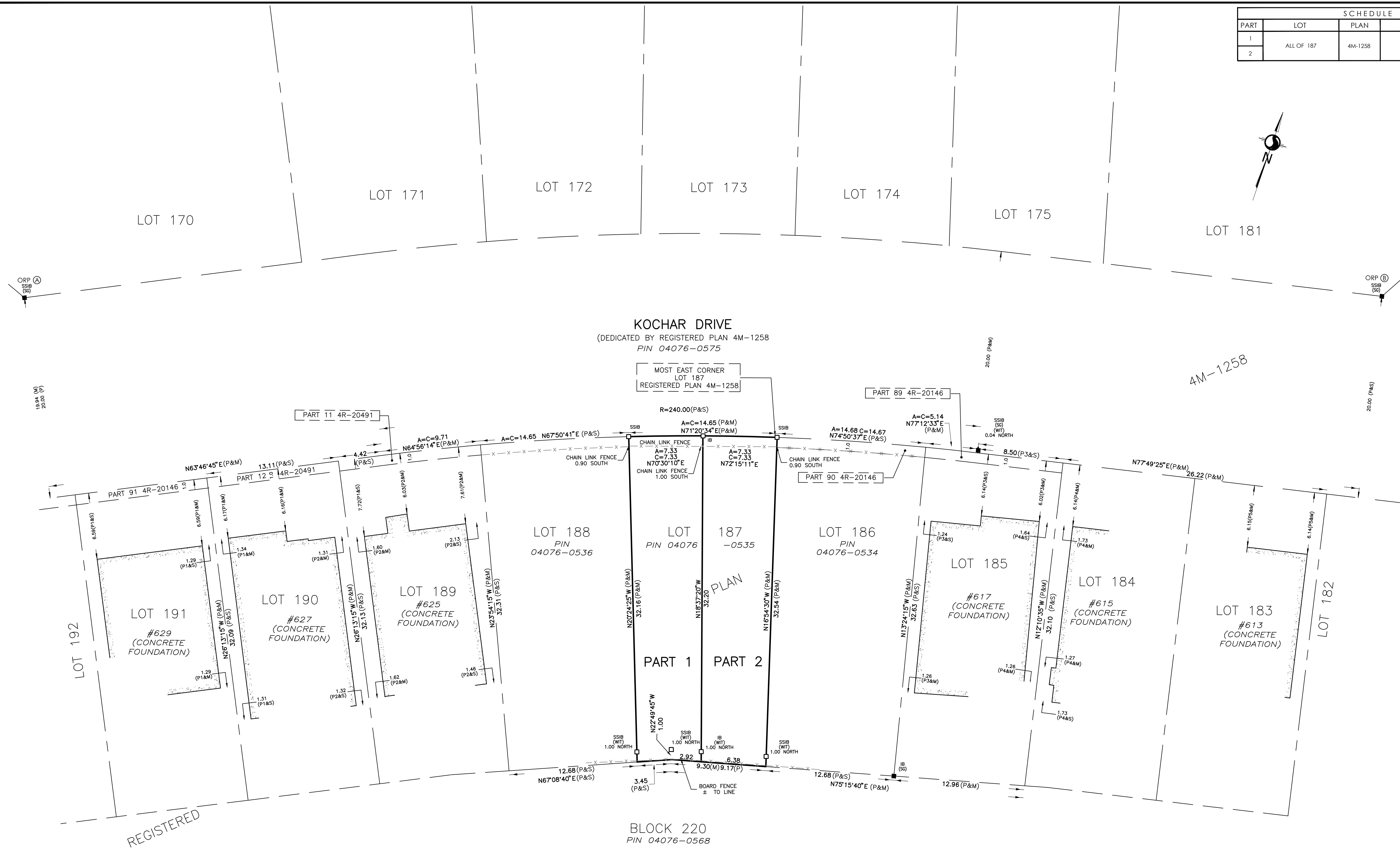


13 February 2023, 11:17 AM

| SCHEDULE | | | |
|----------|------------|---------|-------------------|
| PART | LOT | PLAN | PIN |
| 1 | ALL OF 187 | 4M-1258 | ALL OF 04076-0535 |
| 2 | | | |

PLAN 4R-35299
 Received and deposited
February 22nd, 2023
Tom Berube
 Representative for the
 Land Registrar for the
 Land Titles Division of
 Ottawa-carleton (No.4)



PLAN OF SURVEY OF
LOT 187
REGISTERED PLAN 4M-1258
 (GEOGRAPHIC TOWNSHIP OF NEPEAN)
 CITY OF OTTAWA

Scale 1:200

Stantec Geomatics Ltd.
 THE INTENDED PLOT SIZE OF THIS PLAN IS 863mm IN WIDTH BY 558mm IN HEIGHT WHEN PLOTTED AT A SCALE OF 1:200.

METRIC CONVERSION
 DISTANCES AND COORDINATES SHOWN ON THIS PLAN ARE IN METRES AND CAN BE CONVERTED TO FEET BY DIVIDING BY 0.3048

LEGEND

| | | |
|--------|------------------------------------|-----------------|
| ■ | DENOTES | FOUND MONUMENTS |
| □ | SET MONUMENTS | |
| IB | IRON BAR | |
| IBP | ROUND IRON BAR | |
| SIB | STANDARD IRON BAR | |
| SSIB | SHORT STANDARD IRON BAR | |
| CC | CUT CROSS | |
| CP | CONCRETE PIN | |
| WIT | WITNESS | |
| PIN | PROPERTY IDENTIFICATION NUMBER | |
| M/MEAS | MEASURED | |
| PROP | PROPORTIONED | |
| OU | ORIGIN UNKNOWN | |
| SG | STANTEC GEOMATICS LTD. | |
| P | REGISTERED PLAN 4M-1258 | |
| P1 | PLAN BY SG DATED FEBRUARY 13, 2006 | |
| P2 | PLAN BY SG DATED JANUARY 24, 2007 | |
| P3 | PLAN BY SG DATED DECEMBER 22, 2005 | |
| P4 | PLAN BY SG DATED NOVEMBER 6, 2007 | |
| P5 | PLAN BY FSD DATED JULY 20, 2015 | |

GRID SCALE CONVERSION
 DISTANCES ARE GROUND AND CAN BE CONVERTED TO GRID BY MULTIPLYING BY THE COMBINED SCALE FACTOR OF 0.999949.

BEARING NOTE
 BEARINGS ARE GRID, DERIVED FROM THE CAN-NET VRS NETWORK OBSERVATIONS ON NCC HORIZONTAL CONTROL MONUMENTS 19773035 AND 19680191, CENTRAL MERIDIAN, 76°30' WEST LONGITUDE MTM ZONE 9, NAD83 (ORIGINAL).

19773035 N:5006060.42 E:324888.04
 19680191 N:5033564.26 E:388064.94

SURVEYOR'S CERTIFICATE
 I CERTIFY THAT:
 1. THIS SURVEY AND PLAN ARE CORRECT AND IN ACCORDANCE WITH THE SURVEYS ACT, THE SURVEYORS ACT AND THE LAND TITLES ACT AND THE REGULATIONS MADE UNDER THEM.
 2. THE SURVEY WAS COMPLETED ON THE 6th DAY OF FEBRUARY, 2023.

February 13, 2023
 DATE

 R. G. BENNETT
 ONTARIO LAND SURVEYOR

THIS PLAN OF SURVEY RELATES TO AOLS PLAN SUBMISSION FORM NUMBER V-39223.

Stantec Geomatics Ltd.
 CANADA LANDS SURVEYORS
 ONTARIO LAND SURVEYORS
 1331 CLYDE AVENUE, SUITE 300
 OTTAWA, ONTARIO, K2C 3G4
 TEL: 613.722.4420
 stantec.com

DRAWN: GS CHECKED: CK P.M.: AK FIELD: WC PROJECT No.: 161614674-114

OBSERVED REFERENCE POINTS DERIVED FROM THE CAN-NET VRS NETWORK GPS OBSERVATIONS ON NCC HORIZONTAL CONTROL MONUMENTS 19773035 AND 19680191, CENTRAL MERIDIAN, 76°30' WEST LONGITUDE MTM ZONE 9, NAD83 (ORIGINAL). COORDINATES TO URBAN ACCURACY PER SEC. 14(2) OF O. REG. 216/10

| POINT ID | NORTHING | EASTING |
|----------|------------|-----------|
| Ⓐ | 5024428.99 | 367747.44 |
| Ⓑ | 5024479.40 | 367874.19 |

COORDINATES CANNOT, IN THEMSELVES, BE USED TO RE-ESTABLISH CORNERS OR BOUNDARIES SHOWN ON THIS PLAN.

Committee of Adjustment
 Received | Reçu le
 2023-04-04
 City of Ottawa | Ville d'Ottawa
 Comité de dérogation