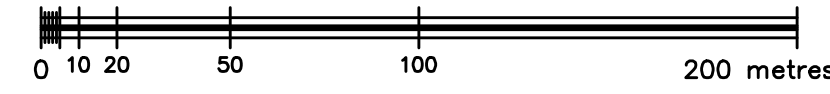
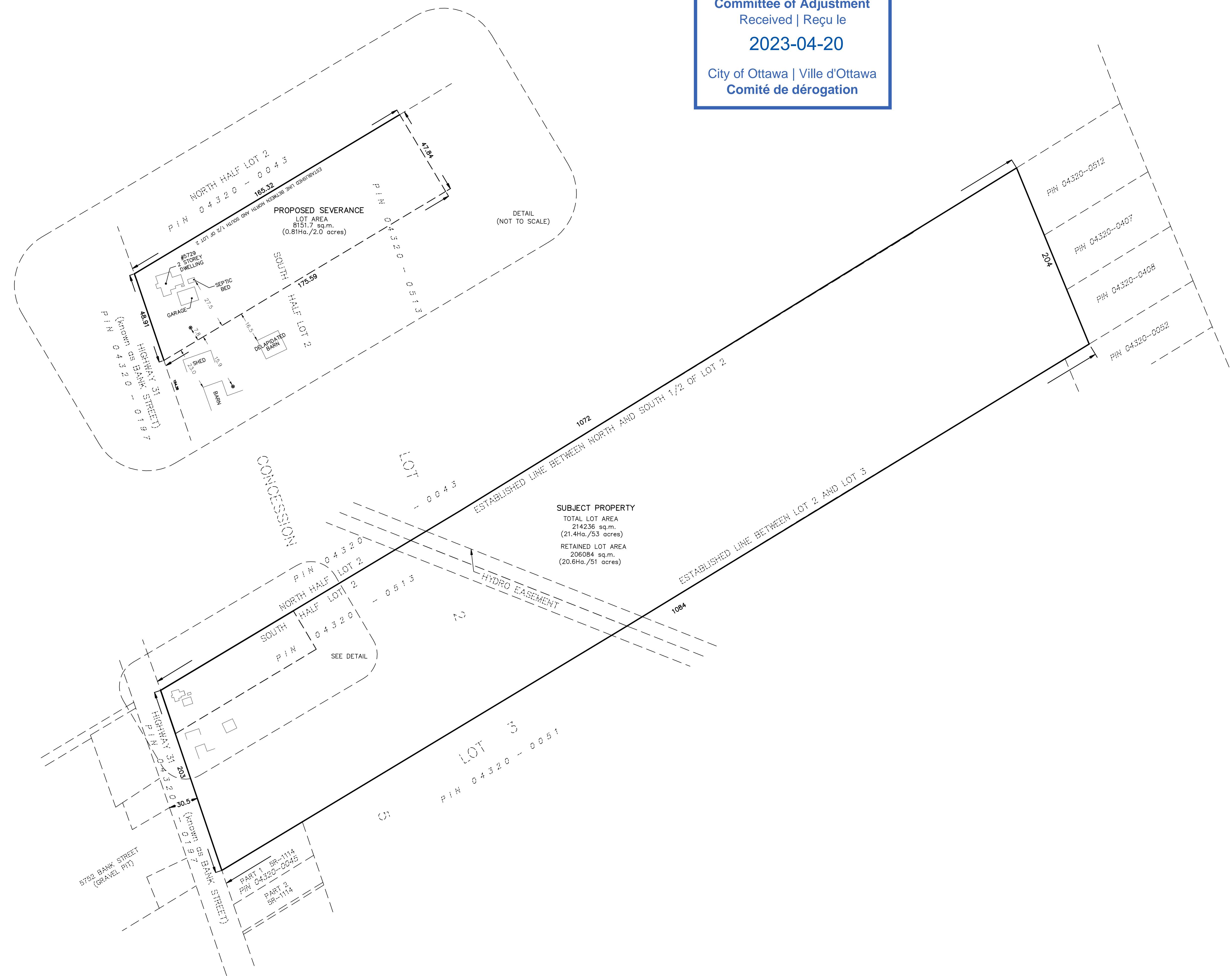


METRIC
 DISTANCES AND COORDINATES SHOWN ON THIS PLAN ARE IN METRES
 AND CAN BE CONVERTED TO FEET BY DIVIDING BY 0.3048

Committee of Adjustment
 Received | Reçu le
2023-04-20
 City of Ottawa | Ville d'Ottawa
 Comité de dérogation

SKETCH OF
 LOT
 REGISTERED PLAN
 CITY OF OTTAWA
 SCALE 1 : 2000

 FAIRHALL, MOFFATT & WOODLAND LIMITED
 ONTARIO LAND SURVEYORS



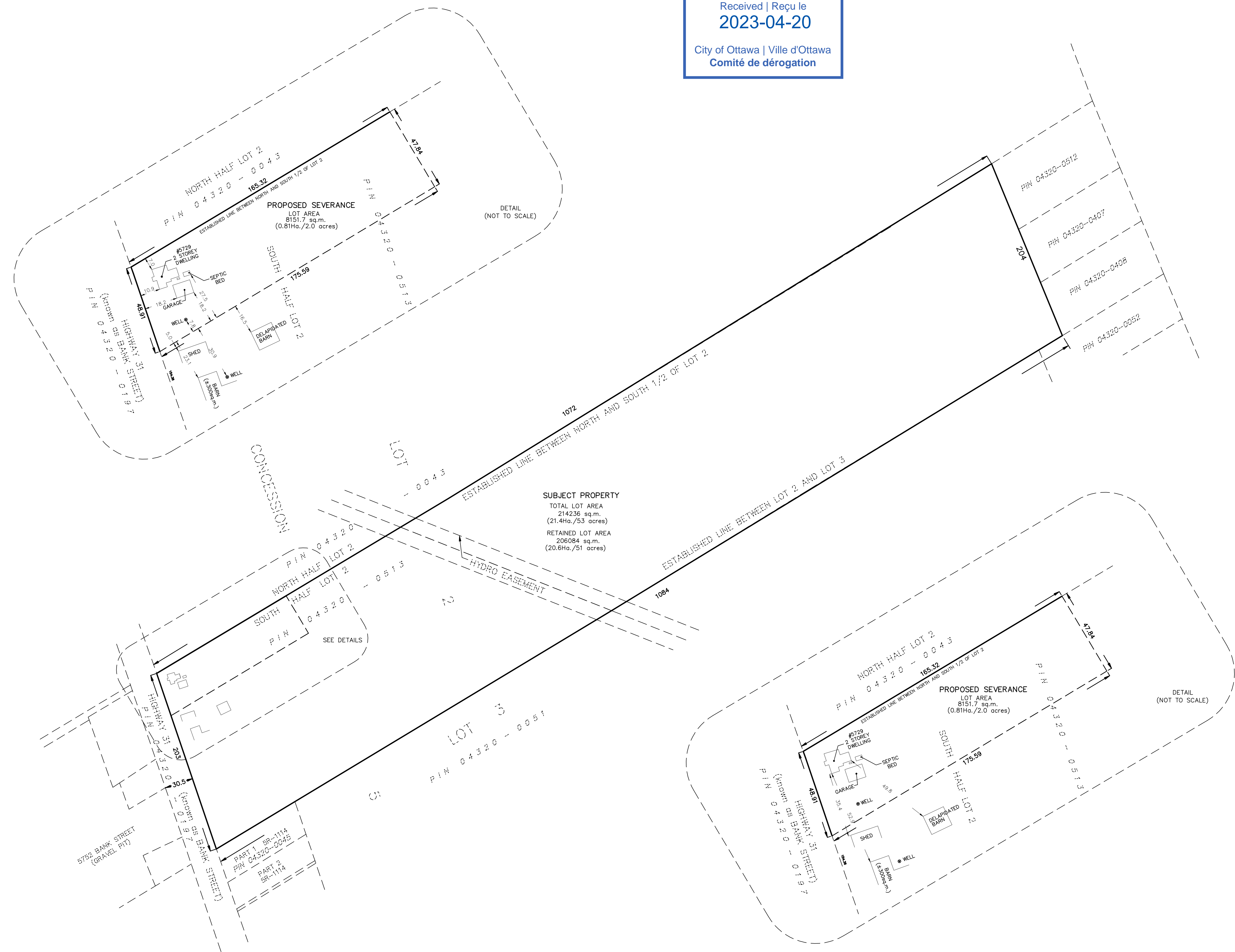
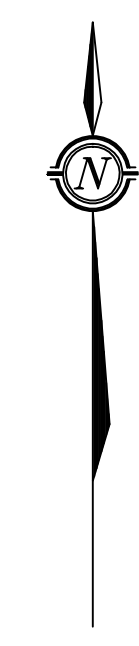
NOTES
 1. DISTANCES ARE COMPILED FROM PLANS 4R-8562 AND 4R-9902 AND GEOTTAWA
 2. DISTANCES AND AREAS ARE APPROXIMATE AND SUBJECT TO SURVEY.

Fairhall Moffatt & Woodland LIMITED ONTARIO LAND SURVEYORS Surveying and Land Information Services 100-600 TERRY FOX DRIVE, MANAKA, ONTARIO K2L 4B6 TEL: (613) 591-2580 FAX: (613) 591-1495 www.fmw.on.ca		JOB No. AB16400
		REFERENCE No. •

S:\0205\AB16400\DWG\ob164_sk.dwg (kg)

METRIC
 DISTANCES AND COORDINATES SHOWN ON THIS PLAN ARE IN METRES
 AND CAN BE CONVERTED TO FEET BY DIVIDING BY 0.3048

Committee of Adjustment
 Received | Reçu le
2023-04-20
 City of Ottawa | Ville d'Ottawa
 Comité de dérogation



- NOTES**
1. DISTANCES ARE COMPILED FROM PLANS 4R-8562 AND 4R-9902 AND GEO-OTTAWA.
 2. DISTANCES AND AREAS ARE APPROXIMATE AND SUBJECT TO SURVEY.

SKETCH OF
 PART OF LOT 2
 CONCESSION 5
 TOWNSHIP OF OSGOODE
 CITY OF OTTAWA
 SCALE 1 : 2000
 0 10 20 50 100 200 metres
FAIRHALL, MOFFATT & WOODLAND LIMITED
 ONTARIO LAND SURVEYORS

Fairhall Moffatt & Woodland LIMITED ONTARIO LAND SURVEYORS <i>Surveying and Land Information Services</i> 100-600 TERRY FOX DRIVE, MANAKA, ONTARIO K2L 4B6 TEL: (613) 591-2580 FAX: (613) 591-1495 www.fmw.on.ca		JOB No. AB16400
		REFERENCE No. 152 - 5 OSGOODE
		OTTAWA
		5 \ JOSS \ AB16400 \ DWG \ ob164_sk.dwg (kg)

Committee of Adjustment
Revised
APR 27 2023

City of Ottawa

PLAN PREPARED FOR
COMMITTEE OF ADJUSTMENT
PURPOSES JULY 8, 2021

SCHEDULE		
PART	LOT	CONCESSION
1	PART OF 2	5

I REQUIRE THIS PLAN TO BE DEPOSITED UNDER THE LAND TILES ACT.	PLAN 4R-- RECEIVED AND DEPOSITED
DATE -----	GATE -----
-----	-----
REPRESENTATIVE FOR THE LAND TILES DIVISION OF OTTAWA - CARLETON (N° 4)	-----

PLAN OF SURVEY OF
PART OF LOT 2
CONCESSION 5
TOWNSHIP OF OSGOODE
CITY OF OTTAWA

SCALE 1:1500
0 10 20 30 METERS
THE APPROX. PLOT SIZE OF THIS PLAN IS 900m x 900m IN WHOLE BY 600m x 900m IN VERTICAL PLOTS OF A SCALE OF 1:500.
FAIRHALL, MOFFATT & WOODLAND LIMITED
ONWARD LAND SURVEYORS

COORDINATES WERE DERIVED FROM REAL TIME NETWORK OBSERVATIONS (RTKINETS) WITH ZENITH R. WOODS ORIGINAL. COORDINATES HAVE BEEN DETERMINED TO AN URBAN ACCURACY IN ACCORDANCE WITH SECTION 14(3) OF OREG 316/10.

POINT ID	NORTHING	EASTING
1	85817.00	65172.00
2	85817.00	65172.00
3	85817.00	65172.00
4	85817.00	65172.00
5	85817.00	65172.00
6	85817.00	65172.00
7	85817.00	65172.00
8	85817.00	65172.00
9	85817.00	65172.00
10	85817.00	65172.00
11	85817.00	65172.00
12	85817.00	65172.00
13	85817.00	65172.00
14	85817.00	65172.00
15	85817.00	65172.00
16	85817.00	65172.00
17	85817.00	65172.00
18	85817.00	65172.00
19	85817.00	65172.00
20	85817.00	65172.00
21	85817.00	65172.00
22	85817.00	65172.00
23	85817.00	65172.00
24	85817.00	65172.00
25	85817.00	65172.00
26	85817.00	65172.00
27	85817.00	65172.00
28	85817.00	65172.00
29	85817.00	65172.00
30	85817.00	65172.00
31	85817.00	65172.00
32	85817.00	65172.00
33	85817.00	65172.00
34	85817.00	65172.00
35	85817.00	65172.00
36	85817.00	65172.00
37	85817.00	65172.00
38	85817.00	65172.00
39	85817.00	65172.00
40	85817.00	65172.00
41	85817.00	65172.00
42	85817.00	65172.00
43	85817.00	65172.00
44	85817.00	65172.00
45	85817.00	65172.00
46	85817.00	65172.00
47	85817.00	65172.00
48	85817.00	65172.00
49	85817.00	65172.00
50	85817.00	65172.00
51	85817.00	65172.00
52	85817.00	65172.00
53	85817.00	65172.00
54	85817.00	65172.00
55	85817.00	65172.00
56	85817.00	65172.00
57	85817.00	65172.00
58	85817.00	65172.00
59	85817.00	65172.00
60	85817.00	65172.00
61	85817.00	65172.00
62	85817.00	65172.00
63	85817.00	65172.00
64	85817.00	65172.00
65	85817.00	65172.00
66	85817.00	65172.00
67	85817.00	65172.00
68	85817.00	65172.00
69	85817.00	65172.00
70	85817.00	65172.00
71	85817.00	65172.00
72	85817.00	65172.00
73	85817.00	65172.00
74	85817.00	65172.00
75	85817.00	65172.00
76	85817.00	65172.00
77	85817.00	65172.00
78	85817.00	65172.00
79	85817.00	65172.00
80	85817.00	65172.00
81	85817.00	65172.00
82	85817.00	65172.00
83	85817.00	65172.00
84	85817.00	65172.00
85	85817.00	65172.00
86	85817.00	65172.00
87	85817.00	65172.00
88	85817.00	65172.00
89	85817.00	65172.00
90	85817.00	65172.00
91	85817.00	65172.00
92	85817.00	65172.00
93	85817.00	65172.00
94	85817.00	65172.00
95	85817.00	65172.00
96	85817.00	65172.00
97	85817.00	65172.00
98	85817.00	65172.00
99	85817.00	65172.00
100	85817.00	65172.00

COORDINATES CANNOT BE REVERSED BE USED TO RE-ESTABLISH CORNERS OR BOUNDARIES SHOWN ON THIS PLAN.

- NOTES**
- BEARINGS HEREIN ARE REFERRED TO AND ARE REFERRED TO THE NEAREST CORNER OF HIGHWAY 31 AS SHOWN ON DEPARTMENT OF HIGHWAYS (OSGOODE) PLAN P-2148-6, HAVING A BEARING OF N18°43'00"W.
 - BEARINGS CAN BE CONVERTED TO GRID BY APPLYING AN ANGLE EQUAL TO 10°00'00" CLOCKWISE.
 - DISTANCES AND GROUNDS CAN BE CONVERTED TO GRID BY MULTIPLYING BY THE CORRECTED SCALE FACTOR 0.999997.

- LEGEND**
- - SURVEY MONUMENT SET
 - - SURVEY MONUMENT FOUND
 - ⊞ - STANDARD IRON BAR
 - ⊞⊞ - SHORT STANDARD IRON BAR
 - ⊞⊞⊞ - IRON BAR
 - (P) - 44-8902
 - (P1) - 58-1114
 - (P2) - HIGHWAY PLAN P-2148-6
 - (DE) - INSTRUMENT 0815752
 - (S) - SET
 - (M) - MEASURED
 - (F57) - FAIRHALL, MOFFATT & WOODLAND LIMITED, O.L.S.
 - (ROGAS) - CHARLES S. ROGERS, O.L.S.
 - (OML) - MAZEH HELWAN LIMITED, O.L.S.
 - (PH) - PROPERTY OWNER NUMBER
 - (B) - WELL
 - (FP) - FENCE POST
 - (UP) - UTILITY POLE

SURVEYOR'S CERTIFICATE

I CERTIFY THAT:
1. THE SURVEY AND PLAN ARE CORRECT AND IN ACCORDANCE WITH THE SURVEY ACT, THE SURVEYORS ACT, THE LAND TILES ACT AND THE REGULATIONS MADE UNDER THEM.
2. THE SURVEY WAS COMPLETED ON -----

DATE -----
JOHN H. GUTRIE
ONWARD LAND SURVEYOR

THIS PLAN OF SURVEY RELATES TO A.S.L.S. PLAN SUBMISSION FORM NUMBER -----

<p>Fairhall Moffatt & Woodland ONWARD LAND SURVEYORS Professional and Land Information Services 1310 LESLIE STREET, SUITE 101, OTTAWA, ONTARIO K1Z 1S2 TEL: (613) 964-8100 FAX: (613) 964-8101</p>	<p>DATE: 2023-04-27</p>
	<p>JOB NO: 2310-000</p>
	<p>DRAWN BY: E. STREIBER, M. SCHUBERT CHECKED BY: S. OSOODE DATE: 2023-04-27</p>

NOTES
DISTANCES AND COORDINATES SHOWN ON THIS PLAN ARE IN METRES AND CAN BE CONVERTED TO FEET BY DIVIDING BY 0.3048

